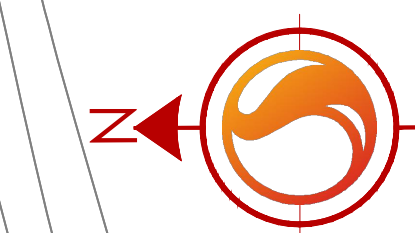
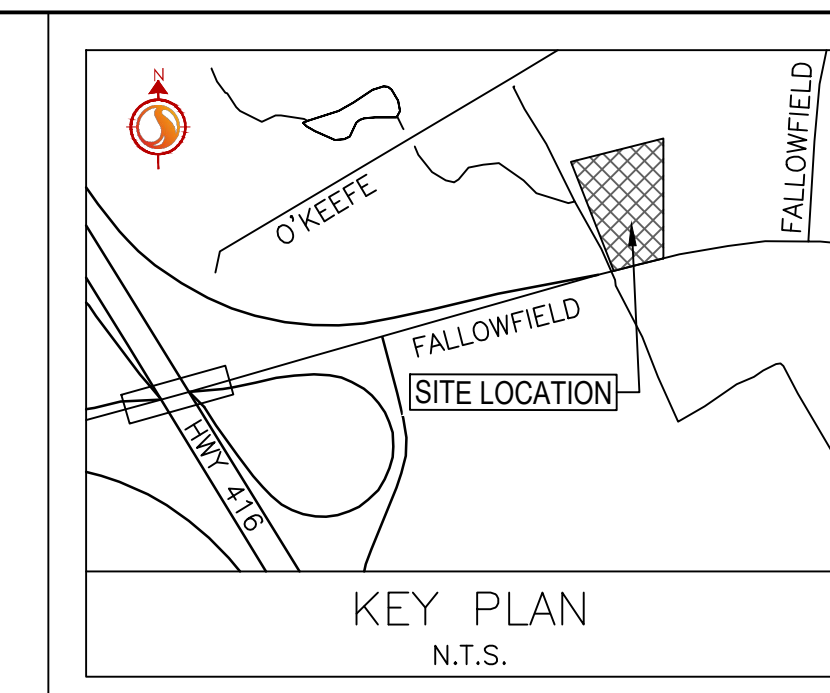


Copyright Reserved

The Contractor shall verify and be responsible for all dimensions. DO NOT scale the drawing - any errors or omissions shall be reported to Stantec without delay.
The Copyrights to all designs and drawings are the property of Stantec. Reproduction or use for any purpose other than that authorized by Stantec is forbidden.



Legend

- ORIGINAL GROUND ELEVATION
- PROPOSED ELEVATION
- EXISTING ELEVATION AT LOT CORNER
- FLOW DIRECTION AND GRADE
- FINISHED FIRST FLOOR ELEVATION
- UNDERSIDE OF FOOTING ELEVATION
- ENGINEERED FILL REQUIRED
- TERRACING 3:1 SLOPE MAXIMUM (UNLESS OTHERWISE SHOWN)
- DIRECTION OF PROPOSED OVERLAND FLOW
- PROPOSED VALVE BOX
- PROPOSED VALVE CHAMBER
- PROPOSED FIRE HYDRANT
- PROPOSED SANITARY SEWER MANHOLE
- PROPOSED STORM SEWER MANHOLE
- PROPOSED CATCHBASIN
- PROPOSED DEPRESSED CURB LOCATION AS PER SCI.1
- PROPOSED BARRIER CURB
- PROPOSED COMMUNITY MAILBOX LOCATIONS
- HEAVY DUTY ASPHALT
- OVERLAND SPILL LOCATION
- TWSI LOCATION AS PER CITY STD
- CIRCULAR ORIFICE (SEE ICD TABLE ON SSP-1 AND SD-1)

Notes

PAVEMENT STRUCTURE

ACCESS ROADS IN FILL AREAS
40mm WEAR COURSE- HL 3
50mm BASE COURSE- HL 4
150mm OPSS GRANULAR 'A' BASE
450mm OPSS GRANULAR 'B' TYPE II

ACCESS ROADS IN NATIVE AREAS
40mm WEAR COURSE- HL 3
50mm BASE COURSE- HL 4
150mm OPSS GRANULAR 'A' BASE
300mm OPSS GRANULAR 'B' TYPE II

CAR PARKING AREAS IN FILL AREAS
50mm WEAR COURSE- HL 3
150mm OPSS GRANULAR 'A' BASE
450mm OPSS GRANULAR 'B' TYPE II

CAR PARKING AREAS IN NATIVE AREAS
50mm WEAR COURSE- HL 3
150mm OPSS GRANULAR 'A' BASE
300mm OPSS GRANULAR 'B' TYPE II

Revision	By	Appd.	YY.MM.DD
1	WAJ	KJK	22.06.03
0	MJS	TR	21.04.08

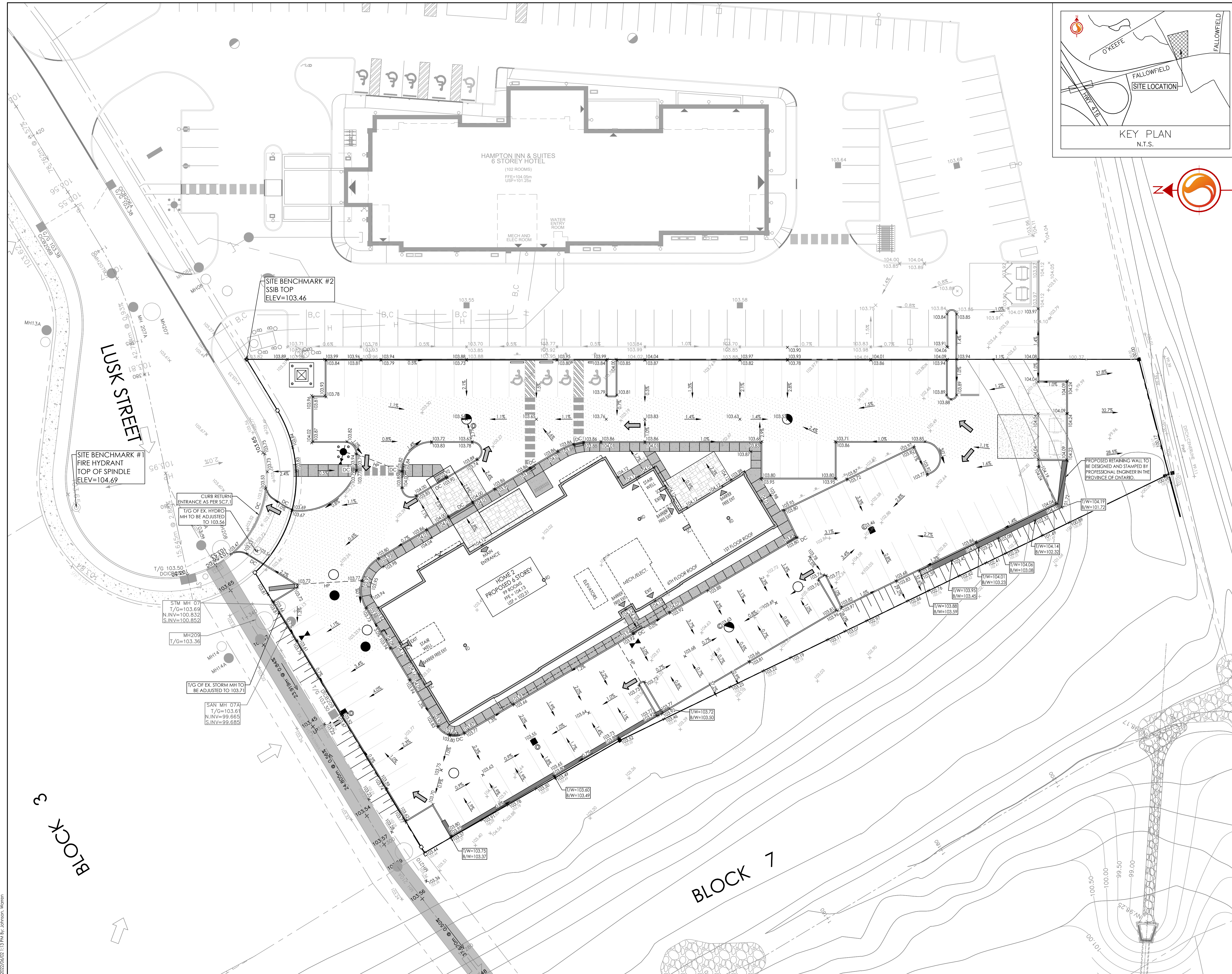
File Name:	MJS	KK	MJS	21.01.15
160401620 DB.dwg	Dwn.	Chkd.	Dgn.	YY.MM.DD

Permit-Seal

Client/Project
2441736 ONTARIO INC.
125 LUSK STREET, OTTAWA, ON, K2J 6S5
PHONE: 613-307-0412
BLOCK 10
HOME 2 - PROPOSED 6 STOREY
OTTAWA, ON, CANADA

Title
GRADING PLAN

Project No.	Scale	Sheet	Revision
160401620	1:250	4 of 7	1



V:\Projects\2441736\160401620\design\dwg\160401620 DB.dwg
 2022/06/03 13:39:01 - STANTEC - WJW