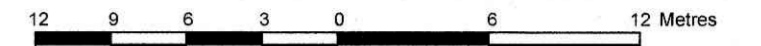


**PART OF LOT F  
CONCESSION D (RIDEAU FRONT)  
GEOGRAPHIC TOWNSHIP OF NEPEAN  
CITY OF OTTAWA**

Prepared by Annis, O'Sullivan, Vollebek Ltd.

Plan amended Dec. 4, 2020 to illustrate tree locations.

Scale 1 : 300



Metric  
DISTANCES SHOWN ON THIS PLAN ARE IN METRES AND  
CAN BE CONVERTED TO FEET BY DIVIDING BY 0.3048

**Surveyor's Certificate**

I CERTIFY THAT:  
1. This survey and plan are correct and in accordance with the Surveys Act and the Surveyors Act and the regulations made under them.  
2. The survey was completed on the 18th day of July, 2020.

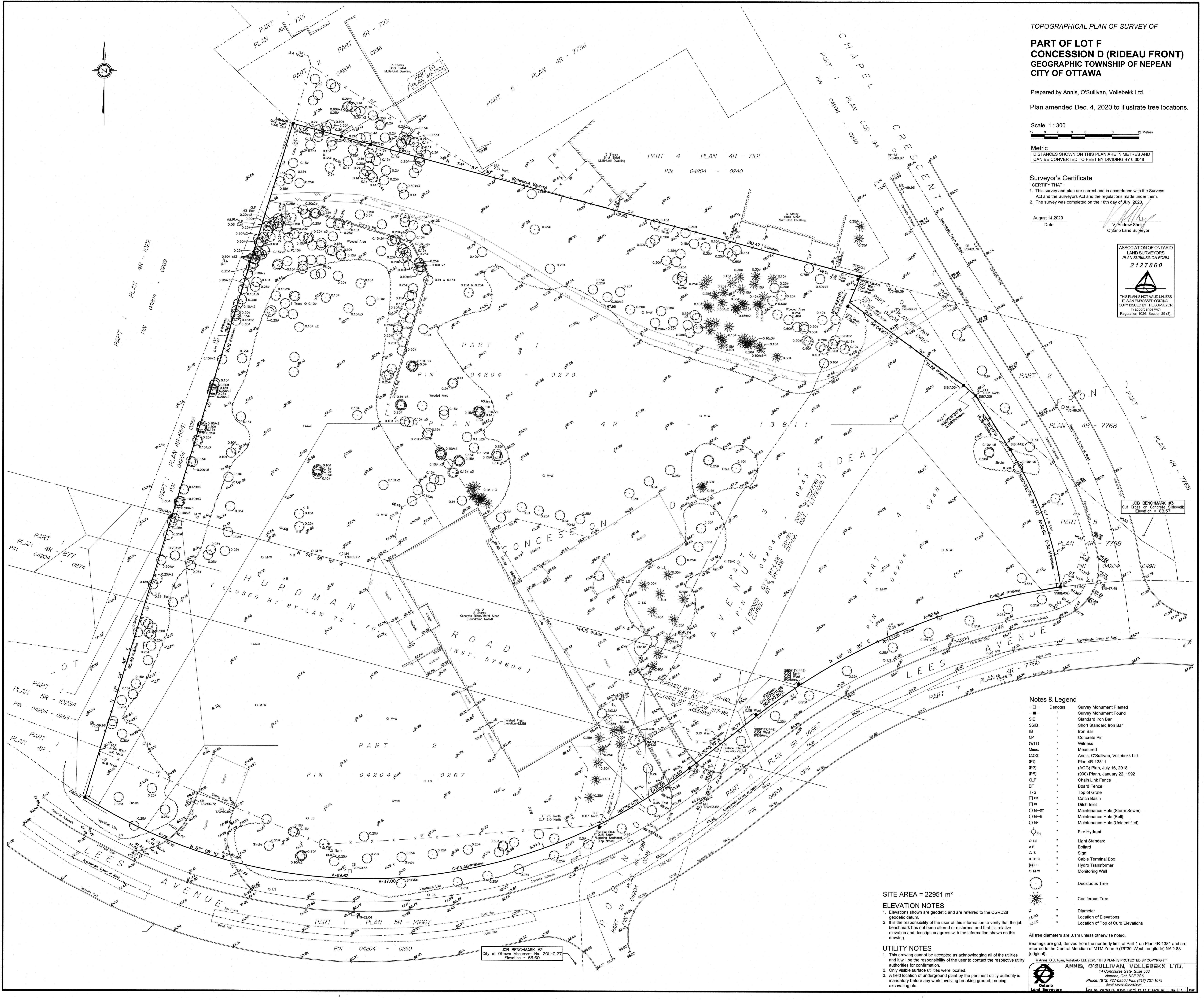
August 14, 2020  
Date

V. Andrew Shively  
Ontario Land Surveyor

ASSOCIATION OF ONTARIO  
LAND SURVEYORS  
PLAN SUBMISSION FORM  
2127860

THIS PLAN IS NOT VALID UNLESS  
IT IS AN EMBOSSED ORIGINAL  
COPY ISSUED BY THE SURVEYOR  
IN ACCORDANCE WITH  
REGULATION 1026, SECTION 29 (3)

JOB BENCHMARK #3  
Cut Cross on Concrete Sidewalk  
Elevation = 68.57



**Notes & Legend**

- Denotes Survey Monument Planted
- " " Survey Monument Found
- SIB " " Short Standard Iron Bar
- SSB " " Short Standard from Iron Bar
- IB " " Iron Bar
- CP " " Concrete Pin
- (WIT) " " Witness
- Meos. " " Measured
- (AOG) " " Annis, O'Sullivan, Vollebek Ltd.
- (PI) " " Plan 4R-13811
- (P1) " " (AOG) Plan, July 16, 2016
- (P3) " " (990) Plan, January 22, 1992
- CLF " " Chain Link Fence
- BF " " Board Fence
- T/G " " Top of Grate
- CB " " Catch Basin
- DI " " Ditch Inlet
- M+ST " " Maintenance Hole (Storm Sewer)
- M+H " " Maintenance Hole (Bell)
- M+ " " Maintenance Hole (Unidentified)
- FH " " Fire Hydrant
- LS " " Light Standard
- B " " Bollard
- △ S " " Sign
- TB-C " " Cable Terminal Box
- H-T " " Hydro Transformer
- M+W " " Monitoring Well
- " " Deciduous Tree
- ★ " " Coniferous Tree
- φ " " Diameter
- 68.00 " " Location of Elevations
- 68.00 " " Location of Top of Curb Elevations

SITE AREA = 22951 m<sup>2</sup>

**ELEVATION NOTES**

1. Elevations shown are geodetic and are referred to the CGVD28 geodetic datum.
2. It is the responsibility of the user of this information to verify that the job benchmark has not been altered or disturbed and that its relative elevation and description agrees with the information shown on this drawing.

**UTILITY NOTES**

1. This drawing cannot be accepted as acknowledging all of the utilities and it will be the responsibility of the user to contact the respective utility authorities for confirmation.
2. Only visible surface utilities were located.
3. A field location of underground plant by the pertinent utility authority is mandatory before any work involving breaking ground, probing, excavating etc.

All tree diameters are 0.1m unless otherwise noted.  
Bearings are grid, derived from the northerly limit of Part 1 on Plan 4R-1381 and are referred to the Central Meridian of MTM Zone 9 (76°32' West Longitude) NAD-83 (original).

© Annis, O'Sullivan, Vollebek Ltd. 2020. THIS PLAN IS PROTECTED BY COPYRIGHT!  
ANNIS, O'SULLIVAN, VOLLEBEK LTD.  
14 Concourse Gate, Suite 500  
Nepean, Ont. K2E 7S6  
Phone: (613) 727-0850 / Fax: (613) 727-1079  
Email: info@anniso.com

Ontario Land Surveyors