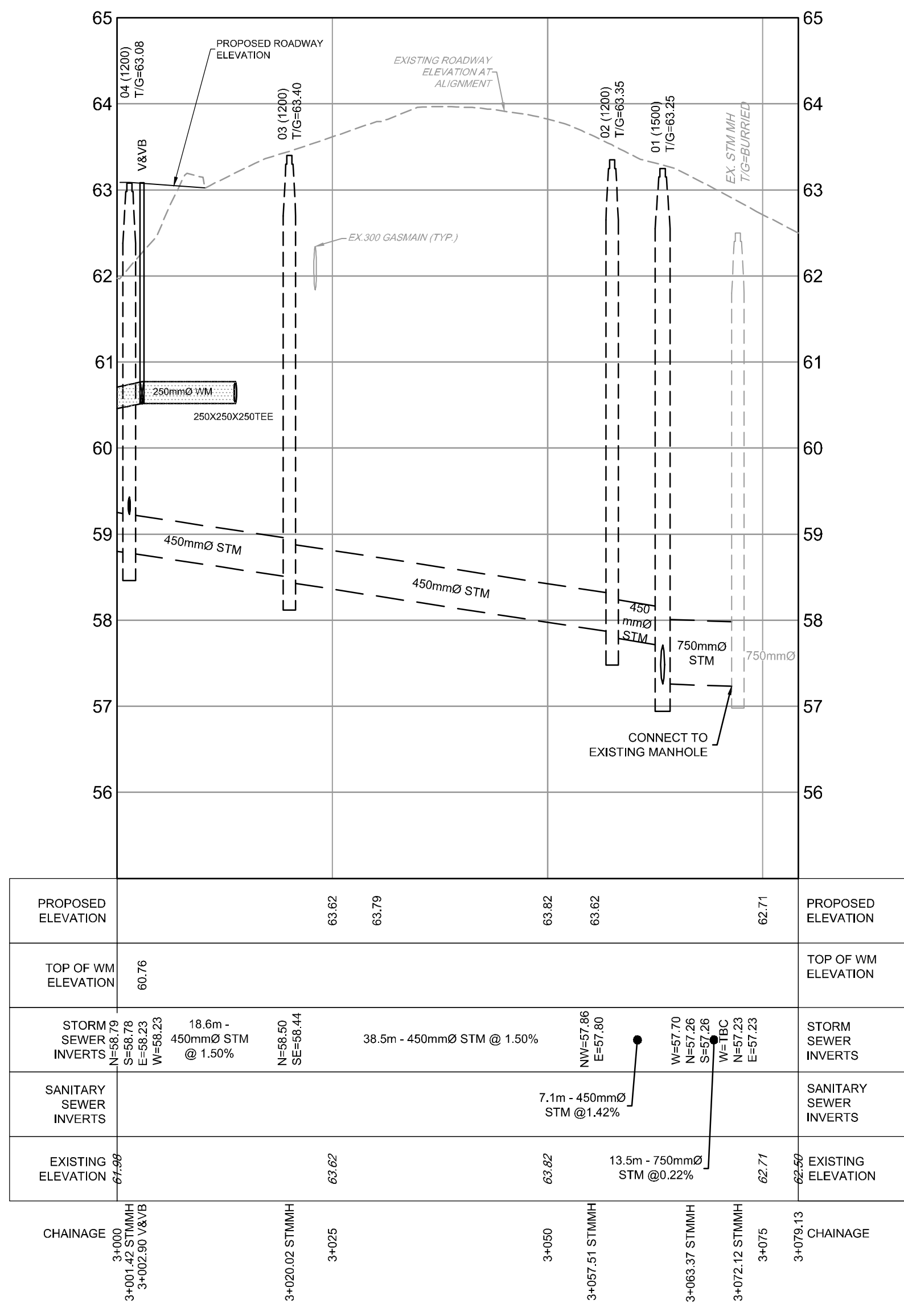


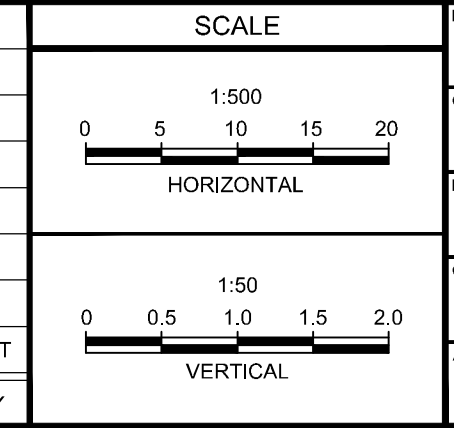
ROBINSON AVENUE



REFER TO 119171-NDT FOR ADDITIONAL NOTES

NOTE:
THE POSITION OF ALL POLE LINES, CONDUITS, WATERMANS, SEWERS AND OTHER UNDERGROUND AND OVERGROUND UTILITIES AND STRUCTURES IS NOT NECESSARILY SHOWN ON THE CONTRACT DRAWINGS, AND WHERE SHOWN, THE ACCURACY OF THE POSITION OF SUCH UTILITIES AND STRUCTURES IS NOT GUARANTEED. BEFORE STARTING WORK, DETERMINE THE EXACT LOCATION OF ALL SUCH UTILITIES AND STRUCTURES AND ASSUME ALL LIABILITY FOR DAMAGE TO THEM.

| No. | REVISION | DATE | BY |
|-----|-------------------------------|-----------|-----|
| 1 | ISSUED FOR SITE PLAN APPROVAL | NOV 15/21 | FST |



| | |
|----------|-----|
| DESIGN | DWM |
| CHECKED | FST |
| DRAWN | DWM |
| CHECKED | FST |
| APPROVED | FST |

FOR REVIEW ONLY

NOVATECH
Engineers, Planners & Landscape Architects
Suite 200, 240 Michael Cowpland Drive
Ottawa, Ontario, Canada K2M 1P6
Telephone: (613) 254-9643
Facsimile: (613) 254-5867
Website: www.novatech-eng.com

LOCATION
OTTAWA, ONTARIO
2 ROBINSON AVE.

DRAWING NAME
PLAN AND PROFILE
ROBINSON AVENUE
STATION 3+000 TO 3+075

| | |
|-------------|------------|
| PROJECT No. | 119171 |
| REV | REV # 1 |
| DRAWING No. | 119171-PR2 |

C:\Users\119171\OneDrive\119171-PR2.dwg, Nov 15, 2021, 10:58am, emmshaws