

SANDY HILL ARENA

3 Storey Brick Sided Multi-Unit Dwelling

3 Storey Brick Sided Multi-Unit Dwelling

3 Storey Brick Sided Multi-Unit Dwelling

3 Storey Brick Sided Multi-Unit Dwelling

OUTLINE OF BELOW GRADE PARKING GARAGE. REFER TO ARCH.

NEW PATHWAY, LIGHT DUTY ASPHALT PAVING

BERM TREE PLANTING OVER UNDERGROUND ROOF DECK, TYP.

450mm WIDE, RIVERSTONE APRON

SHRUB / PERENNIAL PLANTING BED, TYP.

AT-GRADE TREE PLANTING IN CONTINUOUS PIT

BOTTOMLESS RAISED METAL PLANTER, WITH SMALL TREE PLANTING, TYP.

RETAINING WALL, SEE CIVIL

RELOCATE EXISTING STREET LIGHT POLES. SEE ELECTRICAL.

BENCH, TYP.

LIGHT-DUTY CONCRETE PAVING

HEAVY-DUTY CONCRETE PAVING AT CROSSWALK

RELOCATE EXISTING STREET LIGHT POLES. SEE ELECTRICAL.

BIKE RACKS, TYP.

SHRUB / PERENNIAL PLANTING BED, TYP.

LIGHT-DUTY CONCRETE PAVING, TYP.

EXISTING TREES TO REMAIN, TYP. SEE TREE CONSERVATION REPORT.

OUTLINE OF BELOW GRADE PARKING GARAGE. REFER TO ARCH.

PROPOSED STREET TREES IN OPEN PLANTING BED, TYP.

PRELIMINARY
NOT FOR CONSTRUCTION

#18357

NOTES:

- DO NOT SCALE DRAWINGS;
- NOTES ARE APPLICABLE TO ALL DRAWINGS IN THE SET;
- Fotenn Consultants Inc. IS NOT RESPONSIBLE FOR ACCURACY OF BASE INFORMATION;
- REFER TO CIVIL ENGINEERING DRAWINGS FOR GRADING & SITE SERVICING INFORMATION;
- THE CONTRACTOR IS RESPONSIBLE FOR CONFIRMING SITE CONDITIONS AND REPORTING ANY DISCREPANCIES TO THE LANDSCAPE ARCHITECT;
- THE CONTRACTOR IS RESPONSIBLE FOR CONFIRMING EXACT LOCATIONS OF ALL UNDERGROUND SERVICES AND OBTAINING CLEARANCE FROM ALL APPLICABLE UTILITIES. PROPOSED WORKS FOUND TO BE IN CONFLICT WITH UNDERGROUND SERVICES MAY BE ADJUSTED AT THE DIRECTION OF THE LANDSCAPE ARCHITECT;
- LANDSCAPE ELEMENTS SHOWN ARE SUBJECT TO THE FINAL LOCATION OF UNDERGROUND SERVICES AND UTILITIES;
- DO NOT INSTALL TREES ON PROPERTY / LOT LINES OR WITHIN DRAINAGE EASEMENTS;
- PERFORM WORK IN ACCORDANCE WITH DETAILS AND SPECIFICATIONS;
- ALL PLANT MATERIAL SHALL BE NO. 1 NURSERY STOCK AND SHALL MEET OR EXCEED THE SPECIFICATION OF THE Canadian Standards for Nursery Stock, AS PUBLISHED BY THE Canadian Nursery Landscape Association;
- SPECIES SUBSTITUTIONS ARE NOT PERMITTED WITHOUT PRIOR WRITTEN APPROVAL OF THE LANDSCAPE ARCHITECT;
- ALL UN-PAVED SURFACES TO RECEIVE 150mm DEPTH TOPSOIL & SOD.

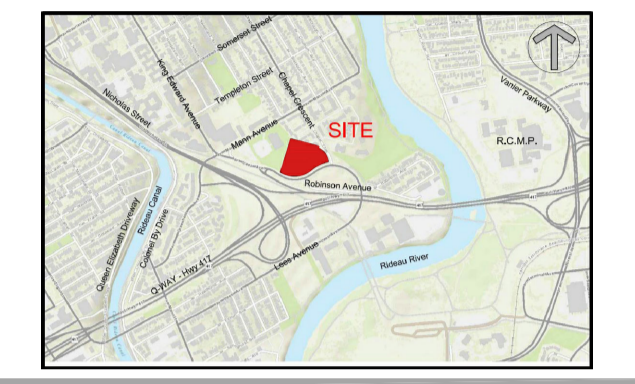
Copyright Reserved
The Copyrights to all designs and drawings are the property of Fotenn Consultants Inc. Unauthorised reproduction or use is forbidden. DO NOT SCALE DRAWING

Client / Client

2 Robinson Property Limited Partnership

D07-12-21-0202
#18357

key plan / plan repère



Legend / légende

	BOUNDARY OF APPLICATION
	PARKLAND DEDICATION
	CONCRETE PAVING
	LAWN
	GROUND COVER
	BOTTOMLESS RAISED METAL PLANTER
	SHRUB / PERENNIAL PLANTING BED
	EXISTING VEGETATION TO REMAIN
	EXISTING STREET TREES TO REMAIN
	PROPOSED DECIDUOUS TREE PLANTING (LARGE, MEDIUM & SMALL)
	PROPOSED CONIFEROUS TREE PLANTING
	BERM TO ALLOW FOR TREE PLANTING ON TOP OF P1 SLAB

05	re-issued for SPA	2022/03/30
04	issued for SPA	2021/11/19
03	issued for coordination	2021/11/10
02	issued for client review	2021/10/29
01	issued for coordination	2021/01/26
00	issued for ZBLA	2020/12/22
rev/n	description / la description	yyyy/mm/dd

FOTENN Planning + Design
396 Cooper Street, Suite 300
Ottawa, ON, CANADA K2P 2H7
613.730.5709
fotenn.com

north / le nord stamp / le cachet

2 ROBINSON PROPERTY LIMITED PARTNERSHIP

drawing / dessin

LANDSCAPE PLAN

designed / conçu KA / ST	drawn / dessiné ST	reviewed / examiné KA
date DEC 2020	project number / No. du projet X ##-##	
drawing number / No. du dessin		

PLANTING SCHEDULE

KEY	QTY.	BOTANICAL NAME	COMMON NAME	SIZE / CONDITION / SPACING
DECIDUOUS TREES				
AC	10	Amelanchier canadensis	Serviceberry	60mm cal. / W.B.
AR	2	Acer rubrum	Red Maple	70mm cal. / W.B.
AS	5	Acer saccharum	Sugar Maple	70mm cal. / W.B.
CO	2	Celtis occidentalis	Common Hackberry	70mm cal. / W.B.
CR	3	Cornus racemosa	Gray Dogwood	50mm cal. / W.B.
GB	5	Ginkgo biloba	Maidenhair Tree	70mm cal. / W.B.
GBF	4	Ginkgo biloba 'fastigiata'	Columnar Maidenhair Tree	60mm cal. / W.B.
OV	6	Ostrya virginiana	Ironwood	60mm cal. / W.B.
PPR	3	Parrotia persica	Parrotia Ironwood	60mm cal. / W.B.
QM	3	Quercus macrocarpa	Bur Oak	70mm cal. / W.B.
QR	2	Quercus rubra	Red Oak	70mm cal. / W.B.
SR	6	Syringa reticulata 'ivory silk'	Ivory Silk Tree Lilac	60mm cal. / W.B.
TOTAL	51			
CONIFEROUS TREES				
ACO	1	Abies concolor	White Fir	175cm ht. / W.B.
COB	8	Chamaecyparis obtusa 'compacta'	Hinoki Falsecypress	150cm ht. / W.B.
JV	3	Juniperus virginiana 'taylor'	Taylor Eastern Red Cedar	175cm ht. / W.B.
PAP	3	Picea abies 'pyramidata'	Pyramidal Norway Spruce	175cm ht. / W.B.
PP	3	Picea pungens	Colorado Spruce	175cm ht. / W.B.
TC	1	Tsuga canadensis	Eastern hemlock	175cm ht. / W.B.
TOTAL	19			
DECIDUOUS SHRUBS				
Cs	67	Cornus sericea 'Arctic Fire'	Arctic Fire Dogwood	#3 pot/ 90cm sp.
Hp	5	Hydrangea paniculata 'grandiflora'	Panicle Hydrangea	Treeform 40mm WB
Po	46	Physocarpus opulifolius 'Monto'	Diabolo Ninebark	#3 pot / 90cm sp.
Ra	40	Ribes alpinum	Alpine Currant	#3 Pot / 100cm sp.
Rag	113	Rhus aromatica 'Gro-Low'	Gro-Low Fragrant Sumac	#3 Pot / 120cm sp.
Sa	89	Symphoricarpos albus	Snowberry	#3 Pot / 90cm sp.
VI	5	Viburnum lentago	Nannyberry	# 3 pot / 80 cm sp.
EVERGREEN SHRUBS				
Ef	44	Euonymus Fortunei 'Emerald Gaiety'	Emerald Gaiety Euonymus	30cm ht. 2gal. / 75cm o.c.
Js	20	Juniperus sabina var. tamariscifolia	Tamarix Juniper	40cm ht. 3g / 150cm o.c.
FERNS				
Df	100	Dryopteris filix-mas	Male Fern	#1 Pot / 75cm o.c.
PERENNIALS & GRASSES				
ac	147	Astilbe chinensis 'vision in white'	False Spirea 'Vision in White'	#1 Pot / 40cm o.c.
am	113	Achillea millefolium 'Sonoma Coast'	'Sonoma Coast' White Yarrow	#1 Pot / 40cm o.c.
at	170	Asclepias tuberosa	Butterfly milkweed	#1 Pot / 35cm o.c.
ca	131	Calamagrostis acutiflora 'Karl Foerster'	Feather Reed Grass	#1 Pot / 50cm o.c.
cm	60	Carex muskingumensis 'nehme'	Variagated Palm Sedge	#1 Pot / 35cm o.c.
ha	33	Hosta 'august moon'	Plantain Lily	#1 Pot / 75cm o.c.
he	114	Hemerocallis 'vanilla fluff'	'Vanilla Fluff' Daylily	#1 Pot / 45cm o.c.
ss	112	Schizanthium scaparium	Little Bluestem	#1 Pot / 50cm sp.
tc	1150	Tiarella cordifolia	Foam Flower	#1 Pot / 35cm o.c.

STANDARDS FOR TREE PLANTING:

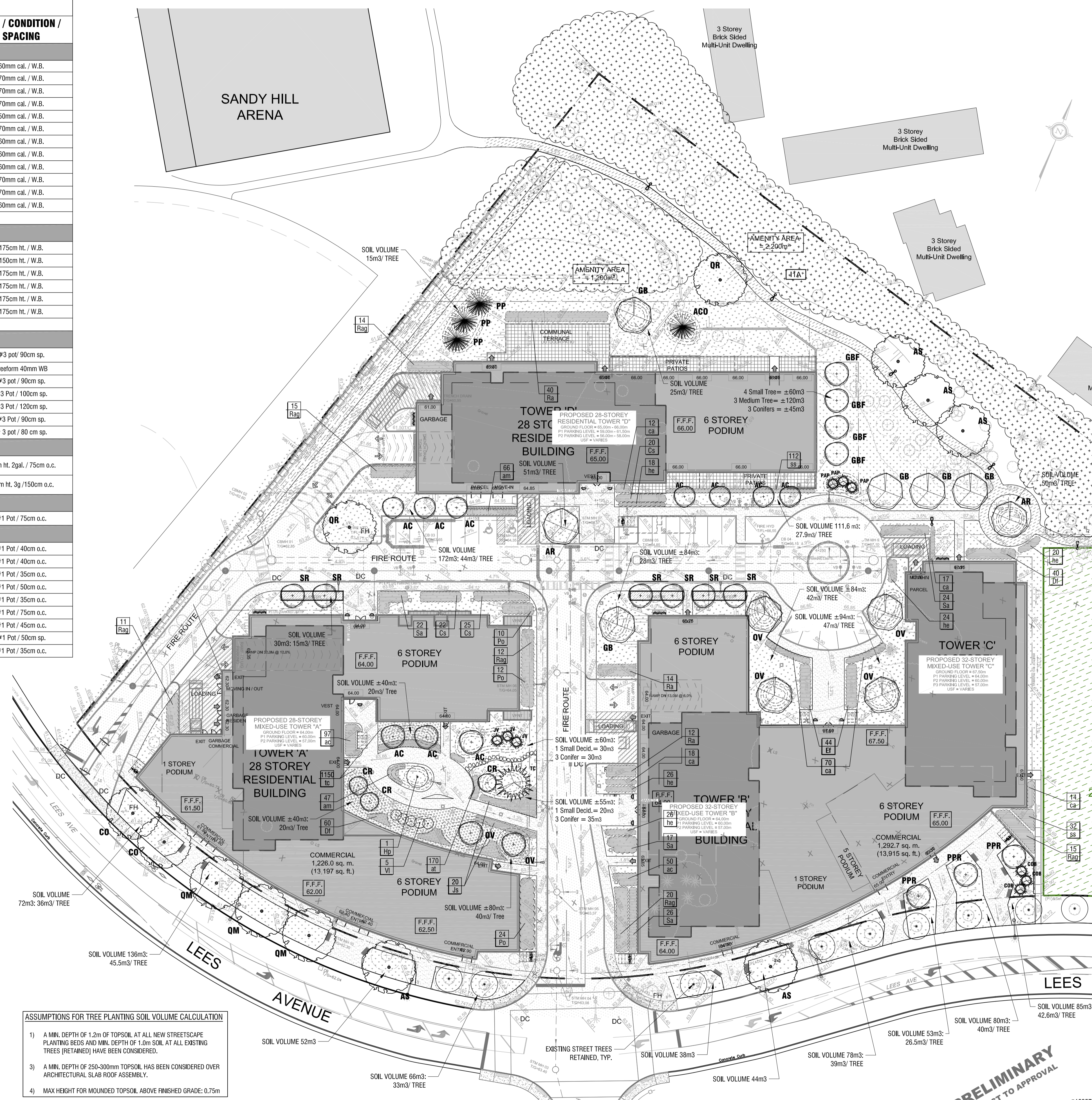
- NO PLANTING ON CORNERS OR ANYWHERE WHERE IT WOULD CREATE A SIGHT LINE CONCERN;
- MAINTAIN A MINIMUM DISTANCE OF 7.5m FROM ALL BUILDINGS;
- MAINTAIN A MINIMUM DISTANCE OF 2.5m FROM THE CURB FOR DECIDUOUS TREES AND 4.5m FOR CONIFEROUS TREES;
- MAINTAIN A MINIMUM DISTANCE OF 1.5m FOR DECIDUOUS (4.5m FOR CONIFERS) FROM ANY SIDEWALK OR PRIVATE WALKWAY;
- MAINTAIN A MINIMUM DISTANCE OF 1.2m FROM ALL DRIVEWAYS;
- MAINTAIN A MINIMUM DISTANCE OF 2.5m FROM COMMUNITY MAILBOXES, LIGHT STANDARDS, FIRE HYDRANTS AND NO PLANTING IN FRONT OF HYDRANTS;
- MAINTAIN A MINIMUM DISTANCE OF 3.0m FROM ALL HYDRO TRANSFORMERS;
- MAINTAIN A MINIMUM DISTANCE OF 1.0m FROM ALL UNDERGROUND SERVICES;
- MAINTAIN A MINIMUM DISTANCE OF 1.0m FROM ALL BELL AND CABLE BOXES;
- MAINTAIN A MINIMUM DISTANCE OF 10.0 FROM BUS SHELTERS

IMPORTANT NOTICE FOR CONTRACTOR:

- THE CITY OF OTTAWA REQUIRES A Certificate of Completion (F1) Landscape Works TO BE SUBMITTED AND SEALED BY THE LANDSCAPE ARCHITECT. CONTRACTORS ARE RESPONSIBLE FOR FAMILIARIZING THEMSELVES WITH THE REQUIREMENTS OF THIS PROCESS AND PROVIDING SUFFICIENT NOTICE TO THE LANDSCAPE ARCHITECT TO CONDUCT SITE REVIEWS DURING INSTALLATION OF TREES. THE 1 YEAR WARRANTY PERIOD SHALL NOT COMMENCE UNTIL THE LANDSCAPE ARCHITECT HAS SUBMITTED THE F1 Certificate.
- PRIOR TO INSTALLATION OF TREES, THE DEVELOPER WILL CONTACT THE PLANNING AND GROWTH MANAGEMENT AND FORESTRY SERVICES TO REVIEW THE SPECIES AND LOCATION OF TREES.

ASSUMPTIONS FOR TREE PLANTING SOIL VOLUME CALCULATION

- A MIN. DEPTH OF 1.2m OF TOPSOIL AT ALL NEW STREETSCAPE PLANTING BEDS AND MIN. DEPTH OF 1.0m SOIL AT ALL EXISTING TREES (RETAINED) HAVE BEEN CONSIDERED.
- A MIN. DEPTH OF 250-300mm TOPSOIL HAS BEEN CONSIDERED OVER ARCHITECTURAL SLAB ROOF ASSEMBLY.
- MAX HEIGHT FOR MOUNDED TOPSOIL ABOVE FINISHED GRADE: 0.75m



PRELIMINARY
SUBJECT TO APPROVAL

Copyright Reserved
The Copyrights to all designs and drawings are the property of Fotenn Consultants Inc. Unauthorised reproduction or use is forbidden. DO NOT SCALE DRAWING

Copyright réservés
Les droits d'auteur à tous les modèles et dessins sont la propriété de Fotenn Consultants Inc. Reproduction ou utilisation non autorisée est interdite. NE PAS L'ÉCHELLE DE DESSIN

Client / Client

2 Robinson Property Limited Partnership

D07-12-21-0202
#18357

key plan / plan repère



Legend / légende

- BOUNDARY OF APPLICATION
- PARKLAND DEDICATION
- CONCRETE PAVING
- LAWN
- GROUND COVER
- BOTTOMLESS RAISED METAL PLANTER
- SHRUB / PERENNIAL PLANTING BED
- EXISTING VEGETATION TO REMAIN
- EXISTING STREET TREES TO REMAIN
- PROPOSED DECIDUOUS TREE PLANTING (LARGE, MEDIUM & SMALL)
- PROPOSED CONIFEROUS TREE PLANTING
- BERM TO ALLOW FOR TREE PLANTING ON TOP OF P1 SLAB

rev'n	description / la description	yyyy/mm/dd
05	re-issued for SPA	2022/03/30
04	issued for SPA	2021/11/19
03	issued for coordination	2021/11/10
02	issued for client review	2021/10/29
01	issued for coordination	2021/01/26
00	issued for ZBLA	2020/12/22

FOTENN Planning + Design
396 Cooper Street, Suite 300
Ottawa, ON, CANADA K2P 2H7
613.730.5709
fotenn.com

north / le nord stamp / le cachet
ASSOCIATION OF LANDSCAPE ARCHITECTS
KANYAR ABBAS ARCHITECTS
MEMBER
OALA

2 ROBINSON PROPERTY LIMITED PARTNERSHIP

PLANTING PLAN

designed / conçu	drawn / dessiné	reviewed / examiné
KA / ST	ST	KA
date	project number / No. du projet	
DEC 2020	X ###-###	
drawing number / No. du dessin		

L2 of 5

2 Robinson Property Limited Partnership

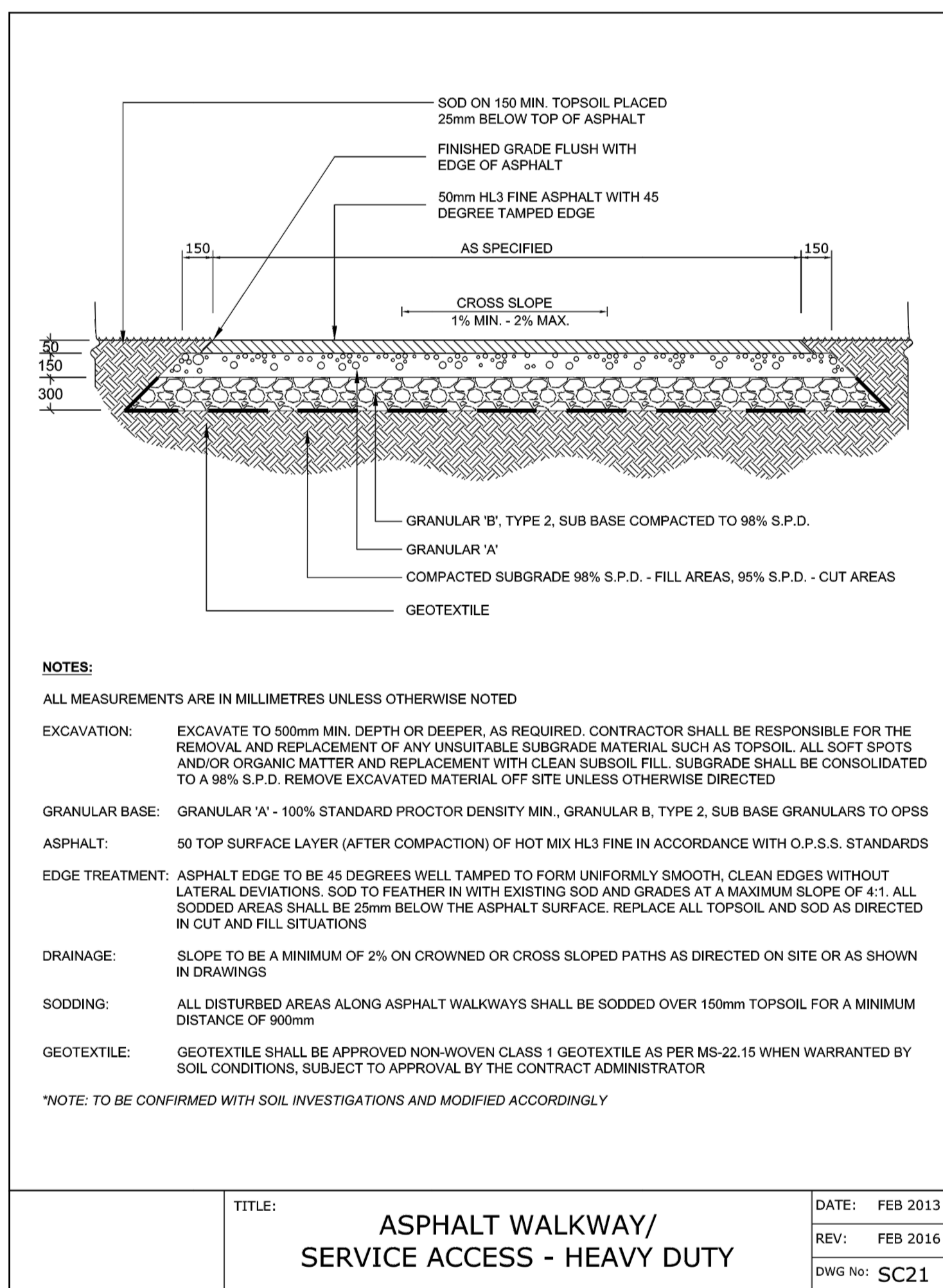
D07-12-21-0202
 #18357

key plan / plan repère

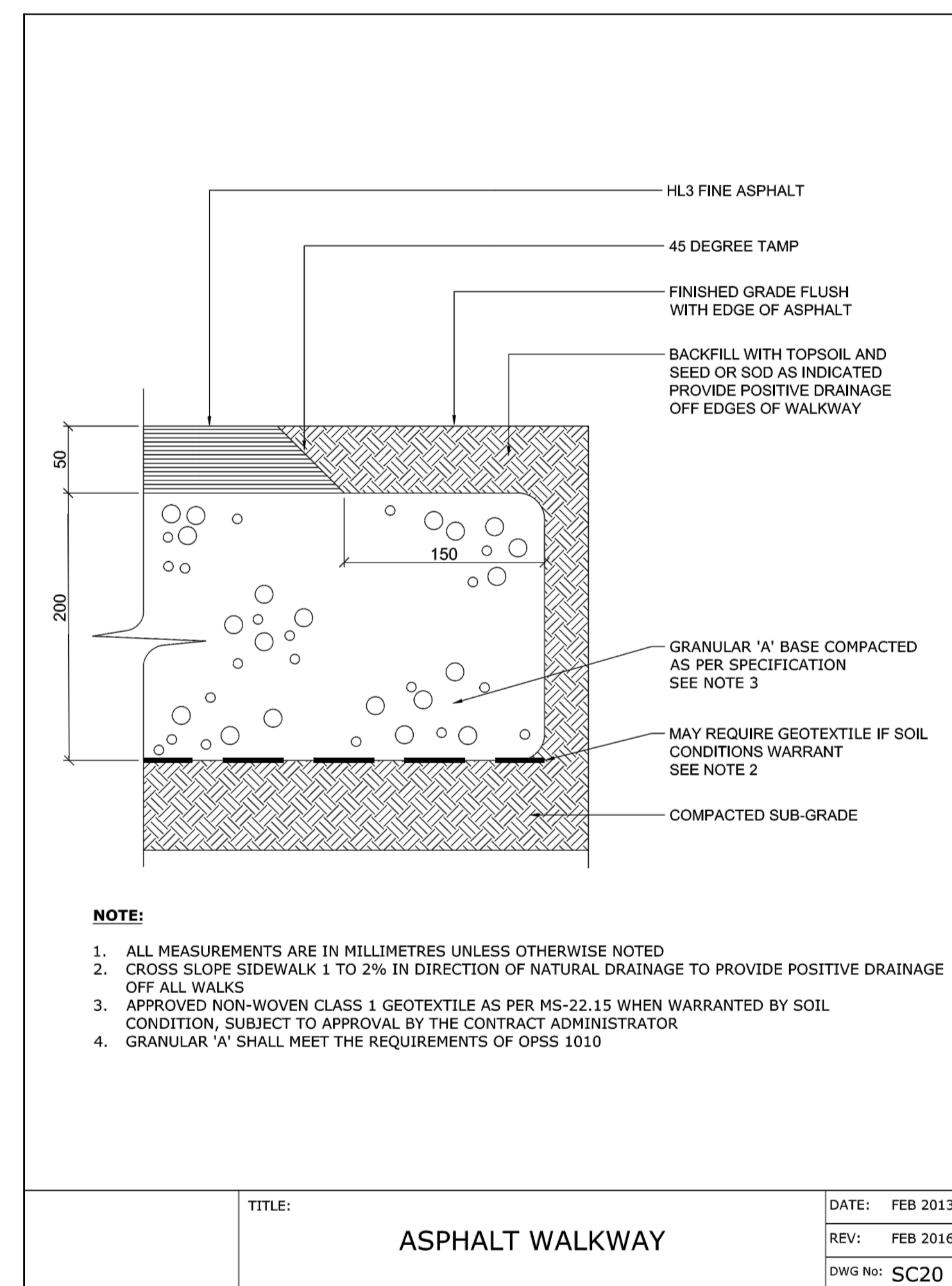


legend / légende

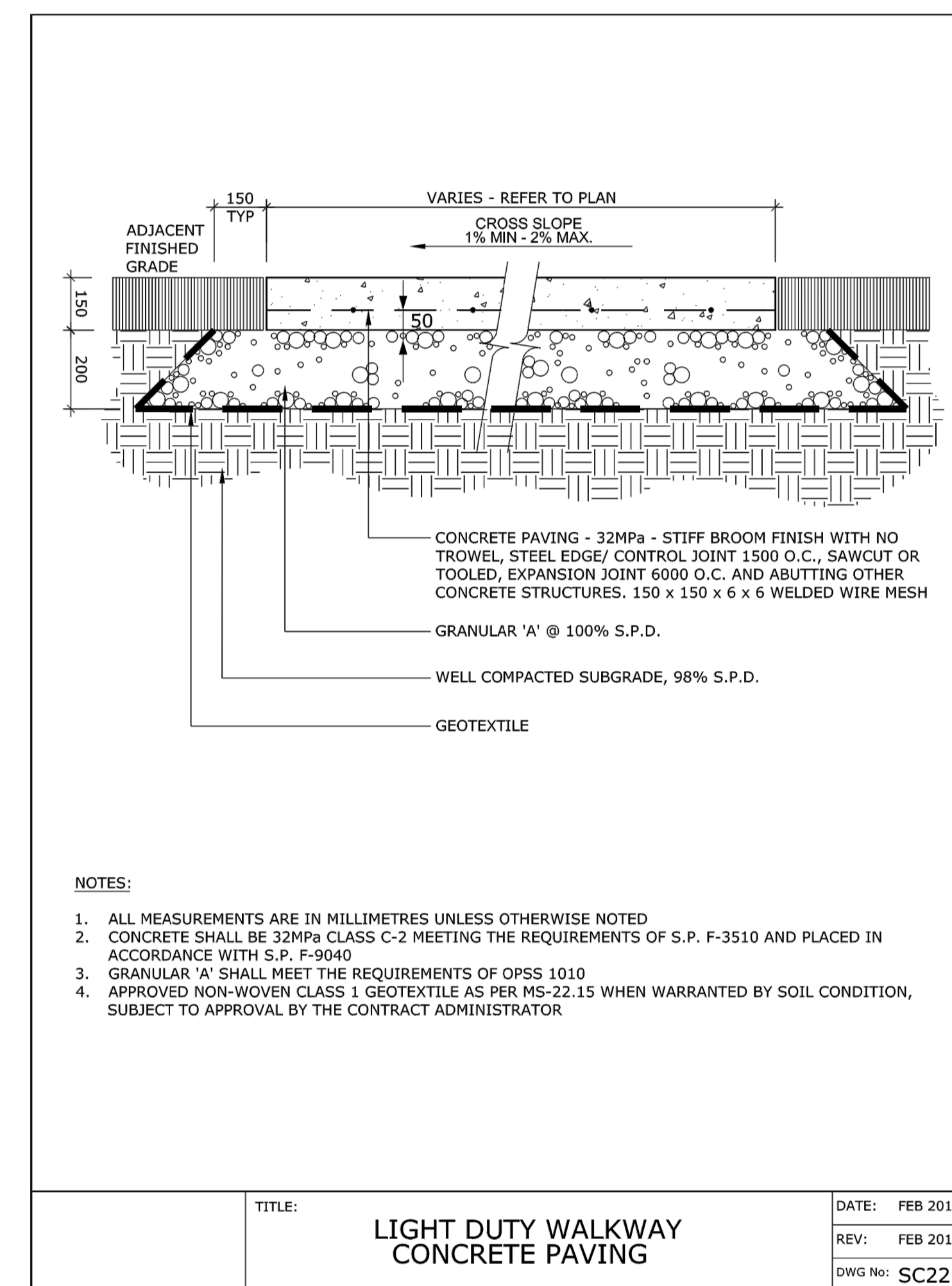
PRELIMINARY
 SUBJECT TO APPROVAL



1 HEAVY DUTY ASPHALT PAVING
L3 n.t.s.



2 ASPHALT PAVING
L3 n.t.s.



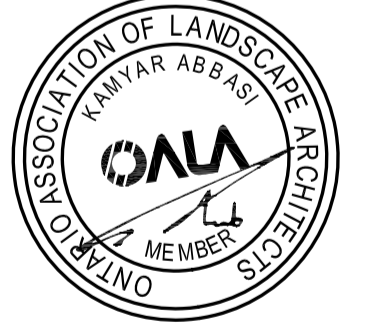
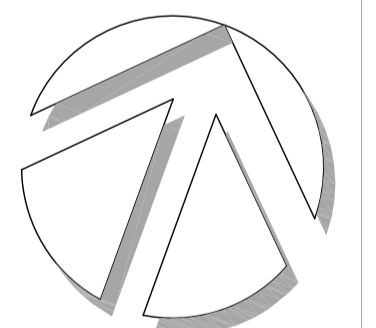
3 CONCRETE SLAB
L3 n.t.s.

rev'n	description / la description	yyyy/mm/dd
05	re-issued for SPA	2022/03/30
04	issued for SPA	2021/11/19
03	issued for coordination	2021/11/10
02	issued for client review	2021/10/29
01	issued for coordination	2021/01/26
00	issued for ZBLA	2020/12/22

FOTENN Planning + Design
 396 Cooper Street, Suite 300
 Ottawa, ON, CANADA K2P 2H7
 613.730.5709
 fotenn.com

north / le nord

stamp / le cachet



project / projet

2 ROBINSON PROPERTY LIMITED PARTNERSHIP

drawing / dessin

CONSTRUCTION DETAILS

designed / conçu	drawn / dessiné	reviewed / examiné
KA / ST	ST	KA
date	project number / No. du projet	
DEC 2020	X ###-###	
drawing number / No. du dessin		

L3 of 5



1 **BOTTOMLESS RAISED PLANTER IN CORTEN FINISH**
L4 **n.t.s.**



EQUIPARC
 1001 JAMES-BRODIE
 ST-JEAN-SUR-RICHELIEU, QC J2X 0C1
 TOLL FREE: 1-800-363-9264
 PHONE: (450) 346-1882
 FAX: (866) 346-2538
 www.equiparc.com

PLAN VIEW

FRONT ELEVATION
EP 1990-1991

SIDE ELEVATION

PLAN VIEW

FRONT ELEVATION
EP 1990-DOUBLE

SIDE ELEVATION

NOTES:
 1. INSTALLATION TO BE COMPLETED IN ACCORDANCE WITH MANUFACTURER'S SPECIFICATIONS.
 2. ALL DIMENSIONS ARE CONSIDERED TRUE AND REFLECT MANUFACTURER'S SPECIFICATIONS.
 3. DO NOT SCALE DRAWING.
 4. CONTRACTOR'S NOTE: FOR PRODUCT AND COMPANY INFORMATION VISIT www.CADdetails.com/info REFERENCE NUMBER 2896-001.

BENCHES
EP 1990: BENCH WITH BACKREST- COLLECTION ESPLANADE

2896-001 PROTECTED BY COPYRIGHT ©2019 CADDETAILS.COM LTD. REVISION DATE 19/02/2019 CADdetails.com

EP 3950-RU-DOUBLE **Recycling unit**

SPECIFICATIONS
 Frame: Steel sheets and flats
 Finish: Zinc rich primer and polyester powder coated
 Lid: Polyester powder coated aluminum lid
 Slate: 51mm X 152mm (2" X 6")
 Liners (2): Painted galvanized steel, 91 litres / 24 US gal
 Fasteners: Stainless steel

COVERINGS
 JAT Jatoba
 IPE Ipe
 HWA Select hardwood

INCLUDING
 Recycling section: Lid with a permanent opening and descriptive logo
 Waste section: Lid with a central leaf and descriptive logo

OPTIONS
 ASH Painted aluminum ashtray
 AT Painted 2 way aluminum top
 DS Reflective strip

Depth.: 558mm (22") Length.: 970mm (38 3/16") Height.: 930mm (36 5/8") Weight.: 191 kg (420 lb)

This waste receptacle must be anchored.
 Our warranty applies when our product is properly assembled and anchored.

CONCRETE SLABS AND ANCHORS
 7005 1 slab 610mm X 1219mm X 152mm (24" X 48" X 6")
 QS 8 stainless steel kwik bolts
 QAV 8 drop-in anchors with stainless steel theftproof bolts

2 **COMBINED WASTE AND RECYCLING BIN**
L4 **n.t.s.**

EP 5960 **Bike rack**

SPECIFICATIONS
 Frame: Steel tubular
 Finish: Hot-dipped galvanized

AVAILABLE
 5960 2 bikes per rack

OPTION
 GP Galvanized and painted frame

Depth : 254mm (10") Length : 406mm (16") Height : 1016mm (40") Weight : 18 kg (40 lb)

This bike rack must be anchored.
 Our warranty applies when our product is properly installed and anchored.

CONCRETE SLABS AND ANCHORS
 7005 1 slab 610mm X 610mm X 152mm (24" X 24" X 6")
 7016 1 slab Ø 610mm X 203mm (24" X 8")
 QS 3 stainless steel kwik bolts
 QAV 3 drop-in anchors with stainless steel theft-proof bolts

Confidential information contained herein is the property of Equiparc. Intended use is limited to professionals specifying Equiparc's products and their direct clients. All information is not to be copied or disclosed to others without the written consent of Equiparc. All rights reserved - Equiparc Manufacturier d'Équipement de Parcs Inc.

DESIGN DURABILITY EXPERTISE 1001 James-Brodie Street, Saint-Jean-sur-Richelieu, Québec J2X 0C1 Canada
 Tel.: 450 346-1882 1 800 363-9264
 info@equiparc.com | equiparc.com

4 **BIKE RACK**
L4 **n.t.s.**

Copyright Reserved
 The Copyrights to all designs and drawings are the property of Fotenn Consultants Inc. Unauthorized reproduction or use is forbidden. DO NOT SCALE DRAWING
 Copyright réservés
 Les droits d'auteur à tous les modèles et dessins sont la propriété de Fotenn Consultants Inc. Reproduction ou utilisation non autorisée est interdite. NE PAS L'ÉCHELLE DE DESSIN

Client / Client

2 Robinson Property Limited Partnership

D07-12-21-0202
 #18357

key plan / plan repère



legend / légende

PRELIMINARY
 SUBJECT TO APPROVAL

rev'n	description / la description	yyyy/mm/dd
05	re-issued for SPA	2022/03/30
04	issued for SPA	2021/11/19
03	issued for coordination	2021/11/10
02	issued for client review	2021/10/29
01	issued for coordination	2021/01/26
00	issued for ZBLA	2020/12/22

FOTENN Planning + Design

396 Cooper Street, Suite 300 613.730.5709
 Ottawa, ON, CANADA K2P 2H7 fotenn.com

north / le nord

stamp / le cachet

project / projet

2 ROBINSON PROPERTY LIMITED PARTNERSHIP

drawing / dessin

CONSTRUCTION DETAILS

designed / conçu	drawn / dessiné	reviewed / examiné
KA / ST	ST	KA
date	project number / No. du projet	
DEC 2020	X ###-###	
drawing number / No. du dessin		

2 Robinson Property Limited Partnership

D07-12-21-0202
 #18357

key plan / plan repère



Legend / légende

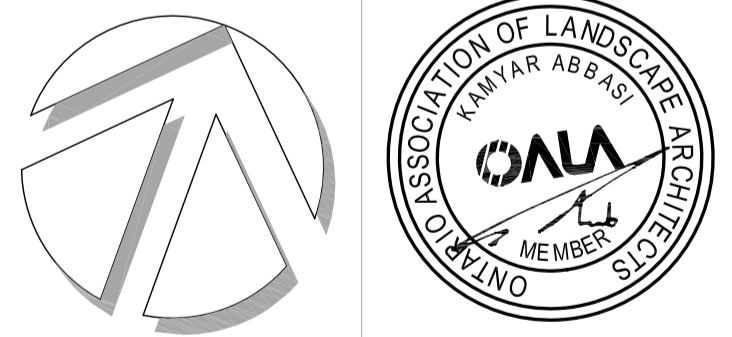
PRELIMINARY
 SUBJECT TO APPROVAL

rev'n	description / la description	yyyy/mm/dd
05	re-issued for SPA	2022/03/30
04	issued for SPA	2021/11/19
03	issued for coordination	2021/11/10
02	issued for client review	2021/10/29
01	issued for coordination	2021/01/26
00	issued for ZBLA	2020/12/22

FOTENN Planning + Design
 396 Cooper Street, Suite 300
 Ottawa, ON, CANADA K2P 2H7
 613.730.5709
 fotenn.com

north / le nord

stamp / le cachet



project / projet

2 ROBINSON PROPERTY LIMITED PARTNERSHIP

drawing / dessin

CONSTRUCTION DETAILS

designed / conçu	drawn / dessiné	reviewed / examiné
KA / ST	ST	KA
date	project number / No. du projet	
DEC 2020	X ##-##	
drawing number / No. du dessin		

L5 of 5

DECIDUOUS TREE PLANTING

REMOVE DAMAGED OR OBJECTIONABLE BRANCHES, FOLLOW THE MOST RECENT CANADIAN NURSERY & TRADES ASSOCIATION PRACTICE. DO NOT PRUNE LEADER.

TREE WRAP APPLIED SPIRALLY FROM GROUND UP TO HEIGHT OF SECOND BRANCHES

CONSTRUCT 100mm SAUCER AROUND TREE BASE. FILL WITH 75mm WOODCHIP MULCH. PULL BACK MULCH FROM BASE OF TREE. ENSURE THAT MULCH COVERS ALL EXPOSED SOIL.

MINIMUM 1 STAKE 2400mm LONG ON WINDWARD SIDE. SECURE WITH NO. 12 GALVANIZED WIRE ENCASED IN 12mm DIAMETER RUBBER HOSE, ALLOWING SLACK IN GALVANIZED WIRE. REMOVE STAKES AFTER ONE YEAR. STAKE BEYOND EDGE OF ROOT BALL.

ROOT COLLAR TO BE SET 100mm ABOVE FINISHED GRADE

TOPSOIL MIXTURE AS PER SPECIFICATION

NOTE:
 1. ALL MEASUREMENTS ARE IN MILLIMETRES UNLESS OTHERWISE NOTED
 2. LOCATION AS SPECIFIED ON THE CONTRACT DRAWINGS

CUT AND REMOVE BURLAP AND WIRE BASKET FROM TOP 2/3 OF ROOT BALL WITHOUT DISTURBING ROOTS

COMPACTED ROOT BALL SUPPORT PAD

CONIFEROUS TREE PLANTING

REMOVE DAMAGED OR OBJECTIONABLE BRANCHES, FOLLOW THE MOST RECENT CANADIAN NURSERY & TRADES ASSOCIATION PRACTICE. DO NOT PRUNE LEADER.

CONSTRUCT 100mm SAUCER AROUND TREE BASE. FILL WITH 75mm WOODCHIP MULCH. PULL BACK MULCH FROM BASE OF TREE. ENSURE THAT MULCH COVERS ALL EXPOSED SOIL.

MINIMUM 1 STAKE 2400mm LONG ON WINDWARD SIDE. SECURE WITH NO. 12 GALVANIZED WIRE ENCASED IN 12mm DIAMETER RUBBER HOSE, ALLOWING SLACK IN GALVANIZED WIRE. REMOVE STAKES AFTER ONE YEAR. STAKE BEYOND EDGE OF ROOT BALL.

ROOT COLLAR TO BE SET 100mm ABOVE FINISHED GRADE

TOPSOIL MIXTURE AS PER SPECIFICATION

NOTE:
 1. ALL MEASUREMENTS ARE IN MILLIMETRES UNLESS OTHERWISE NOTED
 2. LOCATION AS SPECIFIED ON THE CONTRACT DRAWINGS

CUT AND REMOVE BURLAP AND WIRE BASKET FROM TOP 2/3 OF ROOT BALL WITHOUT DISTURBING ROOTS

COMPACTED ROOT BALL SUPPORT PAD

Ottawa TITLE: PLANTING PIT, WELL DRAINED SOILS (ROAD ALLOWANCE) DATE: MAY 2001
 REV: JAN 2017
 DWG No: L3

1 TREE PLANTING
L5 n.t.s.

POORLY DRAINED SOILS

PLANTING BED AROUND SHRUBS COVER ENTIRE BED WITH 75 MM DEPTH WOODCHIP MULCH. PULL BACK MULCH FROM BASE OF SHRUBS. ENSURE THAT MULCH COVERS ALL EXPOSED SOIL.

REMOVE POTS COMPLETELY FROM POTTED STOCK OR CUT AND REMOVE BURLAP AND WIRE FROM TOP 2/3 OF ROOT BALL.

REMOVE DAMAGED OR OBJECTIONABLE BRANCHES, FOLLOW THE MOST RECENT CANADIAN NURSERY & TRADES ASSOCIATION PRACTICE.

TOPSOIL MIXTURE AS PER SPECIFICATIONS.

WEED CONTROL FABRIC AS PER SPECIFICATIONS. FOLD UNDER MIN. 150 MM AT EDGE OF BED.

TAPER TO BLEND NATURALLY WITH FINISHED GRADE

NOTE:
 1. ALL DIMENSIONS ARE IN MILLIMETRES.

WELL DRAINED SOILS

PLANTING BED AROUND SHRUBS COVER ENTIRE BED WITH 75 MM DEPTH WOODCHIP MULCH. PULL BACK MULCH FROM BASE OF SHRUBS. ENSURE THAT MULCH COVERS ALL EXPOSED SOIL.

REMOVE POTS COMPLETELY FROM POTTED STOCK OR CUT AND REMOVE BURLAP AND WIRE FROM TOP 2/3 OF ROOT BALL.

REMOVE DAMAGED OR OBJECTIONABLE BRANCHES, FOLLOW THE MOST RECENT CANADIAN NURSERY & TRADES ASSOCIATION PRACTICE.

TOPSOIL MIXTURE AS PER SPECIFICATIONS.

WEED CONTROL FABRIC AS PER SPECIFICATIONS. FOLD UNDER MIN. 150 MM AT EDGE OF BED.

NOTE:
 1. ALL DIMENSIONS ARE IN MILLIMETRES.

Ottawa TITLE: SHRUB BED PLANTING DATE: MAY 2001
 REV: NONE
 DWG. No.: L4

2 SHRUB PLANTING
L5 n.t.s.

REMOVE FROM POT 75mm SHREDDED BARK MULCH

PLANT PERENNIALS AND GRASSES 25mm HIGHER THAN ADJACENT GRADE

SAUCER

PLANTING SOIL MIX: LIGHTLY COMPACT TO ELIMINATE AIR POCKETS AND PREVENT SETTLEMENT

VARIES WITH SPECIES

SCARIFY SUBGRADE OF PLANTING BED

NOTE:
 1. ALL DIMENSIONS ARE IN MILLIMETRES UNLESS OTHERWISE NOTED.
 2. PLANTING SOIL MIXTURE AS PER SPECIFICATION.
 3. PROVIDE 100MM HIGH EARTH SAUCER AROUND PERENNIAL/GRASS BED.

Ottawa TITLE: PERENNIAL AND ORNAMENTAL GRASS PLANTING DATE: JAN 2015
 REV:
 DWG No: L21

3 PERENNIAL AND GRASS PLANTING
L5 n.t.s.