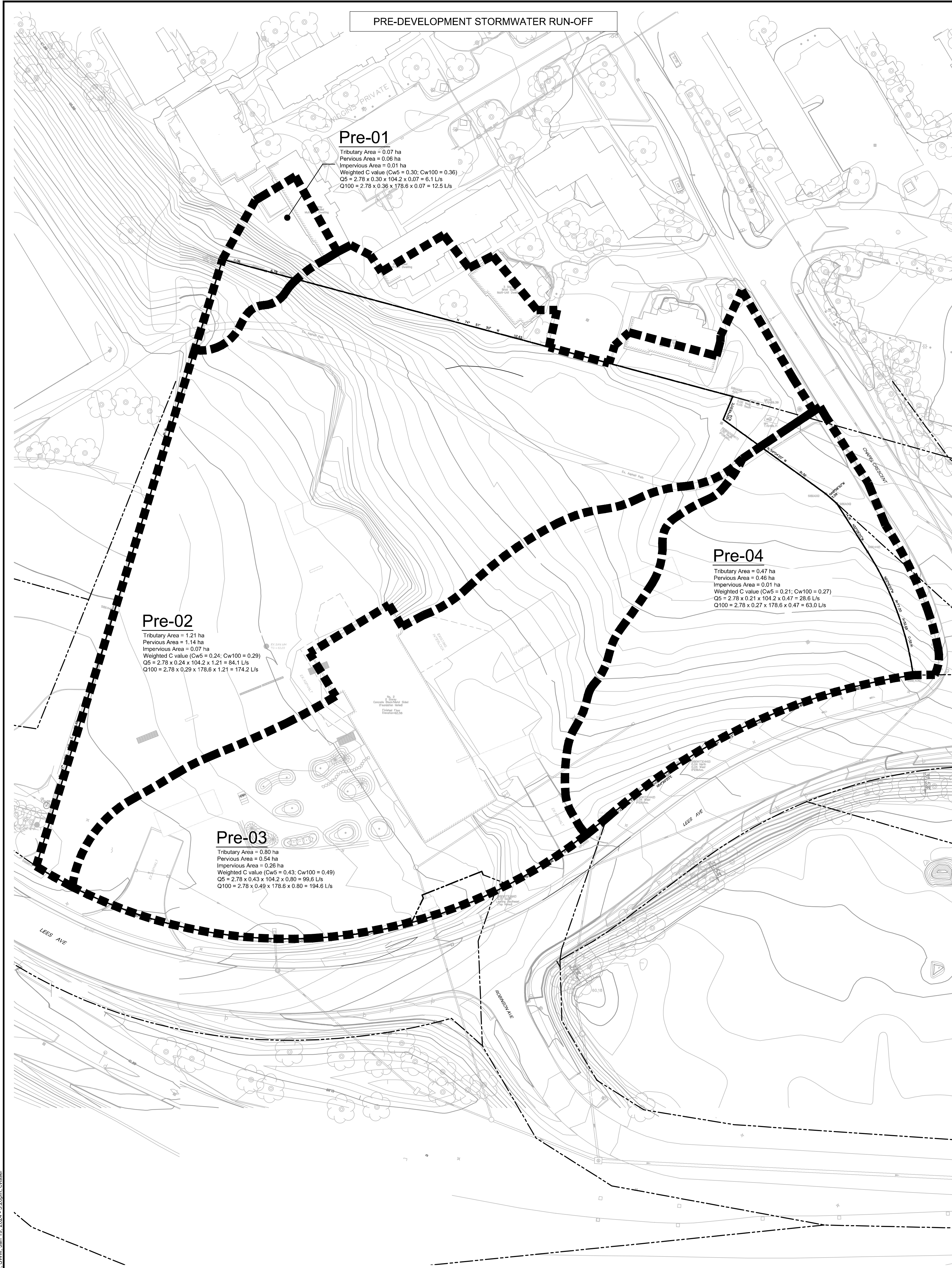
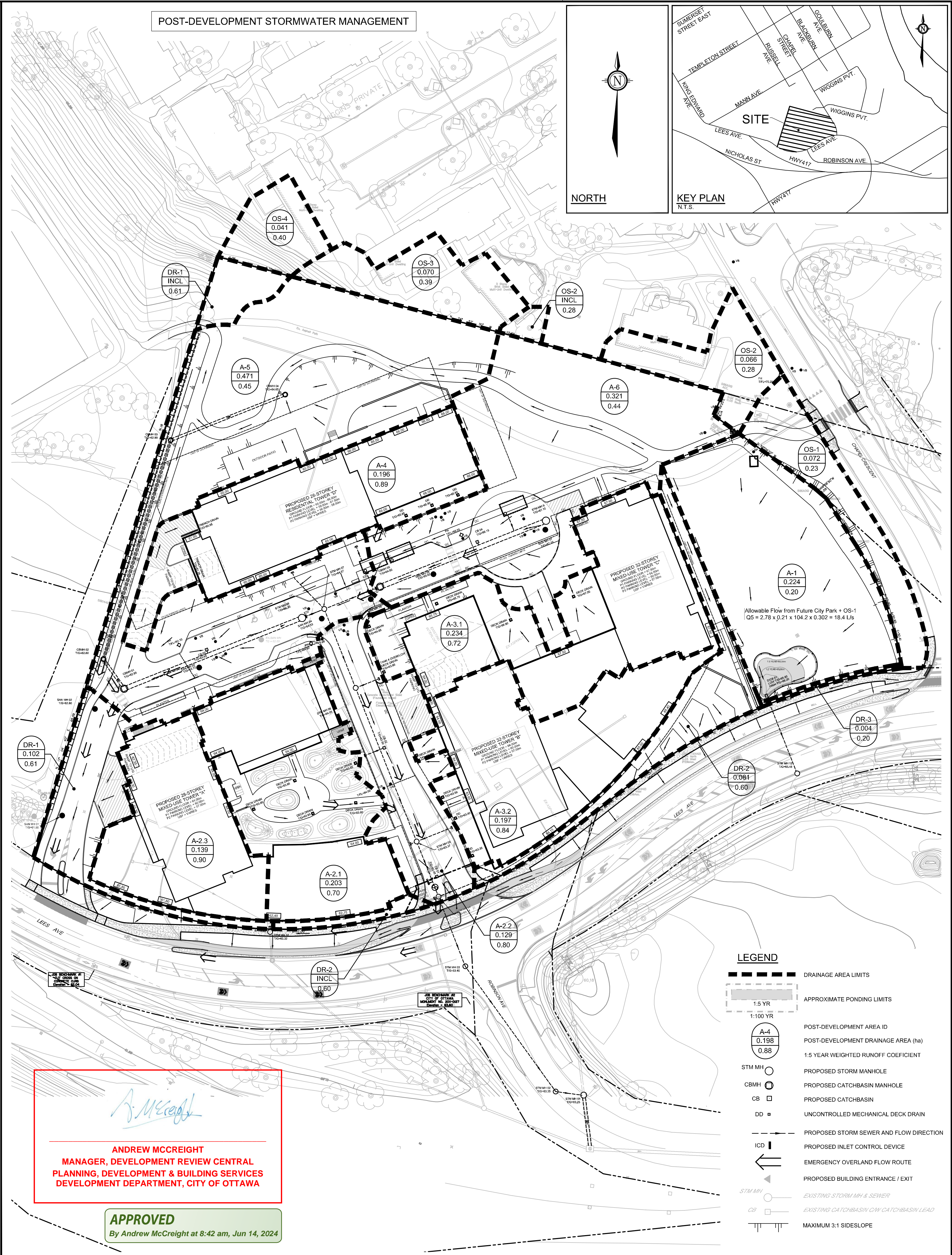


PRE-DEVELOPMENT STORMWATER RUN-OFF



POST-DEVELOPMENT STORMWATER MANAGEMENT



NOTE:
 THE POSITION OF ALL POLE LINES, CONDUITS,
 WATERMANS, SEWERS AND OTHER
 UNDERGROUND AND OVERGROUND UTILITIES AND
 STRUCTURES IS NOT NECESSARILY SHOWN ON
 THE CONTRACT DRAWINGS, AND WHERE SHOWN,
 THE ACCURACY OF THE POSITION OF SUCH
 UTILITIES AND STRUCTURES IS NOT GUARANTEED.
 BEFORE STARTING WORK, DETERMINE THE EXACT
 LOCATION OF ALL SUCH UTILITIES AND
 STRUCTURES AND ASSUME ALL LIABILITY FOR
 DAMAGE TO THEM.

OWNER INFORMATION
 2 ROBINSON AVENUE LIMITED PARTNERSHIP
 88 ALBERT STREET
 OTTAWA, ONTARIO, K1P 5E9
 CONTACT: MR. KIERAN WAUGH
 PHONE: (416) 903-1377
 EMAIL: kwaugh@placedoree.com

No.	REVISION	DATE	BY
6	REVISED PER CITY COMMENTS	JAN 19/24	FST
5	REVISED SIDEWALK/BICYCLE TRACK ALONG LEES AVE.	NOV 3/23	FST
4	RE-ISSUED FOR SITE PLAN APPROVAL	MAR 1/23	FST
3	RE-ISSUED FOR SITE PLAN APPROVAL	OCT 07/22	FST
2	REVISED PER CITY COMMENTS / UPDATED SITE PLAN	MAR 30/21	FST
1	ISSUED FOR SITE PLAN APPROVAL	NOV 15/21	FST

SCALE	DESIGN
1:500	SM / FST
1:500	FST
1:500	DM / SM
1:500	SM / FST
1:500	FST

FOR REVIEW ONLY

DESIGNED BY: SM / FST
 CHECKED BY: FST
 DRAWN BY: DM / SM
 CHECKED BY: SM / FST
 APPROVED BY: FST

PROFESSIONAL ENGINEER
 F.S. THAUETZ
 100041509
 January 19, 2024
 PROVINCE OF ONTARIO

NOVATECH
 Engineers, Planners & Landscape Architects
 Suite 200, 240 Michael Comland Drive
 Ottawa, Ontario, Canada K2M 1R6
 Telephone: (613) 254-9643
 Facsimile: (613) 254-5567
 Website: www.novatech-eng.com

LOCATION
 CITY OF OTTAWA
 320 LEES AVENUE (2 ROBINSON AVENUE)

DRAWING NAME
**STORMWATER
 MANAGEMENT PLAN**

PROJECT NO.: 119171
 REV # 6
 DRAWING NO.: 119171-SWM

D07-12-21-0202