

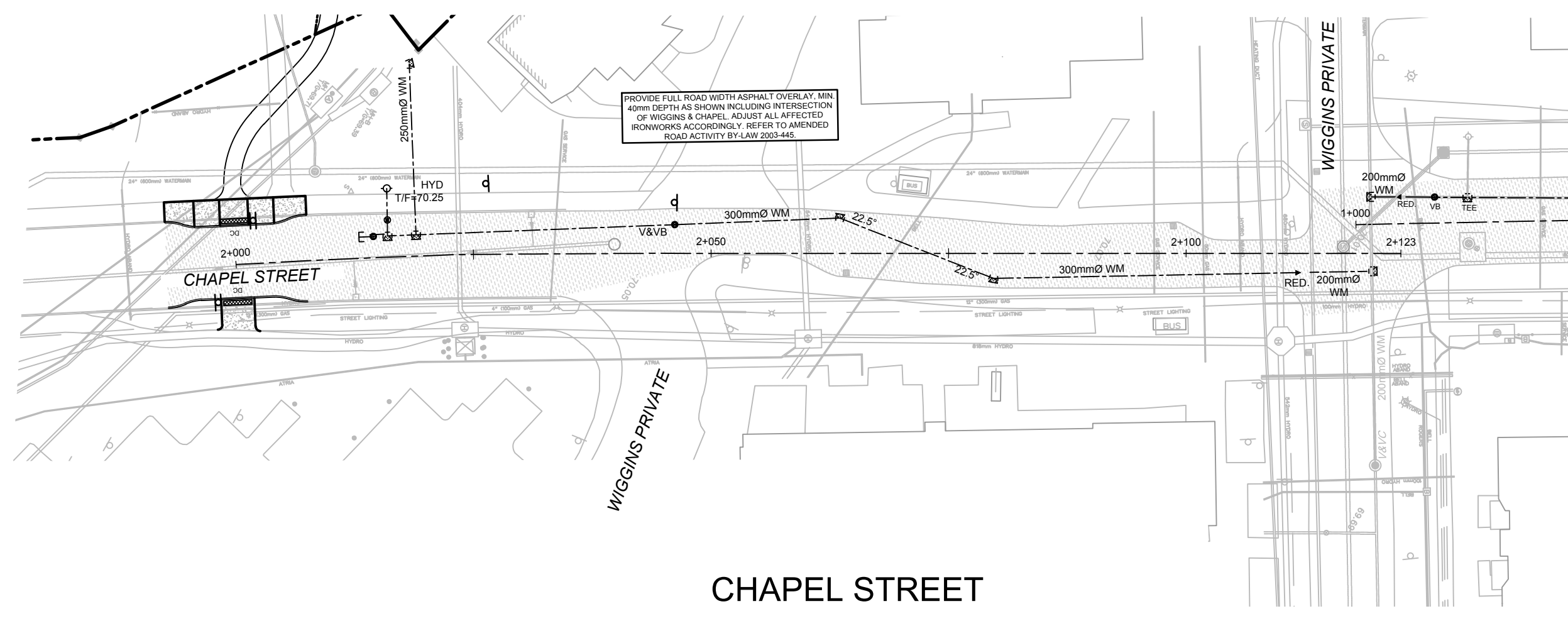
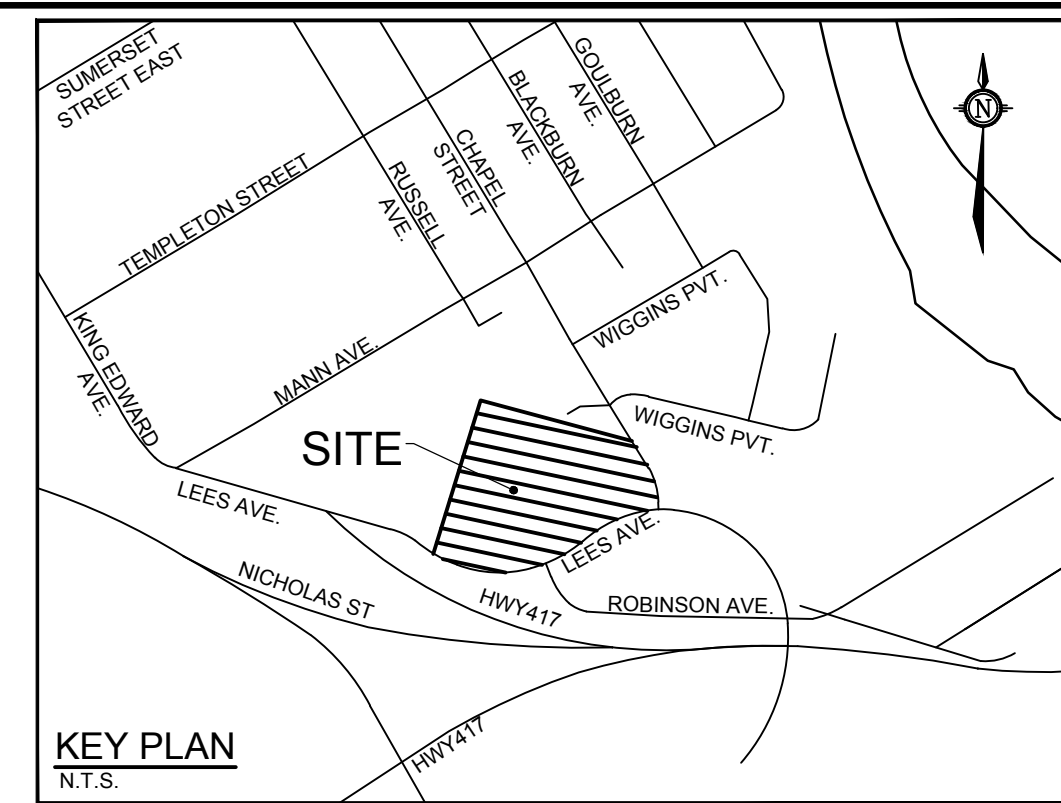
BENCHMARK INFO:

CITY OF OTTAWA MONUMENT No. 2011-0127 LOCATED NEAR THE SOUTH-WEST CORNER OF THE INTERSECTION OF LEES AVENUE AND ROBINSON AVENUE. GEODETIC ELEVATION = 65.40m.

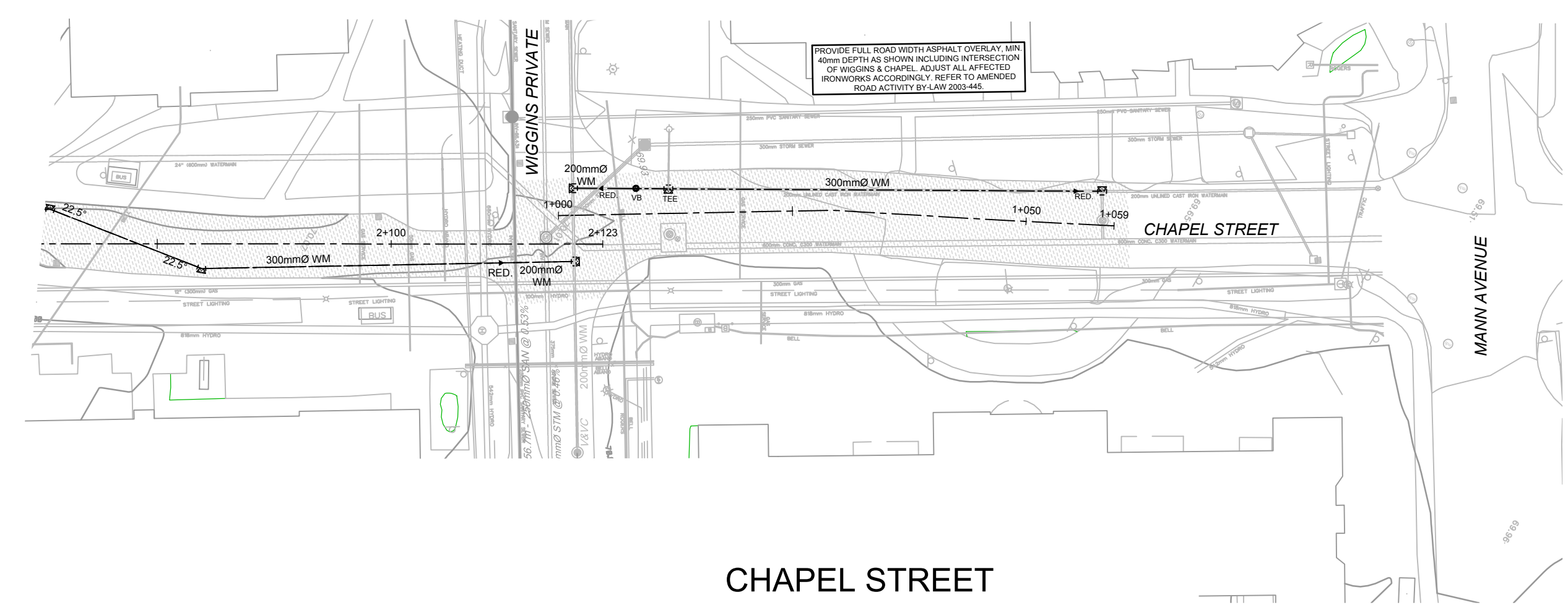
ALL ELEVATIONS ARE REFERRED TO THE CGVD28 GEODETIC DATUM, DERIVED FROM VERTICAL CONTROL MONUMENT NO. 3603 HAVING AN ELEVATION OF 76.959 METRES. BEARINGS ARE GRID, DERIVED FROM THE NORTHERLY LIMIT OF PART 1 ON PLAN 4R-1381 AND ARE REFERRED TO THE CENTRAL MERIDIAN OF MTM ZONE 9 (76°30' WEST LONGITUDE) NAD 83 (ORIGINAL).

THE EXISTING GRADES SHOWN ON THE PLANS ARE TAKEN DIRECTLY FROM TOPOGRAPHICAL SURVEY PLAN (Ref. # 21029-20 JRE L1 PL 49 F), PREPARED BY ANNIS, O'SULLIVAN, VOLLEBEKK SIGNED AND DATED AUGUST 14, 2020.

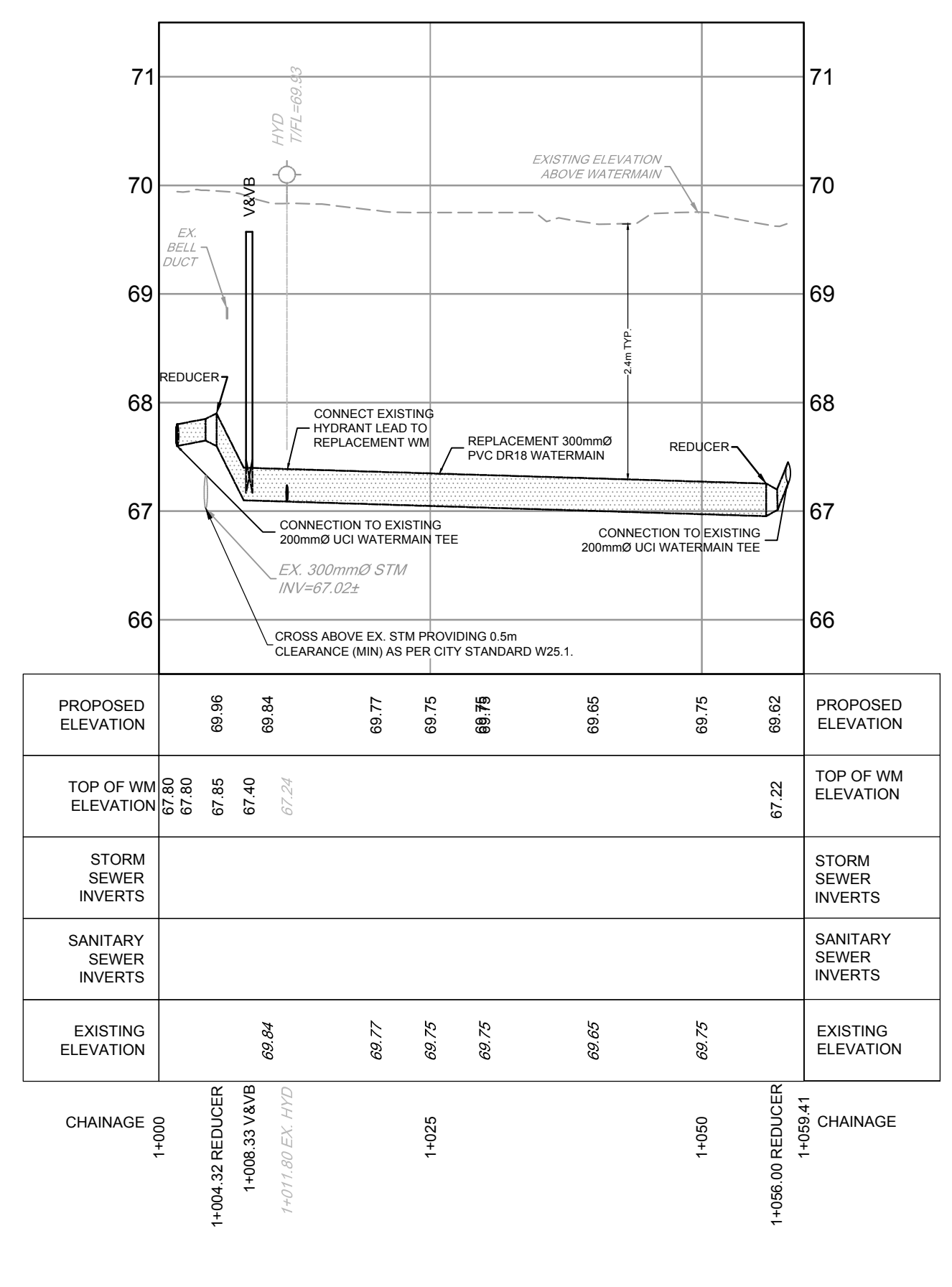
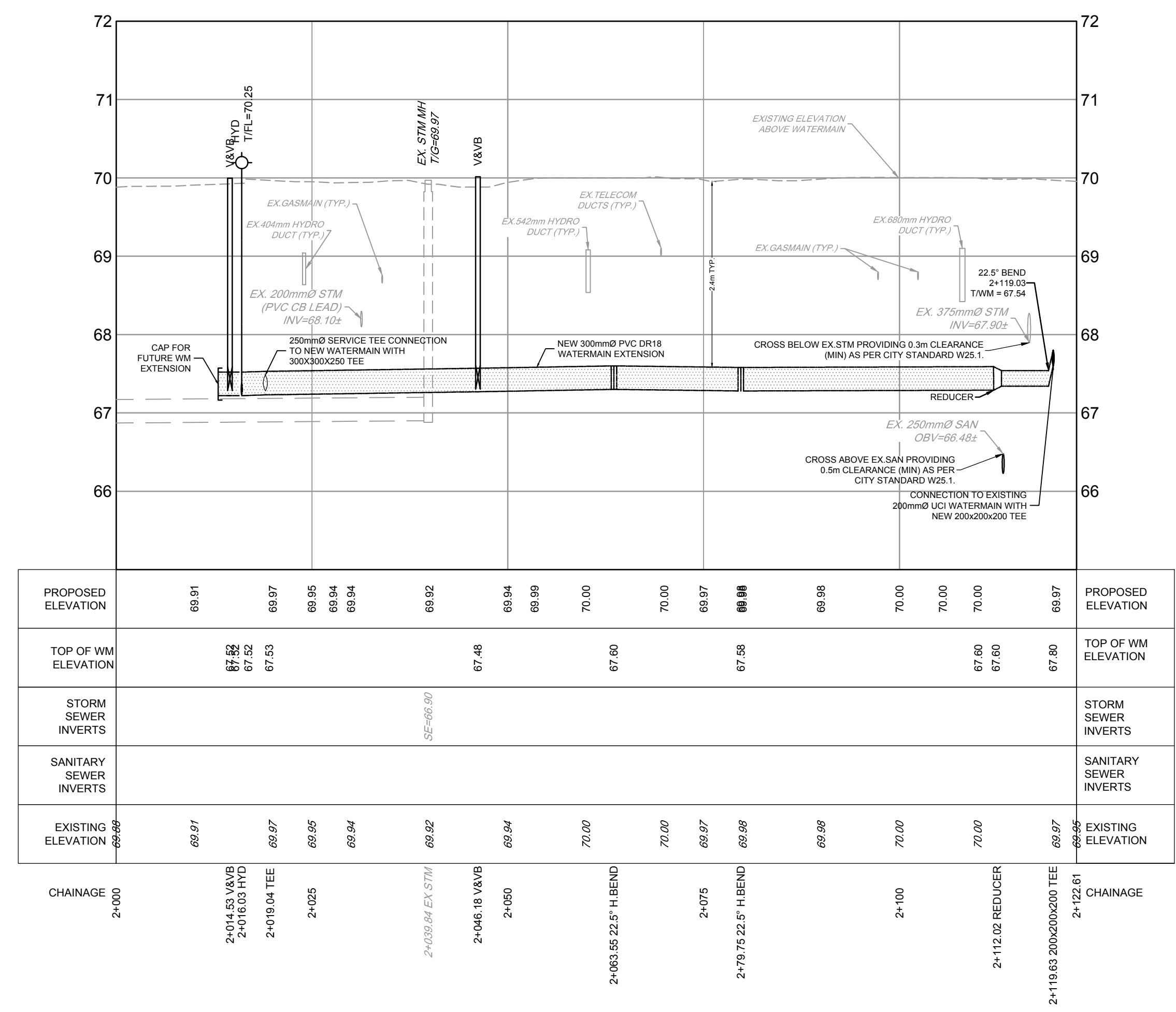
SURROUNDING BACKGROUND TOPO INFORMATION BEYOND THE LIMITS OF THE SITE SURVEY ARE SHOWN FROM CITY OF OTTAWA 1:1000 MAPPING FOR CONTEXT ONLY.



CHAPEL STREET

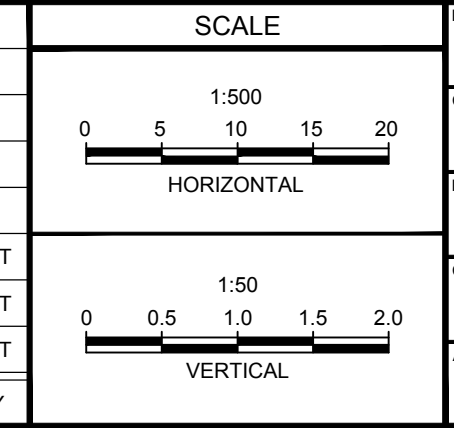


CHAPEL STREET



NOTE:
THE POSITION OF ALL POLE LINES, CONDUITS, WATERMANS, SEWERS AND OTHER UNDERGROUND AND OVERGROUND UTILITIES AND STRUCTURES IS NOT NECESSARILY SHOWN ON THE CONTRACT DRAWINGS, AND WHERE SHOWN, THE ACCURACY OF THE POSITION OF SUCH UTILITIES AND STRUCTURES IS NOT GUARANTEED. BEFORE STARTING WORK, DETERMINE THE EXACT LOCATION OF ALL SUCH UTILITIES AND STRUCTURES AND ASSUME ALL LIABILITY FOR DAMAGE TO THEM.

No.	REVISION	DATE	BY
3	RE-ISSUED FOR SITE PLAN APPROVAL	OCT 07/22	FST
2	REVISED PER CITY COMMENTS	MAR 20/21	FST
1	ISSUED FOR SITE PLAN APPROVAL	NOV 15/21	FST



DESIGN	DWM
CHECKED	FST
DRAWN	DWM
CHECKED	FST
APPROVED	FST

FOR REVIEW ONLY

LOCATION: OTTAWA, ONTARIO, 2 ROBINSON AVE.

DRAWING NAME: PLAN AND PROFILE CHAPEL AVENUE, STATION 1+000 TO 1+060 CHAPEL AVENUE, STATION 2+000 TO 2+123

NOVATECH
Engineers, Planners & Landscape Architects
Suite 200, 240 Michael Cowpland Drive
Ottawa, Ontario, Canada K2M 1P6
Telephone: (613) 254-9643
Facsimile: (613) 254-5867
Website: www.novatech-eng.com

PROJECT No.: 119171
REV #3
DRAWING No.: 119171-PR1
18357

C:\Users\119171\OneDrive\119171-PR1.dwg, PLOT, Oct 05, 2022, 2:17pm, dmanana

D07-12-21-0202