

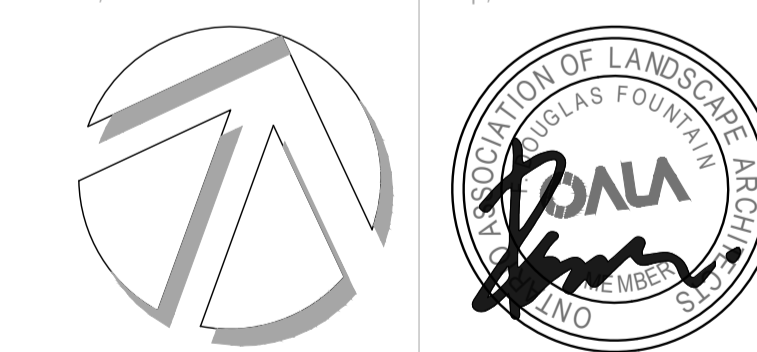


- BOUNDARY OF APPLICATION
- PARKLAND DEDICATION
- CONCRETE PAVING
- LAWN
- GROUND COVER
- BOTTOMLESS RAISED METAL PLANTER
- SHRUB / PERENNIAL PLANTING BED
- EXISTING VEGETATION TO REMAIN
- PROPOSED DECIDUOUS TREE PLANTING (LARGE, MEDIUM & SMALL)
- PROPOSED CONIFEROUS TREE PLANTING
- PROPOSED TREE (SEE NOTE #13 ON L1)
- BERM TO ALLOW FOR TREE PLANTING ON TOP OF P1 SLAB

rev'n	description / la description	yyyy/mm/dd
09	re-issued for SPA	2023/11/13
08	re-issued for SPA	2023/10/31
07	re-issued for SPA	2023/01/06
06	re-issued for SPA	2022/10/07
05	re-issued for SPA	2022/03/30
04	issued for SPA	2021/11/19
03	issued for coordination	2021/11/10
02	issued for client review	2021/10/29
01	issued for coordination	2021/01/26
00	issued for ZBLA	2020/12/22

**FOTENN Planning + Design**  
 396 Cooper Street, Suite 300  
 Ottawa, ON, CANADA K2P 2H7  
 613.730.5709  
 fotenn.com

north / le nord stamp / le cachet



project / projet

**320 LEES AVENUE (2 ROBINSON)**

drawing / dessin

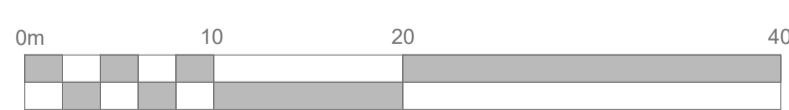
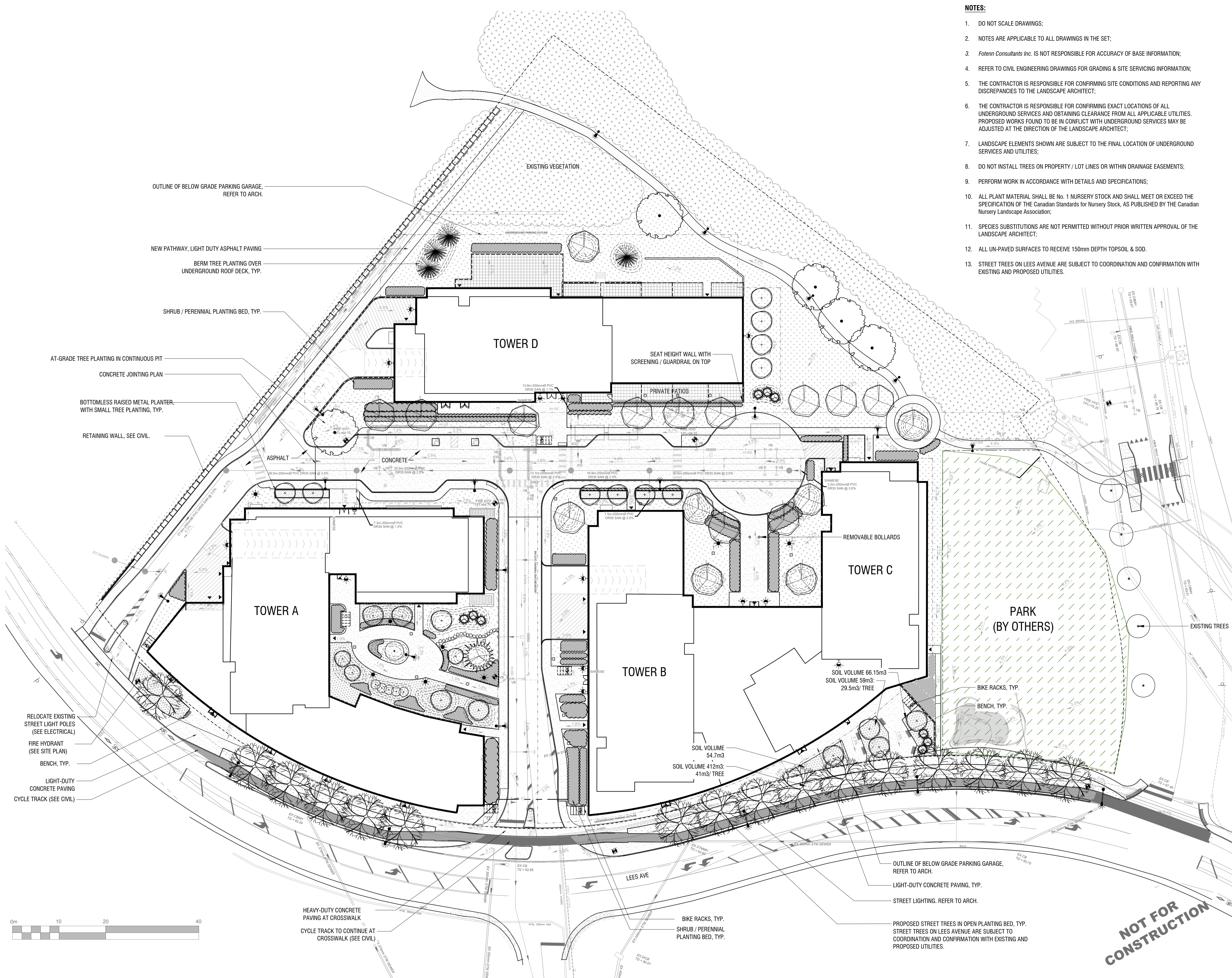
**LANDSCAPE PLAN**

designed / conçu	drawn / dessiné	reviewed / examiné
ST / DF	ST / MB	DF
date	project number / No. du projet	
JAN 2023	D07-12-21-0202 / #18357	

drawing number / No. du dessin

**NOTES:**

1. DO NOT SCALE DRAWINGS;
2. NOTES ARE APPLICABLE TO ALL DRAWINGS IN THE SET;
3. Fotenn Consultants Inc. IS NOT RESPONSIBLE FOR ACCURACY OF BASE INFORMATION;
4. REFER TO CIVIL ENGINEERING DRAWINGS FOR GRADING & SITE SERVICING INFORMATION;
5. THE CONTRACTOR IS RESPONSIBLE FOR CONFIRMING SITE CONDITIONS AND REPORTING ANY DISCREPANCIES TO THE LANDSCAPE ARCHITECT;
6. THE CONTRACTOR IS RESPONSIBLE FOR CONFIRMING EXACT LOCATIONS OF ALL UNDERGROUND SERVICES AND OBTAINING CLEARANCE FROM ALL APPLICABLE UTILITIES. PROPOSED WORKS FOUND TO BE IN CONFLICT WITH UNDERGROUND SERVICES MAY BE ADJUSTED AT THE DIRECTION OF THE LANDSCAPE ARCHITECT;
7. LANDSCAPE ELEMENTS SHOWN ARE SUBJECT TO THE FINAL LOCATION OF UNDERGROUND SERVICES AND UTILITIES;
8. DO NOT INSTALL TREES ON PROPERTY / LOT LINES OR WITHIN DRAINAGE EASEMENTS;
9. PERFORM WORK IN ACCORDANCE WITH DETAILS AND SPECIFICATIONS;
10. ALL PLANT MATERIAL SHALL BE No. 1 NURSERY STOCK AND SHALL MEET OR EXCEED THE SPECIFICATION OF THE Canadian Standards for Nursery Stock, AS PUBLISHED BY THE Canadian Nursery Landscape Association;
11. SPECIES SUBSTITUTIONS ARE NOT PERMITTED WITHOUT PRIOR WRITTEN APPROVAL OF THE LANDSCAPE ARCHITECT;
12. ALL UN-PAVED SURFACES TO RECEIVE 150mm DEPTH TOPSOIL & SOD.
13. STREET TREES ON LEES AVENUE ARE SUBJECT TO COORDINATION AND CONFIRMATION WITH EXISTING AND PROPOSED UTILITIES.



**NOT FOR CONSTRUCTION**

**PLANTING SCHEDULE**

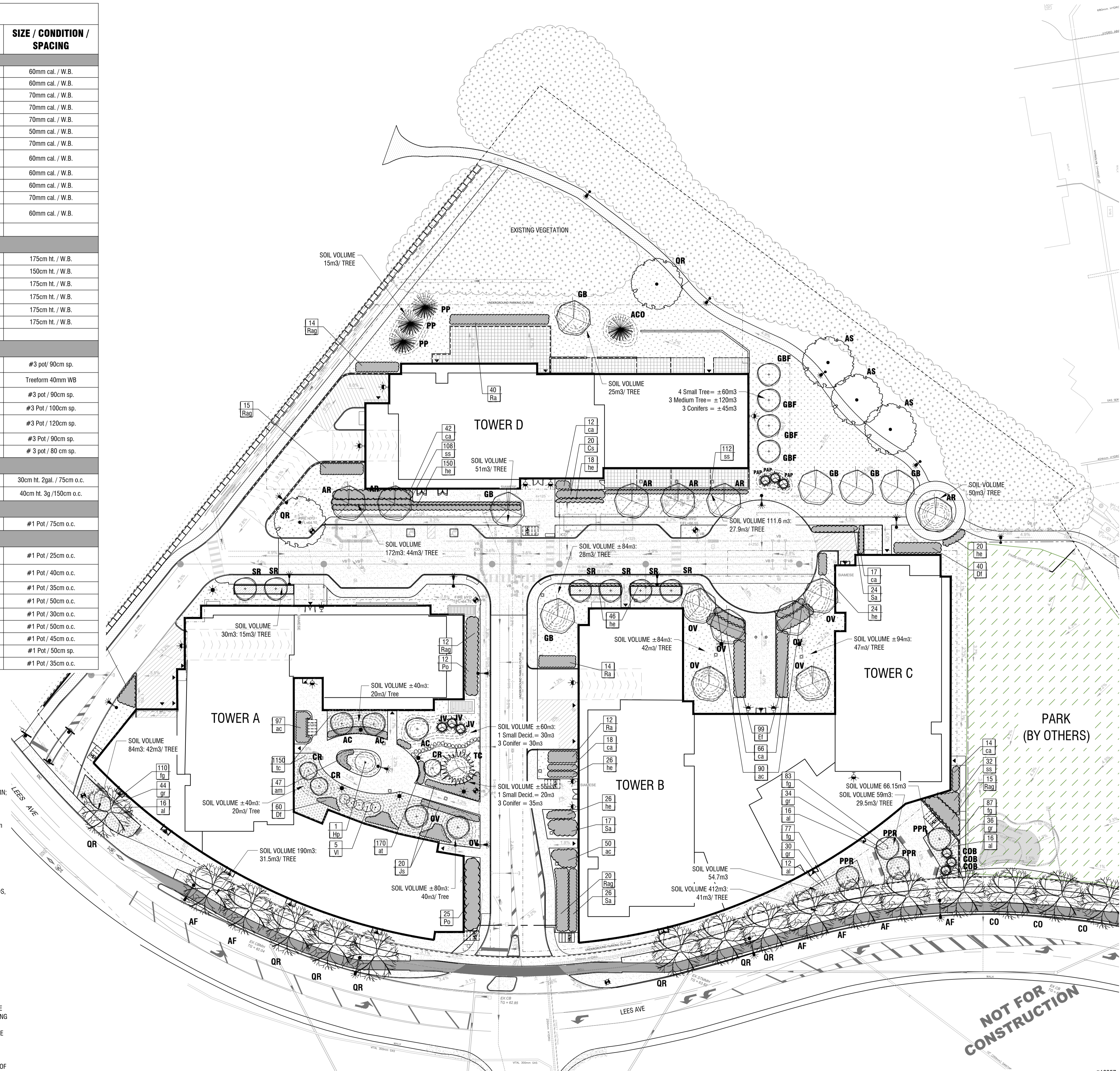
KEY	QTY.	BOTANICAL NAME	COMMON NAME	SIZE / CONDITION / SPACING
<b>DECIDUOUS TREES</b>				
AC	3	Amelanchier canadensis	Serviceberry	60mm cal. / W.B.
AF	6	Acer freemanii	Freeman Maple	60mm cal. / W.B.
AR	6	Acer rubrum	Red Maple	70mm cal. / W.B.
AS	3	Acer saccharum	Sugar Maple	70mm cal. / W.B.
CO	3	Celtis occidentalis	Common Hackberry	70mm cal. / W.B.
CR	3	Cornus racemosa	Gray Dogwood	50mm cal. / W.B.
GB	6	Ginkgo biloba	Maidenhair Tree	70mm cal. / W.B.
GBF	4	Ginkgo biloba 'fastigiata'	Columnar Maidenhair Tree	60mm cal. / W.B.
OV	8	Ostrya virginiana	Ironwood	60mm cal. / W.B.
PPR	4	Parrotia persica	Persian Ironwood	60mm cal. / W.B.
QR	12	Quercus rubra	Red Oak	70mm cal. / W.B.
SR	6	Syringa reticulata 'Ivory Silk'	Ivory Silk Tree Lilac	60mm cal. / W.B.
TOTAL	64			
<b>CONIFEROUS TREES</b>				
ACO	1	Abies concolor	White Fir	175cm ht. / W.B.
COB	3	Chamaecyparis obtusa 'compacta'	Hinoki Falsecypress	150cm ht. / W.B.
JV	3	Juniperus virginiana 'Taylor'	Taylor Eastern Red Cedar	175cm ht. / W.B.
PAP	3	Picea abies 'pyramidata'	Pyramidal Norway Spruce	175cm ht. / W.B.
PP	3	Picea pungens	Colorado Spruce	175cm ht. / W.B.
TC	1	Tsuga canadensis	Eastern hemlock	175cm ht. / W.B.
TOTAL	14			
<b>DECIDUOUS SHRUBS</b>				
Cs	20	Cornus sericea 'Arctic Fire'	Arctic Fire Dogwood	#3 pot/ 90cm sp.
Hp	1	Hydrangea paniculata 'grandiflora'	Panicle Hydrangea	Treeform 40mm WB
Po	37	Physocarpus opulifolius 'Monro'	Diabolo Ninebark	#3 pot / 90cm sp.
Ra	66	Ribes alpinum	Alpine Currant	#3 Pot / 100cm sp.
Rag	74	Rhus aromatica 'Gro-Low'	Gro-Low Fragrant Sumac	#3 Pot / 120cm sp.
Sa	67	Symphoricarpos albus	Snowberry	#3 Pot / 90cm sp.
VI	5	Viburnum lentago	Nannyberry	# 3 pot / 80 cm sp.
<b>EVERGREEN SHRUBS</b>				
Et	99	Euonymus Fortunei 'Emerald Gaiety'	Emerald Gaiety Euonymus	30cm ht. 2gal. / 75cm o.c.
Js	20	Juniperus sabinna var. tamariscifolia	Tamarix Juniper	40cm ht. 3g / 150cm o.c.
<b>FERNS</b>				
Df	100	Dryopteris filix-mas	Male Fern	#1 Pot / 75cm o.c.
<b>PERENNIALS &amp; GRASSES</b>				
al	60	Allium cernuum	Nodding Onion	#1 Pot / 25cm o.c.
ac	237	Astilbe chinensis 'vision in white'	False Spirea ' Vision in White'	#1 Pot / 40cm o.c.
at	170	Asclepias tuberosa	Butterfly milkweed	#1 Pot / 35cm o.c.
ca	169	Calamagrostis acutiflora 'Karl Foerster'	Feather Reed Grass	#1 Pot / 50cm o.c.
fg	357	Festuca Glauca	Blue Fescue	#1 Pot / 30cm o.c.
gr	144	Geranium 'rozanne'	Rozanne Cranesbill	#1 Pot / 50cm o.c.
he	285	Hemerocallis 'vanilla fluff'	'Vanilla Fluff' Daylily	#1 Pot / 45cm o.c.
ss	252	Schizachyrium scoparium	Little Bluestem	#1 Pot / 50cm sp.
tc	1150	Tiarella cordifolia	Foam Flower	#1 Pot / 35cm o.c.

**STANDARDS FOR TREE PLANTING:**

- NO PLANTING ON CORNERS OR ANYWHERE WHERE IT WOULD CREATE A SIGHT LINE CONCERN;
- MAINTAIN A MINIMUM DISTANCE OF 7.5m FROM ALL BUILDINGS;
- MAINTAIN A MINIMUM DISTANCE OF 2.5m FROM THE CURB FOR DECIDUOUS TREES AND 4.5m FOR CONIFEROUS TREES;
- MAINTAIN A MINIMUM DISTANCE OF 1.5m FOR DECIDUOUS (4.5m FOR CONIFERS) FROM ANY SIDEWALK OR PRIVATE WALKWAY;
- MAINTAIN A MINIMUM DISTANCE OF 1.2m FROM ALL DRIVEWAYS;
- MAINTAIN A MINIMUM DISTANCE OF 2.5m FROM COMMUNITY MAILBOXES, LIGHT STANDARDS, FIRE HYDRANTS AND NO PLANTING IN FRONT OF HYDRANTS;
- MAINTAIN A MINIMUM DISTANCE OF 3.0m FROM ALL HYDRO TRANSFORMERS;
- MAINTAIN A MINIMUM DISTANCE OF 1.0m FROM ALL UNDERGROUND SERVICES;
- MAINTAIN A MINIMUM DISTANCE OF 1.0m FROM ALL BELL AND CABLE BOXES;
- MAINTAIN A MINIMUM DISTANCE OF 10.0 FROM BUS SHELTERS

**IMPORTANT NOTICE FOR CONTRACTOR:**

- THE CITY OF OTTAWA REQUIRES A Certificate of Completion (F1) Landscape Works TO BE SUBMITTED AND SEALED BY THE LANDSCAPE ARCHITECT. CONTRACTORS ARE RESPONSIBLE FOR FAMILIARIZING THEMSELVES WITH THE REQUIREMENTS OF THIS PROCESS AND PROVIDING SUFFICIENT NOTICE TO THE LANDSCAPE ARCHITECT TO CONDUCT SITE REVIEWS DURING INSTALLATION OF TREES. THE 1 YEAR WARRANTY PERIOD SHALL NOT COMMENCE UNTIL THE LANDSCAPE ARCHITECT HAS SUBMITTED THE F1 Certificate.
- PRIOR TO INSTALLATION OF TREES, THE DEVELOPER WILL CONTACT THE PLANNING AND GROWTH MANAGEMENT AND FORESTRY SERVICES TO REVIEW THE SPECIES AND LOCATION OF TREES.



Copyright Reserved  
The Copyrights to all designs and drawings are the property of Fotenn Consultants Inc. Unauthorised reproduction or use is forbidden. DO NOT SCALE DRAWING

Copyright réservés  
Les droits d'auteur à tous les modèles et dessins sont la propriété de Fotenn Consultants Inc. Reproduction ou utilisation non autorisée est interdite. NE PAS L'ÉCHELLE DE DESSIN

Client / Client

**2 ROBINSON PROPERTY LIMITED PARTNERSHIP**

D07-12-21-0202 #18357

key plan / plan repère



legend / légende

- BOUNDARY OF APPLICATION
- [Green hatched] PARKLAND DEDICATION
- [Grey hatched] CONCRETE PAVING
- [White hatched] LAWN
- [Dotted] GROUND COVER
- [Black outline] BOTTOMLESS RAISED METAL PLANTER
- [Grey outline] SHRUB / PERENNIAL PLANTING BED
- [Cloud symbol] EXISTING VEGETATION TO REMAIN
- [Circle symbols] PROPOSED DECIDUOUS TREE PLANTING (LARGE, MEDIUM & SMALL)
- [Starburst symbol] PROPOSED CONIFEROUS TREE PLANTING
- [Circle with cross] PROPOSED TREE (SEE NOTE #13 ON L1)
- [Dashed line] BERM TO ALLOW FOR TREE PLANTING ON TOP OF P1 SLAB

rev'n	description / la description	yyyy/mm/dd
09	re-issued for SPA	2023/11/13
08	re-issued for SPA	2023/10/31
07	re-issued for SPA	2023/01/06
06	re-issued for SPA	2022/10/07
05	re-issued for SPA	2022/03/30
04	issued for SPA	2021/11/19
03	issued for coordination	2021/11/10
02	issued for client review	2021/10/29
01	issued for coordination	2021/01/26
00	issued for ZBLA	2020/12/22

**FOTENN Planning + Design**  
396 Cooper Street, Suite 300  
Ottawa, ON, CANADA K2P 2H7  
613.730.5709  
fotenn.com

north / le nord

stamp / le cachet



project / projet

**320 LEES AVENUE (2 ROBINSON)**

drawing / dessin

**PLANTING PLAN**

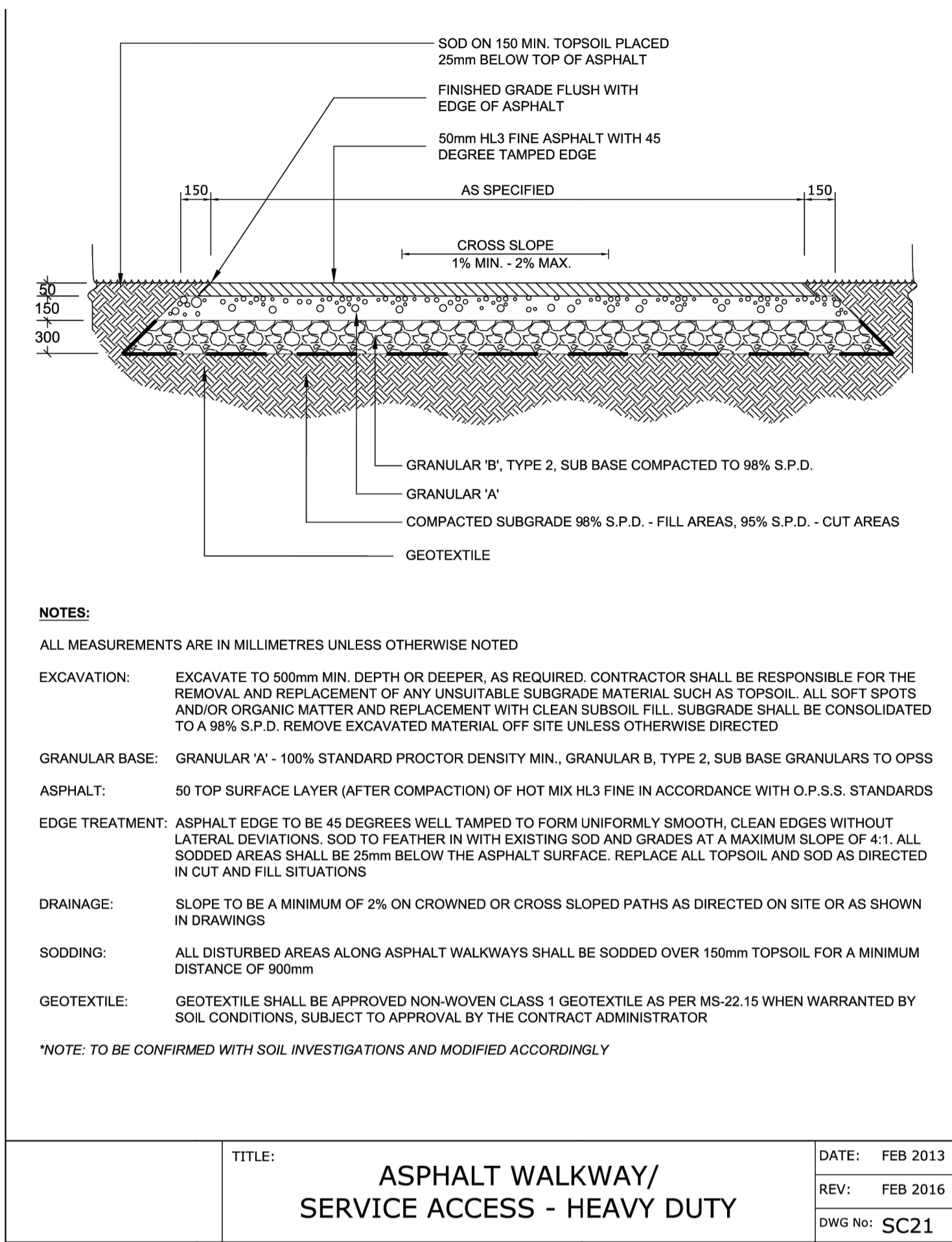
designed / conçu	drawn / dessiné	reviewed / examiné
ST / DF	ST / MB	DF

date	project number / No. du projet
JAN 2023	D07-12-21-0202 / #18357

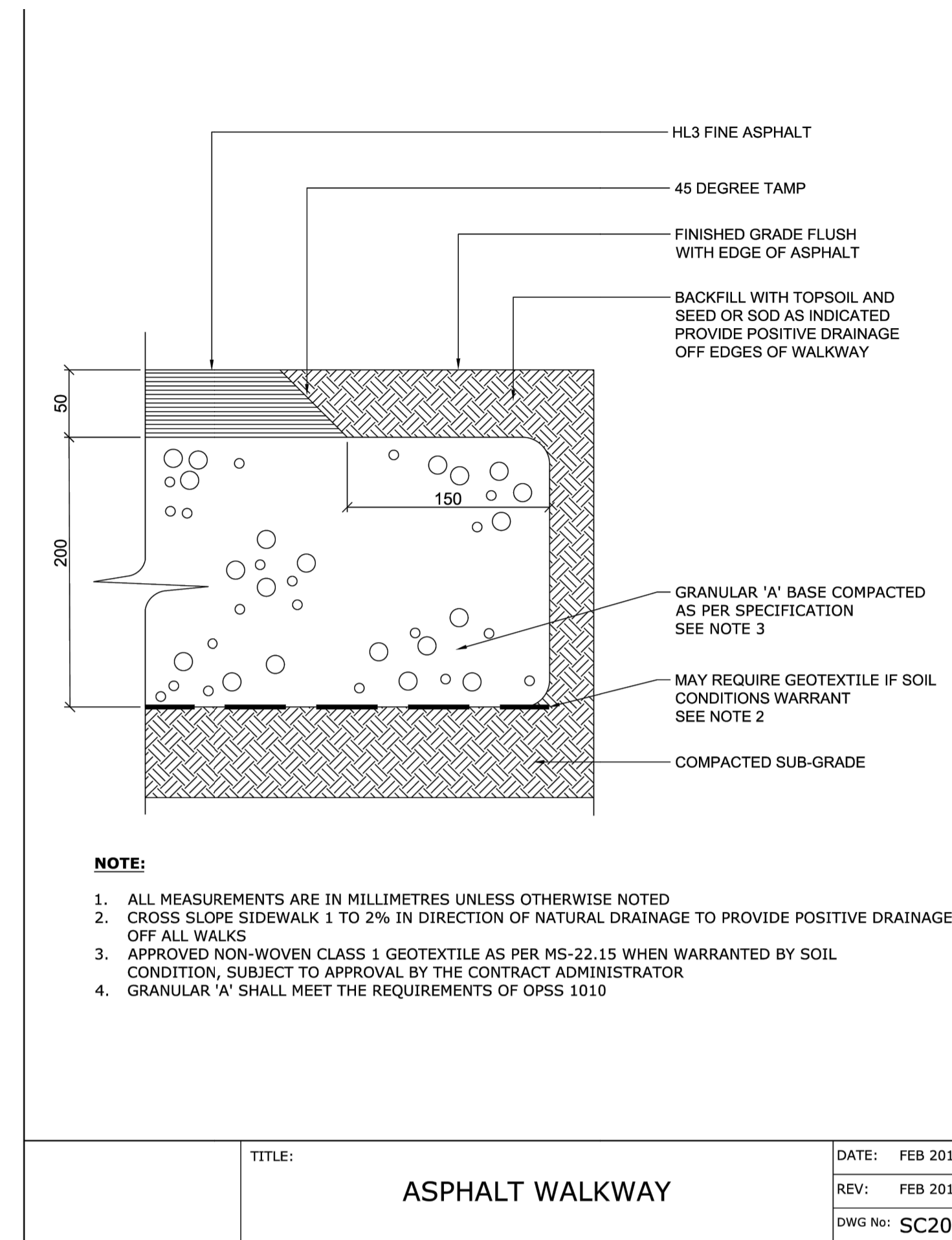
drawing number / No. du dessin

**L2 of 5**

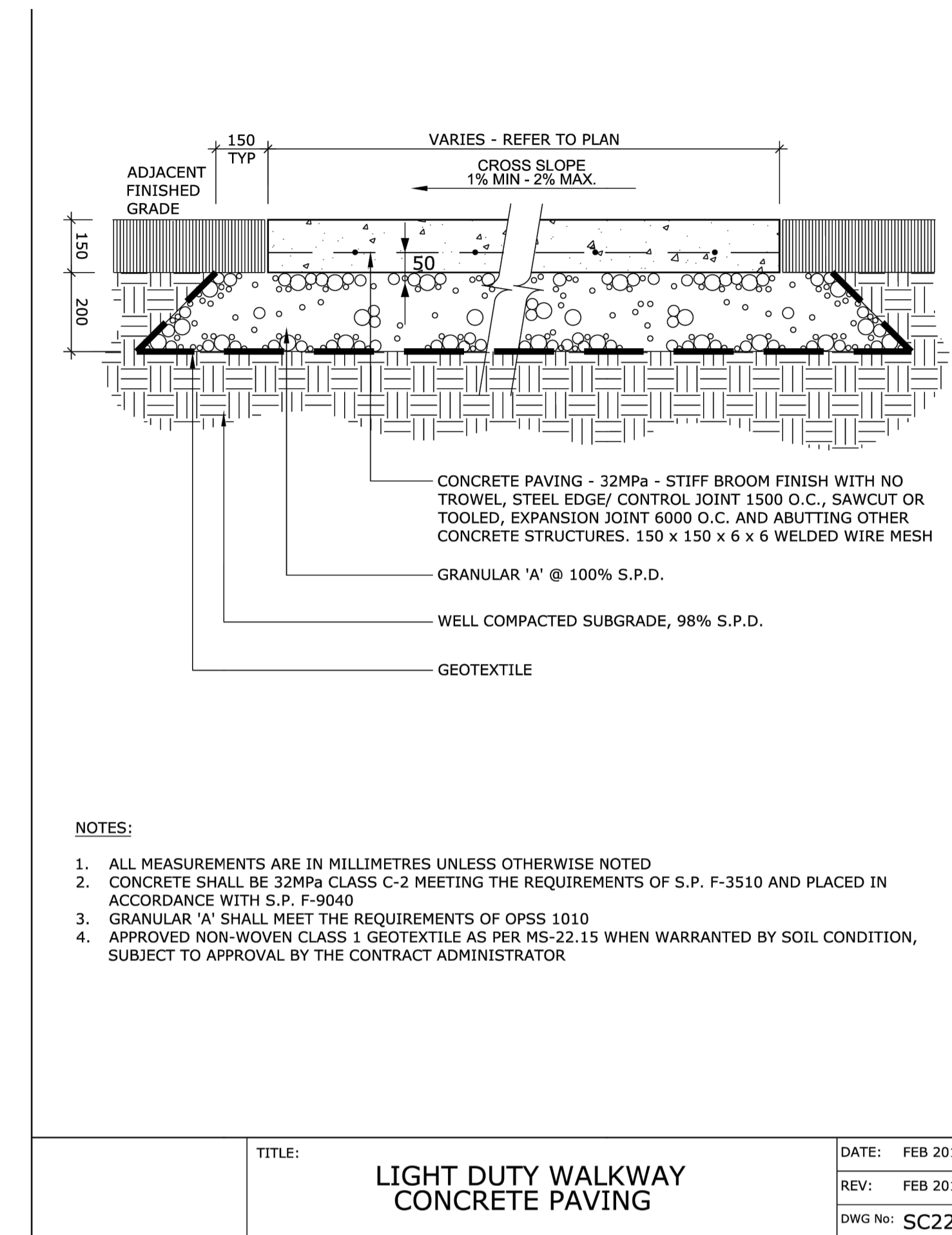
**NOT FOR CONSTRUCTION**



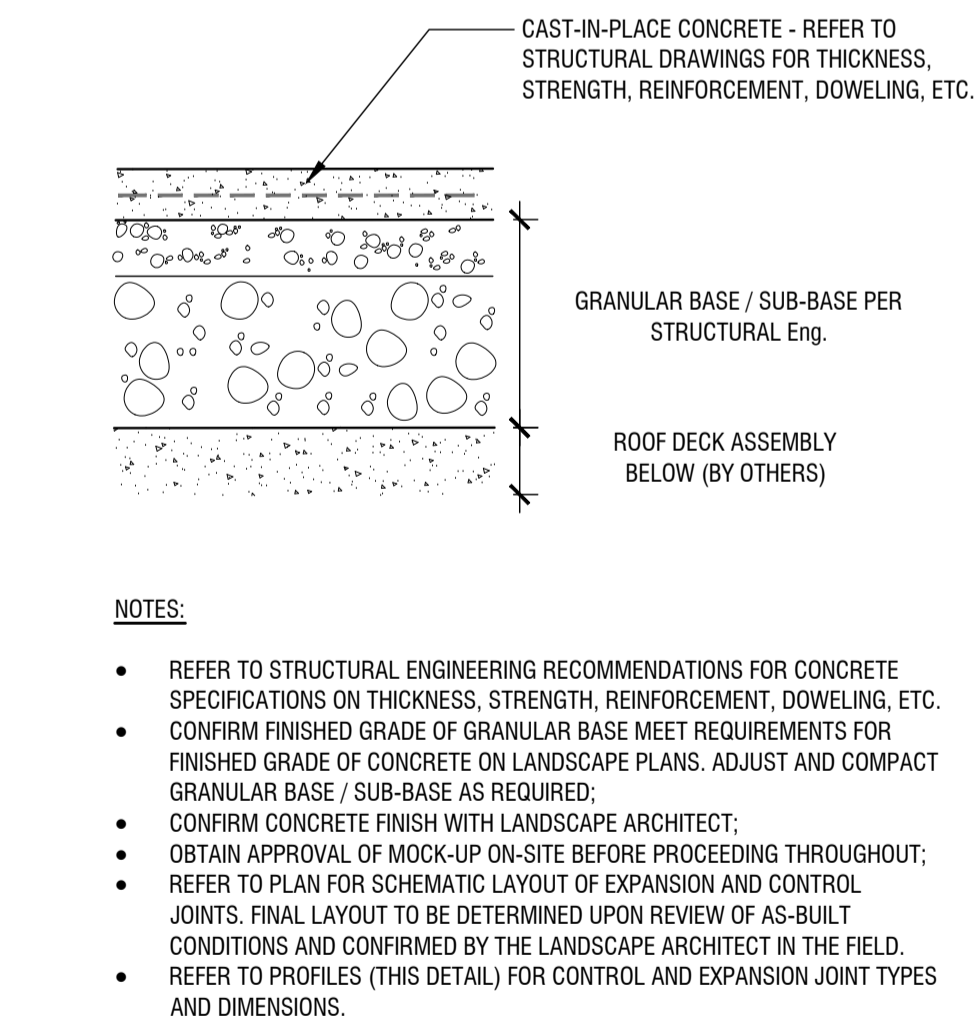
**1**  
**L3** CITY OF OTTAWA STANDARD DETAIL  
**HEAVY DUTY ASPHALT PAVING**  
n.t.s.



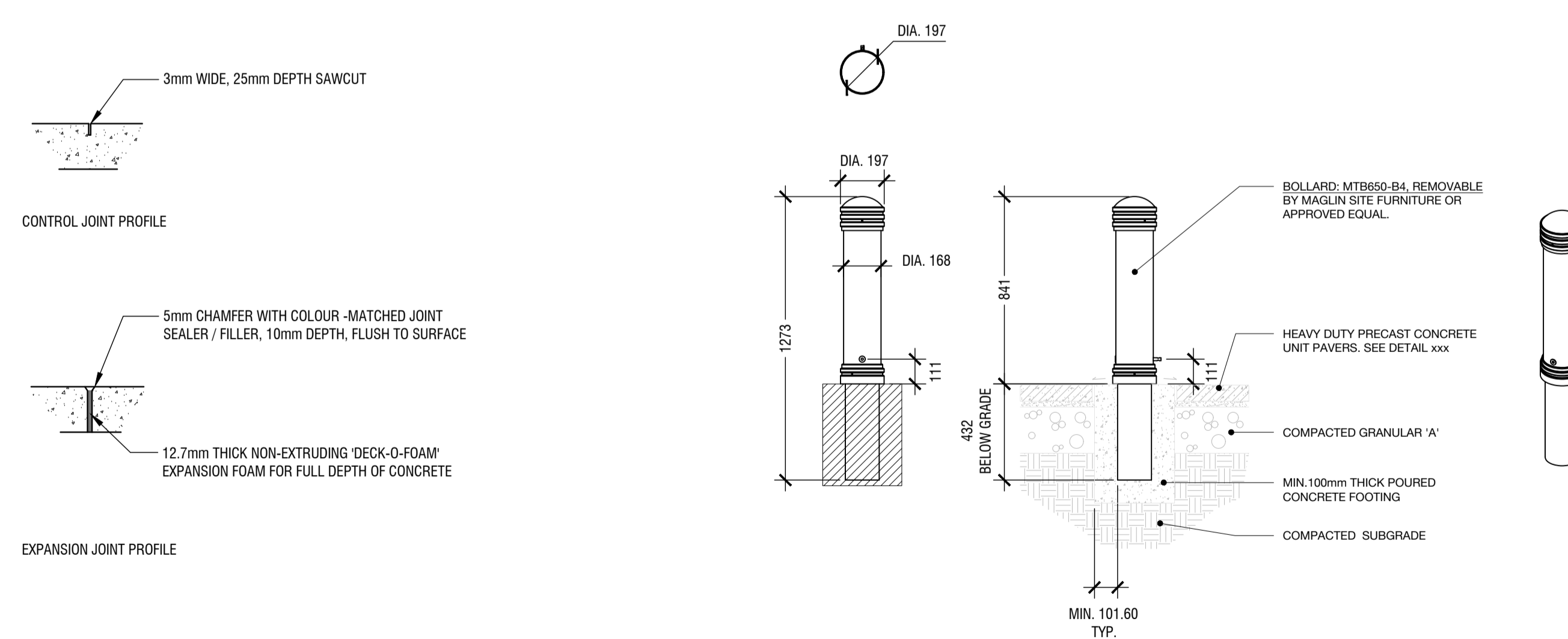
**2**  
**L3** CITY OF OTTAWA STANDARD DETAIL  
**ASPHALT PAVING**  
n.t.s.



**3**  
**L3** CITY OF OTTAWA STANDARD DETAIL  
**CONCRETE SLAB**  
n.t.s.



**4**  
**L3** HEAVY DUTY CONCRETE & JOINTING DETAIL  
n.t.s.

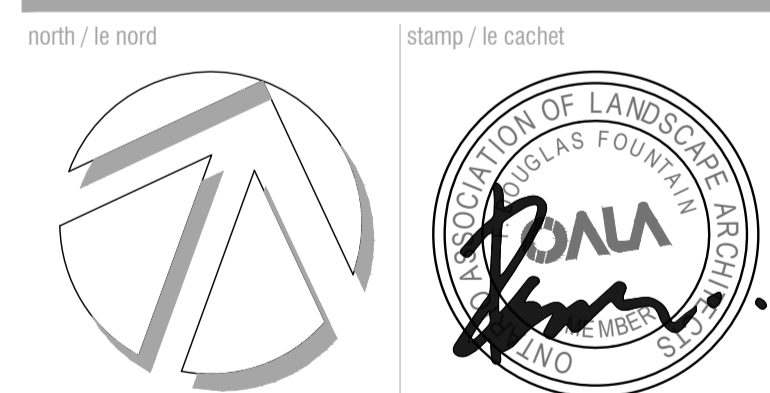


**5**  
**L3** REMOVABLE BOLLARD  
n.t.s.

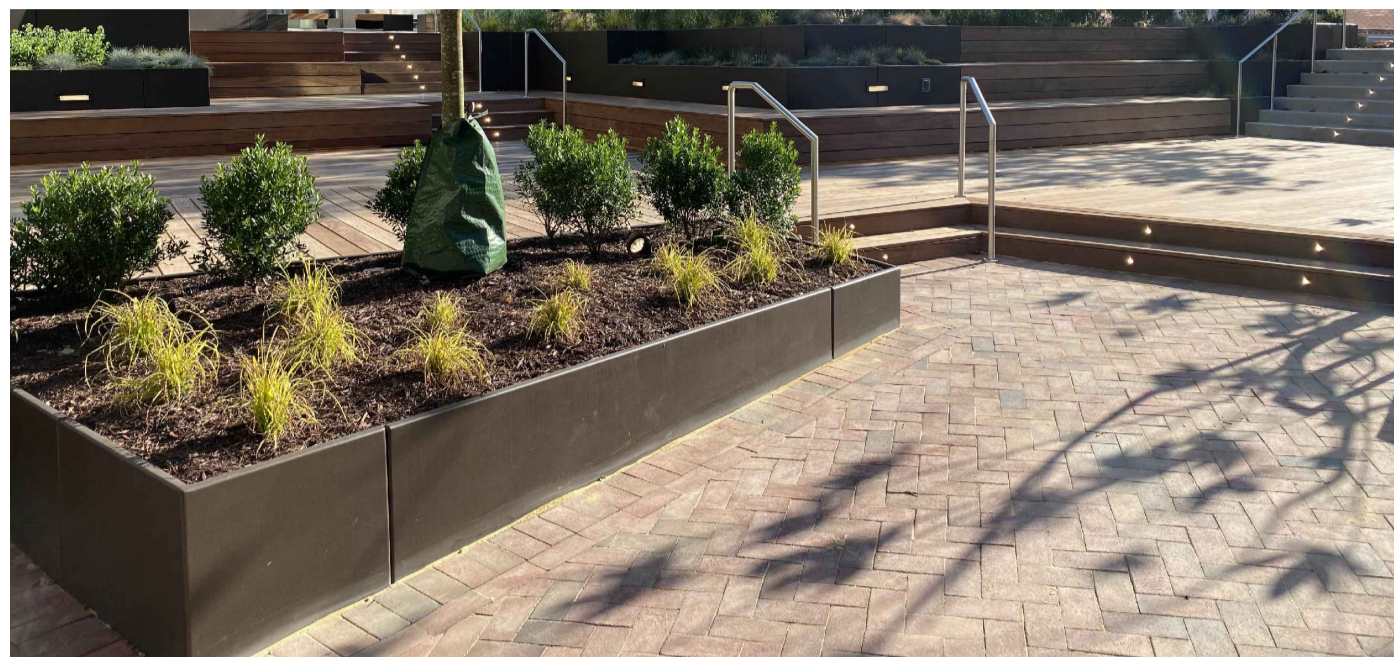


**NOT FOR CONSTRUCTION**

rev'n	description / la description	yyyy/mm/dd
09	re-issued for SPA	2023/11/13
08	re-issued for SPA	2023/10/31
07	re-issued for SPA	2023/01/06
06	re-issued for SPA	2022/10/07
05	re-issued for SPA	2022/03/30
04	issued for SPA	2021/11/19
03	issued for coordination	2021/11/10
02	issued for client review	2021/10/29
01	issued for coordination	2021/01/26
00	issued for ZBLA	2020/12/22



designed / conçu	drawn / dessiné	reviewed / examiné
ST / DF	ST / MB	DF
date	project number / No. du projet	
JAN 2023	007-12-21-0202 / #18357	



**1** **BOTTOMLESS RAISED PLANTER IN CORTEN FINISH**  
**L4** **n.t.s.**



**Equiparc**  
 1001 JAMES-BRODIE  
 ST-JEAN-SUR-RICHELIEU, QC J2X 0C1  
 TOLL FREE: 1-800-363-9264  
 PHONE: (450) 346-1882  
 FAX: (866) 346-2538  
 www.equiparc.com

**PLAN VIEW**  
58 1/2" (1488mm) x 23" (585mm)

**FRONT ELEVATION**  
EP 1990-1991

**SIDE ELEVATION**

**PLAN VIEW**  
118" (3000mm) x 22 3/4" (577mm)

**FRONT ELEVATION**  
EP 1990-DOUBLE

**SIDE ELEVATION**

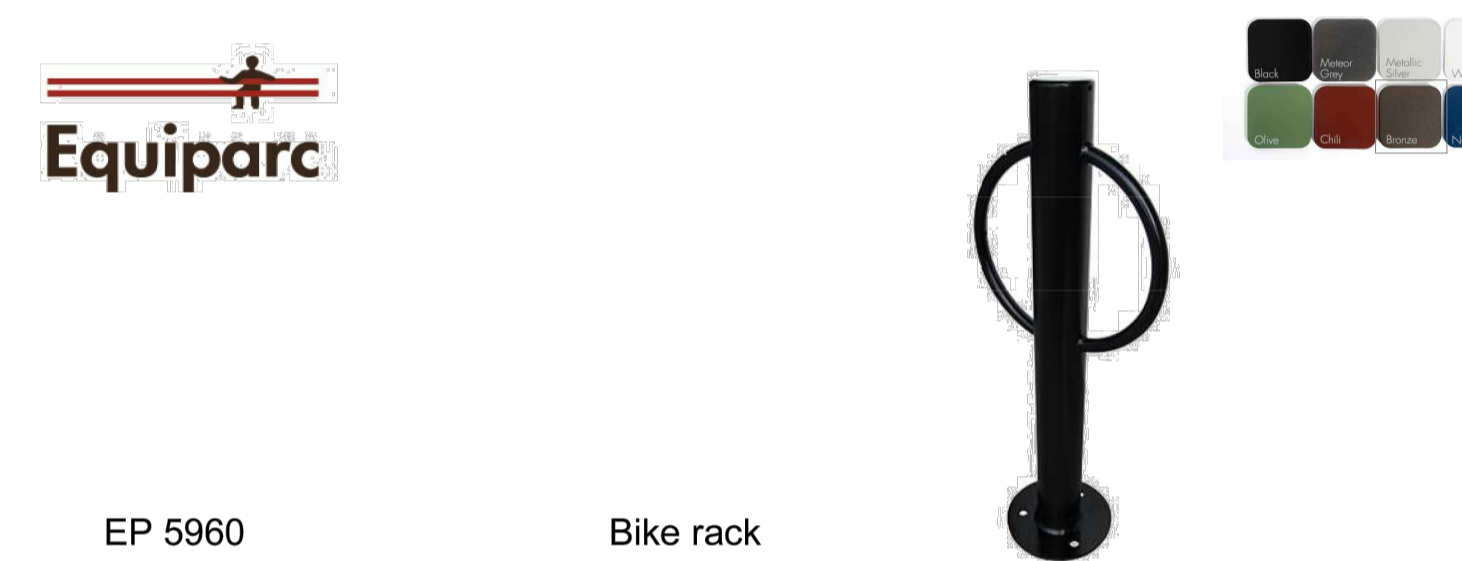
**NOTES:**  
 1. INSTALLATION TO BE COMPLETED IN ACCORDANCE WITH MANUFACTURER'S SPECIFICATIONS.  
 2. ALL DIMENSIONS ARE CONSIDERED TRUE AND REFLECT MANUFACTURER'S SPECIFICATIONS.  
 3. DO NOT SCALE DRAWING.  
 4. CONTRACTOR'S NOTE: FOR PRODUCT AND COMPANY INFORMATION VISIT [www.CADdetails.com/info](http://www.CADdetails.com/info)  
 REFERENCE NUMBER 2896-001.

**BENCHES**  
 EP 1990: BENCH WITH BACKREST- COLLECTION ESPLANADE

2896-001

REVISION DATE 19/02/2019

PROTECTED BY COPYRIGHT ©2019 CADDETAILS.COM LTD. CADdetails.com



**EP 5960** **Bike rack**

**SPECIFICATIONS**  
 Frame: Steel tubular  
 Finish: Hot-dipped galvanized

**AVAILABLE**  
 5960 2 bikes per rack

**OPTION**  
 GP Galvanized and painted frame

**Depth : 254mm (10") Length : 406mm (16") Height : 1016mm (40") Weight : 18 kg (40 lb)**

This bike rack must be anchored.  
 Our warranty applies when our product is properly installed and anchored.

**CONCRETE SLABS AND ANCHORS**  
 7005 1 slab 610mm X 610mm X 152mm (24" X 24" X 6")  
 7016 1 slab Ø 610mm X 203mm (24" X 8")  
 QS 3 stainless steel kwik bolts  
 QAV 3 drop-in anchors with stainless steel theft-proof bolts

Confidential information contained herein is the property of Equiparc. Intended use is limited to professionals specifying Equiparc's products and their direct clients. All information is not to be copied or disclosed to others without the written consent of Equiparc. All rights reserved - Equiparc Manufactureur d'Équipement de Parcs Inc.

DESIGN DURABILITY EXPERTISE 1001 James-Brodie Street, Saint-Jean-sur-Richelieu, Québec J2X-0C1 Canada Tel.: 450-346-1882 1 800 363-9264 info@equiparc.com | equiparc.com

**EP 3950-RU-DOUBLE** **Recycling unit**

**SPECIFICATIONS**  
 Frame: Steel sheets and flats  
 Finish: Zinc rich primer and polyester powder coated  
 Lid: Polyester powder coated aluminum lid  
 Slats: 51mm X 152mm (2" X 6")  
 Liners (2): Painted galvanized steel, 91 litres / 24 US gal  
 Fasteners: Stainless steel

**COVERINGS**  
 JAT Jatoba  
 IPE Ipe  
 HWA Select hardwood

**INCLUDING**  
 Recycling section: Lid with a permanent opening and descriptive logo  
 Waste section: Lid with a central leaf and descriptive logo

**OPTIONS**  
 ASH Painted aluminum ashtray  
 AT Painted 2 way aluminum top  
 DS Reflective strip

**Depth.: 558mm (22") Length.: 970mm (38 3/16") Height.: 930mm (36 5/8") Weight : 191 kg (420 lb)**

This waste receptacle must be anchored.  
 Our warranty applies when our product is properly assembled and anchored.

**CONCRETE SLABS AND ANCHORS**  
 7008 1 slab 610mm X 1219mm X 152mm (24" X 48" X 6")  
 QS 8 stainless steel kwik bolts  
 QAV 8 drop-in anchors with stainless steel theftproof bolts

**2** **COMBINED WASTE AND RECYCLING BIN**  
**L4** **n.t.s.**

**3** **BENCH**  
**L4** **n.t.s.**

**4** **BIKE RACK**  
**L4** **n.t.s.**

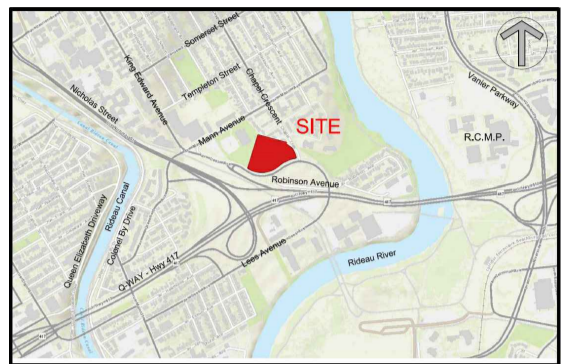
Copyright Reserved  
 The Copyrights to all designs and drawings are the property of Fotenn Consultants Inc. Unauthorized reproduction or use is forbidden. DO NOT SCALE DRAWING

Copyright réservés  
 Les droits d'auteur à tous les modèles et dessins sont la propriété de Fotenn Consultants Inc. Reproduction ou utilisation non autorisée est interdite. NE PAS L'ÉCHELLE DE DESSIN

Client / Client  
**2 ROBINSON PROPERTY LIMITED PARTNERSHIP**

D07-12-21-0202 #18357

key plan / plan repère

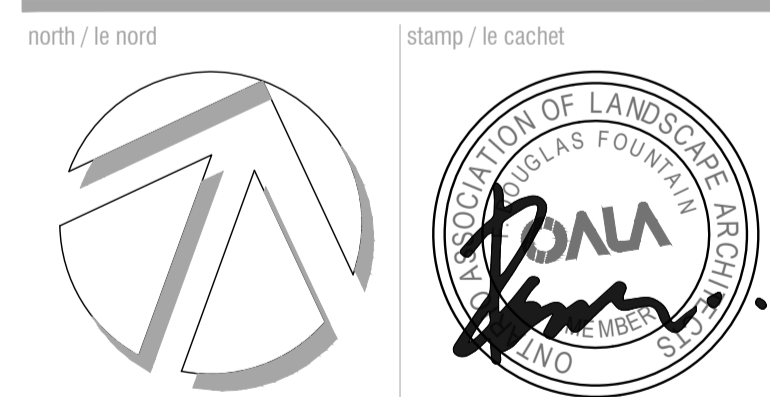


legend / légende

**NOT FOR CONSTRUCTION**

rev/n	description / la description	yyyy/mm/dd
09	re-issued for SPA	2023/11/13
08	re-issued for SPA	2023/10/31
07	re-issued for SPA	2023/01/06
06	re-issued for SPA	2022/10/07
05	re-issued for SPA	2022/03/30
04	issued for SPA	2021/11/19
03	issued for coordination	2021/11/10
02	issued for client review	2021/10/29
01	issued for coordination	2021/01/26
00	issued for ZBLA	2020/12/22

**FOTENN Planning + Design**  
 396 Cooper Street, Suite 300  
 Ottawa, ON, CANADA K2P 2H7  
 613.730.5709  
 fotenn.com



project / projet

**320 LEES AVENUE (2 ROBINSON)**

drawing / dessin

**CONSTRUCTION DETAILS**

designed / conçu	drawn / dessiné	reviewed / examiné
ST / DF	ST / MB	DF
date	project number / No. du projet	
JAN 2023	D07-12-21-0202 / #18357	

drawing number / No. du dessin

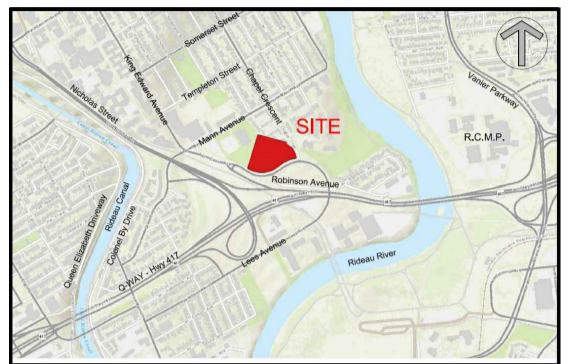
L4 of 5

Client / Client

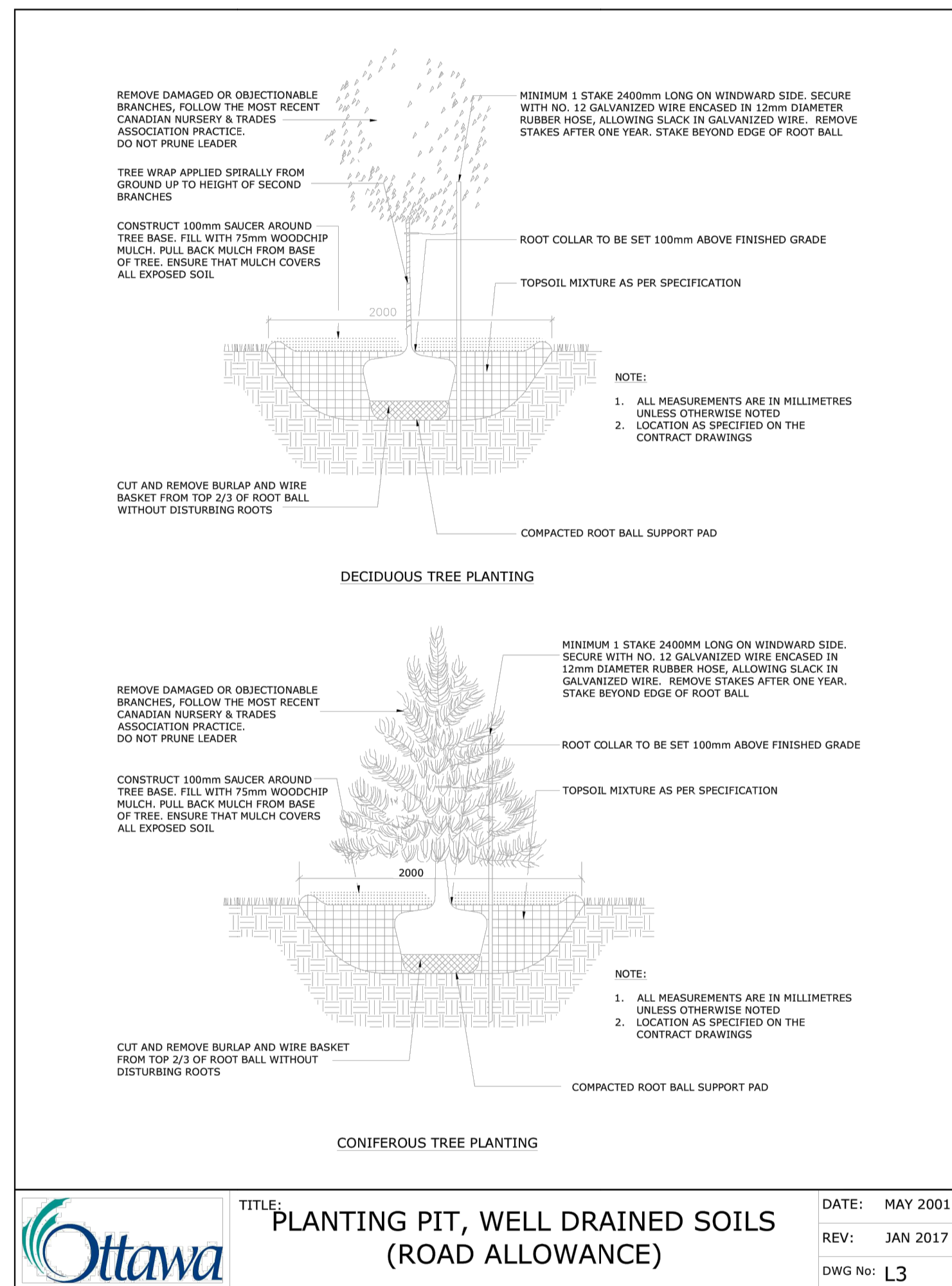
**2 ROBINSON PROPERTY LIMITED PARTNERSHIP**

D07-12-21-0202 #18357

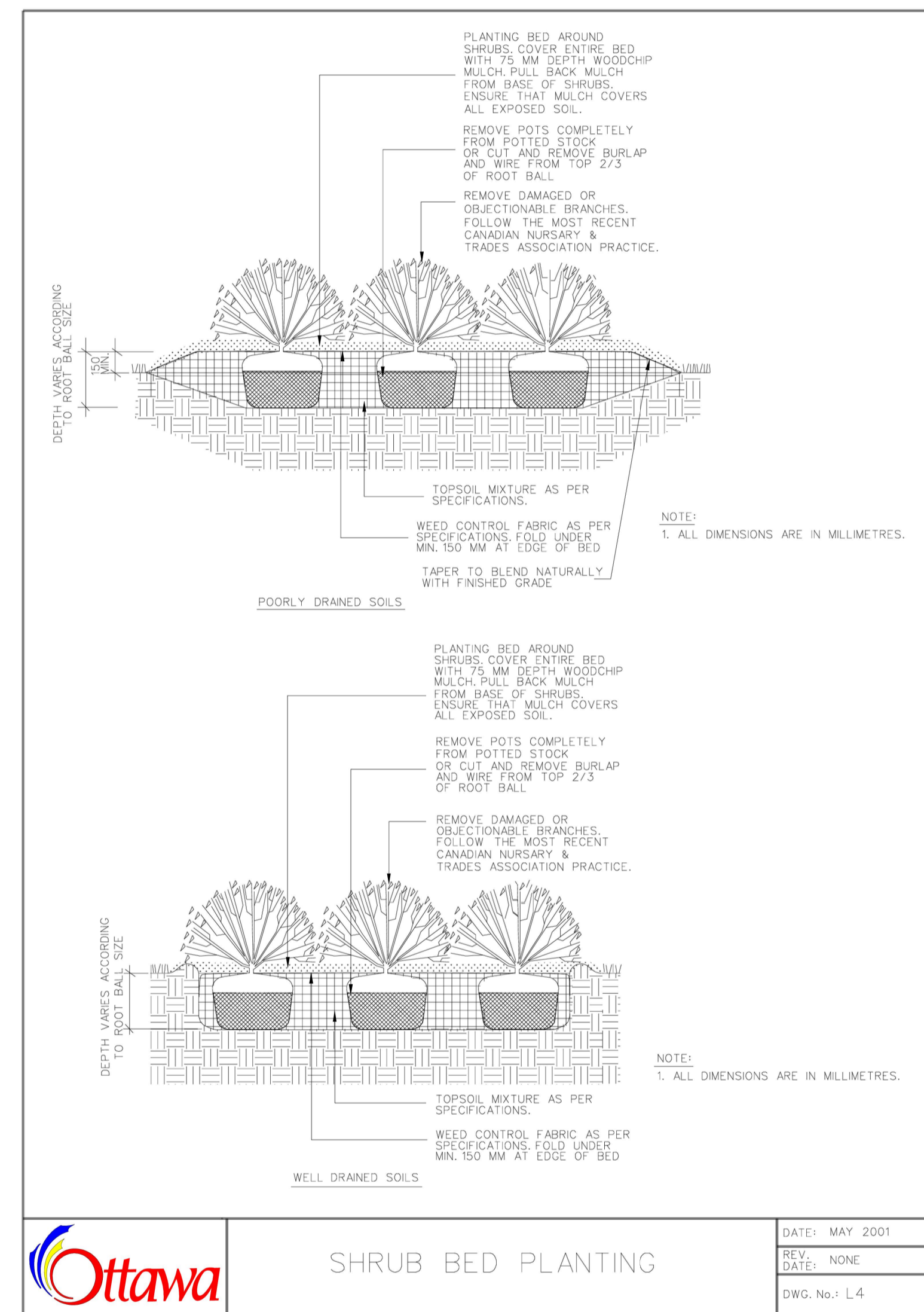
key plan / plan repère



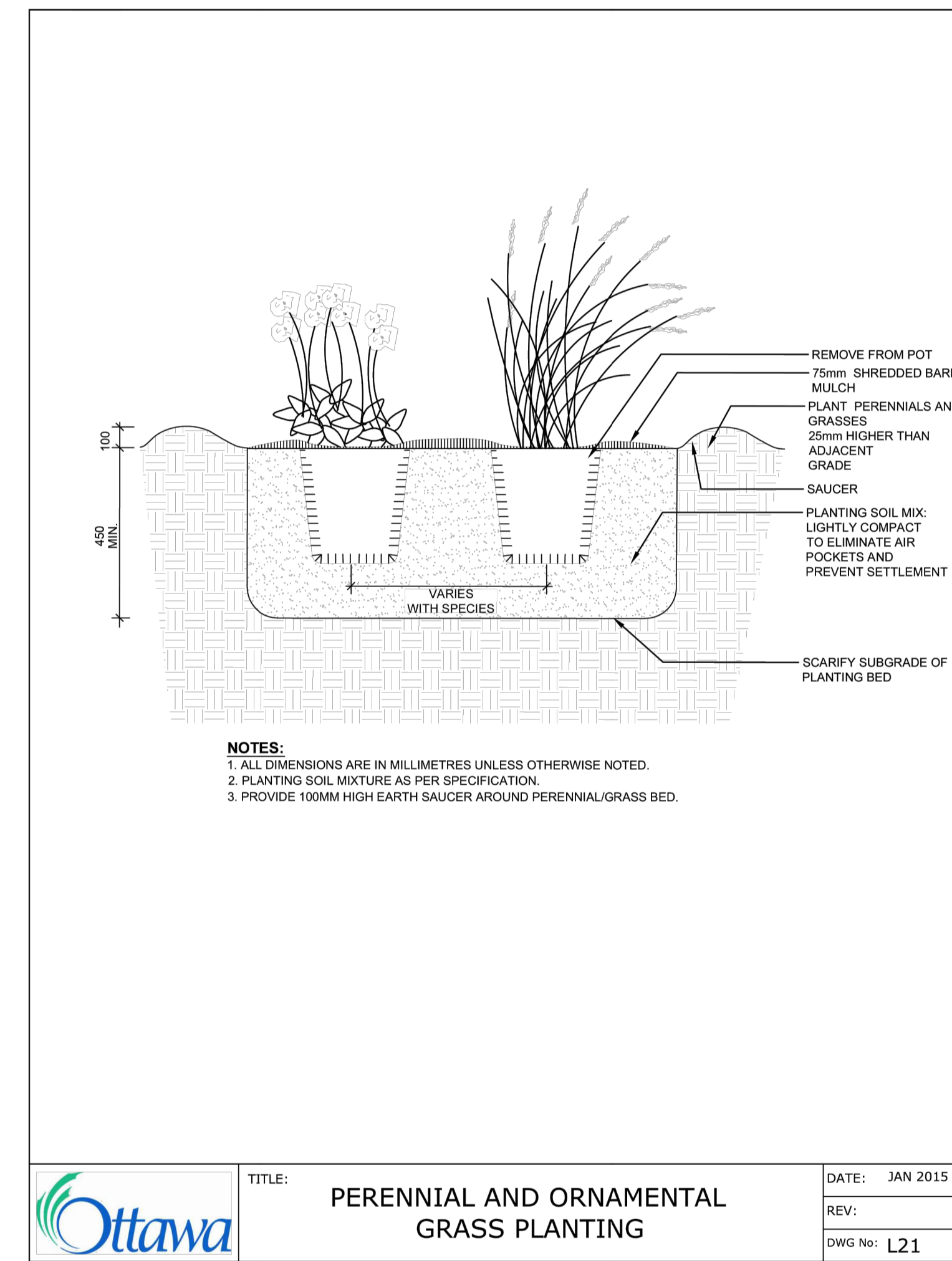
legend / légende



**1**  
**L5** CITY OF OTTAWA STANDARD DETAIL TREE PLANTING  
 n.t.s.



**2**  
**L5** CITY OF OTTAWA STANDARD DETAIL SHRUB PLANTING  
 n.t.s.

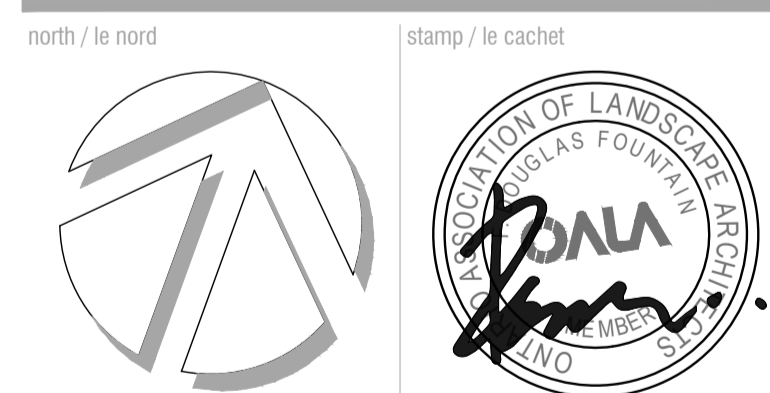


**3**  
**L5** CITY OF OTTAWA STANDARD DETAIL PERENNIAL AND GRASS PLANTING  
 n.t.s.

**NOT FOR CONSTRUCTION**

rev'n	description / la description	yyyy/mm/dd
09	re-issued for SPA	2023/11/13
08	re-issued for SPA	2023/10/31
07	re-issued for SPA	2023/01/06
06	re-issued for SPA	2022/10/07
05	re-issued for SPA	2022/03/30
04	issued for SPA	2021/11/19
03	issued for coordination	2021/11/10
02	issued for client review	2021/10/29
01	issued for coordination	2021/01/26
00	issued for ZBLA	2020/12/22

**FOTENN Planning + Design**  
 396 Cooper Street, Suite 300  
 Ottawa, ON, CANADA K2P 2H7  
 613.730.5709  
 fotenn.com



project / projet  
**320 LEES AVENUE (2 ROBINSON)**

drawing / dessin  
**CONSTRUCTION DETAILS**

designed / conçu	drawn / dessiné	reviewed / examiné
ST / DF	ST / MB	DF
date	project number / No. du projet	
JAN 2023	D07-12-21-0202 / #18357	