

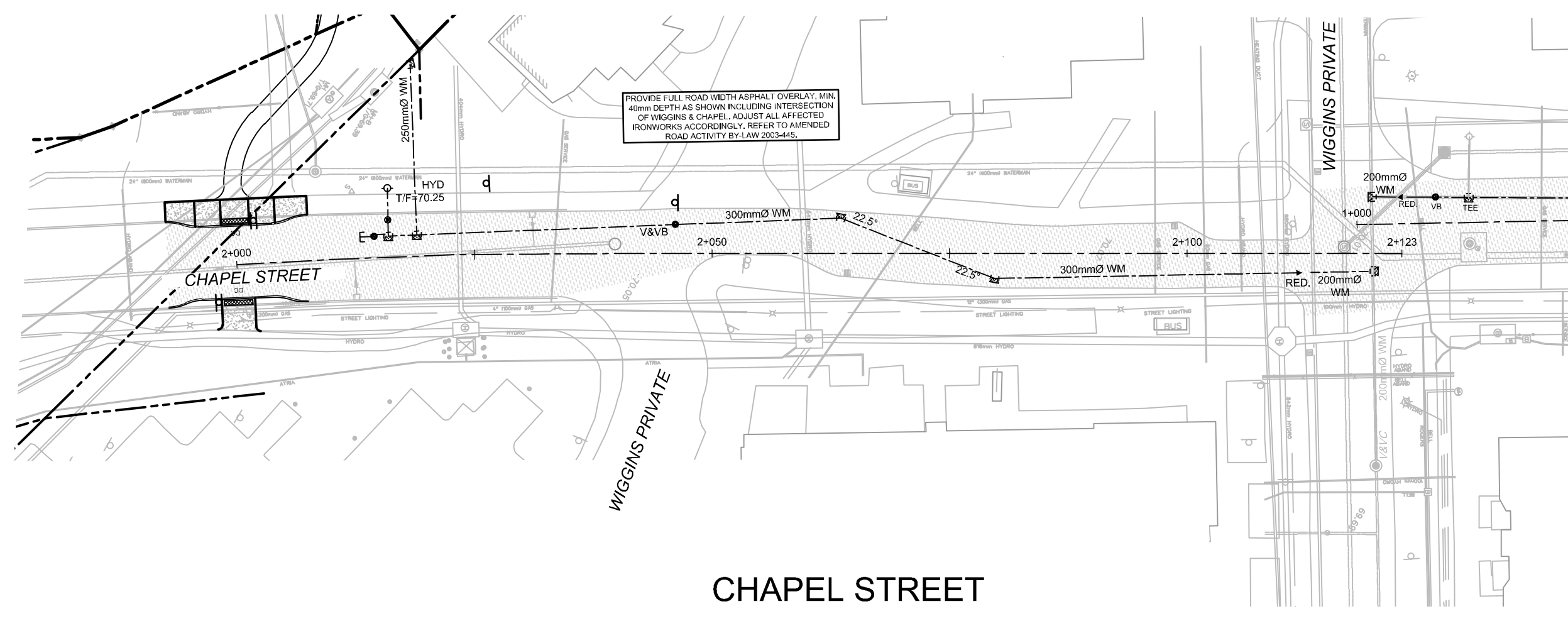
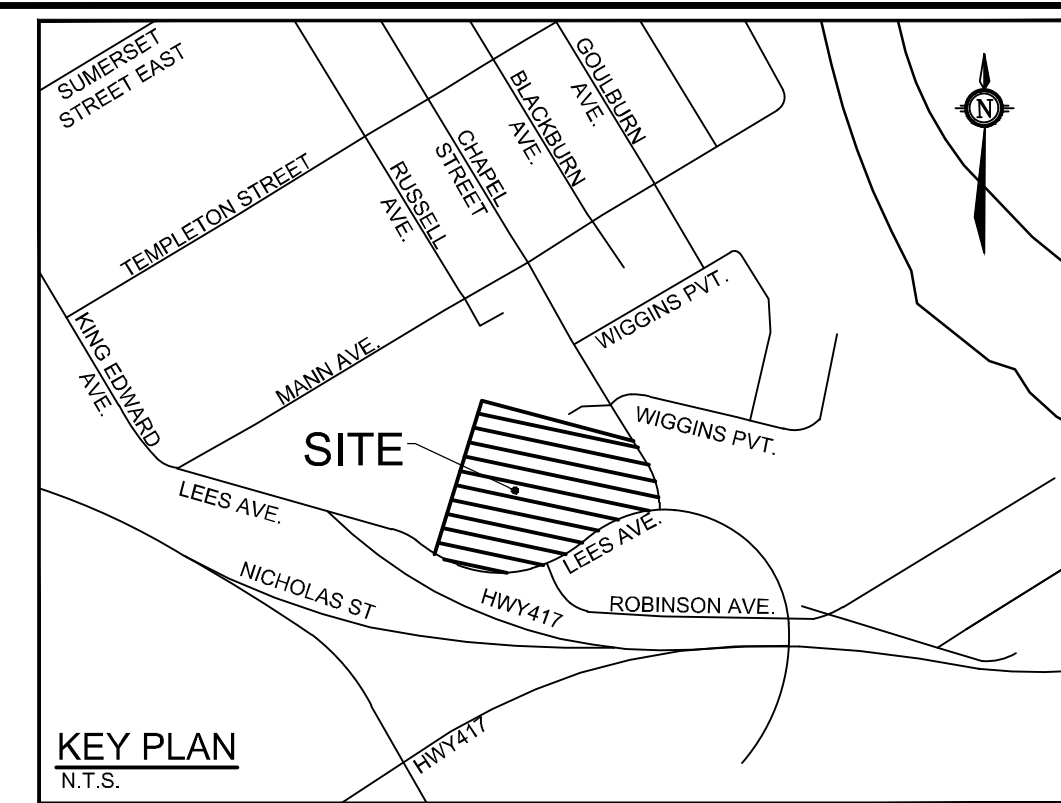
BENCHMARK INFO:

CITY OF OTTAWA MONUMENT No. 2011-0127 LOCATED NEAR THE SOUTH-WEST CORNER OF THE INTERSECTION OF LEES AVENUE AND ROBINSON AVENUE. GEODETIC ELEVATION = 63.60m.

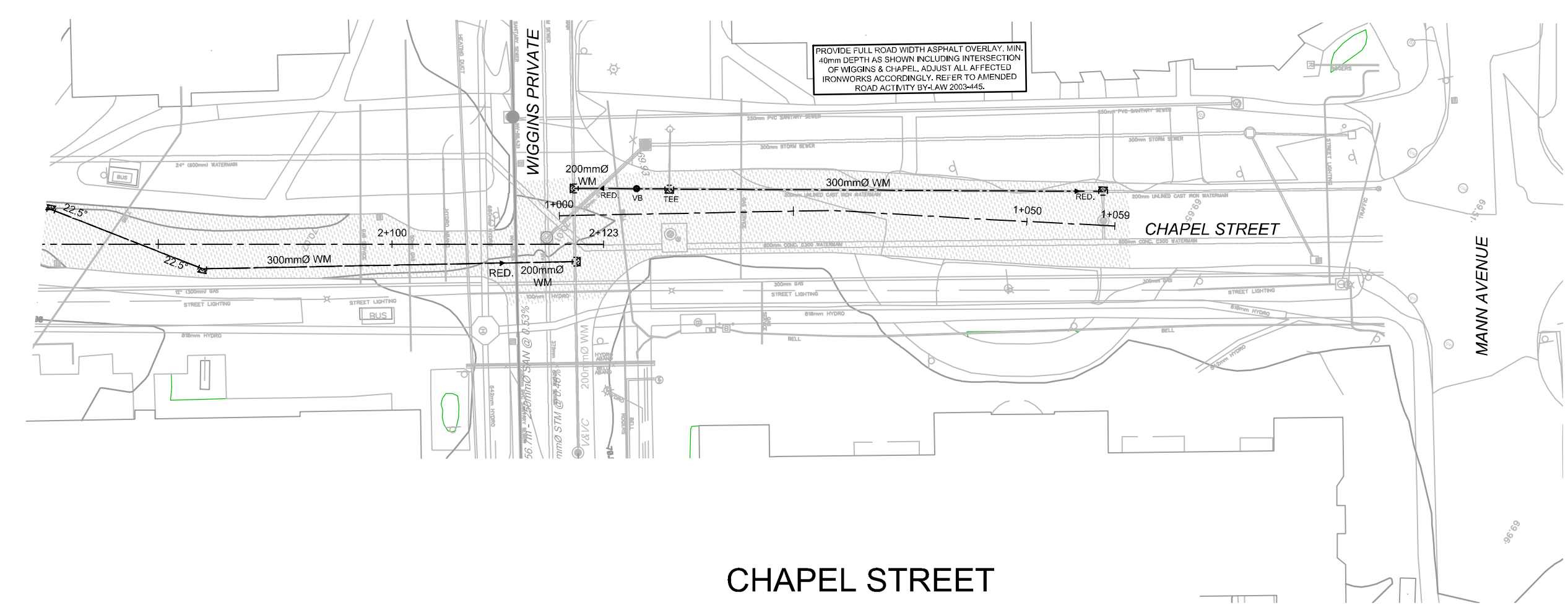
ALL ELEVATIONS ARE REFERRED TO THE CGVD28 GEODETIC DATUM, DERIVED FROM VERTICAL CONTROL MONUMENT NO. 3603 HAVING AN ELEVATION OF 76.959 METRES. BEARINGS ARE GRID, DERIVED FROM THE NORTHERLY LIMIT OF PART 1 ON PLAN 4R-1381 AND ARE REFERRED TO THE CENTRAL MERIDIAN OF MTM ZONE 9 (76°30' WEST LONGITUDE) NAD-83 (ORIGINAL).

THE EXISTING GRADES SHOWN ON THE PLANS ARE TAKEN DIRECTLY FROM TOPOGRAPHICAL SURVEY PLAN (Ref. # 21029-20 JRE L17 PL 49 F), PREPARED BY ANNIS, O'SULLIVAN, VOLLEBERG SIGNED AND DATED AUGUST 14, 2020.

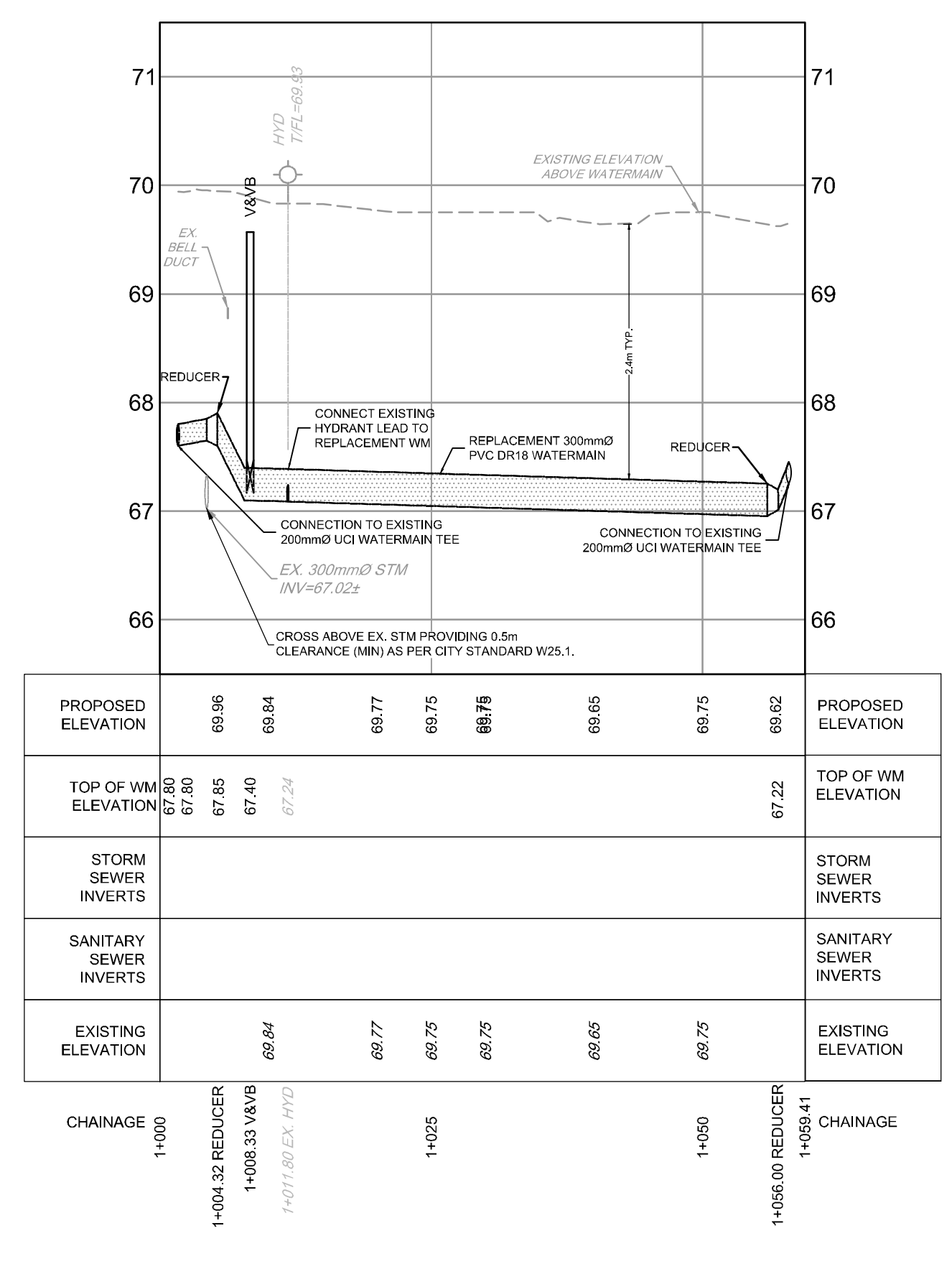
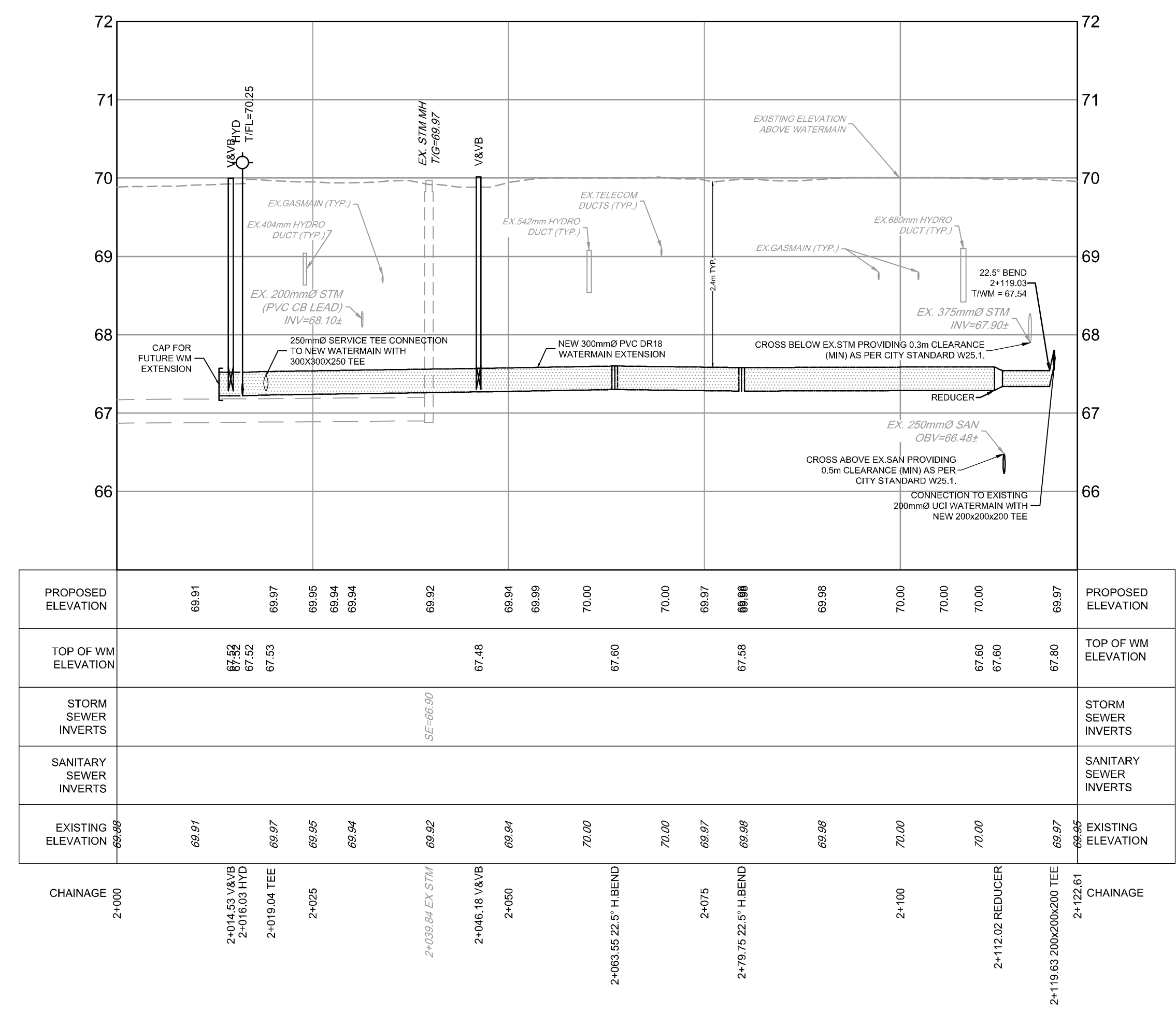
SURROUNDING BACKGROUND TOPO INFORMATION BEYOND THE LIMITS OF THE SITE SURVEY ARE SHOWN FROM CITY OF OTTAWA 1:1000 MAPPING FOR CONTEXT ONLY.



CHAPEL STREET



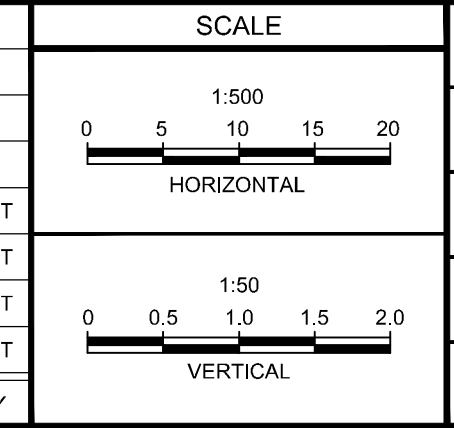
CHAPEL STREET



REFER TO 119171-NDT FOR ADDITIONAL NOTES

NOTE: THE POSITION OF ALL POLE LINES, CONDUITS, WATERMANS, SEWERS AND OTHER UNDERGROUND AND OVERGROUND UTILITIES AND STRUCTURES IS NOT NECESSARILY SHOWN ON THE CONTRACT DRAWINGS, AND WHERE SHOWN, THE ACCURACY OF THE POSITION OF SUCH UTILITIES AND STRUCTURES IS NOT GUARANTEED. BEFORE STARTING WORK, DETERMINE THE EXACT LOCATION OF ALL SUCH UTILITIES AND STRUCTURES AND ASSUME ALL LIABILITY FOR DAMAGE TO THEM.

No.	REVISION	DATE	BY
4	REVISED SIDEWALK/CYCLE TRACK ALONG LEES AVE.	NOV 3/23	FST
3	RE-ISSUED FOR SITE PLAN APPROVAL	OCT 07/22	FST
2	REVISED PER CITY COMMENTS	MAR 30/21	FST
1	ISSUED FOR SITE PLAN APPROVAL	NOV 15/21	FST



FOR REVIEW ONLY	DESIGN	DWM
CHECKED	DWM	FST
DRAWN	DWM	FST
CHECKED	FST	FST
APPROVED	FST	FST

LOCATION: OTTAWA, ONTARIO
2 ROBINSON AVE.

DRAWING NAME: PLAN AND PROFILE
CHAPEL AVENUE, STATION 1+000 TO 1+060
CHAPEL AVENUE, STATION 2+000 TO 2+123

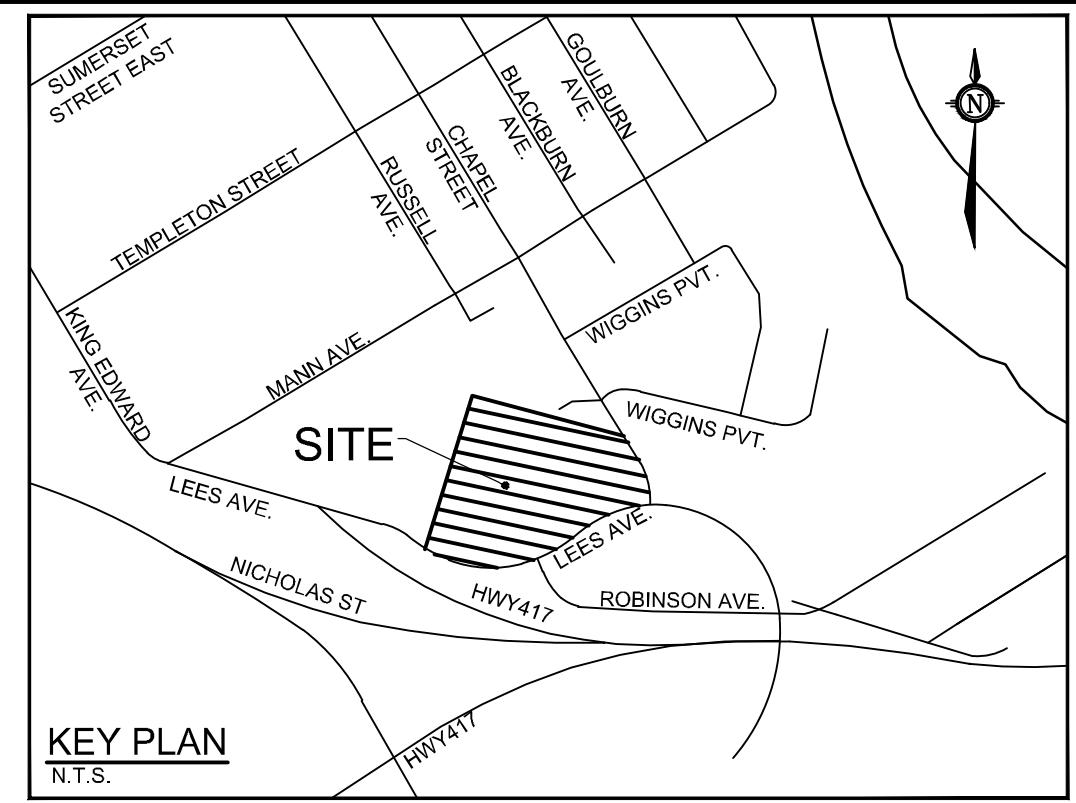
PROJECT No.: 119171
REV # 4
DRAWING No.: 119171-PR1

NOVATECH
Engineers, Planners & Landscape Architects
Suite 200, 240 Michael Cowland Drive
Ottawa, Ontario, Canada K2M 1P6
Telephone: (613) 254-9643
Facsimile: (613) 254-5867
Website: www.novatech-eng.com

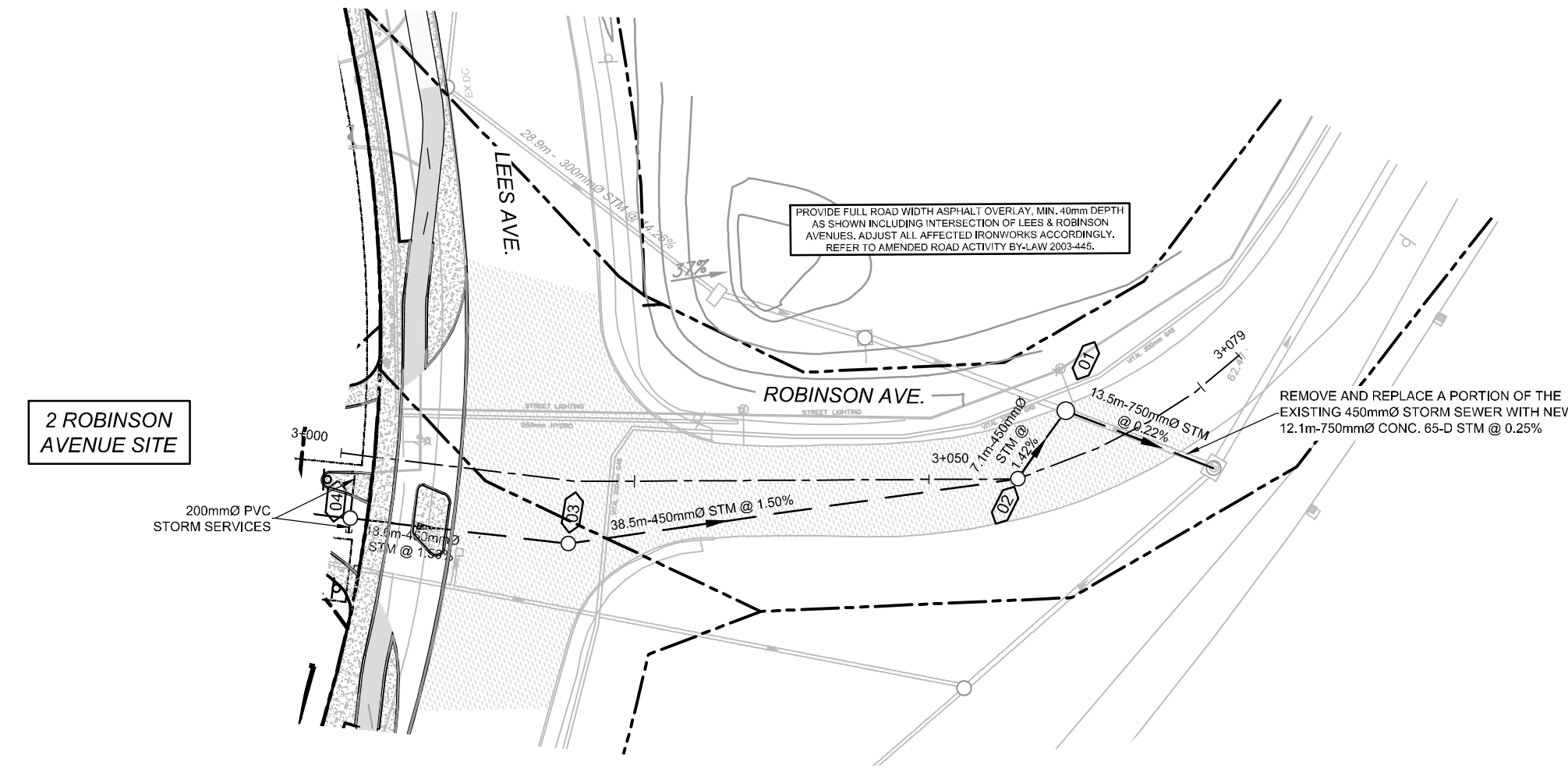
F.S. TRAUETTE
100041599
November 3, 2023
PROVINCE OF ONTARIO

C:\03\119171-NDT\Design\119171-PR1.dwg PRT: Nov 03, 2023 - 10:55am c:\user

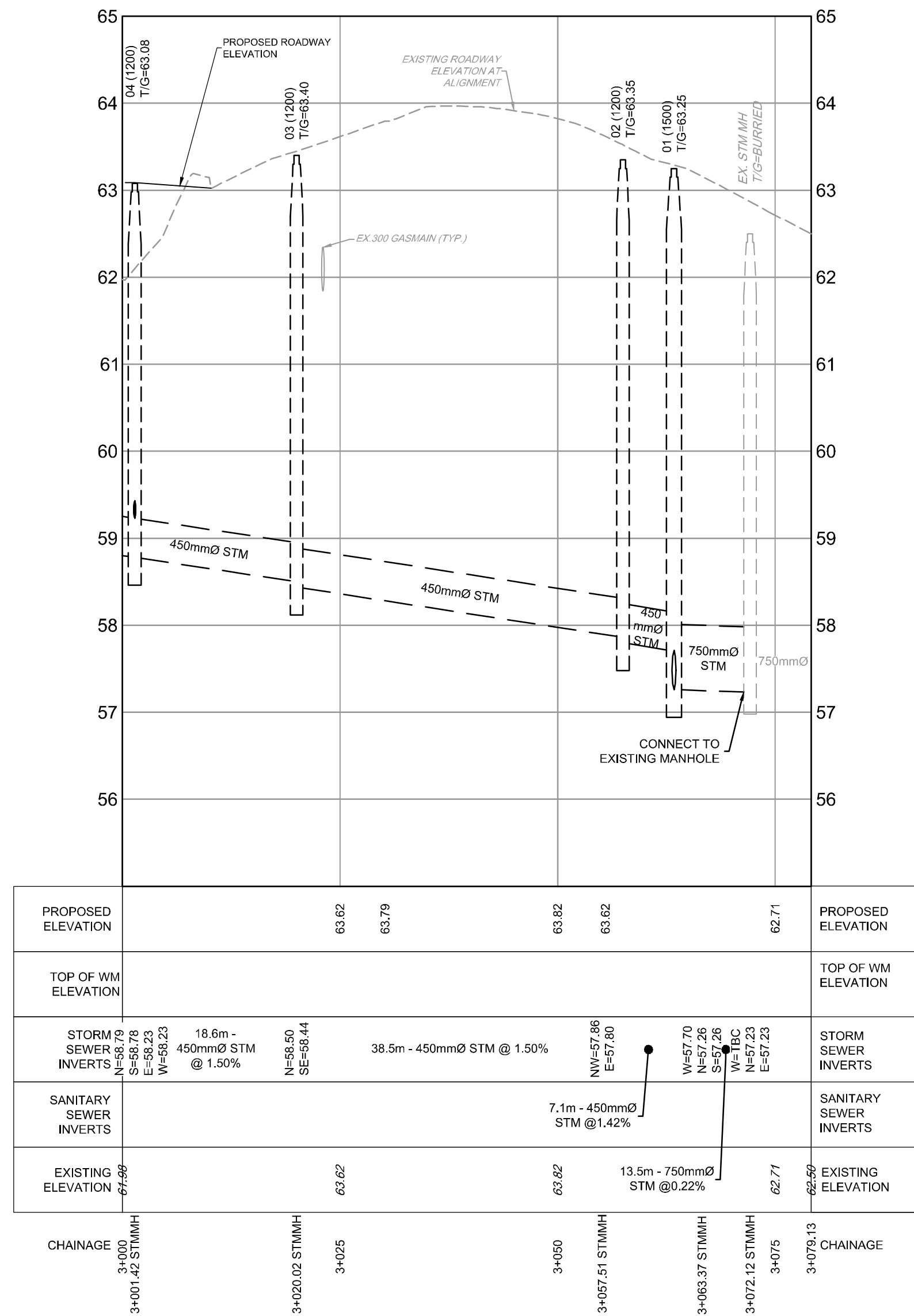
D07-12-21-0202 # 18357



BENCHMARK INFO:
 CITY OF OTTAWA MONUMENT No. 2011-0127 LOCATED NEAR THE SOUTH-WEST CORNER OF THE INTERSECTION OF LEES AVENUE AND ROBINSON AVENUE. GEODETIC ELEVATION = 63.60m.
 ALL ELEVATIONS ARE REFERRED TO THE COVID28 GEODETIC DATUM. DERIVED FROM VERTICAL CONTROL MONUMENT NO. 3603 HAVING AN ELEVATION OF 76.959 METRES. BEARINGS ARE GRID, DERIVED FROM THE NORTHERLY LIMIT OF PART 1 ON PLAN 4R-1381 AND ARE REFERRED TO THE CENTRAL MERIDIAN OF MTM ZONE 9 (76°30' WEST LONGITUDE) NAD-83 (ORIGINAL).
 THE EXISTING GRADES SHOWN ON THE PLANS ARE TAKEN DIRECTLY FROM TOPOGRAPHICAL SURVEY PLAN (Ref. # 21028-20 JRE L17 PL 49 T F), PREPARED BY ANNIS O'SULLIVAN, VOLLEBECK SIGNED AND DATED AUGUST 14, 2020.
 SURROUNDING BACKGROUND TOPO INFORMATION BEYOND THE LIMITS OF THE SITE SURVEY ARE SHOWN FROM CITY OF OTTAWA 1:1000 MAPPING FOR CONTEXT ONLY.

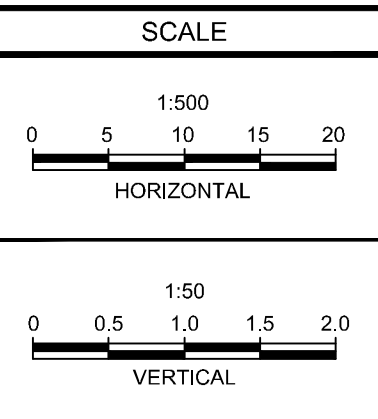


ROBINSON AVENUE



NOTE:
 THE POSITION OF ALL POLE LINES, CONDUITS, WATERMANS, SEWERS AND OTHER UNDERGROUND AND OVERGROUND UTILITIES AND STRUCTURES IS NOT NECESSARILY SHOWN ON THE CONTRACT DRAWINGS, AND WHERE SHOWN, THE ACCURACY OF THE POSITION OF SUCH UTILITIES AND STRUCTURES IS NOT GUARANTEED. BEFORE STARTING WORK, DETERMINE THE EXACT LOCATION OF ALL SUCH UTILITIES AND STRUCTURES AND ASSUME ALL LIABILITY FOR DAMAGE TO THEM.

No.	REVISION	DATE	BY
4	REVISED SIDEWALK/CYCLE TRACK ALONG LEES AVE.	NOV 3/23	FST
3	RE-ISSUED FOR SITE PLAN APPROVAL	OCT 07/22	FST
2	REVISED PER CITY COMMENTS	MAR 30/21	FST
1	ISSUED FOR SITE PLAN APPROVAL	NOV 15/21	FST



DESIGN: DWM
 CHECKED: FST
 DRAWN: DWM
 CHECKED: FST
 APPROVED: FST

FOR REVIEW ONLY



NOVATECH
 Engineers, Planners & Landscape Architects
 Suite 200, 240 Michael Cowpland Drive
 Ottawa, Ontario, Canada K2M 1P6
 Telephone: (613) 254-9643
 Facsimile: (613) 254-5867
 Website: www.novatech-eng.com

REFER TO 119171-NDT FOR ADDITIONAL NOTES

LOCATION
 OTTAWA, ONTARIO
 2 ROBINSON AVE.

DRAWING NAME
PLAN AND PROFILE
 ROBINSON AVENUE
 STATION 3+000 TO 3+079

PROJECT No.: 119171
 REV # 4
 DRAWING No.: 119171-PR2

C:\Users\119171\OneDrive\119171-PR2.dwg P252 Nov 03, 2023 2:26pm cadswr

D07-12-21-0202 # 18357