
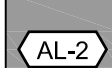
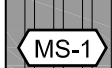


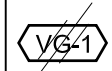


EXTERIOR MATERIALS LIST

-  **AL-1** ALUMINUM COMPOSITE PANEL - ACCENT  
COLOUR: TBD
-  **AL-2** ALUMINUM COMPOSITE PANEL - FIELD  
COLOUR: MATCH MS-1
-  **MS-1** METAL SIDING - ACCENT  
AGWAY 6-150 NF - 38mm STEEL SIDING  
COLOUR: DEEP GREY
-  **MS-2** METAL SIDING - FIELD  
AGWAY 6-150 NF - 38mm STEEL SIDING  
COLOUR: SILVER
-  **PC** PRECAST CONCRETE BASE  
100mm THICK PRECAST CONCRETE SLAB  
FIELD-STAINED TO MATCH MS-1
-  **VG-1** VISION GLAZING  
DOUBLE SEALED PPG SOLARBAN 80 WITH LOW E  
COATING, ARGON GAS AND WARM EDGE SPACER

North

Revisions

No.	By	Description	Date
01	ERM	ISSUED FOR SITE PLAN APPLICATION	2023-05-19

Project

**THUNDER ROAD INDUSTRIAL PARK**

6160 THUNDER ROAD, OTTAWA

Drawing  
**EXTERIOR ELEVATIONS & ELEVATION DETAILS BUILDING A**

Scale AS NOTED

Drawn ERM

Checked JAS

Stamp

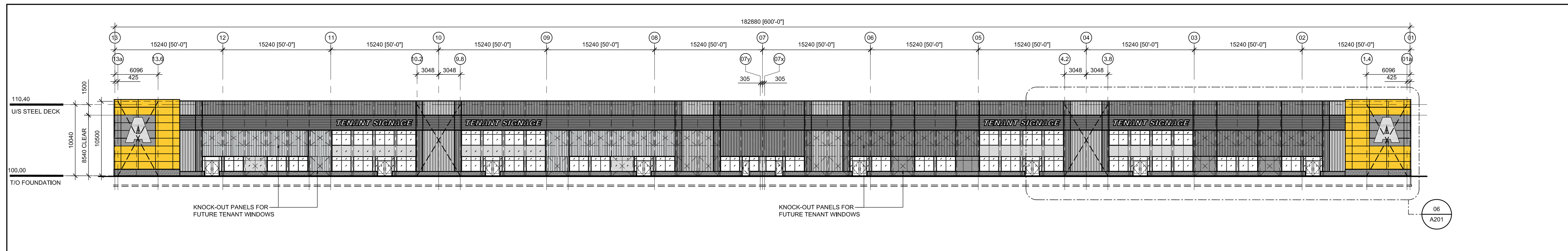


Project No. 21-135

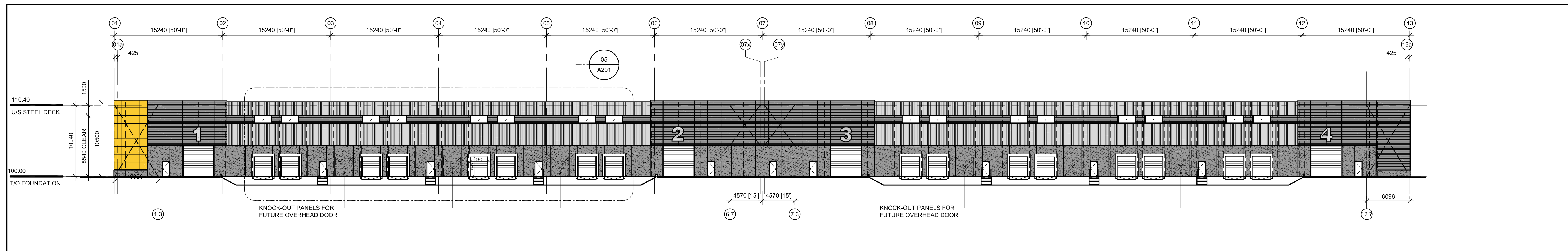
Date JULY 2021

Drawing No.

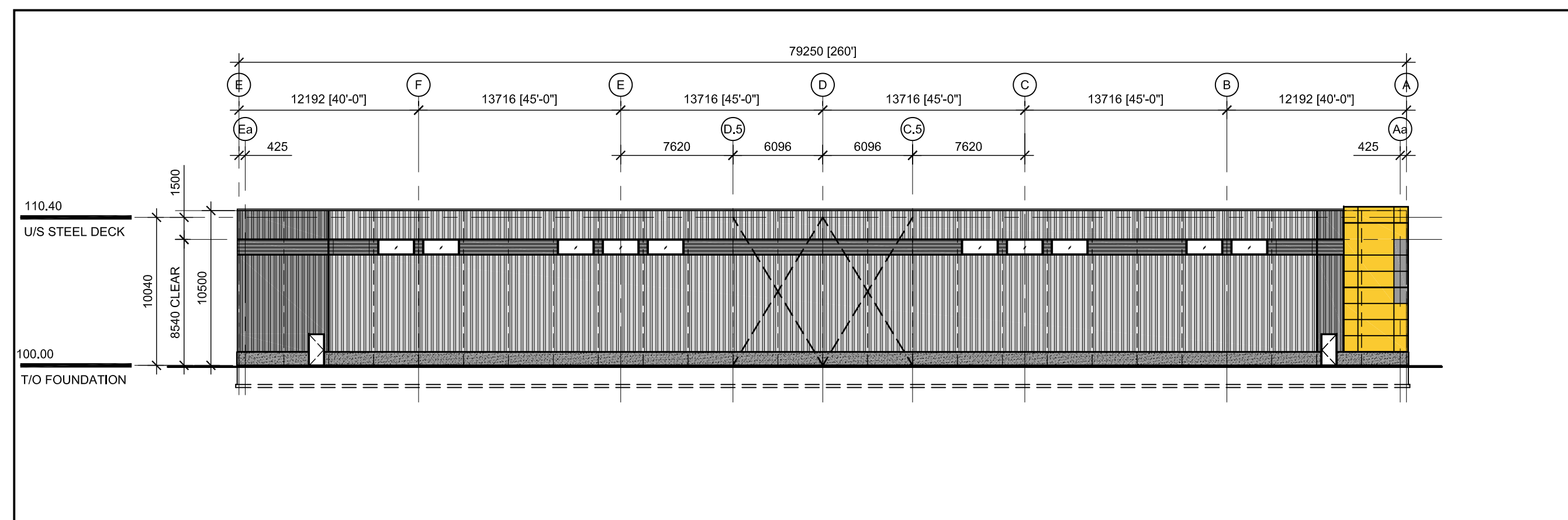
**A201**



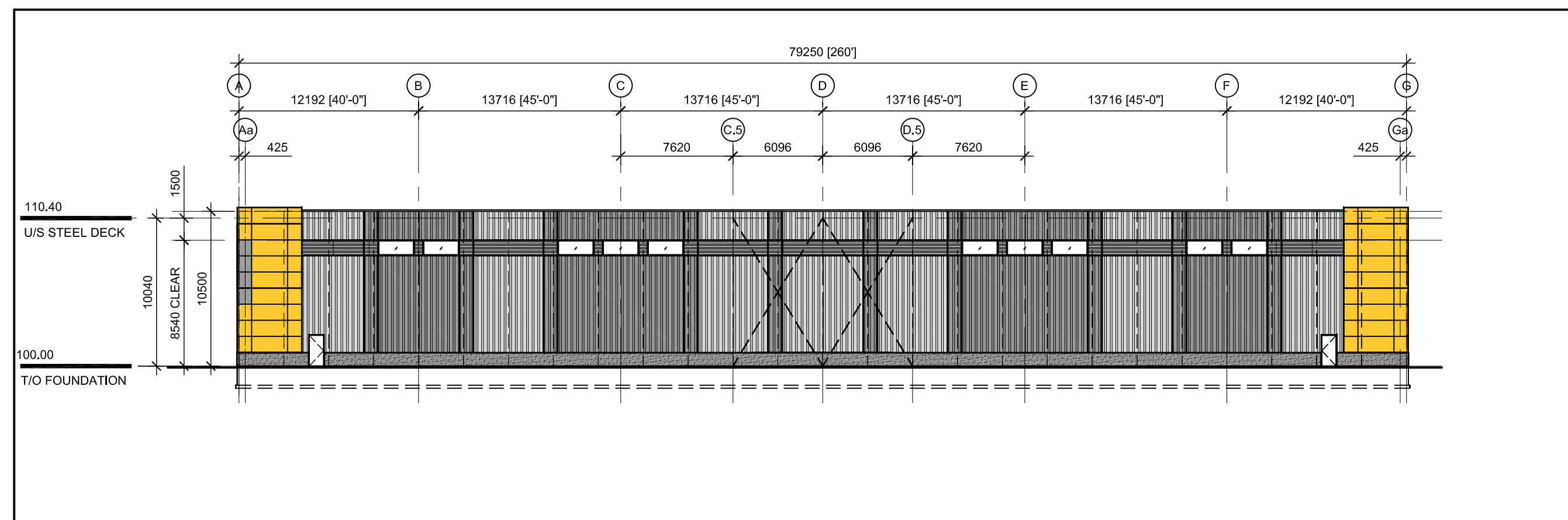
**01 EAST ELEVATION**  
A201 SCALE: 1:300



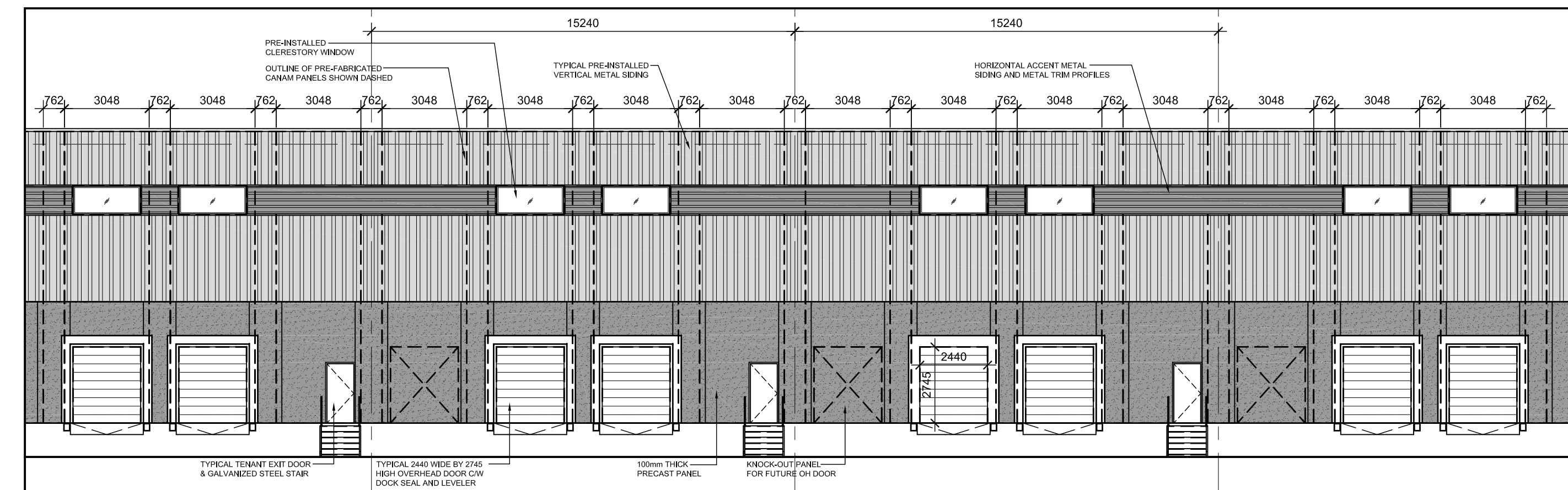
**02 WEST ELEVATION**  
A201 SCALE: 1:300



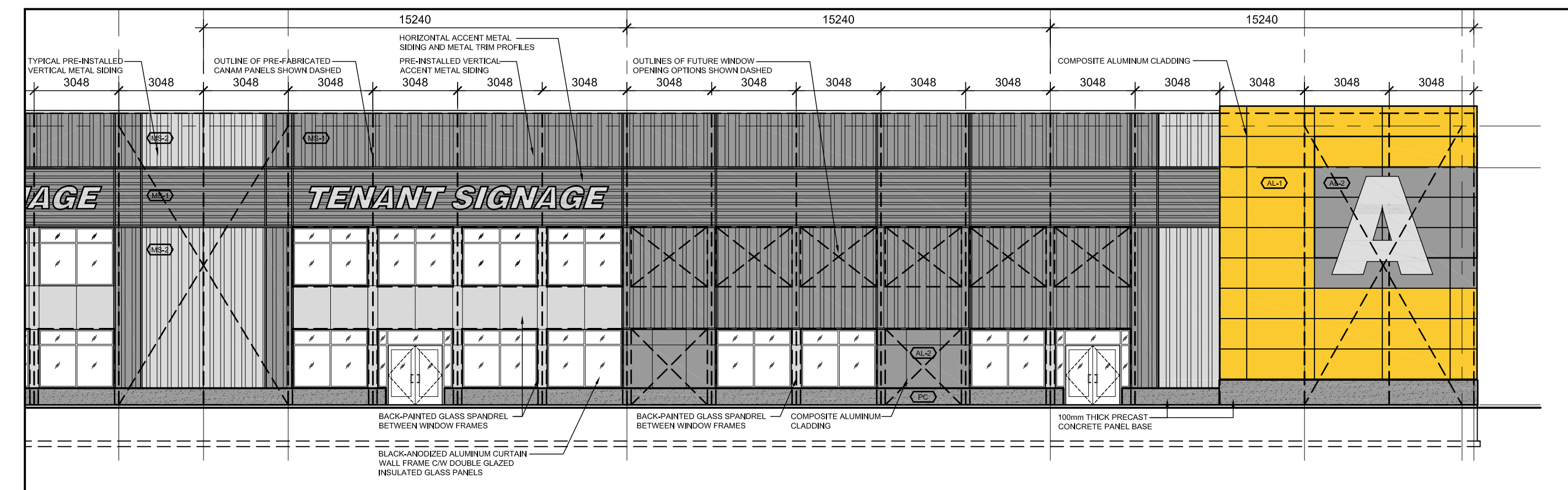
**03 SOUTH ELEVATION**  
A201 SCALE: 1:300



**04 NORTH ELEVATION**  
A201 SCALE: 1:300



**05 TYPICAL LOADING DOCK ELEVATION**  
A201 SCALE: 1:150



**06 TYPICAL STOREFRONT ELEVATION**  
A201 SCALE: 1:150