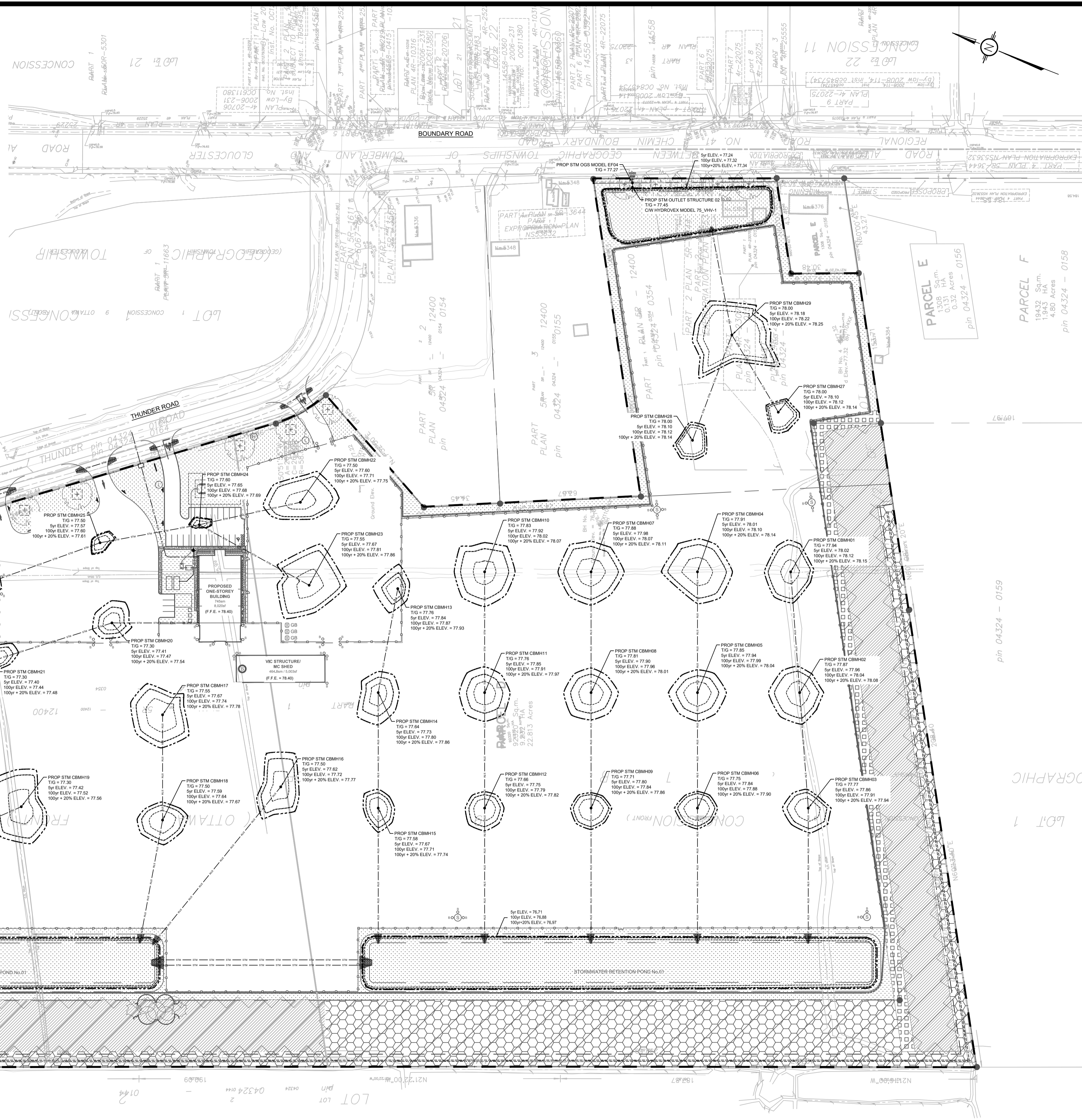


Structure	TG	5yr Elev.	Depth (m)	Volume (m3)	100yr Elev.	Depth (m)	Volume (m3)	100yr+20% Elev.	Depth (m)	Volume (m3)
CBM#01	77.94	78.02	0.08	2	78.12	0.18	17	78.15	0.21	31
CBM#02	77.87	77.96	0.09	2	78.04	0.17	14	78.08	0.21	28
CBM#03	77.71	77.86	0.09	2	77.91	0.05	7	77.94	0.08	13
CBM#04	77.91	78.01	0.10	3	78.10	0.19	26	78.14	0.23	45
CBM#05	77.85	77.94	0.09	3	77.99	0.14	10	78.04	0.19	24
CBM#06	77.75	77.84	0.09	2	77.88	0.13	6	77.90	0.15	10
CBM#07	77.88	77.98	0.10	3	78.07	0.19	22	78.11	0.23	40
CBM#08	77.81	77.90	0.09	2	77.96	0.15	10	78.01	0.20	24
CBM#09	77.71	77.80	0.09	2	77.84	0.13	5	77.86	0.15	9
CBM#10	77.83	77.92	0.09	2	78.02	0.19	18	78.07	0.24	35
CBM#11	77.76	77.85	0.09	2	77.91	0.15	10	77.97	0.21	26
CBM#12	77.68	77.75	0.09	2	77.79	0.13	5	77.82	0.16	8
CBM#13	77.76	77.84	0.08	1	77.87	0.11	3	77.93	0.17	11
CBM#14	77.64	77.73	0.09	2	77.80	0.16	9	77.86	0.22	23
CBM#15	77.58	77.67	0.09	2	77.71	0.13	5	77.74	0.16	9
CBM#16	77.61	77.62	0.12	2	77.72	0.22	11	77.77	0.27	21
CBM#17	77.55	77.67	0.12	5	77.74	0.19	22	77.78	0.23	38
CBM#18	77.81	77.59	0.09	3	77.64	0.14	9	77.67	0.17	16
CBM#19	77.30	77.42	0.12	5	77.52	0.22	27	77.56	0.26	44
CBM#20	77.30	77.41	0.11	1	77.47	0.17	6	77.54	0.24	16
CBM#21	77.30	77.40	0.10	2	77.44	0.14	4	77.48	0.18	8
CBM#22	77.50	77.60	0.10	2	77.71	0.21	22	77.75	0.25	41
CBM#23	77.55	77.67	0.12	4	77.81	0.26	41	77.86	0.31	67
CBM#24	77.60	77.65	0.05	0	77.68	0.08	1	77.69	0.09	1
CBM#25	77.50	77.57	0.07	1	77.60	0.10	1	77.61	0.11	2
CBM#26	77.40	77.49	0.09	2	77.53	0.13	4	77.56	0.16	8
CBM#27	77.79	77.88	0.09	1	77.93	0.14	3	78.00	0.21	11
CBM#28	77.82	77.91	0.09	1	77.95	0.14	7	78.02	0.20	18
CBM#29	77.76	77.89	0.13	8	77.98	0.22	39	78.01	0.25	61
Pond No.01 (North)				1080	76.75		3953	76.87		4728
Pond No.01 (South)				2159	76.88		1957	76.97		2424
Pond No.02				350	77.02		677	77.12		843



USE AND INTERPRETATION OF DRAWINGS

GENERAL CONDITIONS OF THE CONTRACT FOR CONSTRUCTION ARE PART OF THE CONTRACT DOCUMENTS AND DESCRIBE THE SCOPE AND INTENT OF THE DRAWINGS. THE CONTRACT DOCUMENTS INCLUDE NOT ONLY THE DRAWINGS, BUT ALSO THE OWNER-CONTRACTOR AGREEMENTS, CONDITIONS OF THE CONTRACT, THE SPECIFICATIONS, ADDENDA, AND MODIFICATIONS ISSUED AFTER EXECUTION OF THE CONTRACT. THESE CONTRACT DOCUMENTS ARE COMPLEMENTARY, AND WHAT IS REQUIRED BY ANY ONE SHALL BE BINDING AS IF REQUIRED BY ALL. WORK NOT COMPLETELY DELINEATED HEREON SHALL BE CONSTRUCTED OF THE SAME MATERIALS AND DETAILS UNLESS OTHERWISE SHOWN MORE COMPLETELY ELSEWHERE IN THE CONTRACT DOCUMENTS.

BY USE OF THE DRAWINGS FOR CONSTRUCTION OF THE PROJECT, THE OWNER CONTRACTOR AGREES TO HOLD HARMLESS LRL FROM ANY DAMAGES, LIABILITIES OR COSTS, INCLUDING REASONABLE ATTORNEY'S FEES AND COST OF DEFENSE, ARISING FROM SUCH CHANGES.

IN ADDITION, THE CLIENT AGREES TO INCLUDE IN ANY CONTRACTS FOR CONSTRUCTION APPROPRIATE LANGUAGE THAT PROHIBITS THE CONTRACTOR OR ANY SUBCONTRACTORS, OR ANY OTHER FROM MAKING ANY CHANGES OR MODIFICATIONS TO LRL'S CONSTRUCTION DOCUMENTS WITHOUT THE PRIOR WRITTEN APPROVAL OF LRL AND THAT FURTHER REQUIRES THE CONTRACTOR TO INDEMNIFY BOTH LRL AND THE CLIENT FROM ANY LIABILITY OR COST ARISING FROM SUCH CHANGES MADE WITHOUT SUCH PROPER AUTHORIZATION.

GENERAL NOTES

EXISTING SERVICES AND UTILITIES SHOWN ON THESE DRAWINGS ARE TAKEN FROM THE BEST AVAILABLE RECORDS, BUT MAY NOT BE COMPLETE OR TO DATE. CONTRACTOR SHALL VERIFY IN FIELD FOR LOCATION AND ELEVATION OF PIPES AND CHECK WITH THE UTILITY COMPANIES BEFORE DIGGING OR PERFORMING WORK.

CONTRACTOR IS ADVISED TO COLLECT INFORMATION ON SOIL CONDITIONS BEFORE START OF CONSTRUCTION.

THE ENGINEER WAIVES ANY AND ALL RESPONSIBILITY AND LIABILITY FOR PROBLEMS WHICH ARISE FROM FAILURE TO FOLLOW THESE PLANS, SPECIFICATIONS AND THE DESIGN INTENT THEY CONVEY, OR FOR PROBLEMS WHICH ARISE FROM OTHERS' FAILURE TO OBTAIN AND/OR FOLLOW THE ENGINEER'S GUIDANCE WITH RESPECT TO ANY ERRORS, OMISSIONS, INCONSISTENCIES AMBIGUITIES OR CONFLICTS WHICH ARE ALLEGED.

CONTRACTOR TO VERIFY ALL DIMENSIONS AND NOTIFY THE ENGINEER OF ANY DISCREPANCIES BEFORE WORK COMMENCES. DO NOT SCALE DRAWINGS.

UNAUTHORIZED CHANGES:

IN THE EVENT THE CLIENT, THE CLIENT'S CONTRACTORS OR SUBCONTRACTORS, OR ANYONE FOR WHOM THE CLIENT IS LEGALLY LIABLE MAKES OR PERMITS TO BE MADE ANY CHANGES TO ANY REPORTS, PLANS, SPECIFICATIONS OR OTHER CONSTRUCTION DOCUMENTS PREPARED BY LRL ASSOCIATES LTD. (LRL) WITHOUT OBTAINING LRL'S PRIOR WRITTEN CONSENT, THE CLIENT SHALL ASSUME FULL RESPONSIBILITY FOR THE RESULTS OF SUCH CHANGES. THEREFORE THE CLIENT AGREES TO WAIVE ANY CLAIM AGAINST LRL AND TO RELEASE LRL FROM ANY LIABILITY ARISING DIRECTLY OR INDIRECTLY FROM SUCH UNAUTHORIZED CHANGES.

SCALE: 1:1000

20m 10 0 20 40m

No.	REVISIONS	BY	DATE
04	ISSUED FOR APPROVAL	V.J.	05 DEC 2024
03	ISSUED FOR APPROVAL	V.J.	16 AUG 2024
02	ISSUED FOR APPROVAL	V.J.	24 MAY 2023
01	ISSUED FOR APPROVAL	V.J.	25 NOV 2021

NOT AUTHENTIC UNLESS SIGNED AND DATED

LRL
ENGINEERING | INGENIERIE
5430 Canotek Road | Ottawa, ON, K1J 9G2
www.lrl.ca | (613) 842-3434

CLIENT
AVENUE 31

DESIGNED BY: V.J. DRAWN BY: M.L. APPROVED BY: V.J.

PROJECT
**INDUSTRIAL PARK
6160 THUNDER RD AND 5368 BOUNDARY RD
OTTAWA, ON**

DRAWING TITLE
STORMWATER MANAGEMENT PLAN

PROJECT NO.
200578

DATE
NOVEMBER 2020

C601

NOTE:
REFER TO C000 FOR LEGEND AND GENERAL NOTES

D07-12-21-0205