

SKETCH OF

# PART OF LOT 1 CONCESSION 9 (OTTAWA FRONT) Geographic Township of Gloucester CITY OF OTTAWA

Prepared by Annis, O'Sullivan, Vollebek Ltd.  
Field Work Completed May 19, 2015  
Scale 1 : 1000

Metric  
DISTANCES SHOWN ON THIS PLAN ARE IN METRES AND  
CAN BE CONVERTED TO FEET BY DIVIDING BY 0.3048

### Notes & Legend

Denotes	
□ CB	Overhead Wires
○ B	Catch Basin
△ S	Bollard
+	Sign
TEL	Telephone Booth
FW	Post and Wire
+Elev.	Location of Elevations
T/G	Top of Grate
Inv.	Invert
—	Street and Highway limit
○ PO-W	Wood Pole
○ UP	Utility Pole
○ AN	Anchor
TOS	Top of Slope
BOS	Bottom of Slope
○ LS	Light Standard
CSP	Corrugated Steel Pipe
CPP	Corrugated Plastic Pipe
∅	Diameter
T/P	Top of Pipe

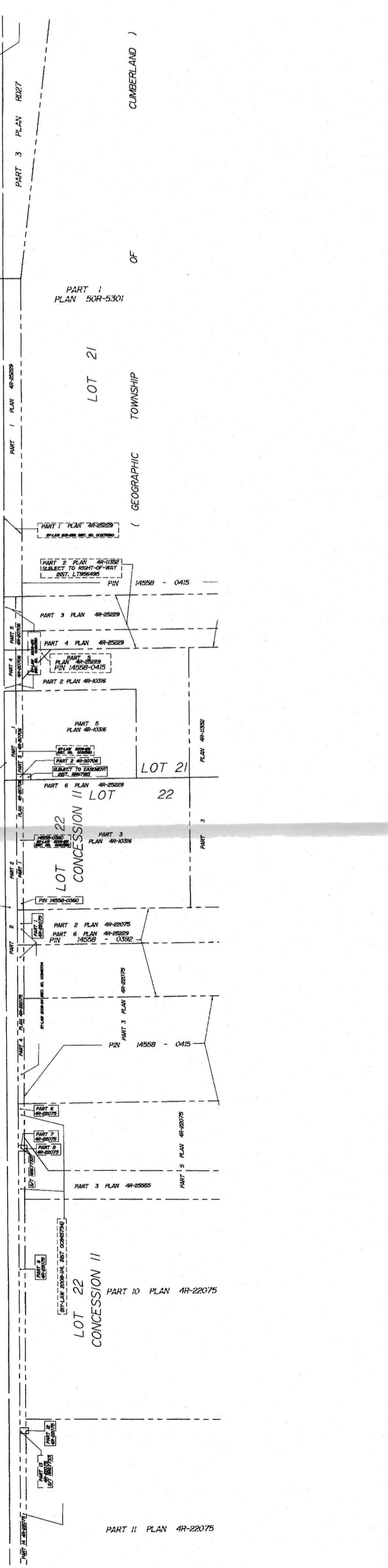
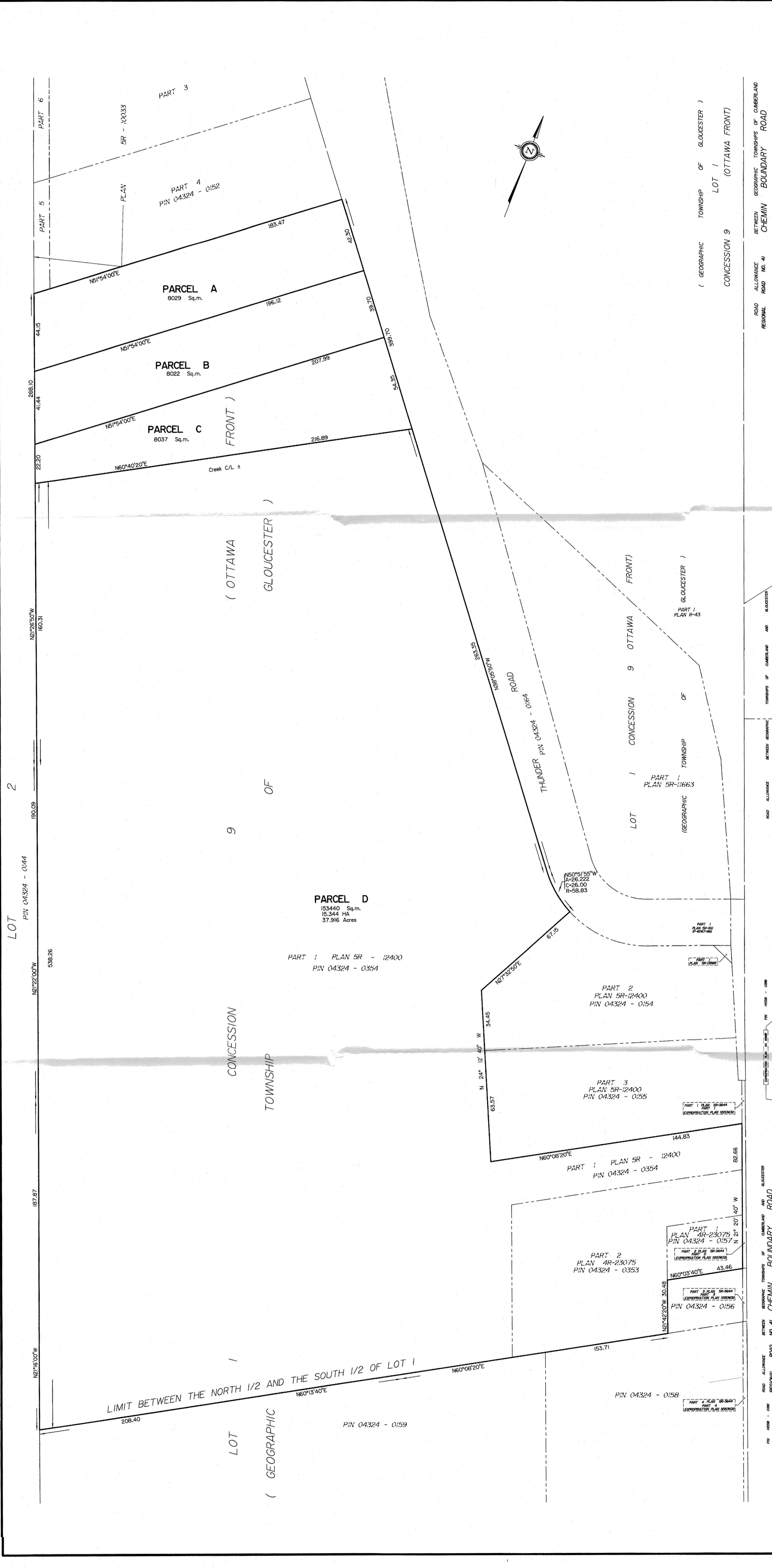
**BOUNDARY INFORMATION COMPILED FROM  
REFERENCE PLANS 4R-23075 AND 5R-12400**

### ELEVATION NOTES

- Elevations shown are geodetic and are referred to the CGVD28 geodetic datum.
- It is the responsibility of the user of this information to verify that the job benchmark has not been altered or disturbed and that its relative elevation and description agrees with the information shown on this drawing.

### UTILITY NOTES

- This drawing cannot be accepted as acknowledging all of the utilities and it will be the responsibility of the user to contact the respective utility authorities for confirmation.
- Only visible surface utilities were located.
- A field location of underground plant by the pertinent utility authority is mandatory before any work involving breaking ground, probing, excavating etc.



LOT 2  
PIN 04324 - 0144  
N21°22'00"W 180.09  
N21°26'50"W 160.31  
N21°22'00"W 538.26  
187.87  
N21°16'00"W

LIMIT BETWEEN THE NORTH 1/2 AND THE SOUTH 1/2 OF LOT 1  
N60°13'40"E 208.40  
N60°13'40"E  
PIN 04324 - 0159