

1
E002
1:500
ELECTRICAL SITE PLAN

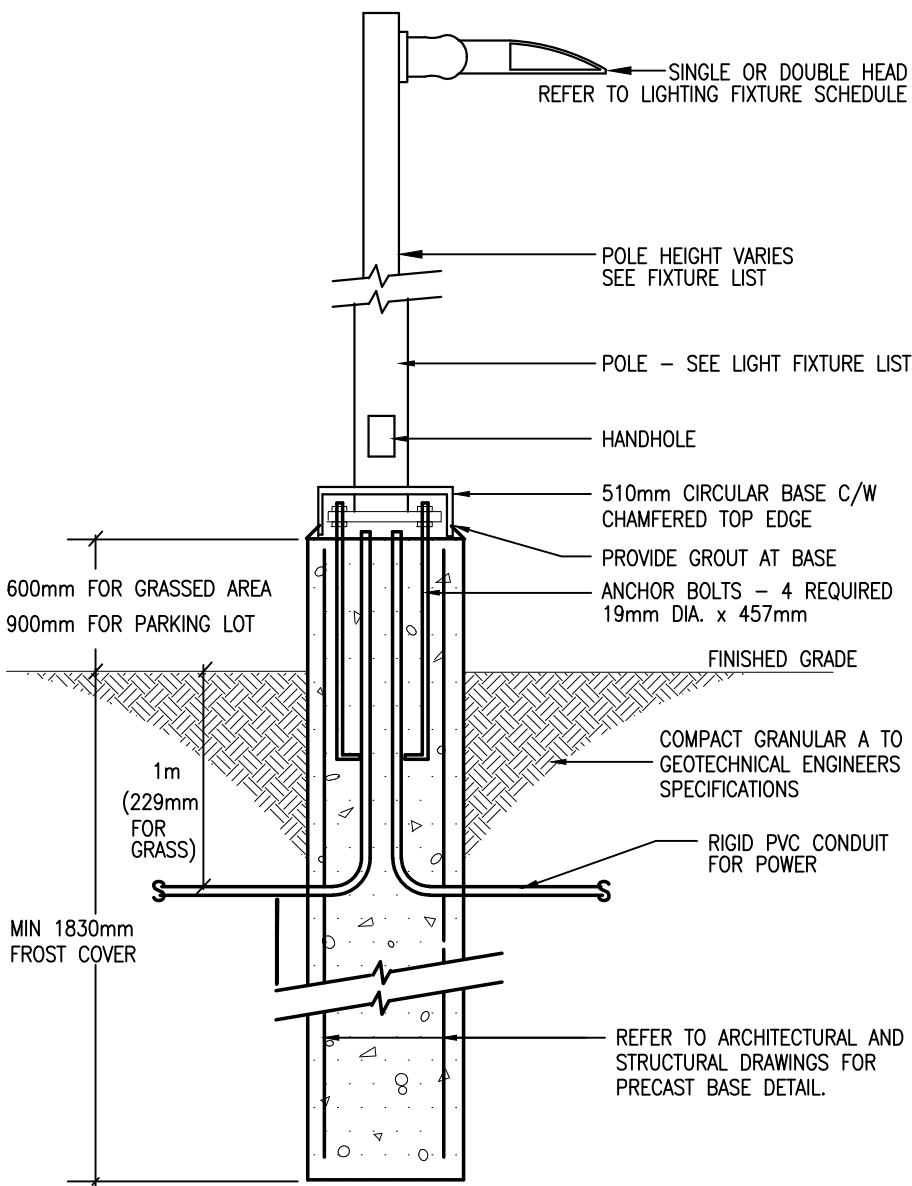
EXTERIOR LIGHTING FIXTURE SCHEDULE										
TYPE	DESCRIPTION	CATALOG NUMBER	QTY	LAMPS PER FIXTURE	WATTS	COLOUR	VOLT	MOUNTING	REMARKS	
A	EXTERIOR	LITHONIA #	-	LED	150	4000	120	POLE	(25') 5" ROUND POLE C/W SNOW GUARD, TWO FIXTURES C/W HOUSE SHIELD	
	25' POLE LIGHT	RSX2 LED P3 40K R4 MVOLT	-	LED	38	4000	120	POLE	C/W BUILT-IN SENSOR TO REDUCE LIGHTING TO 50% IF UNOCCUPIED FOR MORE THAN 30 MINUTES.	
B	EXTERIOR	LITHONIA #	-	LED	73.2	4000	120	WALL	(13') 5" ROUND POLE C/W SNOW GUARD AND ACCESSORIES	
	SINGLE POST TOP SPIDER MOUNT LIGHT	RADPT LED P2 40K MVOLT PATH R90	-	LED	38.8	4000	120	RECESSED	C/W BUILT-IN SENSOR TO REDUCE LIGHTING TO 50% IF UNOCCUPIED FOR MORE THAN 30 MINUTES.	
C	EXTERIOR	LITHONIA #	-	LED	25.15	4000	120	RECESSED	MOUNTED AT 3800mm A.F.F. REFER TO ARCHITECT ELEVATION DRAWINGS	
	LED WALL PACK	DSXW1 LED 20C 1000 40K T4M MVOLT	-	LED	38.8	4000	120	RECESSED	C/W BUILT-IN SENSOR TO REDUCE LIGHTING TO 50% IF UNOCCUPIED FOR MORE THAN 30 MINUTES.	
C1	EXTERIOR	LITHONIA #	-	LED	25.15	4000	120	RECESSED	MOUNTED AT 3800mm A.F.F. REFER TO ARCHITECT ELEVATION DRAWINGS	
	LED WALL PACK	DSXW1 LED 10C 1000 40K T2M MVOLT	-	LED	25.15	4000	120	RECESSED	C/W BUILT-IN SENSOR TO REDUCE LIGHTING TO 50% IF UNOCCUPIED FOR MORE THAN 30 MINUTES.	
D	CANOPY LIGHT	LITHONIA #	-	LED	25.15	4000	120	RECESSED	C/W BUILT-IN SENSOR TO REDUCE LIGHTING TO 50% IF UNOCCUPIED FOR MORE THAN 30 MINUTES.	
	6" DOWN LIGHT	LBR6-AL02-SWV1-AR-LSS-MMD-80CR1	-	LED	25.15	4000	120	RECESSED	C/W BUILT-IN SENSOR TO REDUCE LIGHTING TO 50% IF UNOCCUPIED FOR MORE THAN 30 MINUTES.	

DRAWING NOTES

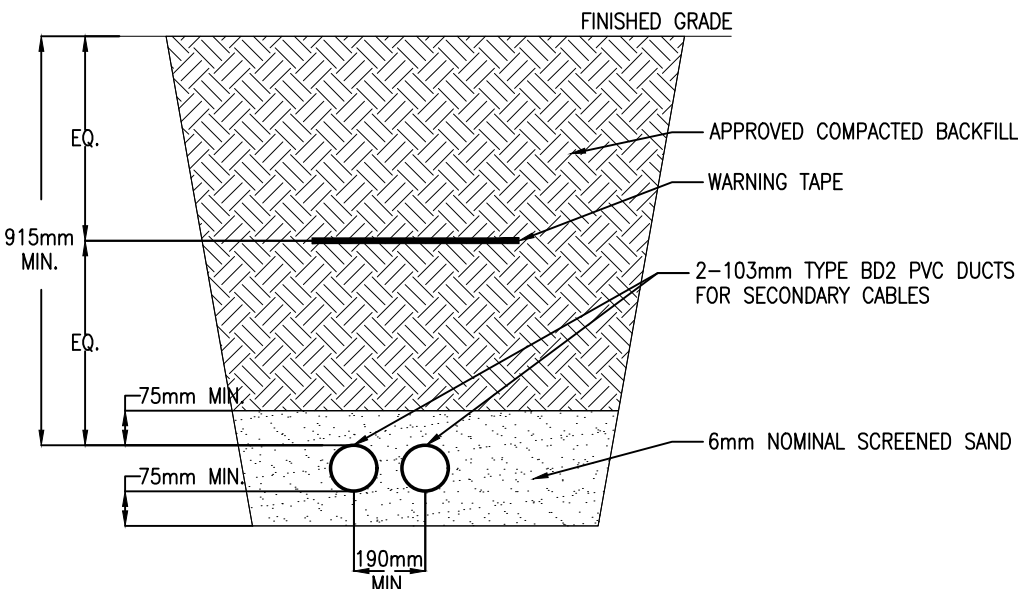
- PROPOSED LOCATION FOR 500KVA PADMOUNT TRANSFORMER SUPPLIED BY HYDRO OTTAWA. SECONDARY: 347/600V, 3ø, 4W. GENERAL CONTRACTOR TO PROVIDE C/W MANHOLE, CONCRETE BASE AND PAD. PROVIDE GROUNDING C/W BOLLARDS AS PER HYDRO OTTAWA STANDARD. TRANSFORMER SHALL BE MIN. 2M AWAY FROM THE CURB. CONTACT AND COORDINATE HYDRO OTTAWA PROJECT MANAGER AND HYDRO OTTAWA CIVIL INSPECTOR AT START OF THE CIVIL WORK.
- DIRECT BURIED SECONDARY FEEDERS IN PVC DUCTS. REFER TO RISER DIAGRAM DRAWING E003 AND DETAIL 3/E002. SECONDARY FEEDERS REQUIRE COMPRESSION TYPE CONNECTORS AT THE PADMOUNT TRANSFORMER.
- 2-100MM DIRECT BURIED PVC DUCT FOR TELEPHONE SERVICE FROM EXISTING BELL/ROGERS PEDESTAL AND 1-100MM DIRECT BURIED PVC DUCT FOR FIBRE OPTIC SERVICE FROM NEW ROGERS (ATRIA NETWORK) PEDESTAL TO BACKBOARD IN GROUND FLOOR TELECOM ROOM. SEE DETAIL 4/E002. COORDINATE WORK WITH SERVICE PROVIDER.
- TYPICAL EXTERIOR LIGHT STANDARDS. SEE DETAIL 2/E002 AND LIGHT FIXTURE SCHEDULE. PROVIDE RELAY AND CONTROL BY BAS.
- TYPICAL BUILDING WALL MOUNTED EXTERIOR FULL CUT-OFF LIGHT FIXTURE. REFER TO ARCHITECTURAL ELEVATIONS FOR EXACT LOCATION AND MOUNTING HEIGHT. PROVIDE RELAY AND CONTROL BY BAS.
- RUN DIRECT BURIED 3-100MM PVC CONDUITS, CAPPED AND C/W PULL CORDS FOR POWER FROM MAIN ELECTRICAL ROOM TO SERVICE MANHOLE C/W COVER FOR FUTURE PORTABLES AS SHOWN. SEE DETAIL 5/E002.
- RUN DIRECT BURIED 2-100MM PVC CONDUITS C/W PULL CORDS AND TERMINATE IN MANHOLE C/W COVER, FOR SECURITY, DATA, PA/INTERCOM AND FIRE ALARM FROM SERVICE ROOM TO SERVICE MANHOLE FOR FUTURE PORTABLES. SEE DETAIL 6/E002.
- PORTABLE SERVICE MANHOLES EQUAL TO USI E1B+E3 COMBO C/W COVER BY GENERAL TRADES. ONE FOR POWER AND ONE FOR DATA/SECURITY/FIRE ALARM. ELECTRICAL CONTRACTOR TO COORDINATE ALL CONDUIT KNOCK OUTS.
- TYPICAL OUTDOOR P.A. HORN C/W WIREGUARD. PROVIDE 21MM CONDUIT TO ACCESSIBLE CEILING SPACE. WIRING BY P.A. SYSTEM CONTRACTOR.
- PROVIDE 3 CELL PRIMARY CONCRETE ENCASED DUCTBANK C/W PULL ROPE TO HYDRO OTTAWA STANDARDS. ALLOW FOR 12 METERS LENGTH. COORDINATE EXACT RUN WITH HYDRO OTTAWA.
- PROVIDE TWO ELECTRIC VEHICLE CHARGING STATION AS CORE+ C/W WEATHERPROOF NEMA 4 ENCLOSURE C/W AND PEDestal. PROVIDE 30A-2P BREAKERS C/W 3/8+GND-27MM C/W UNDERGROUND PVC CONDUIT AND CONNECT TO 120/208V PANEL. OCT # AS INDICATED. REFER TO ARCHITECTURAL DRAWINGS FOR BASE DETAIL. PROVIDE SIGNAGE ON PEDESTAL "EV CHARGING STATION".
- PROVIDE 30A-2P BREAKER C/W 3/8+GND-27MM C/W UNDERGROUND PVC CONDUIT FROM 120/208V PANEL AND TERMINATE IN WEATHERPROOF JUNCTION BOX FOR FUTURE VEHICLE CHARGING STATION.

GENERAL NOTES:

- COORDINATE BURIED SERVICES WITH ALL OTHER SERVICES (WATER, SEWER, GAS, HYDRO, TELEPHONE, CABLE, ETC.) REFER TO RELATED SITE SERVICES DRAWINGS.
- COORDINATE WITH UTILITY AND TELEPHONE/CATV SERVICES FOR LOCATION AND FINAL CONDUIT REQUIREMENTS.
- COORDINATE LOCATION OF LIGHTING FIXTURES WITH LANDSCAPE PLANS.
- EXCAVATION, BACKFILL AND CONCRETE, REINFORCING ASSOCIATED WITH ELECTRICAL WORK TO BE BY GENERAL CONTRACTOR.
- USE PVC FOR UNDERGROUND ONLY. CHANGE TO EMT INSIDE BUILDING.
- PROVIDE PVC/EMT TRANSITION ADAPTORS AT EXTERIOR TO INTERIOR CONDUITS.



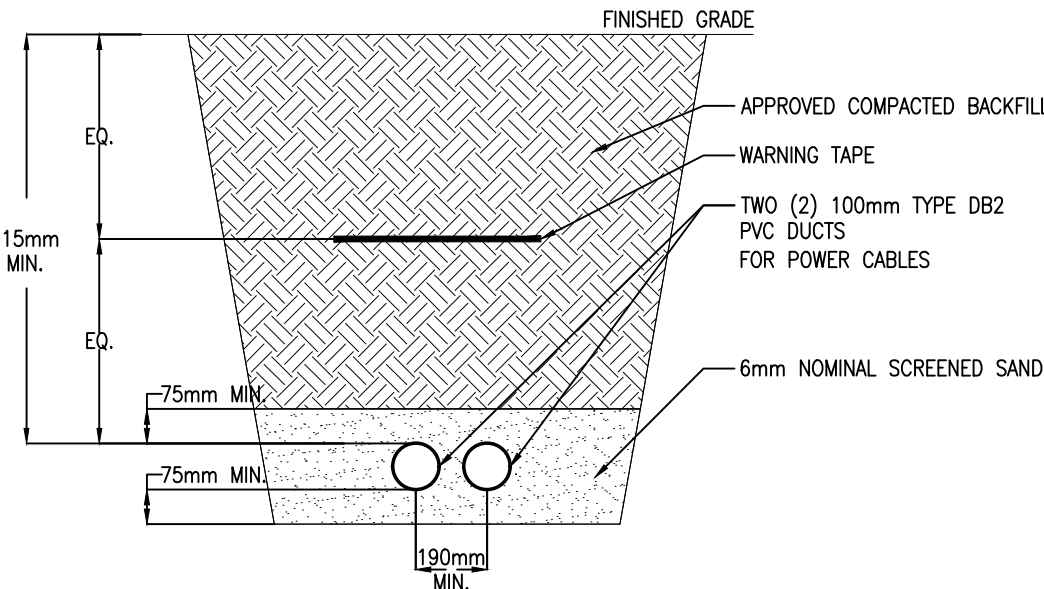
2
E002
N.T.S.
TYPICAL
BASE DETAIL FOR EXTERIOR LIGHT STANDARD



NOTES:

- TRENCH AND DUCTS TO BE INSPECTED PRIOR TO SAND FILL BEING PLACED.
- MAKE PROVISIONS FOR WORKING IN SANDY TERRAIN.
- DUCT JOINTS TO BE GLUED USING AN APPROVED PVC SOLVENT, WHEN APPLICABLE.
- ALL DUCTS MUST BE CLEANED AND RODDED, AND A NYLON ROPE TO BE LEFT IN EACH DUCT.

3
E002
N.T.S.
SECONDARY DUCT



NOTES:

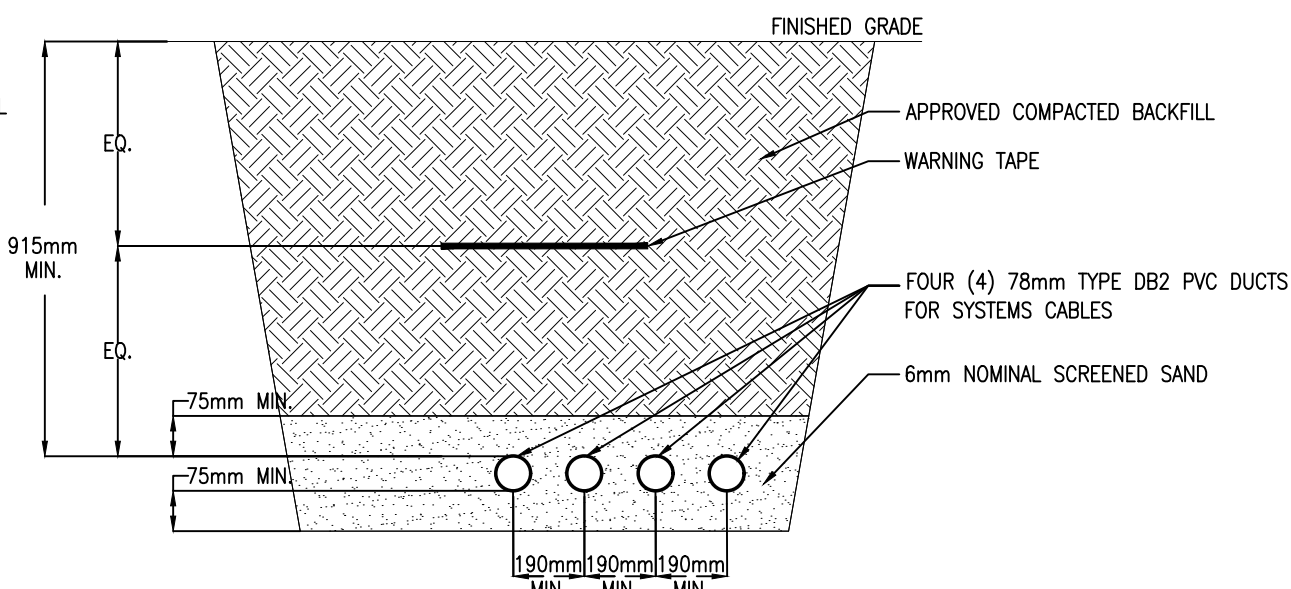
- TRENCH AND DUCTS TO BE INSPECTED PRIOR TO SAND FILL BEING PLACED.
- MAKE PROVISIONS FOR WORKING IN SANDY TERRAIN.
- DUCT JOINTS TO BE GLUED USING AN APPROVED PVC SOLVENT, WHEN APPLICABLE.
- ALL DUCTS MUST BE CLEANED AND RODDED, AND A NYLON ROPE TO BE LEFT IN EACH DUCT.
- ALL DUCTS SHALL BE TERMINATED IN MANHOLE, USI-E22 C/W COVER. EACH DUCT.

5
E002
N.T.S.
DIRECT BURRIED SEVICES
TO FUTURE PORTABLES

NOTES:

- TRENCH AND DUCTS TO BE INSPECTED PRIOR TO SAND FILL BEING PLACED.
- MAKE PROVISIONS FOR WORKING IN SANDY TERRAIN.
- DUCT JOINTS TO BE GLUED USING AN APPROVED PVC SOLVENT, WHEN APPLICABLE.
- ALL DUCTS MUST BE CLEANED AND RODDED, AND A NYLON ROPE TO BE LEFT IN EACH DUCT.

4
E002
N.T.S.
COMMUNICATION DUCT



NOTES:

- TRENCH AND DUCTS TO BE INSPECTED PRIOR TO SAND FILL BEING PLACED.
- MAKE PROVISIONS FOR WORKING IN SANDY TERRAIN.
- DUCT JOINTS TO BE GLUED USING AN APPROVED PVC SOLVENT, WHEN APPLICABLE.
- ALL DUCTS MUST BE CLEANED AND RODDED, AND A NYLON ROPE TO BE LEFT IN EACH DUCT.
- ALL DUCTS SHALL BE TERMINATED IN MANHOLE, USI-E22 C/W COVER. EACH DUCT.

6
E002
N.T.S.
DIRECT BURRIED SEVICES
TO FUTURE PORTABLES



Client

2021-11-23 ISSUED FOR SITE PLAN CONTROL

DATE REVISION REF

THE ENGINEER WAIVES ANY AND ALL RESPONSIBILITY AND LIABILITY FOR PROBLEMS WHICH ARISE FROM FAILURE TO FOLLOW THESE PLANS, SPECIFICATIONS AND THE DESIGN INTENT. THEY CONVEY, OR FOR PROBLEMS WHICH ARISE FROM OTHER FAILURE TO OBTAIN AND / OR FOLLOW THE ENGINEER'S GUIDANCE WITH RESPECT TO ANY ERRORS, OMISSIONS, INCONSISTENCIES, AMBIGUITIES OR CONFLICTS WHICH ARE ALLEGED.

THIS DRAWING IS THE PROPERTY OF GOODKEY WEEDMARK & ASSOCIATES LIMITED AND ALL COPYRIGHTS ARE RESERVED. NO USE OF THIS DRAWING MAY BE MADE WITHOUT EXPRESS WRITTEN CONSENT.

DO NOT SCALE DRAWINGS

L'INGÉNIEUR DÉCLINE TOUTE RESPONSABILITÉ DÉCOULANT DE PROBLÈMES FAISANT SUITE AU NON RESPECT DES PLANS, DEVIS ET DE L'INTENTION DU CONCEPT QU'ILS INDICENT OU DE TOUS LES PROBLÈMES POUVANT RÉSULTER DU DÉFAUT D'OBTENIR ET / OU DE SUIVRE LES CONSEILS DE L'INGÉNIEUR EN CE QUI CONCERNE LES ERREURS, OMISSIONS, INCONSISTANCES, AMBIGUITÉS OU CONFLITS ALLÉGUÉS.

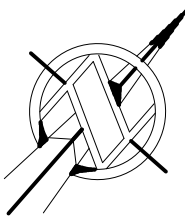
CE Dessin EST LA PROPRIÉTÉ LITTÉRAIRE DE GOODKEY WEEDMARK & ASSOCIATES LIMITED ET TOUS LES DROITS SONT RÉSERVÉS. L'UTILISATION EST INTERDITE SANS LE CONSENTEMENT ÉCRIT DE L'AUTEUR.

NE PAS MESURER LES Dessins A L'ÉCHELLE



GOODKEY WEEDMARK & ASSOCIATES LIMITED
1688 Woodward Dr. 613 727-5111 Voice
Ottawa Ontario 613 727-5115 Fax
Canada K2C 3R8 www.gwal.com Web

Project north
Nord du projet



Seal/Scelus



Project/Projet
OCSB BARRHAVEN #1
ELEMENTARY SCHOOL

Drawing title/Titre du dessin
ELECTRICAL SITE PLAN

Scale
Echelle AS NOTED

Design by
Conçu par J. GUAN

Drawn by
Dessiné par J. GUAN

Reviewed by
Examiné par D. VYAS

Date
November 21

Project no./No. du projet
2021-123-1

Drawing/Dessin

Revision no.

Acad file/Fichier:
2\2021-123-1\ELEC

0

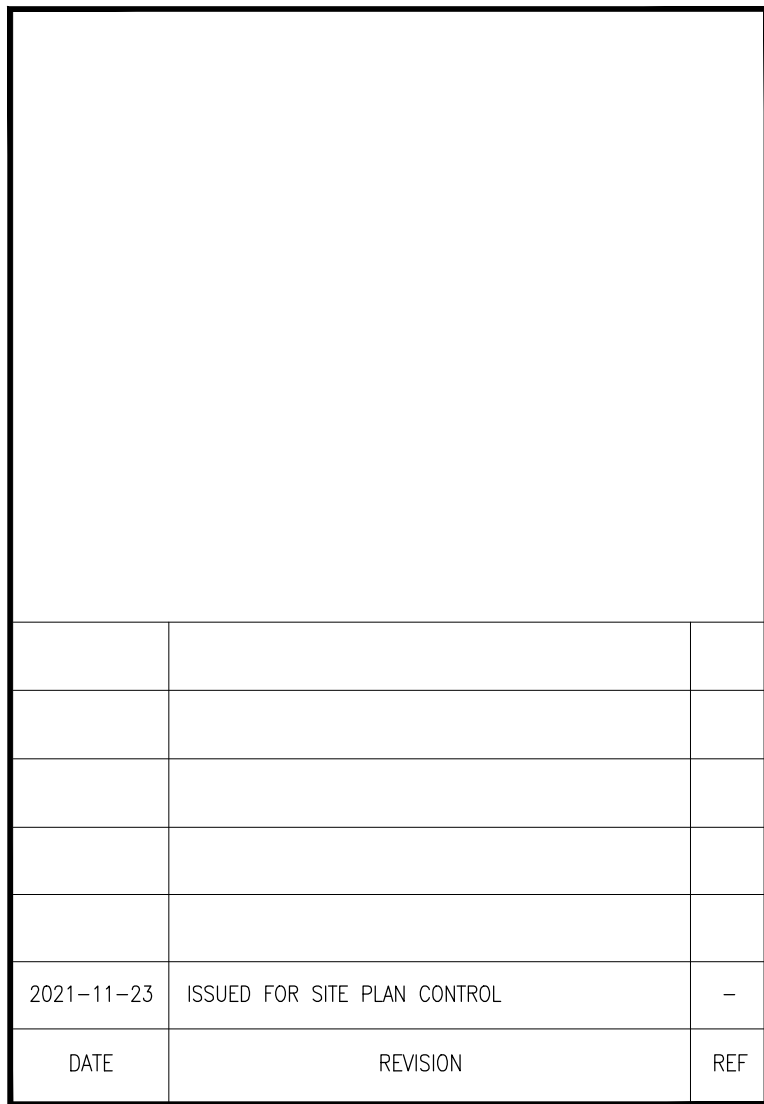
2\2021-123-1\ELEC

OF 12



Statistics

Description	Symbol	Avg	Max	Min	Max/Min	Avg/Min
Canopy	+	14.8 fc	18.0 fc	12.8 fc	1.4:1	1.2:1
Parking Lot	+	2.3 fc	7.0 fc	0.6 fc	11.7:1	3.8:1
Property Line	+	0.1 fc	0.5 fc	0.0 fc	N/A	N/A
Walkways Around Building	+	1.2 fc	6.0 fc	0.0 fc	N/A	N/A



 **Goodkey Weedmark**
Consulting Engineers

GOODKEY WEEDMARK & ASSOCIATES LIMITED

1688 Woodward Dr. 613 727-5111 Voice
 Ottawa Ontario 613 727-5115 Fax
 Canada K2C 3R8 www.gwcl.com Web

