

TOPOGRAPHIC PLAN OF SURVEY OF  
**PART OF LOT 1  
 CONCESSION 3 (OTTAWA FRONT)  
 GEOGRAPHIC TOWNSHIP OF GLOUCESTER  
 CITY OF OTTAWA**  
 FARLEY, SMITH & DENIS SURVEYING LTD. 2021

**EROSION AND SEDIMENTATION**

- DURING ALL CONSTRUCTION ACTIVITIES EROSION AND SEDIMENTATION SHALL BE CONTROLLED BY THE FOLLOWING TECHNIQUES:
- LIMIT EXTENT OF EXPOSED SOILS AT ANY GIVEN TIME.
  - RE-VEGETATE EXPOSED AREAS AS SOON AS POSSIBLE.
  - MINIMIZE AREA TO BE CLEARED AND GRUBBED.
  - INSTALL SILT FENCE AS PER AS PER OPSD 219.110 DRAWING SHOWN ATTACHED.
  - TO PREVENT SEDIMENT FROM ENTERING EXISTING CONVEYANCE SYSTEMS.
  - MUST BE INSTALLED BEFORE COMMENCEMENT OF CONSTRUCTION AND IN ACCORDANCE WITH THE TOE-IN-DETAIL.
  - SILT FENCE CAN BE REMOVED AFTER LANDSCAPING IS COMPLETE.
  - NO REFUELING OR CLEANING EQUIPMENT NEAR CATCH BASIN.
  - PROVIDE SEDIMENT TRAPS AND BASINS DURING DE-WATERING.
  - PLAN CONSTRUCTION ON APPROPRIATE DAYS TO AVOID FLOODING.
  - INSTALL FILTER SOCKS BETWEEN CATCH BASIN COVER AND FRAME.

**CONTRACTOR NOTE:**  
 THE CONTRACTOR SHALL IMPLEMENT BEST MANAGEMENT PRACTICES, TO PROVIDE FOR PROTECTION OF THE AREA DRAINAGE SYSTEM AND THE SURROUNDING WATERCOURSE OR SWALES, DURING CONSTRUCTION ACTIVITIES. THE CONTRACTOR ACKNOWLEDGES THAT FAILURE TO IMPLEMENT APPROPRIATE EROSION AND SEDIMENT CONTROL MEASURES MAY BE SUBJECT TO PENALTIES IMPOSED BY ANY APPLICABLE REGULATORY AGENCY.

- THE FOLLOWING PRACTICES WILL BE FOLLOWED AFTER EVERY RAINFALL TO GUARANTEE THE PROPER PERFORMANCE:
- VERIFY WATER IS NOT FLOWING UNDER SILT FENCES.
  - BUILD UP MATERIAL SHOULD BE REMOVED WHEN IT REACHES A DEPTH EQUAL TO HALF THE HEIGHT OF THE FENCE.
  - CLEAN OR CHANGE FILTER SOCKS AT CATCH BASINS.
  - A VISUAL INSPECTION SHALL BE COMPLETED DAILY ON SEDIMENT CONTROL BARRIERS AND CATCH BASIN AND ANY DAMAGE REPAIRED IMMEDIATELY. THIS PRACTICE WILL ENSURE THAT THE SEDIMENT CONTROL BARRIERS ARE RETAINING ADEQUATELY AND WILL NOT COLLAPSE.
  - IN SOME CASES BARRIERS MAY BE REMOVED TEMPORARILY TO ACCOMMODATE THE CONSTRUCTION OPERATIONS; AFFECTED BARRIERS WILL BE REINSTATED AT NIGHT WHEN CONSTRUCTION IS COMPLETED.
  - A SILT FENCE BARRIER (OPSD 219.100 TO 219.261) TO BE INSTALLED.
  - CONSTRUCTION AND MAINTENANCE REQUIREMENTS FOR EROSION AND SEDIMENT CONTROLS TO COMPLY WITH ONTARIO PROVINCIAL STANDARD SPECIFICATION OPSS 805, AND PROPER MUNICIPALITY SPECIFICATIONS.



Derrick Clark PEng  
 EAU Structural & Environmental Svs  
 tel., 613 869 0523, derrick.r.clark@rogers.com

Consultants  
**PTabet** architecte  
 2232 rue Saint-Louis,  
 Gatineau QC J8T 5L6  
 t.: 819.568.3994  
 c.: 613.797.5375  
 pierretabetarchitecte.com

No	DATE	REVISION	App.
1			
2			
3			
4			
5			

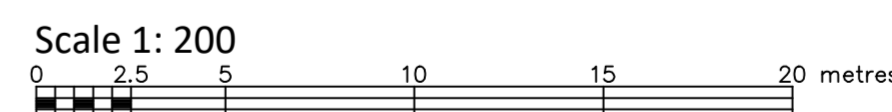
  

No	DATE	ISSUED FOR	App.
1	2022/09/14	SITE PLAN CONTROL	D.K.
2			
3			
4			
5			

**NOTES & LEGEND:**

- - - - - SITE BOUNDARY
- [Cross-hatched box] PROPOSED BUILDING ENVELOP
- [Circle with crosshair] EXISTING FIRE HYDRANT
- [Dashed line] SILT FENCE PER OPSD 219.110

- MUD MAT NOT REQUIRED.
- CB#1, #2 & #3 INLET TO BE PROTECTED WITH GEO-FABRIC.



**Metric Note**  
 Distances and coordinates on this plan are in metres and can be converted to feet by dividing by 0.3048.

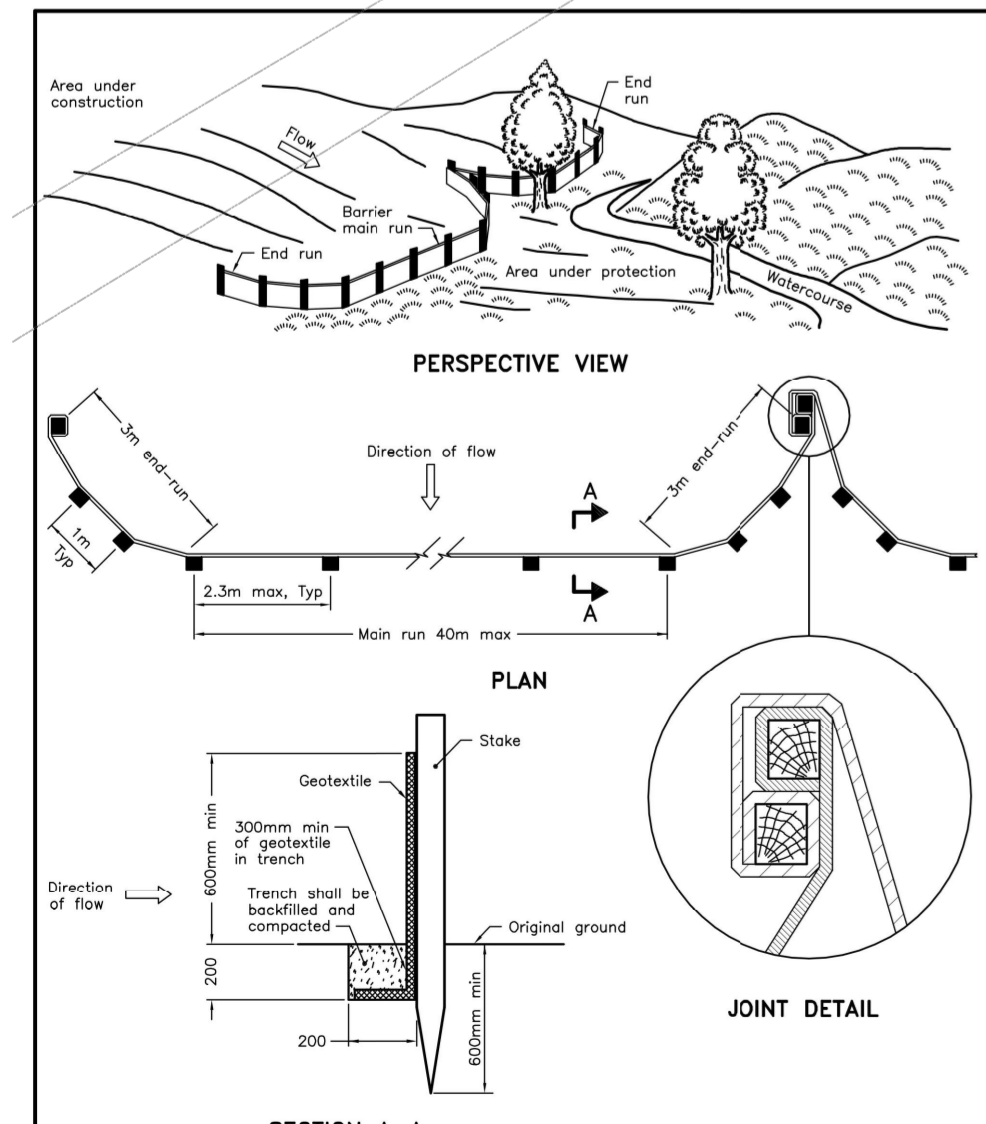
**Distance Note**  
 Distances shown on this plan are ground distances and can be converted to grid distances by multiplying by the combined scale factor of 0.99996.

**Bearing Note**  
 Bearings are grid, are referred to the westerly limit of Part 1 on Plan 4R-10640 having a bearing of N 24° 32' 44" W and are referred to the Central Meridian of MTM Zone (76°30' West Longitude) NAD-83 (Original).

For bearing comparisons, a rotation of 0°00'45" clockwise was applied to bearings on P2.

**Elevation Notes**  
 1. Elevations shown are geodetic and are referred to Geodetic Datum CGVD-1928 :1978.  
 2. Elevations derived from NGS Monument No. 01680229 having a published elevation of 86.121 metres.  
 3. It is the responsibility of the user of this information to verify that the job benchmark has not been altered or disturbed and that it's relative elevation and description agrees with the information shown on this drawing.

- Utility Notes**
- This drawing cannot be accepted as acknowledging all of the utilities and it will be the responsibility of the user to contact the respective utility authorities for confirmation.
  - Only visible surface utilities were located.
  - Underground utility data compiled from City of Ottawa utility sheet reference: G-32-07, G-32-08, PG05-501-1, 14559-0242 & 14559-0243.
  - Sanitary and storm sewer grades and inverts were compiled from: City of Ottawa Underground Plans.
  - A field location of underground plant by the pertinent utility authority is mandatory before any work involving breaking ground, probing, excavating etc. CONFIRM

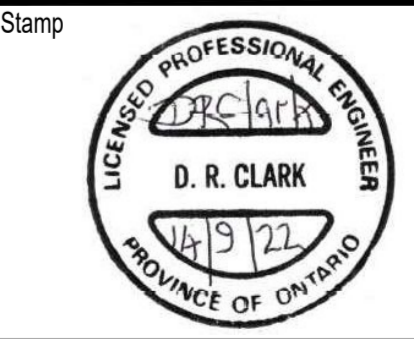


**NOTE:**  
 A. All dimensions are in millimetres unless otherwise shown.

ONTARIO PROVINCIAL STANDARD DRAWING Nov 2015 Rev. 2

**LIGHT-DUTY  
 SILT FENCE BARRIER**

OPSD 219.110



Project  
**ORLEANS RESIDENTIAL & MEDICAL FACILITY**  
 3 996 Innes Road, Ottawa, ON.

Title	EROSION & SEDIMENT CONTROL PLAN	Drawn by: A.F.	Scale	1:200	
		Verif. by: D.K.			
Date:	2022/09/14	Revision:	0	Drawing #	ES