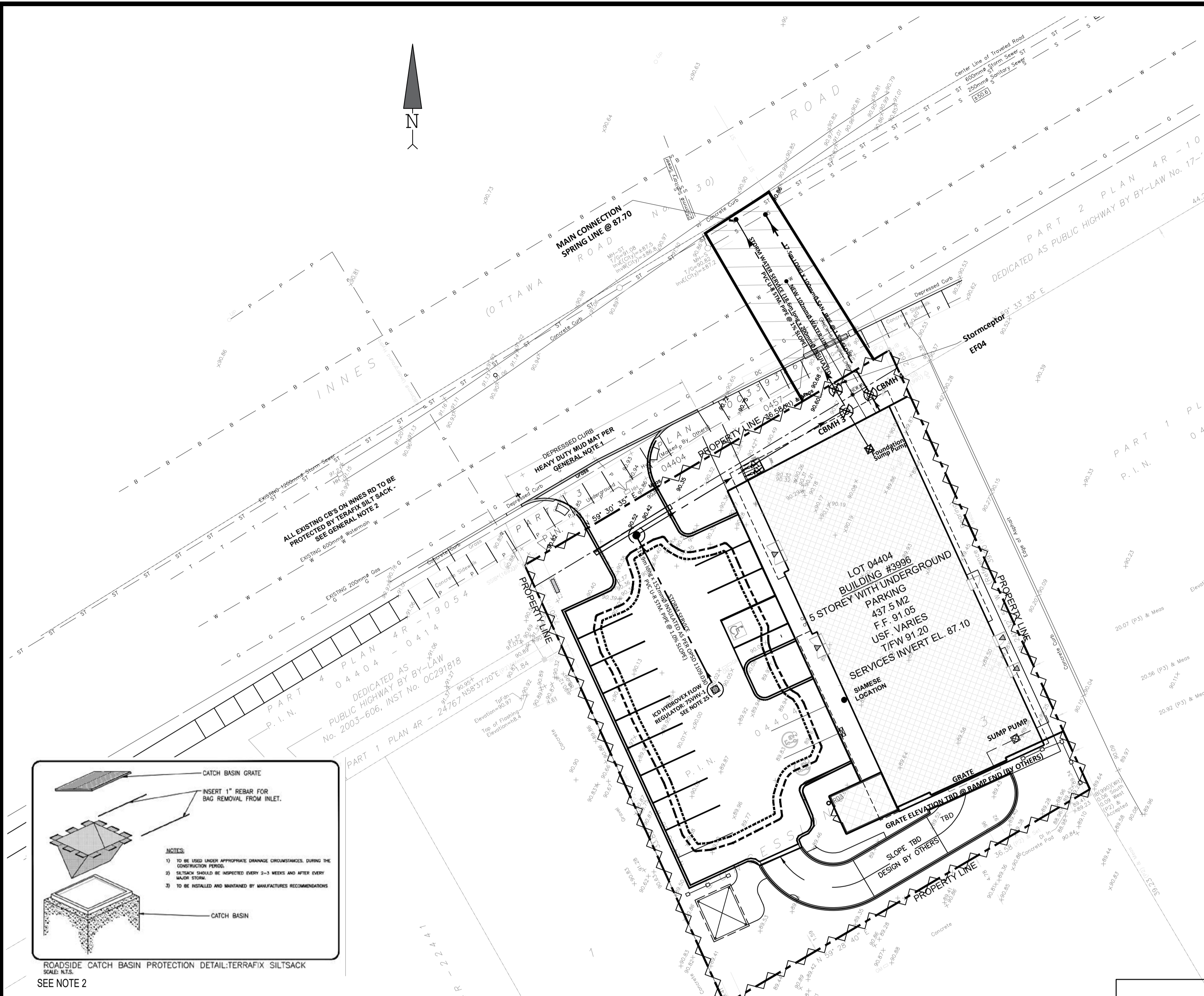


NOTES: EROSION AND SEDIMENT CONTROL
1. CONTRACTOR SHALL IMPLEMENT BEST MANAGEMENT PRACTICES TO PROVIDE FOR THE PROTECTION OF THE AREA DRAINAGE SYSTEM AND THE RECEIVING WATERCOURSE, DURING CONSTRUCTION ACTIVITIES. THE CONTRACTOR ACKNOWLEDGES THAT FAILURE TO IMPLEMENT EROSION AND SEDIMENT CONTROL MEASURES MAY BE SUBJECT TO PENALTIES IMPOSED BY ANY APPLICABLE REGULATORY AGENCY.



GENERAL NOTES & LEGEND:

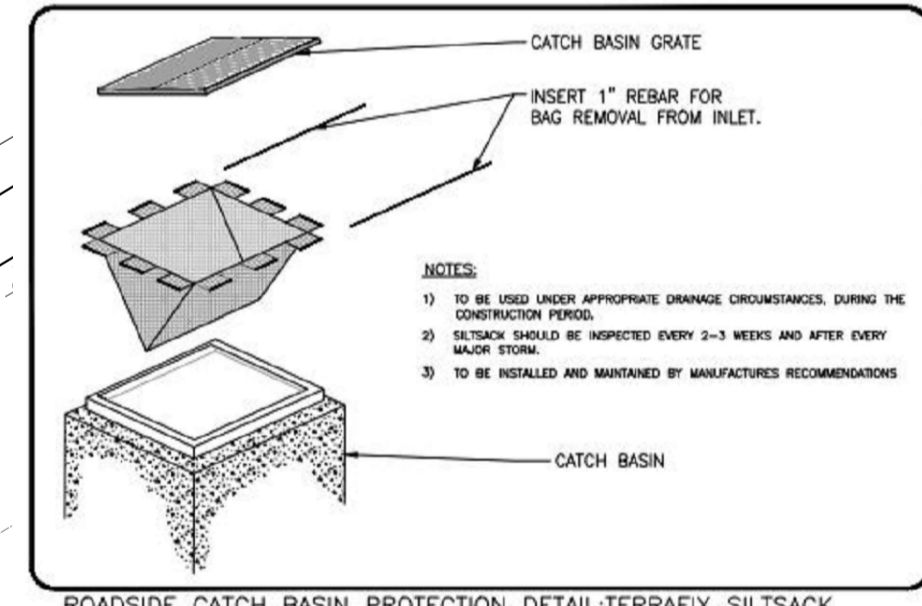
- PROPERTY LINE
- ~ SILT FENCE PER OPSD 219.130
- [Symbol] PROPOSED BUILDING ENVELOPE
- [Symbol] EXISTING FIRE HYDRANT
- [Symbol] DC PROPOSED CONCRETE CURB WITH DEPRESSION
- [Symbol] HP EXISTING HYDRO POLE
- [Symbol] EXISTING GROUND ELEVATION
- [Symbol] PROPOSED ELEVATION
- [Symbol] PROPOSED DOOR ENTRANCE
- [Symbol] DIRECTION AND SLOPE OF SURFACE WATER FLOW
- [Symbol] F.F. PROPOSED FINISHED FLOOR ELEVATION
- [Symbol] USF PROPOSED UNDERSIDE OF FOOTING ELEVATION
- [Symbol] BM SITE BENCHMARK SITE BENCHMARK 2 NAILS IN UTILITY POLE ELEVATION=91.06
- [Symbol] TORW PROPOSED TOP OF RETAINING WALL
- [Symbol] BORW PROPOSED BOTTOM OF RETAINING WALL
- 100 YEAR STORM PONDING LIMIT CONTOUR LINE
- 100 YEAR + 20% STORM PONDING LIMIT CONTOUR LINE
- [Symbol] As ASPHALT
- [Symbol] Co CONCRETE
- [Symbol] Gr GRASS
- [Symbol] TREE

1. HEAVY DUTY MUD MAT IS REQUIRED AT SITE ENTRANCE
2. ALL CB TO BE PROTECTED WITH TERAFIX SILT SACK
3. CONCRETE BARRIER CURB PER OPSD 600.110
4. SEWER/STORM LATERAL CONNECTIONS PER OPSD 1006.020
5. THE CONTRACTOR IS REQUIRED TO GET WRITTEN PERMISSION FROM ADJACENT PROPERTY OWNERS FOR WORK OUTSIDE THE PROPERTY LINE
6. HEAVY DUTY SILT FENCE PER OPSD 219.136
7. THE FOLLOWING DOCUMENTS HAVE BEEN REVIEWED - CITY OF OTTAWA STANDARD TENDER DOCUMENTS FOR UNIT PRICE (DO-006F 1004&F1005) - GUIDELINES ON EROSION & SEDIMENT CONTROL FOR URBAN SITES, MAY 1987 - ENVIRONMENTAL GUIDELINES FOR ACCESS ROADS & WATER CROSSINGS BY O.M.N.R.

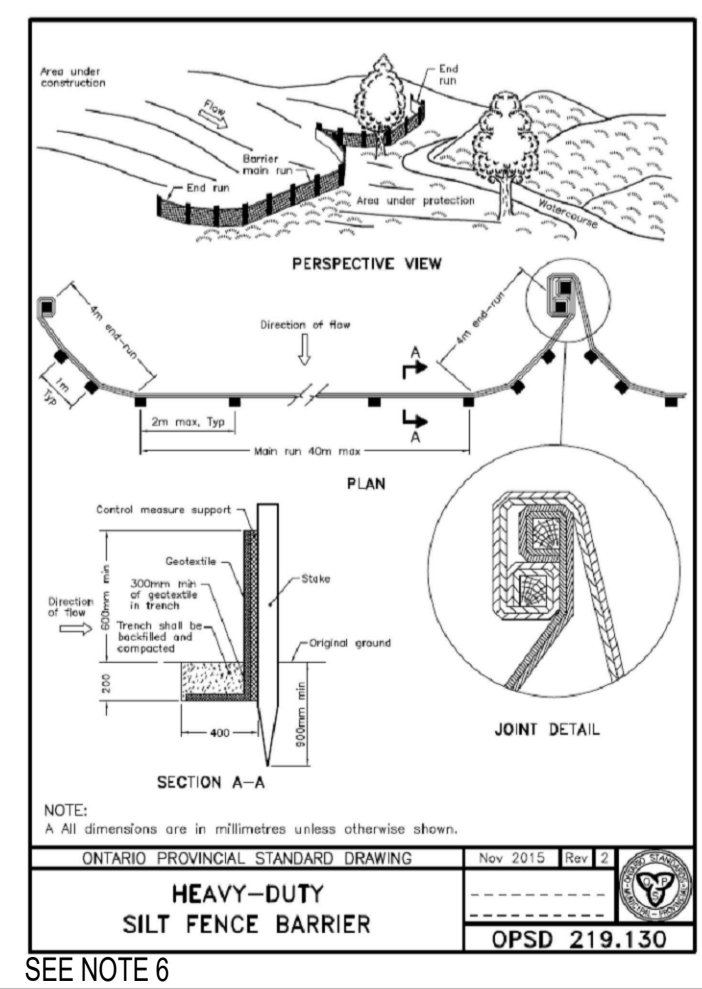
Stamp
C2

Project
ORLEANS RESIDENTIAL & MEDICAL FACILITY
3996 Innes Road, Ottawa, ON.

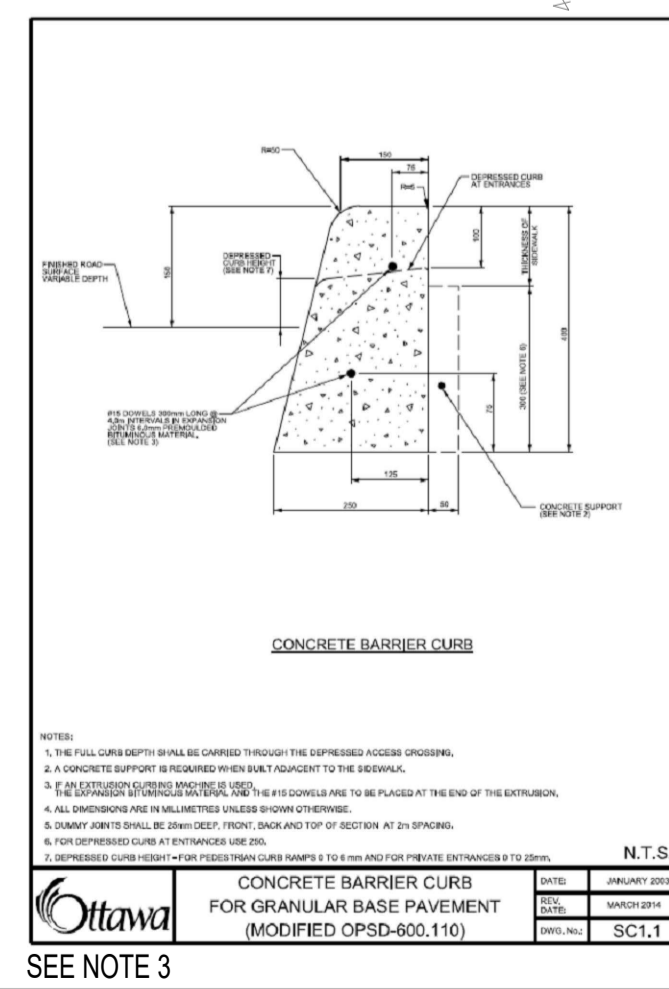
Title: EROSION & SEDIMENT CONTROL PLAN	Drawn / A.F. / Verif. / D.K.	Scale: 1:250
Date: 2023/03/30	Revision: 1	Drawing #: ES



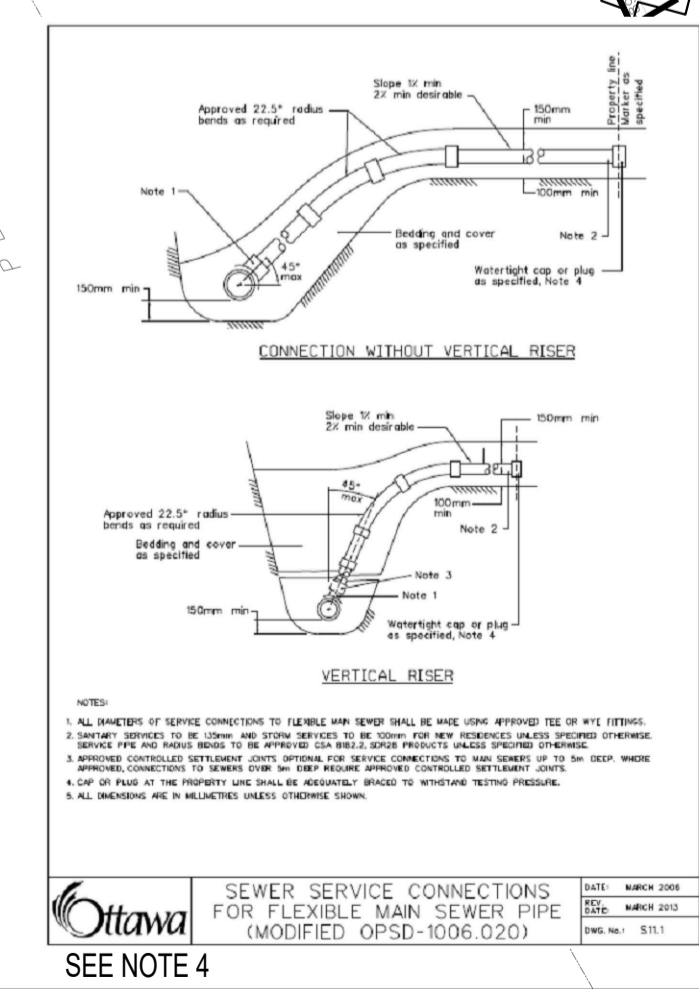
SEE NOTE 2



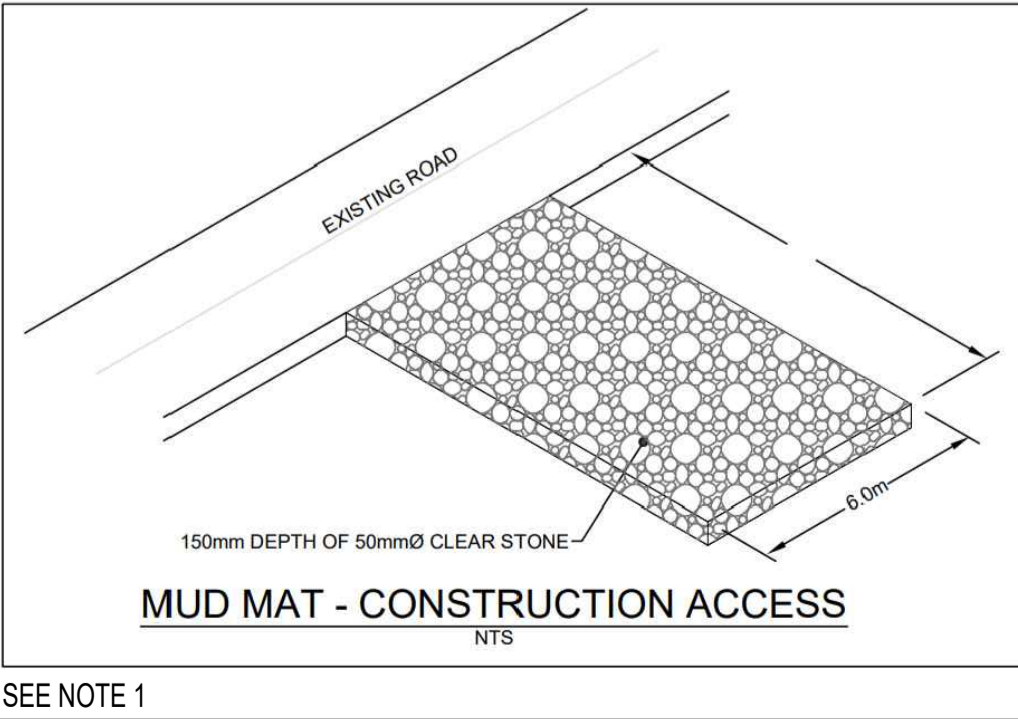
SEE NOTE 6



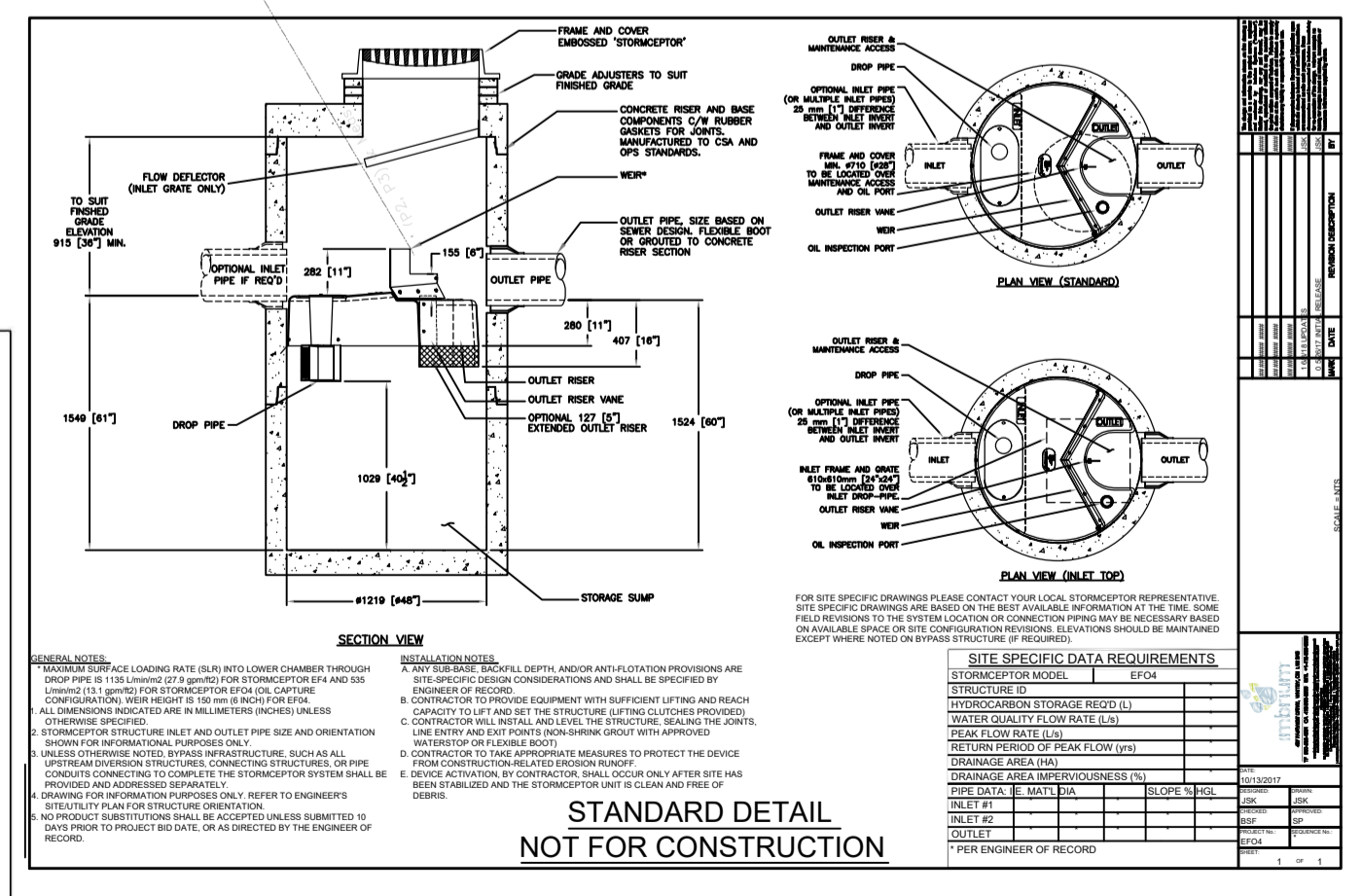
SEE NOTE 3



SEE NOTE 4



SEE NOTE 1



Scale 1: 250