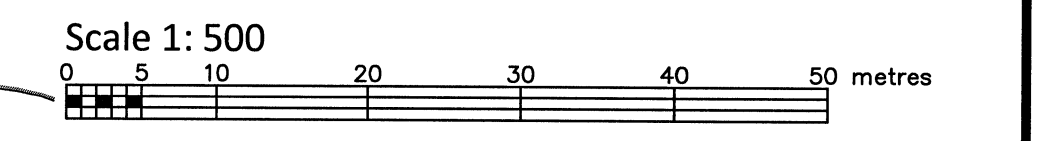


PLAN OF SURVEY OF
**PART OF BLOCKS 33 AND 34
 REGISTERED PLAN M-280
 CITY OF OTTAWA**



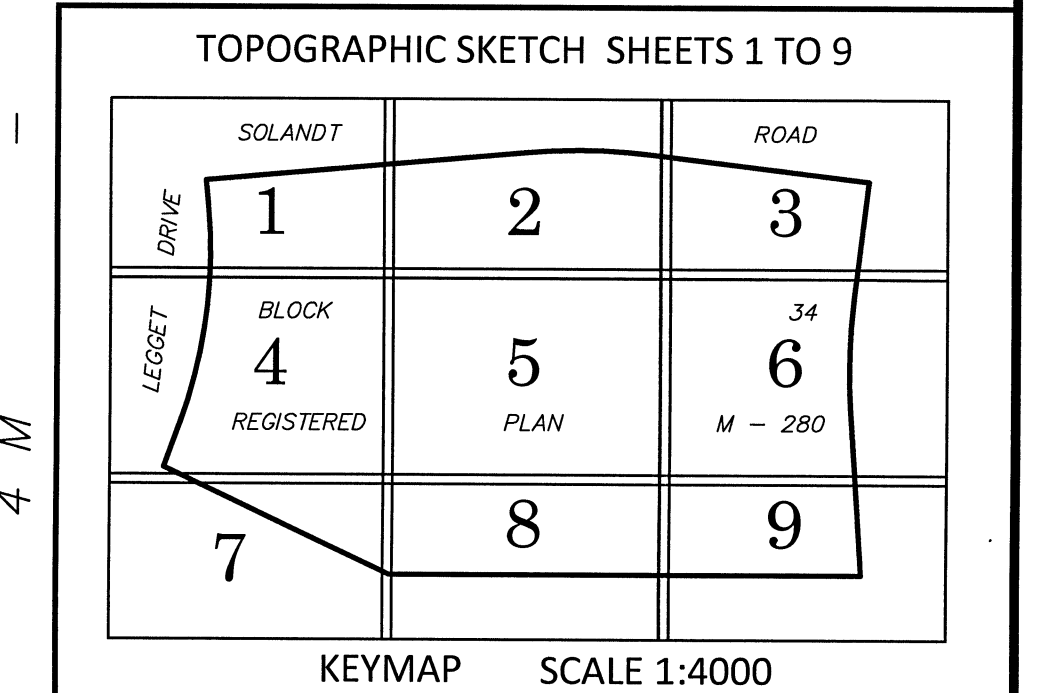
Metric Note
 Distances and coordinates on this plan are in metres and can be converted to feet by dividing by 0.3048.

Distance Note
 Distances shown on this plan are ground distances and can be converted to grid distances by multiplying by the combined scale factor of 0.99992.

Bearing Note
 Bearings hereon are grid bearings derived from the Can-Net Real Time Network and are referred to the Central Meridian of MTM Zone 9 (76°30' West Longitude) Nad-83 (Original).

For bearing comparisons, a rotation of 0°00'55" counter-clockwise was applied to bearings on P1, P2.

Boundary Note
 This Plan is to be read in conjunction with a Topographic Sketch, Sheets 1 to 9 dated October 19, 2021 (FSD Ref. 524-21)



- Notes & Legend**
- Denotes
- Survey Monument Planted
 - Survey Monument Found
 - Standard Iron Bar
 - Short Standard Iron Bar
 - Iron Bar
 - Concrete Pin
 - CP
 - (Wit)
 - Witness
 - Measured
 - Plan 4R-29533
 - Plan by (857) dated October 3, 2012 (Ref. No.42-M-280)
 - C/L
 - Centreline
 - CLF
 - Chain Link Fence

WARNING NO PERSON MAY COPY, REPRODUCE, DISTRIBUTE OR ALTER THIS PLAN IN WHOLE OR IN PART WITHOUT THE WRITTEN PERMISSION OF FARLEY, SMITH & DENIS SURVEYING LTD.
 © FARLEY, SMITH & DENIS SURVEYING LTD., 2021.

Surveyor's Certificate
 I certify that:
 1. This survey and plan are correct and in accordance with the Surveys Act, the Surveyors Act and the Regulations made under them.
 2. The survey was completed on the 18th day of October, 2021.

Date: *Oct. 19/21*
 Daniel Robinson
 Ontario Land Surveyor

ASSOCIATION OF ONTARIO LAND SURVEYORS
 PLAN SUBMISSION FORM
 V-15630

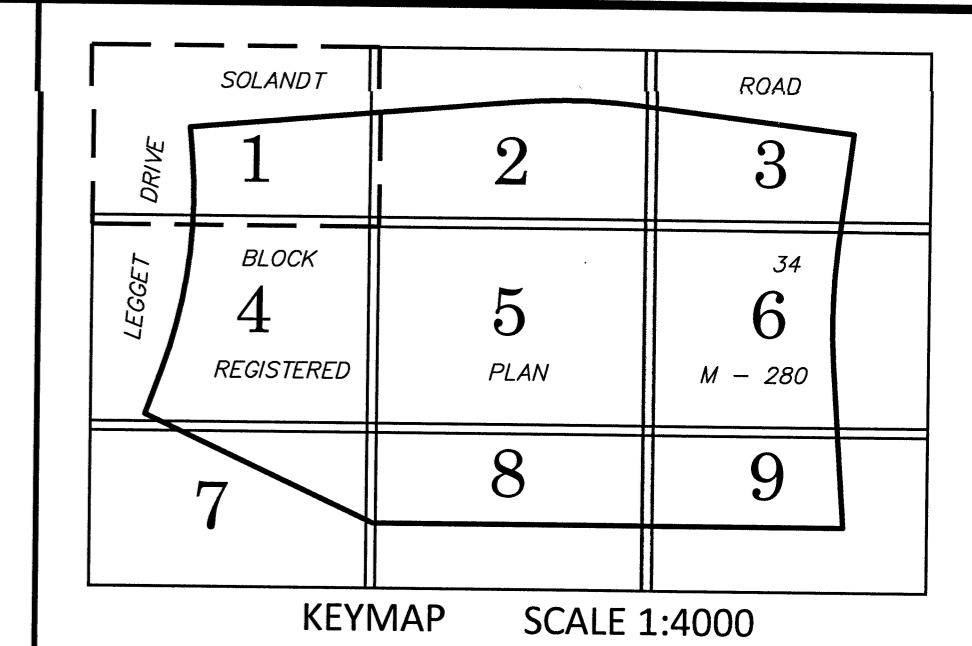
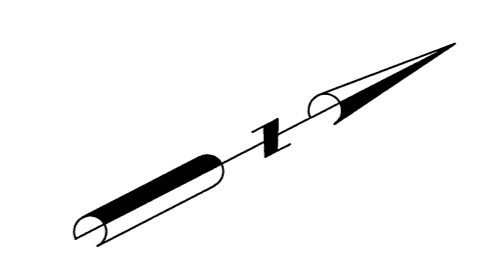
THIS PLAN IS NOT VALID UNLESS IT IS AN EMBOSSED ORIGINAL COPY ISSUED BY THE SURVEYOR
 In accordance with Regulation 1026, Section 29 (3).

FARLEY, SMITH & DENIS SURVEYING LTD.

ONTARIO LAND SURVEYORS
 CANADA LAND SURVEYORS

Unit 275, 30 COLONNADE ROAD, OTTAWA, ONTARIO K2E 7J6
 TEL. (613) 727-8226 E-mail: fdsurveys@bellnet.ca

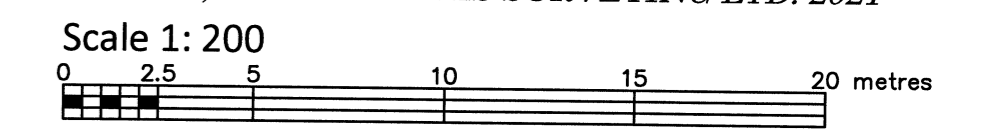
FILE No.: 524-21



TOPOGRAPHIC SKETCH OF SHEET 1 OF 9

PART OF BLOCKS 33 AND 34 REGISTERED PLAN M-280 CITY OF OTTAWA

FARLEY, SMITH & DENIS SURVEYING LTD. 2021



Metric Note
Distances and coordinates on this plan are in metres and can be converted to feet by dividing by 0.3048.

Distance Note
Distances shown on this plan are ground distances and can be converted to grid distances by multiplying by the combined scale factor of 0.99992.

Boundary Note
This Sketch is to be read in conjunction with a Surveyor's Real Property Report dated October 19, 2021 (FSD Ref: 524-21)

Elevation Notes

- Elevations shown are geodetic and are referred to Geodetic Datum CGVD-1978.
- It is the responsibility of the user of this information to verify that the job benchmark has not been altered or disturbed and that its relative elevation and description agrees with the information shown on this drawing.

Utility Notes

- This drawing cannot be accepted as acknowledging all of the utilities and it will be the responsibility of the user to contact the respective utility authorities for confirmation.
- Only visible surface utilities were located.
- Underground utility data compiled from City of Ottawa utility sheet reference: D-1-04, D-1-05, D-1-11, C-1-18, C-1-23, C-1-24, C-1-28, C-1-29, 9648, 11609, 13508.
- Sanitary and storm sewer grades and inverts were compiled from: Field measurement and City of Ottawa Utility Sheets.
- A field location of underground plant by the pertinent utility authority is mandatory before any work involving breaking ground, probing, excavating etc.

Caution Note

- This is NOT a Plan of Survey and shall not be used except for the purpose indicated in the title block.
- This Sketch is protected by Copyright ©.

Notes & Legend

○ MH-ST	Denotes	Maintenance Hole (Storm)
○ MH-S		Maintenance Hole (Sanitary)
○ MH-R		Maintenance Hole (Rogers)
○ MH-B		Maintenance Hole (Bell)
○ MH-T		Maintenance Hole (Traffic)
○ MH-H		Maintenance Hole (Hydro)
○ MH-W		Maintenance Hole (Water)
○ MH-A		Maintenance Hole (Allstream)
○ MH		Maintenance Hole (Unidentified)
— ST		Underground Storm Sewer
— S		Underground Sanitary Sewer
— W		Underground Water
— P		Underground Hydro
— G		Underground Gas
— B		Underground Bell / Telus
— TV		Underground Rogers / Allstream
— OW		Overhead Wires
○ VC		Valve Chamber (Watermain)
○ TL		Traffic Light
○ UP		Utility Pole
○ AN		Anchor
○ LS		Light Standard
□ CB		Catch Basin
○ FH		Fire Hydrant
○ TB-C		Cable Terminal Box
○ TB-B		Bell Terminal Box
○ TB-T		Telus Terminal Box
○ FP		Flag Pole
EC		Electrical Charger
H-T		Hydro Transformer
Inv.		Invert
T/G		Top of Grate
U/Eave		Underside of Eave
T/Found		Top of Foundation
EL		Elevation
○ CL		Centreline
○ WV		Water Valve
○ GM		Gas Meter
○ B		Bollard
○ S		Sign
○		Diameter
CRW		Concrete Retaining Wall
SRW		Stone Retaining Wall
+55.00		Location of Elevations
+65.00		Top of Concrete Curb / Retaining Wall Elevation
○		Deciduous Tree - The Symbol shown denotes location and trunk diameter only. Size of its' root system/overhead canopy may be smaller/larger than the symbol size depicted on this plan.
○		Coniferous Tree - The Symbol shown denotes location and trunk diameter only. Size of its' root system/overhead canopy may be smaller/larger than the symbol size depicted on this plan.

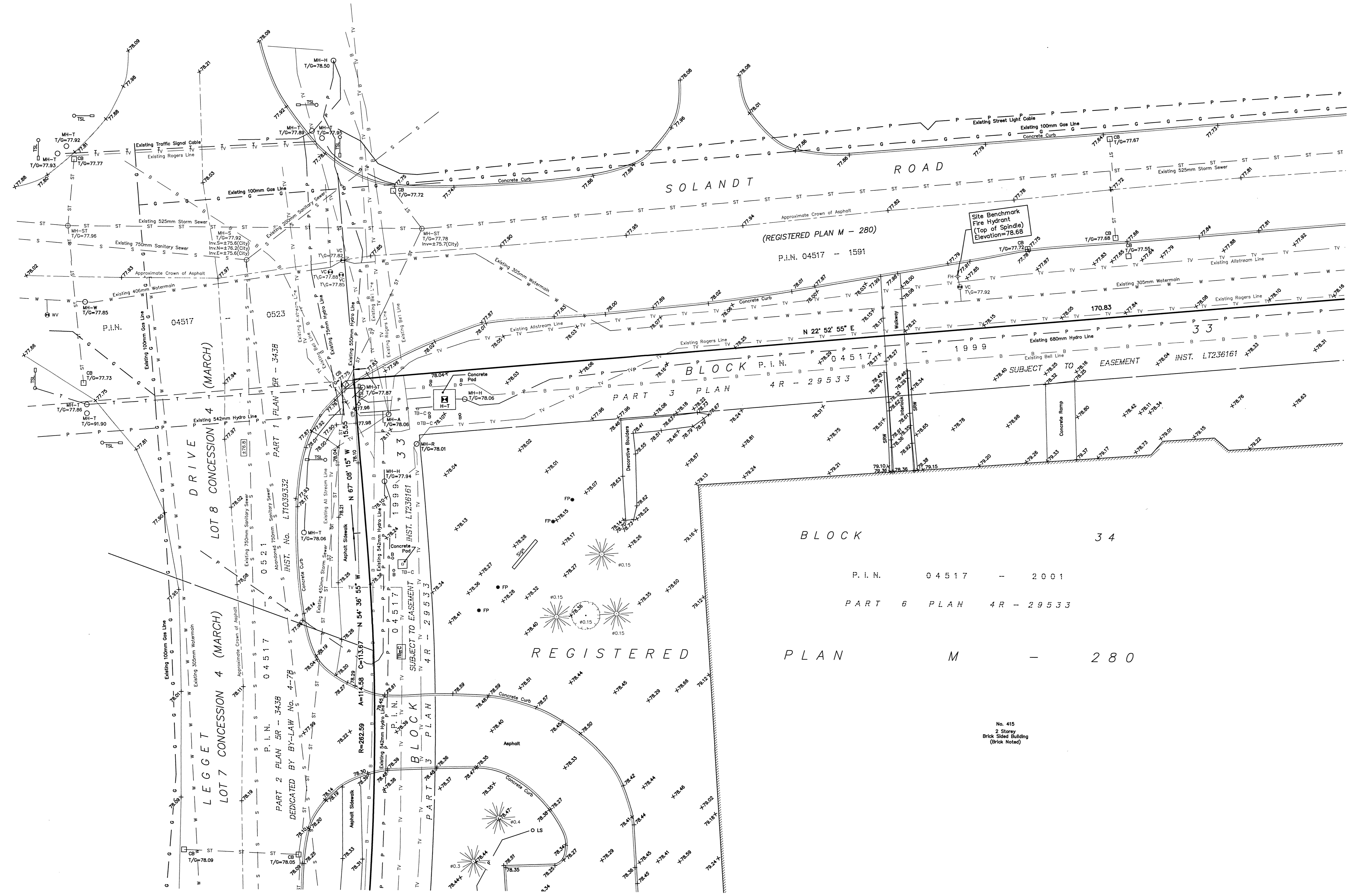
WARNING: NO PERSON MAY COPY, REPRODUCE, DISTRIBUTE OR ALTER THIS PLAN IN WHOLE OR IN PART WITHOUT THE WRITTEN PERMISSION OF FARLEY, SMITH & DENIS SURVEYING LTD. © FARLEY, SMITH & DENIS SURVEYING LTD., 2021.

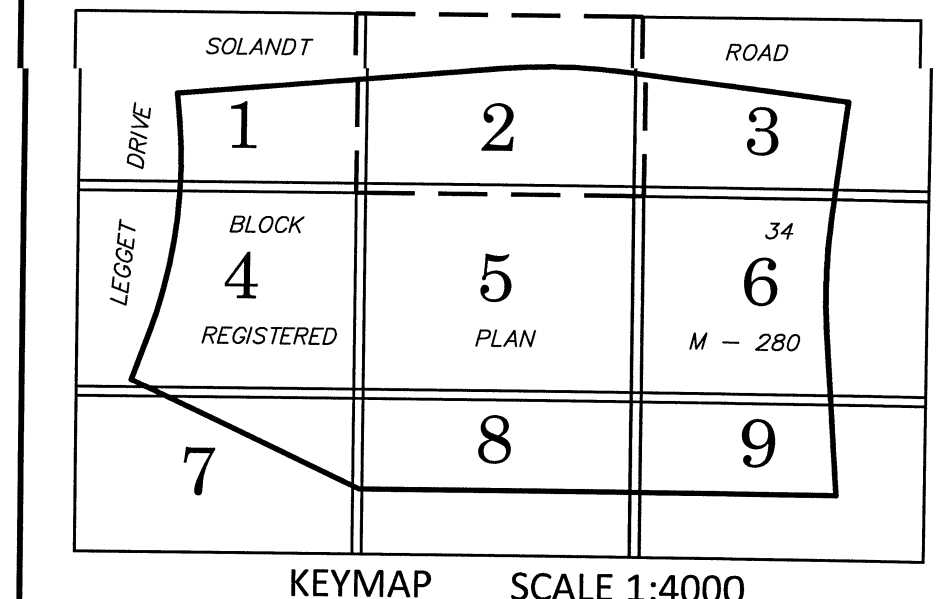
Fieldwork was completed on the 18th day of October, 2021.
 Date: Oct. 19/21
 Daniel Robinson
 Ontario Land Surveyor

FARLEY, SMITH & DENIS SURVEYING LTD.

ONTARIO LAND SURVEYORS
CANADA LAND SURVEYORS

Unit 275, 30 COLONNADE ROAD, OTTAWA, ONTARIO K2E 7J6
 TEL: (613) 727-8226 E-mail: fsdsurveys@bellnet.ca



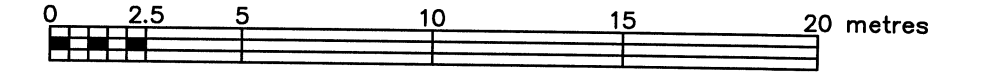


TOPOGRAPHIC SKETCH OF SHEET 2 OF 9

PART OF BLOCKS 33 AND 34 REGISTERED PLAN M-280 CITY OF OTTAWA

FARLEY, SMITH & DENIS SURVEYING LTD. 2021

Scale 1: 200



Metric Note

Distances and coordinates on this plan are in metres and can be converted to feet by dividing by 0.3048.

Distance Note

Distances shown on this plan are ground distances and can be converted to grid distances by multiplying by the combined scale factor of 0.99992.

Boundary Note

This Sketch is to be read in conjunction with a Surveyor's Real Property Report dated Ditzkeher 35, 2021 (FSD Rep. 524-21)

Elevation Notes

- Elevations shown are geodetic and are referred to Geodetic Datum CGVD-1928 :1978.
- It is the responsibility of the user of this information to verify that the job benchmark has not been altered or disturbed and that its relative elevation and description agrees with the information shown on this drawing.

Utility Notes

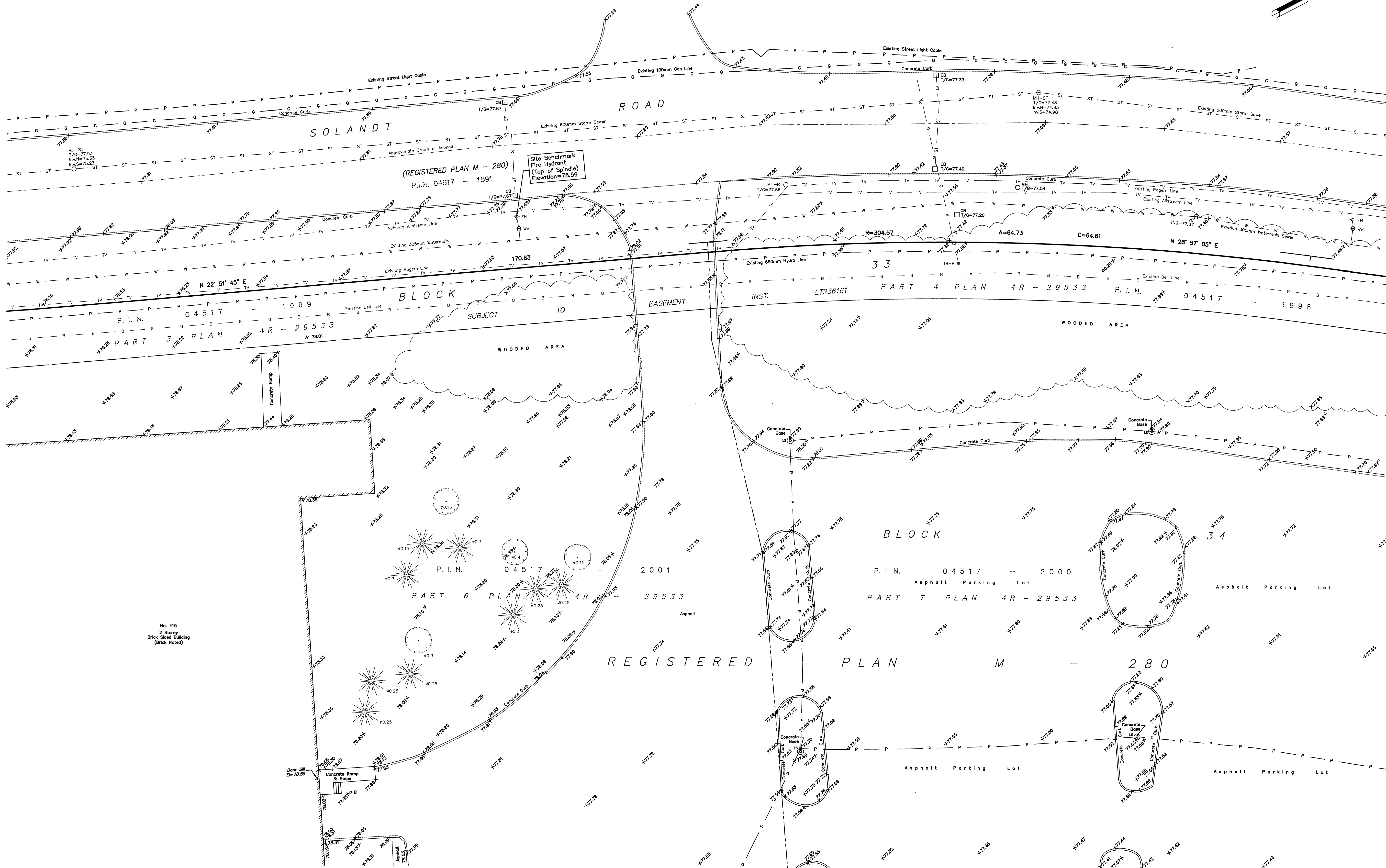
- This drawing cannot be accepted as acknowledging all of the utilities and it will be the responsibility of the user to contact the respective utility authorities for confirmation.
- Only visible surface utilities were located.
- Underground utility data compiled from City of Ottawa utility sheet reference: D-L-04, D-L-05, D-L-11, C-L-18, C-L-23, C-L-24, C-L-28, C-L-29, 9648, 11609, 13508.
- Sanitary and storm sewer grades and inverts were compiled from: Field measurement and City of Ottawa Utility Sheets.
- A field location of underground plant by the pertinent utility authority is mandatory before any work involving breaking ground, probing, excavating etc.

Caution Note

- This is NOT a Plan of Survey and shall not be used except for the purpose indicated in the title block.
- This Sketch is protected by Copyright ©.

Notes & Legend

- MH-ST Denotes Maintenance Hole (Storm)
- MH-S " Maintenance Hole (Sanitary)
- MH-R " Maintenance Hole (Rogers)
- MH-B " Maintenance Hole (Bell)
- MH-T " Maintenance Hole (Traffic)
- MH-H " Maintenance Hole (Hydro)
- MH-W " Maintenance Hole (Water)
- MH-A " Maintenance Hole (Allstream)
- MH " Maintenance Hole (Unidentified)
- ST — " Underground Storm Sewer
- S — " Underground Sanitary Sewer
- W — " Underground Water
- P — " Underground Hydro
- G — " Underground Gas
- B — " Underground Bell / Telus
- TV — " Underground Rogers / Allstream
- OW — " Overhead Wires
- ⊙ VC " Valve Chamber (Watermain)
- ⊙ TL " Traffic Light
- ⊙ UP " Utility Pole
- ⊙ AN " Anchor
- ⊙ LS " Light Standard
- ⊙ CB " Catch Basin
- ⊙ FH " Fire Hydrant
- ⊙ TB-C " Cable Terminal Box
- ⊙ TB-B " Bell Terminal Box
- ⊙ TB-T " Telus Terminal Box
- ⊙ FP " Flag Pole
- ⊙ EC " Electrical Charger
- ⊙ H-T " Hydro Transformer
- ⊙ Inv " Invert
- ⊙ T/G " Top of Grate
- ⊙ U/Eave " Underside of Eave
- ⊙ Tofdn " Top of Foundation
- ⊙ El " Elevation
- ⊙ C/L " Centreline
- ⊙ W/V " Water Valve
- ⊙ M " Gas Meter
- ⊙ B " Bollard
- ⊙ S " Sign
- ⊙ D " Diameter
- ⊙ CRW " Concrete Retaining Wall
- ⊙ SRW " Stone Retaining Wall
- ⊙ +65.00 " Location of Elevations
- ⊙ +65.00 " Top of Concrete Curb / Retaining Wall Elevation
- ⊙ +65.00 " Deciduous Tree - The Symbol shown denotes location and trunk diameter only. Size of its root system/overhead canopy may be smaller/larger than the symbol size depicted on this plan.
- ⊙ " Coniferous Tree - The Symbol shown denotes location and trunk diameter only. Size of its root system/overhead canopy may be smaller/larger than the symbol size depicted on this plan.



WARNING: NO PERSON MAY COPY, REPRODUCE, DISTRIBUTE OR ALTER THIS PLAN IN WHOLE OR IN PART WITHOUT THE WRITTEN PERMISSION OF FARLEY, SMITH & DENIS SURVEYING LTD. © FARLEY, SMITH & DENIS SURVEYING LTD., 2021.

Fieldwork was completed on the 18th day of October, 2021.

Daniel Robinson
Date
Daniel Robinson
Ontario Land Surveyor

FARLEY, SMITH & DENIS SURVEYING LTD.

ONTARIO LAND SURVEYORS
CANADA LAND SURVEYORS

Unit 275, 30 COLONNADE ROAD, OTTAWA, ONTARIO K2E 7J6
TEL: (613) 727-8226 E-mail: fdsurvey@bellnet.ca

	SOLANDT		ROAD
DRIVE	1	2	3
LEGGET	BLOCK 4 REGISTERED	5 PLAN	34 6 M - 280
	7	8	9

KEYMAP SCALE 1:4000

TOPOGRAPHIC SKETCH OF SHEET 3 OF 9

PART OF BLOCKS 33 AND 34 REGISTERED PLAN M-280 CITY OF OTTAWA

FARLEY, SMITH & DENIS SURVEYING LTD. 2021

Scale 1: 200
0 2.5 5 10 15 20 metres

Metric Note
Distances and coordinates on this plan are in metres and can be converted to feet by dividing by 0.3048.

Distance Note
Distances shown on this plan are ground distances and can be converted to grid distances by multiplying by the combined scale factor of 0.99992.

Boundary Note
This Sketch is to be read in conjunction with a Surveyor's Real Property Report dated October 19, 2021 (FSD Ref. 524-21)

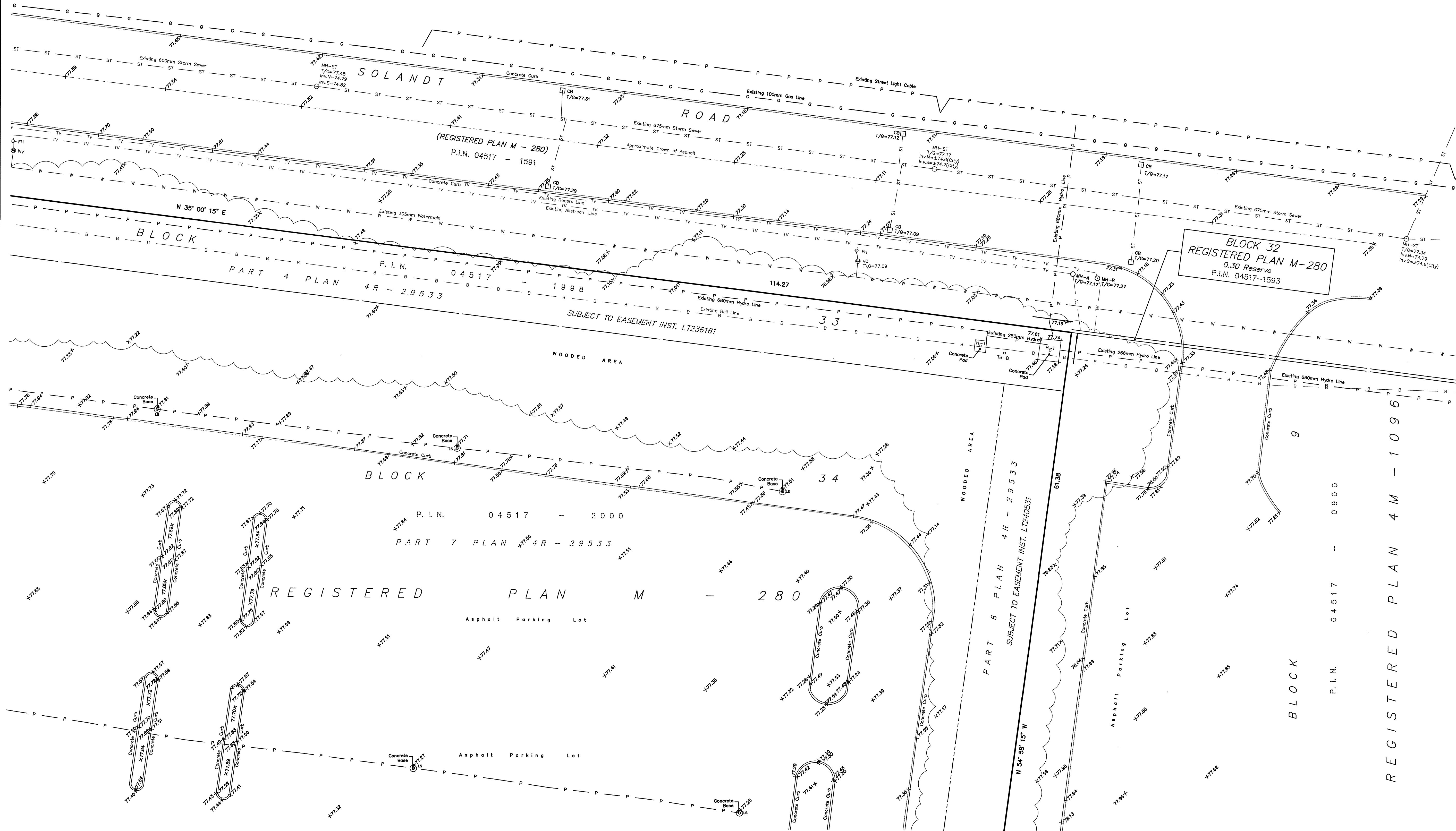
Elevation Notes
1. Elevations shown are geodetic and are referred to Geodetic Datum CGVD-1978.
2. It is the responsibility of the user of this information to verify that the job benchmark has not been altered or disturbed and that its relative elevation and description agrees with the information shown on this drawing.

Utility Notes
1. This drawing cannot be accepted as acknowledging all of the utilities and it will be the responsibility of the user to contact the respective utility authorities for confirmation.
2. Only visible surface utilities were located.
3. Underground utility data compiled from City of Ottawa utility sheet reference: D-L-04, D-L-05, D-L-11, C-L-18, C-L-23, C-L-24, C-L-28, C-L-29, 9648, 11609, 13508.
4. Sanitary and storm sewer grades and inverts were compiled from: Field measurement and City of Ottawa Utility Sheets.
5. A field location of underground plant by the pertinent utility authority is mandatory before any work involving breaking ground, probing, excavating etc.

Caution Note
a) This is NOT a Plan of Survey and shall not be used except for the purpose indicated in the title block.
b) This Sketch is protected by Copyright ©.

Notes & Legend

○ MI-ST	Denotes Maintenance Hole (Storm)
○ MI-S	Maintenance Hole (Sanitary)
○ MI-R	Maintenance Hole (Rogers)
○ MI-B	Maintenance Hole (Bell)
○ MI-T	Maintenance Hole (Traffic)
○ MI-H	Maintenance Hole (Hydro)
○ MI-W	Maintenance Hole (Water)
○ MI-A	Maintenance Hole (Allstream)
○ MI-U	Maintenance Hole (Unidentified)
---	Underground Storm Sewer
---	Underground Sanitary Sewer
---	Underground Water
---	Underground Hydro
---	Underground Gas
---	Underground Bell / Telus
---	Underground Rogers / Allstream
---	Overhead Wires
○ VC	Valve Chamber (Watermain)
○ TL	Traffic Light
○ UP	Utility Pole
○ AN	Anchor
○ LS	Light Standard
○ FH	Fire Hydrant
○ TB-C	Cable Terminal Box
○ TB-B	Bell Terminal Box
○ TB-T	Telus Terminal Box
○ FP	Flag Pole
EC	Electrical Charger
H-T	Hydro Transformer
Invt.	Invert
T/G	Top of Grate
U/Eave	Underside of Eave
TpFdn	Top of Foundation
EL	Elevation
C/L	Centreline
○ WV	Water Valve
○ GM	Gas Meter
○ S	Bollard
△ S	Sign
○	Diameter
CRW	Concrete Retaining Wall
SRW	Stone Retaining Wall
+65.00	Location of Elevations
+65.00	Top of Concrete Curb / Retaining Wall Elevation
○	Deciduous Tree - The Symbol shown denotes location and trunk diameter only. Size of its' root system/overhead canopy may be smaller/larger than the symbol size depicted on this plan.
○	Coniferous Tree - The Symbol shown denotes location and trunk diameter only. Size of its' root system/overhead canopy may be smaller/larger than the symbol size depicted on this plan.

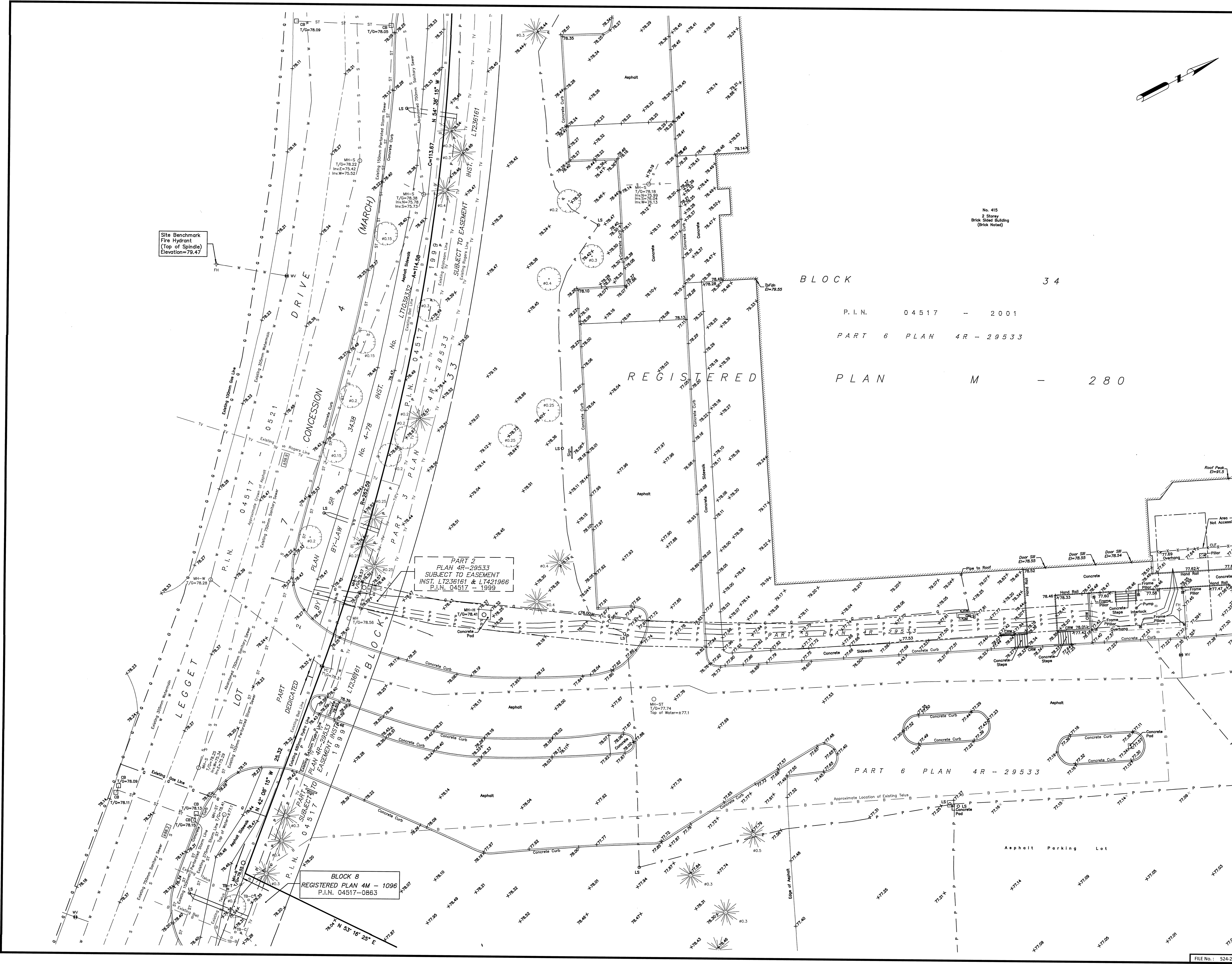


WARNING NO PERSON MAY COPY, REPRODUCE, DISTRIBUTE OR ALTER THIS PLAN IN WHOLE OR IN PART WITHOUT THE WRITTEN PERMISSION OF FARLEY, SMITH & DENIS SURVEYING LTD. © FARLEY, SMITH & DENIS SURVEYING LTD., 2021.

Fieldwork was completed on the 18th day of October, 2021.
[Signature]
Date
[Signature]
Daniel Robinson
Ontario Land Surveyor

FARLEY, SMITH & DENIS SURVEYING LTD.

ONTARIO LAND SURVEYORS
CANADA LAND SURVEYORS
Unit 275, 30 COLONNADE ROAD, OTTAWA, ONTARIO K2E 7J6
TEL. (613) 727-8226 E-mail: fdsurveys@bellnet.ca



DRIVE	1	2	3
LEGGET	4	5	34
	REGISTERED	PLAN	M - 280
	7	8	9

KEYMAP SCALE 1:4000

TOPOGRAPHIC SKETCH OF SHEET 4 OF 9

PART OF BLOCKS 33 AND 34 REGISTERED PLAN M-280 CITY OF OTTAWA

FARLEY, SMITH & DENIS SURVEYING LTD. 2021

Scale 1: 200
0 5 10 15 20 metres

Metric Note
Distances and coordinates on this plan are in metres and can be converted to feet by dividing by 0.3048.

Distance Note
Distances shown on this plan are ground distances and can be converted to grid distances by multiplying by the combined scale factor of 0.99992.

Boundary Note
This Sketch is to be read in conjunction with a Surveyor's Real Property Report dated October 19, 2021 (FSD Ref. 524-21)

Elevation Notes
1. Elevations shown are geodetic and are referred to Geodetic Datum CGVD-1928 :1978.
2. It is the responsibility of the user of this information to verify that the job benchmark has not been altered or disturbed and that its relative elevation and description agrees with the information shown on this drawing.

Utility Notes
1. This drawing cannot be accepted as acknowledging all of the utilities and it will be the responsibility of the user to contact the respective utility authorities for confirmation.
2. Only visible surface utilities were located.
3. Underground utility data compiled from City of Ottawa utility sheet reference: D-L-04, D-L-05, D-L-11, C-L-18, C-L-23, C-L-24, C-L-28, C-L-29, 9648, 11609, 13508.
4. Sanitary and storm sewer grades and inverts were compiled from: Field measurement and City of Ottawa Utility Sheets.
5. A field location of underground plant by the pertinent utility authority is mandatory before any work involving breaking ground, probing, excavating etc.

Caution Note
a) This is NOT a Plan of Survey and shall not be used except for the purpose indicated in the title block.
b) This Sketch is protected by Copyright ©.

Notes & Legend

○ MH-ST	Denotes Maintenance Hole (Storm)
○ MH-S	Maintenance Hole (Sanitary)
○ MH-R	Maintenance Hole (Rogers)
○ MH-B	Maintenance Hole (Bell)
○ MH-T	Maintenance Hole (Traffic)
○ MH-H	Maintenance Hole (Hydro)
○ MH-W	Maintenance Hole (Water)
○ MH-U	Maintenance Hole (Unidentified)
○ MH	Maintenance Hole
— ST	Underground Storm Sewer
— S	Underground Sanitary Sewer
— W	Underground Water
— P	Underground Hydro
— G	Underground Gas
— B	Underground Bell / Telus
— TV	Underground Rogers / Allstream
— OW	Overhead Wires
○ VC	Valve Chamber (Watermain)
○ TSL	Traffic Light
○ UP	Utility Pole
○ AN	Anchor
○ LS	Light Standard
□ CB	Catch Basin
○ FH	Fire Hydrant
○ TB-C	Cable Terminal Box
○ TB-B	Bell Terminal Box
○ TB-T	Telus Terminal Box
○ FP	Flag Pole
○ EC	Electrical Charger
○ H-T	Hydro Transformer
Inv.	Invert
T/G	Top of Grate
U/Eave	Underside of Eave
TpFdn	Top of Foundation
EJ	Elevation
CL	Centreline
○ WV	Water Valve
○ GM	Gas Meter
○ B	Bollard
○ S	Sign
○ Ø	Diameter
○ CRW	Concrete Retaining Wall
○ SRW	Stone Retaining Wall
+65.00	Location of Elevations
+65.00	Top of Concrete Curb / Retaining Wall Elevation
○	Deciduous Tree - The Symbol shown denotes location and trunk diameter only. Size of its' root system/overhead canopy may be smaller/larger than the symbol size depicted on this plan.
○	Coniferous Tree - The Symbol shown denotes location and trunk diameter only. Size of its' root system/overhead canopy may be smaller/larger than the symbol size depicted on this plan.

WARNING: NO PERSON MAY COPY, REPRODUCE, DISTRIBUTE OR ALTER THIS PLAN IN WHOLE OR IN PART WITHOUT THE WRITTEN PERMISSION OF FARLEY, SMITH & DENIS SURVEYING LTD. © FARLEY, SMITH & DENIS SURVEYING LTD., 2021.

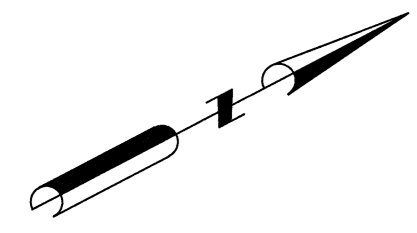
Fieldwork was completed on the 18th day of October, 2021.
Date: *[Signature]*
Daniel Robinson
Ontario Land Surveyor

FARLEY, SMITH & DENIS SURVEYING LTD.

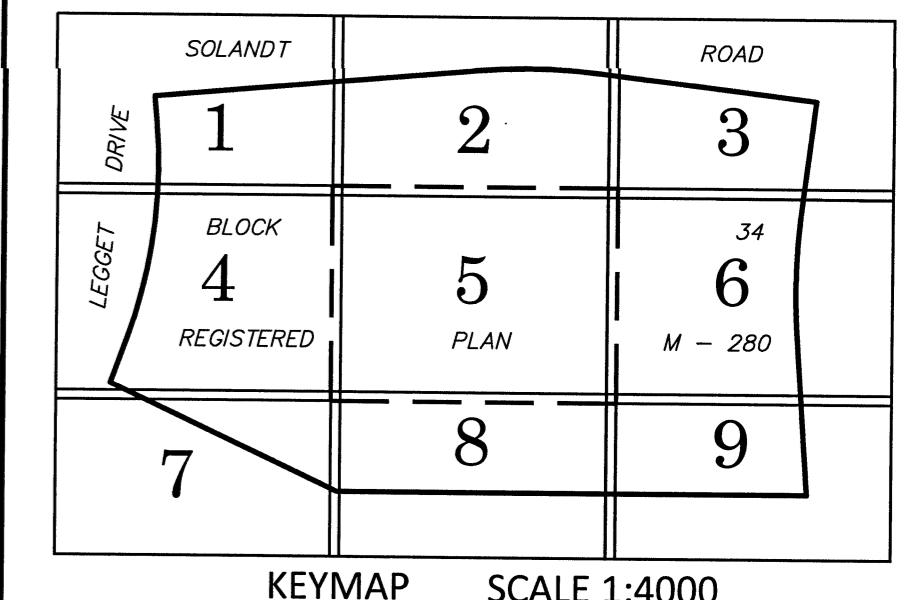
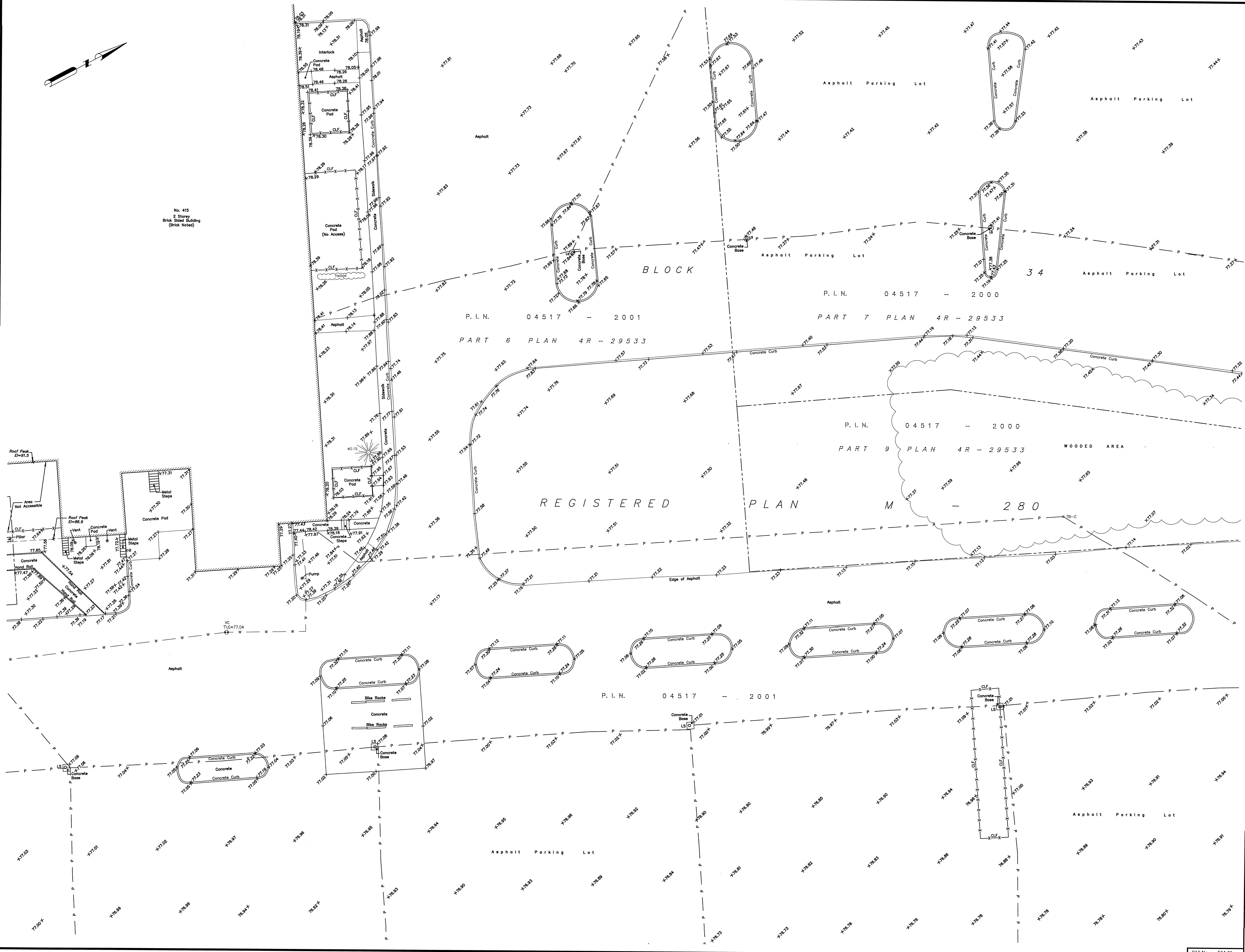
ONTARIO LAND SURVEYORS
CANADA LAND SURVEYORS

Unit 275, 30 COLONNADE ROAD, OTTAWA, ONTARIO K2E 7J6
TEL: (613) 727-8226 E-mail: fdsurveys@bell.net.ca

FILE No.: 524-21



No. 415
2 Storey
Brick Sided Building
(Brick noted)



TOPOGRAPHIC SKETCH OF SHEET 5 OF 9
PART OF BLOCKS 33 AND 34
REGISTERED PLAN M-280
CITY OF OTTAWA

FARLEY, SMITH & DENIS SURVEYING LTD. 2021
Scale 1: 200
0 2.5 5 10 15 20 metres

Metric Note
Distances and coordinates on this plan are in metres and can be converted to feet by dividing by 0.3048.

Distance Note
Distances shown on this plan are ground distances and can be converted to grid distances by multiplying by the combined scale factor of 0.99992.

Boundary Note
This Sketch is to be read in conjunction with a Surveyor's Real Property Report dated October 19, 2021 (FSD Ref. 524-21)

Elevation Notes
1. Elevations shown are geodetic and are referred to Geodetic Datum CGVD-1928 -1978.
2. It is the responsibility of the user of this information to verify that the job benchmark has not been altered or disturbed and that its relative elevation and description agrees with the information shown on this drawing.

Utility Notes
1. This drawing cannot be accepted as acknowledging all of the utilities and it will be the responsibility of the user to contact the respective utility authorities for confirmation.
2. Only visible surface utilities were located.
3. Underground utility data compiled from City of Ottawa utility sheet reference: D-L-04, D-L-05, D-L-11, C-L-18, C-L-23, C-L-24, C-L-28, C-L-29, 9648, 11609, 13508.
4. Sanitary and storm sewer grades and inverts were compiled from: Field measurement and City of Ottawa Utility Sheets.
5. A field location of underground plant by the pertinent utility authority is mandatory before any work involving breaking ground, probing, excavating etc.

Caution Note
a) This is NOT a Plan of Survey and shall not be used except for the purpose indicated in the title block.
b) This Sketch is protected by Copyright ©.

Notes & Legend

○ MH-ST	Denotes Maintenance Hole (Storm)
○ MH-S	Maintenance Hole (Sanitary)
○ MH-R	Maintenance Hole (Rogers)
○ MH-B	Maintenance Hole (Bell)
○ MH-T	Maintenance Hole (Traffic)
○ MH-H	Maintenance Hole (Hydro)
○ MH-W	Maintenance Hole (Water)
○ MH-A	Maintenance Hole (Allstream)
○ MH	Maintenance Hole (Unidentified)
— ST	Underground Storm Sewer
— S	Underground Sanitary Sewer
— W	Underground Water
— P	Underground Hydro
— G	Underground Gas
— B	Underground Bell / Telus
— TV	Underground Rogers / Allstream
— OW	Overhead Wires
⊙ VC	Valve Chamber (Watermain)
⊙ TSL	Traffic Light
⊙ UP	Utility Pole
⊙ AN	Anchor
⊙ LS	Light Standard
⊙ CB	Catch Basin
⊙ FH	Fire Hydrant
⊙ TB-C	Cable Terminal Box
⊙ TB-B	Bell Terminal Box
⊙ TB-T	Telus Terminal Box
⊙ FP	Flag Pole
⊙ EC	Electrical Charger
⊙ H-T	Hydro Transformer
Inv.	Invert
T/G	Top of Grate
U/Eave	Underside of Eave
Tr/Fdn	Top of Foundation
Elev.	Elevation
C/L	Centreline
⊙ WV	Water Valve
⊙ GM	Gas Meter
⊙ B	Bollard
⊙ S	Sign
∅	Diameter
CRW	Concrete Retaining Wall
SRW	Stone Retaining Wall
+ 65.00	Location of Elevations
+ 65.00	Top of Concrete Curb / Retaining Wall Elevation
⊙	Deciduous Tree - The Symbol shown denotes location and trunk diameter only. Size of its' root system/overhead canopy may be smaller/larger than the symbol size depicted on this plan.
⊙	Coniferous Tree - The Symbol shown denotes location and trunk diameter only. Size of its' root system/overhead canopy may be smaller/larger than the symbol size depicted on this plan.

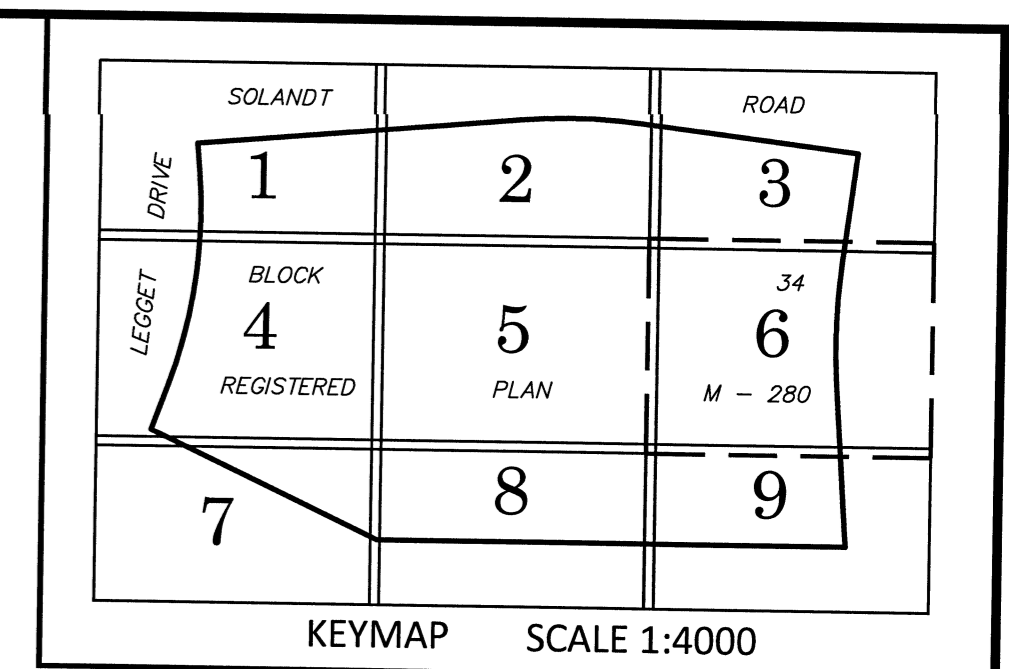
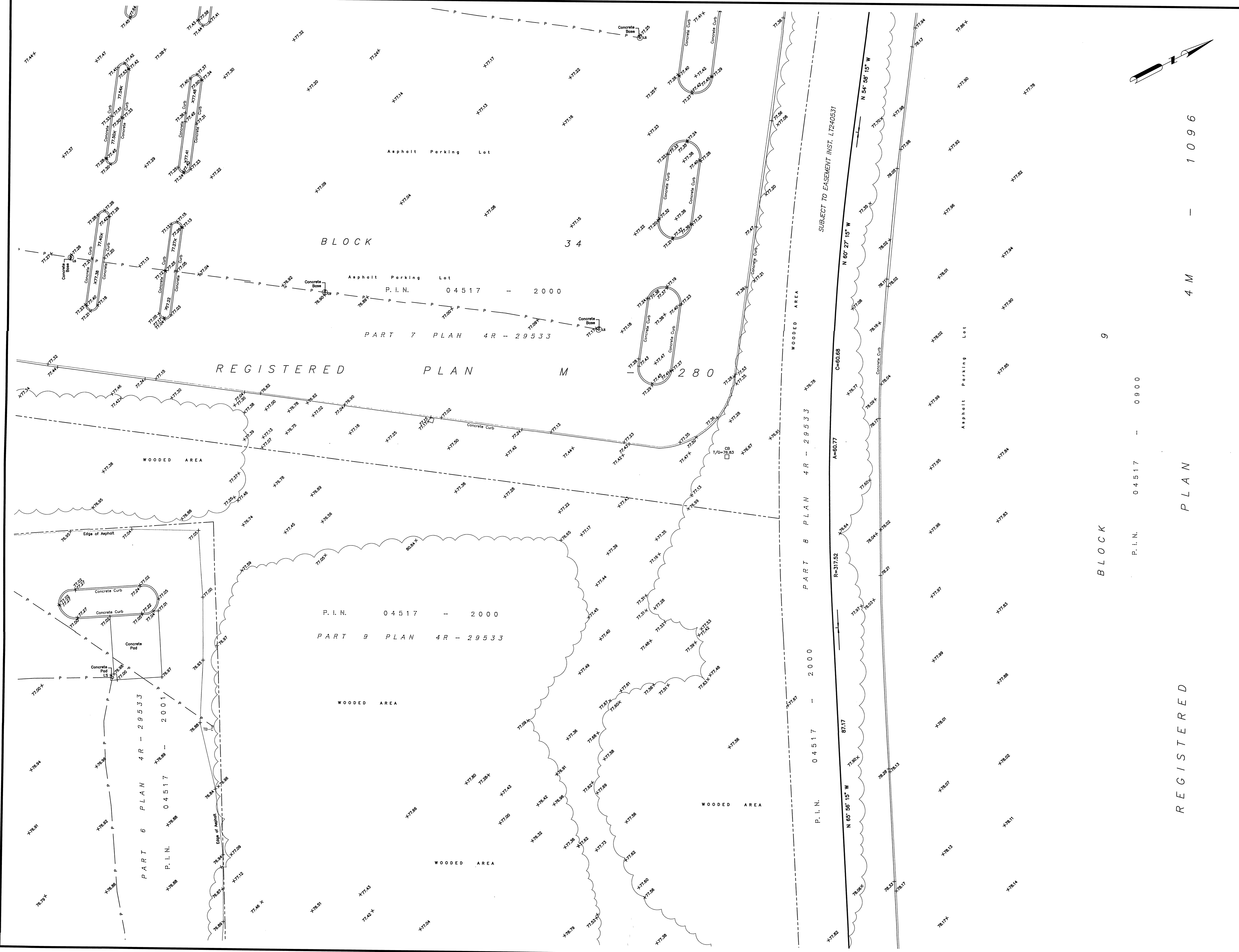
WARNING: NO PERSON MAY COPY, REPRODUCE, DISTRIBUTE OR ALTER THIS PLAN IN WHOLE OR IN PART WITHOUT THE WRITTEN PERMISSION OF FARLEY, SMITH & DENIS SURVEYING LTD.
© FARLEY, SMITH & DENIS SURVEYING LTD., 2021

Fieldwork was completed on the 18th day of October, 2021.

Daniel Robinson
Date: Daniel Robinson
Ontario Land Surveyor

FARLEY, SMITH & DENIS SURVEYING LTD.
ONTARIO LAND SURVEYORS
CANADA LAND SURVEYORS
Unit 275, 30 COLONNADE ROAD, OTTAWA, ONTARIO K2E 7J6
TEL: (613) 727-8226 E-mail: fdsurvey@bellnet.ca

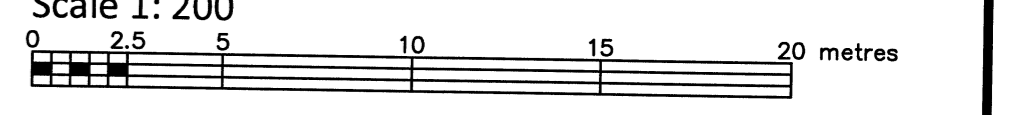
TOPD 28026_sheets5



TOPOGRAPHIC SKETCH OF SHEET 6 OF 9

PART OF BLOCKS 33 AND 34 REGISTERED PLAN M-280 CITY OF OTTAWA

FARLEY, SMITH & DENIS SURVEYING LTD. 2021



Metric Note
Distances and coordinates on this plan are in metres and can be converted to feet by dividing by 0.3048.

Distance Note
Distances shown on this plan are ground distances and can be converted to grid distances by multiplying by the combined scale factor of 0.99992.

Boundary Note
This Sketch is to be read in conjunction with a Surveyor's Real Property Report dated October 19, 2021 (FSD Ref. 524-21)

Elevation Notes
1. Elevations shown are geodetic and are referred to Geodetic Datum CGVD-1928 :1978.
2. It is the responsibility of the user of this information to verify that the job benchmark has not been altered or disturbed and that its relative elevation and description agrees with the information shown on this drawing.

Utility Notes
1. This drawing cannot be accepted as acknowledging all of the utilities and it will be the responsibility of the user to contact the respective utility authorities for confirmation.
2. Only visible surface utilities were located.
3. Underground utility data compiled from City of Ottawa utility sheet reference: D-L-04, D-L-05, D-L-11, C-L-18, C-L-23, C-L-24, C-L-28, C-L-29, 9648, 11609, 13508.
4. Sanitary and storm sewer grades and inverts were compiled from: Field measurement and City of Ottawa Utility Sheets.
5. A field location of underground plant by the pertinent utility authority is mandatory before any work involving breaking ground, probing, excavating etc.

Caution Note
a) This is NOT a Plan of Survey and shall not be used except for the purpose indicated in the title block.
b) This Sketch is protected by Copyright ©.

Notes & Legend

○ MH-ST	Denotes Maintenance Hole (Storm)
○ MH-S	Maintenance Hole (Sanitary)
○ MH-R	Maintenance Hole (Rogers)
○ MH-B	Maintenance Hole (Bell)
○ MH-T	Maintenance Hole (Traffic)
○ MH-H	Maintenance Hole (Hydro)
○ MH-W	Maintenance Hole (Water)
○ MH-A	Maintenance Hole (Allstream)
○ MH	Maintenance Hole (Unidentified)
---	Underground Storm Sewer
---	Underground Sanitary Sewer
---	Underground Water
---	Underground Hydro
---	Underground Gas
---	Underground Bell / Telus
---	Underground Rogers / Allstream
---	Overhead Wires
○ VC	Valve Chamber (Watermain)
○ TL	Traffic Light
○ UP	Utility Pole
○ AN	Anchor
○ LS	Light Standard
□ CB	Catch Basin
○ FH	Fire Hydrant
○ TB-C	Cable Terminal Box
○ TB-B	Bell Terminal Box
○ TB-T	Telus Terminal Box
○ FP	Flag Pole
EC	Electrical Charger
H-T	Hydro Transformer
Inv.	Invert
T/G	Top of Grate
U/Eave	Underside of Eave
TpFdn	Top of Foundation
El	Elevation
C/L	Centreline
○ WV	Water Valve
○ GM	Gas Meter
○ B	Bollard
△ S	Sign
○	Diameter
CRW	Concrete Retaining Wall
SRW	Stone Retaining Wall
+65.00	Location of Elevations
+65.00	Top of Concrete Curb / Retaining Wall Elevation
○	Deciduous Tree - The Symbol shown denotes location and trunk diameter only. Size of its' root system/overhead canopy may be smaller/larger than the symbol size depicted on this plan.
○	Coniferous Tree - The Symbol shown denotes location and trunk diameter only. Size of its' root system/overhead canopy may be smaller/larger than the symbol size depicted on this plan.

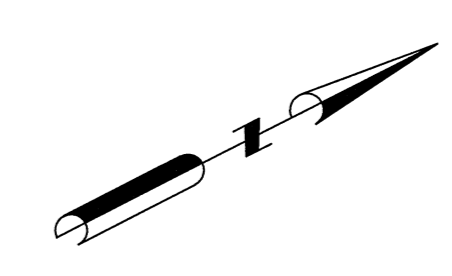
WARNING: NO PERSON MAY COPY, REPRODUCE, DISTRIBUTE OR ALTER THIS PLAN IN WHOLE OR IN PART WITHOUT THE WRITTEN PERMISSION OF FARLEY, SMITH & DENIS SURVEYING LTD.
© FARLEY, SMITH & DENIS SURVEYING LTD., 2021.

Fieldwork was completed on the 18th day of October, 2021.

Daniel Robinson
Date: _____
Daniel Robinson
Ontario Land Surveyor

FARLEY, SMITH & DENIS SURVEYING LTD.
ONTARIO LAND SURVEYORS
CANADA LAND SURVEYORS
Unit 275, 30 COLONNADE ROAD, OTTAWA, ONTARIO K2E 7J6
TEL: (613) 727-8226 E-mail: fdsurveys@bellnet.ca

FILE No.: 524-21



REGISTERED PLAN 1096

BLOCK 9

SUBJECT TO EASEMENT INST. LT240531
N 60° 27' 15" W
N 65° 55' 15" W
A=60.77
R=317.52
C=60.68
P. I. N. 04517 - 2000
PART 8 PLAN 4R - 295533
PART 9 PLAN 4R - 295533

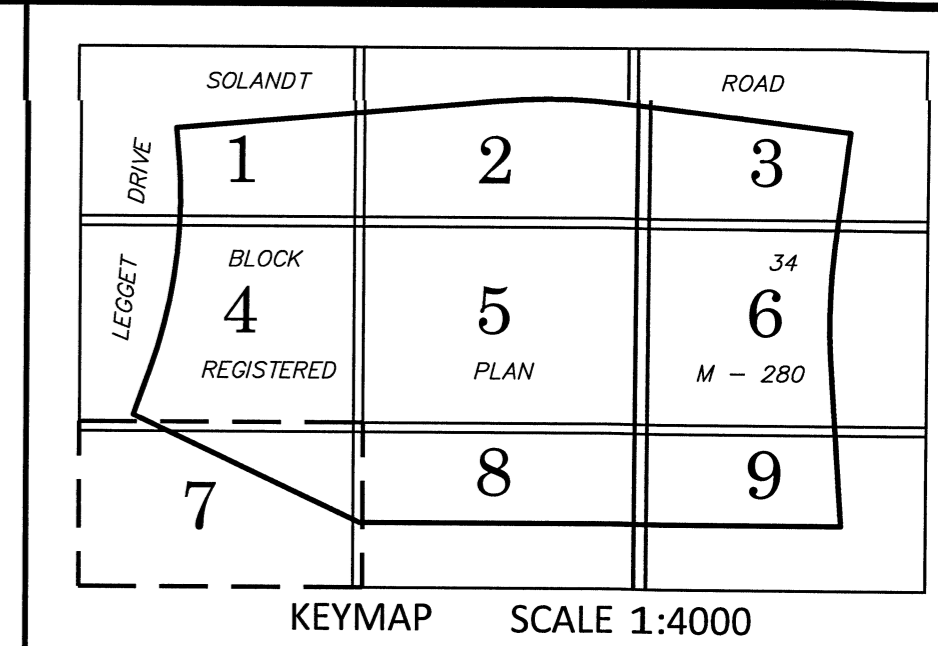
BLOCK 34
Asphalt Parking Lot
P. I. N. 04517 - 2000
PART 7 PLAN 4R - 295533

REGISTERED PLAN M-280

P. I. N. 04517 - 2000
PART 8 PLAN 4R - 295533

P. I. N. 04517 - 2000
PART 9 PLAN 4R - 295533

P. I. N. 04517 - 2000
PART 6 PLAN 4R - 295533

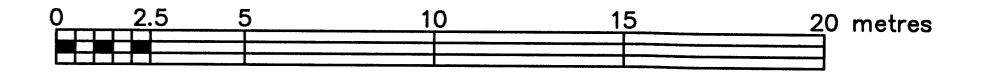


TOPOGRAPHIC SKETCH OF SHEET 7 OF 9

PART OF BLOCKS 33 AND 34 REGISTERED PLAN M-280 CITY OF OTTAWA

FARLEY, SMITH & DENIS SURVEYING LTD. 2021

Scale 1: 200



Metric Note

Distances and coordinates on this plan are in metres and can be converted to feet by dividing by 0.3048.

Distance Note

Distances shown on this plan are ground distances and can be converted to grid distances by multiplying by the combined scale factor of 0.99992.

Boundary Note

This Sketch is to be read in conjunction with a Surveyor's Real Property Report dated October 19, 2021 (FSD Ref. 524-21)

Elevation Notes

1. Elevations shown are geodetic and are referred to Geodetic Datum CGVD-1928 -1978.
2. It is the responsibility of the user of this information to verify that the job benchmark has not been altered or disturbed and that it's relative elevation and description agrees with the information shown on this drawing.

Utility Notes

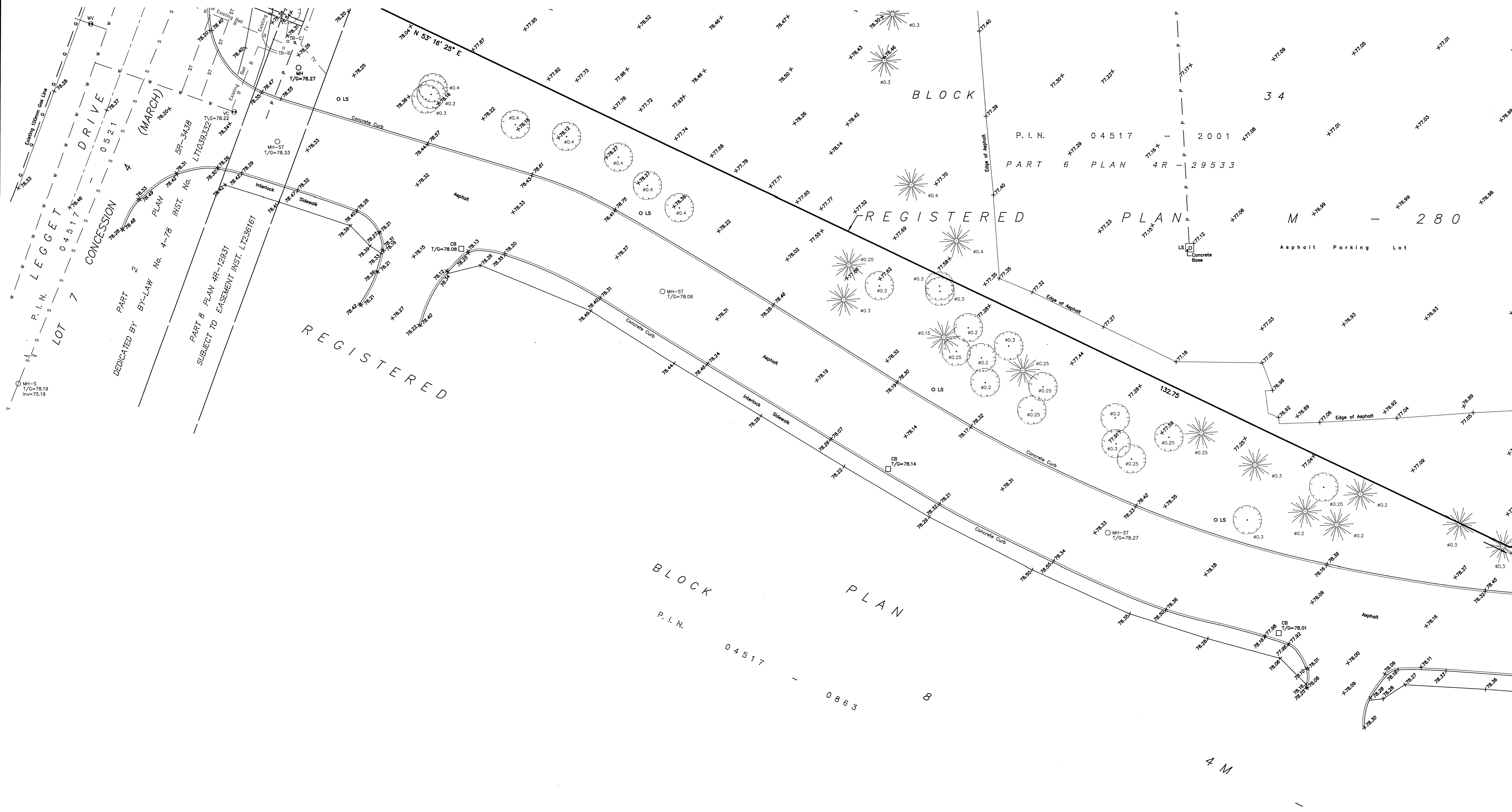
1. This drawing cannot be accepted as acknowledging all of the utilities and it will be the responsibility of the user to contact the respective utility authorities for confirmation.
2. Only visible surface utilities were located.
3. Underground utility data compiled from City of Ottawa utility sheet reference: D-L-04, D-L-05, D-L-11, C-L-18, C-L-23, C-L-24, C-L-28, C-L-29, 9648, 11609, 13508.
4. Sanitary and storm sewer grades and inverts were compiled from: Field measurement and City of Ottawa Utility Sheets.
5. A field location of underground plant by the pertinent utility authority is mandatory before any work involving breaking ground, probing, excavating etc.

Caution Note

- a) This is NOT a Plan of Survey and shall not be used except for the purpose indicated in the title block.
- b) This Sketch is protected by Copyright ©.

Notes & Legend

- MH-ST Maintenance Hole (Storm)
- MH-S Maintenance Hole (Sanitary)
- MH-R Maintenance Hole (Rogers)
- MH-B Maintenance Hole (Bell)
- MH-T Maintenance Hole (Traffic)
- MH-H Maintenance Hole (Hydro)
- MH-W Maintenance Hole (Water)
- MH-A Maintenance Hole (Allstream)
- MH Maintenance Hole (Unidentified)
- ST — Underground Storm Sewer
- S — Underground Sanitary Sewer
- W — Underground Water
- P — Underground Hydro
- G — Underground Gas
- B — Underground Bell / Telus
- TV — Underground Rogers / Allstream
- Overhead Wires
- ⊕ Valve Chamber (Watermain)
- ⊙ Traffic Light
- ⊙ Utility Pole
- ⊙ AN Anchor
- ⊙ LS Light Standard
- ⊙ CB Catch Basin
- ⊙ FH Fire Hydrant
- ⊙ TB-C Cable Terminal Box
- ⊙ TB-B Bell Terminal Box
- ⊙ TB-T Telus Terminal Box
- ⊙ FP Flag Pole
- ⊙ EC Electrical Charger
- ⊙ H-T Hydro Transformer
- ⊙ Inv. Invert
- ⊙ T/G Top of Grate
- ⊙ U/Eave Underside of Eave
- ⊙ Tpfdrn Top of Foundation
- ⊙ El Elevation
- ⊙ CL Centreline
- ⊙ WV Water Valve
- ⊙ GM Gas Meter
- ⊙ B Bollard
- ⊙ S Sign
- ⊙ Diameter
- ⊙ CRW Concrete Retaining Wall
- ⊙ SRW Stone Retaining Wall
- + 65.00 Location of Elevations
- + 65.00 Top of Concrete Curb / Retaining Wall Elevation
- ⊙ Deciduous Tree - The Symbol shown denotes location and trunk diameter only. Size of its' root system/overhead canopy may be smaller/larger than the symbol size depicted on this plan.
- ⊙ Coniferous Tree - The Symbol shown denotes location and trunk diameter only. Size of its' root system/overhead canopy may be smaller/larger than the symbol size depicted on this plan.

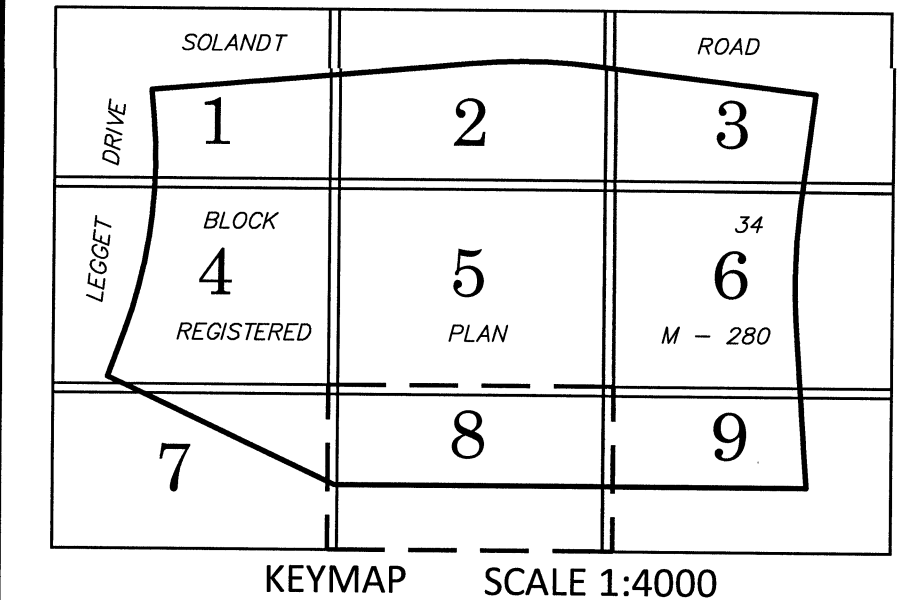
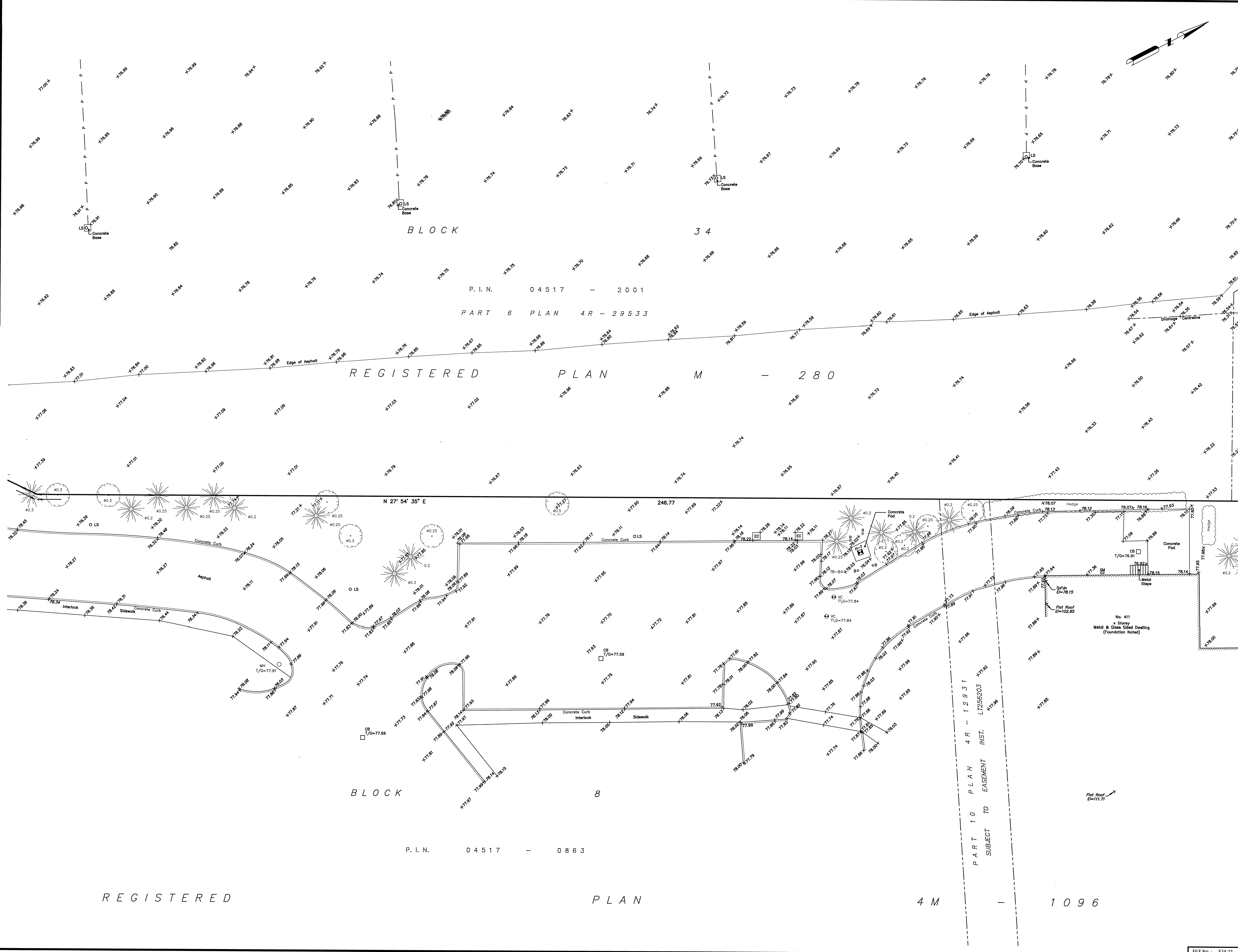


WARNING NO PERSON MAY COPY, REPRODUCE, DISTRIBUTE OR ALTER THIS PLAN IN WHOLE OR IN PART WITHOUT THE WRITTEN PERMISSION OF FARLEY, SMITH & DENIS SURVEYING LTD.
© FARLEY, SMITH & DENIS SURVEYING LTD., 2021.

Fieldwork was completed on the 18th day of October, 2021.
Date: Oct 19/21
Daniel Robinson
Ontario Land Surveyor

FARLEY, SMITH & DENIS SURVEYING LTD.
ONTARIO LAND SURVEYORS
CANADA LAND SURVEYORS
Unit 275, 30 COLONNADE ROAD, OTTAWA, ONTARIO K2E 7J6
TEL: (613) 727-8226 E-mail: fdsurveys@bellnet.ca

FILE No.: 524-21



TOPOGRAPHIC SKETCH OF SHEET 8 OF 9
**PART OF BLOCKS 33 AND 34
 REGISTERED PLAN M-280
 CITY OF OTTAWA**

FARLEY, SMITH & DENIS SURVEYING LTD. 2021
 Scale 1: 200
 0 2.5 5 10 15 20 metres

Metric Note
 Distances and coordinates on this plan are in metres and can be converted to feet by dividing by 0.3048.

Distance Note
 Distances shown on this plan are ground distances and can be converted to grid distances by multiplying by the combined scale factor of 0.99992.

Boundary Note
 This Sketch is to be read in conjunction with a Surveyor's Real Property Report dated October 19, 2021 (FSD Ref. 524-21)

Elevation Notes
 1. Elevations shown are geodetic and are referred to Geodetic Datum CGVD-1928 :1978.
 2. It is the responsibility of the user of this information to verify that the job benchmark has not been altered or disturbed and that its relative elevation and description agrees with the information shown on this drawing.

Utility Notes
 1. This drawing cannot be accepted as acknowledging all of the utilities and it will be the responsibility of the user to contact the respective utility authorities for confirmation.
 2. Only visible surface utilities were located.
 3. Underground utility data compiled from City of Ottawa utility sheet reference: D-L-04, D-L-05, D-L-11, C-L-18, C-L-23, C-L-24, C-L-28, C-L-29, 9648, 11609, 13508.
 4. Sanitary and storm sewer grades and inverts were compiled from: Field measurement and City of Ottawa Utility Sheets.
 5. A field location of underground plant by the pertinent utility authority is mandatory before any work involving breaking ground, probing, excavating etc.

Caution Note
 a) This is NOT a Plan of Survey and shall not be used except for the purpose indicated in the title block.
 b) This Sketch is protected by Copyright ©.

Notes & Legend

○ MH-ST	Denotes	Maintenance Hole (Storm)
○ MH-S		Maintenance Hole (Sanitary)
○ MH-R		Maintenance Hole (Rogers)
○ MH-B		Maintenance Hole (Bell)
○ MH-T		Maintenance Hole (Traffic)
○ MH-H		Maintenance Hole (Hydro)
○ MH-W		Maintenance Hole (Water)
○ MH-A		Maintenance Hole (Allstream)
○ MH-U		Maintenance Hole (Unidentified)
— ST		Underground Storm Sewer
— S		Underground Sanitary Sewer
— W		Underground Water
— P		Underground Hydro
— G		Underground Gas
— B		Underground Bell / Telus
— TV		Underground Rogers / Allstream
— OW		Overhead Wires
○ VC		Valve Chamber (Watermain)
○ TL		Traffic Light
○ UP		Utility Pole
○ AN		Anchor
○ LS		Light Standard
○ CB		Catch Basin
○ FH		Fire Hydrant
○ TB-C		Cable Terminal Box
○ TB-B		Bell Terminal Box
○ TB-T		Telus Terminal Box
○ FP		Flag Pole
EC		Electrical Charger
H-T		Hydro Transformer
Invt.		Invert
T/G		Top of Grate
U/Eave		Underside of Eave
TpFdn		Top of Foundation
EL		Elevation
C/L		Centreline
○ WV		Water Valve
○ GM		Gas Meter
○ B		Bollard
△ S		Sign
○		Diameter
CRW		Concrete Retaining Wall
SRW		Stone Retaining Wall
+ 65.00		Location of Elevations
+ 65.00		Top of Concrete Curb / Retaining Wall Elevation
○		Deciduous Tree - The Symbol shown denotes location and trunk diameter only. Size of its' root system/overhead canopy may be smaller/larger than the symbol size depicted on this plan.
★		Coniferous Tree - The Symbol shown denotes location and trunk diameter only. Size of its' root system/overhead canopy may be smaller/larger than the symbol size depicted on this plan.

WARNING NO PERSON MAY COPY, REPRODUCE, DISTRIBUTE OR ALTER THIS PLAN IN WHOLE OR IN PART WITHOUT THE WRITTEN PERMISSION OF FARLEY, SMITH & DENIS SURVEYING LTD.
 © FARLEY, SMITH & DENIS SURVEYING LTD., 2021.

Fieldwork was completed on the 18th day of October, 2021.
 Date *Oct. 18/21*
 Daniel Robinson
 Ontario Land Surveyor

FARLEY, SMITH & DENIS SURVEYING LTD.
 ONTARIO LAND SURVEYORS
 CANADA LAND SURVEYORS
 Unit 275, 30 COLONNADE ROAD, OTTAWA, ONTARIO K2E 7J6
 TEL. (613) 727-8226 E-mail: fdsurvey@bellnet.ca

FILE No.: 524-21