

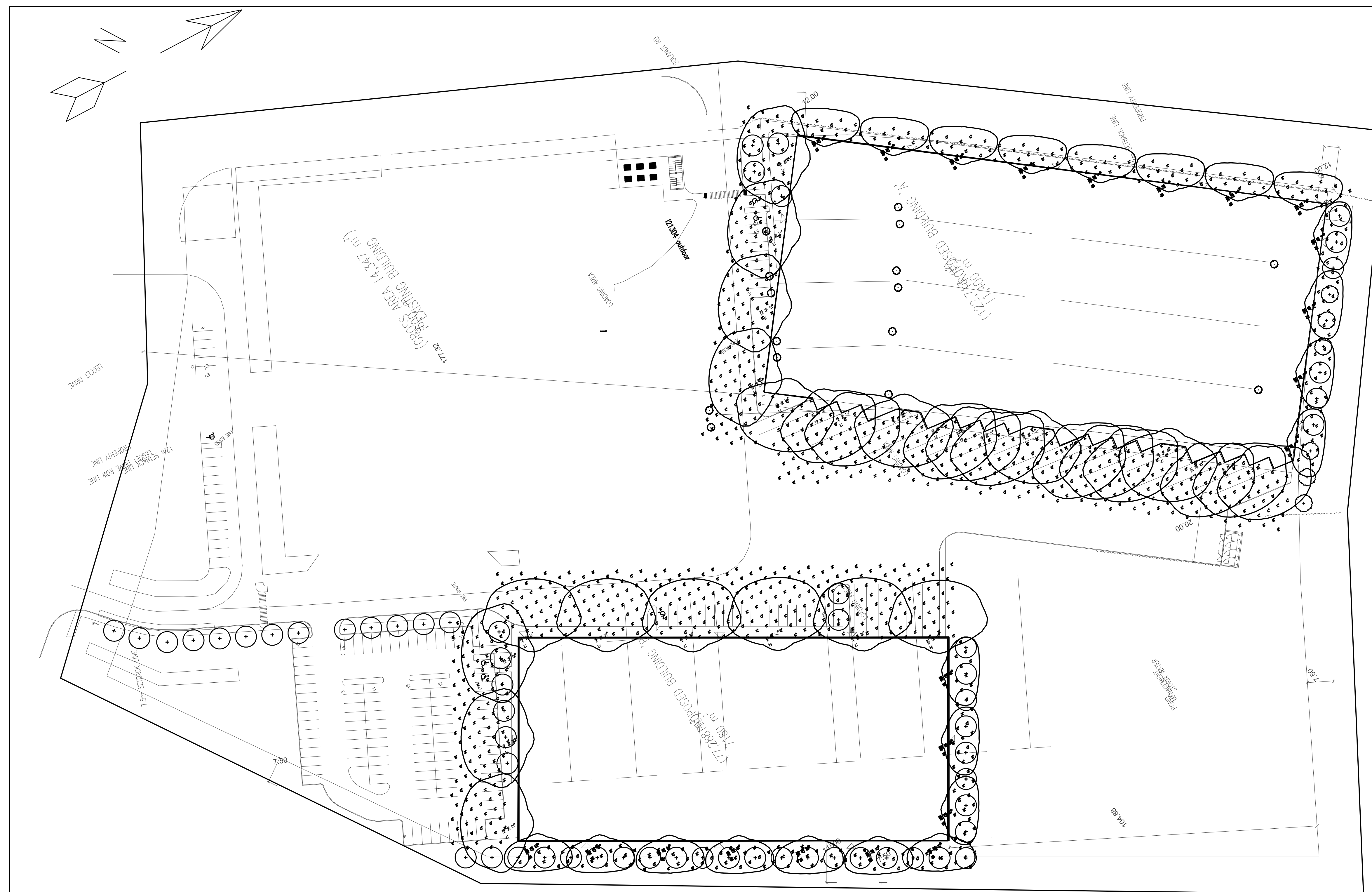
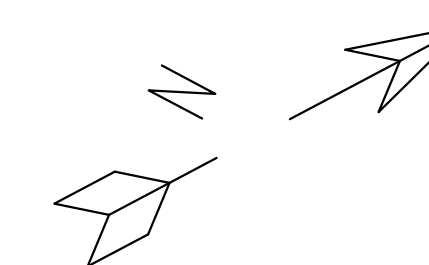


MADONNA ENGINEERING INC.
93 Woodstream Blvd Unit 10
Woodbridge, Ontario L4L 7Y7
Tel: (905) 265 1911 Fax: (905) 265 1998

- GENERAL NOTES
- THE DRAWING IS THE PROPERTY OF MADONNA ENGINEERING INC. AND CANNOT BE REPRODUCED WITHOUT WRITTEN PERMISSION.
 - ALL MEASUREMENTS MUST BE VERIFIED ON SITE BY CONTRACTOR AND REPORT ANY DISCREPANCIES TO MADONNA ENGINEERING INC. BEFORE PROCEEDING WITH THE WORK.
 - DO NOT SCALE DRAWINGS.
 - THIS DRAWING SHALL NOT BE USED FOR CONSTRUCTION UNLESS NOTED AS ISSUED FOR CONSTRUCTION BELOW.

ARCHITECTURE 49

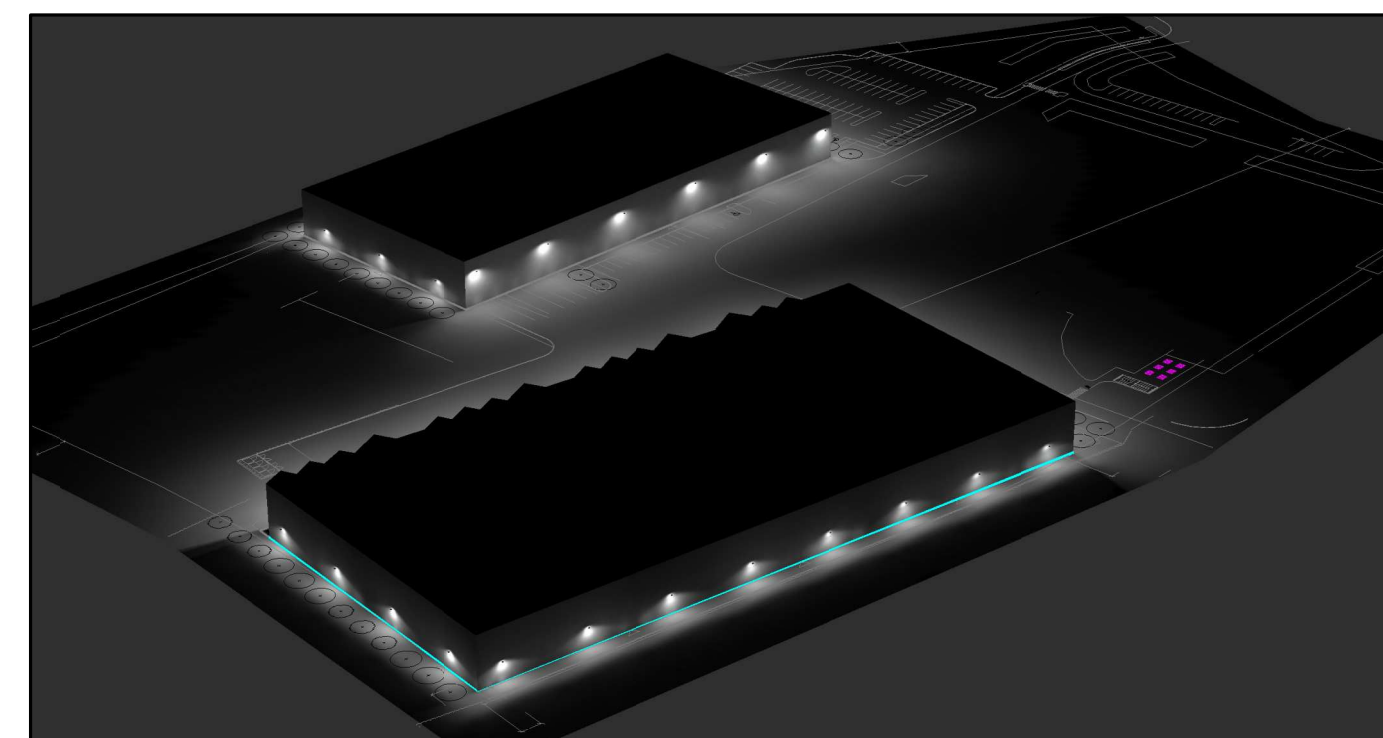
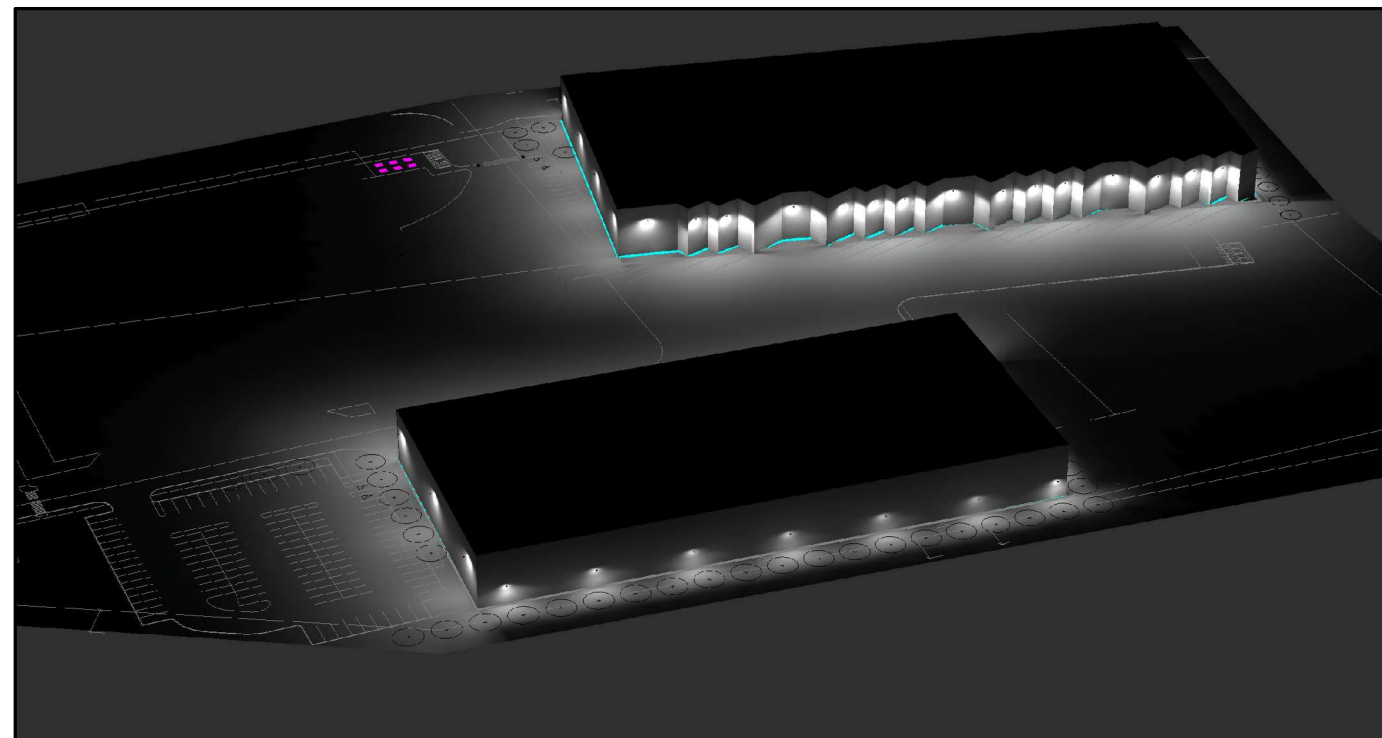
1345 ROSEMOUNT AVENUE
CORNWALL, ONTARIO, CANADA K6J 3E5
PHONE: 613-833-8804 | FAX: 613-836-0335 | WWW.ARCHITECTURE49.COM



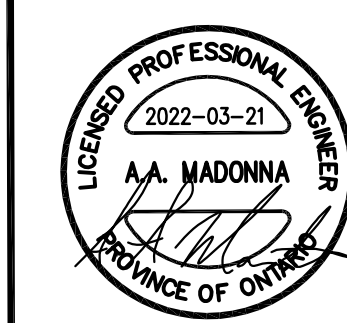
LumNo	Label	Z
1	W7	15
2	W7	15
3	W7	15
4	W7	15
5	W7	15
6	W7	15
7	W7	15
8	W7	15
9	W7	15
10	W7	15
11	W7	15
12	W7	15
13	W7	15
14	W7	15
15	W7	15
16	W7	15
17	W7	15
18	W7	15
19	W7	15
20	W7	15
21	W7	15
22	W6	30
24	W6	30
25	W6	30
26	W6	30
27	W6	30
28	W6	30
29	W6	30
30	W6	30
31	W6	30
32	W6	30
33	W6	30
34	W6	30
35	W6	30
36	W6	30
37	W6	30
38	W6	30
39	W6	30
40	W6	30
41	W6	30
42	W6	30
43	W6	30
44	W6	30
45	W6	30
46	W6	30
47	W6	30
48	W6	30
49	W6	30
50	W6	30
51	W7	15

Symbol	Qty	Label	Lum. Lumens	LLF	Lum. Watts	Description	MANUFAC
+	28	W6	9328	0.900	89.9	LPW-32-90-NW-G3-4	STONCO / KEENE
+	22	W7	3474	0.900	34.3	LPW-16-30-NW-G3-3	STONCO / KEENE

Label	CalcType	Units	Avg	Max	Min	Avg/Min	Max/Min
Bldg A Front	Illuminance	Fc	1.41	2.6	0.4	3.53	6.50
Bldg A Load	Illuminance	Fc	2.38	4.7	0.0	N.A.	N.A.
Bldg A Security	Illuminance	Fc	1.57	4.1	0.0	N.A.	N.A.
Bldg B Front	Illuminance	Fc	1.18	2.4	0.4	2.95	6.00
Bldg B North side	Illuminance	Fc	1.26	2.6	0.4	3.15	6.50
Bldg B Security	Illuminance	Fc	1.60	4.2	0.5	3.20	8.40



1	ISSUED FOR PERMIT	21/03/2022
#	ISSUED FOR	DDMMYY



ACCESS PROPERTY DEVELOPMENT
100 CANADIAN ROAD
SCARBOROUGH, ON.

PROJECT NAME & ADDRESS:
ACCESS STORAGE
415 LEGGET DRIVE,
KANATA, ON

SCALE:	DATE:	DRAWN BY:	JOB No.:
	MAR, 2022	E.L.	21-0161

DRAWING TITLE:
SITE PLAN - LIGHTINGS

DRAWING No.:

E-1