

Copyright Reserved

The Contractor shall verify and be responsible for all dimensions. DO NOT scale the drawing - any errors or omissions shall be reported to Stantec without delay.
The Copyrights to all designs and drawings are the property of Stantec. Reproduction or use for any purpose other than that authorized by Stantec is forbidden.

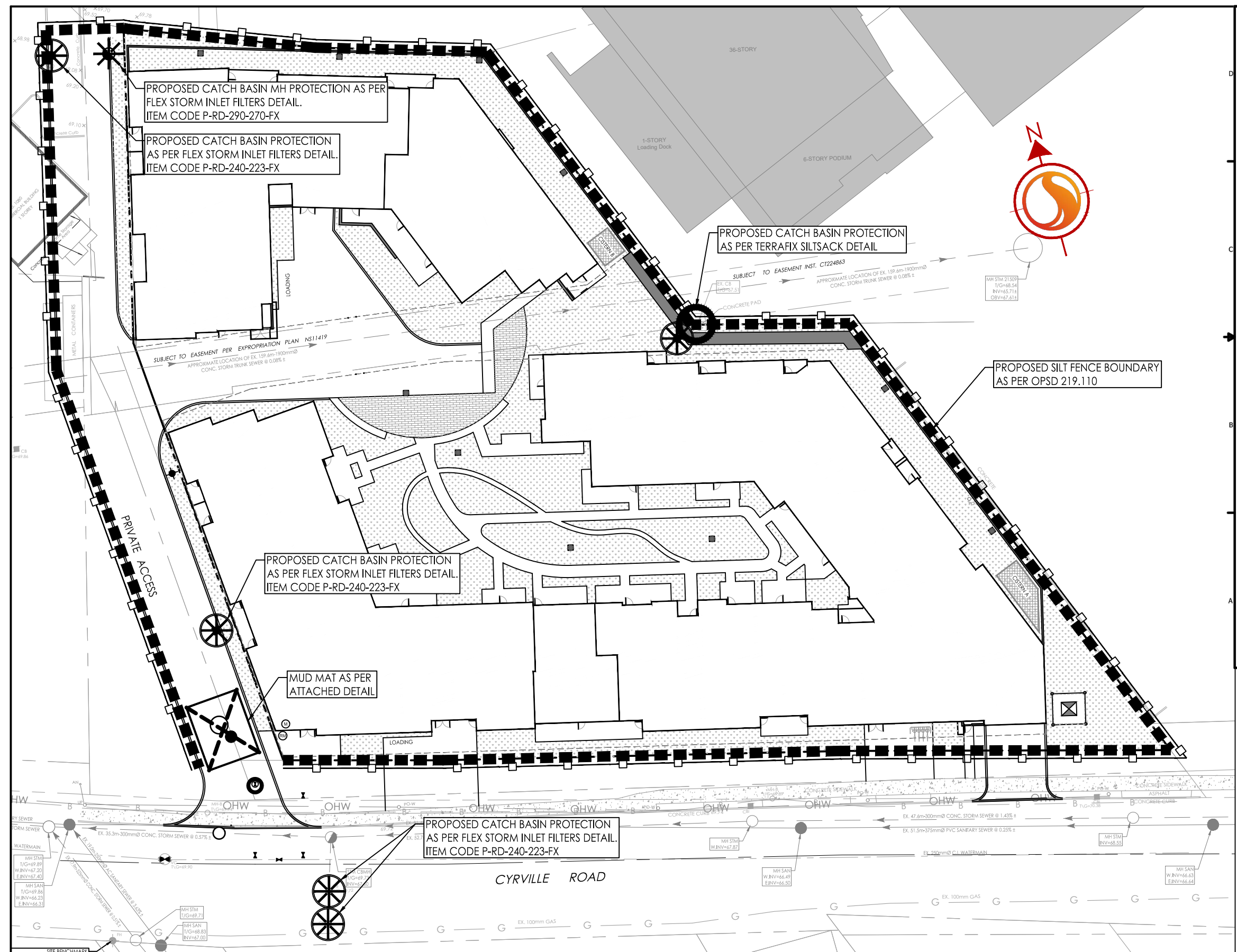
Legend

- PROPOSED SILT FENCE BOUNDARY AS PER OPSD 219.110
- PROPOSED CONSTRUCTION FENCE AS PER DETAIL.
- PROPOSED CATCH BASIN PROTECTION AS PER FLEX STORM INLET FILTERS DETAIL. ITEM CODE P-RD-240-223-FX
- PROPOSED CATCH BASIN AH PROTECTION AS PER FLEX STORM INLET FILTERS DETAIL. ITEM CODE P-RD-290-270-FX
- PROPOSED CATCH BASIN PROTECTION AS PER TERRAFIX SILTSACK DETAIL.
- PROPOSED MUD MAT LOCATION
- PROPOSED VALVE BOX
- PROPOSED VALVE CHAMBER
- PROPOSED FIRE HYDRANT
- PROPOSED SANITARY SEWER MANHOLE
- PROPOSED STORM SEWER MANHOLE
- PROPOSED CATCH BASIN
- PROPOSED WATTS FD-530 (OR EQUIVALENT) TO BE CONNECTED TO INTERNAL STORM SEWER PLUMBING.

Best Management Practices

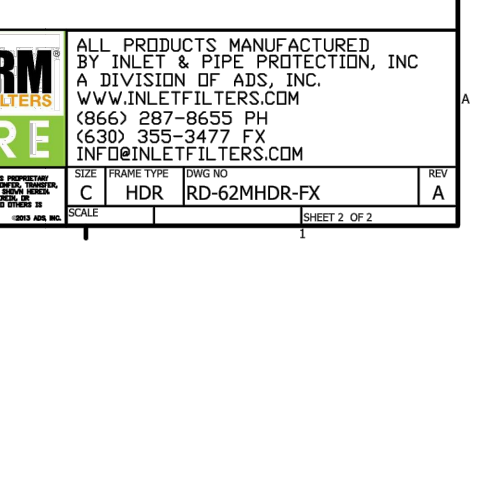
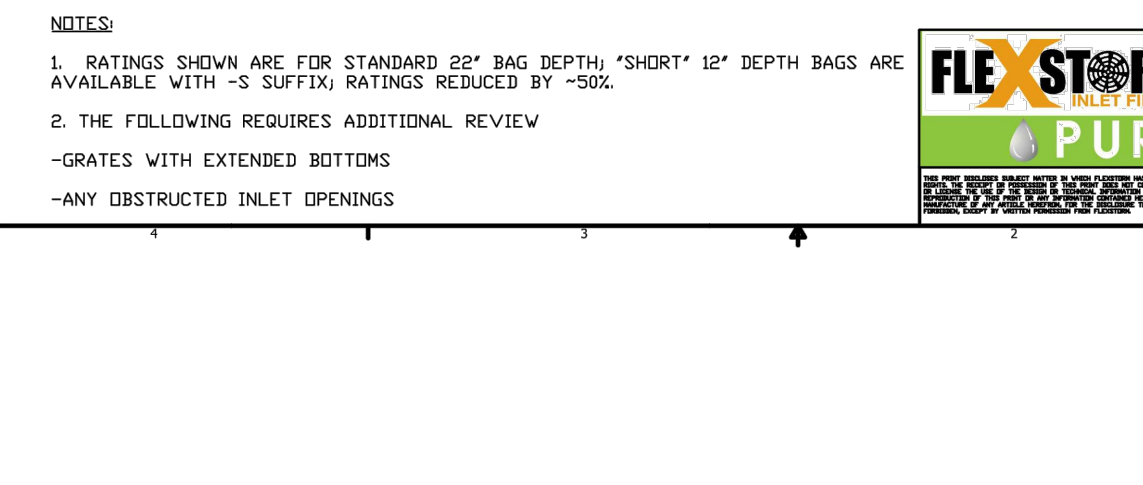
CONTRACTOR TO PROVIDE EROSION AND SEDIMENT CONTROLS (BEST MANAGEMENT PRACTICES) DURING CONSTRUCTION OF THIS PROJECT. THE CONTRACTOR SHALL IMPLEMENT BEST MANAGEMENT PRACTICES TO PROVIDE PROTECTION OF THE AREA DRAINAGE SYSTEM AND THE RECEIVING WATERCOURSE. DURING CONSTRUCTION ACTIVITIES, THE CONTRACTOR ACKNOWLEDGES THAT FAILURE TO IMPLEMENT APPROPRIATE EROSION AND SEDIMENT CONTROL MEASURES MAY BE SUBJECT TO PENALTIES IMPOSED BY AN APPLICABLE REGULATORY AGENCY.

1. LIMIT THE EXTENT OF EXPOSED SOILS AT ANY GIVEN TIME.
2. REVEGETATE EXPOSED AREAS AND SLOPES AS SOON AS POSSIBLE.
3. MINIMIZE AREA TO BE CLEARED AND GRUBBED.
4. PROTECT EXPOSED SLOPES WITH PLASTIC OR SYNTHETIC MULCH.
5. INSTALL CATCH BASIN INSERTS OR EQUIVALENT IN ALL PROPOSED CATCH BASINS AND CATCH BASIN MANHOLES AND IN ALL EXISTING CATCH BASINS THAT WILL RECEIVE RUN-OFF FROM THE SITE.
6. A SILT FENCE SHALL BE INSTALLED AROUND THE PERIMETER OF ALL AND ANY STOCKPILES OF MATERIAL TO BE USED OR REMOVED FROM SITE. (LOCATION TO BE DETERMINED)
7. A VISUAL INSPECTION SHALL BE DONE DAILY ON SEDIMENT CONTROL MEASURES AND CLEANED OF ANY ACCUMULATED SOLIDS AS REQUIRED. THE DEPOSITS WILL BE DISPOSED OFF-SITE AS PER THE REQUIREMENTS OF THE CONTRACT.
8. SEDIMENT CONTROL BARRIERS MAY ONLY BE REMOVED TEMPORARILY WITH APPROVAL OF CONTRACT ADMINISTRATOR TO ACCOMMODATE CONSTRUCTION OPERATIONS. ALL AFFECTED BARRIERS MUST BE REINSTATED AT NIGHT WHEN CONSTRUCTION IS COMPLETED. NO REMOVAL WILL OCCUR IF THERE IS A SIGNIFICANT RAINFALL EVENT ANTICIPATED (>10mm) UNLESS A NEW DEVICE HAS BEEN INSTALLED TO PROTECT EXISTING STORM AND SANITARY SEWER SYSTEMS, OR DOWNSTREAM WATERCOURSES.
9. NO REFUELING OR CLEANING OF EQUIPMENT IS PERMITTED NEAR ANY EXISTING WATERWAY.
10. CONTRACTOR SHALL REMOVE SEDIMENT CONTROL MEASURES WHEN, IN THE OPINION OF THE CONTRACT ADMINISTRATOR, THE MEASURES ARE NO LONGER REQUIRED. NO CONTROL MEASURES SHALL BE PERMANENTLY REMOVED WITHOUT PRIOR WRITTEN AUTHORIZATION FROM THE CONTRACT ADMINISTRATOR.
11. THE CONTRACTOR SHALL PERIODICALLY, OR WHEN REQUESTED BY THE CONTRACT ADMINISTRATOR, CLEAN OUT ACCUMULATED SEDIMENTS AS REQUIRED.
12. THE CONTRACTOR SHALL IMMEDIATELY REPORT TO THE ENGINEER ANY ACCIDENTAL DISCHARGES OF SEDIMENT MATERIAL INTO THE WATERCOURSE. APPROPRIATE RESPONSE MEASURES, INCLUDING ANY REPAIRS TO EXISTING CONTROL MEASURES OR THE IMPLEMENTATION OF ADDITIONAL CONTROL MEASURES, SHALL BE CARRIED OUT BY THE CONTRACTOR WITHOUT DELAY.
13. CONTRACTOR SHALL INSTALL MUD MATS AT ALL CONSTRUCTION ENTRANCES TO THE SITE.
14. STORMWATER SWALES TO BE COVERED WITH HYDROSEED AND MULCH.



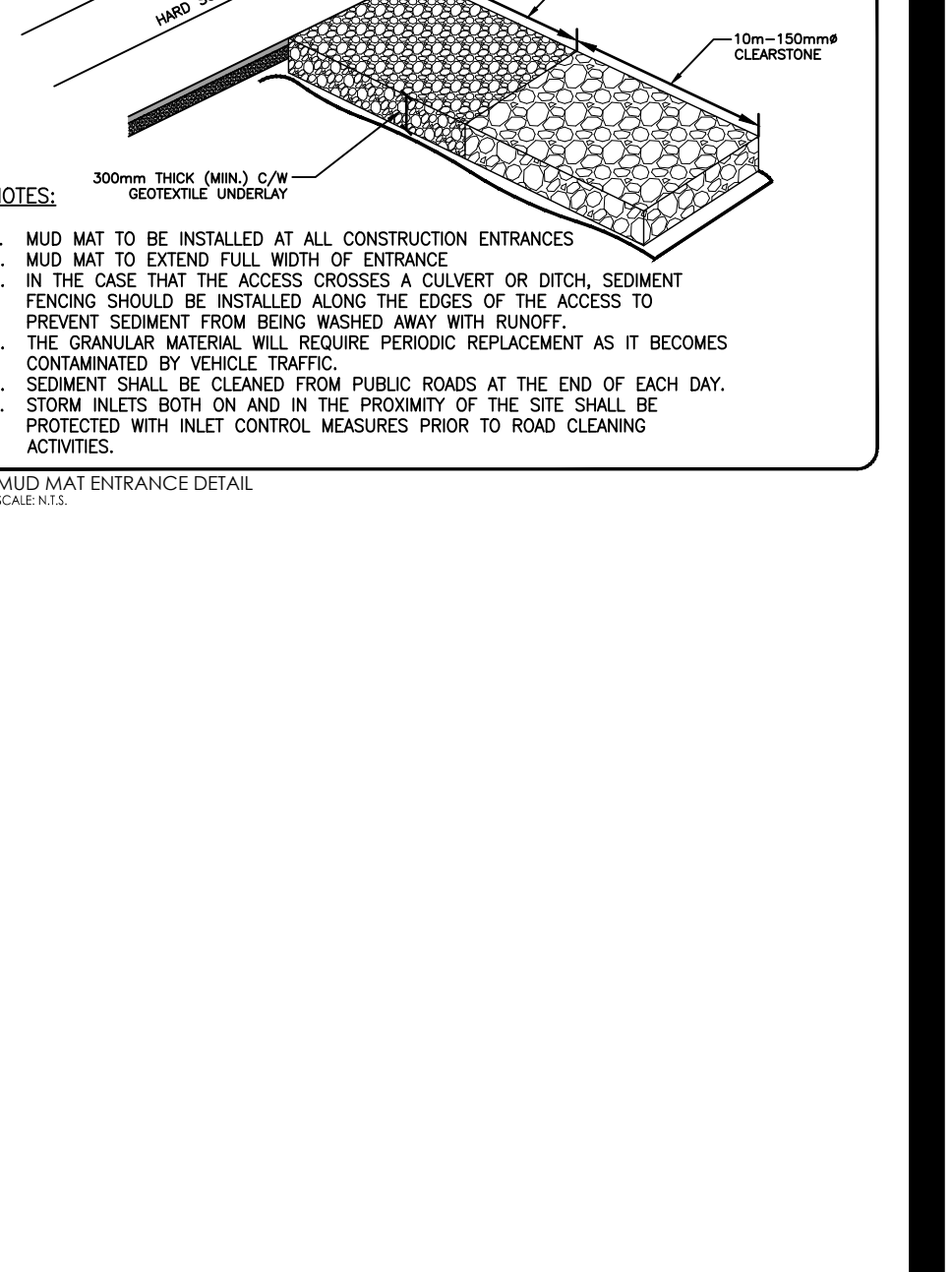
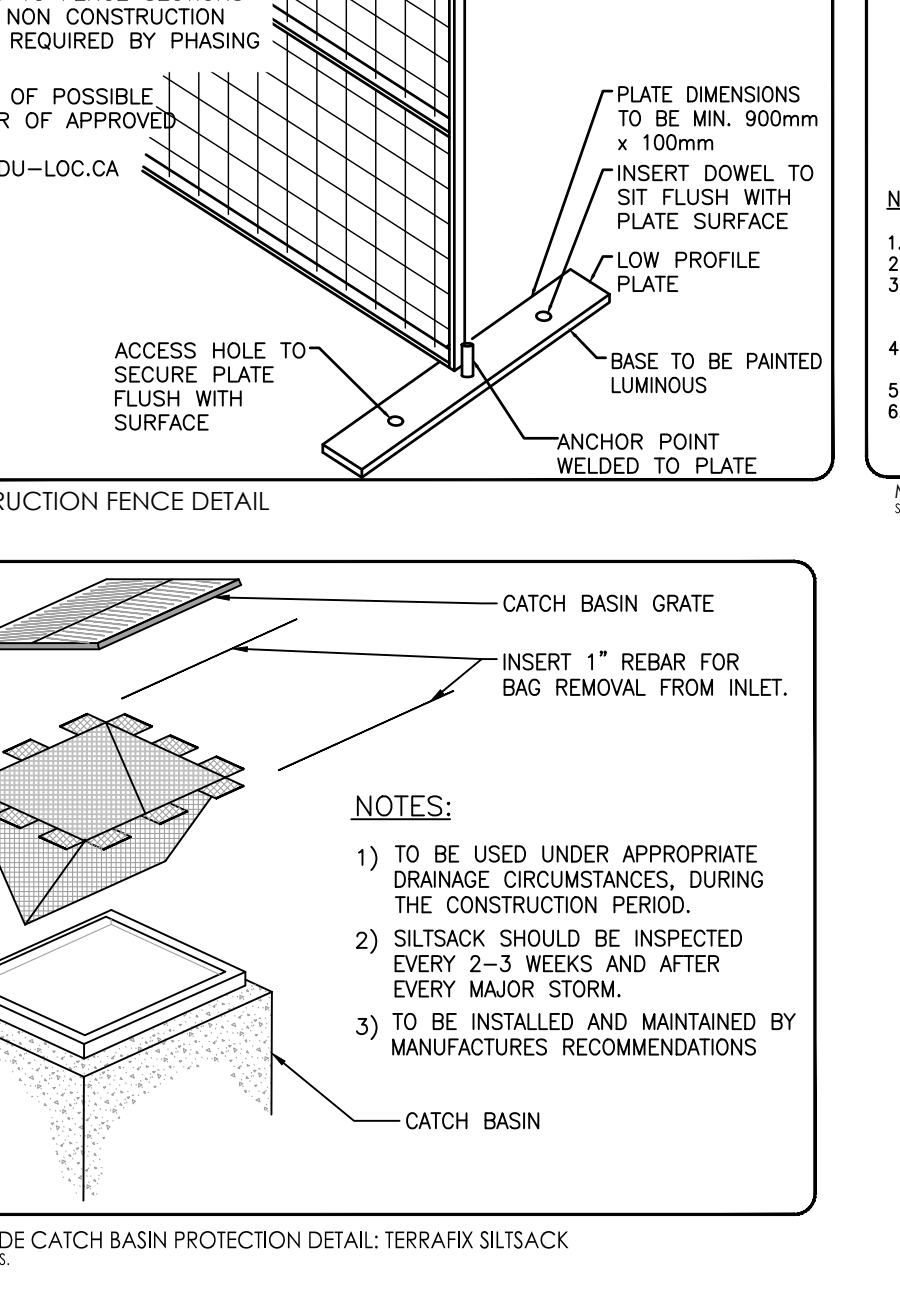
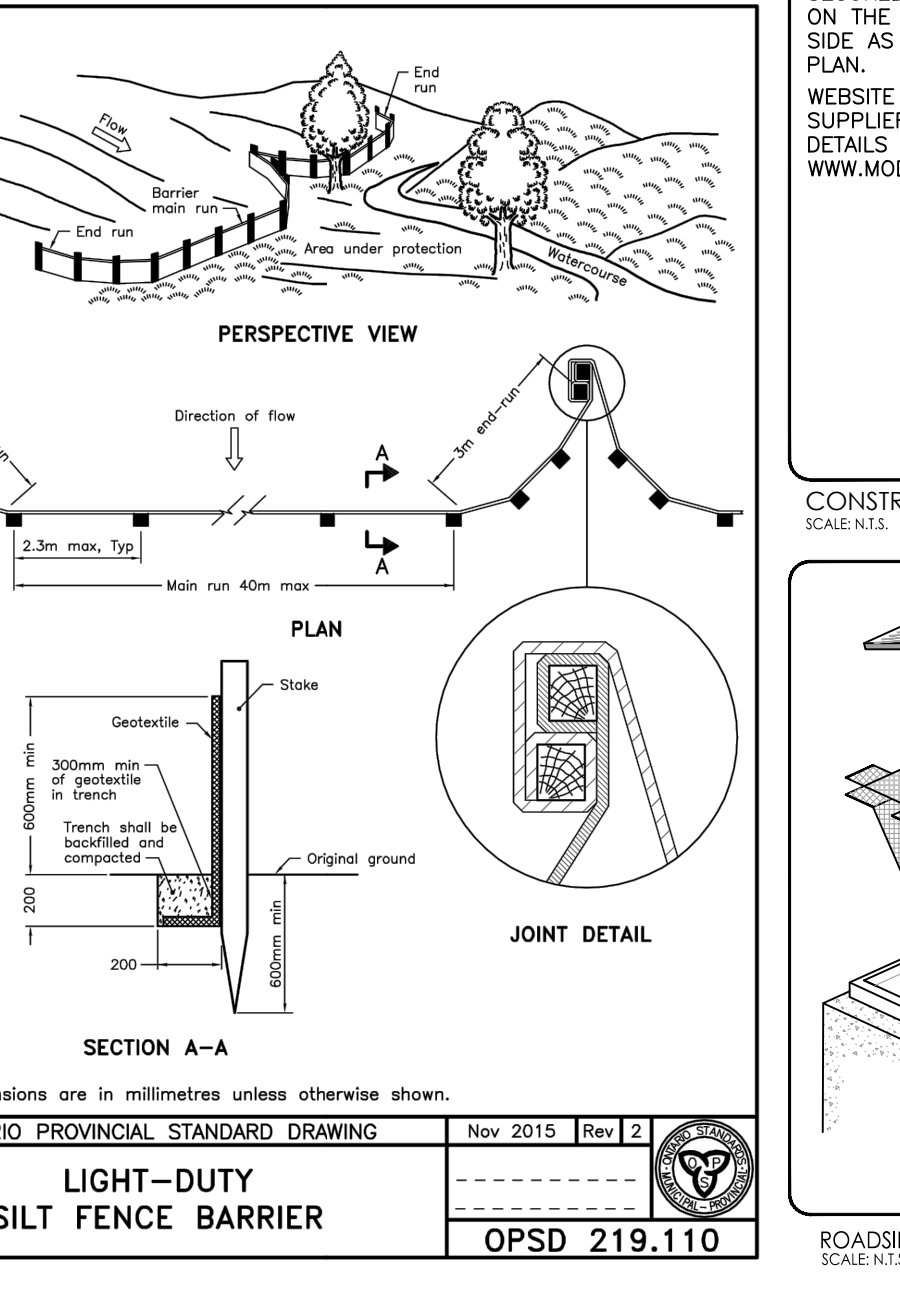
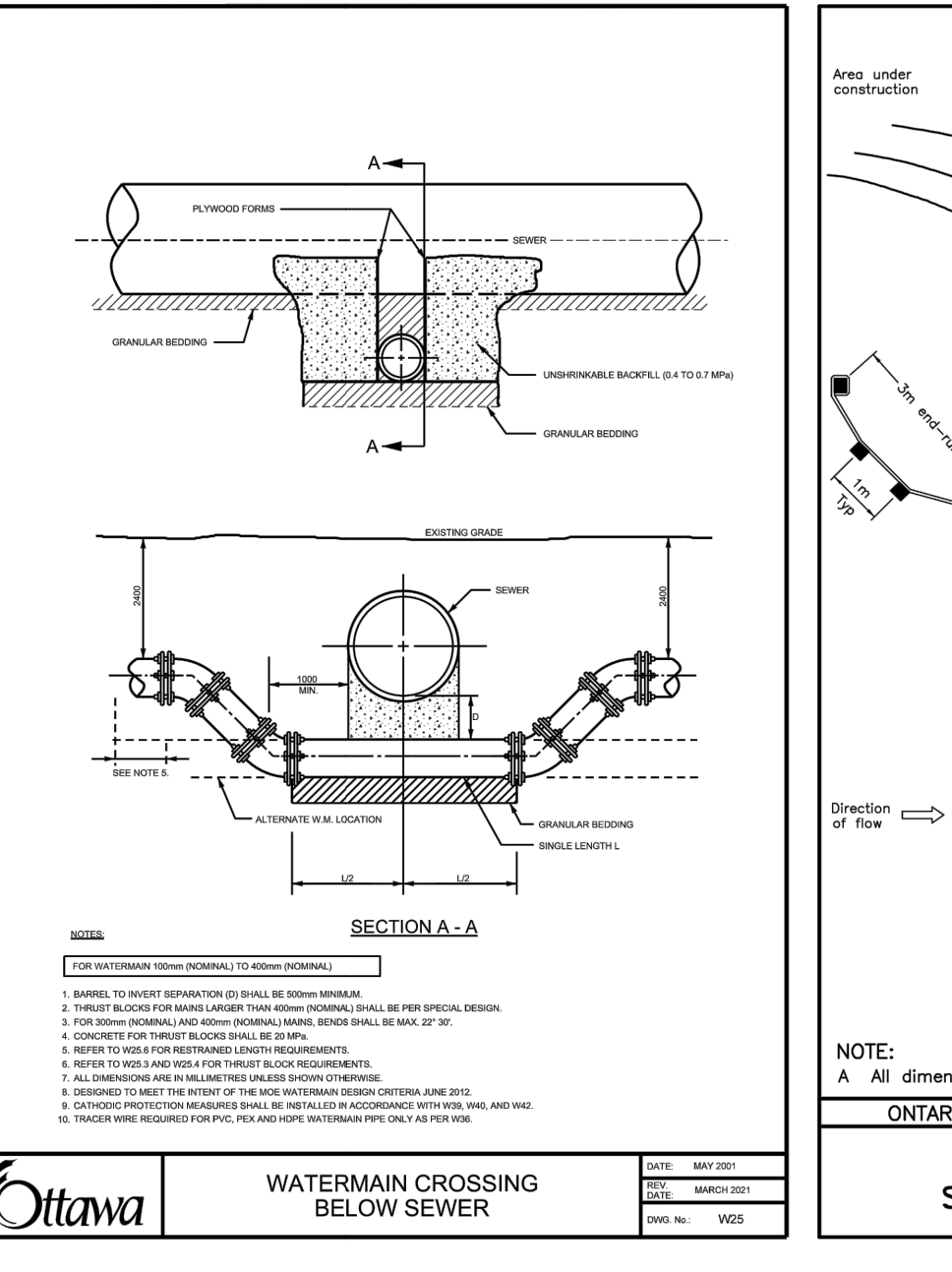
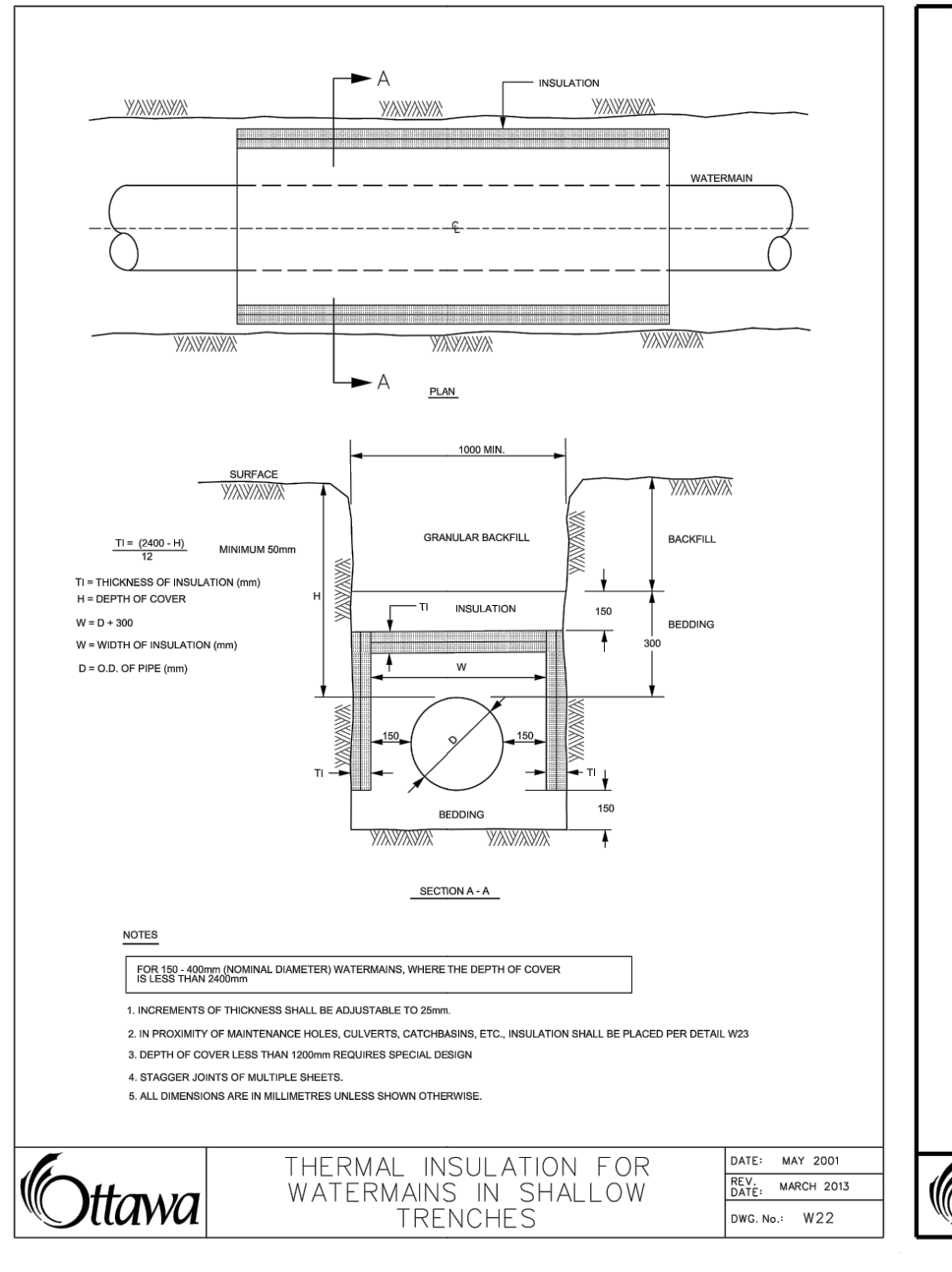
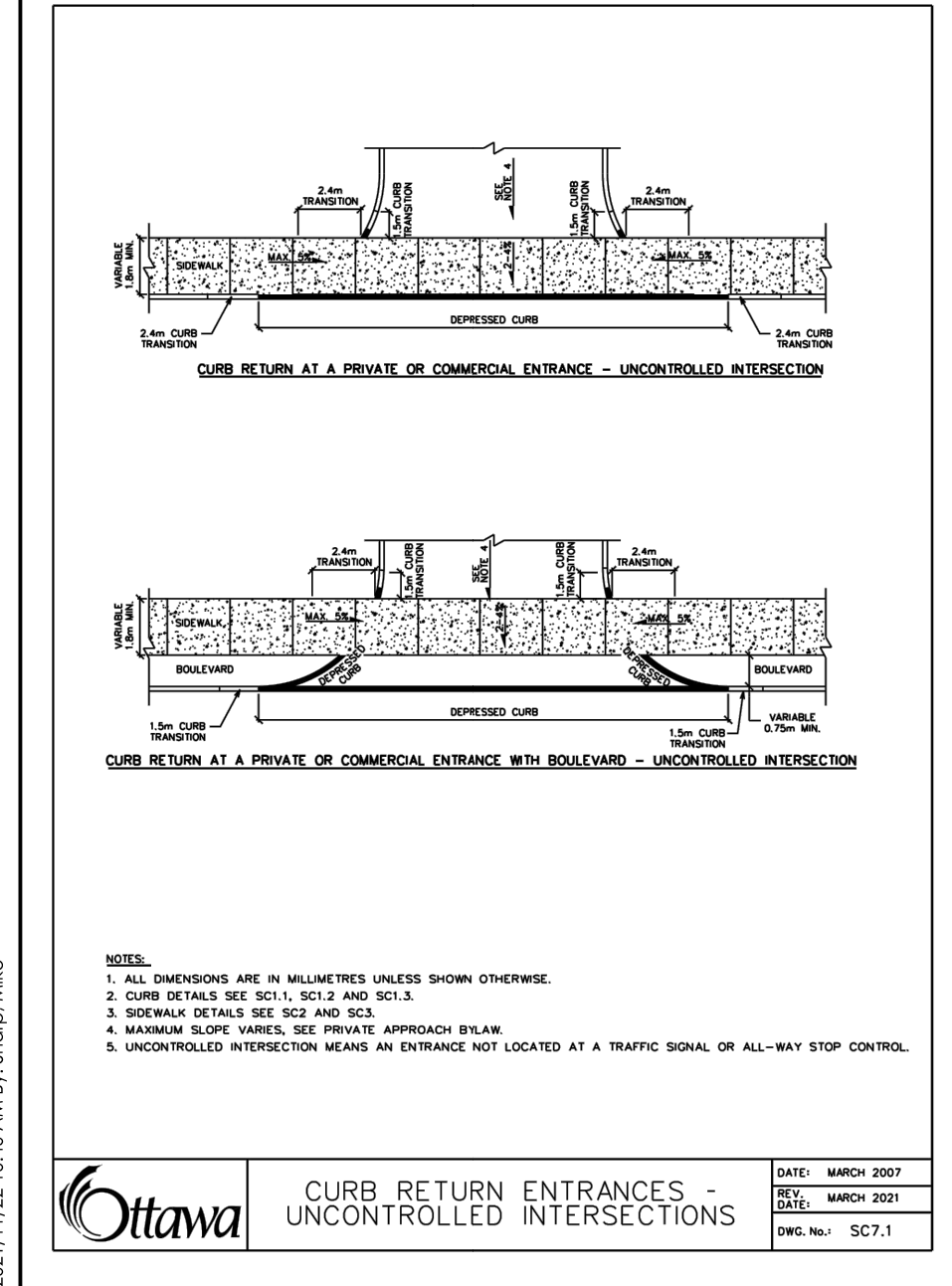
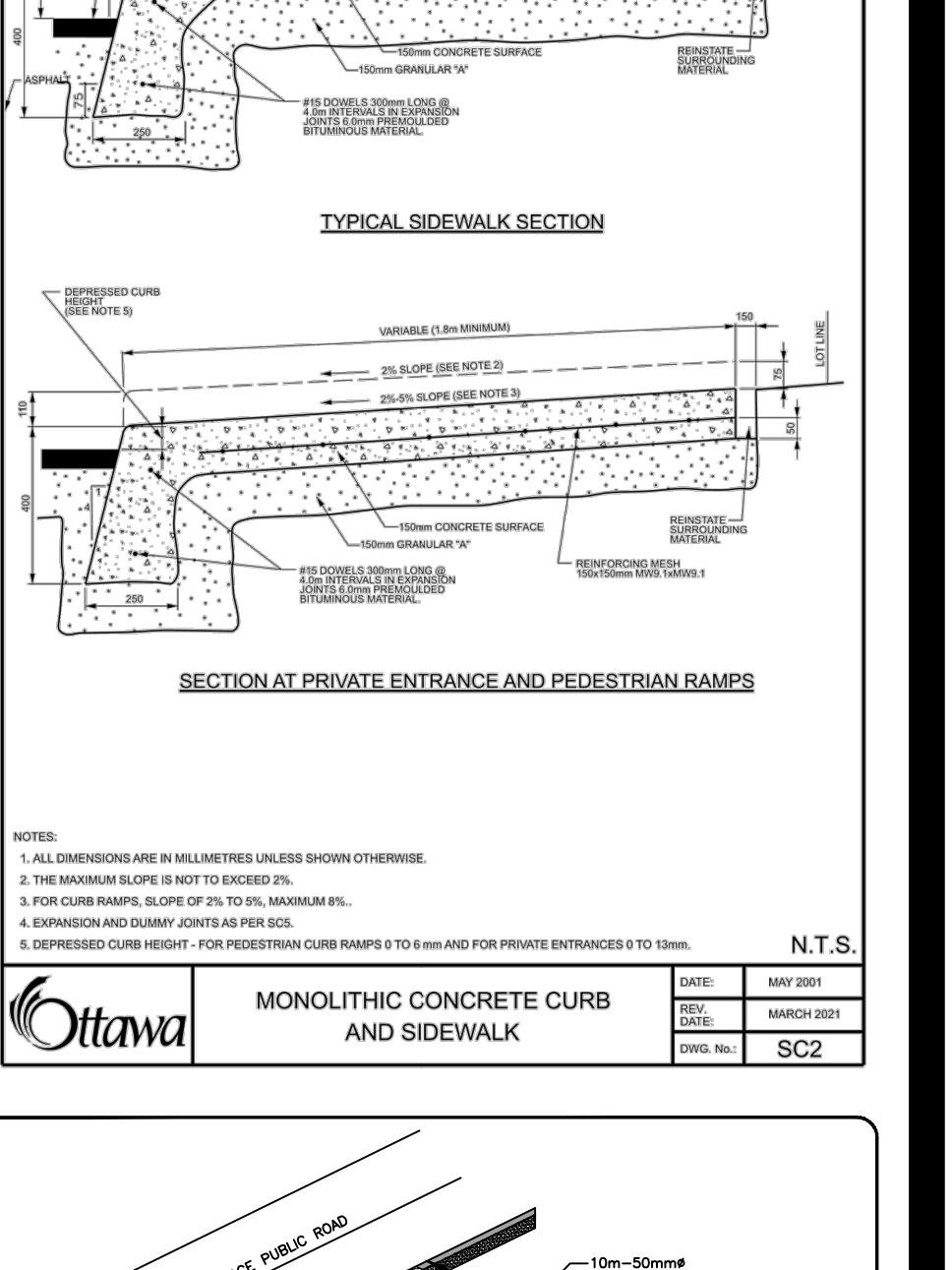
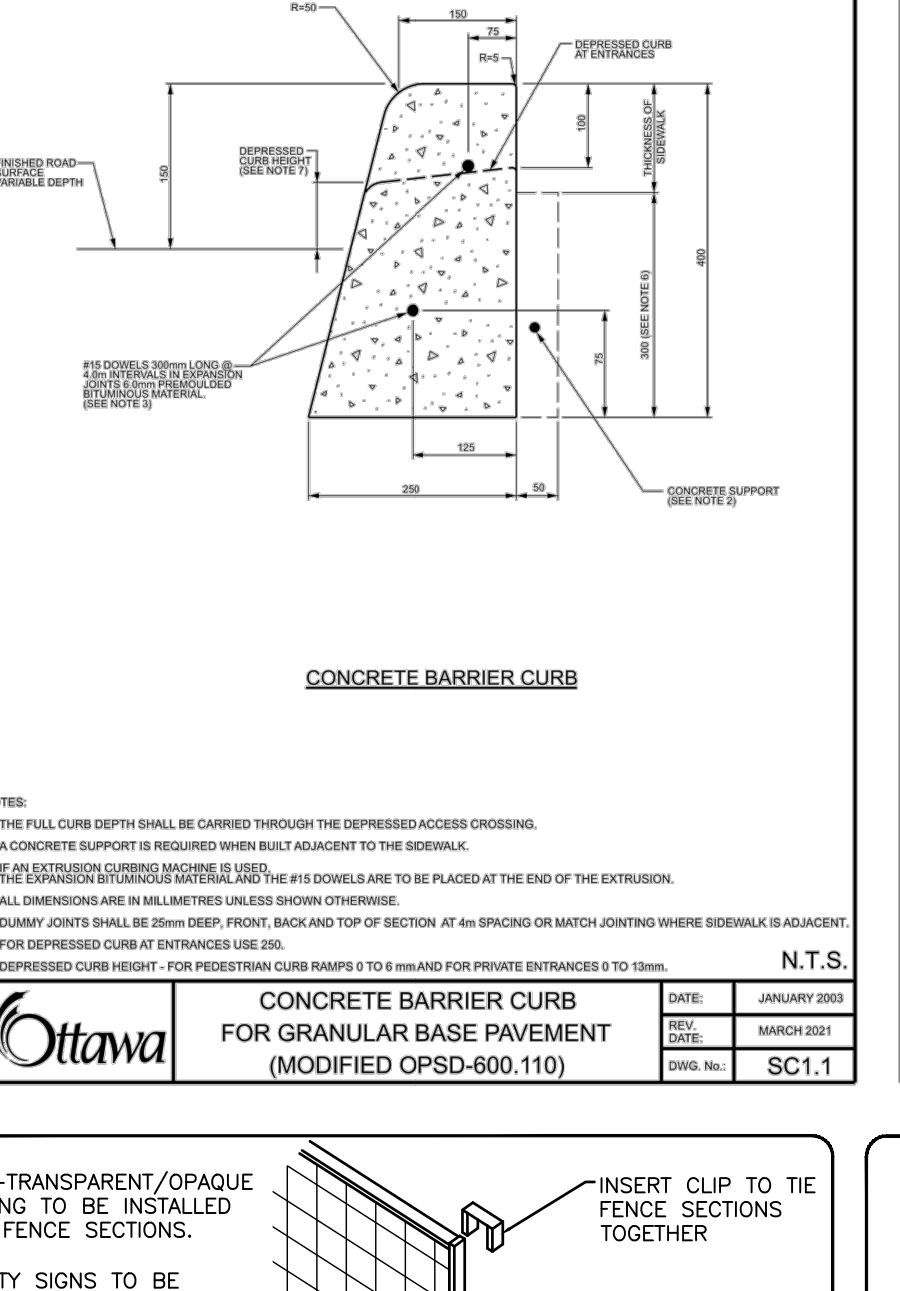
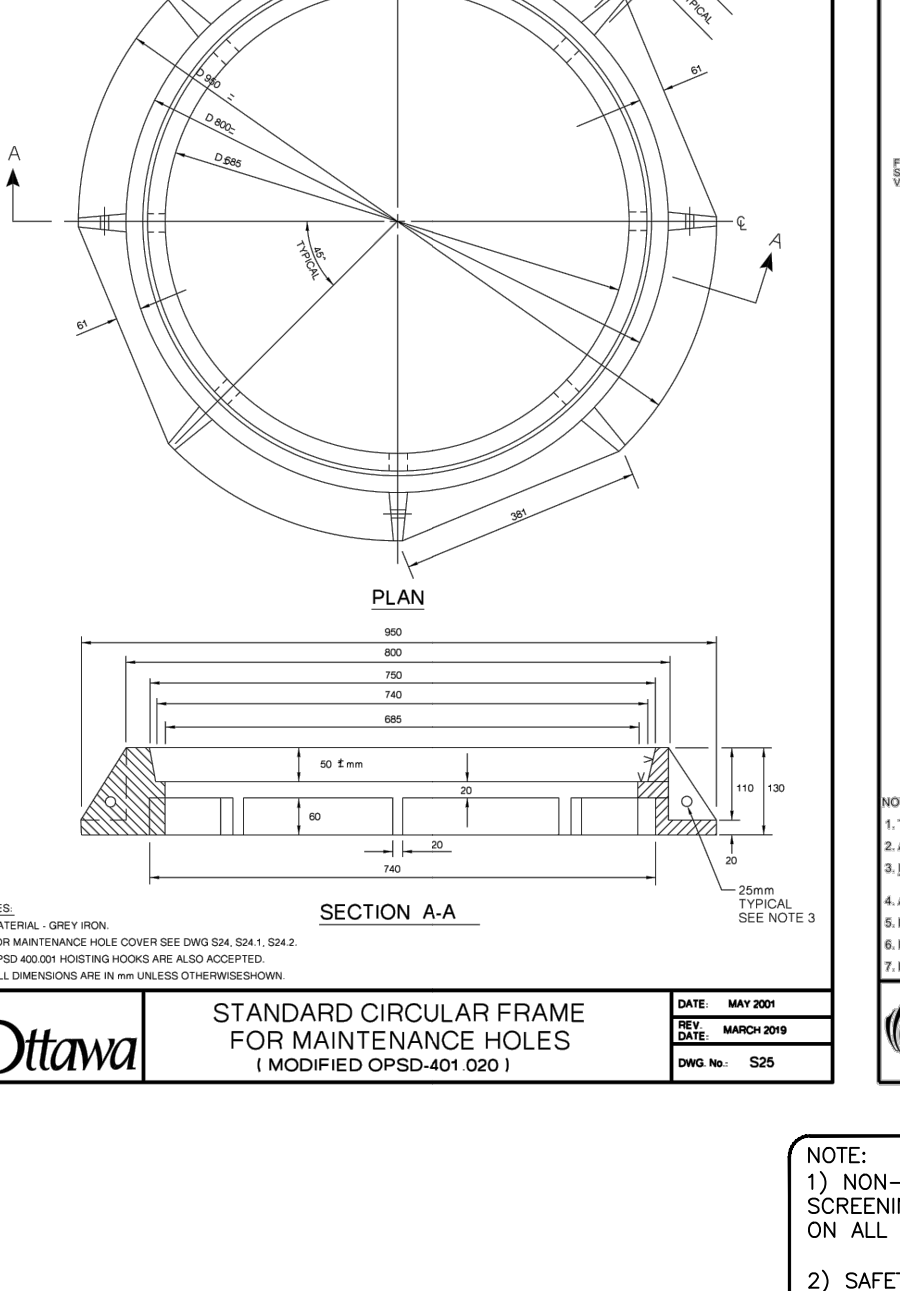
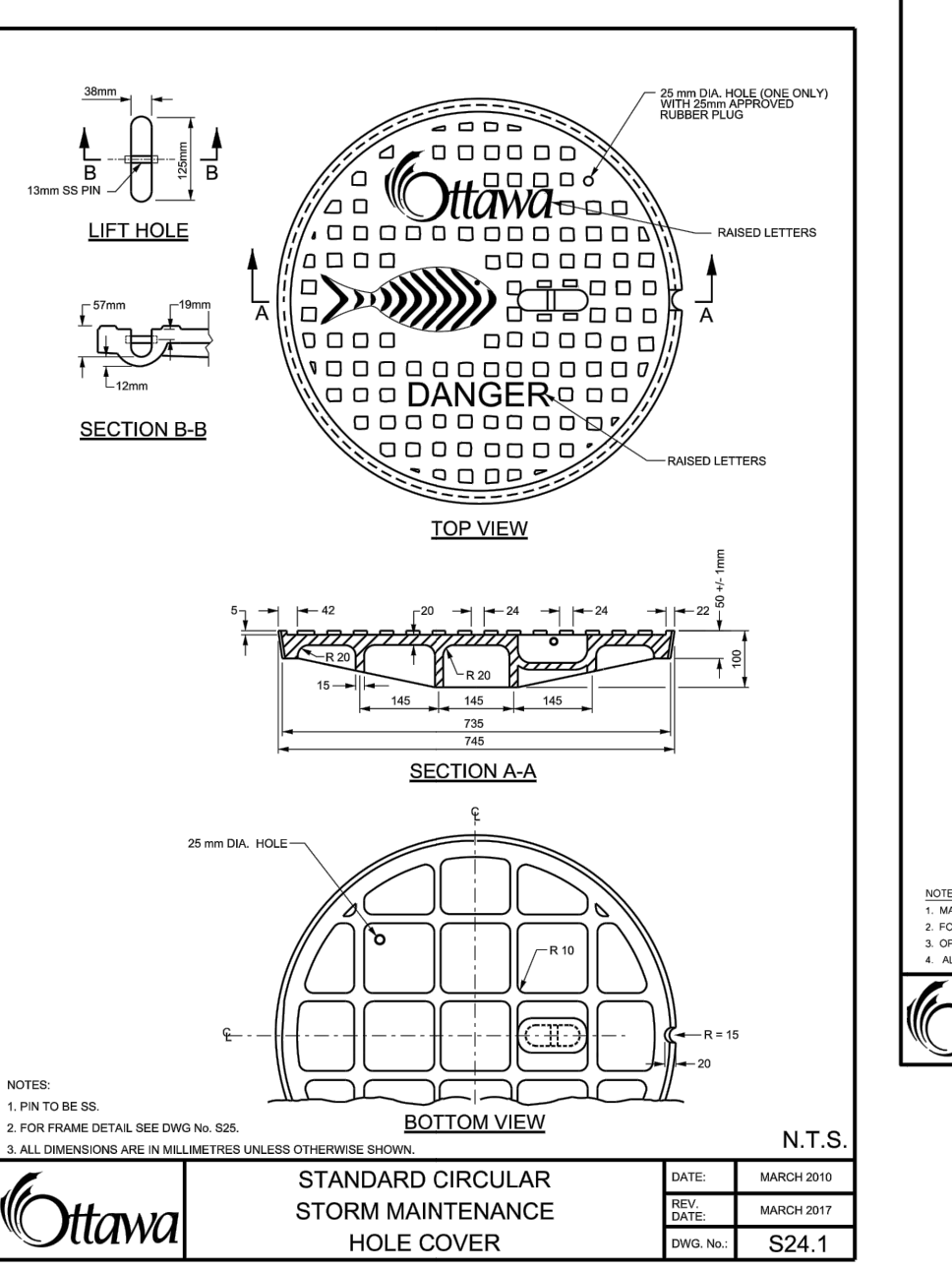
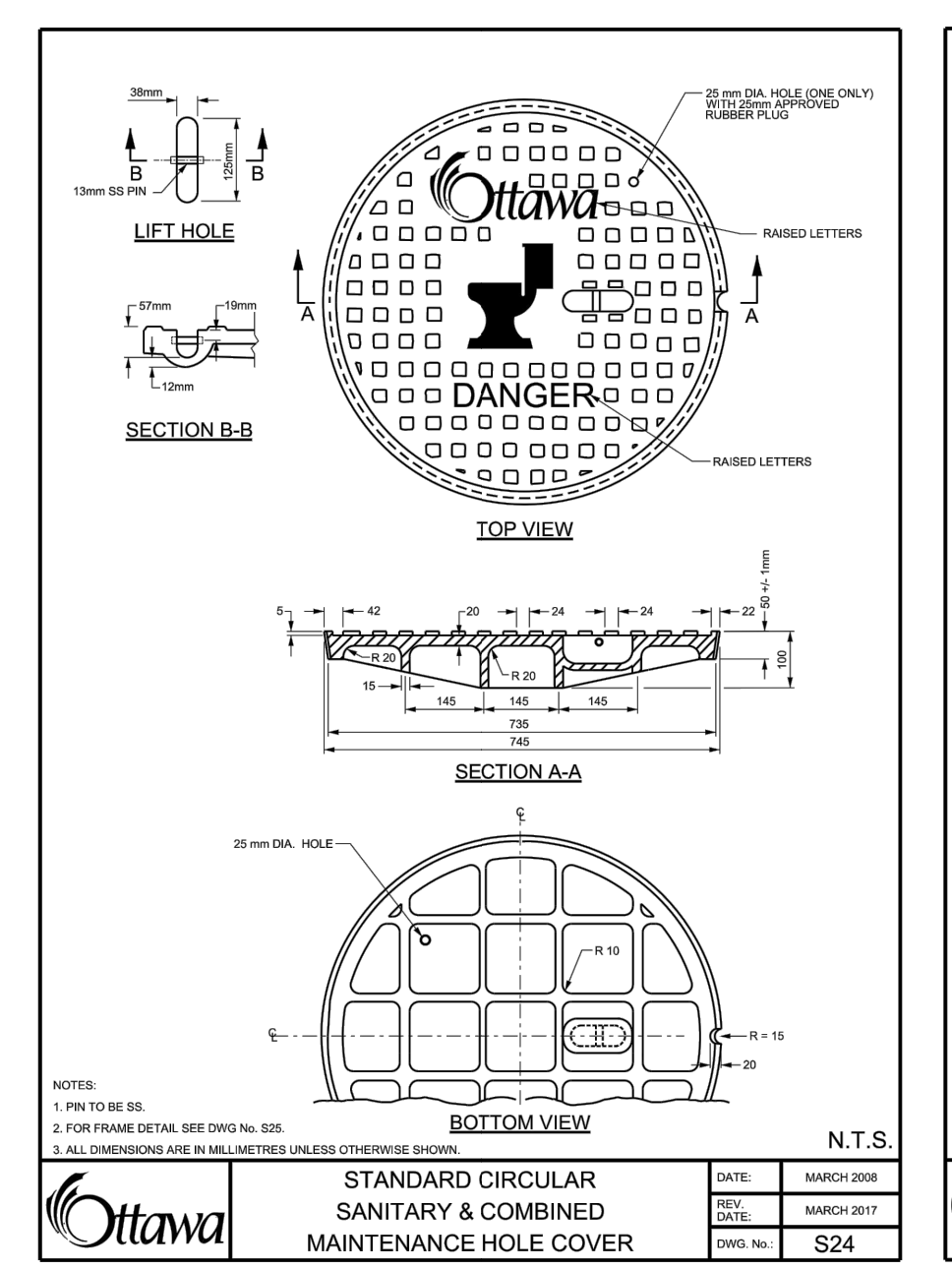
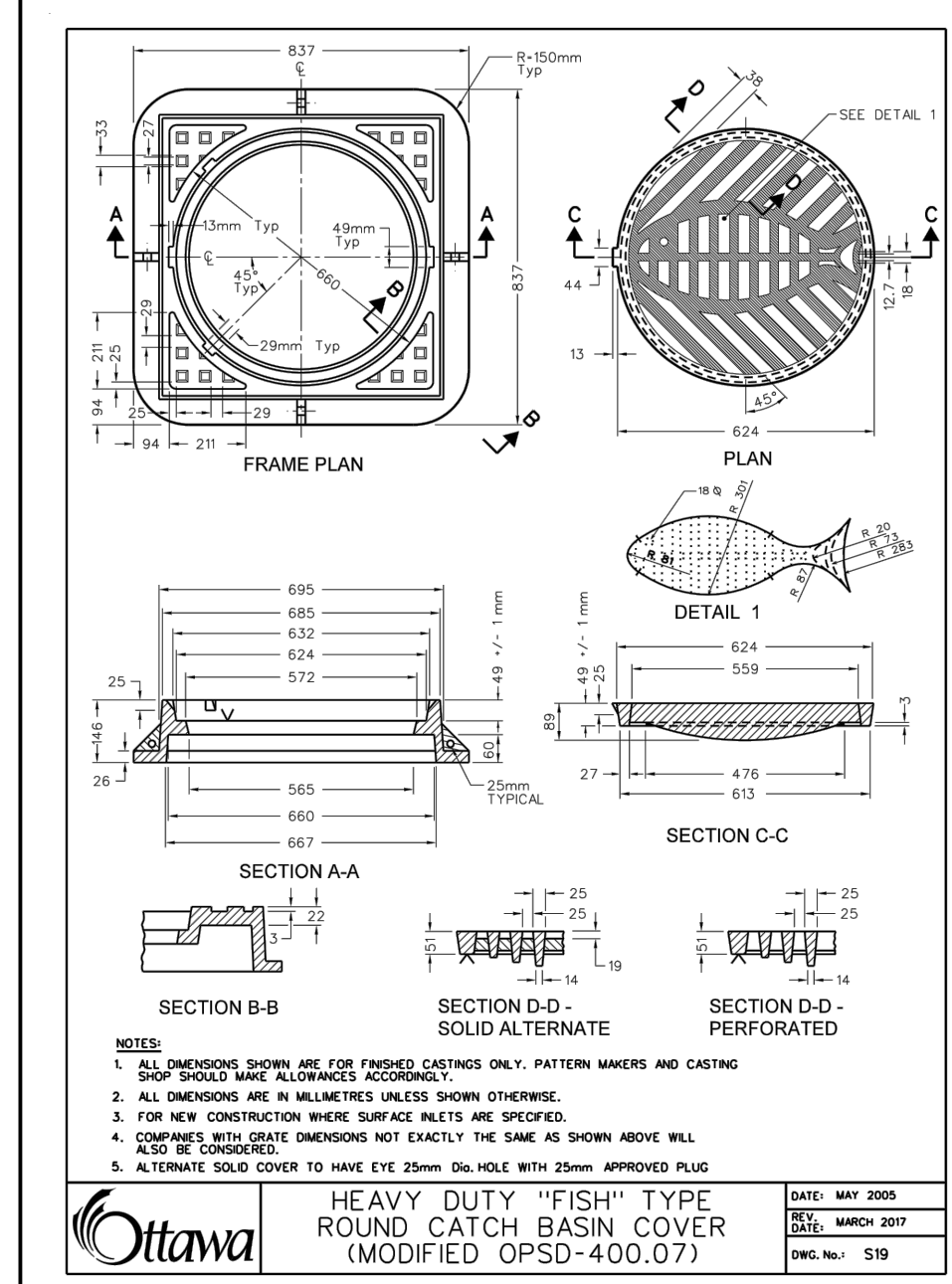
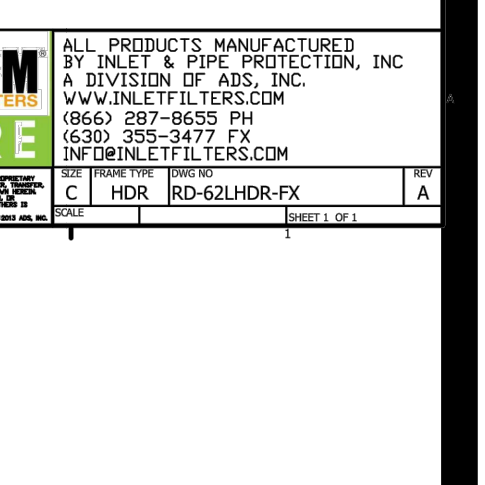
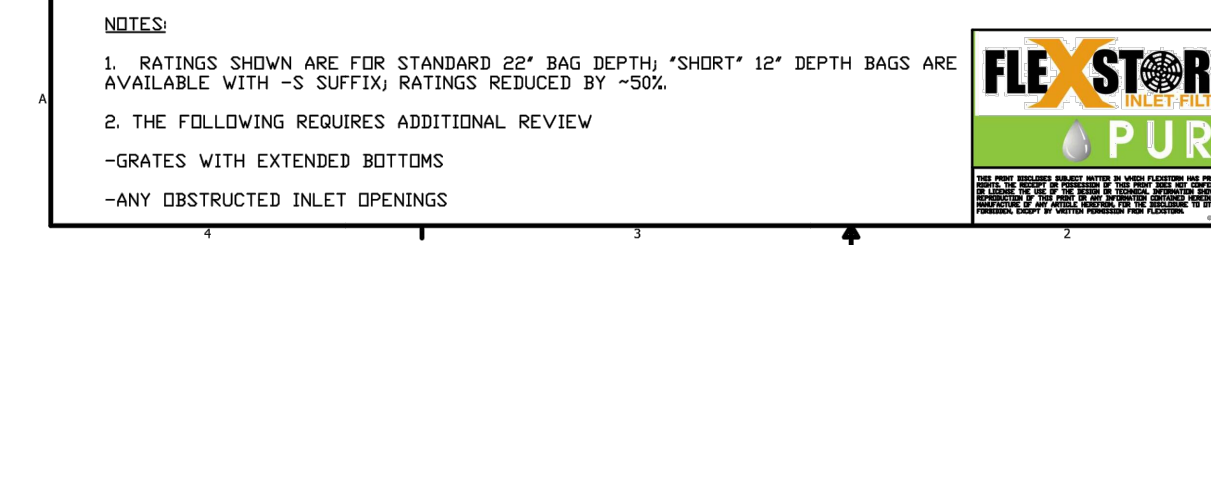
FLEXSTORM P/Ns 62MHRFX & 62MHDRFX
RD INLET TYPE: RAISED CAST IRON FRAME AND ROUND GRATE

Pure Frame with FX Bag	Frame Dimensions	Frame Rating	Frame Capacity	Frame Material	Pure Frame with FX Bag	Frame Dimensions	Frame Rating	Frame Capacity	Frame Material
62MHRFX	210 x 210	1.5	1.5	1.5	62MHDRFX	210 x 210	1.5	1.5	1.5
62MHRFX	210 x 210	2.0	2.0	2.0	62MHDRFX	210 x 210	2.0	2.0	2.0
62MHRFX	210 x 210	2.5	2.5	2.5	62MHDRFX	210 x 210	2.5	2.5	2.5
62MHRFX	210 x 210	3.0	3.0	3.0	62MHDRFX	210 x 210	3.0	3.0	3.0
62MHRFX	210 x 210	3.5	3.5	3.5	62MHDRFX	210 x 210	3.5	3.5	3.5
62MHRFX	210 x 210	4.0	4.0	4.0	62MHDRFX	210 x 210	4.0	4.0	4.0
62MHRFX	210 x 210	4.5	4.5	4.5	62MHDRFX	210 x 210	4.5	4.5	4.5
62MHRFX	210 x 210	5.0	5.0	5.0	62MHDRFX	210 x 210	5.0	5.0	5.0
62MHRFX	210 x 210	5.5	5.5	5.5	62MHDRFX	210 x 210	5.5	5.5	5.5
62MHRFX	210 x 210	6.0	6.0	6.0	62MHDRFX	210 x 210	6.0	6.0	6.0
62MHRFX	210 x 210	6.5	6.5	6.5	62MHDRFX	210 x 210	6.5	6.5	6.5
62MHRFX	210 x 210	7.0	7.0	7.0	62MHDRFX	210 x 210	7.0	7.0	7.0
62MHRFX	210 x 210	7.5	7.5	7.5	62MHDRFX	210 x 210	7.5	7.5	7.5
62MHRFX	210 x 210	8.0	8.0	8.0	62MHDRFX	210 x 210	8.0	8.0	8.0
62MHRFX	210 x 210	8.5	8.5	8.5	62MHDRFX	210 x 210	8.5	8.5	8.5
62MHRFX	210 x 210	9.0	9.0	9.0	62MHDRFX	210 x 210	9.0	9.0	9.0
62MHRFX	210 x 210	9.5	9.5	9.5	62MHDRFX	210 x 210	9.5	9.5	9.5
62MHRFX	210 x 210	10.0	10.0	10.0	62MHDRFX	210 x 210	10.0	10.0	10.0



FLEXSTORM P/Ns 62LHDFX & 62LHDFXP
RD INLET TYPE: RAISED CAST IRON FRAME AND ROUND GRATE

Pure Frame with FX Bag	Frame Dimensions	Frame Rating	Frame Capacity	Frame Material	Pure Frame with FX Bag	Frame Dimensions	Frame Rating	Frame Capacity	Frame Material
62LHDFX	210 x 210	1.5	1.5	1.5	62LHDFXP	210 x 210	1.5	1.5	1.5
62LHDFX	210 x 210	2.0	2.0	2.0	62LHDFXP	210 x 210	2.0	2.0	2.0
62LHDFX	210 x 210	2.5	2.5	2.5	62LHDFXP	210 x 210	2.5	2.5	2.5
62LHDFX	210 x 210	3.0	3.0	3.0	62LHDFXP	210 x 210	3.0	3.0	3.0
62LHDFX	210 x 210	3.5	3.5	3.5	62LHDFXP	210 x 210	3.5	3.5	3.5
62LHDFX	210 x 210	4.0	4.0	4.0	62LHDFXP	210 x 210	4.0	4.0	4.0
62LHDFX	210 x 210	4.5	4.5	4.5	62LHDFXP	210 x 210	4.5	4.5	4.5
62LHDFX	210 x 210	5.0	5.0	5.0	62LHDFXP	210 x 210	5.0	5.0	5.0
62LHDFX	210 x 210	5.5	5.5	5.5	62LHDFXP	210 x 210	5.5	5.5	5.5
62LHDFX	210 x 210	6.0	6.0	6.0	62LHDFXP	210 x 210	6.0	6.0	6.0
62LHDFX	210 x 210	6.5	6.5	6.5	62LHDFXP	210 x 210	6.5	6.5	6.5
62LHDFX	210 x 210	7.0	7.0	7.0	62LHDFXP	210 x 210	7.0	7.0	7.0
62LHDFX	210 x 210	7.5	7.5	7.5	62LHDFXP	210 x 210	7.5	7.5	7.5
62LHDFX	210 x 210	8.0	8.0	8.0	62LHDFXP	210 x 210	8.0	8.0	8.0
62LHDFX	210 x 210	8.5	8.5	8.5	62LHDFXP	210 x 210	8.5	8.5	8.5
62LHDFX	210 x 210	9.0	9.0	9.0	62LHDFXP	210 x 210	9.0	9.0	9.0
62LHDFX	210 x 210	9.5	9.5	9.5	62LHDFXP	210 x 210	9.5	9.5	9.5
62LHDFX	210 x 210	10.0	10.0	10.0	62LHDFXP	210 x 210	10.0	10.0	10.0



0	ISSUED FOR SPA	MJS	DT	MJS	DT	21.11.22
Revision		By		Appd.		YY.MM.DD

File Name:	160401672.DB	MJS	DT	MJS	DT	21.11.22
Permit-Seal		Dwn.		Chkd.		Yy.Mm.Dd

Client/Project
WESTRICH PACIFIC CORP.

MULTI-FAMILY RESIDENTIAL DEVELOPMENT
1125-1149 CYRVILLE ROAD
OTTAWA, ON, CANADA

Title
EROSION CONTROL PLAN
AND DETAIL SHEET

Project No.	Scale	0	5	15	25m
160401672	1:500				
Drawing No.	Sheet	Revision			