

Copyright Reserved
 The Contractor shall verify and be responsible for all dimensions. DO NOT scale this drawing - any errors or omissions shall be reported to Stantec without delay.
 The Copyrights to all designs and drawings are the property of Stantec. Reproduction or use for any purpose other than that authorized by Stantec is forbidden.

Legend

- L101A AREA ID
- RUNOFF COEFFICIENT
- STORM DRAINAGE AREA B.C.
- STORM DRAINAGE BOUNDARY
- DIRECTION OF OVERLAND FLOW
- DIRECTION OF EMERGENCY OVERLAND FLOW
- PROPOSED STORM MH AND SEWER
- PROPOSED CATCHBASIN MANHOLE
- PROPOSED CATCHBASIN
- PROPOSED WATTS FD-530 (OR EQUIVALENT) TO BE CONNECTED TO INTERNAL STORM SEWER PLUMBING.
- EXISTING STORM MH AND SEWER
- EXISTING CATCHBASIN
- THERMAL INSULATION ON STORM SEWER WHERE COVER IS LESS THAN 1.5m. THERMAL INSULATION ON WATERMAIN WHERE COVER IS LESS THAN 2.4m AS PER W22.
- MAXIMUM STATIC PONDING LIMITS
- 5YR AND 100YR PONDING LIMITS

- Notes**
1. INTERNAL PLUMBING AND SUMP PUMPS TO BE DESIGNED BY THE MECHANICAL CONSULTANT.
 2. THE INTERNAL PLUMBING IN BUILDING B TO ACCOMMODATE THE INDEPENDENT CONNECTIONS OF BUILDING B TO THE SANITARY, WATER AND STORM SERVICE STUBS AT BUILDING A.
 3. STORMWATER MANAGEMENT TO BE PROVIDED THROUGH A CISTERN IN EACH BUILDING. CISTERN TO BE LOCATED IN THE ASSOCIATED UNDERGROUND PARKING.
 - BUILDING 1 CISTERN A = 45.0m³ AND RELEASE RATE 32L/s PUMP RATE
 - BUILDING 2 CISTERN B = 40.0m³ AND RELEASE RATE 10L/s PUMP RATE
 - TOTAL PERMITTED RELEASE RATE FROM SITE = 72.6 L/s
 - TOTAL POST DEVELOPMENT RELEASE RATE FROM SITE= 72.3 L/s (100 YR)

Revision	By	Appd.	YY.MM.DD	
8	ISSUED FOR SPA	J.P.	P.M.	24.01.26
7	ISSUED FOR SPA	J.P.	P.M.	23.12.22
6	ISSUED FOR SPA	J.P.	P.M.	23.11.29
5	ISSUED FOR SPA	J.P.	DT/PM	23.10.08
4	ISSUED FOR SPA	J.P.	DT	23.09.01
3	ISSUED FOR SPA	J.P.	DT	23.02.27
2	ISSUED FOR SPA	J.P.	DT	22.11.29
1	ISSUED FOR SPA	J.P.	DT	22.05.25
0	ISSUED FOR SPA	M.J.S.	DT	21.11.22

Revision		By	Appd.	YY.MM.DD
8	ISSUED FOR SPA	J.P.	P.M.	24.01.26
7	ISSUED FOR SPA	J.P.	P.M.	23.12.22
6	ISSUED FOR SPA	J.P.	P.M.	23.11.29
5	ISSUED FOR SPA	J.P.	DT/PM	23.10.08
4	ISSUED FOR SPA	J.P.	DT	23.09.01
3	ISSUED FOR SPA	J.P.	DT	23.02.27
2	ISSUED FOR SPA	J.P.	DT	22.11.29
1	ISSUED FOR SPA	J.P.	DT	22.05.25
0	ISSUED FOR SPA	M.J.S.	DT	21.11.22

File Name:	MJS	DT	MJS	21.09.22
160401672.DB	Dwn.	Chkd.	Dgn.	YY.MM.DD

Permit-Seal	MJS	DT	MJS	21.09.22
	Dwn.	Chkd.	Dgn.	YY.MM.DD

Client/Project
 WESTRICH PACIFIC CORP.

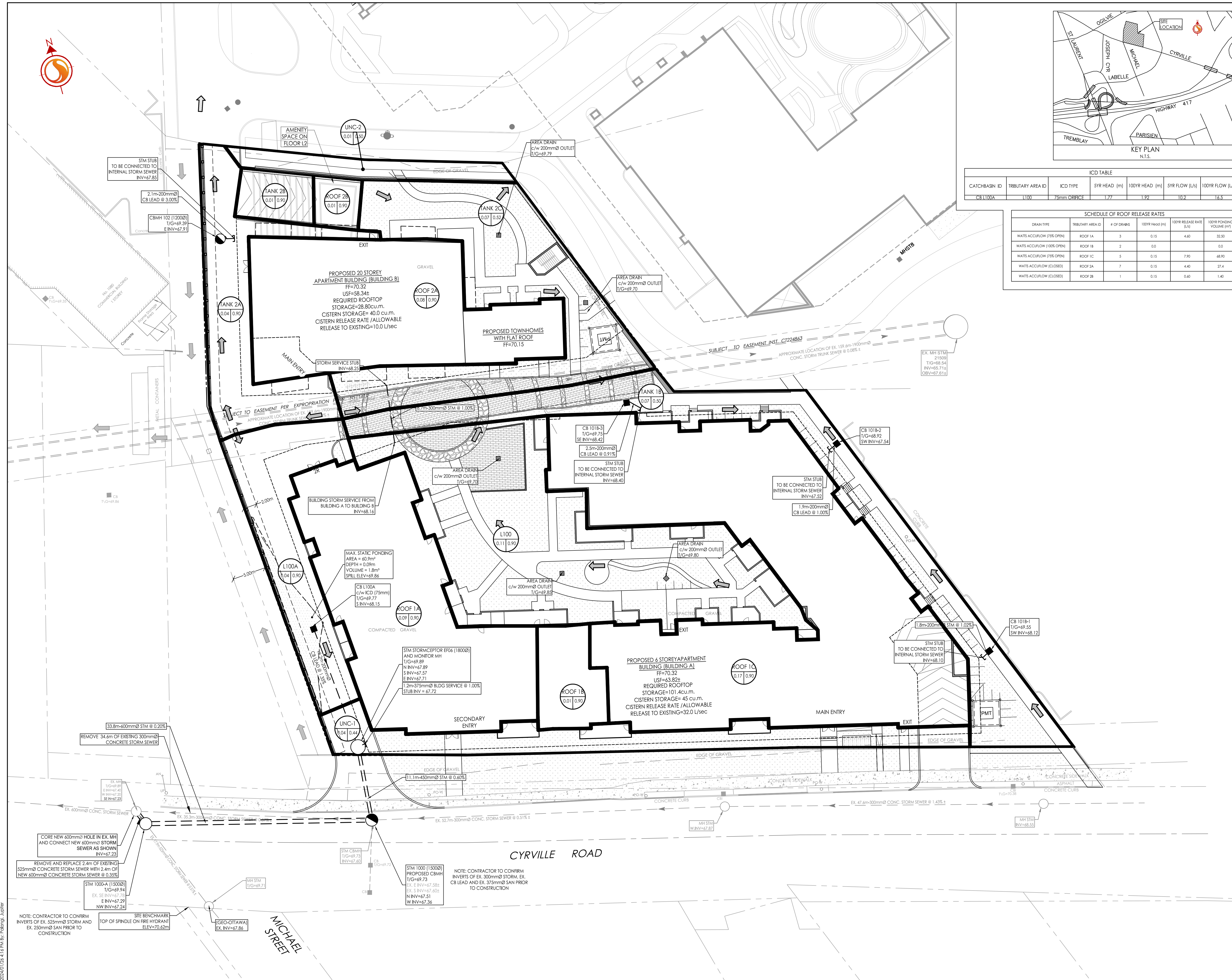
MULTI-FAMILY RESIDENTIAL DEVELOPMENT
 1125-1149 CYRVILLE ROAD
 OTTAWA, ON, CANADA

Title
 STORM DRAINAGE AREA PLAN

Project No.	Scale	0	2.5	7.5	12.5m
160401672	1:250				

Drawing No.	Sheet	Revision
SD-1	6 of 7	8

DW# 18599



ICD TABLE

CATCHBASIN ID	TRIBUTARY AREA ID	ICD TYPE	5YR HEAD (m)	100YR HEAD (m)	5YR FLOW [L/s]	100YR FLOW [L/s]
CB L100A	L100	75mm ORIFICE	1.77	1.92	10.2	16.5

SCHEDULE OF ROOF RELEASE RATES

DRAIN TYPE	TRIBUTARY AREA ID	# OF DRAINS	100YR HEAD (m)	100YR RELEASE RATE [L/s]	100YR PONDING VOLUME [m³]
WATTS ACCFLOW (PSE OPEN)	ROOF 1A	3	0.15	4.60	32.50
WATTS ACCFLOW (100% OPEN)	ROOF 1B	2	0.0	0.0	0.0
WATTS ACCFLOW (PSE OPEN)	ROOF 1C	5	0.15	7.90	68.90
WATTS ACCFLOW (CLOSED)	ROOF 2A	7	0.15	4.40	27.4
WATTS ACCFLOW (CLOSED)	ROOF 2B	1	0.15	0.60	1.40

160401672.DB 21.09.22 16:50:45 (10/24/2024) 11:25 AM 160401672.DB 21.09.22 16:50:45 (10/24/2024) 11:25 AM 160401672.DB 21.09.22 16:50:45 (10/24/2024) 11:25 AM