

Copyright Reserved

The Contractor shall verify and be responsible for all dimensions. DO NOT scale the drawing - any errors or omissions shall be reported to Stantec without delay. The Copyrights to all designs and drawings are the property of Stantec. Reproduction or use for any purpose other than that authorized by Stantec is forbidden.

Legend

- PROPOSED WATERMAIN
- PROPOSED VALVE AND VALVE BOX
- PROPOSED VALVE CHAMBER
- PROPOSED REDUCER
- PROPOSED FIRE HYDRANT
- PROPOSED SANITARY SEWER
- PROPOSED STORM SEWER
- PROPOSED CATCHBASIN MANHOLE
- PROPOSED CATCHBASIN
- PROPOSED WAITS FD-530 (OR EQUIVALENT) TO BE CONNECTED TO INTERNAL STORM SEWER PLUMBING.
- EXISTING WATERMAIN
- EXISTING VALVE AND VALVE BOX
- EXISTING VALVE CHAMBER
- EXISTING REDUCER
- EXISTING FIRE HYDRANT
- EXISTING SANITARY SEWER
- EXISTING STORM SEWER
- EXISTING CATCHBASIN MANHOLE
- EXISTING CATCHBASIN
- PROPOSED DEPRESSED CURB LOCATIONS
- PROPOSED BARRIER CURB
- PROPOSED RETAINING WALL
- THERMAL INSULATION ON STORM SEWER WHERE COVER IS LESS THAN 1.5m. THERMAL INSULATION ON WATERMAIN WHERE COVER IS LESS THAN 2.4m AS PER W22.
- WATER METER
- REMOTE WATER METER
- MONITORING POINTS (REFER TO GEOTECH. REPORT)

Notes

- FINAL METER AND REMOTE METER LOCATIONS TO BE CONFIRMED BY MECHANICAL CONSULTANT.
- THE LOCATION OF UTILITIES IS APPROXIMATE ONLY AND THE EXACT LOCATION SHOULD BE DETERMINED BY CONSULTING THE MUNICIPAL AUTHORITIES AND UTILITY COMPANIES CONCERNED. THE CONTRACTOR SHALL PROVE THE LOCATION OF UTILITIES AND SHALL BE RESPONSIBLE FOR THEIR PROTECTION AND THE IMPLEMENTATION OF ANY NECESSARY PROCEDURES CALLED FOR IN THE APPROPRIATE STANDARD AND REGULATIONS.
- INTERNAL PLUMBING AND SUMP PUMPS TO BE DESIGNED BY THE MECHANICAL CONSULTANT.
- UNDERGROUND PARKING STRUCTURE FLOOR DRAINS TO BE CONNECTED TO SANITARY SEWER SERVICE.
- THE INTERNAL PLUMBING IN BUILDING A TO ACCOMMODATE THE INDEPENDENT CONNECTIONS OF BUILDING B TO THE SANITARY, WATER AND STORM SERVICE STUBS AT BUILDING A.
- STORMWATER MANAGEMENT TO BE PROVIDED THROUGH A CISTERN IN EACH BUILDING. CISTERN TO BE LOCATED IN THE ASSOCIATED UNDERGROUND PARKING.
 - BUILDING 1 CISTERN = 45.0m³ AND RELEASE RATE 32.1% PUMP RATE
 - BUILDING 2 CISTERN = 40.0m³ AND RELEASE RATE 10.1% PUMP RATE
 - TOTAL PERMITTED RELEASE RATE FROM SITE = 72.6 L/S
 - TOTAL POST DEVELOPMENT RELEASE RATE FROM SITE = 72.3 L/S (100 YR)

Revision	By	Appd.	YY.MM.DD
6	ISSUED FOR SPA	JP	PM 23.11.29
5	ISSUED FOR SPA	JP	DT/PM 23.10.08
4	ISSUED FOR SPA	JP	DT 23.09.01
3	ISSUED FOR SPA	JP	DT 23.02.27
2	ISSUED FOR SPA	JP	DT 22.11.29
1	ISSUED FOR SPA	JP	DT 22.05.25
0	ISSUED FOR SPA	MJS	DT 21.11.22

File Name:	MJS	DT	MJS	21.09.22
160401672.DB	Dwn.	Chkd.	Dgn.	YY.MM.DD

Permit-Seal

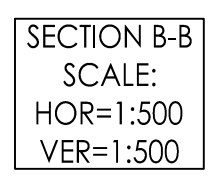
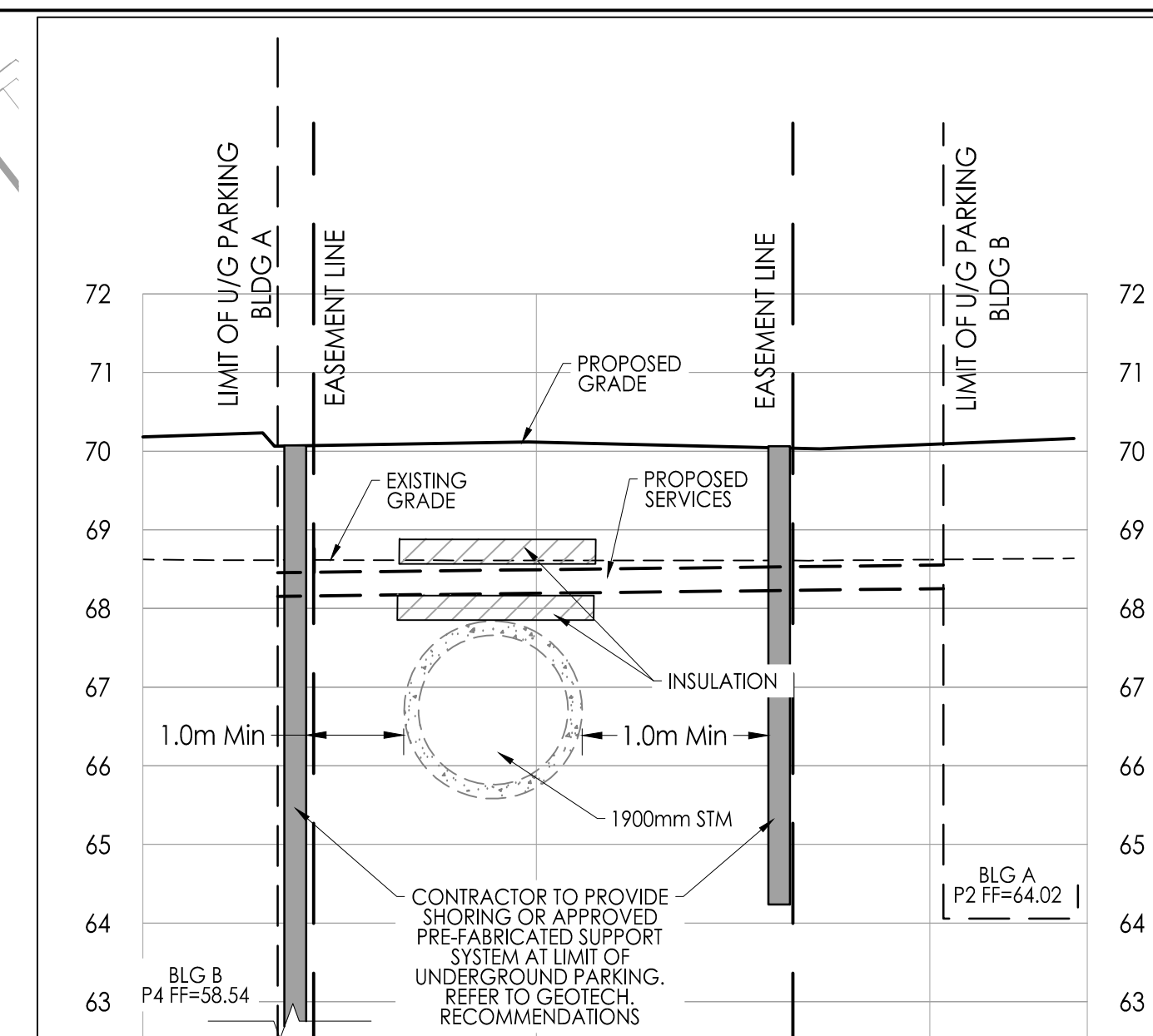
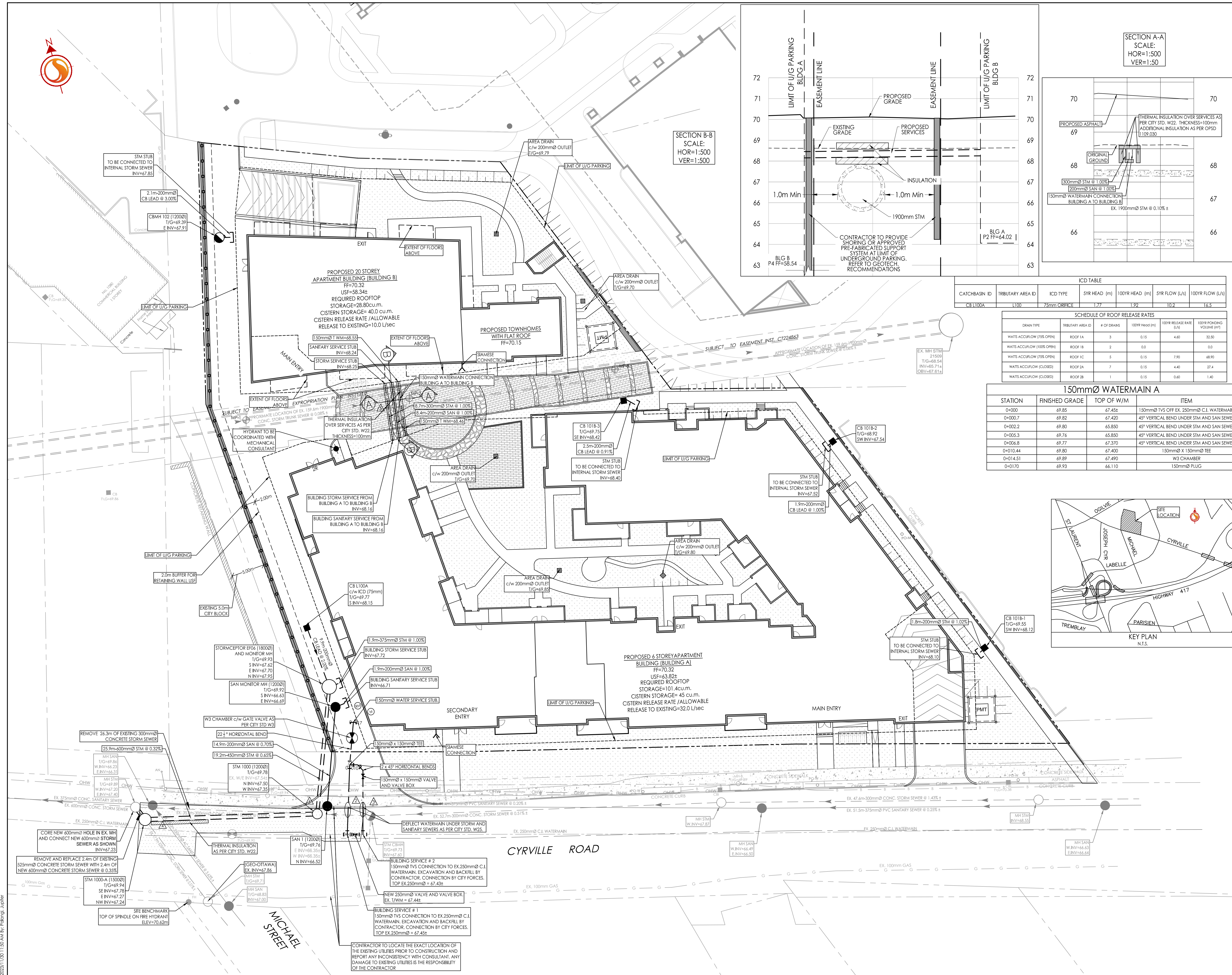
Client/Project
WESTRICH PACIFIC CORP.

MULTI-FAMILY RESIDENTIAL DEVELOPMENT
1125-1149 CYRVILLE ROAD
OTTAWA, ON, CANADA

Title
SITE SERVICING PLAN

Project No.	Scale	Sheet	Revision
160401672	1:250	3 of 8	5

Drawing No. SSP-1
Revision 5
DWG# 18599



CATCHBASIN ID	TRIBUTARY AREA ID	ICD TYPE	SYR HEAD (m)	100YR HEAD (m)	SYR FLOW (L/s)	100YR FLOW (L/s)
CB L100A	L100	75mm ORBICE	1.77	1.92	10.2	16.5

DRAIN TYPE	TRIBUTARY AREA ID	# OF DRAINS	100YR HEAD (m)	100YR RELEASE RATE (L/s)	100YR FLOODING VOLUME (m ³)
WAITS ACCU/FLOW (75% OPEN)	ROOF 1A	3	0.15	4.60	32.50
WAITS ACCU/FLOW (100% OPEN)	ROOF 1B	2	0.0	0.0	0.0
WAITS ACCU/FLOW (75% OPEN)	ROOF 1C	5	0.15	7.90	48.90
WAITS ACCU/FLOW (100% OPEN)	ROOF 2A	7	0.15	4.40	27.4
WAITS ACCU/FLOW (100% OPEN)	ROOF 2B	1	0.15	0.60	1.40

STATION	FINISHED GRADE	TOP OF W/M	ITEM
0+000	69.85	67.45E	150mmØ TVS OFF EX. 250mmØ C.I. WATERMAIN
0+000.7	69.82	67.400	45° VERTICAL BEND UNDER STM AND SAN SEWER
0+002.2	69.80	65.850	45° VERTICAL BEND UNDER STM AND SAN SEWER
0+005.3	69.76	65.850	45° VERTICAL BEND UNDER STM AND SAN SEWER
0+006.8	69.77	67.370	45° VERTICAL BEND UNDER STM AND SAN SEWER
0+010.44	69.80	67.400	150mmØ X 150mmØ TEE
0+014.51	69.89	67.490	W3 CHAMBER
0+0170	69.93	66.110	150mmØ PLUG

