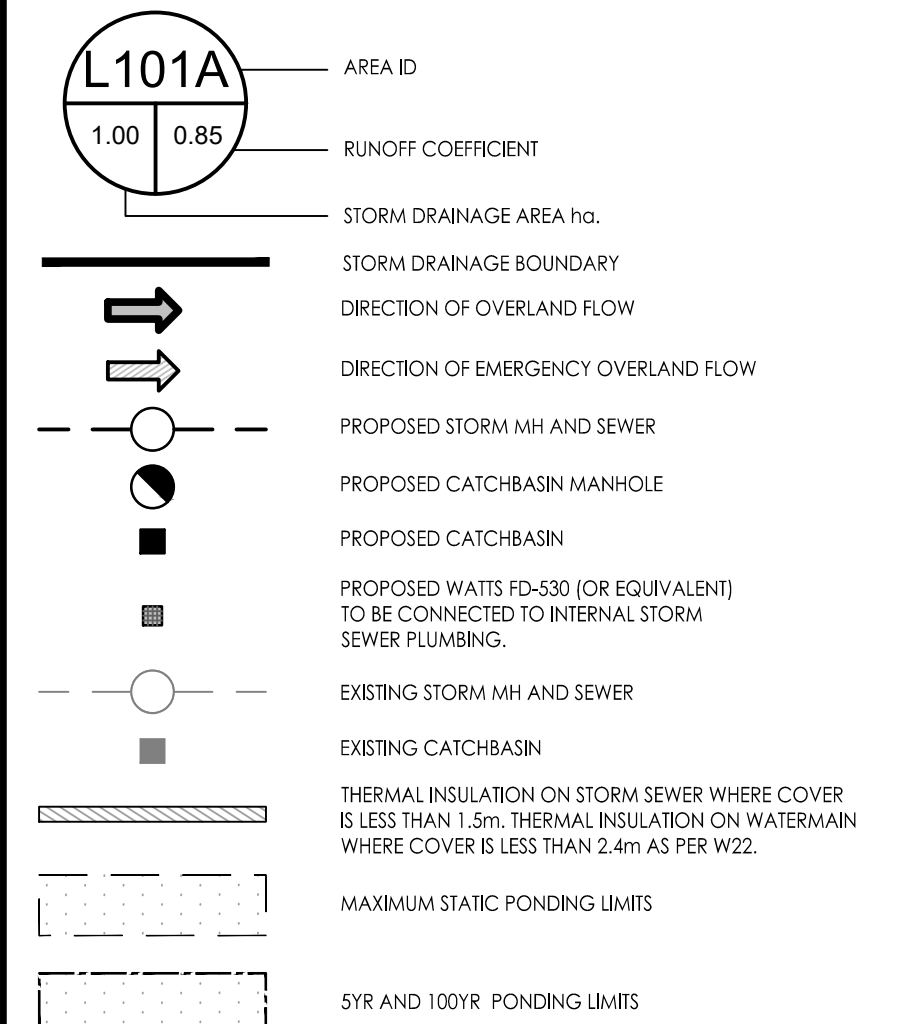


**Copyright Reserved**

The Contractor shall verify and be responsible for all dimensions. DO NOT scale the drawing - any errors or omissions shall be reported to Stantec without delay. The Copyrights to all designs and drawings are the property of Stantec. Reproduction or use for any purpose other than that authorized by Stantec is forbidden.

**Legend**



**Notes**

- INTERNAL PLUMBING AND SUMP PUMPS TO BE DESIGNED BY THE MECHANICAL CONSULTANT.
- THE INTERNAL PLUMBING IN BUILDING A TO ACCOMMODATE THE INDEPENDENT CONNECTIONS OF BUILDING B TO THE SANITARY, WATER AND STORM SERVICE STUBS AT BUILDING A.
- STORMWATER MANAGEMENT TO BE PROVIDED THROUGH A CISTERN IN EACH BUILDING. CISTERN TO BE LOCATED IN THE ASSOCIATED UNDERGROUND PARKING.
  - BUILDING 1 CISTERN A = 45.0m<sup>3</sup> AND RELEASE RATE 32L/s PUMP RATE
  - BUILDING 2 CISTERN B = 40.0m<sup>3</sup> AND RELEASE RATE 10L/s PUMP RATE
  - TOTAL PERMITTED RELEASE RATE FROM SITE = 72.6 L/s
  - TOTAL POST DEVELOPMENT RELEASE RATE FROM SITE = 72.3 L/s (100 YR)

Revision	By	Appd.	YY.MM.DD
4	ISSUED FOR SPA	JP	DT 23.09.01
3	ISSUED FOR SPA	JP	DT 23.02.27
2	ISSUED FOR SPA	JP	DT 22.11.29
1	ISSUED FOR SPA	JP	DT 22.05.25
0	ISSUED FOR SPA	MJS	DT 21.11.22

File Name:	MJS	DT	MJS	21.09.22
160401672.DB	Dwn.	Chkd.	Dgn.	YY.MM.DD

**Permit-Seal**

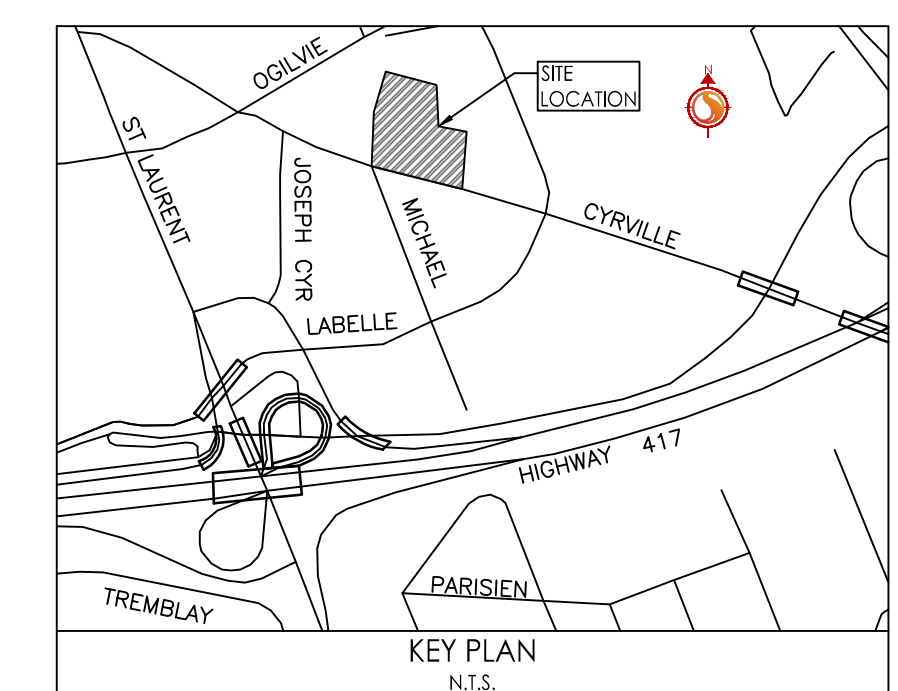
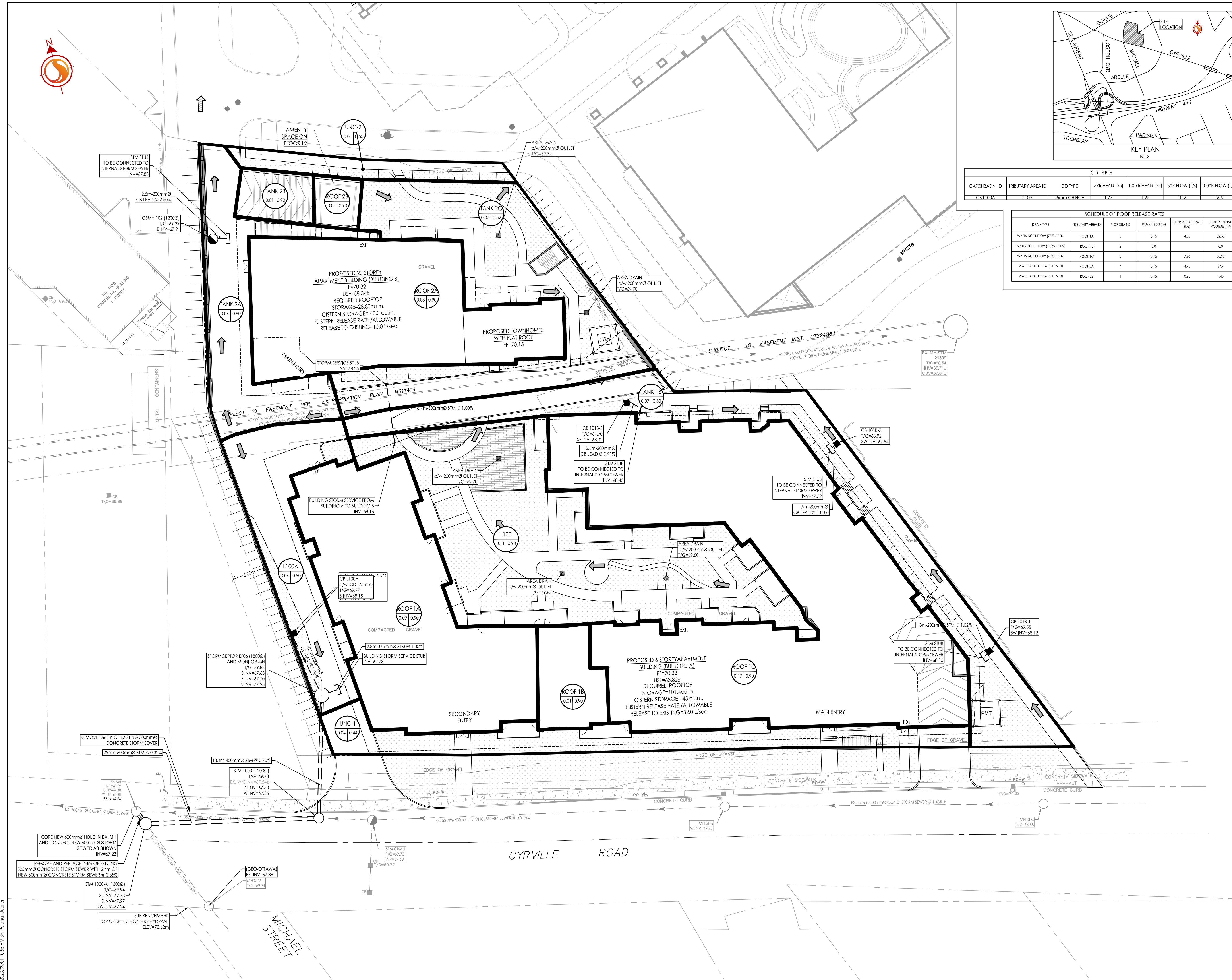


Client/Project  
**WESTRICH PACIFIC CORP.**

MULTI-FAMILY RESIDENTIAL DEVELOPMENT  
1125-1149 CYRVILLE ROAD  
OTTAWA, ON, CANADA

Title  
**STORM DRAINAGE AREA PLAN**

Project No.	Scale	Sheet	Revision
160401672	1:250	6 of 7	4



CATCHBASIN ID	TRIBUTARY AREA ID	ICD TYPE	SYR HEAD (m)	100YR HEAD (m)	SYR FLOW (L/s)	100YR FLOW (L/s)
CB L100A	L100	75mm ORIFICE	1.77	1.92	10.2	16.5

DRAIN TYPE	TRIBUTARY AREA ID	# OF DRAINS	100YR HEAD (m)	100YR RELEASE RATE (L/s)	100YR PONDING VOLUME (m <sup>3</sup> )
WATS ACCFLOW (PSE OPEN)	ROOF 1A	3	0.15	4.60	32.50
WATS ACCFLOW (100% OPEN)	ROOF 1B	2	0.0	0.0	0.0
WATS ACCFLOW (PSE OPEN)	ROOF 1C	5	0.15	7.90	68.90
WATS ACCFLOW (CLOSED)	ROOF 2A	7	0.15	4.40	27.4
WATS ACCFLOW (CLOSED)	ROOF 2B	1	0.15	0.60	1.40

2023/09/06 10:56 AM C:\Users\p.moroz\OneDrive - Stantec\Documents\160401672.DWG  
 2023/09/06 10:56 AM C:\Users\p.moroz\OneDrive - Stantec\Documents\160401672.DWG