

Legend

- R100A** SANITARY DRAINAGE AREA ID#
- 0.31 | 50** POPULATION COUNT
- SANITARY DRAINAGE AREA ha.
- G100A** SANITARY DRAINAGE AREA ID#
- 0.11 | INFL** INFILTRATION RATE OF 0.33 L/s/Ha APPLIED
- SANITARY DRAINAGE AREA ha.
- SANITARY DRAINAGE AREA
- PROPOSED SANITARY MH AND SEWER
- EXISTING SANITARY MH AND SEWER

Notes

SANITARY STATS	
<b>BUILDING A</b>	
71 - 1 BEDROOM UNITS @ 1.4 PPU = 98 PEOPLE	
127 - 2 BEDROOM UNITS @ 2.1 PPU = 267 PEOPLE	
5 - 3 BEDROOM UNITS @ 3.1 PPU = 16 PEOPLE	
6 - STUDIO UNITS @ 1.4 PPU = 8 PEOPLE	
<b>BUILDING B</b>	
77 - 1 BEDROOM UNITS @ 1.4 PPU = 108 PEOPLE	
78 - 2 BEDROOM UNITS @ 2.1 PPU = 164 PEOPLE	
2 - TOWNHOUSES @ 2.7 PPU = 5	
<b>TOTAL POPULATION = 667</b>	

Rev	Description	By	Appd.	YY.MM.DD
3	ISSUED FOR SPA	JP	DT	23.02.27
2	ISSUED FOR SPA	JP	DT	22.11.29
1	ISSUED FOR SPA	JP	DT	22.05.25
0	ISSUED FOR SPA	MJS	DT	21.11.22

File Name:	MJS	DT	MJS	21.09.22
160401672.DB	Dwn.	Chkd.	Dgn.	YY.MM.DD

Permit-Seal



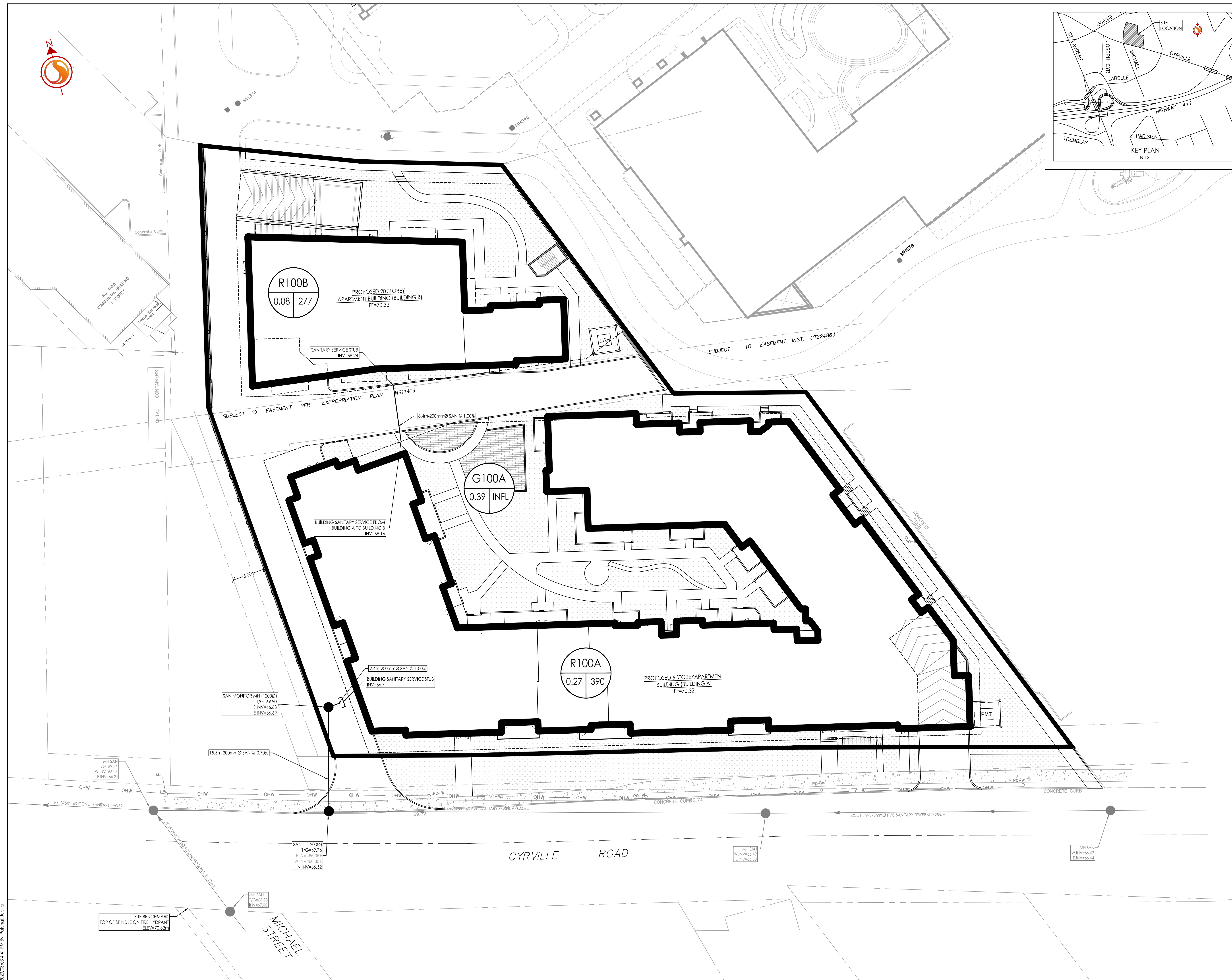
Client/Project  
WESTRICH PACIFIC CORP.

MULTI-FAMILY RESIDENTIAL DEVELOPMENT  
1125-1149 CYRVILLE ROAD  
OTTAWA, ON, CANADA

Title  
SANITARY DRAINAGE AREA PLAN

Project No.	Scale	0	2.5	7.5	12.5m
160401672	1:250				

Drawing No.	Sheet	Revision
SA-1	7 of 7	3



W:\Projects\160401672\_Design\Drawings\160401672\_DSA.dwg  
 2023/03/03 14:01 P.M. P. MOROZ  
 ORIGINAL SHEET - ARCH D