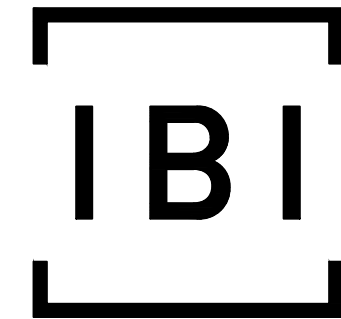
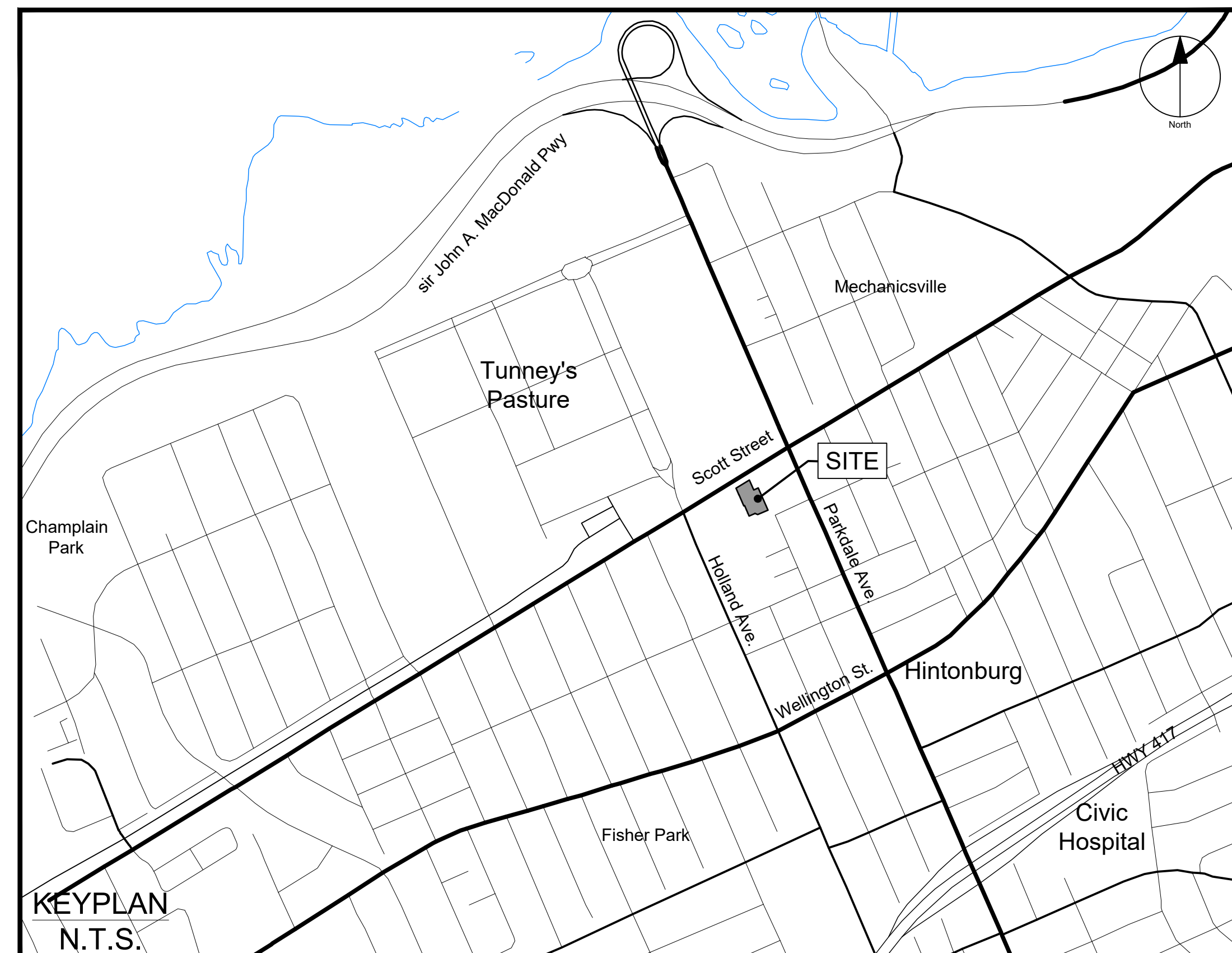


EVOKE

1546 Scott Street, Ottawa



IBI GROUP
400 – 333 Preston Street
Ottawa ON K1S 5N4 Canada
tel 613 225 1311 fax 613 225 9868
ibigroup.com

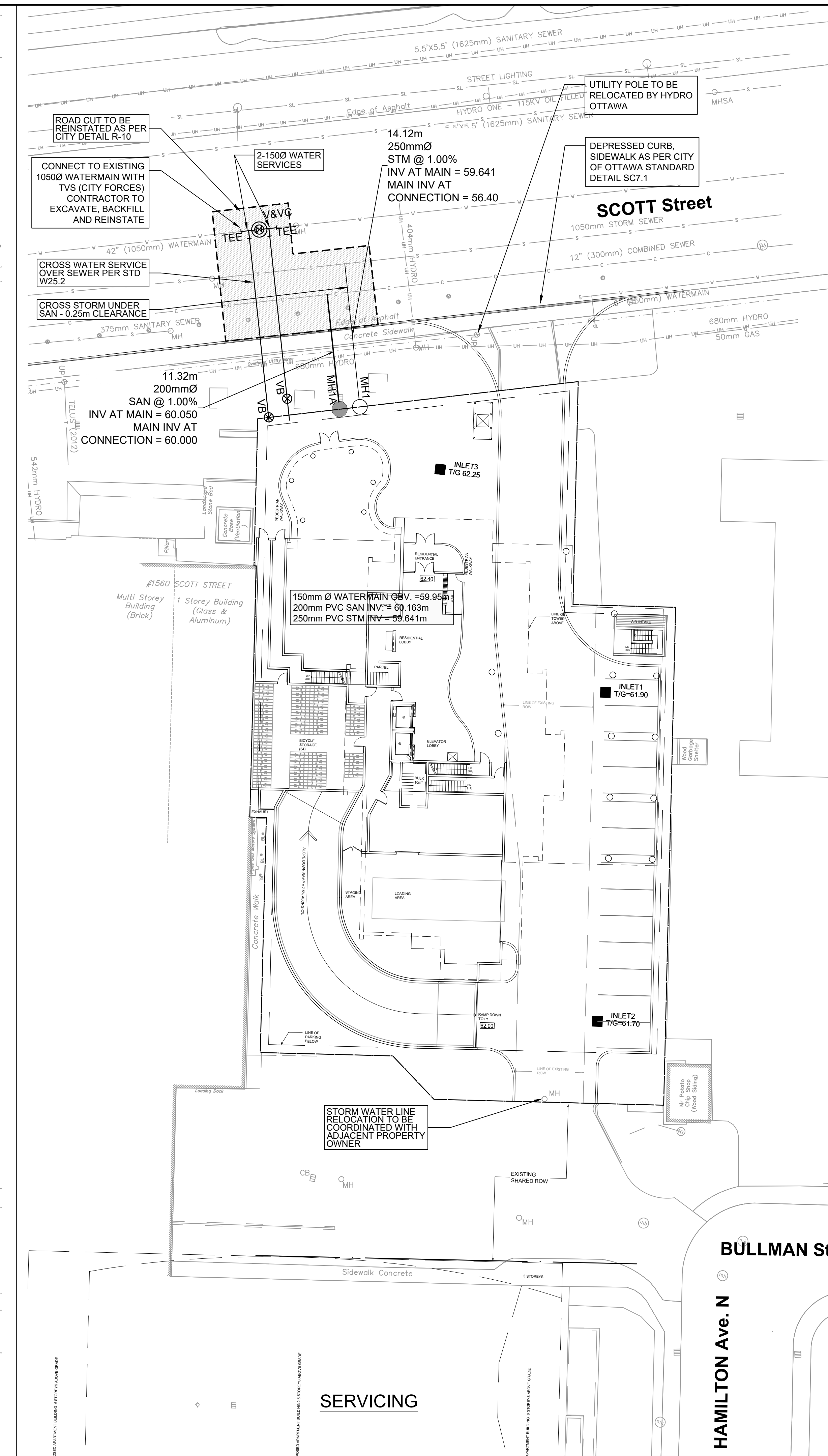
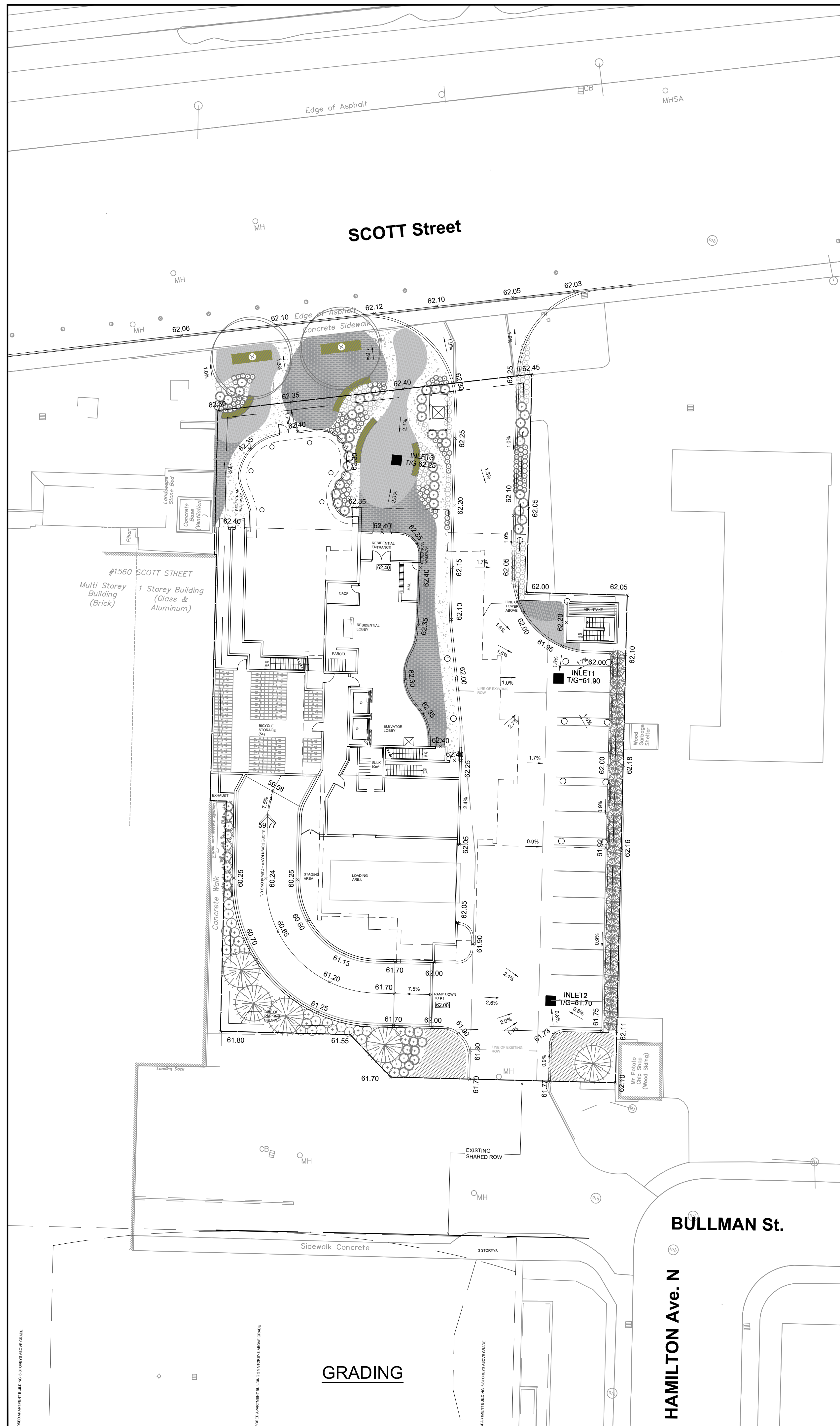


Sheet List Table	
Sheet Number	Sheet Title
-	Cover
C-001	GRADING GENERAL PLAN OF SERVICES
C-500	STORM DRAINAGE AREA PLAN
C-900	EROSION AND SEDIMENT CONTROL PLAN

Reid's Heritage Properties



CONTRACT NO. 132902



LEGEND

F.F. = 80.50	FINISHED FLOOR ELEVATION
—	DEPRESSED CURB
⊙	WATER METER (SEE MECH. DRAWG. FOR EXACT LOCATION)
⊙	REMOTE WATER METER (SEE MECH. DRAWG. FOR EXACT LOCATION)
⊙	SIAMSESE CONNECTIONS (SEE MECH. DRAWG. FOR EXACT LOCATION)
—	GAS SERVICE
—	RETAINING WALL C/W TOP OF WALL AND GRASS GRADE
V&V	VALVE AND VALVE BOX
V&V	VALVE AND VALVE CHAMBER
—	WATER SERVICE
—	SANITARY SEWER SERVICE
—	STORM SEWER SERVICE
—	EXISTING CURB
—	EXISTING CATCHBASIN
—	EXISTING WATER VALVE
—	EXISTING LAMP STANDARD
—	EXISTING UTILITY POLE
—	EXISTING FIRE HYDRANT
—	EXISTING MANHOLE
—	EXISTING SIGN
—	EXISTING BOLLARDS
—	EXISTING DECIDUOUS TREE
—	EXISTING SANITARY SEWER
—	EXISTING STORM SEWER
—	EXISTING WATERMAIN
—	EXISTING GAS LINE
—	EXISTING HYDRO EXISTING
—	EXISTING OVERHEAD UTILITY WIRES
—	EXISTING COMBINED SEWER
—	EXISTING STREET LIGHTING

NOTES:

1. ALL WORKS TO BE COMPLETED AS PER CURRENT CITY OF OTTAWA STANDARDS AND ONTARIO PROVINCIAL STANDARDS AND SPECIFICATIONS.
2. SEWER LATERALS TO BE PVC DR 35.
3. WATER MAIN AND SERVICES TO BE PVC DR 18 CL 150. MINIMUM COVER OF 2.4m FOR WATER SERVICE IS REQUIRED. USE THERMAL INSULATION AS PER CITY STANDARDS WHEN COVER IS LESS THAN 2.4m. WATER MAIN AND SERVICES TO HAVE RESTRAINTS AND THRUST BLOCKS AS PER CITY STD W23, W25.5 AND W25.6. NEW WATER MAIN TO HAVE TRACING WIRE PER STD W36.
4. ALL SERVICE LATERAL AND SURFACE RESTORATION WORK IN ACCORDANCE WITH CURRENT CITY OF OTTAWA STANDARDS AND SPECIFICATIONS.
5. FULL PORT BACKWATER VALVE IS REQUIRED ON BOTH THE SANITARY AND STORM SERVICE CONNECTIONS.
6. WATER SERVICE CHLORINATION AND TESTING TO BE COMPLETED BY CITY FORCES.
7. BUILDING INFORMATION TAKEN FROM TREGEBVO COGAN ARCHITECTS DRAWINGS.
8. AN EROSION AND SEDIMENTATION CONTROL PLAN WILL BE IMPLEMENTED ON THIS SITE. AS A MINIMUM THAT PLAN WILL INCLUDE A LIGHT DUTY SILT FENCE BARRIER TO CPSD STANDARD 219.110 SURROUNDING THE SITE WHERE PRACTICAL AND SILT SACKS FITTED UNDER EXISTING STREET CATCH BASINS.
9. ALL SHOWN UTILITIES ARE APPROXIMATE AND ARE TO BE FIELD VERIFIED BY CONTRACTOR. ANY DISCREPANCIES ARE TO BE REPORTED TO IBI GROUP PRIOR TO CONTRACTOR MOBILIZING TO SITE.
10. CONTRACTOR RESPONSIBLE TO SUPPORT EXISTING UTILITIES THAT MAY BE AFFECTED DURING CONSTRUCTION.
11. EXISTING CURBS AND SIDEWALKS ARE TO BE REMOVED AND REPLACED AS NOTED ON THE DRAWINGS.
12. THE CONTRACTOR SHALL IMPLEMENT BEST MANAGEMENT PRACTICES, TO PROVIDE FOR PROTECTION OF THE AREA DRAINAGE SYSTEM AND THE RECEIVING WATER COURSE. DURING CONSTRUCTION ACTIVITIES THIS INCLUDES LIMITING THE AMOUNT OF EXPOSED SOIL, USING FILTER CLOTH UNDER THE GRATES OF CATCHBASINS AND MANHOLES AND INSTALLING SILT FENCES AND EFFECTIVE SEDIMENT TRAPS. THE CONTRACTOR ACKNOWLEDGES THAT FAILURE TO IMPLEMENT APPROPRIATE EROSION AND SEDIMENT CONTROL MEASURES MAY BE SUBJECT TO PENALTIES IMPOSED BY ANY APPLICABLE REGULATORY AGENCIES.
13. FOR GEOTECHNICAL INFORMATION SEE REPORT 47-CEI-R1BY YURI MENDEZ ENGINEERING.
15. CLAY SEAL TO BE INSTALLED IN SERVICE TRENCHES BETWEEN CONNECTION POINT AND CAP.

CLIENT
Reid's Heritage Properties
 1515 Gordon Street, Suite 203, Guelph, ON, N1L 1C9

COPYRIGHT
 This drawing has been prepared solely for the intended use. Any reproduction or distribution for any purpose other than authorized by IBI Group is forbidden. When dimensions shall have precedence over scaled dimensions, Contractors shall verify and be responsible for all dimensions and conditions on the job, and IBI Group shall be informed of any variations from the dimensions and conditions shown on the drawing. Shop drawings shall be submitted to IBI Group for general confirmation before proceeding with fabrication.

IBI Group Professional Services (Canada) Inc.
 is a member of the IBI Group of companies.

ISSUES

No.	DESCRIPTION	DATE
1	ISSUED FOR SPA	2021-11-24

KEY PLAN

CONSULTANTS

SCALE: 1:250

SEAL

IBI GROUP
 Suite 400 - 333 Preston Street
 Ottawa ON K1S 5N4 Canada
 Tel: 613 225 1311 / 613 241 3300 Fax: 613 225 9868
 ibigroup.com

PROJECT
EVOKE
 1546 Scott Street, Ottawa

PROJECT NO:
 132902

DRAWN BY:
 D.D.

PROJECT MGR:
 D.G.Y.

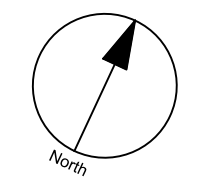
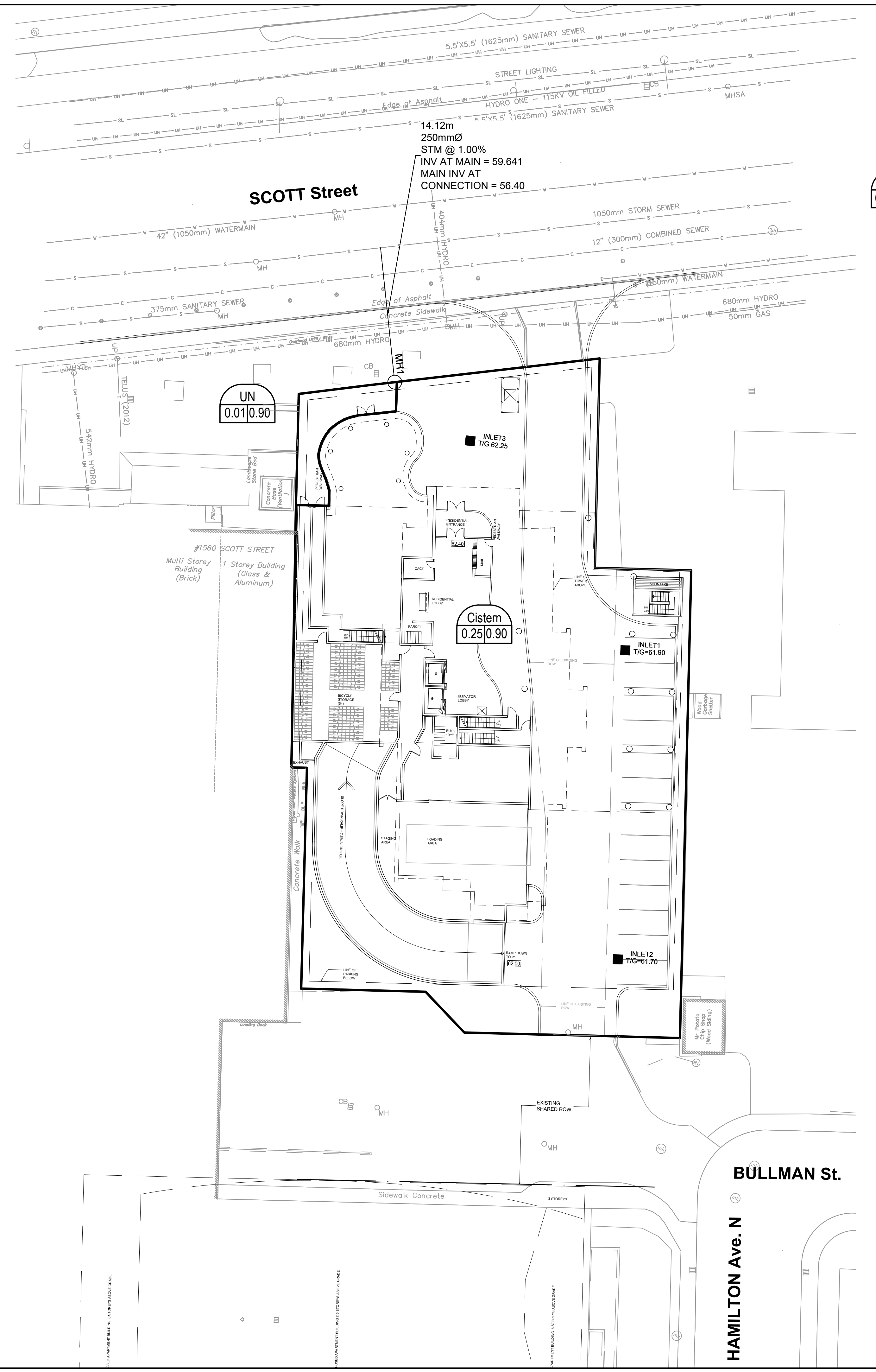
CHECKED BY:
 J.B.

APPROVED BY:
 J.B.

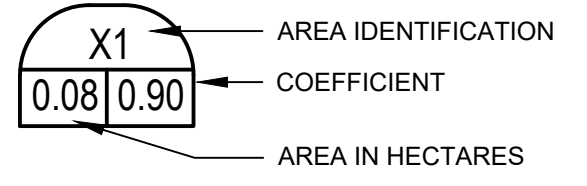
SHEET TITLE
GRADING PLAN
GENERAL PLAN OF SERVICES

SHEET NUMBER
C-001

ISSUE
1



LEGEND:



CLIENT

COPYRIGHT
 This drawing has been prepared solely for the intended use, thus any reproduction or distribution for any purpose other than authorized by IBI Group is forbidden. Written dimensions shall have precedence over scaled dimensions. Contractors shall verify and be responsible for all dimensions and conditions on the job, and IBI Group shall be informed of any variations from the dimensions and conditions shown on the drawing. Shop drawings shall be submitted to IBI Group for general confirmation before proceeding with fabrication.

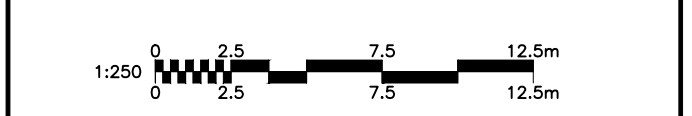
IBI Group Professional Services (Canada) Inc.
 is a member of the IBI Group of companies.

ISSUES		
No.	DESCRIPTION	DATE
1	ISSUED FOR SPA	2021-11-24

SEE 010 FOR NOTES, LEGEND, CB TABLE, STREET SECTIONS AND DETAILS



CONSULTANTS



SEAL

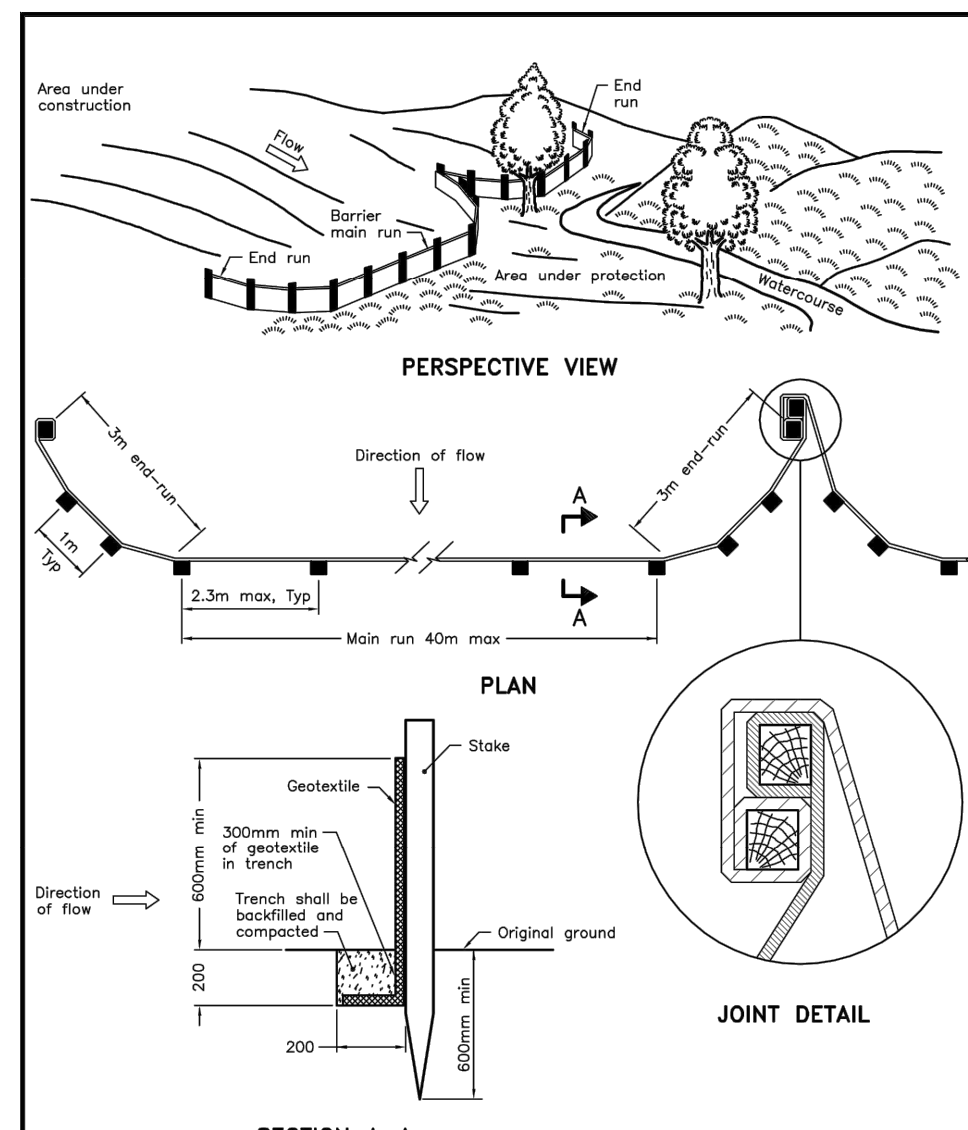
IBI GROUP
 Suite 400 - 333 Preston Street
 Ottawa ON K1S 5N4 Canada
 Tel: 613 225 1311 / 613 241 3300 Fax: 613 225 9868
 ibigroup.com

PROJECT
EVOKE
 1546 Scott Street, Ottawa

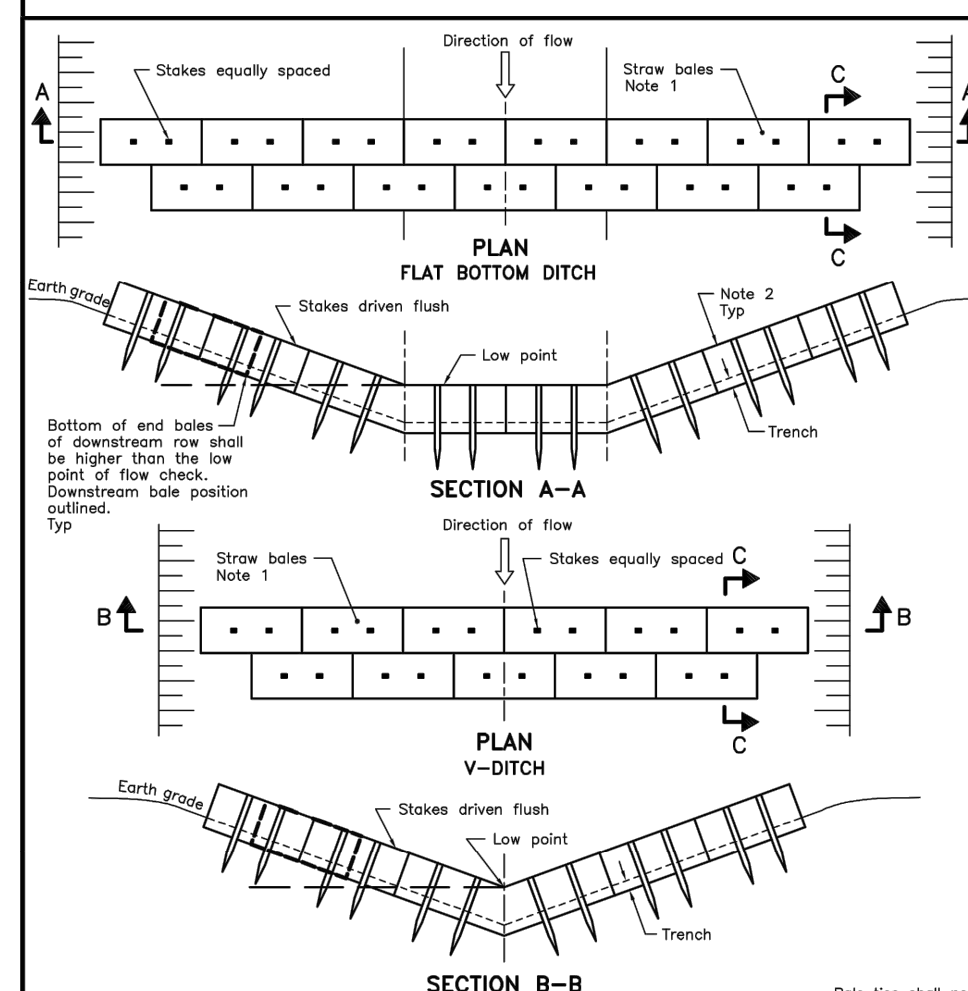
PROJECT NO: 132902
DRAWN BY: D.D.
CHECKED BY: J.B.
PROJECT MGR: D.G.Y.
APPROVED BY: J.B.

SHEET TITLE
STORM DRAINAGE AREA PLAN

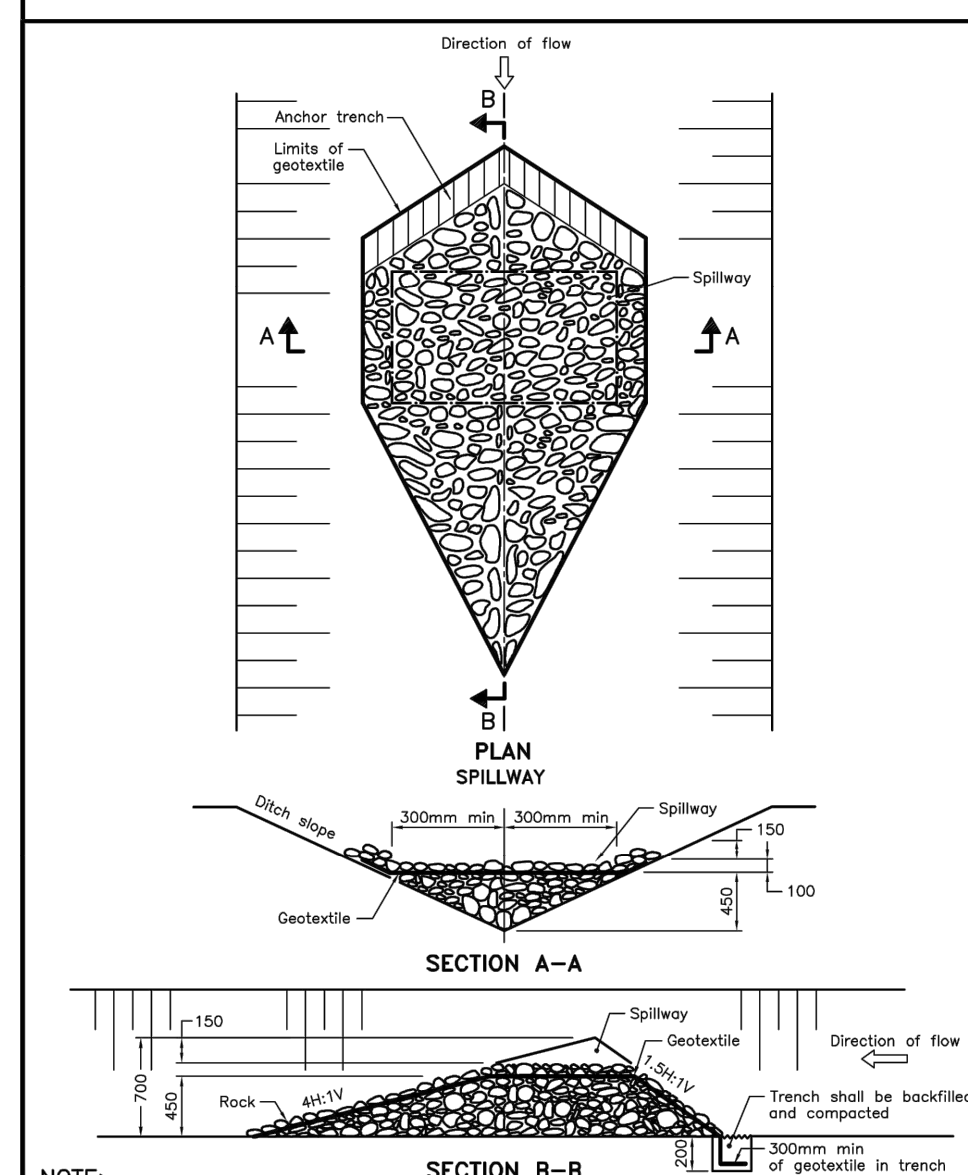
SHEET NUMBER C-500 **ISSUE** 1



SECTION A-A
NOTE: A All dimensions are in millimetres unless otherwise shown.
ONTARIO PROVINCIAL STANDARD DRAWING Nov 2015 Rev 2
LIGHT-DUTY SILT FENCE BARRIER
OPSD 219.110



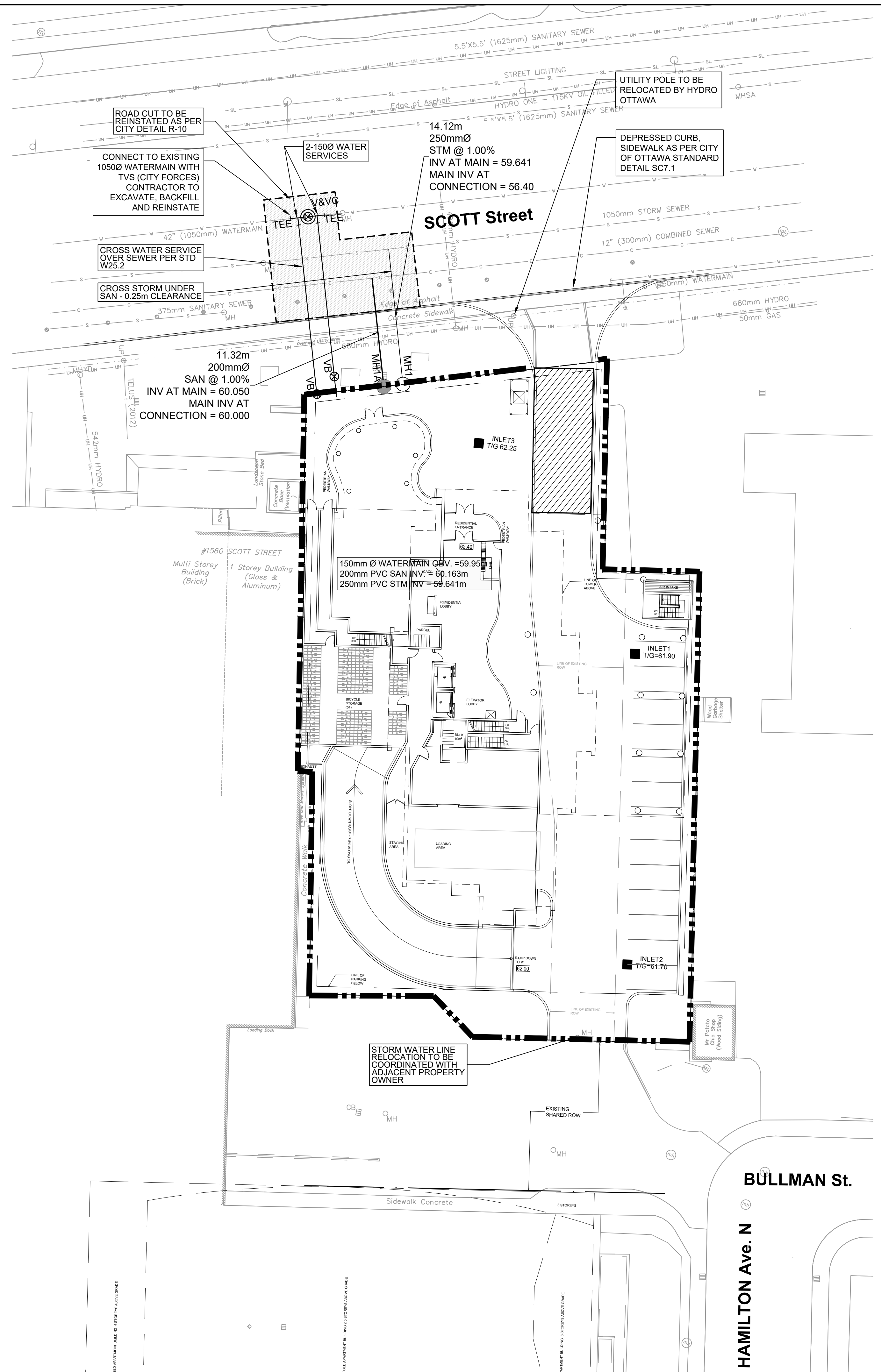
SECTION A-A
SECTION B-B
NOTES:
1 Number of bales varies and shall suit ditch.
2 Straw bales shall be butted tightly against adjoining bales and shaped to conform to the sides of the ditch to prevent water flow through barrier.
A All dimensions are in millimetres unless otherwise shown.
ONTARIO PROVINCIAL STANDARD DRAWING Nov 2015 Rev 2
STRAW BALE FLOW CHECK DAM
OPSD 219.180



SECTION A-A
NOTE: A All dimensions are in millimetres unless otherwise shown.
ONTARIO PROVINCIAL STANDARD DRAWING Nov 2015 Rev 2
TEMPORARY ROCK FLOW CHECK DAM V-DITCH
OPSD 219.210

NOTES:
THE CONTRACTOR SHALL IMPLEMENT BEST MANAGEMENT PRACTICES, TO PROVIDE FOR PROTECTION OF THE AREA DRAINAGE SYSTEM AND THE RECEIVING WATERCOURSE, DURING CONSTRUCTION ACTIVITIES. THE CONTRACTOR ACKNOWLEDGES THAT FAILURE TO IMPLEMENT APPROPRIATE EROSION AND SEDIMENT CONTROL MEASURES MAY BE SUBJECT TO PENALTIES IMPOSED BY ANY APPLICABLE REGULATORY AGENCY.
1. SILT FENCE TO BE ERECTED PRIOR TO EARTH WORKS BEING COMMENCED. SILT FENCE TO BE MAINTAINED UNTIL VEGETATION IS ESTABLISHED OR UNTIL START OF SUBSEQUENT PHASE.
2. SILT SACK TO BE PLACED AND MAINTAINED UNDER COVER OF ALL CATCHBASINS. GEOTEXTILE SILT SACK IN STREET CBs TO REMAIN UNTIL ALL CURBS ARE CONSTRUCTED. GEOTEXTILE FABRIC IN RYCBs TO REMAIN UNTIL VEGETATION IS ESTABLISHED. ALL CATCHBASINS TO BE REGULARLY INSPECTED AND CLEANED, AS NECESSARY, UNTIL SOD AND CURBS ARE CONSTRUCTED.
3. WORKS NOTED ABOVE ARE TO BE INSTALLED, INSPECTED, MAINTAINED AND ULTIMATELY REMOVED BY SERVICING CONTRACTOR.
4. THIS IS A "LIVING DOCUMENT" AND MAY BE MODIFIED IN THE EVENT THE PROPOSED CONTROL MEASURES ARE INSUFFICIENT
5. SEE DRAWING C-010 FOR ADDITIONAL DETAILS AND NOTES.

LEGEND:
- - - - - LIGHT DUTY SILT FENCE AS PER OPSD-219.110
- - - - - SNOW FENCE
- - - - - STRAW BALE CHECK DAM AS PER OPSD-219.180
- - - - - ROCK CHECK DAM AS PER OPSD-219.210
- - - - - SILT SACK PLACED UNDER EXISTING CB COVER
- - - - - TEMPORARY MUD MAT 0.15m THICK 50mm CLEAR STONE ON NON WOVEN FILTER CLOTH

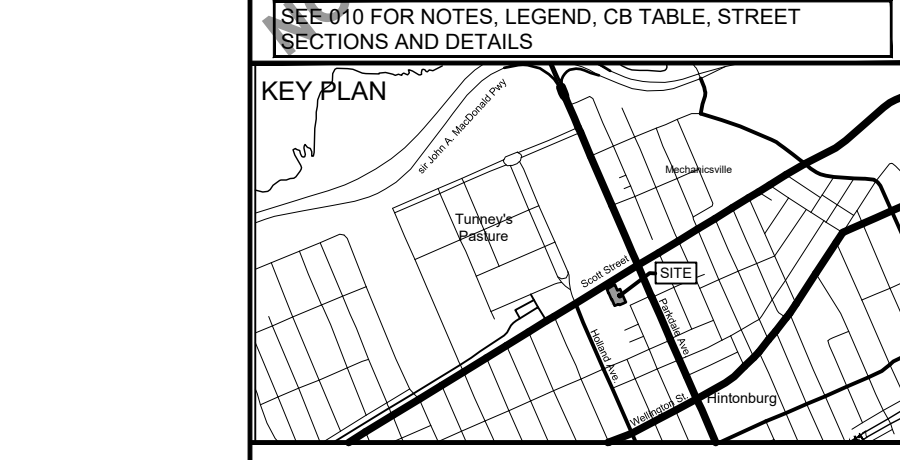


CLIENT
REID'S
Heritage Properties

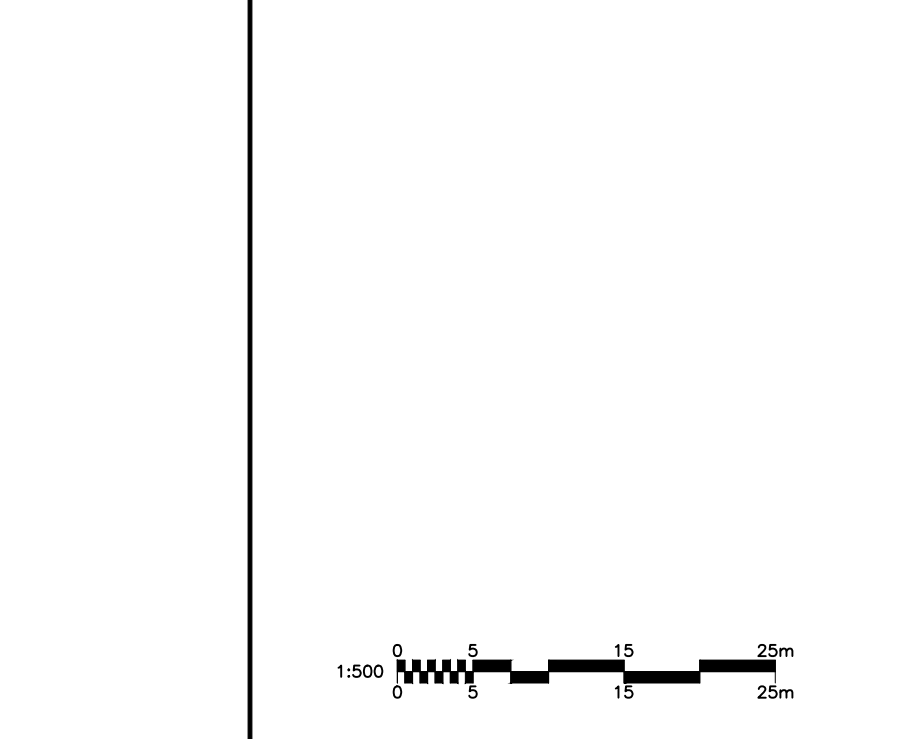
COPYRIGHT
This drawing has been prepared solely for the intended use, thus any reproduction or distribution for any purpose other than authorized by IBI Group is forbidden. Written dimensions shall have precedence over scaled dimensions. Contractors shall verify and be responsible for all dimensions and conditions on the job, and IBI Group shall be informed of any variations from the dimension and conditions shown on the drawing. Shop drawings shall be submitted to IBI Group for general concurrence before proceeding with fabrication.
IBI Group Professional Services (Canada) Inc.
is a member of the IBI Group of companies.

ISSUES

No.	DESCRIPTION	DATE
1	ISSUED FOR SPA	2021-11-24



CONSULTANTS



SEAL
LICENSED PROFESSIONAL ENGINEER
J.D. K. Yarnopoulos
2021/11/24
PROVINCE OF ONTARIO

PROJECT
EVOKE
1546 Scott Street, Ottawa

PROJECT NO: 132902
DRAWN BY: D.D.
PROJECT MGR: D.G.Y.

CHECKED BY: J.B.
APPROVED BY: J.B.

SHEET TITLE
EROSION AND SEDIMENT CONTROL PLAN

SHEET NUMBER C-900
ISSUE 1

CITY FILE No. D07-XX-XX-XXXX
Scale Check
File Location: W:\132902_1546_Scott_0_Production\07_02_Design\04_Civil\Sheets\C-900 EROSION AND SEDIMENT CONTROL PLAN.dwg
Last Saved: November 25, 2021, 9:15:49 AM by Denis Dore
Printed: Thursday, November 25, 2021, 9:15:49 AM by Denis Dore