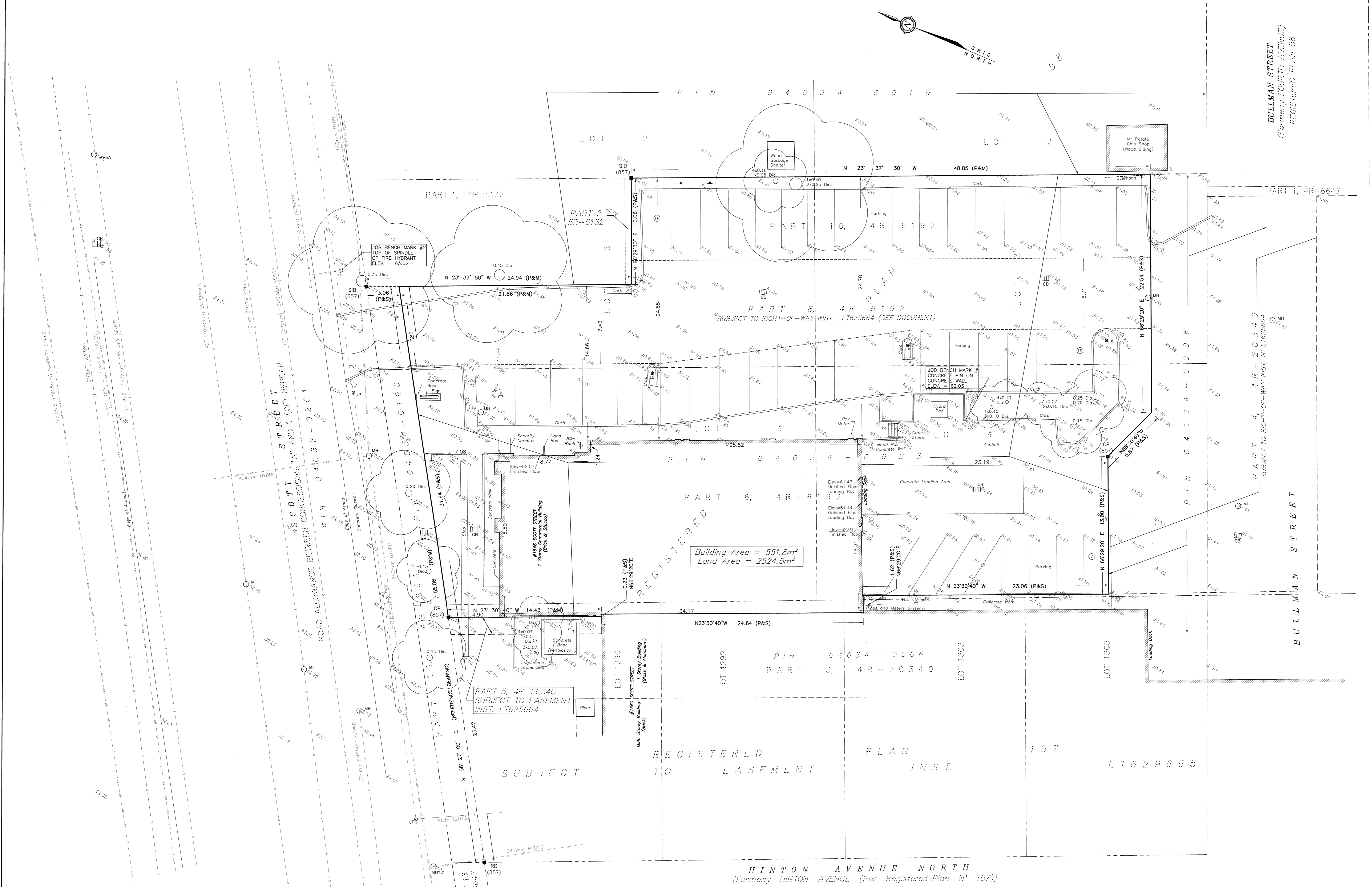


**METRIC**  
DISTANCES AND ELEVATIONS SHOWN ON THIS PLAN ARE IN METRES  
AND CAN BE CONVERTED TO FEET BY DIVIDING BY 0.3048



1546 SCOTT STREET, OTTAWA  
TOPOGRAPHIC SURVEY OF  
PART OF LOTS 3 & 4  
(NORTH OF BULLMAN STREET)  
AND  
PART OF LOTS 3 & 4  
(SOUTH OF SCOTT STREET)  
REGISTERED PLAN 58  
AND  
PART OF LOTS 1290, 1292 & 1303  
REGISTERED PLAN 157  
CITY OF OTTAWA

SCALE 1 : 150  
0 1 2 5 10 15 metres

**FAIRHALL, MOFFATT & WOODLAND LIMITED**  
ONTARIO LAND SURVEYORS

- ELEVATION NOTES**
- ELEVATIONS SHOWN HEREON ARE REFERRED TO GEODETIC DATUM (CVG028).
  - ELEVATIONS FOR MANHOLE COVERS AND CATCH BASINS HAVE TO BE INDEPENDENTLY CONFIRMED BEFORE THEY CAN BE ACCEPTED FOR FINAL DESIGN OR CONSTRUCTION PURPOSES.
  - IT IS THE RESPONSIBILITY OF THE USER OF THIS INFORMATION TO VERIFY THAT THE JOB BENCHMARKS HAVE NOT BEEN ALTERED OR DISTURBED AND THAT THEIR RELATIVE ELEVATION AND DESCRIPTION AGREE WITH THE INFORMATION SHOWN ON THIS DRAWING.

- UTILITY NOTES**
- THIS DRAWING CANNOT BE ACCEPTED AS ACKNOWLEDGING ALL UNDERGROUND UTILITIES AND IT WILL BE THE RESPONSIBILITY OF THE USER TO CONTACT THE RESPECTIVE UTILITY AUTHORITIES FOR CONFIRMATION OR LOCATION.
  - UNDERGROUND UTILITIES, AS REPORTED ON THIS DRAWING, ARE BASED ON AN ACTUAL "FIELD LOCATE" BY THE RESPECTIVE UTILITY AGENCIES OR HAVE BEEN COMPILED FROM DATA OBTAINED FROM THE FOLLOWING SOURCE:  
a) CITY OF OTTAWA PUBLIC UTILITIES REGISTRY
  - BEFORE ANY WORK INVOLVING PROBING, EXCAVATING, ETC., A FIELD LOCATION OF UNDERGROUND PLANT BY THE PERTINENT UTILITY AUTHORITY IS MANDATORY.

- NOTES**
- BEARINGS ARE GRID AND ARE DERIVED FROM THE SOUTHERLY LIMIT OF SCOTT STREET AS SHOWN ON PLAN 4R-20340, HAVING A BEARING OF N 82°27'00" E AND ARE REFERRED TO THE CENTRAL MERIDIAN 78°30' W LONGITUDE, MTM ZONE 9 (NAD83 ORIGINAL).
  - SURVEY PERFORMED UNDER WINTER CONDITIONS AND MAY NOT REFLECT ALL FEATURES ON SITE.
  - REVISION: JANUARY 16, 2020. ADDED BUILDING DIMENSIONS AND TIES TO PROPERTY LINES.

**LEGEND**

- - SURVEY MONUMENT FOUND
- SIB - STANDARD IRON BAR
- CP - CONCRETE PIN
- RB - ROCK BAR
- (P) - PLAN 4R-6192
- (S) - SET
- (M) - MEASURED
- (857) - FAIRHALL, MOFFATT & WOODLAND LIMITED, O.L.S.
- PIN - PROPERTY IDENTIFIER NUMBER
- (T) - TOP OF WALL
- - CURB
- CB - CATCHBASIN
- MV - WATER VALVE
- LS - LAMP STANDARD
- UP - UTILITY POLE
- FH - FIRE HYDRANT
- MH - MANHOLE
- ▲ - SIGN
- BL - BOLLARDS
- DT - DECIDUOUS TREE
- S - SANITARY SEWER
- ST - STORM SEWER
- W - WATERMAIN
- G - GAS LINE
- UH - HYDRO
- - OVERHEAD UTILITY WIRES
- C - COMBINED SEWER
- SL - STREET LIGHTING

**SURVEYOR'S CERTIFICATE**

I CERTIFY THAT:

- THIS SURVEY AND PLAN ARE CORRECT AND IN ACCORDANCE WITH THE SURVEYS ACT, THE SURVEYORS ACT, THE LAND TIES ACT AND THE REGULATIONS MADE UNDER THEM.
- THE SURVEY WAS COMPLETED ON JANUARY 09, 2020.

DATE: 2020/01/09  
JOHN H. GUTHRIE  
ONTOARIO LAND SURVEYOR

ASSOCIATION OF ONTARIO LAND SURVEYORS  
PLAN SUBMISSION FORM  
2115602

**Fairhall  
Moffatt  
&  
Woodland**  
L I M I T E D  
ONTOARIO LAND SURVEYORS  
Surveying and Land Information Services

JOB No. 238300  
E 364875, N 5029635  
REFERENCE No. 135-157  
5:\JOBS\238300\DWG 14.01.2020  
TP\_2383.dwg (8)

© COPYRIGHT 2020. REPRODUCTION, ALTERATION OR DISTRIBUTION OF THIS PLAN WITHOUT THE WRITTEN CONSENT OF FAIRHALL, MOFFATT & WOODLAND LIMITED IS PROHIBITED.

HINTON AVENUE NORTH  
(Formerly HINTON AVENUE (Per Registered Plan N° 157))