

LEGEND

F.F. = 80.50	PROPERTY LINE
(M)	FINISHED FLOOR ELEVATION
(M)	DEPRESSED CURB
(M)	WATER METER (SEE MECH. DRAWG. FOR EXACT LOCATION)
(M)	REMOTE WATER METER (SEE MECH. DRAWG. FOR EXACT LOCATION)
(M)	SIAMENSE CONNECTIONS (SEE MECH. DRAWG. FOR EXACT LOCATION)
(M)	GAS SERVICE
(M)	RETAINING WALL CW TOP OF WALL AND GRASS GRADE
(M)	VALVE AND VALVE BOX
(M)	VALVE AND VALVE CHAMBER
(M)	WATER SERVICE
(M)	SANITARY SEWER SERVICE
(M)	STORM SEWER SERVICE
(M)	EXISTING CURB
(M)	EXISTING CATCHBASIN
(M)	EXISTING WATER VALVE
(M)	EXISTING LAMP STANDARD
(M)	EXISTING UTILITY POLE
(M)	EXISTING FIRE HYDRANT
(M)	EXISTING MANHOLE
(M)	EXISTING SIGN
(M)	EXISTING BOLLARDS
(M)	EXISTING DECIDUOUS TREE
(M)	EXISTING SANITARY SEWER
(M)	EXISTING STORM SEWER
(M)	EXISTING WATERMAIN
(M)	EXISTING GAS LINE
(M)	EXISTING HYDRO EXISTING
(M)	EXISTING OVERHEAD UTILITY WIRES
(M)	EXISTING COMBINED SEWER
(M)	EXISTING STREET LIGHTING

WATERMAIN SCHEDULE

Station	Description	Finished Grade	Top of Watermain	As Built Watermain
A 0+100.00	200x150 REDUCER	61.83	59.050	
0+103.59	22.5 BEND	61.51	59.108	
0+107.15	22.5 BEND	61.56	59.164	
0+110.00		61.58	59.179	
0+120.00		61.64	59.235	
0+130.00		61.69	59.291	
0+140.00		61.75	59.346	
0+150.00		61.80	59.402	
0+159.06		61.85	59.452	
0+170.00		61.91	59.507	
0+180.00		61.96	59.557	
0+186.46	22.5 BEND	61.99	59.560	
0+190.00		61.95	59.552	
0+191.05	22.5 BEND	61.94	59.540	
0+195.48	TEE	61.96	59.564	
B 0+196.48	V&B	62.10	59.570	
0+197.48	TEE	62.10	59.575	
0+200.00		62.05	59.573	
0+202.48		61.97	59.570	
0+204.49		61.97	59.568	
0+210.00		61.96	59.562	
0+220.00		61.95	59.551	
C 0+227.07		61.94	59.544	

CROSSING SCHEDULE

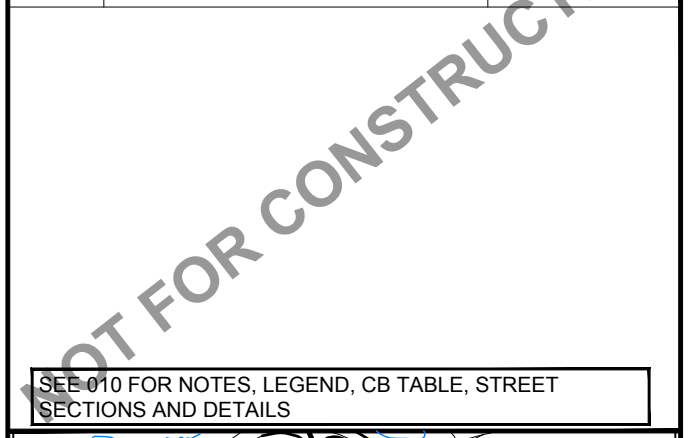
(M)	200mmØ SAN 0.500m CLEARANCE OVER 150mmØ WTR
(M)	150mmØ WTR 0.877m CLEARANCE OVER 250mmØ STM
(M)	150mmØ WTR 0.337m CLEARANCE OVER 375mmØ STM

CLIENT
Reid's Heritage Properties
 1515 Gordon Street, Suite 203, Guelph, ON, N1L 1C9

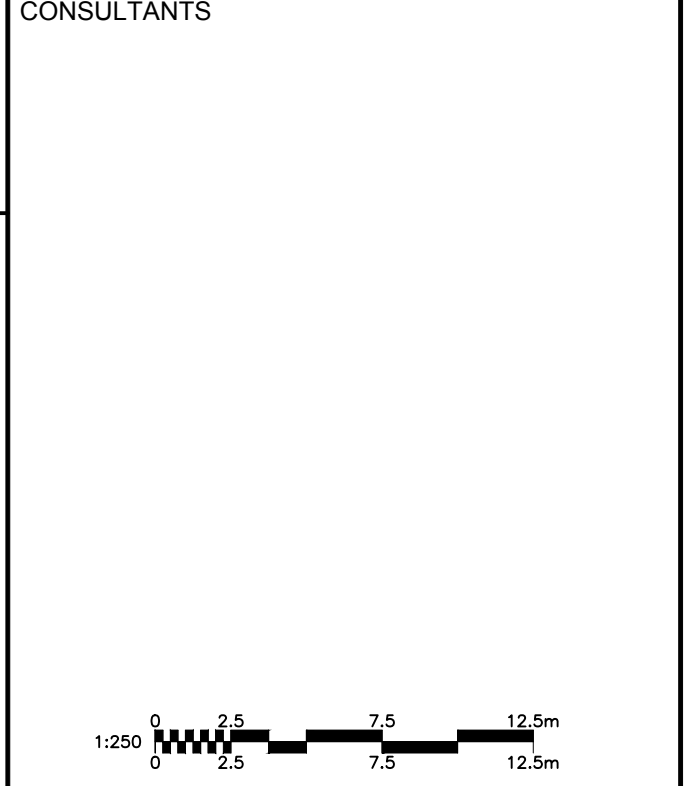
COPYRIGHT
 This drawing has been prepared solely for the intended use. Any reproduction or distribution for any purpose other than authorized by IBI Group is forbidden. IBI Group shall have precedence over scaled dimensions. Contractors shall verify and be responsible for all dimensions and conditions on the job, and IBI Group shall be relieved of any liability from the operation and conditions shown on the drawing. Shop drawings shall be submitted to IBI Group for general conformance before proceeding with fabrication.

IBI Group Professional Services (Canada) Inc.
 is a member of the IBI Group of companies.

ISSUES	No.	DESCRIPTION	DATE
	1	ISSUED FOR SPA	2021-11-24
	2	REVISED PER CITY COMMENTS	2022-07-28
	2	REVISED PER NEW SITE PLAN	2022-08-05



CONSULTANTS



SEAL

LICENCED PROFESSIONAL ENGINEER
 J.D. K. YAMNOPOULOS
 2022/08/05
 PROVINCE OF ONTARIO

LICENCED PROFESSIONAL ENGINEER
 S. E. LABADIE
 100214983
 2022/08/05
 PROVINCE OF ONTARIO

IBI GROUP
 Suite 400 - 333 Preston Street
 Ottawa, ON K1S 5N4 Canada
 Tel: 613 225 1311 / 613 241 3300 Fax: 613 225 9868
 ibigroup.com

PROJECT
EVOKE
 1546 Scott Street, Ottawa

PROJECT NO:
132902

DRAWN BY:
D.D.

PROJECT MGR:
D.G.Y.

CHECKED BY:
J.B.

APPROVED BY:
J.B.

SHEET TITLE
GENERAL PLAN OF SERVICES

SHEET NUMBER
C-001

ISSUE
2

- NOTES:**
- ALL WORKS TO BE COMPLETED AS PER CURRENT CITY OF OTTAWA STANDARDS AND ONTARIO PROVINCIAL STANDARDS AND SPECIFICATIONS.
 - SEWER LATERALS TO BE PVC DR 35.
 - WATER MAIN AND SERVICES TO BE PVC DR 18 CL 150. MINIMUM COVER OF 2.4m FOR WATER SERVICE IS REQUIRED. USE THERMAL INSULATION AS PER CITY STANDARDS WHEN COVER IS LESS THAN 2.4m. WATER MAIN AND SERVICES TO HAVE RESTRAINTS AND THRUST BLOCKS AS PER CITY STD W23, W25.5 AND W25.6. NEW WATER MAIN TO HAVE TRACING WIRE PER STD W36.
 - ALL SERVICE LATERAL AND SURFACE RESTORATION WORK IN ACCORDANCE WITH CURRENT CITY OF OTTAWA STANDARDS AND SPECIFICATIONS.
 - FULL PORT BACKWATER VALVE IS REQUIRED ON BOTH THE SANITARY AND STORM SERVICE CONNECTIONS.
 - WATER SERVICE CHLORINATION AND TESTING TO BE COMPLETED BY CITY FORCES.
 - BUILDING INFORMATION TAKEN FROM TREGEBOW COGAN ARCHITECTS DRAWINGS.
 - AN EROSION AND SEDIMENTATION CONTROL PLAN WILL BE IMPLEMENTED ON THIS SITE. AS A MINIMUM THAT PLAN WILL INCLUDE A LIGHT DUTY SILT FENCE BARRIER TO CPSD STANDARD 219.110 SURROUNDING THE SITE WHERE PRACTICAL AND SILT SACKS FITTED UNDER EXISTING STREET CATCH BASINS.
 - ALL SHOWN UTILITIES ARE APPROXIMATE AND ARE TO BE FIELD VERIFIED BY CONTRACTOR. ANY DISCREPANCIES ARE TO BE REPORTED TO IBI GROUP PRIOR TO CONTRACTOR MOBILIZING TO SITE.
 - CONTRACTOR RESPONSIBLE TO SUPPORT EXISTING UTILITIES THAT MAY BE AFFECTED DURING CONSTRUCTION.
 - EXISTING CURBS AND SIDEWALKS ARE TO BE REMOVED AND REPLACED AS NOTED ON THE DRAWINGS.
 - THE CONTRACTOR SHALL IMPLEMENT BEST MANAGEMENT PRACTICES, TO PROVIDE FOR PROTECTION OF THE AREA DRAINAGE SYSTEM AND THE RECEIVING WATER COURSE. DURING CONSTRUCTION ACTIVITIES THIS INCLUDES LIMITING THE AMOUNT OF EXPOSED SOIL, USING FILTER CLOTH UNDER THE GRATES OF CATCHBASINS AND MANHOLES AND INSTALLING SILT FENCES AND EFFECTIVE SEDIMENT TRAPS. THE CONTRACTOR ACKNOWLEDGES THAT FAILURE TO IMPLEMENT APPROPRIATE EROSION AND SEDIMENT CONTROL MEASURES MAY BE SUBJECT TO PENALTIES IMPOSED BY ANY APPLICABLE REGULATORY AGENCIES.
 - FOR GEOTECHNICAL INFORMATION SEE REPORT 47-CEI-R1BY YURI MENDEZ ENGINEERING.
 - CLAY SEAL TO BE INSTALLED IN SERVICE TRENCHES BETWEEN CONNECTION POINT AND CAP.

HOLLAND Avenue

BULLMAN St.

HAMILTON Ave. N

SERVICING