

EXISTING SCHOOL

YELLOWCRESS WAY

EXISTING RESIDENTIAL

# MATTAMY HOMES DECOEUR DRIVE 2370 TENTH LINE ROAD

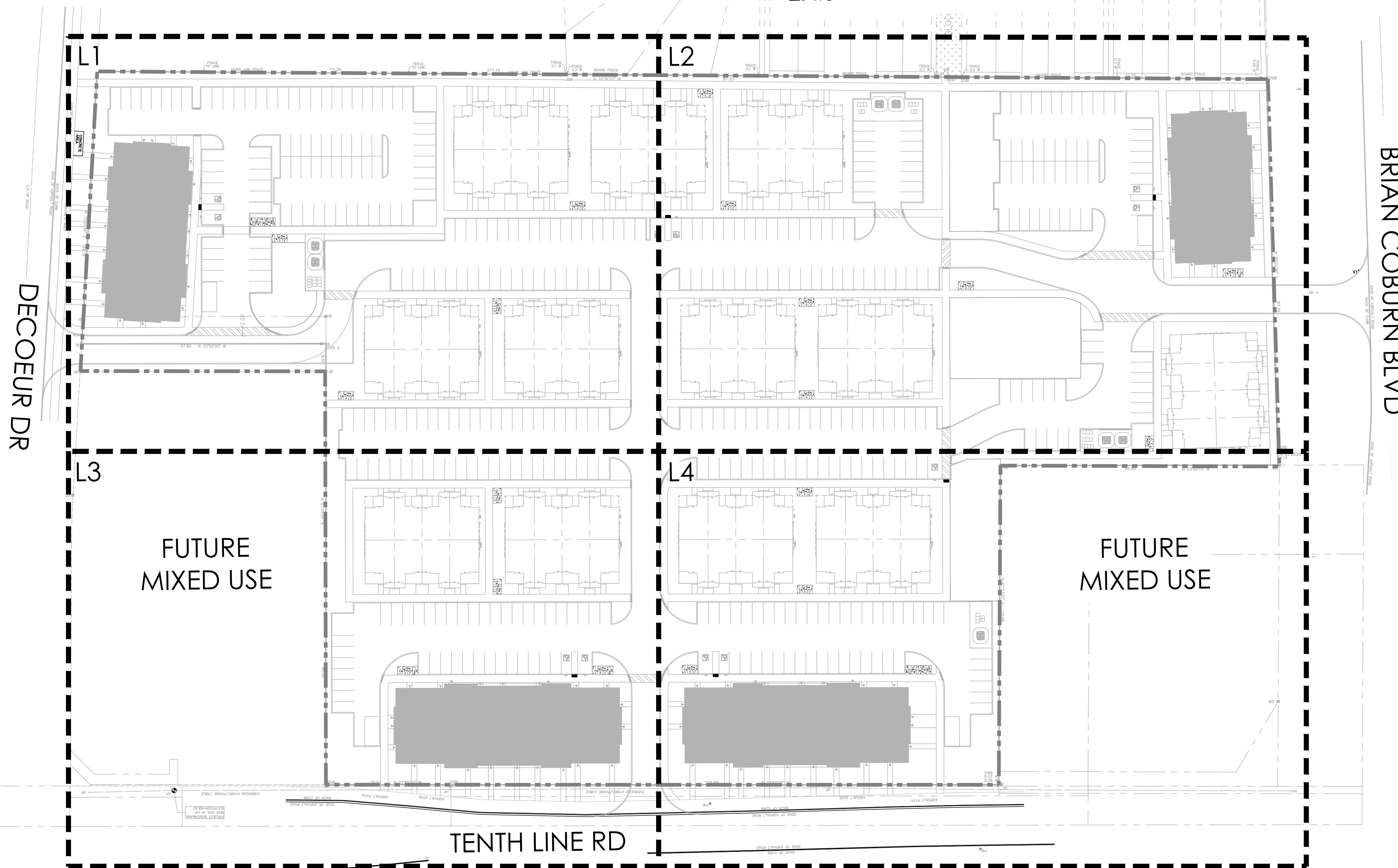


## LIST OF DRAWINGS:

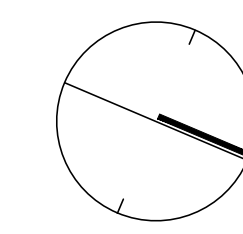
- L1 - LANDSCAPE PLAN
- L2 - LANDSCAPE PLAN
- L3 - LANDSCAPE PLAN
- L4 - LANDSCAPE PLAN
- D1 - DETAILS
- D2 - DETAILS

### TREE PLANTING IN MARINE CLAY SOILS

1. THIS LANDSCAPE PLAN CONFORMS WITH THE TREE-TO-FOUNDATION SETBACK, SOIL VOLUME, AND SURFACE-GRADING REQUIREMENTS OUTLINED IN THE CITY OF OTTAWA'S GUIDELINES FOR TREE PLANTING IN SENSITIVE MARINE CLAY SOILS (2017), BASED ON THE FINDINGS OUTLINED IN THE PROJECT GEOTECHNICAL REPORT.
2. ADDITIONAL REQUIREMENTS OUTLINED IN THE CITY OF OTTAWA'S GUIDELINES FOR TREE PLANTING IN SENSITIVE MARINE CLAY SOILS (2017), INCLUDING USF DEPTH, FOUNDATION WALL REINFORCEMENT, AND SUBDIVISION GRADING, SHOULD BE CONFIRMED BY THE PROJECT ENGINEER(S).
3. THE CONTRACTOR SHOULD REPORT ANY DISCREPANCIES TO THE CONTRACT ADMINISTRATOR BEFORE PLANTING TREES.
4. CITY OF OTTAWA: GUIDELINES FOR TREE PLANTING IN SENSITIVE MARINE CLAY SOILS (2017). THE FOLLOWING GUIDELINES ARE PRIMARILY FOCUSED ON SMALL AND MEDIUM SIZE STREET TREES. HOWEVER, LARGE TREES (MATURE HEIGHT OVER 14M) CAN STILL BE PLANTED IN AREAS OF SMC SOILS PROVIDED A TREE TO FOUNDATION SETBACK EQUAL TO THE FULL MATURE HEIGHT OF THE TREE CAN BE PROVIDED (E.G. IN A PARK OR OTHER GREEN SPACE). FOR STREET TREES IN THE ROAD RIGHT-OF-WAY WHERE SMC SOILS HAVE BEEN IDENTIFIED, THE TREE TO FOUNDATION SETBACKS MAY BE REDUCED TO 4.5M FOR SMALL (MATURE TREE HEIGHT UP TO 7.5M) AND MEDIUM SIZE TREES (MATURE TREE HEIGHT 7.5M-14M) PROVIDED ALL OF THE FOLLOWING SIX CONDITIONS ARE MET:
  1. THE MODIFIED PLASTICITY INDEX OF THE SOIL BETWEEN THE UNDERSIDE OF FOOTING (USF) AND A DEPTH OF 3.5M GENERALLY DOES NOT EXCEED 40%. THIS CORRESPONDS TO SOILS WITH LOW/MEDIUM POTENTIAL FOR SOIL VOLUME CHANGE. CLAY SOILS THAT EXCEED THE 40% PLASTICITY INDEX ARE CONSIDERED TO HAVE HIGH POTENTIAL FOR SOIL VOLUME CHANGE. FOR THESE WORST-CASE SOILS, THE SETBACKS AND TREE PLANTING RESTRICTIONS REMAIN UNCHANGED FROM THE 2005 CLAY SOILS POLICY (TREE SETBACK MUST EQUAL THE MATURE HEIGHT OF THE TREE - I.E. 7.5M SETBACK FOR SMALL TREES).
  2. THE USF IS 2.1M OR GREATER BELOW THE LOWEST FINISHED GRADE. NOTE: THIS FOOTING LEVEL MUST BE SATISFIED FOR FOOTINGS WITHIN 10M OF THE TREE, AS MEASURED FROM THE CENTRE OF THE TREE TRUNK, AND VERIFIED BY MEANS OF THE GRADING PLAN AS INDICATED IN THE PROCEDURAL CHANGES BELOW.
  3. A SMALL SIZE TREE MUST BE PROVIDED WITH A MINIMUM OF 25M<sup>3</sup> OF AVAILABLE SOIL VOLUME, AS DETERMINED BY A LANDSCAPE ARCHITECT. A MEDIUM SIZE TREE MUST BE PROVIDED WITH A MINIMUM OF 30M<sup>3</sup> OF AVAILABLE SOIL VOLUME, AS DETERMINED BY A LANDSCAPE ARCHITECT. THE DEVELOPER WILL ENSURE THE SOIL IS GENERALLY UNCOMPACTED WHEN BACKFILLING IN STREET TREE PLANTING LOCATIONS. NOTE: THE SOIL VOLUME CALCULATION MUST BE BASED ON A DEPTH OF 1.5M BELOW FINISHED GRADE (E.G. 5M LENGTH X 4M WIDTH AT SURFACE X 1.5M DEPTH = 30M<sup>3</sup>). IT MAY INCLUDE LANDS IN THE RIGHT-OF-WAY AND ON PRIVATE PROPERTY, BUT MUST SUBTRACT THE VOLUME OF SHALLOW UTILITY TRENCHES (I.E. VOLUME OF SHALLOW UTILITY TRENCHES CANNOT COUNT TOWARDS MINIMUM SOIL VOLUME).
4. THE TREE SPECIES MUST BE SMALL TO MEDIUM SIZE, AS CONFIRMED BY A LANDSCAPE ARCHITECT IN THE LANDSCAPE PLAN.
5. THE FOUNDATION WALLS ARE TO BE REINFORCED AT LEAST NOMINALLY (MINIMUM OF TWO UPPER AND TWO LOWER 15M BARS IN THE FOUNDATION WALL) TO PROVIDE DUCTILITY AS DESCRIBED IN THE GEOTECHNICAL REPORT.
6. GRADING SURROUNDING THE TREE MUST PROMOTE DRAINING TO THE TREE ROOT ZONE (IN SUCH A MANNER AS NOT TO BE DETRIMENTAL TO THE TREE), AS NOTED ON THE SUBDIVISION GRADING PLAN.



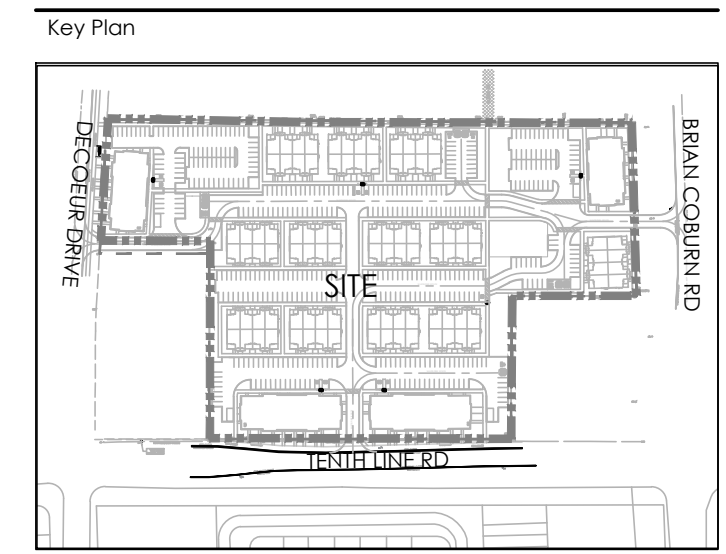
EXISTING RESIDENTIAL



KEYMAP  
NTS



Contractor shall check all dimensions on the work and report any discrepancy to the Landscape Architect before proceeding. All drawings and specifications are the property of the Landscape Architect and must be returned at the completion of the work. This drawing is not to be used for construction until signed by the Landscape Architect.



**LEGEND**

**FENCING**

- 2.0m WASTE ENCLOSURE FENCE WITH PEDESTRIAN ACCESS GATE

**PLANTING**

- LARGE DECIDUOUS TREE
- MEDIUM DECIDUOUS TREE
- TREEFORM SHRUBS
- CONIFEROUS TREE
- COLUMNAR TREE
- DECIDUOUS SHRUB
- CONIFEROUS SHRUB
- GRASSES/PERENNIALS
- SOD

**SURFACING**

- UNIT PAVING WALKWAYS
- UNIT PAVING ENTRANCES
- RIVERSTONE PAVING
- CONCRETE PAVING
- HEAVY DUTY CONCRETE PAVING
- STONEDUST PAVING

**UTILITIES**

- PROPOSED HYDRO TRANSFORMER
- PROPOSED CABLE PEDESTAL
- PROPOSED BELL PEDESTAL
- CURB STOP
- PROPOSED BELL CABINET
- PROPOSED STREET LIGHT
- FIRE HYDRANT
- EXISTING HYDRO POLE

**PLANTING KEY**

- XX-00 TREE SPECIES QUANTITY
- XX-00 SHRUB SPECIES QUANTITY

**DETAIL KEY**

- 1-01 DETAIL NO. SHEET NO.

No.	Description	Date
2	Re-issued for First Submission	Dec.21/21
1	Issued for First Submission	Dec.10/21

Revision

**NAK** design strategies

1285 WELLINGTON STREET, OTTAWA, ON K1Y 3A8 CANADA  
T 613.237.2345 F 613.237.4423 NAKDESIGNSTRATEGIES.COM

Project

MATTAMY HOMES  
DECOEUR DRIVE  
2370 TENTH LINE ROAD

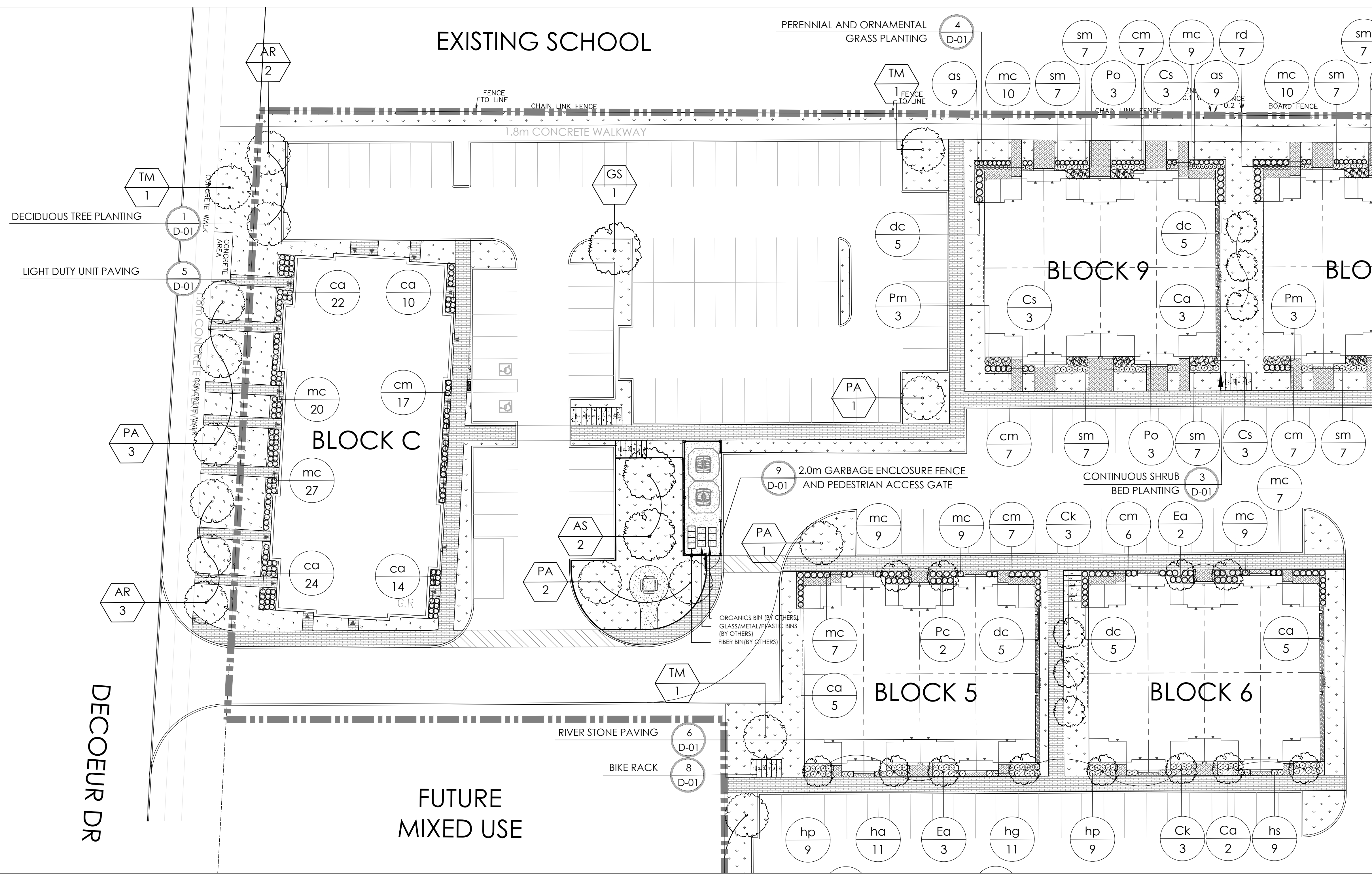
Title

LANDSCAPE PLAN

Date DEC 2021 Sheet  
Scale 1:250  
Drawn J.C. SH  
Checked J.C. SH  
Job No. 21-165

L1

# EXISTING SCHOOL



- GENERAL NOTES:**
- ACER RUBRUM AND QUERCUS RUBRA TO BE SPRUNG DUG SPECIMENS AND PLANTED IN THE SPRING ONLY.
  - THE LOCATION OF THE TREES SHOWN ON THIS PLAN IS APPROXIMATE AND SHALL NOT BE SCALED FROM THIS DRAWING. THIS PLAN MUST BE READ IN CONJUNCTION WITH THE APPROVED CUP AND CITY CROSS SECTIONS.
  - CONTRACTOR SHALL ENSURE THAT ALL UTILITY LOCATIONS ARE OBTAINED PRIOR TO ANY EXCAVATION FOR LANDSCAPING.
  - LOCATION OF ALL PLANT MATERIALS TO BE STAKED BY THE CONTRACTOR AND VERIFIED IN THE FIELD BY LANDSCAPE ARCHITECT & CITY OF OTTAWA PRIOR TO THE EXCAVATION OF PITS.
  - ALL PLANT MATERIAL SHALL BE NURSERY GROWN STOCK UNLESS OTHERWISE NOTED.
  - TREES TO HAVE A MINIMUM 1800 CLEAR STEM ABOVE GRADE.
  - PLACE SOD ON A MINIMUM 150mm TOPSOIL.
  - CONTRACTOR TO MAKE GOOD ALL EXISTING AREAS DAMAGED BY HIS WORK TO THE SATISFACTION OF THE CITY OF OTTAWA.
  - THE CITY WILL BE NOTIFIED IF ANY TREES CANNOT BE LOCATED OR PLANTED DUE TO CONFLICTS WITH UTILITIES OR DRIVEWAYS. THE REQUIRED TREES NOT PLANTED ARE SUBJECT TO TREE BANKING. THE FINAL NUMBER OF TREES TO BE BANKED WILL BE PROVIDED TO THE CITY FOLLOWING ALL PLANTINGS.
  - ALL PLANT MATERIAL SHALL BE WARRANTED FOR TWO YEARS FROM THE DATE OF PERFORMANCE ACCEPTANCE AS DETERMINED BY THE CITY OF OTTAWA.
  - PERIODIC REVIEWS OF PLANTING SHALL BE CARRIED OUT BY THE LANDSCAPE ARCHITECT.
  - PLANTINGS TO BE STAKED FOR APPROVAL PRIOR TO CONSTRUCTION
  - CITY GRASS CUTTING RESPONSIBILITIES FOR SODDED AREAS SHALL BEGIN FOLLOWING PERFORMANCE ACCEPTANCE INSPECTION BY THE LANDSCAPE ARCHITECT AND THE CITY. ACCEPTANCE WILL BE PROVIDED ONLY IF:
    - SOD IS PROPERLY ESTABLISHED.
    - TURF IS FREE OF DEAD SPOTS AND WEEDS.
    - SODDED AREAS HAVE BEEN CUT WITHIN 24 HOURS PRIOR TO ACCEPTANCE INSPECTION.
    - MINIMUM OF 3 WEEKS HAVE ELAPSED FOLLOWING LAYING OF SOD.
    - A MINIMUM OF TWO CUTS HAVE TAKEN PLACE.
    - SODDED AREAS HAVE BEEN TOP-DRESSED, SEEDED AND AERATED

- PLANTING NOTES:**
- CONTRACTOR TO VERIFY LOCATION OF ALL SERVICES PRIOR TO ANY EXCAVATION.
  - LOCATIONS OF ALL PLANT MATERIALS TO BE STAKED BY THE CONTRACTOR AND VERIFIED IN THE FIELD BY LANDSCAPE ARCHITECT PRIOR TO THE EXCAVATION OF PITS.
  - ALL PLANT MATERIAL SHALL BE NURSERY GROWN STOCK UNLESS OTHERWISE NOTED.
  - DECIDUOUS TREES TO HAVE A MINIMUM 1800 CLEAR STEM ABOVE GRADE.
  - ALL PLANT MATERIAL SHALL BE WARRANTED FOR TWO YEARS FROM THE DATE OF PERFORMANCE ACCEPTANCE AS DETERMINED BY THE LANDSCAPE ARCHITECT.
  - ALL STEEL TIE BARS TO BE REMOVED AT THE ONE YEAR INTERIM INSPECTION UNLESS OTHERWISE DIRECTED BY THE LANDSCAPE ARCHITECT.
  - CONTRACTOR TO MAKE GOOD ALL EXISTING AREAS DAMAGED BY HIS WORK TO THE SATISFACTION OF THE LANDSCAPE ARCHITECT.
  - PERIODIC REVIEWS OF PLANTING SHALL BE CARRIED OUT BY THE LANDSCAPE ARCHITECT.
  - ANY PROPOSED SUBSTITUTIONS OF PLANT SPECIES SHALL BE MADE WITH PLANTS OF EQUIVALENT OVERALL FORM, HEIGHT, BRANCHING HABIT, FLOWER, LEAF, COLOR, FRUIT AND CULTURE AND ONLY AFTER APPROVAL OF THE LANDSCAPE ARCHITECT.
- SHRUB NOTES:**
- PLACE THE SHRUB AS UPRIGHT AS POSSIBLE, INCLUDING ON SLOPES.
  - PLANT SHRUBS AT THE PROPER DEPTH AS INDICATED ON THE DRAWINGS.
  - PACK THE SOIL WELL AROUND THE PLANT BASE TO REMOVE AIR POCKETS, BUT DO NOT COMPACT SOIL. PRESS SOIL GENTLY BUT FIRMLY TO PREVENT SHOCKING THE ROOTS.
  - PLACE SPECIES ACCORDING TO THE QUANTITIES AND SPACING AS INDICATED ON THE DRAWINGS.
  - PLANT SHRUBS AT THE PROPER DEPTH THE ROOT COLLARS SHOULD BE AT GROUND LEVEL.
  - MULCH THE SOIL SURFACE AS INDICATED ON DRAWINGS.
  - WATER PLANTS THOROUGHLY FOLLOWING PLANTING.
  - REFER TO SPECIFICATIONS FOR MAINTENANCE REQUIREMENTS.

**PLANT LIST**

KEY	QTY.	BOTANICAL NAME	COMMON NAME	CAL/HT.	ROOT
<b>LARGE DECIDUOUS TREES (15-30m)</b>					
AR	17	ACER X FRESAMANI 'ARMSTRONG'	RED MAPLE	60	B&B
AC	18	ACER RUBRUM	HONEYLOCUST	60	B&B
GS	6	GLEDITSIA TRIACANTHOS VAR. INERMIS	RED OAK	60	B&B
QR	3/27	QUERCUS RUBRA		60	B&B
<b>MEDIUM DECIDUOUS TREES (7.5m-14m)</b>					
AR	17	ACER X FRESAMANI 'ARMSTRONG'	ARMSTRONG MAPLE	60	B&B
PA	19	PYRUS CALLERYANA 'CAPITAL'	CAPITAL PEAR	60	B&B
QF	22	QUERCUS ROBUR 'FASTIGIATA'	PYRAMIDAL ENGLISH OAK	60	B&B
SH	15	SORBUS X HYBRIDA	MOUNTAIN-ASH	60	B&B
TM	17	TILIA MONSIEURICA	MONGOLIAN LINDEN	60	B&B
90					
<b>TREEFORM SHRUBS</b>					
Ca	21	CORNUS ALTERNIFOLIA	PAGODA DOGWOOD	40	B&B
Cx	22	CORNUS KOUSA 'SATOMI'	SATOMI FLOWERING DOGWOOD	175cm	TREEFORM
Ec	10	EUCONYMIUS ALATUS 'COMPACTUS'	DWARF BURNING BUSH	150cm	TREEFORM
Pc	12	PRUNUS X CISTENA	PURPLE-LEAF SAND CHERRY	175cm	TREEFORM
65					
<b>CONIFEROUS TREES</b>					
PP	6	PICEA PUNGENS 'AVATAR'	AVATAR BLUE SPRUCE	500cm	B&B
PS	3	PINUS STROBUS	WHITE PINE	500cm	B&B
9					
<b>DECIDUOUS SHRUBS</b>					
Cs	35	CORNUS SERICEA 'FARROW'	ARCTIC FIRE DOGWOOD	175cm	3 GAL
Ef	3	EUCONYMIUS ALATUS 'FIREBALL'	FIREBALL BURNING BUSH	175cm	3 GAL
Po	24	PHYSCARPUS OPUFOLIOLUS 'DIABOLO'	DIABOLO NINEBARK	175cm	3 GAL
Pv	3	PHILADELPHUS X VIRGINALIS	MOCK ORANGE	175cm	3 GAL
65					
<b>CONIFEROUS SHRUBS</b>					
Pm	12	PINUS MUGO VAR. PUMILIO	DWARF MUGO VAR. PUMILIO	125cm	3 GAL

**GRASSES**

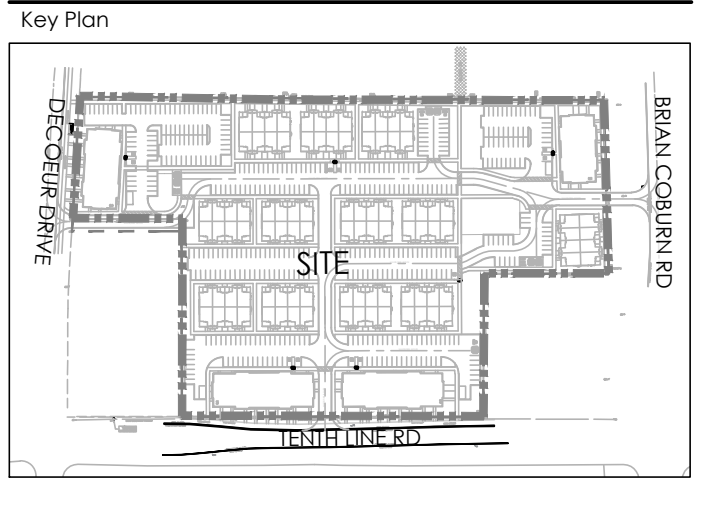
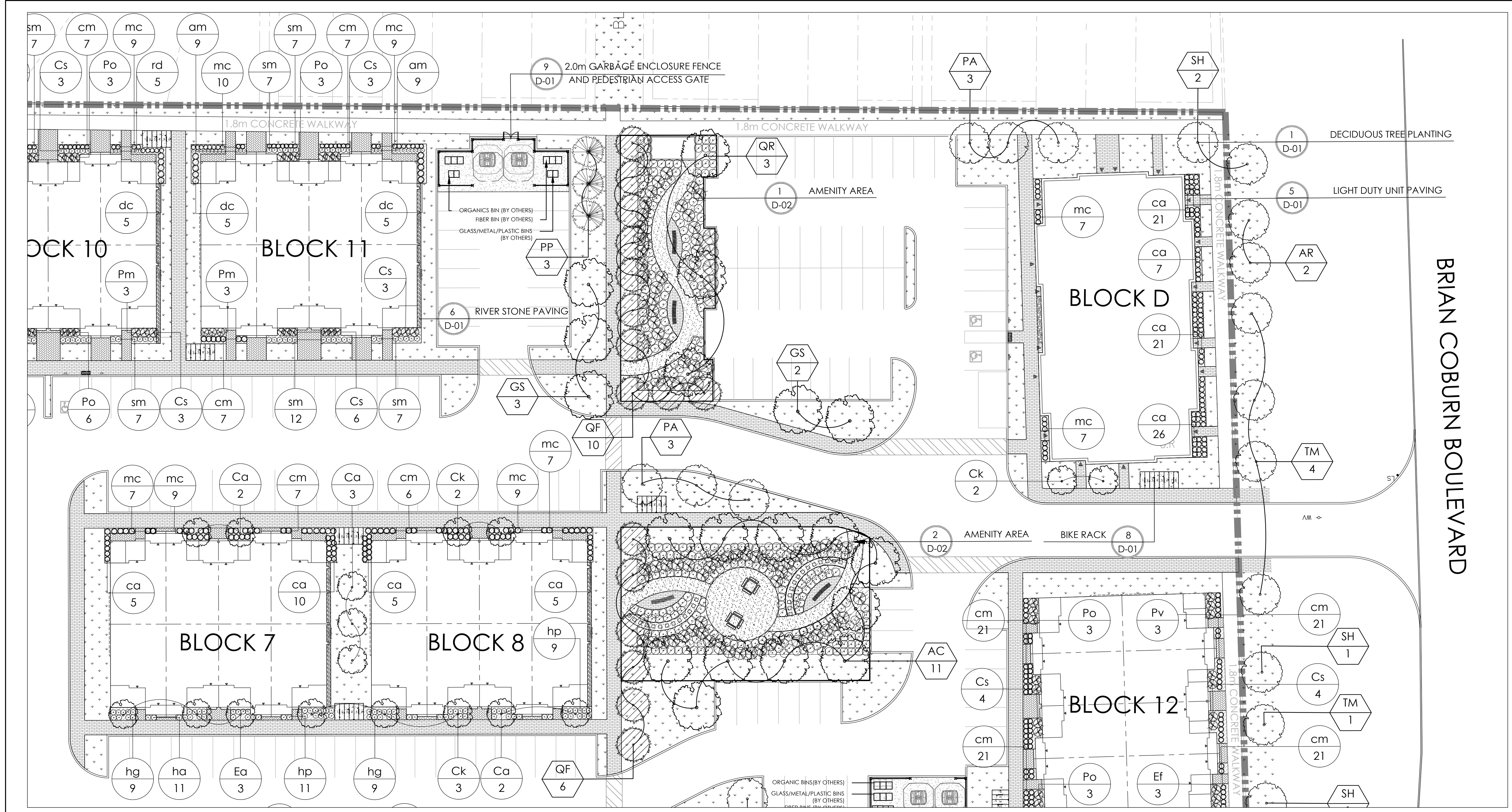
cm	382	CAREX MORROWII 'ICE DANCE'	ICE DANCE SEDGE	30cm	1 GAL
ca	57	CALAMAGROSTIS X ACUTIFLORA 'KARL FOERSTER'	KARL FOERSTER REED GRASS	150cm	1 GAL
dc	145	DESCHAMPSIA CESPITOSA	TUFTED HAIR GRASS	100cm	1 GAL
mc	191/775	MOLINA CAERULEA 'VARIEGATA'	VARIEGATED PURPLE MOOR GRASS	70cm	1 GAL

**PERENNIALS**

am	78	ALLIUM X MILLENIUM'	ORNAMENTAL ONION	50cm	1 GAL
as	34	ASTER NOVAE-ANGIAE 'PURPLE DOME'	NEW ENGLAND ASTER	50cm	1 GAL
rd	40	RUDBECKIA HIETA	BLACK-EYED SUSAN	60cm	1 GAL
ha	22	HOSTA 'AUGUST MOON'	AUGUST MOON HOSTA	45cm	1 GAL
hs	9	HOSTA 'SILVER BAY'	SILVER BAY HOSTA	40cm	1 GAL
hg	29	HOSTA 'GREAT ARRIVAL'	GREAT ARRIVAL	45cm	1 GAL
sm	271/483	SEDUM 'MAESTRO'	MAESTRO STONECROP	60cm	1 GAL



Contractor shall check all dimensions on the work and report any discrepancy to the Landscape Architect before proceeding. All drawings and specifications are the property of the Landscape Architect and must be returned at the completion of the work. This drawing is not to be used for construction until signed by the Landscape Architect.



**LEGEND**

PROPERTY LINE

**FENCING**

2.0m WASTE ENCLOSURE FENCE WITH PEDESTRIAN ACCESS GATE

**PLANTING**

- LARGE DECIDUOUS TREE
- MEDIUM DECIDUOUS TREE
- TREEFORM SHRUBS
- CONIFEROUS TREE
- COLUMNAR TREE
- DECIDUOUS SHRUB
- CONIFEROUS SHRUB
- GRASSES/PERENNIALS
- SOD

**SURFACING**

- UNIT PAVING WALKWAYS
- UNIT PAVING ENTRANCES
- RIVERSTONE PAVING
- CONCRETE PAVING
- HEAVY DUTY CONCRETE PAVING
- STONEDUST PAVING

**UTILITIES**

- PROPOSED HYDRO TRANSFORMER
- PROPOSED CABLE PEDESTAL
- PROPOSED BELL PEDESTAL
- CURB STOP
- PROPOSED BELL CABINET
- PROPOSED STREET LIGHT
- FIRE HYDRANT
- EXISTING HYDRO POLE

**PLANTING KEY**

- XX-00 TREE SPECIES QUANTITY
- XX-00 SHRUB SPECIES QUANTITY

**DETAIL KEY**

- 1-01 DETAIL NO. SHEET NO.

Revision

No.	Description	Date
2	Re-issued for First Submission	Dec.21/21
1	Issued for First Submission	Dec.10/21

**GENERAL NOTES:**

- ACER RUBRUM AND QUERCUS RUBRA TO BE SPRING-DUG SPECIMENS AND PLANTED IN THE SPRING ONLY.
- THE LOCATION OF THE TREES SHOWN ON THIS PLAN IS APPROXIMATE AND SHALL NOT BE SCALED FROM THIS DRAWING. THIS PLAN MUST BE READ IN CONJUNCTION WITH THE APPROVED CLIP AND CITY CROSS SECTIONS.
- CONTRACTOR SHALL ENSURE THAT ALL UTILITY LOCATIONS ARE OBTAINED PRIOR TO ANY EXCAVATION FOR LANDSCAPING.
- LOCATION OF ALL PLANT MATERIALS TO BE STAKED BY THE CONTRACTOR AND VERIFIED IN THE FIELD BY LANDSCAPE ARCHITECT & CITY OF OTTAWA PRIOR TO THE EXCAVATION OF PITS.
- ALL PLANT MATERIAL SHALL BE NURSERY GROWN STOCK UNLESS OTHERWISE NOTED.
- TREES TO HAVE A MINIMUM 1800 CLEAR STEM ABOVE GRADE.
- PLACE SOD ON A MINIMUM 150mm TOPSOIL.
- CONTRACTOR TO MAKE GOOD ALL EXISTING AREAS DAMAGED BY HIS WORK TO THE SATISFACTION OF THE CITY OF OTTAWA.
- THE CITY WILL BE NOTIFIED IF ANY TREES CANNOT BE LOCATED OR PLANTED DUE TO CONFLICTS WITH UTILITIES OR DRIVEWAYS. THE REQUIRED TREES NOT PLANTED ARE SUBJECT TO TREE BANKING. THE FINAL NUMBER OF TREES TO BE BANKED WILL BE PROVIDED TO THE CITY FOLLOWING ALL PLANTINGS.
- ALL PLANT MATERIAL SHALL BE WARRANTED FOR TWO YEARS FROM THE DATE OF PERFORMANCE ACCEPTANCE AS DETERMINED BY THE CITY OF OTTAWA.
- PERIODIC REVIEWS OF PLANTING SHALL BE CARRIED OUT BY THE LANDSCAPE ARCHITECT.
- PERIODIC REVIEWS OF PLANTING SHALL BE CARRIED OUT BY THE LANDSCAPE ARCHITECT.
- PLANTINGS TO BE STAKED FOR APPROVAL PRIOR TO CONSTRUCTION
- CITY GRASS CUTTING RESPONSIBILITIES FOR SODDED AREAS SHALL BEGIN FOLLOWING PERFORMANCE ACCEPTANCE INSPECTION BY THE LANDSCAPE ARCHITECT AND THE CITY. ACCEPTANCE WILL BE PROVIDED ONLY IF:
  - SOD IS PROPERLY ESTABLISHED.
  - TURF IS FREE OF DEAD SPOTS AND WEEDS.
  - SODDED AREAS HAVE BEEN CUT WITHIN 24 HOURS PRIOR TO ACCEPTANCE INSPECTION.
  - MINIMUM OF 3 WEEKS HAVE ELAPSED FOLLOWING LAYING OF SOD.
  - A MINIMUM OF TWO CUTS HAVE TAKEN PLACE.
  - SODDED AREAS HAVE BEEN TOP-DRESSED, SEEDED AND AERATED.

**PLANTING NOTES:**

- CONTRACTOR TO VERIFY LOCATION OF ALL SERVICES PRIOR TO ANY EXCAVATION.
- LOCATIONS OF ALL PLANT MATERIALS TO BE STAKED BY THE CONTRACTOR AND VERIFIED IN THE FIELD BY LANDSCAPE ARCHITECT PRIOR TO THE EXCAVATION OF PITS.
- ALL PLANT MATERIAL SHALL BE NURSERY GROWN STOCK UNLESS OTHERWISE NOTED.
- DECIDUOUS TREES TO HAVE A MINIMUM 1800 CLEAR STEM ABOVE GRADE.
- ALL PLANT MATERIAL SHALL BE WARRANTED FOR TWO YEARS FROM THE DATE OF PERFORMANCE ACCEPTANCE AS DETERMINED BY THE LANDSCAPE ARCHITECT.
- ALL STEEL T-BARS TO BE REMOVED AT THE ONE YEAR INTERIM INSPECTION UNLESS OTHERWISE DIRECTED BY THE LANDSCAPE ARCHITECT.
- CONTRACTOR TO MAKE GOOD ALL EXISTING AREAS DAMAGED BY HIS WORK TO THE SATISFACTION OF THE LANDSCAPE ARCHITECT.
- PERIODIC REVIEWS OF PLANTING SHALL BE CARRIED OUT BY THE LANDSCAPE ARCHITECT.
- ANY PROPOSED SUBSTITUTIONS OF PLANT SPECIES SHALL BE MADE WITH PLANTS OF EQUIVALENT OVERALL FORM, HEIGHT, BRANCHING HABIT, FLOWER, LEAF, COLOR, FRUIT AND CULTURE AND ONLY AFTER APPROVAL OF THE LANDSCAPE ARCHITECT.

**SHRUB NOTES:**

- PLACE THE SHRUB AS UPRIGHT AS POSSIBLE, INCLUDING ON SLOPES.
- PLANT SHRUBS AT THE PROPER DEPTH AS INDICATED ON THE DRAWINGS.
- PACK THE SOIL WELL AROUND THE PLANT BASE TO REMOVE AIR POCKETS. BUT DO NOT COMPACT SOIL. PRESS SOIL GENTLY BUT FIRMLY TO PREVENT SHOCKING THE ROOTS.
- PLACE SPECIES ACCORDING TO THE QUANTITIES AND SPACING AS INDICATED ON THE DRAWINGS.
- PLANT SHRUBS AT THE PROPER DEPTH THE ROOT COLLARS SHOULD BE AT GROUND LEVEL.
- MULCH THE SOIL SURFACE AS INDICATED ON DRAWINGS.
- WATER PLANTS THOROUGHLY FOLLOWING PLANTING.
- REFER TO SPECIFICATIONS FOR MAINTENANCE REQUIREMENTS.

**PLANT LIST**

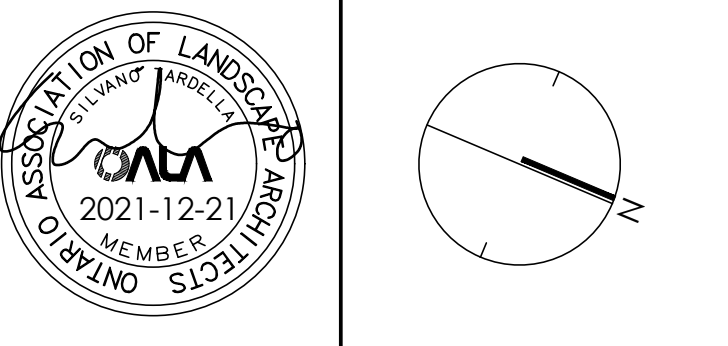
KEY	QTY	BOTANICAL NAME	COMMON NAME	CAL./HT.	ROOT
<b>LARGE DECIDUOUS TREES (1.5-30m)</b>					
AC	18	ACER RUBRUM	RED MAPLE	40	B&B
GS	6	QUERCUS RUBRA	HONEYLOCUST	60	B&B
QR	3	QUERCUS RUBRA	RED OAK	60	B&B
<b>MEDIUM DECIDUOUS TREES (7.5m-14m)</b>					
AR	17	ACER X FREEMANI 'ARMSTRONG'	ARMSTRONG MAPLE	60	B&B
PA	19	PIRUS CALLEPRYANA 'CAPITAL'	CAPITAL PEAR	40	B&B
QF	22	QUERCUS ROBUR 'FASTIGIATA'	PYRAMIDAL ENGLISH OAK	60	B&B
SH	15	SORBUS X HYBRIDA	MOUNTAIN-ASH	40	B&B
TM	17	TILIA MONGOLICA	MONGOLIAN LINDEN	60	B&B
<b>TREEFORM SHRUBS</b>					
Cc	21	CORNUS ALTERNIFOLIA	PAGODA DOGWOOD	40	B&B
Ck	22	CORNUS KOUSA 'SATOMI'	SATOMI FLOWERING DOGWOOD	175cm	TREEFORM
Ea	10	EUCONYMUS ALATUS 'COMPACTUS'	DWARF BURNING BUSH	150cm	TREEFORM
Pc	12	PRUNUS X CISTENA	PURPLE-LEAF SAND CHERRY	175cm	TREEFORM
<b>CONIFEROUS TREES</b>					
PP	6	PICEA PLUNGENS 'AVATAR'	AVATAR BLUE SPRUCE	500cm	B&B
PS	3	PINUS STROBUS	WHITE PINE	500cm	B&B
<b>DECIDUOUS SHRUBS</b>					
Cs	35	CORNUS SERICEA 'FARROW'	ARCTIC FIRE DOGWOOD	175cm	3 GAL.
Ef	3	EUCONYMUS ALATUS 'FIREBALL'	FIREBALL BURNING BUSH	175cm	3 GAL.
Po	24	PHYLLOSPERUM OPULIFOLIUS 'DIABOLO'	DIABOLO NINEBARK	175cm	3 GAL.
Pv	3	PHILADELPHUS X VIRGINALIS	MOCK ORANGE	175cm	3 GAL.
<b>CONIFEROUS SHRUBS</b>					
Pm	12	PINUS MUGO VAR. PUMILIO	DWARF MUGO VAR. PUMILIO	125cm	3 GAL.

**GRASSES**

cm	382	CAREX MORROWII 'ICE DANCE'	ICE DANCE SEDGE	30cm	1 GAL.
co	57	CALAMAGROSTIS X ACUTIFLORA 'KARL FOERSTER'	KARL FOERSTER REED GRASS	150cm	1 GAL.
dc	145	DESCHAMPIA CESPITOSA	TUFTED HAIR GRASS	100cm	1 GAL.
mc	191	MOLINIA CAERULEA 'VARIEGATA'	VARIEGATED PURPLE MOOR GRASS	70cm	1 GAL.
	775				

**PERENNIALS**

am	78	ALLIUM X 'MILLENIUM'	ORNAMENTAL ONION	50cm	1 GAL.
as	34	ASTER NOVAE-ANGLIAE 'PURPLE DOME'	NEW ENGLAND ASTER	50cm	1 GAL.
rd	40	RUBICECIA HIRTA	BLACK-EYED SUSAN	60cm	1 GAL.
ho	22	HOSTA 'AUGUST MOON'	AUGUST MOON HOSTA	45cm	1 GAL.
hs	9	HOSTA 'HOSTA SILVER BAY'	SILVER BAY HOSTA	40cm	1 GAL.
hg	29	HOSTA 'GREAT ARRIVAL'	GREAT ARRIVAL	65cm	1 GAL.
sm	271	SEDUM 'MAESTRO'	MAESTRO STONECROP	60cm	1 GAL.
	483				



**NAK** design strategies

1285 WELLINGTON STREET, OTTAWA, ON K1Y 3A8 CANADA  
T 613.237.2345 F 613.237.6423 NAKDESIGNSTRATEGIES.COM

MATTAMY HOMES  
DECOUPER DRIVE  
2370 TENTH LINE ROAD

Title: LANDSCAPE PLAN

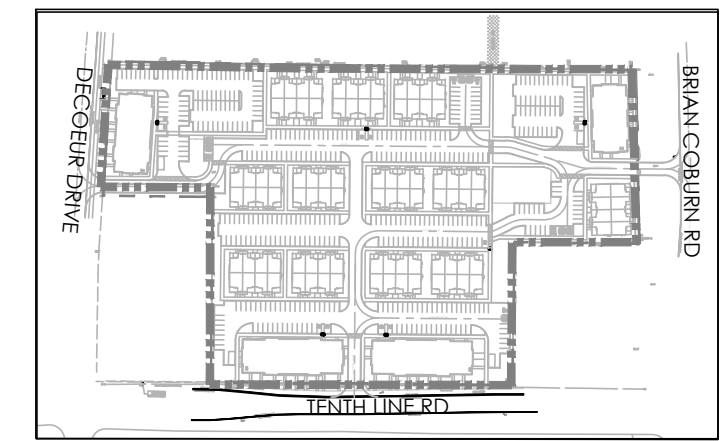
Date: DEC 2021  
Scale: 1:250  
Drawn: J.C. SH  
Checked: TM  
Job No.: 21-165

Sheet: L2



Contractor shall check all dimensions on the work and report any discrepancy to the Landscape Architect before proceeding. All drawings and specifications are the property of the Landscape Architect and must be returned at the completion of the work. This drawing is not to be used for construction until signed by the Landscape Architect.

Key Plan



**LEGEND**

PROPERTY LINE

**FENCING**

2.0m WASTE ENCLOSURE FENCE WITH PEDESTRIAN ACCESS GATE

**PLANTING**

- LARGE DECIDUOUS TREE
- MEDIUM DECIDUOUS TREE
- TREEFORM SHRUBS
- CONIFEROUS TREE
- COLUMNAR TREE
- DECIDUOUS SHRUB
- CONIFEROUS SHRUB
- GRASSES/PERENNIALS
- SOD

**SURFACING**

- UNIT PAVING WALKWAYS
- UNIT PAVING ENTRANCES
- RIVERSTONE PAVING
- CONCRETE PAVING
- HEAVY DUTY CONCRETE PAVING
- STONEDUST PAVING

**UTILITIES**

- PROPOSED HYDRO TRANSFORMER
- PROPOSED CABLE PEDESTAL
- PROPOSED BELL PEDESTAL
- CURB STOP
- PROPOSED BELL CABINET
- PROPOSED STREET LIGHT
- FIRE HYDRANT
- EXISTING HYDRO POLE

**PLANTING KEY**

- TREE SPECIES QUANTITY
- SHRUB SPECIES QUANTITY

**DETAIL KEY**

- DETAIL NO.
- SHEET NO.

2	Re-issued for First Submission	Dec.21/21
1	Issued for First Submission	Dec.10/21
No.	Description	Date

Revision

**NAK** design strategies

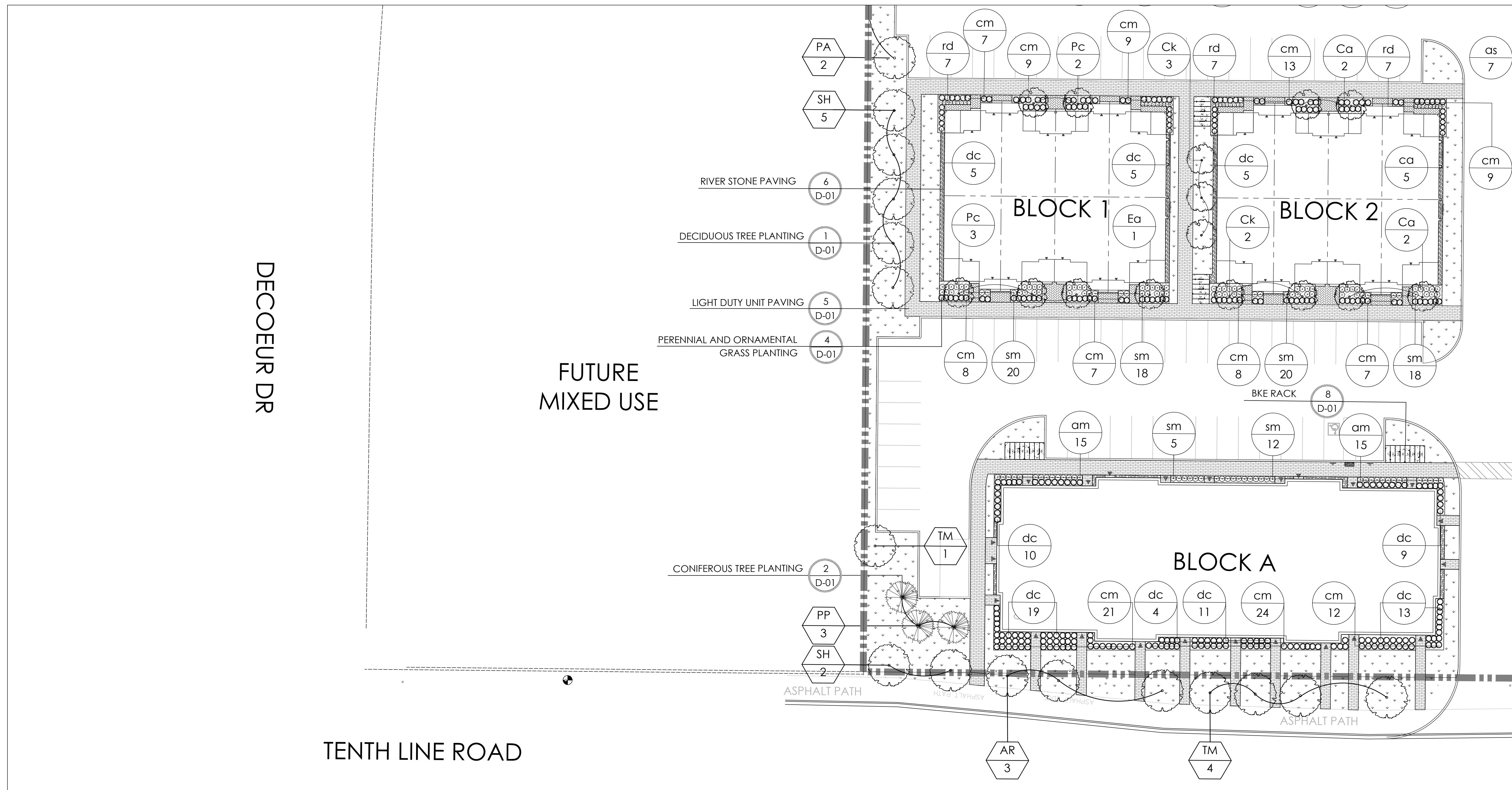
1285 WELLINGTON STREET, OTTAWA, ON K1T 3A8 CANADA  
 T 613.237.2345 F 613.237.6423 NAKDESIGNSTRATEGIES.COM

**MATTAMY HOMES**  
**DECOEUR DRIVE**  
 2370 TENTH LINE ROAD

Title: LANDSCAPE PLAN

Date: DEC 2021  
 Scale: 1:250  
 Drawn: J.C. SH  
 Checked: J.M.  
 Job No.: 21-165

Sheet: L3



- GENERAL NOTES:**
- ACER RUBRUM AND QUERCUS RUBRA TO BE SPRING DUG SPECIMENS AND PLANTED IN THE SPRING ONLY.
  - THE LOCATION OF THE TREES SHOWN ON THIS PLAN IS APPROXIMATE AND SHALL NOT BE SCALED FROM THIS DRAWING. THIS PLAN MUST BE READ IN CONJUNCTION WITH THE APPROVED CUP AND CITY CROSS SECTIONS.
  - CONTRACTOR SHALL ENSURE THAT ALL UTILITY LOCATIONS ARE OBTAINED PRIOR TO ANY EXCAVATION FOR LANDSCAPING.
  - LOCATION OF ALL PLANT MATERIALS TO BE STAKED BY THE CONTRACTOR AND VERIFIED IN THE FIELD BY LANDSCAPE ARCHITECT & CITY OF OTTAWA PRIOR TO THE EXCAVATION OF PITS.
  - ALL PLANT MATERIAL SHALL BE NURSERY GROWN STOCK UNLESS OTHERWISE NOTED.
  - TREES TO HAVE A MINIMUM 1800 CLEAR STEM ABOVE GRADE.
  - PLACE SOD ON A MINIMUM 150mm TOPSOIL.
  - CONTRACTOR TO MAKE GOOD ALL EXISTING AREAS DAMAGED BY HIS WORK TO THE SATISFACTION OF THE CITY OF OTTAWA.
  - THE CITY WILL BE NOTIFIED IF ANY TREES CANNOT BE LOCATED OR PLANTED DUE TO CONFLICTS WITH UTILITIES OR DRIVEWAYS. THE REQUIRED TREES NOT PLANTED ARE SUBJECT TO TREE BANKING. THE FINAL NUMBER OF TREES TO BE BANKED WILL BE PROVIDED TO THE CITY FOLLOWING ALL PLANTINGS.
  - ALL PLANT MATERIAL SHALL BE WARRANTED FOR TWO YEARS FROM THE DATE OF PERFORMANCE ACCEPTANCE AS DETERMINED BY THE CITY OF OTTAWA.
  - PERIODIC REVIEWS OF PLANTING SHALL BE CARRIED OUT BY THE LANDSCAPE ARCHITECT.
  - PLANTINGS TO BE STAKED FOR APPROVAL PRIOR TO CONSTRUCTION
  - CITY GRASS CUTTING RESPONSIBILITIES FOR SODDED AREAS SHALL BEGIN FOLLOWING PERFORMANCE ACCEPTANCE INSPECTION BY THE LANDSCAPE ARCHITECT AND THE CITY. ACCEPTANCE WILL BE PROVIDED ONLY IF:
    - SOD IS PROPERLY ESTABLISHED.
    - TURF IS FREE OF DEAD SPOTS AND WEEDS.
    - SODDED AREAS HAVE BEEN CUT WITHIN 24 HOURS PRIOR TO ACCEPTANCE INSPECTION.
    - MINIMUM OF 3 WEEKS HAVE ELAPSED FOLLOWING LAYING OF SOD.
    - A MINIMUM OF TWO CUTS HAVE TAKEN PLACE.
    - SODDED AREAS HAVE BEEN TOP-DRESSED, SEEDED AND AERATED

- PLANTING NOTES:**
- CONTRACTOR TO VERIFY LOCATION OF ALL SERVICES PRIOR TO ANY EXCAVATION.
  - LOCATIONS OF ALL PLANT MATERIALS TO BE STAKED BY THE CONTRACTOR AND VERIFIED IN THE FIELD BY LANDSCAPE ARCHITECT PRIOR TO THE EXCAVATION OF PITS.
  - ALL PLANT MATERIAL SHALL BE NURSERY GROWN STOCK UNLESS OTHERWISE NOTED.
  - DECIDUOUS TREES TO HAVE A MINIMUM 1800 CLEAR STEM ABOVE GRADE.
  - ALL PLANT MATERIAL SHALL BE WARRANTED FOR TWO YEARS FROM THE DATE OF PERFORMANCE ACCEPTANCE AS DETERMINED BY THE LANDSCAPE ARCHITECT.
  - ALL STEEL T-BARS TO BE REMOVED AT THE ONE YEAR INTERIM INSPECTION UNLESS OTHERWISE DIRECTED BY THE LANDSCAPE ARCHITECT.
  - CONTRACTOR TO MAKE GOOD ALL EXISTING AREAS DAMAGED BY HIS WORK TO THE SATISFACTION OF THE LANDSCAPE ARCHITECT.
  - PERIODIC REVIEWS OF PLANTING SHALL BE CARRIED OUT BY THE LANDSCAPE ARCHITECT.
  - ANY PROPOSED SUBSTITUTIONS OF PLANT SPECIES SHALL BE MADE WITH PLANTS OF EQUIVALENT OVERALL FORM, HEIGHT, BRANCHING HABIT, FLOWER, LEAF, COLOR, FRUIT AND CULTURE AND ONLY AFTER APPROVAL OF THE LANDSCAPE ARCHITECT.
- SHRUB NOTES:**
- PLACE THE SHRUB AS UPRIGHT AS POSSIBLE, INCLUDING ON SLOPES.
  - PLANT SHRUBS AT THE PROPER DEPTH AS INDICATED ON THE DRAWINGS.
  - PACK THE SOIL WELL AROUND THE PLANT BASE TO REMOVE AIR POCKETS, BUT DO NOT COMPACT SOIL. PRESS SOIL GENTLY BUT FIRMLY TO PREVENT SHOCKING THE ROOTS.
  - PLANT SPECIES ACCORDING TO THE QUANTITIES AND SPACING AS INDICATED ON THE DRAWINGS.
  - PLANT SHRUBS AT THE PROPER DEPTH THE ROOT COLLARS SHOULD BE AT GROUND LEVEL.
  - MULCH THE SOIL SURFACE AS INDICATED ON DRAWINGS.
  - WATER PLANTS THOROUGHLY FOLLOWING PLANTING.
  - REFER TO SPECIFICATIONS FOR MAINTENANCE REQUIREMENTS.

**PLANT LIST**

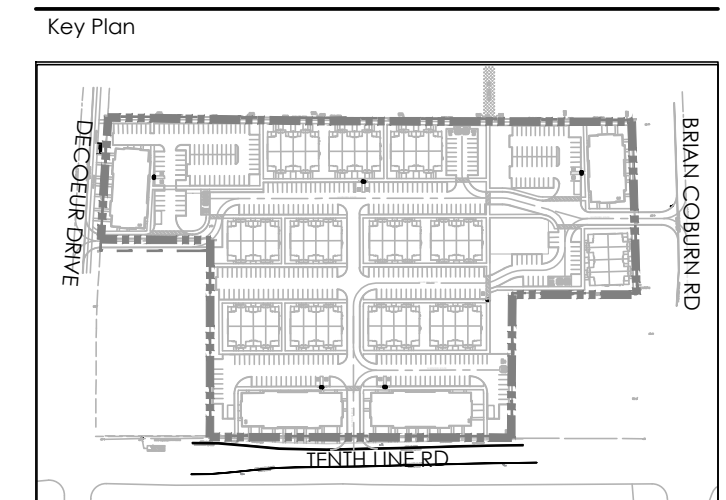
KEY	QTY.	BOTANICAL NAME	COMMON NAME	CAL/HT.	ROOT
				(mm)	
<b>LARGE DECIDUOUS TREES (15-30m)</b>					
AR	17	ACER X FREEMANI 'ARMSTRONG'	RED MAPLE	60	B&B
AC	15	ACER RUBRUM	HONEYLOCUST	60	B&B
GS	6	GLEDITSIA TRIACANTHOS VAR. INERMIS	RED OAK	60	B&B
QR	3	QUERCUS RUBRA		60	B&B
	27				
<b>MEDIUM DECIDUOUS TREES (7.5m-14m)</b>					
AR	17	ACER X FREEMANI 'ARMSTRONG'	ARMSTRONG MAPLE	60	B&B
PA	19	PYRUS CALLERYANA 'CAPITAL'	CAPITAL PEAR	60	B&B
QF	22	QUERCUS ROBUR 'FASTIGIATA'	PYRAMIDAL ENGLISH OAK	60	B&B
SH	15	SORBUS X HYBRIDA	MOUNTAIN-ASH	60	B&B
TM	17	TILIA MONGOLICA	MONGOLIAN LINDEN	60	B&B
	90				
<b>TREEFORM SHRUBS</b>					
Ca	21	CORNUS ALTERNIFOLIA	PAGODA DOGWOOD	40	B&B
Ck	22	CORNUS KOUSA 'SATOMI'	SATOMI FLOWERING DOGWOOD	175cm	TREEFORM
Ea	10	EUCONITUS ALATUS 'COMPACTUS'	DWARF BURNING BUSH	150cm	TREEFORM
Pc	12	PRUNUS X CISTENA	PURPLE-LEAF SAND CHERRY	175cm	TREEFORM
	65				
<b>CONIFEROUS TREES</b>					
PP	4	PICEA PUNGENS 'AVATAR'	AVATAR BLUE SPRUCE	500cm	B&B
PS	3	PINUS STROBUS	WHITE PINE	500cm	B&B
	9				
<b>DECIDUOUS SHRUBS</b>					
Cs	35	CORNUS SERICEA 'FARROW'	ARCTIC FIRE DOGWOOD	175cm	3 GAL.
Ef	3	EUCONYMIUS ALATUS 'FIREBALL'	FIREBALL BURNING BUSH	175cm	3 GAL.
Po	24	PHYSCOCARPUS OPUFOLIUS 'DIABOLO'	DIABOLO NINEBARK	175cm	3 GAL.
Pv	3	PHILADELPHUS X VIRGINIALIS	MOCK ORANGE	175cm	3 GAL.
	65				
<b>CONIFEROUS SHRUBS</b>					
Pm	12	PINUS MUGO VAR. PUMILIO	DWARF MUGO VAR. PUMILIO	125cm	3 GAL.

**GRASSES**

cm	382	CAREX MORROWII 'ICE DANCE'	ICE DANCE SEDGE	30cm	1 GAL.
co	57	CALAMAGROSTIS X ACUTIFLORA 'KARL FOERSTER'	KARL FOERSTER REED GRASS	150cm	1 GAL.
dc	145	DESCHAMPSIA CESPITOSA	TUFTED HAIR GRASS	100cm	1 GAL.
mc	191	MOLINIA CAERULEA 'VARIEGATA'	VARIEGATED PURPLE MOOR GRASS	70cm	1 GAL.
	775				
<b>PERENNIALS</b>					
om	78	ALLIUM X 'MILLENIUM'	ORNAMENTAL ONION	50cm	1 GAL.
os	34	ASTER NOVAE-ANGLOE 'PURPLE DOME'	NEW ENGLAND ASTER	50cm	1 GAL.
rd	40	RUDBECKIA HIRTA	BLACK-EYED SUSAN	60cm	1 GAL.
ha	22	HOSTA 'AUGUST MOON'	AUGUST MOON HOSTA	45cm	1 GAL.
hs	9	HOSTA 'HOSTA SILVER BAY'	SILVER BAY HOSTA	40cm	1 GAL.
hg	29	HOSTA 'GREAT ARRIVAL'	GREAT ARRIVAL	45cm	1 GAL.
sm	271	SEDUM 'MAESTRO'	MAESTRO STONECROP	65cm	1 GAL.
	483				



Contractor shall check all dimensions on the work and report any discrepancy to the Landscape Architect before proceeding. All drawings and specifications are the property of the Landscape Architect and must be returned at the completion of the work. This drawing is not to be used for construction until signed by the Landscape Architect.



**LEGEND**

PROPERTY LINE

**FENCING**

- 2.0m WASTE ENCLOSURE FENCE WITH PEDESTRIAN ACCESS GATE

**PLANTING**

- LARGE DECIDUOUS TREE
- MEDIUM DECIDUOUS TREE
- TREEFORM SHRUBS
- CONIFEROUS TREE
- COLUMNAR TREE
- DECIDUOUS SHRUB
- CONIFEROUS SHRUB
- GRASSES/PERENNIALS
- SOD

**SURFACING**

- UNIT PAVING WALKWAYS
- UNIT PAVING ENTRANCES
- RIVERSTONE PAVING
- CONCRETE PAVING
- HEAVY DUTY CONCRETE PAVING
- STONEDUST PAVING

**UTILITIES**

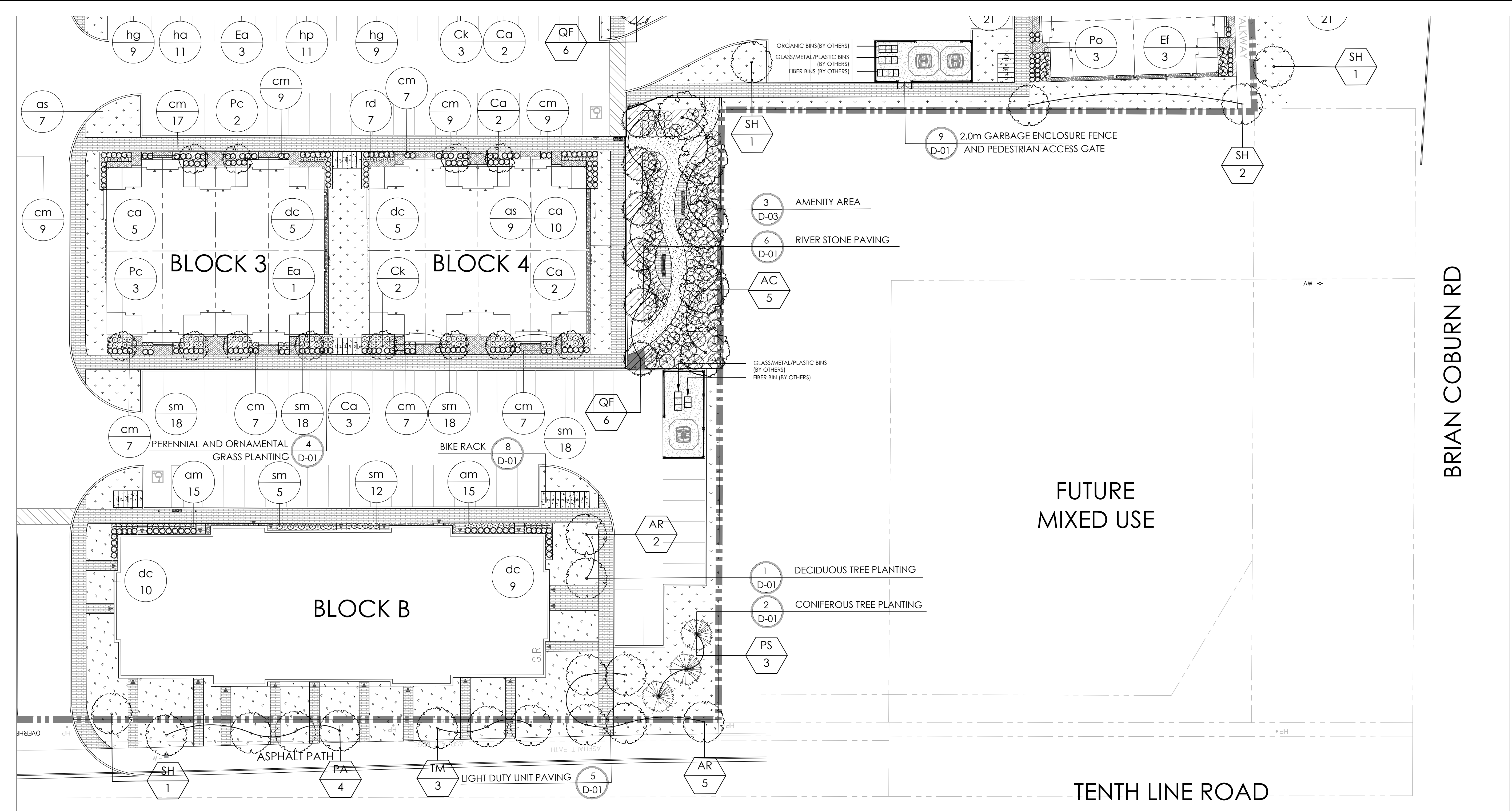
- PROPOSED HYDRO TRANSFORMER
- PROPOSED CABLE PEDESTAL
- PROPOSED BELL PEDESTAL
- CURB STOP
- PROPOSED BELL CABINET
- PROPOSED STREET LIGHT
- FIRE HYDRANT
- EXISTING HYDRO POLE

**PLANTING KEY**

- XX-00 TREE SPECIES QUANTITY
- XX-00 SHRUB SPECIES QUANTITY

**DETAIL KEY**

- 1-D-01 DETAIL NO. SHEET NO.



- GENERAL NOTES:**
- ACER RUBRUM AND QUERCUS RUBRA TO BE SPRING DUG SPECIMENS AND PLANTED IN THE SPRING ONLY.
  - THE LOCATION OF THE TREES SHOWN ON THIS PLAN IS APPROXIMATE AND SHALL NOT BE SCALED FROM THIS DRAWING. THIS PLAN MUST BE READ IN CONJUNCTION WITH THE APPROVED CUP AND CITY CROSS SECTIONS.
  - CONTRACTOR SHALL ENSURE THAT ALL UTILITY LOCATIONS ARE OBTAINED PRIOR TO ANY EXCAVATION FOR LANDSCAPING.
  - LOCATION OF ALL PLANT MATERIALS TO BE STAKED BY THE CONTRACTOR AND VERIFIED IN THE FIELD BY LANDSCAPE ARCHITECT & CITY OF OTTAWA PRIOR TO THE EXCAVATION OF PITS.
  - ALL PLANT MATERIAL SHALL BE NURSERY GROWN STOCK UNLESS OTHERWISE NOTED.
  - TREES TO HAVE A MINIMUM 1800 CLEAR STEM ABOVE GRADE.
  - PLACE SOD ON A MINIMUM 150mm TOPSOIL.
  - CONTRACTOR TO MAKE GOOD ALL EXISTING AREAS DAMAGED BY HIS WORK TO THE SATISFACTION OF THE CITY OF OTTAWA.
  - THE CITY WILL BE NOTIFIED IF ANY TREES CANNOT BE LOCATED OR PLANTED DUE TO CONFLICTS WITH UTILITIES OR DRIVEWAYS. THE REQUIRED TREES NOT PLANTED ARE SUBJECT TO TREE BANKING. THE FINAL NUMBER OF TREES TO BE BANKED WILL BE PROVIDED TO THE CITY FOLLOWING ALL PLANTINGS.
  - ALL PLANT MATERIAL SHALL BE WARRANTED FOR TWO YEARS FROM THE DATE OF PERFORMANCE ACCEPTANCE AS DETERMINED BY THE CITY OF OTTAWA.
  - PERIODIC REVIEWS OF PLANTING SHALL BE CARRIED OUT BY THE LANDSCAPE ARCHITECT.
  - PLANTINGS TO BE STAKED FOR APPROVAL PRIOR TO CONSTRUCTION.
  - CITY GRASS CUTTING RESPONSIBILITIES FOR SODDED AREAS SHALL BEGIN FOLLOWING PERFORMANCE ACCEPTANCE INSPECTION BY THE LANDSCAPE ARCHITECT AND THE CITY. ACCEPTANCE WILL BE PROVIDED ONLY IF:
    - SOD IS PROPERLY ESTABLISHED.
    - TURF IS FREE OF DEAD SPOTS AND WEEDS.
    - SODDED AREAS HAVE BEEN CUT WITHIN 24 HOURS PRIOR TO ACCEPTANCE INSPECTION.
    - MINIMUM OF 3 WEEKS HAVE ELAPSED FOLLOWING LAYING OF SOD.
    - A MINIMUM OF TWO CUTS HAVE TAKEN PLACE.
    - SODDED AREAS HAVE BEEN TOP-DRESSED, SEEDED AND AERATED.

- PLANTING NOTES:**
- CONTRACTOR TO VERIFY LOCATION OF ALL SERVICES PRIOR TO ANY EXCAVATION.
  - LOCATIONS OF ALL PLANT MATERIALS TO BE STAKED BY THE CONTRACTOR AND VERIFIED IN THE FIELD BY LANDSCAPE ARCHITECT PRIOR TO THE EXCAVATION OF PITS.
  - ALL PLANT MATERIAL SHALL BE NURSERY GROWN STOCK UNLESS OTHERWISE NOTED.
  - DECIDUOUS TREES TO HAVE A MINIMUM 1800 CLEAR STEM ABOVE GRADE.
  - ALL PLANT MATERIAL SHALL BE WARRANTED FOR TWO YEARS FROM THE DATE OF PERFORMANCE ACCEPTANCE AS DETERMINED BY THE LANDSCAPE ARCHITECT.
  - ALL STEEL T-BARS TO BE REMOVED AT THE ONE YEAR INTERIM INSPECTION UNLESS OTHERWISE DIRECTED BY THE LANDSCAPE ARCHITECT.
  - CONTRACTOR TO MAKE GOOD ALL EXISTING AREAS DAMAGED BY HIS WORK TO THE SATISFACTION OF THE LANDSCAPE ARCHITECT.
  - PERIODIC REVIEWS OF PLANTING SHALL BE CARRIED OUT BY THE LANDSCAPE ARCHITECT.
  - ANY PROPOSED SUBSTITUTIONS OF PLANT SPECIES SHALL BE MADE WITH PLANTS OF EQUIVALENT OVERALL FORM, HEIGHT, BRANCHING HABIT, FLOWER, LEAF, COLOR, FRUIT AND CULTURE AND ONLY AFTER APPROVAL OF THE LANDSCAPE ARCHITECT.
- SHRUB NOTES:**
- PLACE THE SHRUB AS UPRIGHT AS POSSIBLE, INCLUDING ON SLOPES.
  - PLANT SHRUBS AT THE PROPER DEPTH AS INDICATED ON THE DRAWINGS.
  - PACK THE SOIL WELL AROUND THE PLANT BASE TO REMOVE AIR POCKETS, BUT DO NOT COMPACT SOIL. PRESS SOIL GENTLY BUT FIRMLY TO PREVENT SHOCKING THE ROOTS.
  - PLACE SPECIES ACCORDING TO THE QUANTITIES AND SPACING AS INDICATED ON THE DRAWINGS.
  - PLANT SHRUBS AT THE PROPER DEPTH THE ROOT COLLARS SHOULD BE AT GROUND LEVEL.
  - MULCH THE SOIL SURFACE AS INDICATED ON DRAWINGS.
  - WATER PLANTS THOROUGHLY FOLLOWING PLANTING.
  - REFER TO SPECIFICATIONS FOR MAINTENANCE REQUIREMENTS.

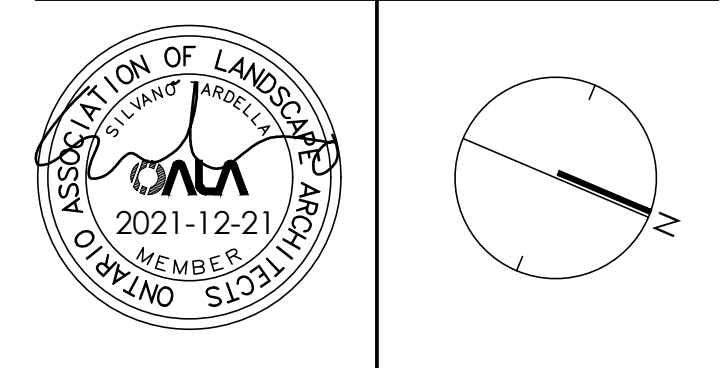
**PLANT LIST**

KEY	QTY.	BOTANICAL NAME	COMMON NAME	CAL/HT.	ROOT
<b>LARGE DECIDUOUS TREES (1.5-30m)</b>					
AR	17	ACER X FREEMANI 'ARMSTRONG'	ARMSTRONG MAPLE	40	B&B
AC	18	ACER RUBRUM	RED MAPLE	60	B&B
GS	6	GLEDITSIA TRIACANTHOS VAR. INERMIS	HONEYLOCUST	60	B&B
QR	3	QUERCUS RUBRA	RED OAK	60	B&B
	27				
<b>MEDIUM DECIDUOUS TREES (7.5m-14m)</b>					
AR	17	ACER X FREEMANI 'ARMSTRONG'	ARMSTRONG MAPLE	40	B&B
PA	19	PYRUS CALLERYANA 'CAPITAL'	CAPITAL PEAR	60	B&B
QF	22	QUERCUS ROBUR 'FASTIGIATA'	PYRAMIDAL ENGLISH OAK	60	B&B
SH	15	SORBUS X HYBRIDA	MOUNTAIN-ASH	60	B&B
TM	12	TILIA MONGOLICA	MONGOLIAN LINDEN	60	B&B
	90				
<b>TREEFORM SHRUBS</b>					
Ca	21	CORNUS ALTERNIFOLIA	PAGODA DOGWOOD	40	B&B
Ck	22	CORNUS KOUSA 'SATOMI'	SATOMI FLOWERING DOGWOOD	175cm	TREEFORM
Ea	10	EUCONYMIUS ALATUS 'COMPACTUS'	DWARF BURNING BUSH	150cm	TREEFORM
Pc	12	PRUNUS X CISTENA	PURPLE-LEAF SAND CHERRY	175cm	TREEFORM
	65				
<b>CONIFEROUS TREES</b>					
PP	6	PICEA PUNGENS 'AVATAR'	AVATAR BLUE SPRUCE	500cm	B&B
PS	3	PINUS STROBUS	WHITE PINE	500cm	B&B
	9				
<b>DECIDUOUS SHRUBS</b>					
CS	35	CORNUS SERICEA 'FARROW'	ARCTIC FIRE DOGWOOD	175cm	3 GAL.
EF	3	EUCONYMIUS ALATUS 'FIREBALL'	FIREBALL BURNING BUSH	175cm	3 GAL.
Po	24	PHYSOCARPUS OPUULIFOLIUS 'DIABOLO'	DIABOLO NINEBARK	175cm	3 GAL.
Pv	3	PHILADELPHUS X VIRGINIALIS	MOCK ORANGE	175cm	3 GAL.
	65				
<b>CONIFEROUS SHRUBS</b>					
Pm	12	PINUS MUGO VAR. PUMILIO	DWARF MUGO VAR. PUMILIO	125cm	3 GAL.

**GRASSES**

cm	382	CAREX MORROWII 'ICE DANCE'	ICE DANCE SEDGE	30cm	1 GAL.
co	57	CALAMAGROSTIS X ACUTIFLORA 'KARL FOERSTER'	KARL FOERSTER REED GRASS	150cm	1 GAL.
dc	145	DESCHAMPSIA CESPIITOSA	TURTLED HAIR GRASS	100cm	1 GAL.
mc	191	MOLINIA CAERULEA 'VARIEGATA'	VARIEGATED PURPLE MOOR GRASS	70cm	1 GAL.
	775				
<b>PERENNIALS</b>					
om	78	ALLIUM X 'MILLENIUM'	ORNAMENTAL ONION	50cm	1 GAL.
as	34	ASTER NOVAE-ANGLIAE 'PURPLE DOME'	NEW ENGLAND ASTER	50cm	1 GAL.
rd	40	RUIDOECKIA HIRTA	BLACK-EYED SUSAN	60cm	1 GAL.
ha	22	HOSTA 'AUGUST MOON'	AUGUST MOON HOSTA	45cm	1 GAL.
hs	9	HOSTA 'HOSTA SILVER BAY'	SILVER BAY HOSTA	40cm	1 GAL.
hg	29	HOSTA 'GREAT ARRIVAL'	GREAT ARRIVAL	65cm	1 GAL.
sm	221	SEDUM 'MAESTRO'	MAESTRO STONECROP	60cm	1 GAL.
	483				

2	Re-Issued for First Submission	Dec.21/21
1	Issued for First Submission	Dec.10/21
No.	Description	Date



**NAK** design strategies  
 1285 WELLINGTON STREET, OTTAWA, ON K1Y 3A8 CANADA  
 T 613.237.2345 F 613.237.6423 NAKDESIGNSTRATEGIES.COM

**MATTAMY HOMES**  
 DECOUPER DRIVE  
 2370 TENTH LINE ROAD

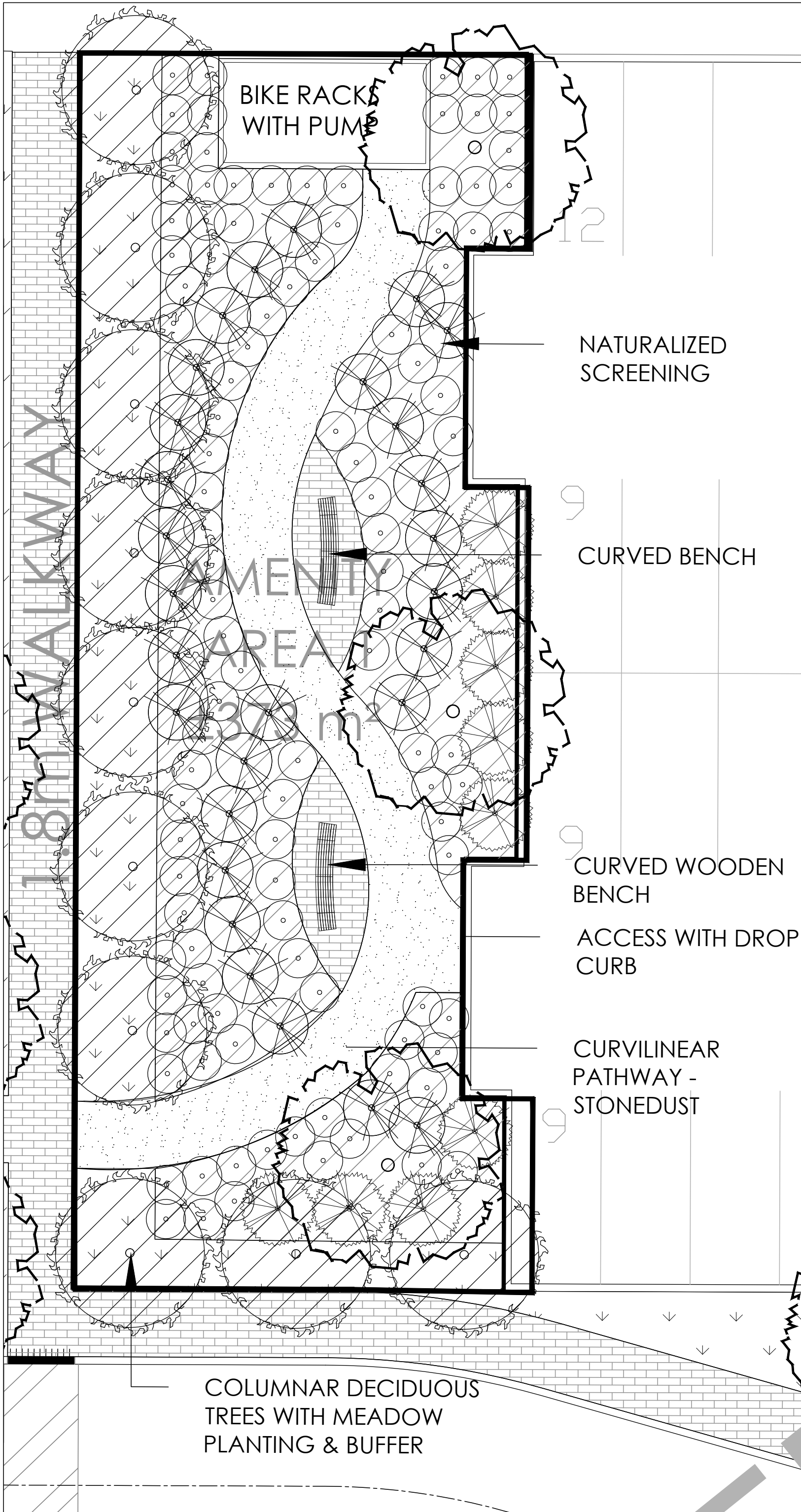
Title: LANDSCAPE PLAN  
 Date: DEC 2021  
 Scale: 1:250  
 Drawn: JC, SH  
 Checked: JM  
 Job No.: 21-165



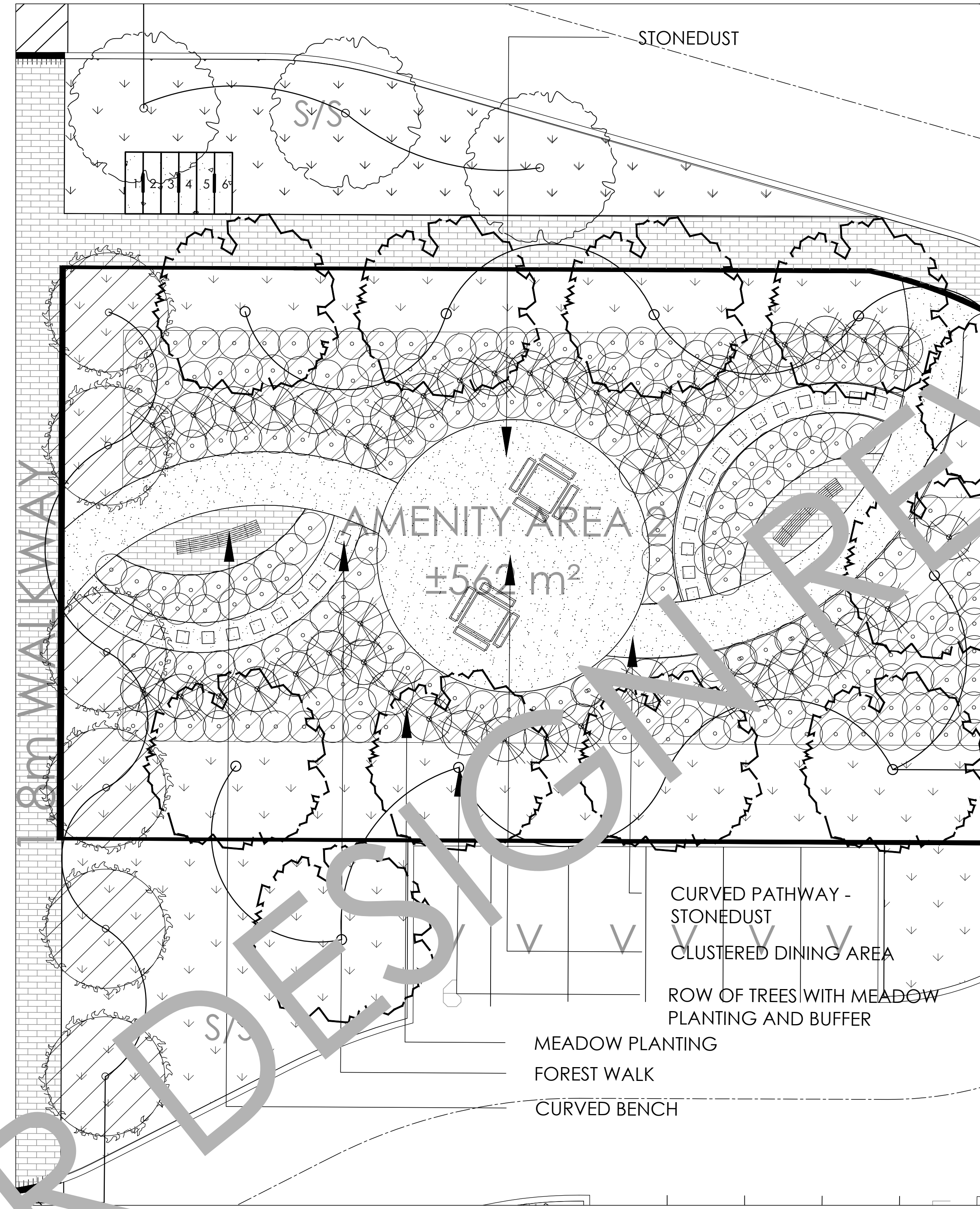




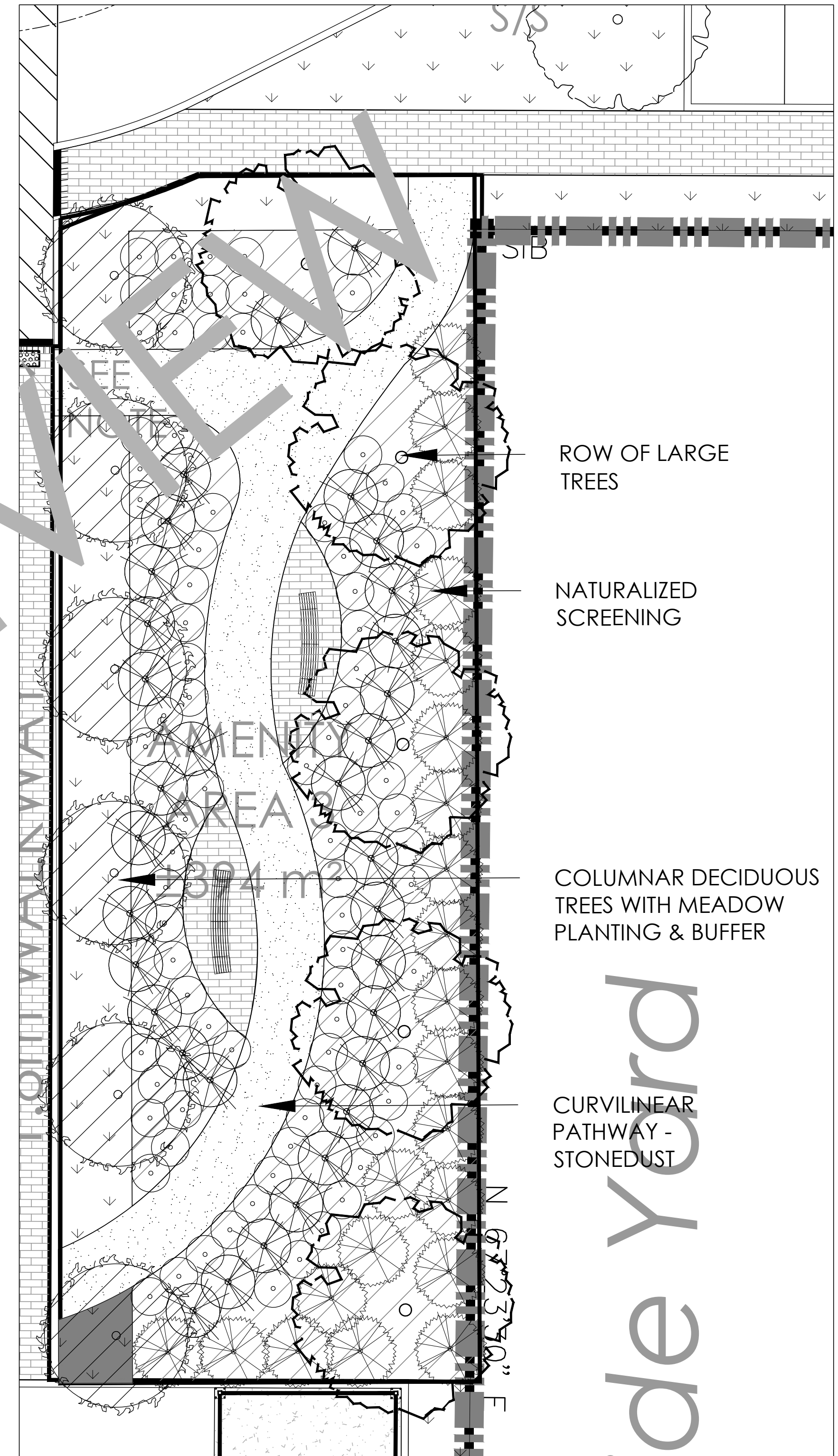
Contractor shall check all dimensions on the work and report any discrepancy to the Landscape Architect before proceeding. All drawings and specifications are the property of the Landscape Architect and must be returned at the completion of the work. This drawing is not to be used for construction until signed by the Landscape Architect.



1 AMENITY AREA #1  
1:100



2 AMENITY AREA #2  
N.T.S.



3 AMENITY AREA #3  
N.T.S.

No.	Description	Date
2	Re-issued for First Submission	Dec.21/21
1	Issued for First Submission	Dec.10/21
	Revision	

City Approval Stamp



**NAK**  
design strategies

1285 WELLINGTON STREET, OTTAWA, ON K1Y 3A8 CANADA  
T 613.237.2346 F 613.237.4423 NAKDESIGNSTRATEGIES.COM

Project  
**MATTAMY HOMES  
DECOEUR DRIVE**  
2370 TENTH LINE ROAD

Title  
DETAILS

Date OCT 2021  
Scale 1:250  
Drawn JC  
Checked TM  
Job No. 21-165

Sheet  
D2

UNDER DESIGN REVIEW