

ALL DIMENSIONS ARE GIVEN IN MILLIMETRES UNLESS OTHERWISE INDICATED.
DO NOT SCALE DRAWINGS.
CONTRACTOR SHALL VERIFY AND CHECK ALL DIMENSIONS AND CONDITIONS ON SITE PRIOR TO STARTING ANY OF THE WORK AND REPORT ANY DISCREPANCY TO THE ARCHITECT AND CONSULTANTS BEFORE PROCEEDING. CONSTRUCTION MUST CONFORM TO ALL APPLICABLE CODES AND REQUIREMENTS OF AUTHORITIES HAVING JURISDICTION PERTAINING TO THIS APPLICATION.
THE ARCHITECT BEARS NO RESPONSIBILITY FOR THE INTERPRETATION OF THESE DOCUMENTS BY THE CONTRACTOR. UPON WRITTEN APPLICATION THE ARCHITECT WILL PROVIDE WRITTEN OR GRAPHIC CLARIFICATION AS SUPPLEMENTARY INFORMATION REGARDING THE INTENT OF THE CONTRACT DOCUMENTS.
LOCATIONS OF EXPOSED MECHANICAL OR ELECTRICAL DEVICES, FITTINGS AND FIXTURES ARE INDICATED ON ARCHITECTURAL DRAWINGS, WHICH SHALL GOVERN OVER THE MECHANICAL AND ELECTRICAL DRAWINGS. THOSE ITEMS NOT CLEARLY LOCATED, TO BE LOCATED AS DIRECTED BY THE ARCHITECT.
NO INVESTIGATION HAS BEEN UNDERTAKEN OR REPORTED ON THIS OFFICE IN REGARDS TO THE ENVIRONMENTAL CONDITIONS OR POLLUTIONS OF THIS SITE.
COPYRIGHT 2006 KOHN ARCHITECTS INC.
COPYRIGHT OF THIS DRAWING AND THE DESIGN INTENT IS RESERVED BY THE ARCHITECT. THE DRAWINGS AND ALL ASSOCIATED DOCUMENTS ARE AN INSTRUMENT OF SERVICE BY KOHN ARCHITECTS INC. THE DRAWINGS AND THE INFORMATION CONTAINED THEREIN MAY NOT BE REPRODUCED IN WHOLE OR IN PART WITHOUT PRIOR WRITTEN PERMISSION OF THE KOHN ARCHITECTS INC.
ALL DRAWINGS ARE THE PROPERTY OF THE ARCHITECT AND MUST BE RETURNED ON REQUEST.

ISSUE DATES AND DISTRIBUTION LOG

No.	Date	Note
1	12/10/21	ISSUED FOR SPA
2	12/09/22	REISSUED FOR SPA



CITY PLAN NUMBER XXXX
CITY FILE NO. D07-12-21-0224



DECOEUR DRIVE (REISSUED FOR SPA)

<p>DEVELOPER / OWNER: MATTAMY HOMES 50 HINES RD, SUITE 100 OTTAWA, ONTARIO K2K 2M5 T: 613-831-4115</p>	<p>ARCHITECTURAL CONSULTANT: KOHNS PARTNERSHIP ARCHITECTS INC. 116 SPADINA AVENUE, SUITE 501 TORONTO, ONTARIO M5V 2K6 T: 416-703-6700</p>	<p>MECHANICAL CONSULTANT: QUADRANT ENGINEERING 201-210 COLONNADE ROAD S, NEPEAN, ONTARIO K2E 7L5 T: 613-567-1487</p>	<p>ELECTRICAL CONSULTANT: QUADRANT ENGINEERING 201-210 COLONNADE ROAD S, NEPEAN, ONTARIO K2E 7L5 T: 613-567-1487</p>	<p>STRUCTURAL CONSULTANT: GOODEVE STRUCTURAL INC. 77 AURIGA DRIVE, UNIT 18 OTTAWA, ONTARIO K2E 7Z7 T: 613-226-4558</p>
<p>CIVIL CONSULTANT: STANTEC CONSULTING LTD. 400-1331 CLYDE AVENUE OTTAWA, ONTARIO T: 613-722-4420</p>	<p>ACOUSTICAL CONSULTANT: GRADIENT WIND 127 WALGREEN ROAD, OTTAWA, ONTARIO K0A 1L0 T: 613-836-0934</p>			

DRAWING LIST (SPA SET)

SHEET NUMBER	SHEET NAME	Issued for SPA (12/10/21)	Reissued for SPA (12/09/22)	Issue#3 (Add Date)	Issue#4 (Add Date)	Issue#5 (Add Date)

20-Site Plan Approval

Site Plan Submission									
A0 00	COVER SHEET								
A1 00	SITE PLAN AND SITE STATISTICS								
A1 01	OBC MATRIX								
A2 00	BLOCK A & B LEVEL 1 FLOOR PLAN								
A2 01	BLOCK A & B LEVEL 2 FLOOR PLAN								
A2 02	BLOCK A & B LEVEL 3 FLOOR PLAN								
A2 03	BLOCK A & B MPH FLOOR PLAN								
A2 04	BLOCK A & B ROOF PLAN								
A2 06	BLOCK C LEVEL 1 FLOOR PLAN								
A2 07	BLOCK C LEVEL 2 FLOOR PLAN								
A2 08	BLOCK C LEVEL 3 FLOOR PLAN								
A2 09	BLOCK C MPH FLOOR PLAN								
A2 10	BLOCK C ROOF PLAN								
A4 00	EAST AND WEST ELEVATIONS								
A4 01	NORTH AND SOUTH ELEVATIONS								
A4 02	BLOCK C NORTH AND SOUTH ELEVATIONS								
A4 03	BLOCK C WEST AND EAST ELEVATIONS								
A4 10	BLOCK A & B SECTIONS								
A4 20	BLOCK A & B SECTIONS								
A4 30	BLOCK C SECTIONS								
A4 40	BLOCK C SECTIONS								

Project:
DECOEUR DRIVE
MATTAMY HOMES
2370 TENTH LINE
OTTAWA ONTARIO
Drawing Title:
COVER SHEET
Project Manager Team: KB Project No: 21-107
Date Plotted: 2022-12-09 4:31:07 PM Scale:
Building No.: Drawing No.:

GENERAL NOTES:
 - BLOCK A PLANS SHOWN FOR REFERENCE
 - BLOCK B IS MIRRORED ABOUT THE EAST/ WEST PROJECT AXIS (DRIVE AISLE ACCESS OFF 10TH LINE ROAD)

FLOOR PLAN (ABOVE GRADE) SYMBOL LEGEND:

	AREA DRAINS
	FLOOR DRAINS
	ROOF DRAINS
	TRENCH DRAINS
	STANDPIPE HOSE VALVE CONNECTION
	FIRE EXTINGUISHER CABINET
	FIRE HOSE CABINET
	AUTO OPERATORS
	EXTERIOR ELECTRICAL OUTLET
	WALL MOUNTED EXTERIOR LIGHT FIXTURES (REFER TO ELECT. DWGS.)
	EXTENTS OF BUILDING ABOVE
	BARRIER FREE TURNING RADIUS
	AREA DESIGNATED FOR HIGH DENSITY FILING
	AREA AND EXTENTS OF ADJACENT BUILDING
	ELECTRICAL PANEL
	OVERFLOW SCUPPER

Kohn

Kohn Partnership Architects Inc.
 116 Spadina Avenue, Suite 501, Toronto ON M5V 2K6
 Tel 416.703.6700 www.kohnarchitects.com

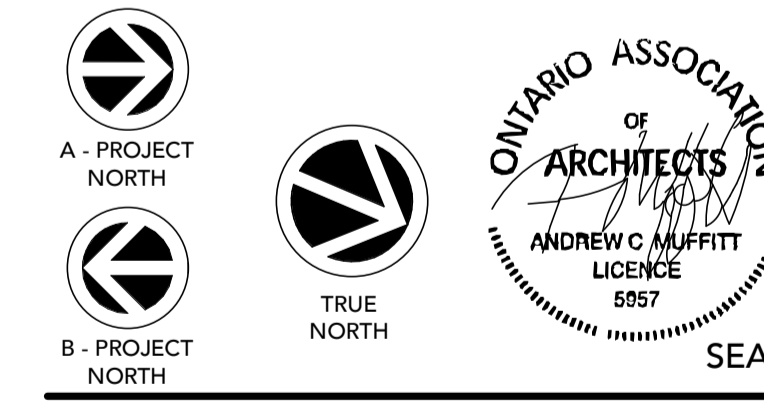
ALL DIMENSIONS ARE GIVEN IN MILLIMETRES UNLESS OTHERWISE INDICATED.
 DO NOT SCALE DRAWINGS.
 CONTRACTOR SHALL VERIFY AND CHECK ALL DIMENSIONS AND CONDITIONS ON SITE PRIOR TO STARTING ANY OF THE WORK AND REPORT ANY DISCREPANCY TO THE ARCHITECT AND CONSULTANTS BEFORE PROCEEDING. CONSTRUCTION MUST CONFORM TO ALL APPLICABLE CODES AND REQUIREMENTS OF AUTHORITIES HAVING JURISDICTION PERTAINING TO THIS APPLICATION.
 THE ARCHITECT BEARS NO RESPONSIBILITY FOR THE INTERPRETATION OF THESE DOCUMENTS BY THE CONTRACTOR. UPON WRITTEN APPLICATION THE ARCHITECT WILL PROVIDE WRITTEN OR GRAPHIC CLARIFICATION AS SUPPLEMENTARY INFORMATION REGARDING THE INTENT OF THE CONTRACT DOCUMENTS.
 LOCATIONS OF EXPOSED MECHANICAL OR ELECTRICAL DEVICES, FITTINGS AND FIXTURES ARE INDICATED ON ARCHITECTURAL DRAWINGS, WHICH SHALL GOVERN OVER THE MECHANICAL AND ELECTRICAL DRAWINGS. THOSE ITEMS NOT CLEARLY LOCATED, TO BE LOCATED AS DIRECTED BY THE ARCHITECT.
 NO INVESTIGATION HAS BEEN UNDERTAKEN OR REPORTED ON THIS OFFICE IN REGARDS TO THE ENVIRONMENTAL CONDITIONS OR POLLUTIONS OF THIS SITE.
 COPYRIGHT 2005 KOHN ARCHITECTS INC.
 COPYRIGHT OF THIS DRAWING AND THE DESIGN INTENT IS RESERVED BY THE ARCHITECT. THE DRAWINGS AND ALL ASSOCIATED DOCUMENTS ARE AN INSTRUMENT OF SERVICE BY KOHN ARCHITECTS INC. THE DRAWINGS AND THE INFORMATION CONTAINED THEREIN MAY NOT BE REPRODUCED IN WHOLE OR IN PART WITHOUT PRIOR WRITTEN PERMISSION OF THE KOHN ARCHITECTS INC.
 ALL DRAWINGS ARE THE PROPERTY OF THE ARCHITECT AND MUST BE RETURNED ON REQUEST.

ISSUE DATES AND DISTRIBUTION LOG

No.	Date	Note
1	12/10/21	ISSUED FOR SPA
2	12/09/22	REISSUED FOR SPA



CITY PLAN NUMBER XXXX
 CITY FILE NO. D07-12-21-0224



Project: **DECOEUR DRIVE**
 MATTAMY HOMES
 2370 TENTH LINE
 OTTAWA ONTARIO
 Drawing Title: **BLOCK A & B LEVEL 3 FLOOR PLAN**
 Project Manager Team: KB Project No. 21-107
 Date Plotted: 2022-12-09 5:09:17 PM Scale: As indicated
 Building No.: Drawing No.:

BLOCK A & B FLOOR PLAN - LEVEL 3
 SCALE: 1 : 100

A+B A2 02

ALL DIMENSIONS ARE GIVEN IN MILLIMETRES UNLESS OTHERWISE INDICATED.
DO NOT SCALE DRAWINGS.

CONTRACTOR SHALL VERIFY AND CHECK ALL DIMENSIONS AND CONDITIONS ON SITE PRIOR TO STARTING ANY OF THE WORK AND REPORT ANY DISCREPANCY TO THE ARCHITECT AND CONSULTANTS BEFORE PROCEEDING. CONSTRUCTION MUST CONFORM TO ALL APPLICABLE CODES AND REQUIREMENTS OF AUTHORITIES HAVING JURISDICTION PERTAINING TO THIS APPLICATION.

THE ARCHITECT BEARS NO RESPONSIBILITY FOR THE INTERPRETATION OF THESE DOCUMENTS BY THE CONTRACTOR. UPON WRITTEN APPLICATION THE ARCHITECT WILL PROVIDE WRITTEN OR GRAPHIC CLARIFICATION AS SUPPLEMENTARY INFORMATION REGARDING THE INTENT OF THE CONTRACT DOCUMENTS.

LOCATIONS OF EXPOSED MECHANICAL OR ELECTRICAL DEVICES, FITTINGS AND FIXTURES ARE INDICATED ON ARCHITECTURAL DRAWINGS, WHICH SHALL GOVERN OVER THE MECHANICAL AND ELECTRICAL DRAWINGS. THOSE ITEMS NOT CLEARLY LOCATED, TO BE LOCATED AS DIRECTED BY THE ARCHITECT.

NO INVESTIGATION HAS BEEN UNDERTAKEN OR REPORTED ON THIS OFFICE IN REGARDS TO THE ENVIRONMENTAL CONDITIONS OR POLLUTIONS OF THIS SITE.

COPYRIGHT 2005 KOHN ARCHITECTS INC.

COPYRIGHT OF THIS DRAWING AND THE DESIGN INTENT IS RESERVED BY THE ARCHITECT. THE DRAWINGS AND ALL ASSOCIATED DOCUMENTS ARE AN INSTRUMENT OF SERVICE BY KOHN ARCHITECTS INC. THE DRAWINGS AND THE INFORMATION CONTAINED THEREIN MAY NOT BE REPRODUCED IN WHOLE OR IN PART WITHOUT PRIOR WRITTEN PERMISSION OF THE KOHN ARCHITECTS INC.

ALL DRAWINGS ARE THE PROPERTY OF THE ARCHITECT AND MUST BE RETURNED ON REQUEST.

ISSUE DATES AND DISTRIBUTION LOG

No.	Date	Note
1	12/10/21	ISSUED FOR SPA
2	12/09/22	REISSUED FOR SPA

MATERIAL LEGEND

- 1 ARCHITECTURAL BLOCK (WHITE)
- 2 FIBER CEMENT PANEL (MIDNIGHT BLACK)
- 3 SHIP LAP FIBER CEMENT PANEL (WOOD FINISH)
- 4 FIBER CEMENT PANEL (COBBLE STONE)
- 5 WINDOW WALL ALUMINUM (BLACK)
- 6 GLASS SPANDREL (GREY)
- 7 GLASS SPANDREL (DARK GREY)
- 8 CLEAR GLASS
- 9 STEEL CANOPY (BLACK)
- 10 LOUVER (GREY)
- 11 RAILING (BLACK)
- 12 PAINTED STEEL (GREY)



BLOCK C EAST ELEVATION 1
SCALE: 1 : 100 A4 03



BLOCK C WEST ELEVATION 2
SCALE: 1 : 100 A4 03

CITY PLAN NUMBER XXXX

CITY FILE NO. D07-12-21-0224



Project: **DECOEUR DRIVE**

MATTAMY HOMES
2370 TENTH LINE

OTTAWA ONTARIO

Drawing Title: **BLOCK C WEST AND EAST ELEVATIONS**

Project Manager Team: KB Project No. 21-107

Date Plotted: 2022-12-09 4:31:59 PM Scale: As indicated

Building No.: Drawing No.:

C A4 03

ALL DIMENSIONS ARE GIVEN IN MILLIMETRES UNLESS OTHERWISE INDICATED.
DO NOT SCALE DRAWINGS.

CONTRACTOR SHALL VERIFY AND CHECK ALL DIMENSIONS AND CONDITIONS ON SITE PRIOR TO STARTING ANY OF THE WORK AND REPORT ANY DISCREPANCY TO THE ARCHITECT AND CONSULTANTS BEFORE PROCEEDING. CONSTRUCTION MUST CONFORM TO ALL APPLICABLE CODES AND REQUIREMENTS OF AUTHORITIES HAVING JURISDICTION PERTAINING TO THIS APPLICATION.

THE ARCHITECT BEARS NO RESPONSIBILITY FOR THE INTERPRETATION OF THESE DOCUMENTS BY THE CONTRACTOR. UPON WRITTEN APPLICATION THE ARCHITECT WILL PROVIDE WRITTEN OR GRAPHIC CLARIFICATION AS SUPPLEMENTARY INFORMATION REGARDING THE INTENT OF THE CONTRACT DOCUMENTS.

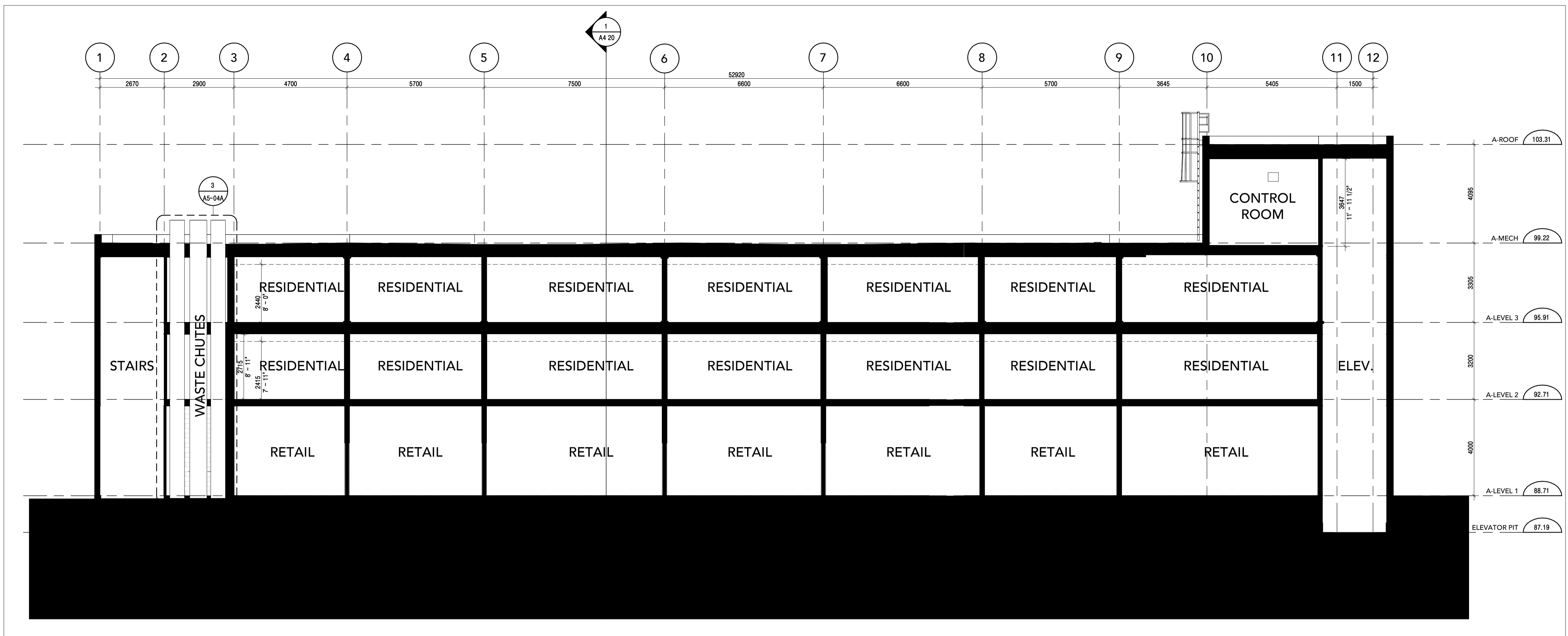
LOCATIONS OF EXPOSED MECHANICAL OR ELECTRICAL DEVICES, FITTINGS AND FIXTURES ARE INDICATED ON ARCHITECTURAL DRAWINGS, WHICH SHALL GOVERN OVER THE MECHANICAL AND ELECTRICAL DRAWINGS. THOSE ITEMS NOT CLEARLY LOCATED, TO BE LOCATED AS DIRECTED BY THE ARCHITECT.

NO INVESTIGATION HAS BEEN UNDERTAKEN OR REPORTED ON THIS OFFICE IN REGARDS TO THE ENVIRONMENTAL CONDITIONS OR POLLUTIONS OF THIS SITE.
COPYRIGHT 2006 KOHN ARCHITECTS INC.

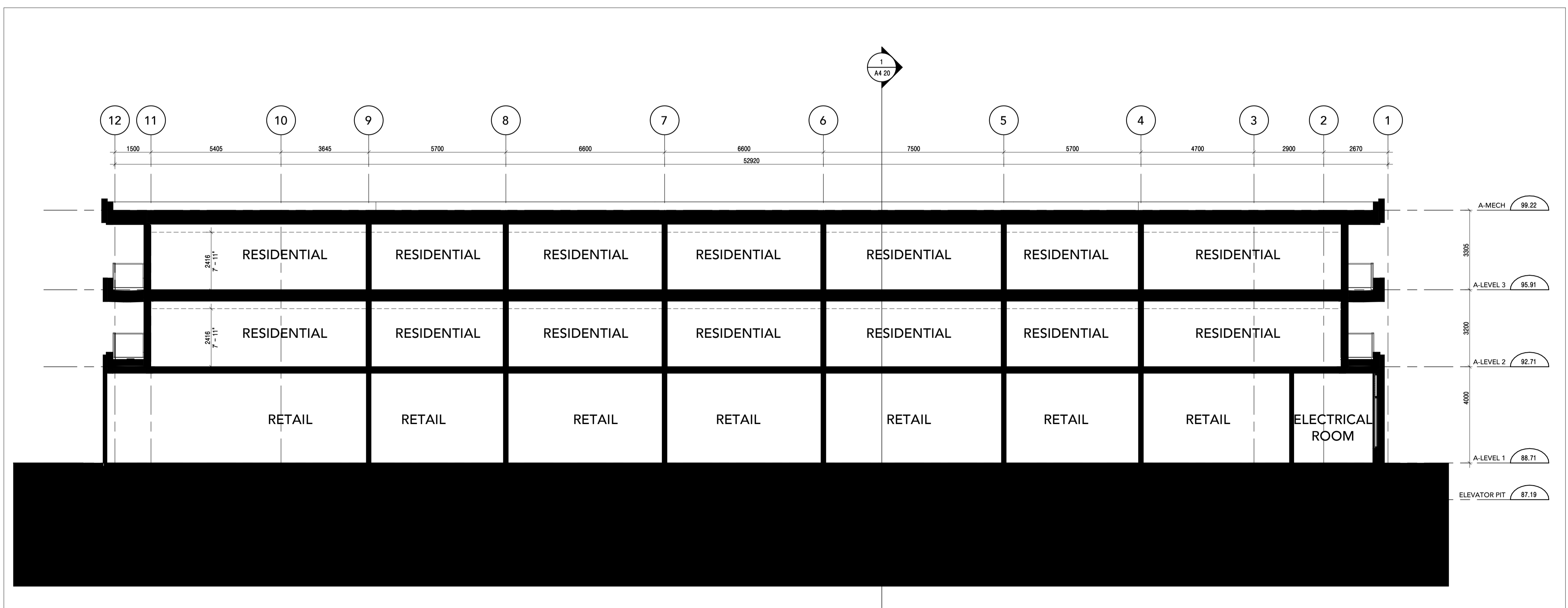
COPYRIGHT OF THIS DRAWING AND THE DESIGN INTENT IS RESERVED BY THE ARCHITECT. THE DRAWINGS AND ALL ASSOCIATED DOCUMENTS ARE AN INSTRUMENT OF SERVICE BY KOHN ARCHITECTS INC. THE DRAWINGS AND THE INFORMATION CONTAINED THEREIN MAY NOT BE REPRODUCED IN WHOLE OR IN PART WITHOUT PRIOR WRITTEN PERMISSION OF THE KOHN ARCHITECTS INC.
ALL DRAWINGS ARE THE PROPERTY OF THE ARCHITECT AND MUST BE RETURNED ON REQUEST.

ISSUE DATES AND DISTRIBUTION LOG

No.	Date	Note
1	12/10/21	ISSUED FOR SPA
2	12/09/22	REISSUED FOR SPA



BLOCK A & B EW SECTION 1
SCALE: 1 : 100



BLOCK A & B EW SECTION 2
SCALE: 1 : 100

CITY PLAN NUMBER XXXX

CITY FILE NO. D07-12-21-0224



Project: **DECOEUR DRIVE**

MATTAMY HOMES

2370 TENTH LINE

OTTAWA ONTARIO

Drawing Title: **BLOCK A & B SECTIONS**

Project Manager Team: KB Project No: 21-107

Date Plotted: 2022-12-09 4:32:00 PM Scale: 1 : 100

Building No.: Drawing No.:

A+B A4 10

ALL DIMENSIONS ARE GIVEN IN MILLIMETRES UNLESS OTHERWISE INDICATED.
DO NOT SCALE DRAWINGS.

CONTRACTOR SHALL VERIFY AND CHECK ALL DIMENSIONS AND CONDITIONS ON SITE PRIOR TO STARTING ANY OF THE WORK AND REPORT ANY DISCREPANCY TO THE ARCHITECT AND CONSULTANTS BEFORE PROCEEDING. CONSTRUCTION MUST CONFORM TO ALL APPLICABLE CODES AND REQUIREMENTS OF AUTHORITIES HAVING JURISDICTION PERTAINING TO THIS APPLICATION.

THE ARCHITECT BEARS NO RESPONSIBILITY FOR THE INTERPRETATION OF THESE DOCUMENTS BY THE CONTRACTOR. UPON WRITTEN APPLICATION THE ARCHITECT WILL PROVIDE WRITTEN OR GRAPHIC CLARIFICATION AS SUPPLEMENTARY INFORMATION REGARDING THE INTENT OF THE CONTRACT DOCUMENTS.

LOCATIONS OF EXPOSED MECHANICAL OR ELECTRICAL DEVICES, FITTINGS AND FIXTURES ARE INDICATED ON ARCHITECTURAL DRAWINGS, WHICH SHALL GOVERN OVER THE MECHANICAL AND ELECTRICAL DRAWINGS. THOSE ITEMS NOT CLEARLY LOCATED, TO BE LOCATED AS DIRECTED BY THE ARCHITECT.

NO INVESTIGATION HAS BEEN UNDERTAKEN OR REPORTED ON THIS OFFICE IN REGARDS TO THE ENVIRONMENTAL CONDITIONS OR POLLUTIONS OF THIS SITE.

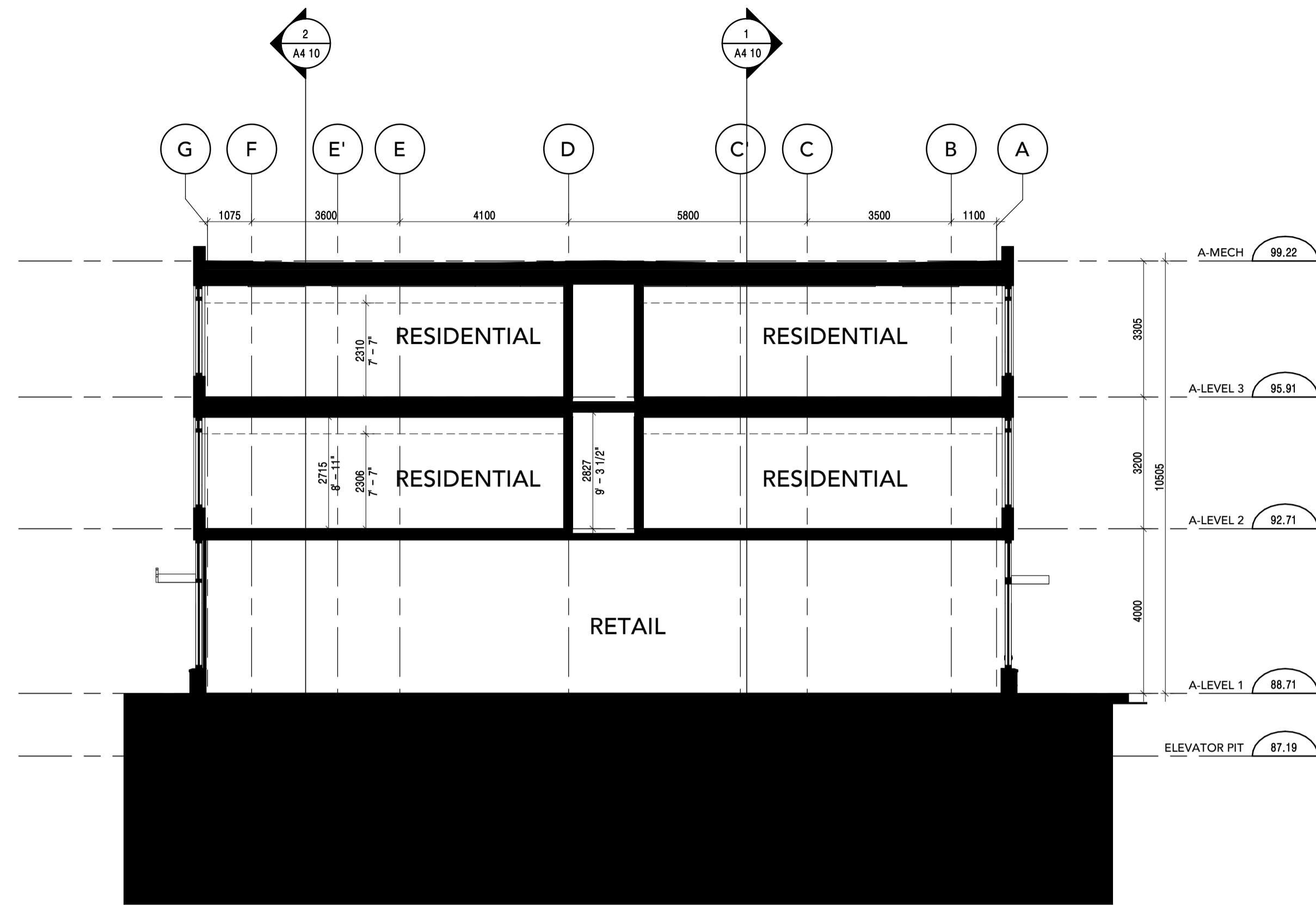
COPYRIGHT 2006 KOHN ARCHITECTS INC.

COPYRIGHT OF THIS DRAWING AND THE DESIGN INTENT IS RESERVED BY THE ARCHITECT. THE DRAWINGS AND ALL ASSOCIATED DOCUMENTS ARE AN INSTRUMENT OF SERVICE BY KOHN ARCHITECTS INC. THE DRAWINGS AND THE INFORMATION CONTAINED THEREIN MAY NOT BE REPRODUCED IN WHOLE OR IN PART WITHOUT PRIOR WRITTEN PERMISSION OF THE KOHN ARCHITECTS INC.

ALL DRAWINGS ARE THE PROPERTY OF THE ARCHITECT AND MUST BE RETURNED ON REQUEST.

ISSUE DATES AND DISTRIBUTION LOG

No.	Date	Note
1	12/10/21	ISSUED FOR SPA
2	12/09/22	REISSUED FOR SPA



BLOCK A & B NS SECTION
SCALE: 1 : 100

CITY PLAN NUMBER XXXX

CITY FILE NO. D07-12-21-0224



Project:
DECOEUR DRIVE

MATTAMY HOMES
2370 TENTH LINE

OTTAWA ONTARIO

Drawing Title:
BLOCK A & B SECTIONS

Project Manager Team: KB	Project No. 21-107
Date Plotted: 2022-12-09 4:32:01 PM	Scale: 1 : 100
Building No.:	Drawing No.:

A+B A4 20

ALL DIMENSIONS ARE GIVEN IN MILLIMETRES UNLESS OTHERWISE INDICATED.
DO NOT SCALE DRAWINGS.
CONTRACTOR SHALL VERIFY AND CHECK ALL DIMENSIONS AND CONDITIONS ON SITE PRIOR TO STARTING ANY OF THE WORK AND REPORT ANY DISCREPANCY TO THE ARCHITECT AND CONSULTANTS BEFORE PROCEEDING. CONSTRUCTION MUST CONFORM TO ALL APPLICABLE CODES AND REQUIREMENTS OF AUTHORITIES HAVING JURISDICTION PERTAINING TO THIS APPLICATION.

THE ARCHITECT BEARS NO RESPONSIBILITY FOR THE INTERPRETATION OF THESE DOCUMENTS BY THE CONTRACTOR. UPON WRITTEN APPLICATION THE ARCHITECT WILL PROVIDE WRITTEN OR GRAPHIC CLARIFICATION AS SUPPLEMENTARY INFORMATION REGARDING THE INTENT OF THE CONTRACT DOCUMENTS.

LOCATIONS OF EXPOSED MECHANICAL OR ELECTRICAL DEVICES, FITTINGS AND FIXTURES ARE INDICATED ON ARCHITECTURAL DRAWINGS, WHICH SHALL GOVERN OVER THE MECHANICAL AND ELECTRICAL DRAWINGS. THOSE ITEMS NOT CLEARLY LOCATED, TO BE LOCATED AS DIRECTED BY THE ARCHITECT.

NO INVESTIGATION HAS BEEN UNDERTAKEN OR REPORTED ON THIS OFFICE IN REGARDS TO THE ENVIRONMENTAL CONDITIONS OR POLLUTIONS OF THIS SITE.
COPYRIGHT 2006 KOHN ARCHITECTS INC.

COPYRIGHT OF THIS DRAWING AND THE DESIGN INTENT IS RESERVED BY THE ARCHITECT. THE DRAWINGS AND ALL ASSOCIATED DOCUMENTS ARE AN INSTRUMENT OF SERVICE BY KOHN ARCHITECTS INC. THE DRAWINGS AND THE INFORMATION CONTAINED THEREIN MAY NOT BE REPRODUCED IN WHOLE OR IN PART WITHOUT PRIOR WRITTEN PERMISSION OF THE KOHN ARCHITECTS INC.

ALL DRAWINGS ARE THE PROPERTY OF THE ARCHITECT AND MUST BE RETURNED ON REQUEST.

ISSUE DATES AND DISTRIBUTION LOG

No.	Date	Note
1	12/10/21	ISSUED FOR SPA
2	12/09/22	REISSUED FOR SPA

CITY PLAN NUMBER XXXX

CITY FILE NO. D07-12-21-0224



Project: **DECOEUR DRIVE**

MATTAMY HOMES
2370 TENTH LINE

OTTAWA ONTARIO

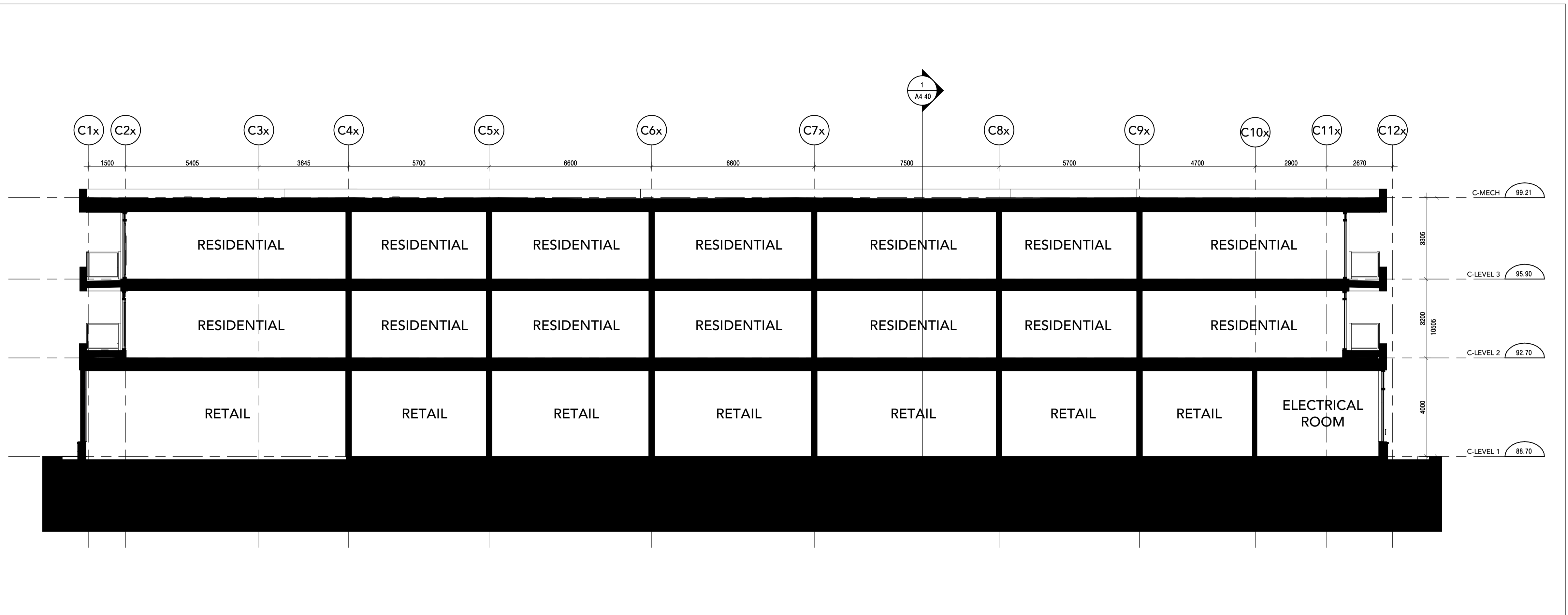
Drawing Title: **BLOCK C SECTIONS**

Project Manager Team: KB Project No. 21-107

Date Plotted: 2022-12-09 4:32:02 PM Scale: 1 : 100

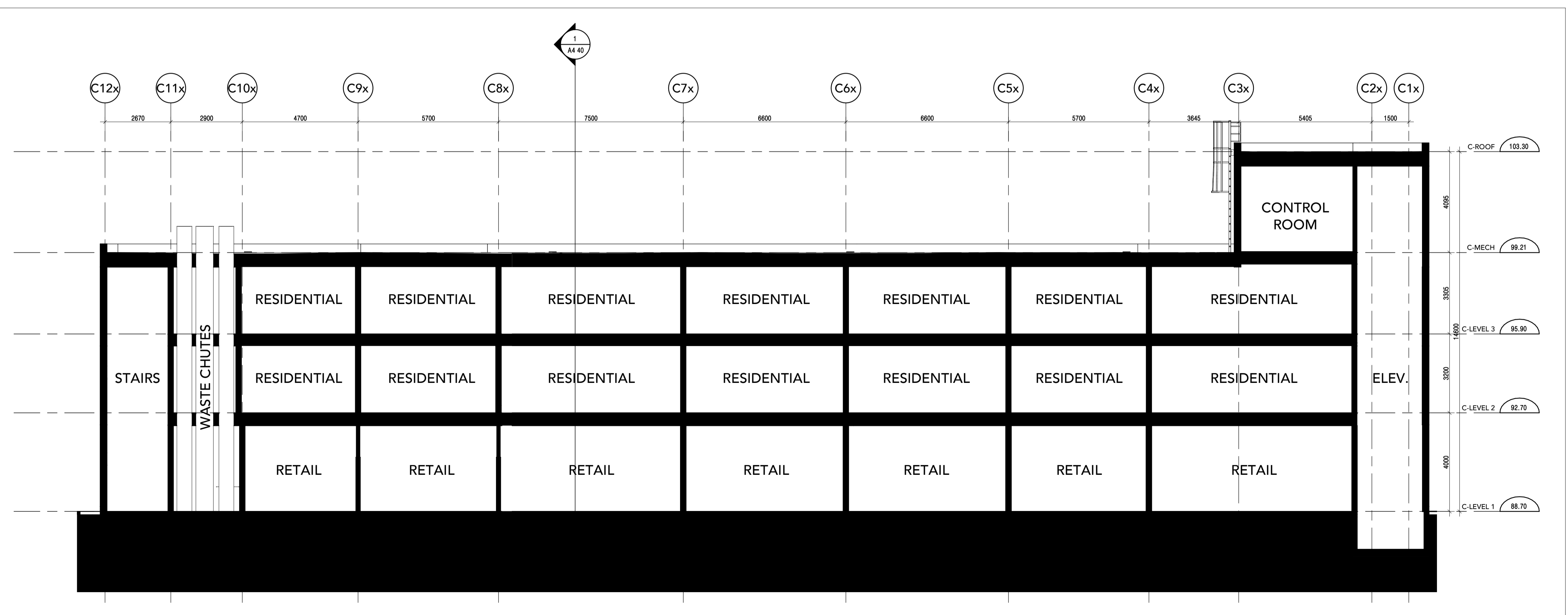
Building No.: Drawing No.:

C A4 30



BLOCK C NS SECTION 1
SCALE: 1 : 100

1
A4 30



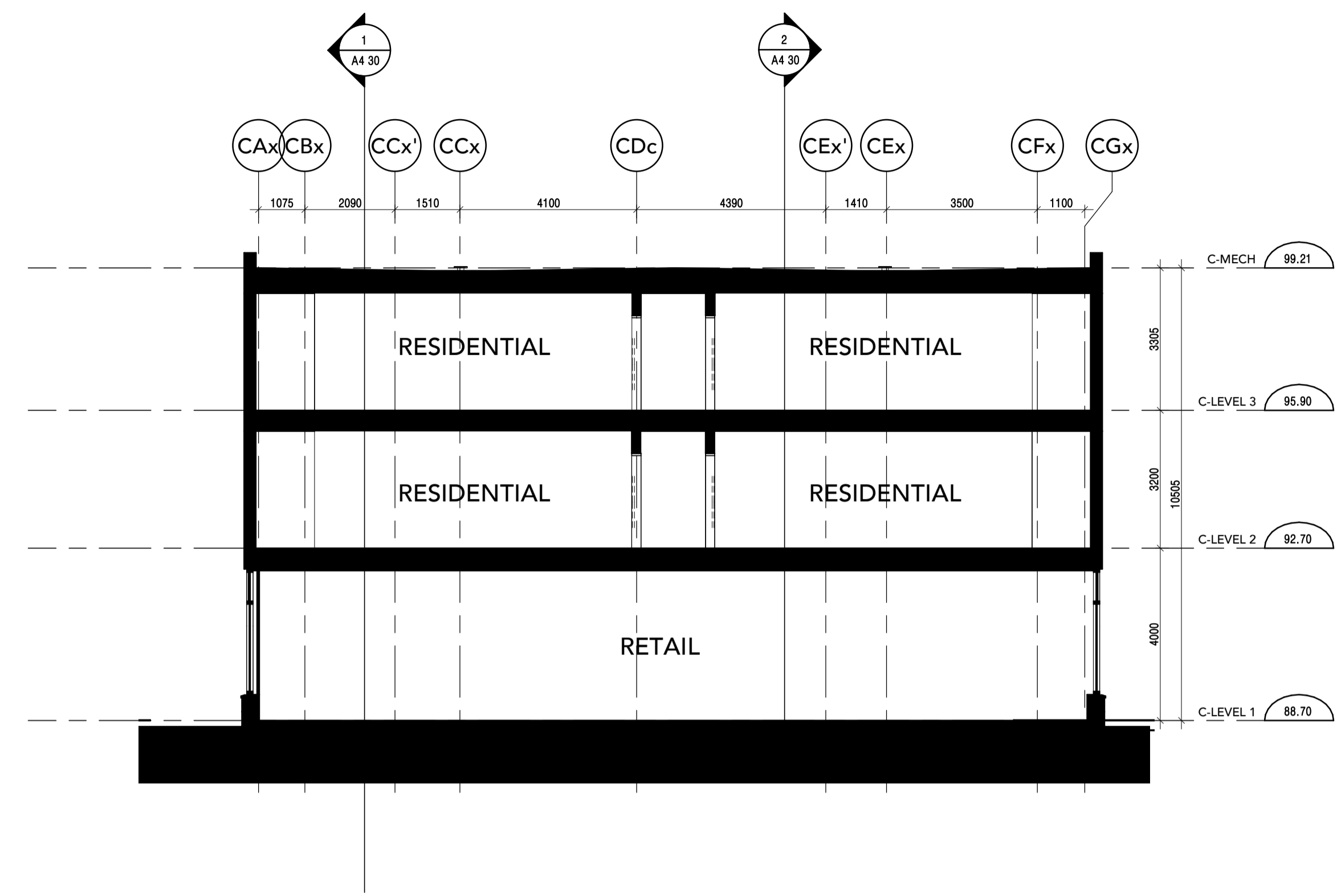
BLOCK C NS SECTION 2
SCALE: 1 : 100

2
A4 30

ALL DIMENSIONS ARE GIVEN IN MILLIMETRES UNLESS OTHERWISE INDICATED.
DO NOT SCALE DRAWINGS.
CONTRACTOR SHALL VERIFY AND CHECK ALL DIMENSIONS AND CONDITIONS ON SITE PRIOR TO STARTING ANY OF THE WORK AND REPORT ANY DISCREPANCY TO THE ARCHITECT AND CONSULTANTS BEFORE PROCEEDING. CONSTRUCTION MUST CONFORM TO ALL APPLICABLE CODES AND REQUIREMENTS OF AUTHORITIES HAVING JURISDICTION PERTAINING TO THIS APPLICATION.
THE ARCHITECT BEARS NO RESPONSIBILITY FOR THE INTERPRETATION OF THESE DOCUMENTS BY THE CONTRACTOR. UPON WRITTEN APPLICATION THE ARCHITECT WILL PROVIDE WRITTEN OR GRAPHIC CLARIFICATION AS SUPPLEMENTARY INFORMATION REGARDING THE INTENT OF THE CONTRACT DOCUMENTS.
LOCATIONS OF EXPOSED MECHANICAL OR ELECTRICAL DEVICES, FITTINGS AND FIXTURES ARE INDICATED ON ARCHITECTURAL DRAWINGS, WHICH SHALL GOVERN OVER THE MECHANICAL AND ELECTRICAL DRAWINGS. THOSE ITEMS NOT CLEARLY LOCATED, TO BE LOCATED AS DIRECTED BY THE ARCHITECT.
NO INVESTIGATION HAS BEEN UNDERTAKEN OR REPORTED ON THIS OFFICE IN REGARDS TO THE ENVIRONMENTAL CONDITIONS OR POLLUTIONS OF THIS SITE.
COPYRIGHT 2006 KOHN ARCHITECTS INC.

COPYRIGHT OF THIS DRAWING AND THE DESIGN INTENT IS RESERVED BY THE ARCHITECT. THE DRAWINGS AND ALL ASSOCIATED DOCUMENTS ARE AN INSTRUMENT OF SERVICE BY KOHN ARCHITECTS INC. THE DRAWINGS AND THE INFORMATION CONTAINED THEREIN MAY NOT BE REPRODUCED IN WHOLE OR IN PART WITHOUT PRIOR WRITTEN PERMISSION OF THE KOHN ARCHITECTS INC.
ALL DRAWINGS ARE THE PROPERTY OF THE ARCHITECT AND MUST BE RETURNED ON REQUEST.

ISSUE DATES AND DISTRIBUTION LOG		
No.	Date	Note
1	12/10/21	ISSUED FOR SPA
2	12/09/22	REISSUED FOR SPA



BLOCK C EW SECTION 1
SCALE: 1 : 100 A4 40

CITY PLAN NUMBER XXXX
CITY FILE NO. D07-12-21-0224



Project:
DECOEUR DRIVE
MATTAMY HOMES
2370 TENTH LINE
OTTAWA ONTARIO

Drawing Title:
BLOCK C SECTIONS

Project Manager Team: KB Project No: 21-107
Date Plotted: 2022-12-09 4:32:02 PM Scale: 1 : 100
Building No.: Drawing No.:

C A4 40