

# MATTAMY HOMES DECOEUR DRIVE 2370 TENTH LINE ROAD

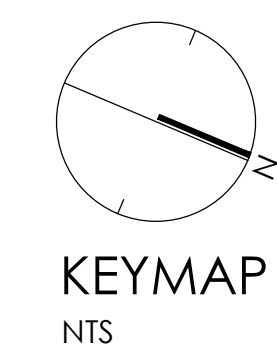


### LIST OF DRAWINGS:

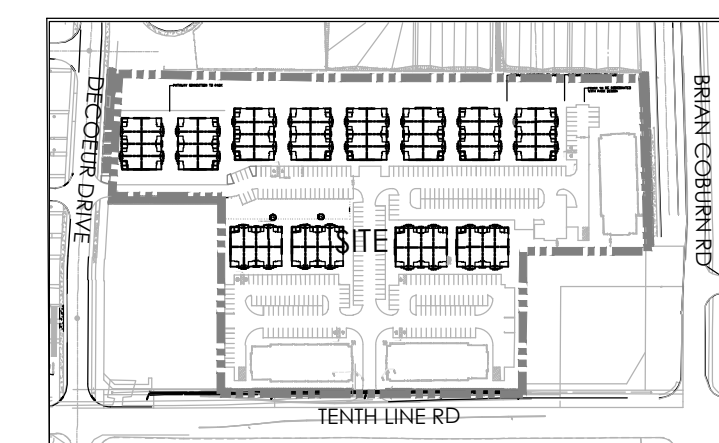
- L1 - LANDSCAPE PLAN
- L2 - LANDSCAPE PLAN
- L3 - LANDSCAPE PLAN
- L4 - LANDSCAPE PLAN
- D1 - DETAILS
- D2 - DETAILS
- D3 - DETAILS

#### TREE PLANTING IN MARINE CLAY SOILS

1. THIS LANDSCAPE PLAN CONFORMS WITH THE TREE-TO-FOUNDATION SETBACK, SOIL VOLUME, AND SURFACE-GRADING REQUIREMENTS OUTLINED IN THE CITY OF OTTAWA'S GUIDELINES FOR TREE PLANTING IN SENSITIVE MARINE CLAY SOILS (2017), BASED ON THE FINDINGS OUTLINED IN THE PROJECT GEOTECHNICAL REPORT.
2. ADDITIONAL REQUIREMENTS OUTLINED IN THE CITY OF OTTAWA'S GUIDELINES FOR TREE PLANTING IN SENSITIVE MARINE CLAY SOILS (2017), INCLUDING USF DEPTH, FOUNDATION WALL REINFORCEMENT, AND SUBDIVISION GRADING, SHOULD BE CONFIRMED BY THE PROJECT ENGINEER(S).
3. THE CONTRACTOR SHOULD REPORT ANY DISCREPANCIES TO THE CONTRACT ADMINISTRATOR BEFORE PLANTING TREES.
4. CITY OF OTTAWA - GUIDELINES FOR TREE PLANTING IN SENSITIVE MARINE CLAY SOILS (2017): THE FOLLOWING GUIDELINES ARE PRIMARILY FOCUSED ON SMALL AND MEDIUM SIZE STREET TREES. HOWEVER, LARGE TREES (MATURE HEIGHT COVER 14M) CAN STILL BE PLANTED IN AREAS OF SMC SOILS PROVIDED A TREE TO FOUNDATION SETBACK EQUAL TO THE FULL MATURE HEIGHT OF THE TREE CAN BE PROVIDED (E.G. IN A PARK OR OTHER GREEN SPACE). FOR STREET TREES IN THE ROAD RIGHT-OF-WAY WHERE SMC SOILS HAVE BEEN IDENTIFIED, THE TREE TO FOUNDATION SETBACKS MAY BE REDUCED TO 4.5M FOR SMALL (MATURE TREE HEIGHT UP TO 7.5M) AND MEDIUM SIZE TREES (MATURE TREE HEIGHT 7.5M-14M) PROVIDED ALL OF THE FOLLOWING SIX CONDITIONS ARE MET:
  1. THE MODIFIED PLASTICITY INDEX OF THE SOIL BETWEEN THE UNDERSIDE OF FOOTING (USF) AND A DEPTH OF 3.5M GENERALLY DOES NOT EXCEED 40%. THIS CORRESPONDS TO SOILS WITH LOW/MEDIUM POTENTIAL FOR SOIL VOLUME CHANGE. CLAY SOILS THAT EXCEED THE 40% PLASTICITY INDEX ARE CONSIDERED TO HAVE HIGH POTENTIAL FOR SOIL VOLUME CHANGE. FOR THESE WORST-CASE SOILS, THE SETBACKS AND TREE PLANTING RESTRICTIONS REMAIN UNCHANGED FROM THE 2005 CLAY SOILS POLICY (TREE SETBACK MUST EQUAL THE MATURE HEIGHT OF THE TREE - I.E. 7.5M SETBACK FOR SMALL TREES).
  2. THE USF IS 2.1M OR GREATER BELOW THE LOWEST FINISHED GRADE. NOTE: THIS FOOTING LEVEL MUST BE SATISFIED FOR FOOTINGS WITHIN 10M OF THE TREE, AS MEASURED FROM THE CENTRE OF THE TREE TRUNK, AND VERIFIED BY MEANS OF THE GRADING PLAN AS INDICATED IN THE PROCEDURAL CHANGES BELOW.
  3. A SMALL SIZE TREE MUST BE PROVIDED WITH A MINIMUM OF 25M<sup>3</sup> OF AVAILABLE SOIL VOLUME, AS DETERMINED BY A LANDSCAPE ARCHITECT. A MEDIUM SIZE TREE MUST BE PROVIDED WITH A MINIMUM OF 30M<sup>3</sup> OF AVAILABLE SOIL VOLUME, AS DETERMINED BY A LANDSCAPE ARCHITECT. THE DEVELOPER WILL ENSURE THE SOIL IS GENERALLY UNCOMPACTED WHEN BACKFILLING IN STREET TREE PLANTING LOCATIONS.  
NOTE: THE SOIL VOLUME CALCULATION MUST BE BASED ON A DEPTH OF 1.5M BELOW FINISHED GRADE (E.G. 5M LENGTH X 4M WIDTH AT SURFACE X 1.5M DEPTH = 30M<sup>3</sup>). IT MAY INCLUDE LANDS IN THE RIGHT-OF-WAY AND ON PRIVATE PROPERTY, BUT MUST SUBTRACT THE VOLUME OF SHALLOW UTILITY TRENCHES (I.E. VOLUME OF SHALLOW UTILITY TRENCHES CANNOT COUNT TOWARDS MINIMUM SOIL VOLUME).
  4. THE TREE SPECIES MUST BE SMALL TO MEDIUM SIZE, AS CONFIRMED BY A LANDSCAPE ARCHITECT IN THE LANDSCAPE PLAN.
  5. THE FOUNDATION WALLS ARE TO BE REINFORCED AT LEAST NOMINALLY (MINIMUM OF TWO UPPER AND TWO LOWER 15M BARS IN THE FOUNDATION WALL) TO PROVIDE DUCTILITY AS DESCRIBED IN THE GEOTECHNICAL REPORT.
  6. GRADING SURROUNDING THE TREE MUST PROMOTE DRAINING TO THE TREE ROOT ZONE (IN SUCH A MANNER AS NOT TO BE DETRIMENTAL TO THE TREE), AS NOTED ON THE SUBDIVISION GRADING PLAN.



Contractor shall check all dimensions on the work and report any discrepancy to the Landscape Architect before proceeding. All drawings and specifications are the property of the Landscape Architect and must be returned at the completion of the work. This drawing is not to be used for construction until signed by the Landscape Architect.



LEGEND

- PROPERTY LINE
- FENCING
  - 2.0m WASTE ENCLOSURE FENCE
- PLANTING
  - POST & RAIL FENCE
  - LARGE DECIDUOUS TREE
  - MEDIUM DECIDUOUS TREE
  - SMALL DECIDUOUS TREE
  - TREEFORM SHRUBS
  - CONIFEROUS TREE
  - DECIDUOUS SHRUB
  - CONIFEROUS SHRUB
  - GRASSES/PERENNIALS
  - SOD
  - MEADOW PLANTING
- SURFACING
  - UNIT PAVING WALKWAYS
  - UNIT PAVING ENTRANCES
  - ASPHALT PAVING WITH UNIT PAVER BORDER
  - HEAVY DUTY CONCRETE PAVING
  - STONEDUST PAVING
- UTILITIES
  - PROPOSED HYDRO TRANSFORMER
  - PROPOSED CABLE PEDESTAL
  - PROPOSED BELL PEDESTAL
  - CURB STOP
  - PROPOSED BELL CABINET
  - PROPOSED STREET LIGHT
  - FIRE HYDRANT
  - EXISTING HYDRO POLE

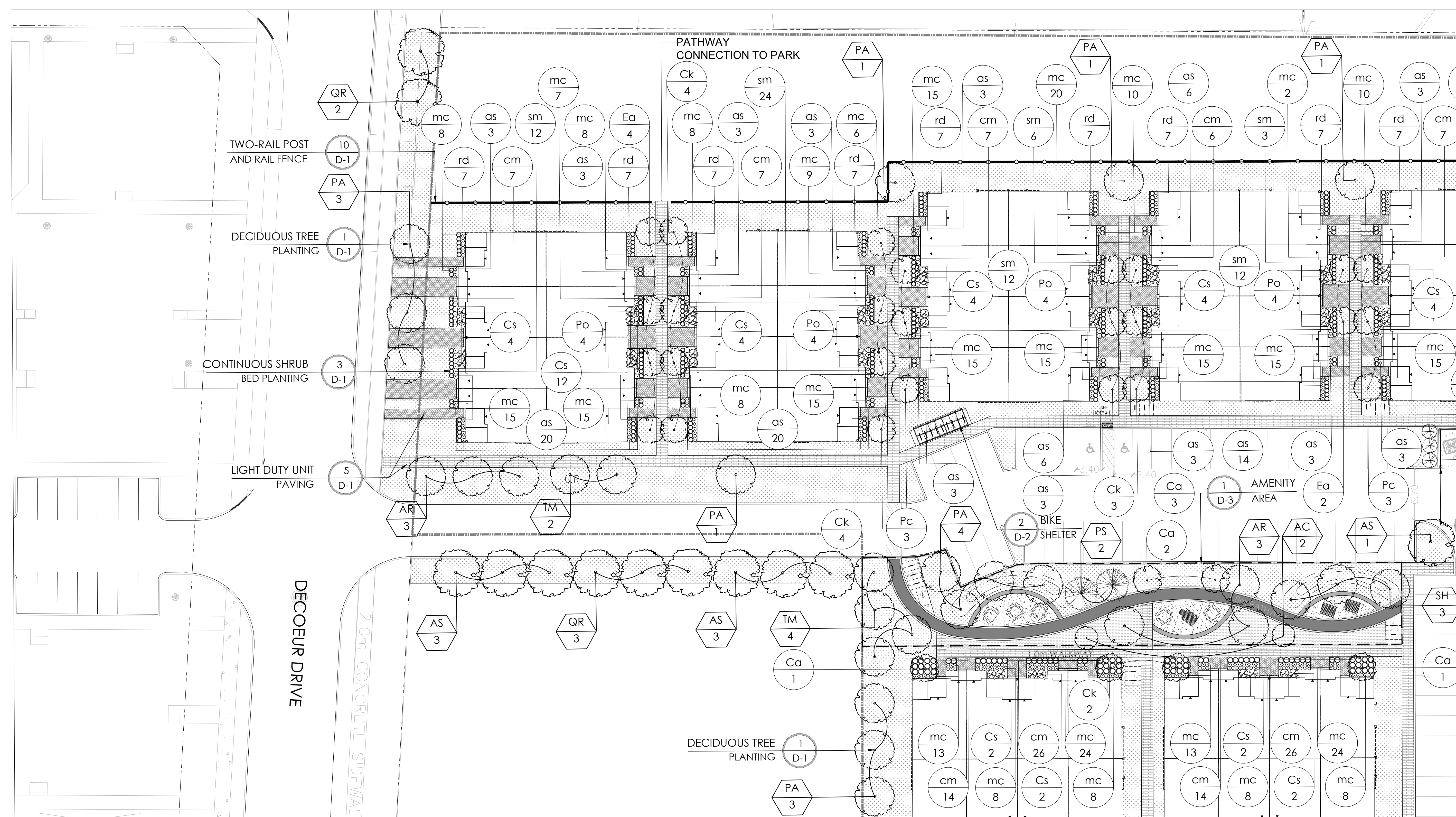
No.	Description	Date
6	Issued for second submission	Dec. 09/22
5	Issued for coordination	Dec. 07/22
4	Issued Amenity Space for Client Review	Oct.25/22
3	Issued for client review	Aug. 24/22
2	Re-issued for First Submission	Dec. 21/21
1	Issued for First Submission	Dec. 10/21



**NAK** design strategies  
 1285 WELLINGTON STREET, OTTAWA, ON K1Y 3A8 CANADA  
 T 613.237.2345 F 613.237.4423 NAKDESIGNSTRATEGIES.COM

MATTAMY HOMES  
 DECOEUR DRIVE  
 2370 TENTH LINE ROAD

Title: LANDSCAPE PLAN  
 Date: DEC 2022 Sheet: L1  
 Scale: 1:250  
 Drawn: SH  
 Checked: JSC  
 Job No.: 21-145



- GENERAL NOTES:**
- ACER RUBRUM AND QUERCUS RUBRA TO BE SPRING DUG SPECIMENS AND PLANTED IN THE SPRING ONLY.
  - THE LOCATION OF THE TREES SHOWN ON THIS PLAN IS APPROXIMATE AND SHALL NOT BE SCALED FROM THIS DRAWING. THIS PLAN MUST BE READ IN CONJUNCTION WITH THE APPROVED CUP AND CITY CROSS SECTIONS.
  - CONTRACTOR SHALL ENSURE THAT ALL UTILITY LOCATIONS ARE OBTAINED PRIOR TO ANY EXCAVATION FOR LANDSCAPING.
  - LOCATION OF ALL TREES TO BE STAKED BY THE CONTRACTOR AND VERIFIED IN THE FIELD BY LANDSCAPE ARCHITECT & CITY OF OTTAWA PRIOR TO THE EXCAVATION OF PITS.
  - ALL PLANT MATERIAL SHALL BE NURSERY GROWN STOCK UNLESS OTHERWISE NOTED.
  - TREES TO HAVE A MINIMUM 1800 CLEAR STEM ABOVE GRADE.
  - PLACE SOD ON A MINIMUM 150mm TOPSOIL.
  - CONTRACTOR TO MAKE GOOD ALL EXISTING AREAS DAMAGED BY HIS WORK TO THE SATISFACTION OF THE CITY OF OTTAWA.
  - THE CITY WILL BE NOTIFIED IF ANY TREES CANNOT BE LOCATED OR PLANTED DUE TO CONFLICTS WITH UTILITIES OR DRIVEWAYS. THE REQUIRED TREES NOT PLANTED ARE SUBJECT TO TREE BANKING. THE FINAL NUMBER OF TREES TO BE BANKED WILL BE PROVIDED TO THE CITY FOLLOWING ALL PLANTINGS.
  - ALL PLANT MATERIAL SHALL BE WARRANTIED FOR TWO YEARS FROM THE DATE OF PERFORMANCE ACCEPTANCE AS DETERMINED BY THE CITY OF OTTAWA.
  - PERIODIC REVIEWS OF PLANTING SHALL BE CARRIED OUT BY THE LANDSCAPE ARCHITECT.
  - PLANTINGS TO BE STAKED FOR APPROVAL PRIOR TO CONSTRUCTION
  - CITY GRASS CUTTING RESPONSIBILITIES FOR SODDED AREAS SHALL BEGIN FOLLOWING PERFORMANCE ACCEPTANCE INSPECTION BY THE LANDSCAPE ARCHITECT AND THE CITY. ACCEPTANCE WILL BE PROVIDED ONLY IF:
    - SOD IS PROPERLY ESTABLISHED.
    - TURF IS FREE OF DEAD SPOTS AND WEEDS.
    - SODDED AREAS HAVE BEEN CLIT WITHIN 24 HOURS PRIOR TO ACCEPTANCE INSPECTION.
    - MINIMUM OF 3 WEEKS HAVE ELAPSED FOLLOWING LAYING OF SOD.
    - A MINIMUM OF TWO CUTS HAVE TAKEN PLACE.
    - SODDED AREAS HAVE BEEN TOP-DRESSED, SEEDED AND AERATED

**PLANT LIST**

KEY	QTY	BOTANICAL NAME	COMMON NAME	CAL.HGT. (mm)	ROOT	MATURE HEIGHT	MATURE SPREAD
<b>LARGE DECIDUOUS TREES</b>							
AS	11	ACER SACCHARUM	SUGAR MAPLE	60	B&B	25m	18m
QR	12	QUERCUS RUBRA	RED OAK	60	B&B	24m	18m
<b>MEDIUM DECIDUOUS TREES</b>							
AR	21	ACER RUBRUM 'AUTUMN FLAME'	AUTUMN FLAME RED MAPLE	60	B&B	13m	13m
PA	20	PYRUS CALLERYANA 'CAPITAL'	CAPITAL PEAR	60	B&B	11m	4m
QR	10	QUERCUS ROBUR 'FASCIATA'	PYRAMIDAL ENGLISH OAK	60	B&B	14m	5m
SH	13	SORBUS X HYBRIDA	MOUNTAIN-ASH	60	B&B	14m	6m
TM	13	TILIA MONGOLICA	MONGOLIAN LINDEN	60	B&B	14m	10m
<b>SMALL DECIDUOUS TREES</b>							
AC	2	AMELANCHIER CANADENSIS	SERVICEBERRY	60	B&B	7m	4m
<b>TREEFORM SHRUBS</b>							
Co	21	CORNUS ALTERNIFOLIA	PAGODA DOGWOOD	40	B&B	5m	
Ck	22	CORNUS KOUSA 'SATOMI'	SATOMI FLOWERING DOGWOOD	175cm	TREEFORM	5m	
Ea	10	EUONYMUS ALATUS 'COMPACTUS'	DWARF BURNING BUSH	150cm	TREEFORM	3m	
Pc	12	PRUNUS X CISTENA	PURPLE-LEAF SAND CHERRY	175cm	TREEFORM	3m	
<b>CONIFEROUS TREES</b>							
FP	3	PICEA PUNGENS 'AVATAR'	AVATAR BLUE SPRUCE	500cm	B&B		
PS	5	PINUS STROBUS	WHITE PINE	500cm	B&B		
<b>DECIDUOUS SHRUBS</b>							
Ci	35	CORNUS SERICEA 'FARROW'	ARCTIC FIRE DOGWOOD	175cm	3 GAL.		
Ef	3	EUONYMUS ALATUS 'FIREBALL'	FIREBALL BURNING BUSH	175cm	3 GAL.		
Po	24	PHYSCARPUS OPULOFOLIUS 'DIABOLO'	DIABOLO NINEBARK	175cm	3 GAL.		
Pv	3	PHILADELPHUS X VIRGINIALIS	MOCK ORANGE	175cm	3 GAL.		
<b>CONIFEROUS SHRUBS</b>							
Jc	65	JUNIPERUS CHINENSIS 'FAIRVIEW'	FAIRVIEW JUNIPER	275cm	3 GAL.		
Jc	6	JUNIPERUS CHINENSIS 'MINT JULEP'	MINT JULEP JUNIPER	125cm	3 GAL.		

**GRASSES**

cm	224	CAREX MORROWII 'ICE DANCE'	ICE DANCE SEDGE	30cm	1 GAL.
dc	87	DESCHAMPSIA CESPITOSA	TUFFED HAIR GRASS	100cm	1 GAL.
mc	533	MOLINIA CAERULEA 'VARIEGATA'	VARIEGATED PURPLE MOOR GRASS	70cm	1 GAL.
	846				

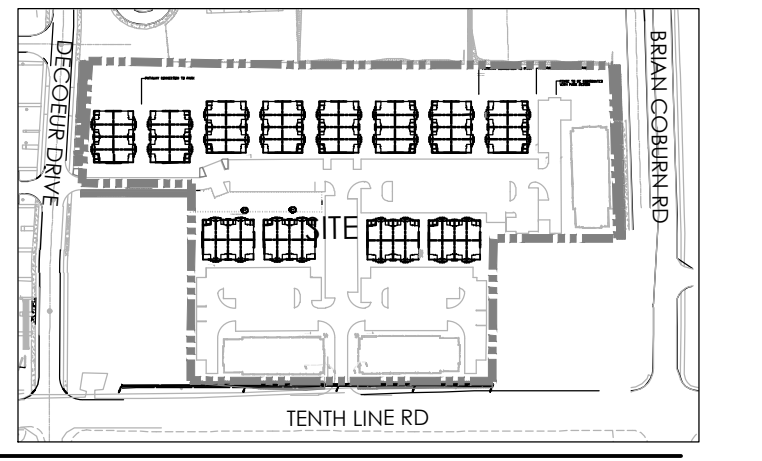
**PERENNIALS**

am	61	ALLIUM X 'MILLENIUM'	ORNAMENTAL ONION	50cm	1 GAL.
as	185	ASTER NOVAE-ANGLIAE 'PURPLE DOME'	NEW ENGLAND ASTER	50cm	1 GAL.
rd	161	RUBECKIA HIRTA	BLACK-EYED SUSAN	60cm	1 GAL.
ho	99	HOSTA 'AUGUST MOON'	AUGUST MOON HOSTA	45cm	1 GAL.
hs	38	HOSTA 'HOSTA SILVER BAY'	SILVER BAY HOSTA	40cm	1 GAL.
hg	126	HOSTA 'GREAT ARRIVAL'	GREAT ARRIVAL	45cm	1 GAL.
sm	161	SEDUM 'MAESTRO'	MAESTRO STONECROP	60cm	1 GAL.
	831				

**ESTIMATED CANOPY COVERAGE MATURITY**

TYPE OF TREE	AVERAGE MATURE SPREAD	AVERAGE MATURE CANOPY	QUANTITY OF TREES	CANOPY AREA*
DECIDUOUS	9.9 m	76.9 m <sup>2</sup>	152	11,688.8 m <sup>2</sup>
CONIFEROUS	7.3 m	41.8 m <sup>2</sup>	20	836 m <sup>2</sup>
TOTAL CANOPY COVERAGE:				<b>12,524.8 m<sup>2</sup></b>
TOTAL SITE AREA:				36,378 m <sup>2</sup>
EST. CANOPY COVERAGE:				<b>34%</b>

Contractor shall check all dimensions on the work and report any discrepancy to the Landscape Architect before proceeding. All drawings and specifications are the property of the Landscape Architect and must be returned at the completion of the work. This drawing is not to be used for construction until signed by the Landscape Architect.



**LEGEND**

**FENCING**

- PROPERTY LINE
- 2.0m WASTE ENCLOSURE FENCE
- POST & RAIL FENCE

**PLANTING**

- LARGE DECIDUOUS TREE
- MEDIUM DECIDUOUS TREE
- SMALL DECIDUOUS TREE
- TREEFORM SHRUBS
- CONIFEROUS TREE
- DECIDUOUS SHRUB
- CONIFEROUS SHRUB
- GRASSES/PERENNIALS
- SOD
- MEADOW PLANTING

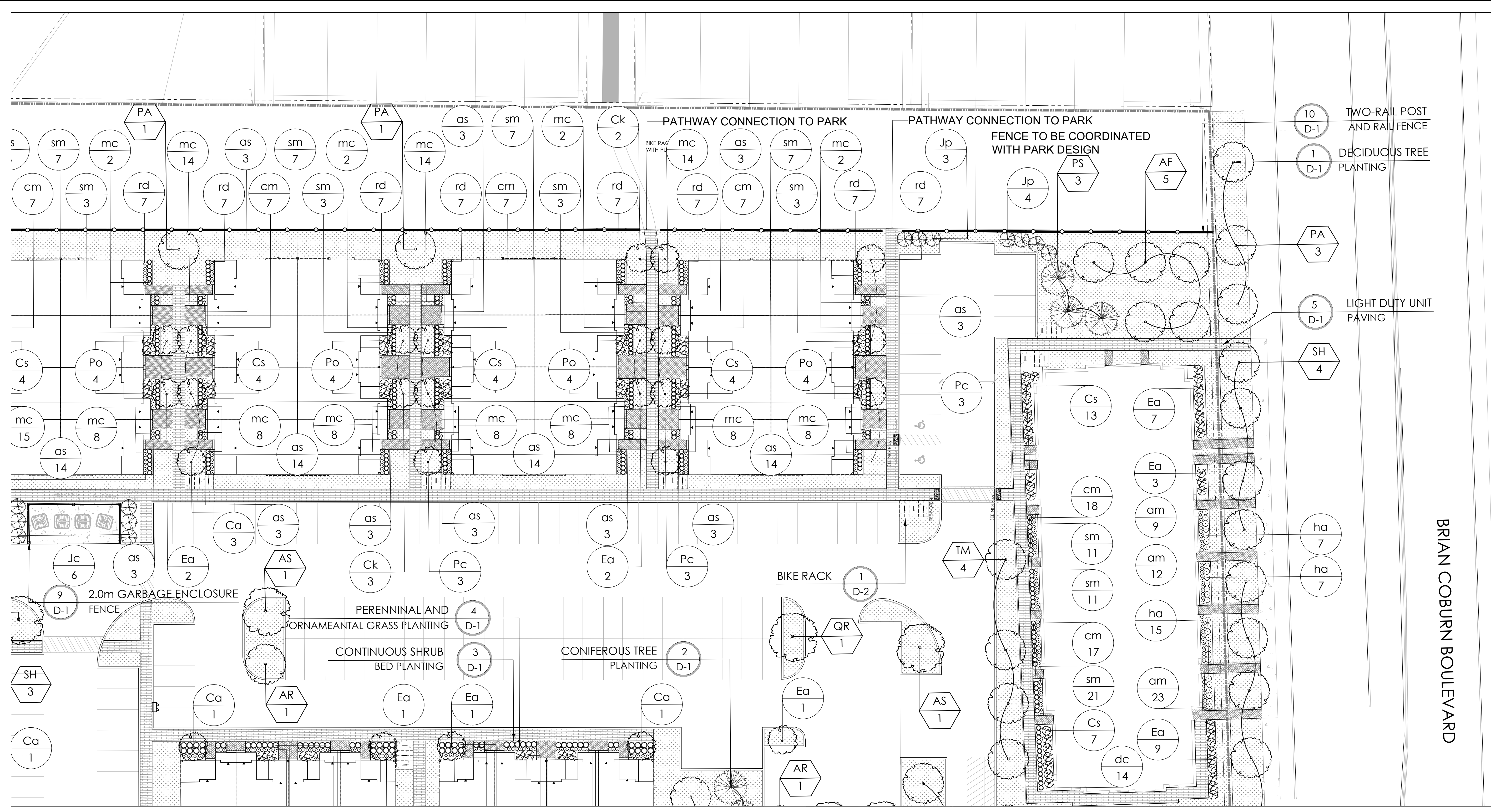
**SURFACING**

- UNIT PAVING WALKWAYS
- UNIT PAVING ENTRANCES
- ASPHALT PAVING WITH UNIT PAVER BORDER
- HEAVY DUTY CONCRETE PAVING
- STONEDUST PAVING

**UTILITIES**

- PROPOSED HYDRO TRANSFORMER
- PROPOSED CABLE PEDESTAL
- PROPOSED BELL PEDESTAL
- CURB STOP
- PROPOSED BELL CABINET
- PROPOSED STREET LIGHT
- FIRE HYDRANT
- EXISTING HYDRO POLE

No.	Description	Date
6	Issued for second submission	Dec. 09/22
5	Issued for coordination	Dec. 07/22
4	Issued Amenity Space for Client Review	Oct.25/22
3	Issued for client review	Aug. 24/22
2	Re-issued for First Submission	Dec.21/21
1	Issued for First Submission	Dec.10/21
No.	Description	Date



- GENERAL NOTES:**
- ACER RUBRUM AND QUERCUS RUBRA TO BE SPRUNG DUG SPECIMENS AND PLANTED IN THE SPRING ONLY.
  - THE LOCATION OF ALL TREES SHOWN ON THIS PLAN IS APPROXIMATE AND SHALL NOT BE SCALED FROM THIS DRAWING. THIS PLAN MUST BE READ IN CONJUNCTION WITH THE APPROVED CUP AND CITY CROSS SECTIONS.
  - CONTRACTOR SHALL ENSURE THAT ALL UTILITY LOCATIONS ARE OBTAINED PRIOR TO ANY EXCAVATION FOR LANDSCAPING.
  - LOCATION OF ALL TREES TO BE STAKED BY THE CONTRACTOR AND VERIFIED IN THE FIELD BY LANDSCAPE ARCHITECT & CITY OF OTTAWA PRIOR TO THE EXCAVATION OF PITS.
  - ALL PLANT MATERIAL SHALL BE NURSERY GROWN STOCK UNLESS OTHERWISE NOTED.
  - TREES TO HAVE A MINIMUM 1800 CLEAR STEM ABOVE GRADE.
  - PLACE SOD ON A MINIMUM 150mm TOPSOIL.
  - CONTRACTOR TO MAKE GOOD ALL EXISTING AREAS DAMAGED BY HIS WORK TO THE SATISFACTION OF THE CITY OF OTTAWA.
  - THE CITY WILL BE NOTIFIED IF ANY TREES CANNOT BE LOCATED OR PLANTED DUE TO CONFLICTS WITH UTILITIES OR DRIVEWAYS. THE REQUIRED TREES NOT PLANTED ARE SUBJECT TO TREE BANKING. THE FINAL NUMBER OF TREES TO BE BANKED WILL BE PROVIDED TO THE CITY FOLLOWING ALL PLANTINGS.
  - ALL PLANT MATERIAL SHALL BE WARRANTED FOR TWO YEARS FROM THE DATE OF PERFORMANCE ACCEPTANCE AS DETERMINED BY THE CITY OF OTTAWA.
  - PERIODIC REVIEWS OF PLANTING SHALL BE CARRIED OUT BY THE LANDSCAPE ARCHITECT.
  - PLANTINGS TO BE STAKED FOR APPROVAL PRIOR TO CONSTRUCTION
  - CITY GRASS CUTTING RESPONSIBILITIES FOR SODDED AREAS SHALL BEGIN FOLLOWING PERFORMANCE ACCEPTANCE INSPECTION BY THE LANDSCAPE ARCHITECT AND THE CITY. ACCEPTANCE WILL BE PROVIDED ONLY IF:
    - SOD IS PROPERLY ESTABLISHED.
    - TURF IS FREE OF DEAD SPOTS AND WEEDS.
    - SODDED AREAS HAVE BEEN CLIT WITHIN 24 HOURS PRIOR TO ACCEPTANCE INSPECTION.
    - MINIMUM OF 3 WEEKS HAVE ELAPSED FOLLOWING LAYING OF SOD.
    - A MINIMUM OF TWO CUTS HAVE TAKEN PLACE.
    - SODDED AREAS HAVE BEEN TOP-DRESSED, SEEDED AND AERATED

**PLANT LIST**

KEY	QTY	BOTANICAL NAME	COMMON NAME	CAL.HGT. (mm)	ROOT	MATURE HEIGHT	MATURE SPREAD
<b>LARGE DECIDUOUS TREES</b>							
AS	11	ACER SACCHARUM	SUGAR MAPLE	60	B&B	25m	18m
QR	12	QUERCUS RUBRA	RED OAK	60	B&B	24m	18m
<b>MEDIUM DECIDUOUS TREES</b>							
AR	21	ACER RUBRUM 'AUTUMN FLAME'	AUTUMN FLAME RED MAPLE	60	B&B	13m	13m
PA	20	PYRUS CALLERYANA 'CAPITAL'	CAPITAL PEAR	60	B&B	11m	4m
QF	10	QUERCUS ROBUR 'ASTIGIATA'	PYRAMIDAL ENGLISH OAK	60	B&B	14m	5m
SH	13	SORBUS X HYBRIDA	MOUNTAIN-ASH	60	B&B	14m	6m
TM	13	TILIA MONGOLICA	MONGOLIAN LINDEN	60	B&B	14m	10m
<b>SMALL DECIDUOUS TREES</b>							
AC	2	AMELANCHIER CANADENSIS	SERVICEBERRY	60	B&B	7m	4m
<b>TREEFORM SHRUBS</b>							
CO	21	CORNUS ALTERNIFOLIA	PAGODA DOGWOOD	40	B&B	5m	
CK	22	CORNUS KOJUSA 'SATOMI'	SATOMI FLOWERING DOGWOOD	175cm	TREEFORM	3m	
Ea	10	EUONYMUS ALATUS 'COMPACTUS'	DWARF BURNING BUSH	150cm	TREEFORM	3m	
Pc	12	PRUNUS X CISTENA	PURPLE-LEAF SAND CHERRY	175cm	TREEFORM	3m	
<b>CONIFEROUS TREES</b>							
PP	3	PICEA PUNGENS 'AVATAR'	AVATAR BLUE SPRUCE	500cm	B&B		
PS	5	PINUS STROBUS	WHITE PINE	500cm	B&B		
<b>DECIDUOUS SHRUBS</b>							
CS	35	CORNUS SERICEA 'FARROW'	ARCTIC FIRE DOGWOOD	175cm	3 GAL.		
EF	3	EUONYMUS ALATUS 'FIREBALL'	FIREBALL BURNING BUSH	175cm	3 GAL.		
Po	24	PHYSCARPUS OPULOFOLIUS 'DIABOLO'	DIABOLO NINEBARK	175cm	3 GAL.		
Pv	3	PHILADELPHUS X VIRGINALIS	MOCK ORANGE	175cm	3 GAL.		
<b>CONIFEROUS SHRUBS</b>							
JJ	65	JUNIPERUS CHINENSIS 'FAIRVIEW'	FAIRVIEW JUNIPER	275cm	3 GAL.		
Jc	6	JUNIPERUS CHINENSIS 'MINT JULEP'	MINT JULEP JUNIPER	125cm	3 GAL.		

**GRASSES**

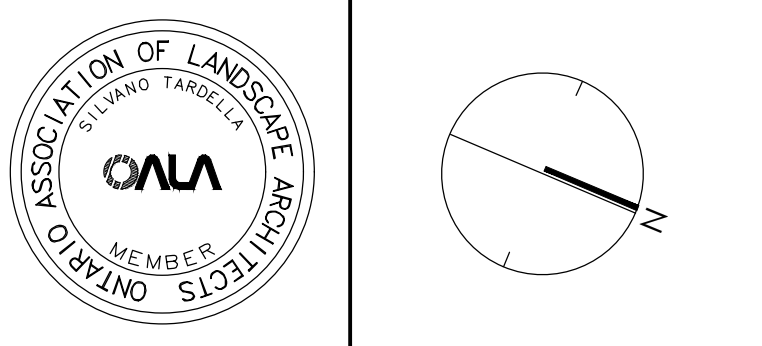
cm	226	CAREX MORROWII 'ICE DANCE'	ICE DANCE SEDGE	30cm	1 GAL.
dc	87	DESCHAMPSIA CESPIIOSA	TUFFED HAIR GRASS	100cm	1 GAL.
mc	533	MOLINIA CAERULEA 'VARIEGATA'	VARIEGATED PURPLE MOOR GRASS	70cm	1 GAL.
	846				

**PERENNIALS**

am	61	ALLIUM X 'MILLENIUM'	ORNAMENTAL ONION	50cm	1 GAL.
as	185	ASTER NOVAE-ANGLOEAE 'PURPLE DOME'	NEW ENGLAND ASTER	50cm	1 GAL.
rd	161	RUBECKIA HIRTA	BLACK-EYED SUSAN	60cm	1 GAL.
ha	99	HOSTA 'AUGUST MOON'	AUGUST MOON HOSTA	45cm	1 GAL.
hs	38	HOSTA 'HOSTA SILVER BAY'	SILVER BAY HOSTA	40cm	1 GAL.
hg	126	HOSTA 'GREAT ARRIVAL'	GREAT ARRIVAL	45cm	1 GAL.
sm	161	SEDUM 'MAESTRO'	MAESTRO STONECROP	60cm	1 GAL.
	831				

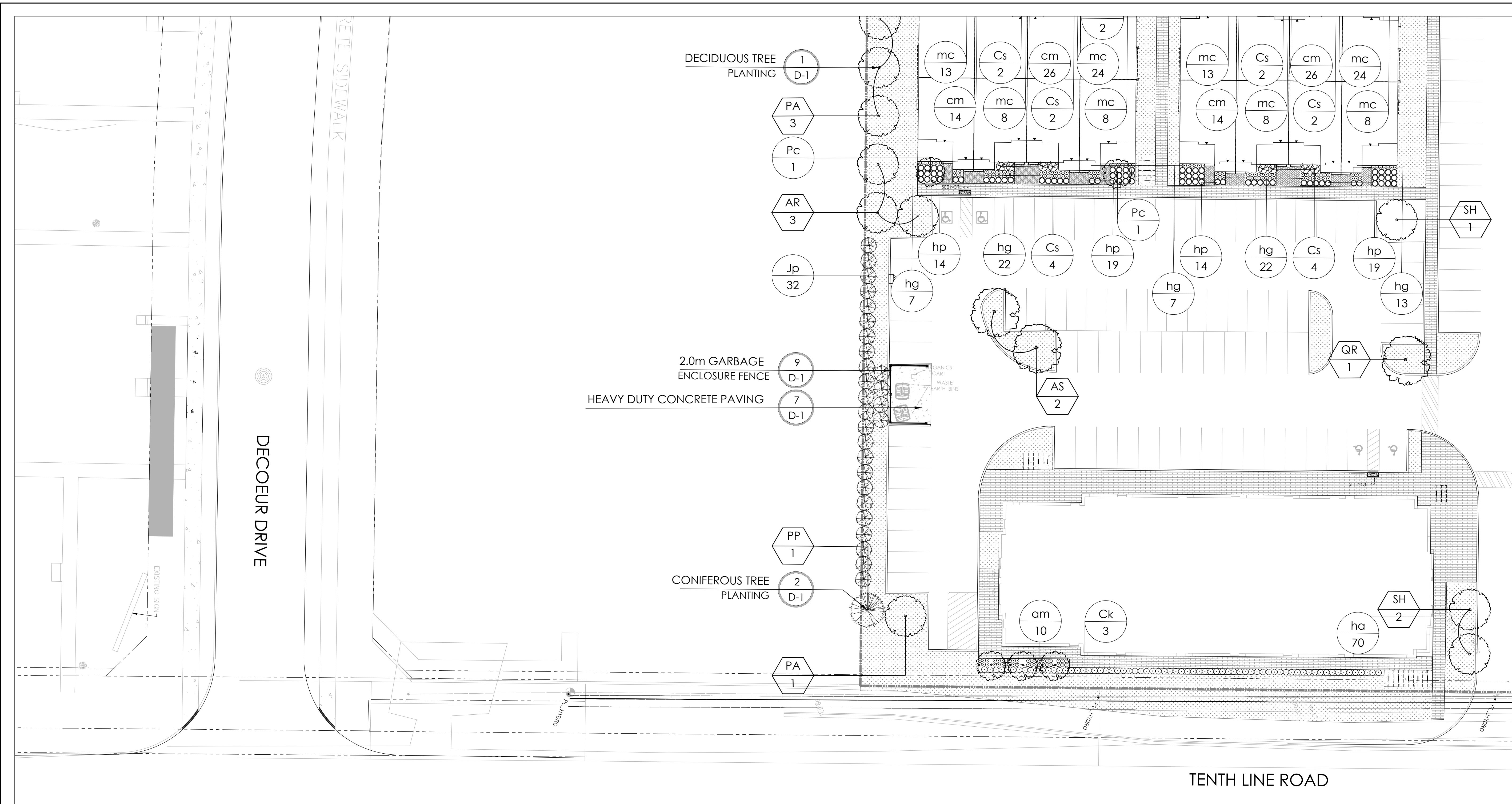
**ESTIMATED CANOPY COVERAGE MATURITY**

TYPE OF TREE	AVERAGE MATURE SPREAD	AVERAGE MATURE CANOPY	QUANTITY OF TREES	CANOPY AREA*
DECIDUOUS	9.9 m	76.9 m²	152	11,688.8 m²
CONIFEROUS	7.3 m	41.8 m²	20	836 m²
<b>TOTAL CANOPY COVERAGE :</b>				<b>12,524.8 m²</b>
<b>TOTAL SITE AREA:</b>				<b>36,378 m²</b>
<b>EST. CANOPY COVERAGE:</b>				<b>34%</b>

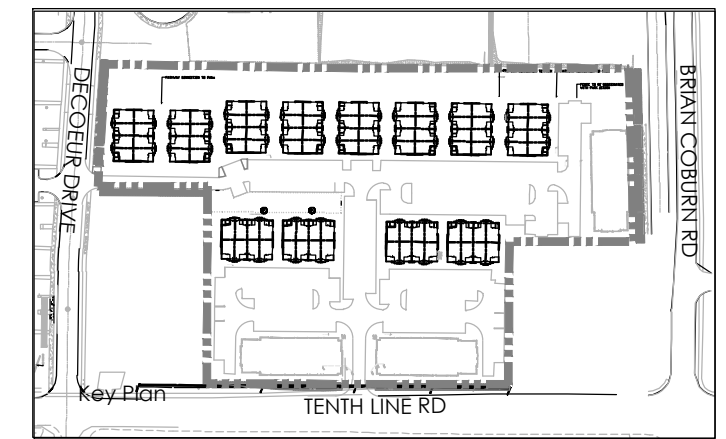


**NAK design strategies**  
 1285 WELLINGTON STREET, OTTAWA, ON K1T 3A8 CANADA  
 T 613.237.2345 F 613.237.4423 NAKDESIGNSTRATEGIES.COM

**MATTAMY HOMES DECOEUR DRIVE**  
 2370 TENTH LINE ROAD



Contractor shall check all dimensions on the work and report any discrepancy to the Landscape Architect before proceeding. All drawings and specifications are the property of the Landscape Architect and must be returned at the completion of the work. This drawing is not to be used for construction until signed by the Landscape Architect.



- LEGEND**
- PROPERTY LINE
  - FENCING
    - 2.0m WASTE ENCLOSURE FENCE
    - POST & RAIL FENCE
  - PLANTING
    - LARGE DECIDUOUS TREE
    - MEDIUM DECIDUOUS TREE
    - SMALL DECIDUOUS TREE
    - TREEFORM SHRUBS
    - CONIFEROUS TREE
    - DECIDUOUS SHRUB
    - CONIFEROUS SHRUB
    - GRASSES/PERENNIALS
    - SOD
    - MEADOW PLANTING
  - SURFACING
    - UNIT PAVING WALKWAYS
    - UNIT PAVING ENTRANCES
    - ASPHALT PAVING WITH UNIT PAVER BORDER
    - HEAVY DUTY CONCRETE PAVING
    - STONEDUST PAVING
  - UTILITIES
    - PROPOSED HYDRO TRANSFORMER
    - PROPOSED CABLE PEDESTAL
    - PROPOSED BELL PEDESTAL
    - CURB STOP
    - PROPOSED BELL CABINET
    - PROPOSED STREET LIGHT
    - FIRE HYDRANT
    - EXISTING HYDRO POLE

6	Issued for second submission	Dec. 09/22
5	Issued for coordination	Dec. 07/22
4	Issued Amenity Space for Client Review	Oct.25/22
3	Issued for client review	Aug. 24/22
2	Re-issued for First Submission	Dec.21/21
1	Issued for First Submission	Dec.10/21
No.	Description	Date
Revision		
City Approval Stamp		

- GENERAL NOTES:**
- ACER RUBRUM AND QUERCUS RUBRA TO BE SPRING DUG SPECIMENS AND PLANTED IN THE SPRING ONLY.
  - THE LOCATION OF THE TREES SHOWN ON THIS PLAN IS APPROXIMATE AND SHALL NOT BE SCALED FROM THIS DRAWING. THIS PLAN MUST BE READ IN CONJUNCTION WITH THE APPROVED CUP AND CITY CROSS SECTIONS.
  - CONTRACTOR SHALL ENSURE THAT ALL UTILITY LOCATIONS ARE OBTAINED PRIOR TO ANY EXCAVATION FOR LANDSCAPING.
  - LOCATION OF ALL TREES TO BE STAKED BY THE CONTRACTOR AND VERIFIED IN THE FIELD BY LANDSCAPE ARCHITECT & CITY OF OTTAWA PRIOR TO THE EXCAVATION OF PITS.
  - ALL PLANT MATERIAL SHALL BE NURSERY GROWN STOCK UNLESS OTHERWISE NOTED.
  - TREES TO HAVE A MINIMUM 1800 CLEAR STEM ABOVE GRADE.
  - PLACE SOD ON A MINIMUM 150mm TOPSOIL.
  - CONTRACTOR TO MAKE GOOD ALL EXISTING AREAS DAMAGED BY HIS WORK TO THE SATISFACTION OF THE CITY OF OTTAWA.
  - THE CITY WILL BE NOTIFIED IF ANY TREES CANNOT BE LOCATED OR PLANTED DUE TO CONFLICTS WITH UTILITIES OR DRIVEWAYS. THE REQUIRED TREES NOT PLANTED ARE SUBJECT TO TREE BANKING. THE FINAL NUMBER OF TREES TO BE BANKED WILL BE PROVIDED TO THE CITY FOLLOWING ALL PLANTINGS.
  - ALL PLANT MATERIAL SHALL BE WARRANTED FOR TWO YEARS FROM THE DATE OF PERFORMANCE ACCEPTANCE AS DETERMINED BY THE CITY OF OTTAWA.
  - PERIODIC REVIEWS OF PLANTING SHALL BE CARRIED OUT BY THE LANDSCAPE ARCHITECT.
  - PLANTINGS TO BE STAKED FOR APPROVAL PRIOR TO CONSTRUCTION
  - CITY GRASS CUTTING RESPONSIBILITIES FOR SODDED AREAS SHALL BEGIN FOLLOWING PERFORMANCE ACCEPTANCE INSPECTION BY THE LANDSCAPE ARCHITECT AND THE CITY. ACCEPTANCE WILL BE PROVIDED ONLY IF:
    - SOD IS PROPERLY ESTABLISHED.
    - TURF IS FREE OF DEAD SPOTS AND WEEDS.
    - SODDED AREAS HAVE BEEN CUT WITHIN 24 HOURS PRIOR TO ACCEPTANCE INSPECTION.
    - MINIMUM OF 3 WEEKS HAVE ELAPSED FOLLOWING LAYING OF SOD.
    - A MINIMUM OF TWO CUTS HAVE TAKEN PLACE.
    - SODDED AREAS HAVE BEEN TOP-DRESSED, SEEDED AND AERATED

**PLANT LIST**

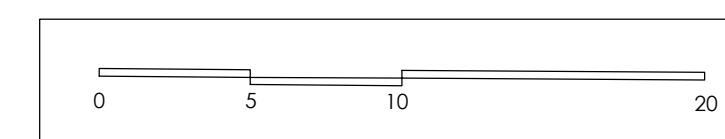
KEY	QTY	BOTANICAL NAME	COMMON NAME	CAL.HGT. (mm)	ROOT	MATURE HEIGHT	MATURE SPREAD
<b>LARGE DECIDUOUS TREES</b>							
AS	11	ACER SACCHARUM	SUGAR MAPLE	60	B&B	25m	18m
QR	12	QUERCUS RUBRA	RED OAK	60	B&B	24m	18m
<b>MEDIUM DECIDUOUS TREES</b>							
AR	21	ACER RUBRUM 'AUTUMN FLAME'	AUTUMN FLAME RED MAPLE	60	B&B	13m	13m
PA	20	PYRUS CALLERYANA 'CAPITAL'	CAPITAL PEAR	60	B&B	11m	4m
QR	10	QUERCUS ROBUR 'ASTIGIATA'	PYRAMIDAL ENGLISH OAK	60	B&B	14m	5m
SH	13	SORBUS X HYBRIDA	MOUNTAIN-ASH	60	B&B	14m	6m
TM	13	TILIA MONGOLICA	MONGOLIAN LINDEN	60	B&B	14m	10m
<b>SMALL DECIDUOUS TREES</b>							
AC	2	AMELANCHIER CANADENSIS	SERVICEBERRY	60	B&B	7m	4m
<b>TREEFORM SHRUBS</b>							
Co	21	CORNUS ALTERNIFOLIA	PAGODA DOGWOOD	40	B&B	5m	
Ck	22	CORNUS KOUSA 'SATOMI'	SATOMI FLOWERING DOGWOOD	175cm	TREEFORM	5m	
Ea	10	EUONYMUS ALATUS 'COMPACTUS'	DWARF BURNING BUSH	150cm	TREEFORM	3m	
Pc	12	PRUNUS X CISTENA	PURPLE-LEAF SAND CHERRY	175cm	TREEFORM	3m	
<b>CONIFEROUS TREES</b>							
PP	3	PICEA PUNGENS 'AVATAR'	AVATAR BLUE SPRUCE	500cm	B&B		
PS	5	PINUS STROBUS	WHITE PINE	500cm	B&B		
<b>DECIDUOUS SHRUBS</b>							
Ck	35	CORNUS SERICEA 'FARROW'	ARCTIC FIRE DOGWOOD	175cm	3 GAL.		
Ef	3	EUONYMUS ALATUS 'FIREBALL'	FIREBALL BURNING BUSH	175cm	3 GAL.		
Po	24	PHYSCARPUS OPULEFOLIUS 'DIABOLO'	DIABOLO NINEBARK	175cm	3 GAL.		
Pv	3	PHILADELPHUS X VIRGINIALIS	MOCK ORANGE	175cm	3 GAL.		
<b>CONIFEROUS SHRUBS</b>							
Jc	65	JUNIPERUS CHINENSIS 'FAIRVIEW'	FAIRVIEW JUNIPER	275cm	3 GAL.		
Jc	6	JUNIPERUS CHINENSIS 'MINT JULEP'	MINT JULEP JUNIPER	125cm	3 GAL.		

**GRASSES**

cm	224	CAREX MORROWII 'ICE DANCE'	ICE DANCE SEDGE	30cm	1 GAL.
dc	87	DESCHAMPSIA CESPITOSA	TUFFED HAIR GRASS	100cm	1 GAL.
mc	533	MOLINIA CAERULEA 'VARIEGATA'	VARIEGATED PURPLE MOOR GRASS	70cm	1 GAL.
	846				

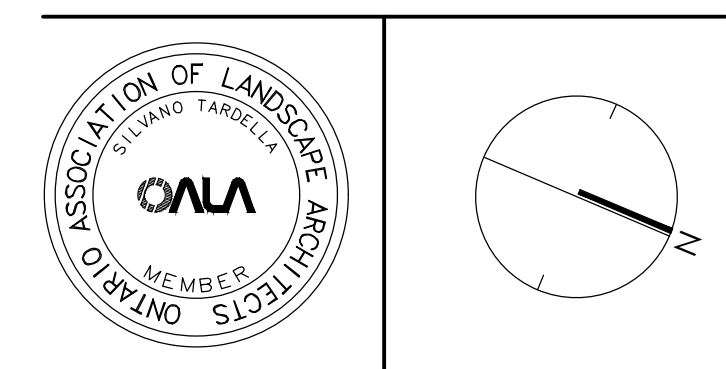
**PERENNIALS**

am	41	ALLIUM X 'MILLENIUM'	ORNAMENTAL ONION	50cm	1 GAL.
as	185	ASTER NOVYAE-ANGULAE 'PURPLE DOME'	NEW ENGLAND ASTER	50cm	1 GAL.
rd	161	RUDEBECKIA HIRTA	BLACK-EYED SUSAN	60cm	1 GAL.
ho	99	HOSTA 'AUGUST MOON'	AUGUST MOON HOSTA	45cm	1 GAL.
hs	38	HOSTA 'HOSTA SILVER BAY'	SILVER BAY HOSTA	40cm	1 GAL.
hg	126	HOSTA 'GREAT ARRIVAL'	GREAT ARRIVAL	45cm	1 GAL.
sm	161	SEDUM 'MAESTRO'	MAESTRO STONECROP	60cm	1 GAL.
	831				



**ESTIMATED CANOPY COVERAGE MATURITY**

TYPE OF TREE	AVERAGE MATURE SPREAD	AVERAGE MATURE CANOPY	QUANTITY OF TREES	CANOPY AREA*
DECIDUOUS	9.9 m	76.9 m²	152	11,688.8 m²
CONIFEROUS	7.3 m	41.8 m²	20	836 m²
TOTAL CANOPY COVERAGE :				<b>12,524.8 m²</b>
TOTAL SITE AREA:				36,378 m²
EST. CANOPY COVERAGE:				<b>34%</b>



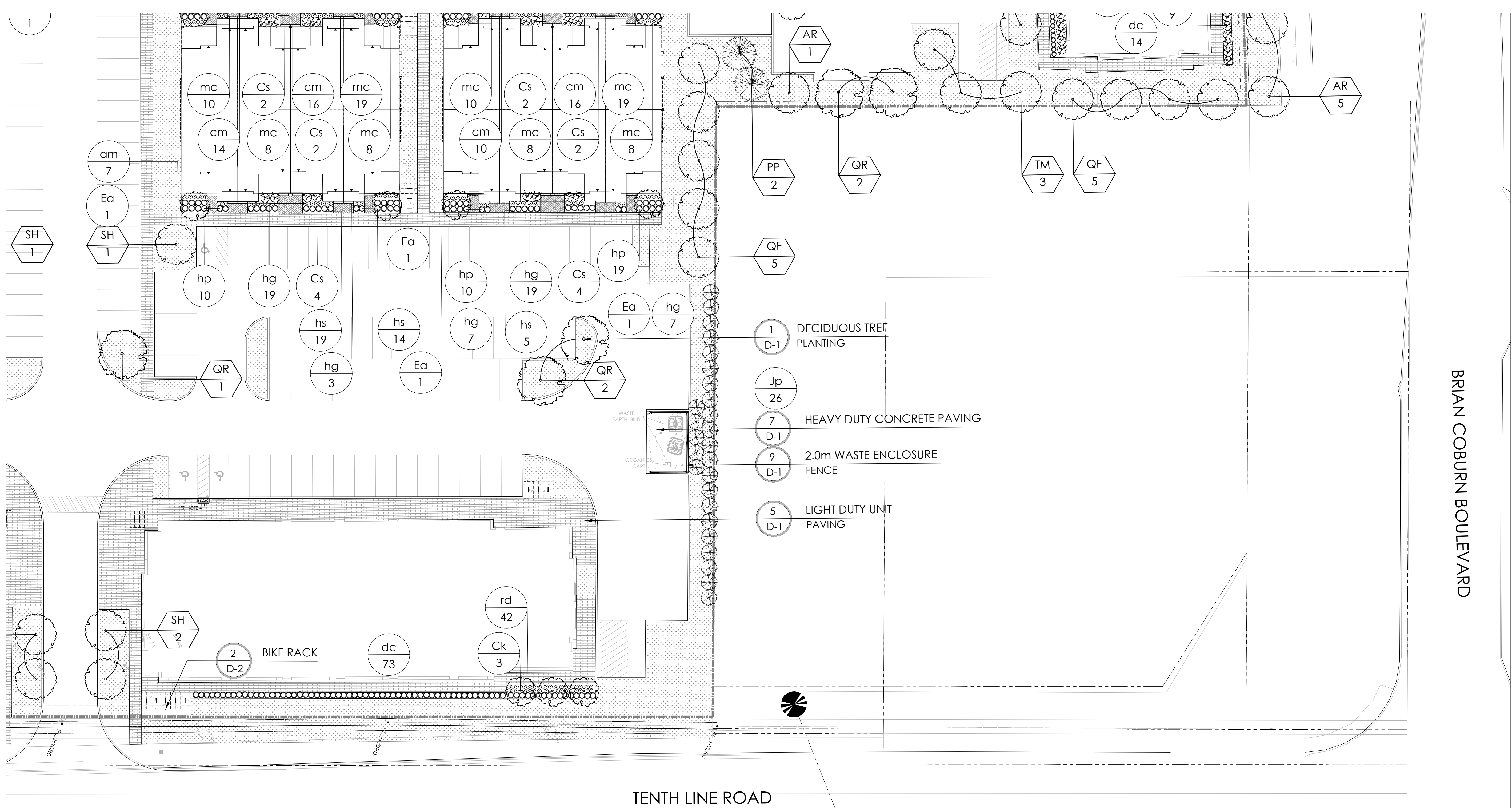
**NAK**  
design strategies  
1285 WELLINGTON STREET, OTTAWA, ON K1T 3A8 CANADA  
T 613.237.2345 F 613.237.4423 NAKDESIGNSTRATEGIES.COM

Project  
**MATTAMY HOMES**  
**DECOEUR DRIVE**  
2370 TENTH LINE ROAD

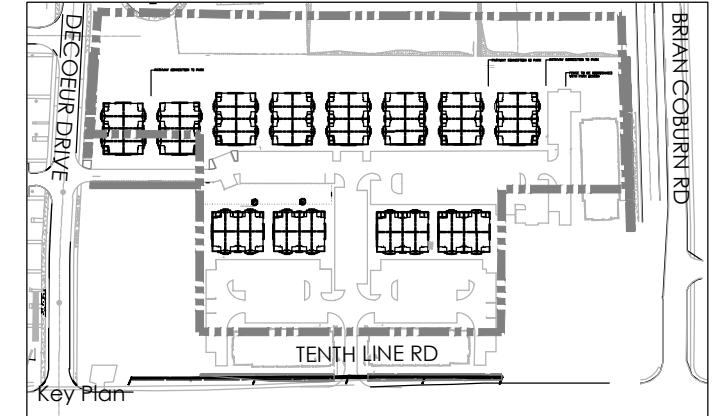
Title  
**LANDSCAPE PLAN**

Date DEC 2022 Sheet  
Scale 1:250  
Drawn SH  
Checked SC  
Job No. 21-165

**L3**



Contractor shall check all dimensions on the work and report any discrepancy to the Landscape Architect before proceeding. All drawings and specifications are the property of the Landscape Architect and must be returned at the completion of the work. This drawing is not to be used for construction until signed by the Landscape Architect.



- LEGEND**
- PROPERTY LINE
  - FENCING**
    - 2.0m WASTE ENCLOSURE FENCE
    - POST & RAIL FENCE
  - PLANTING**
    - LARGE DECIDUOUS TREE
    - MEDIUM DECIDUOUS TREE
    - SMALL DECIDUOUS TREE
    - TREEFORM SHRUBS
    - CONIFEROUS TREE
    - DECIDUOUS SHRUB
    - CONIFEROUS SHRUB
    - GRASSES/PERENNIALS
    - SOD
    - MEADOW PLANTING
  - SURFACING**
    - UNIT PAVING WALKWAYS
    - UNIT PAVING ENTRANCES
    - ASPHALT PAVING WITH UNIT PAVER BORDER
    - HEAVY DUTY CONCRETE PAVING
    - STONEDUST PAVING
  - UTILITIES**
    - PROPOSED HYDRO TRANSFORMER
    - PROPOSED CABLE PEDESTAL
    - PROPOSED BELL PEDESTAL
    - CURB STOP
    - PROPOSED BELL CABINET
    - PROPOSED STREET LIGHT
    - FIRE HYDRANT
    - EXISTING HYDRO POLE

No.	Description	Date
6	Issued for second submission	Dec. 09/22
5	Issued for coordination	Dec. 07/22
4	Issued Amenity Space for Client Review	Oct.25/22
3	Issued for client review	Aug. 24/22
2	Re-issued for First Submission	Dec. 21/21
1	Issued for First Submission	Dec.10/21
No. Description		Date
Revision		
City Approval Stamp		

- GENERAL NOTES:**
- ACER RUBRUM AND QUERCUS RUBRA TO BE SPRUNG DUG SPECIMENS AND PLANTED IN THE SPRING ONLY.
  - THE LOCATION OF THE TREES SHOWN ON THIS PLAN IS APPROXIMATE AND SHALL NOT BE SCALED FROM THIS DRAWING. THIS PLAN MUST BE READ IN CONJUNCTION WITH THE APPROVED CUP AND CITY CROSS SECTIONS.
  - CONTRACTOR SHALL ENSURE THAT ALL UTILITY LOCATIONS ARE OBTAINED PRIOR TO ANY EXCAVATION FOR LANDSCAPING.
  - LOCATION OF ALL TREES TO BE STAKED BY THE CONTRACTOR AND VERIFIED IN THE FIELD BY LANDSCAPE ARCHITECT & CITY OF OTTAWA PRIOR TO THE EXCAVATION OF PITS.
  - ALL PLANT MATERIAL SHALL BE NURSERY GROWN STOCK UNLESS OTHERWISE NOTED.
  - TREES TO HAVE A MINIMUM 1800 CLEAR STEM ABOVE GRADE.
  - PLACE SOD ON A MINIMUM 150mm TOPSOIL.
  - CONTRACTOR TO MAKE GOOD ALL EXISTING AREAS DAMAGED BY HIS WORK TO THE SATISFACTION OF THE CITY OF OTTAWA.
  - THE CITY WILL BE NOTIFIED IF ANY TREES CANNOT BE LOCATED OR PLANTED DUE TO CONFLICTS WITH UTILITIES OR DRIVEWAYS. THE REQUIRED TREES NOT PLANTED ARE SUBJECT TO TREE BANKING. THE FINAL NUMBER OF TREES TO BE BANKED WILL BE PROVIDED TO THE CITY FOLLOWING ALL PLANTINGS.
  - ALL PLANT MATERIAL SHALL BE WARRANTED FOR TWO YEARS FROM THE DATE OF PERFORMANCE ACCEPTANCE AS DETERMINED BY THE CITY OF OTTAWA.
  - PERIODIC REVIEWS OF PLANTING SHALL BE CARRIED OUT BY THE LANDSCAPE ARCHITECT.
  - PLANTINGS TO BE STAKED FOR APPROVAL PRIOR TO CONSTRUCTION
  - CITY GRASS CUTTING RESPONSIBILITIES FOR SODDED AREAS SHALL BEGIN FOLLOWING PERFORMANCE ACCEPTANCE INSPECTION BY THE LANDSCAPE ARCHITECT AND THE CITY. ACCEPTANCE WILL BE PROVIDED ONLY IF:
    - SOD IS PROPERLY ESTABLISHED.
    - TURF IS FREE OF DEAD SPOTS AND WEEDS.
    - SODDED AREAS HAVE BEEN CLIT WITHIN 24 HOURS PRIOR TO ACCEPTANCE INSPECTION.
    - MINIMUM OF 3 WEEKS HAVE ELAPSED FOLLOWING LAYING OF SOD.
    - A MINIMUM OF TWO CUTS HAVE TAKEN PLACE.
    - SODDED AREAS HAVE BEEN TOP-DRESSED, SEEDED AND AERATED

**PLANT LIST**

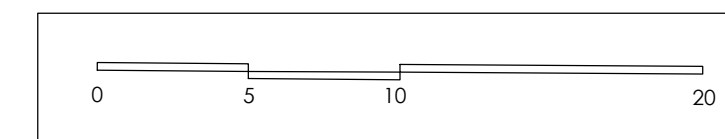
KEY	QTY	BOTANICAL NAME	COMMON NAME	CAL.HT. (mm)	ROOT	MATURE HEIGHT	MATURE SPREAD
<b>LARGE DECIDUOUS TREES</b>							
AS	11	ACER SACCHARUM	SUGAR MAPLE	60	B&B	25m	18m
QR	12	QUERCUS RUBRA	RED OAK	60	B&B	24m	18m
<b>MEDIUM DECIDUOUS TREES</b>							
AR	21	ACER RUBRUM 'AUTUMN FLAME'	AUTUMN FLAME RED MAPLE	60	B&B	13m	13m
PA	20	PYRUS CALLERYANA 'CAPITAL'	CAPITAL PEAR	60	B&B	11m	4m
QF	10	QUERCUS ROBUR 'ASTIGIATA'	PYRAMIDAL ENGLISH OAK	60	B&B	14m	5m
SH	13	SORBUS X HYBRIDA	MOUNTAIN-ASH	60	B&B	14m	6m
TM	13	TILIA MONGOLICA	MONGOLIAN LINDEN	60	B&B	14m	10m
<b>SMALL DECIDUOUS TREES</b>							
AC	2	AMELANCHIER CANADENSIS	SERVICEBERRY	60	B&B	7m	4m
<b>TREEFORM SHRUBS</b>							
Co	21	CORNUS ALTERNIFOLIA	PAGODA DOGWOOD	40	B&B	5m	
Ck	22	CORNUS KOUSA 'SATOMI'	SATOMI FLOWERING DOGWOOD	175cm	TREEFORM	5m	
Ea	10	EUONYMUS ALATUS 'COMPACTUS'	DWARF BURNING BUSH	150cm	TREEFORM	3m	
Pc	12	PRUNUS X CISTENA	PURPLE-LEAF SAND CHERRY	175cm	TREEFORM	3m	
<b>CONIFEROUS TREES</b>							
PP	3	PICEA PUNGENS 'AVATAR'	AVATAR BLUE SPRUCE	500cm	B&B		
PS	5	PINUS STROBUS	WHITE PINE	500cm	B&B		
<b>DECIDUOUS SHRUBS</b>							
Ck	35	CORNUS SERICEA 'FARROW'	ARCTIC FIRE DOGWOOD	175cm	3 GAL.		
Ef	3	EUONYMUS ALATUS 'FIREBALL'	FIREBALL BURNING BUSH	175cm	3 GAL.		
Po	24	PHYSCARPUS OPULOFOLIUS 'DIABOLO'	DIABOLO NINEBARK	175cm	3 GAL.		
Pv	3	PHILADELPHUS X VIRGINIALIS	MOCK ORANGE	175cm	3 GAL.		
<b>CONIFEROUS SHRUBS</b>							
Jc	65	JUNIPERUS CHINENSIS 'FAIRVIEW'	FAIRVIEW JUNIPER	275cm	3 GAL.		
Jc	6	JUNIPERUS CHINENSIS 'MINT JULEP'	MINT JULEP JUNIPER	125cm	3 GAL.		

**GRASSES**

am	226	CAREX MORROWII 'ICE DANCE'	ICE DANCE SEDGE	30cm	1 GAL.
dc	87	DESCHAMPSIA CESPITOSA	TUFFED HAIR GRASS	100cm	1 GAL.
mc	533	MOLINIA CAERULEA 'VARIEGATA'	VARIEGATED PURPLE MOOR GRASS	70cm	1 GAL.
	846				

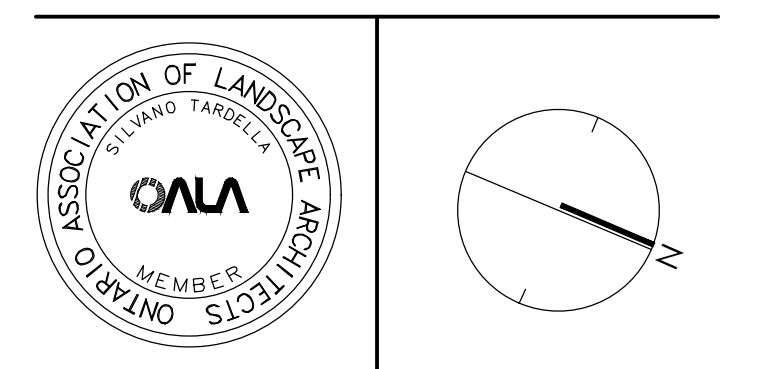
**PERENNIALS**

am	61	ALLIUM X 'MILLENIUM'	ORNAMENTAL ONION	50cm	1 GAL.
as	185	ASTER NOVYAE-ANGULAE 'PURPLE DOME'	NEW ENGLAND ASTER	50cm	1 GAL.
rd	161	RUDEBECKIA HIRTA	BLACK-EYED SUSAN	60cm	1 GAL.
ho	99	HOSTA 'AUGUST MOON'	AUGUST MOON HOSTA	45cm	1 GAL.
hs	38	HOSTA 'SILVER BAY'	SILVER BAY HOSTA	40cm	1 GAL.
hg	126	HOSTA 'GREAT ARRIVAL'	GREAT ARRIVAL	45cm	1 GAL.
sm	161	SEDUM 'MAESTRO'	MAESTRO STONECROP	60cm	1 GAL.
	831				



**ESTIMATED CANOPY COVERAGE MATURITY**

TYPE OF TREE	AVERAGE MATURE SPREAD	AVERAGE MATURE CANOPY	QUANTITY OF TREES	CANOPY AREA*
DECIDUOUS	9.9 m	76.9 m²	152	11,688.8 m²
CONIFEROUS	7.3 m	41.8 m²	20	836 m²
<b>TOTAL CANOPY COVERAGE :</b>				<b>12,524.8 m²</b>
<b>TOTAL SITE AREA:</b>				<b>36,378 m²</b>
<b>EST. CANOPY COVERAGE:</b>				<b>34%</b>



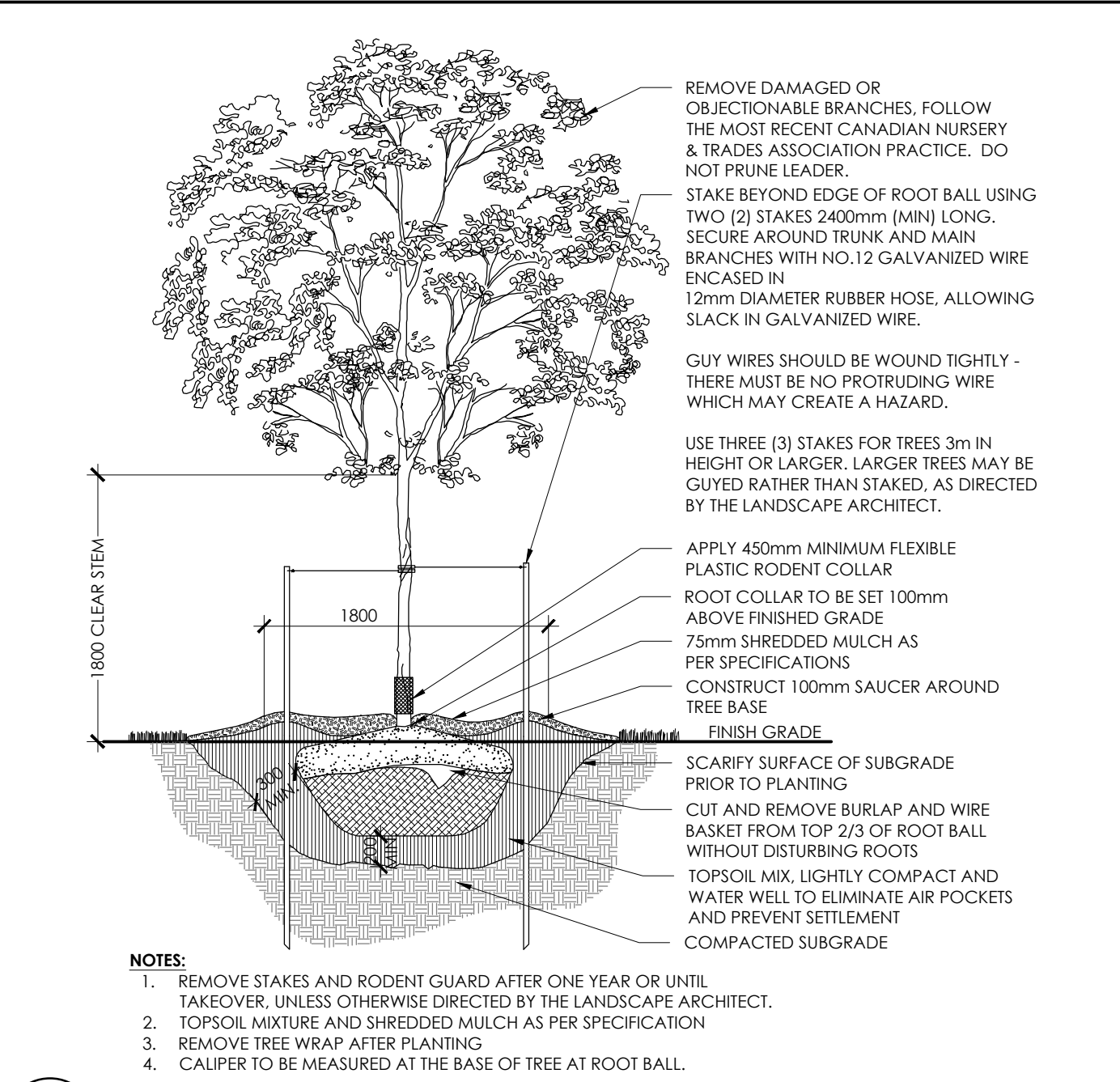
**NAK**  
design strategies  
1285 WELLINGTON STREET, OTTAWA, ON K1Y 3A8 CANADA  
T 613.237.2345 F 613.237.4423 NAKDESIGNSTRATEGIES.COM

**MATTAMY HOMES**  
DECOEUR DRIVE  
2370 TENTH LINE ROAD

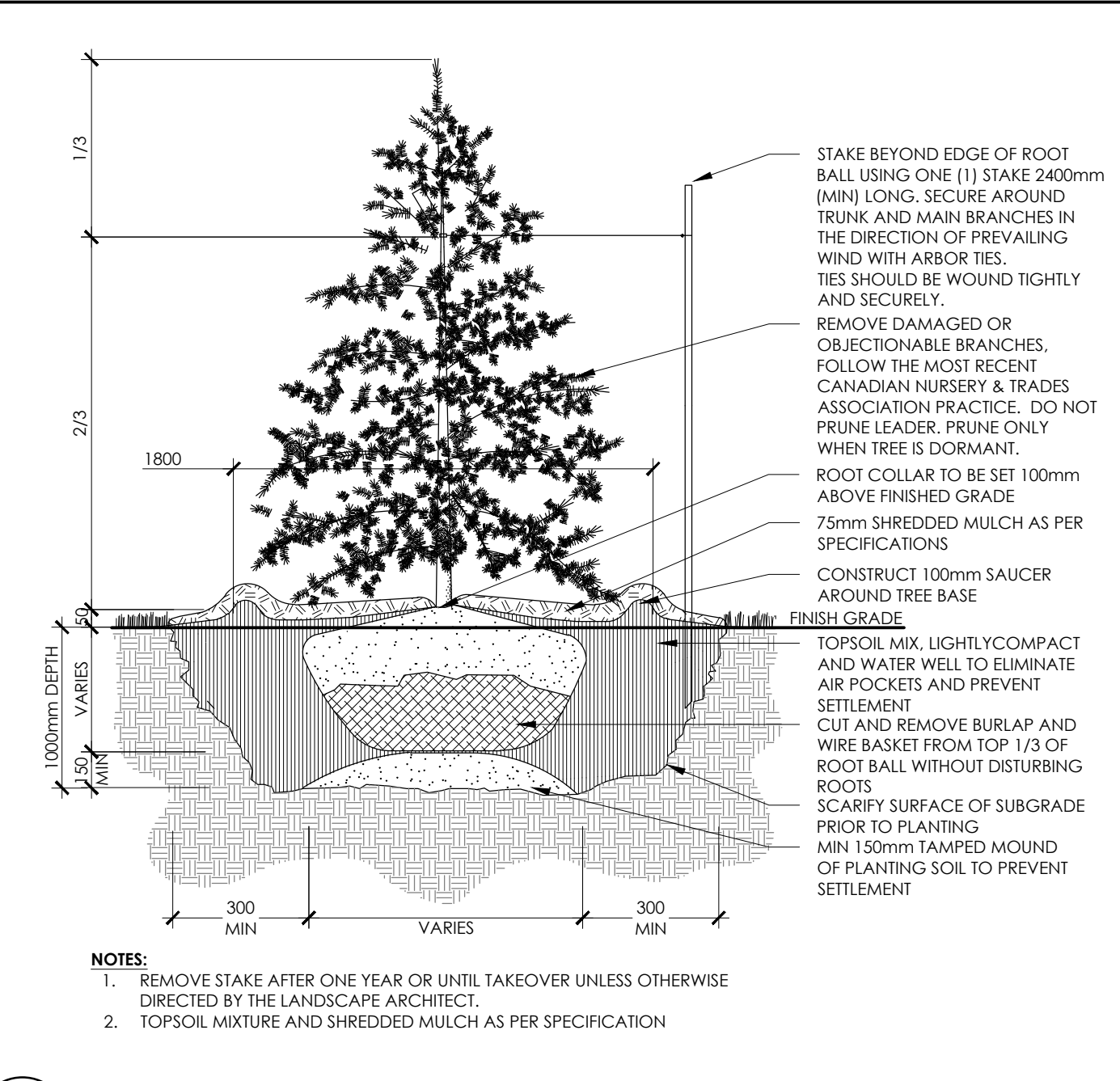
Date: DEC 2022  
Scale: 1:250  
Drawn: SH  
Checked: JSC  
Job No.: 21-145

Sheet: **L4**

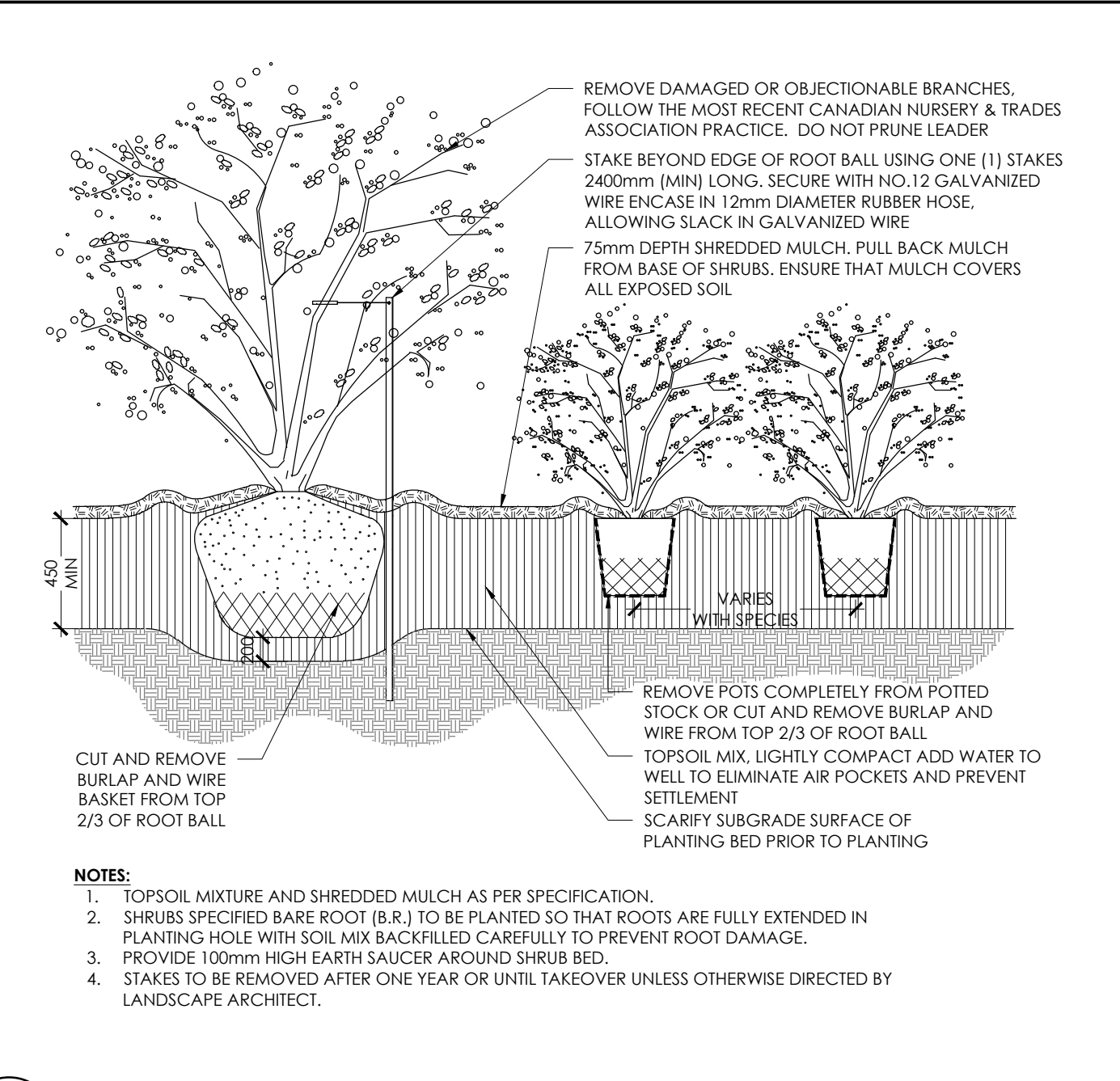
Contractor shall check all dimensions on the work and report any discrepancy to the Landscape Architect before proceeding. All drawings and specifications are the property of the Landscape Architect and must be returned at the completion of the work. This drawing is not to be used for construction until signed by the Landscape Architect.



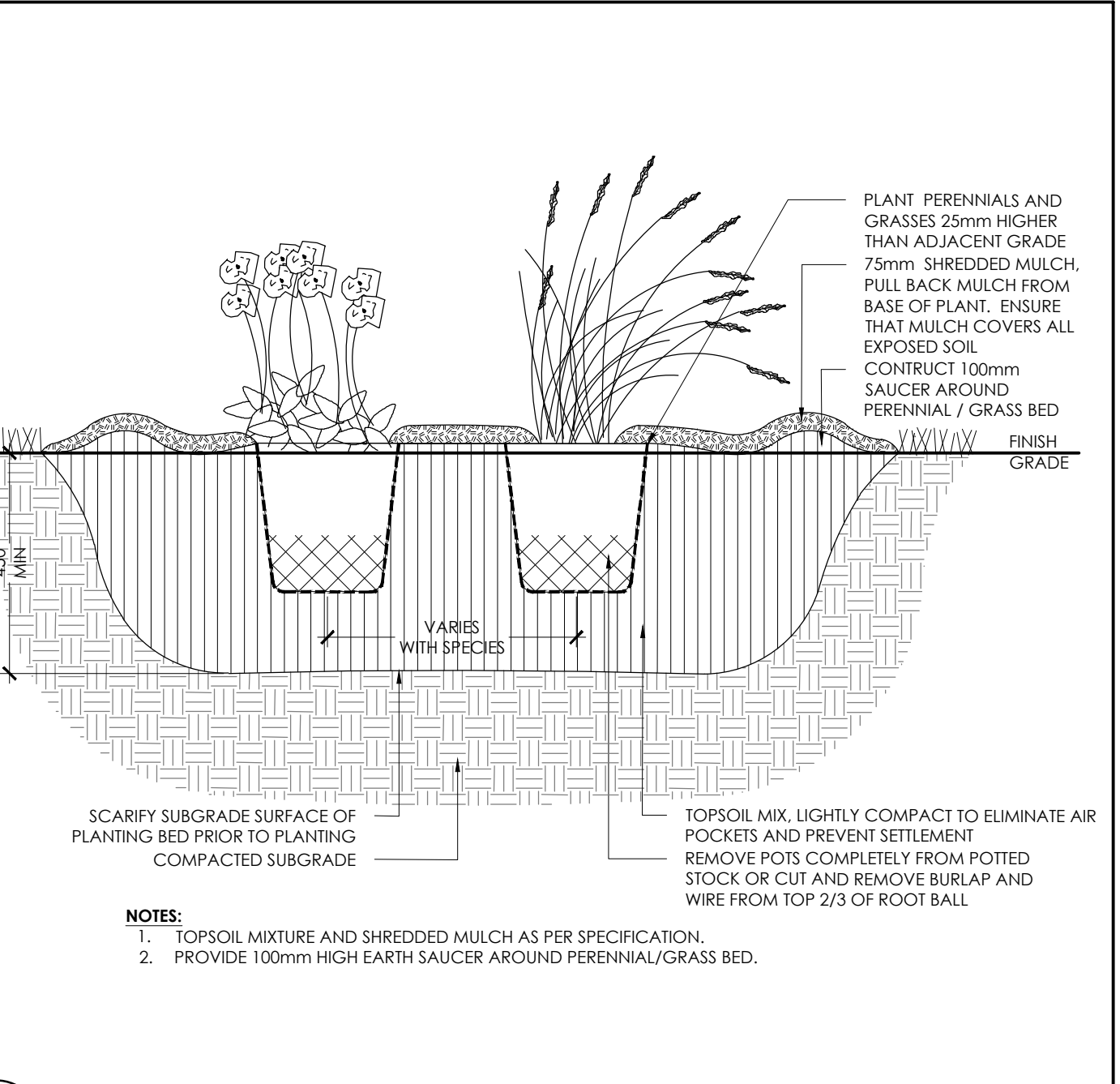
1 DECIDUOUS TREE PLANTING  
N.T.S.



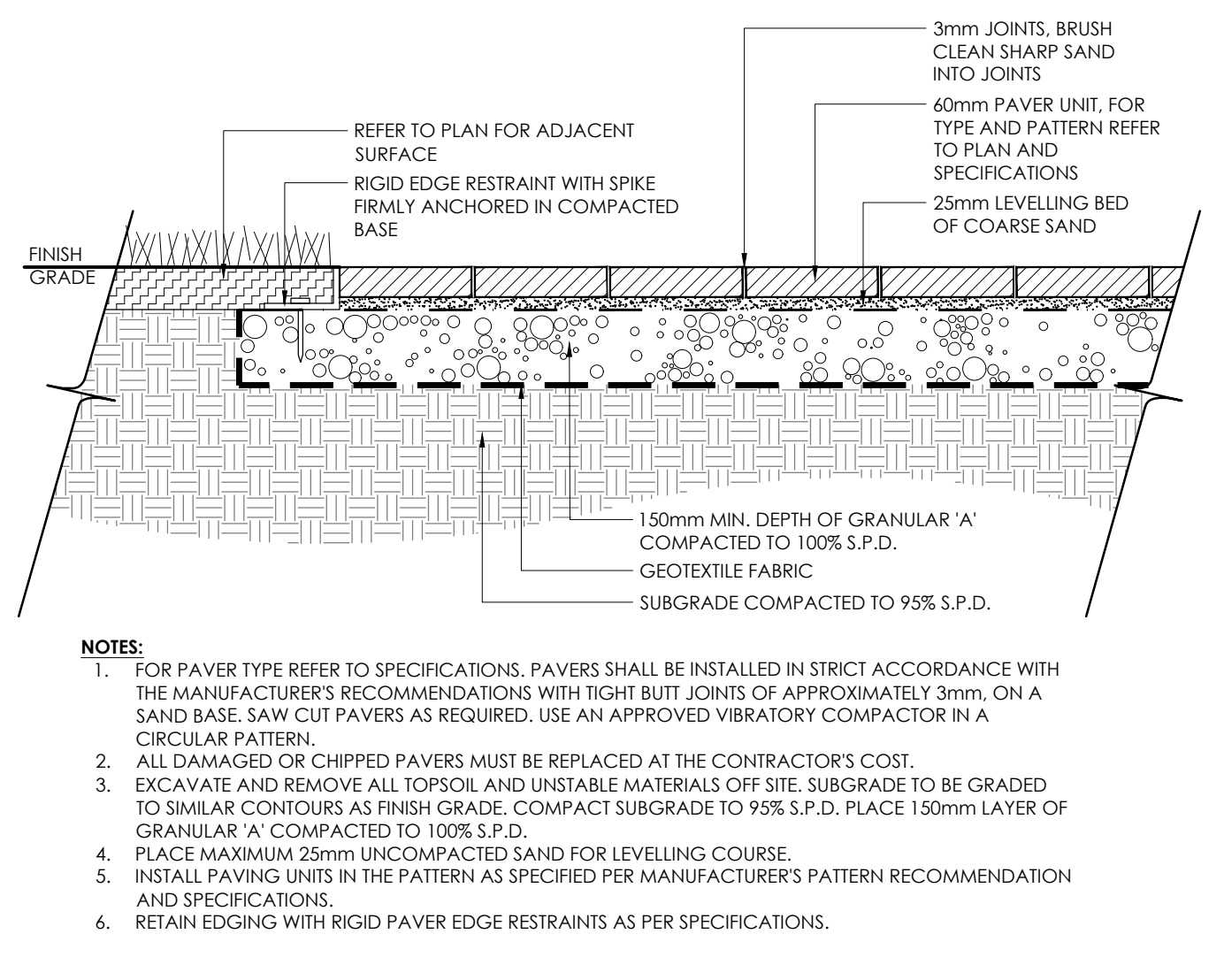
2 CONIFEROUS TREE PLANTING  
N.T.S.



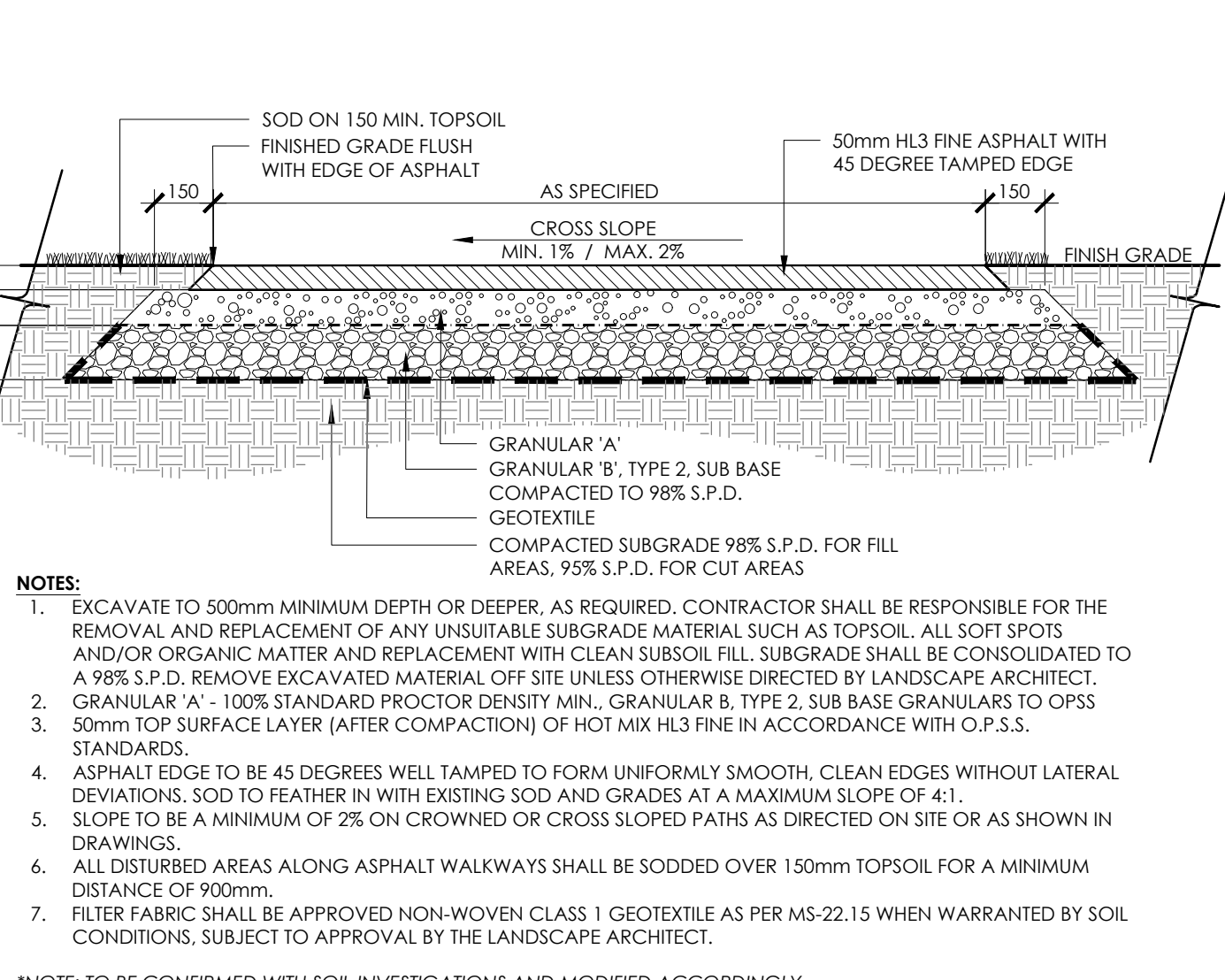
3 CONTINUOUS SHRUB BED PLANTING  
N.T.S.



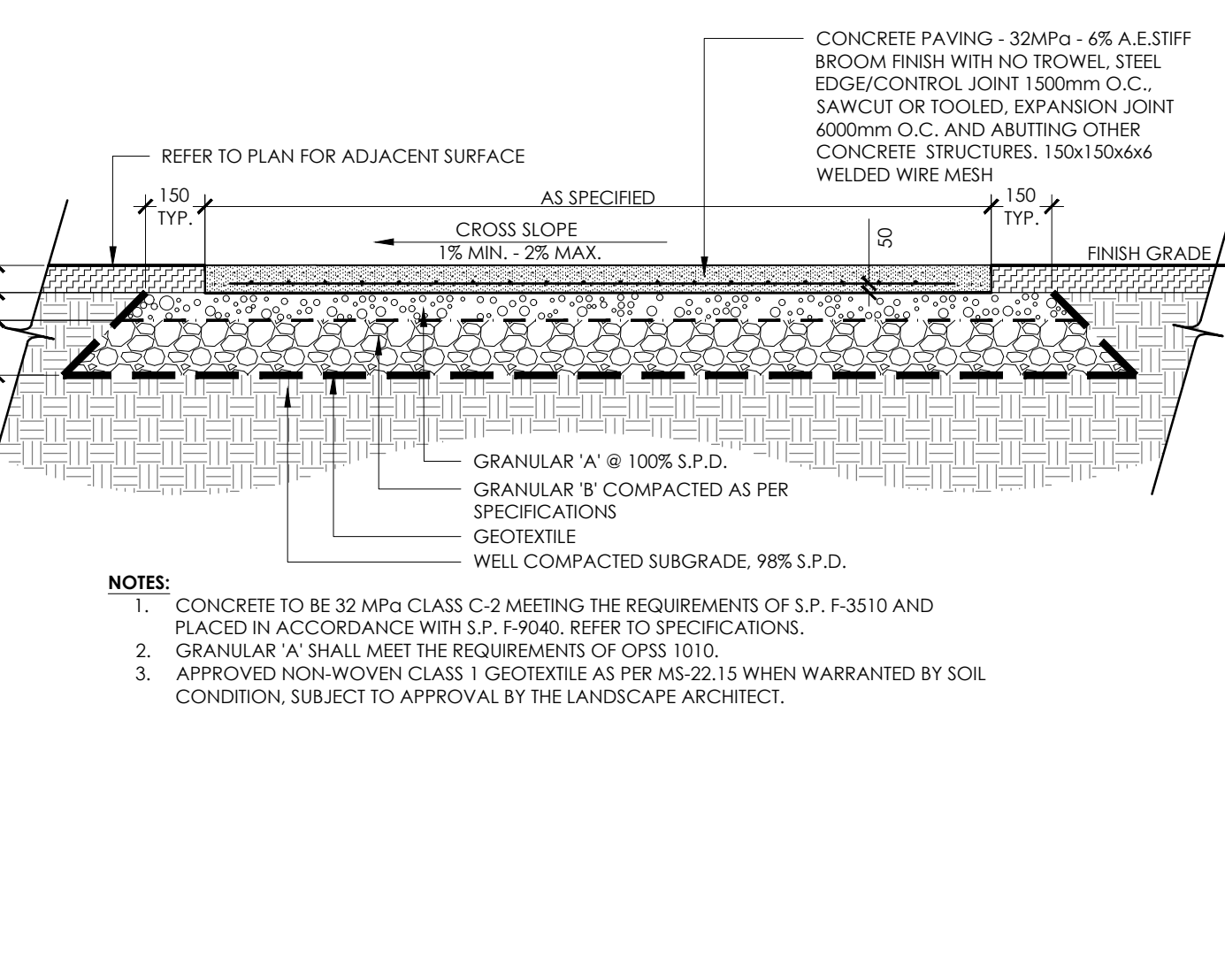
4 PERENNIAL AND ORNAMENTAL GRASS PLANTING  
N.T.S.



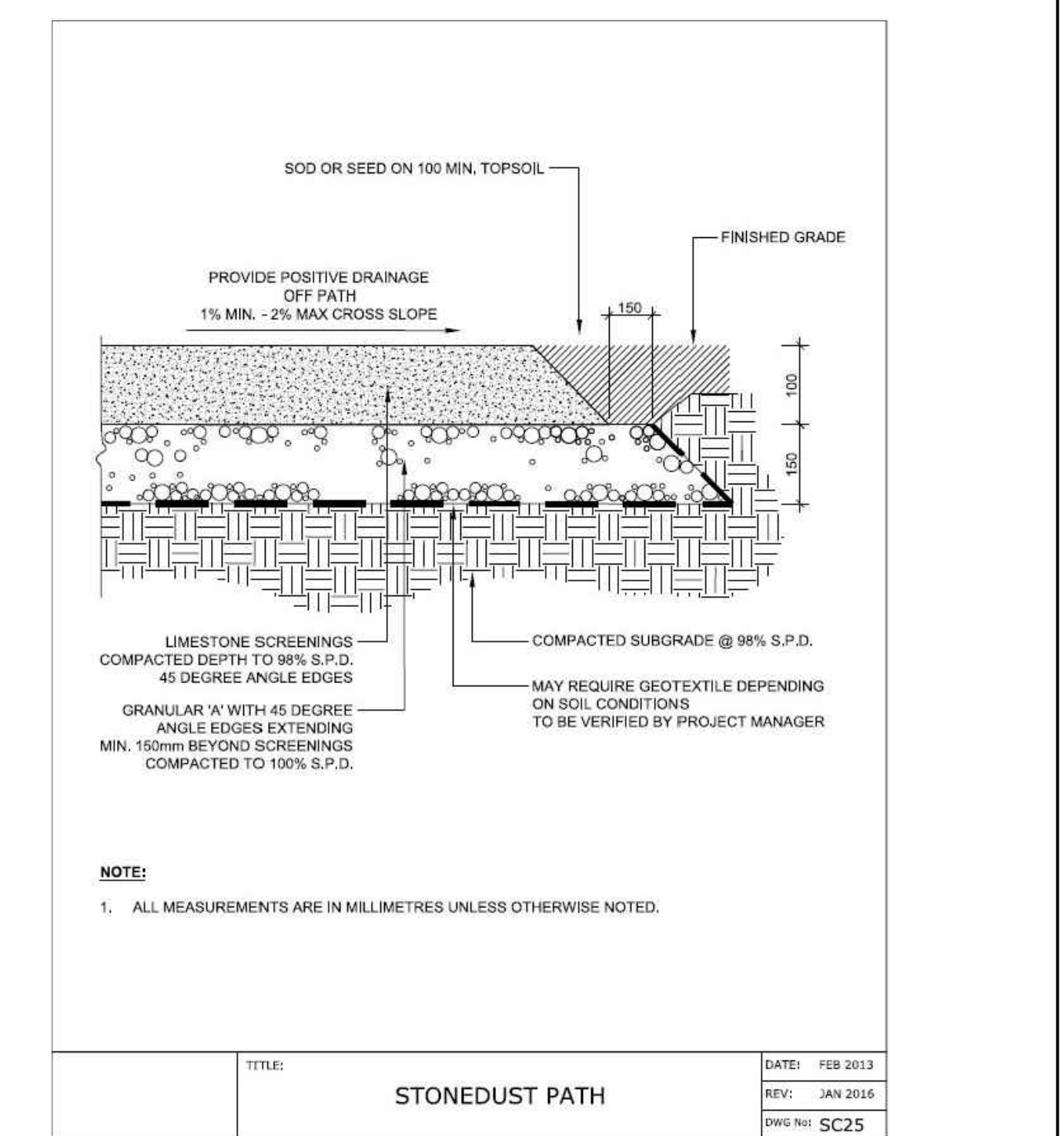
5 LIGHT DUTY UNIT PAVING  
N.T.S.



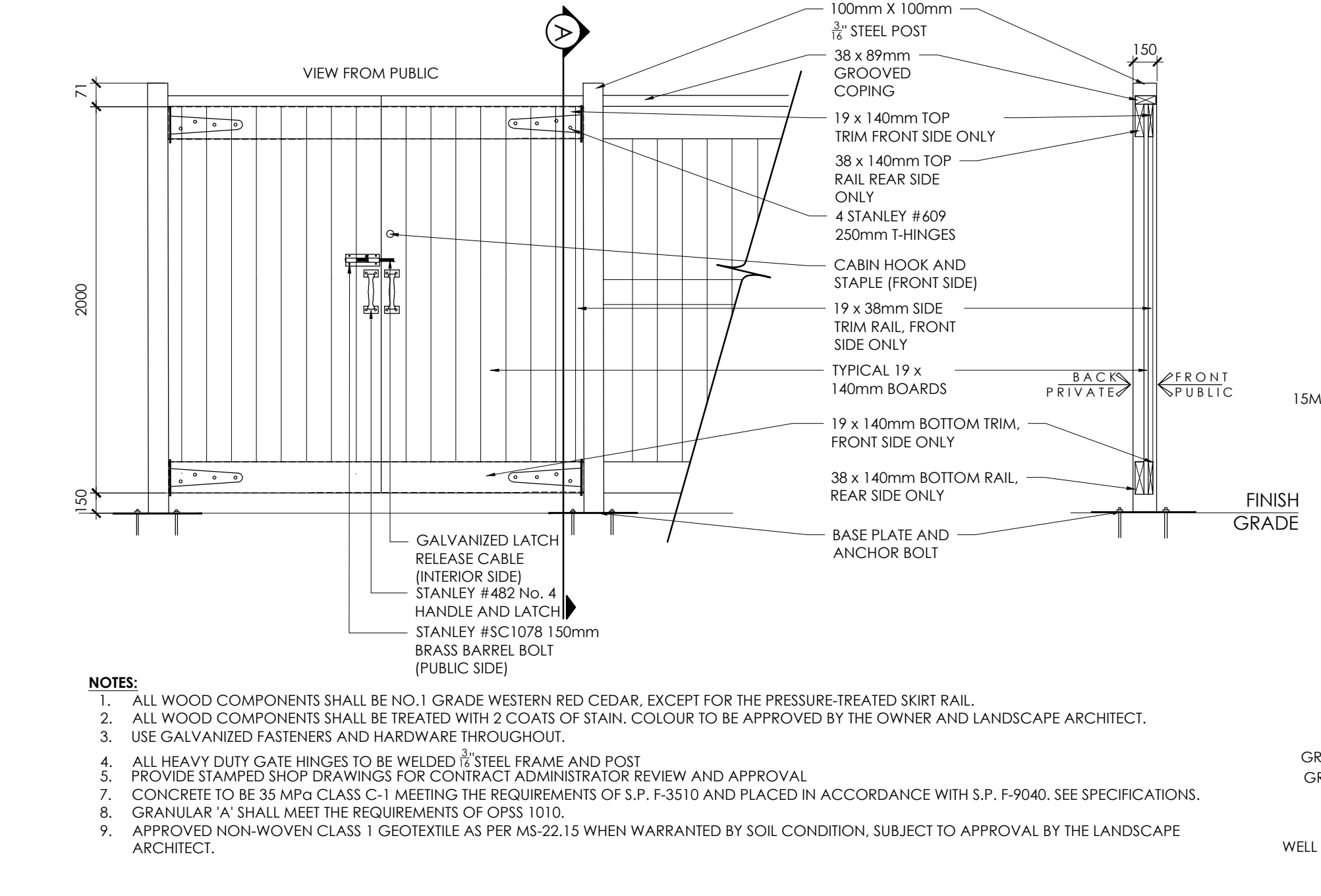
6 HEAVY DUTY ASPHALT PAVING  
N.T.S.



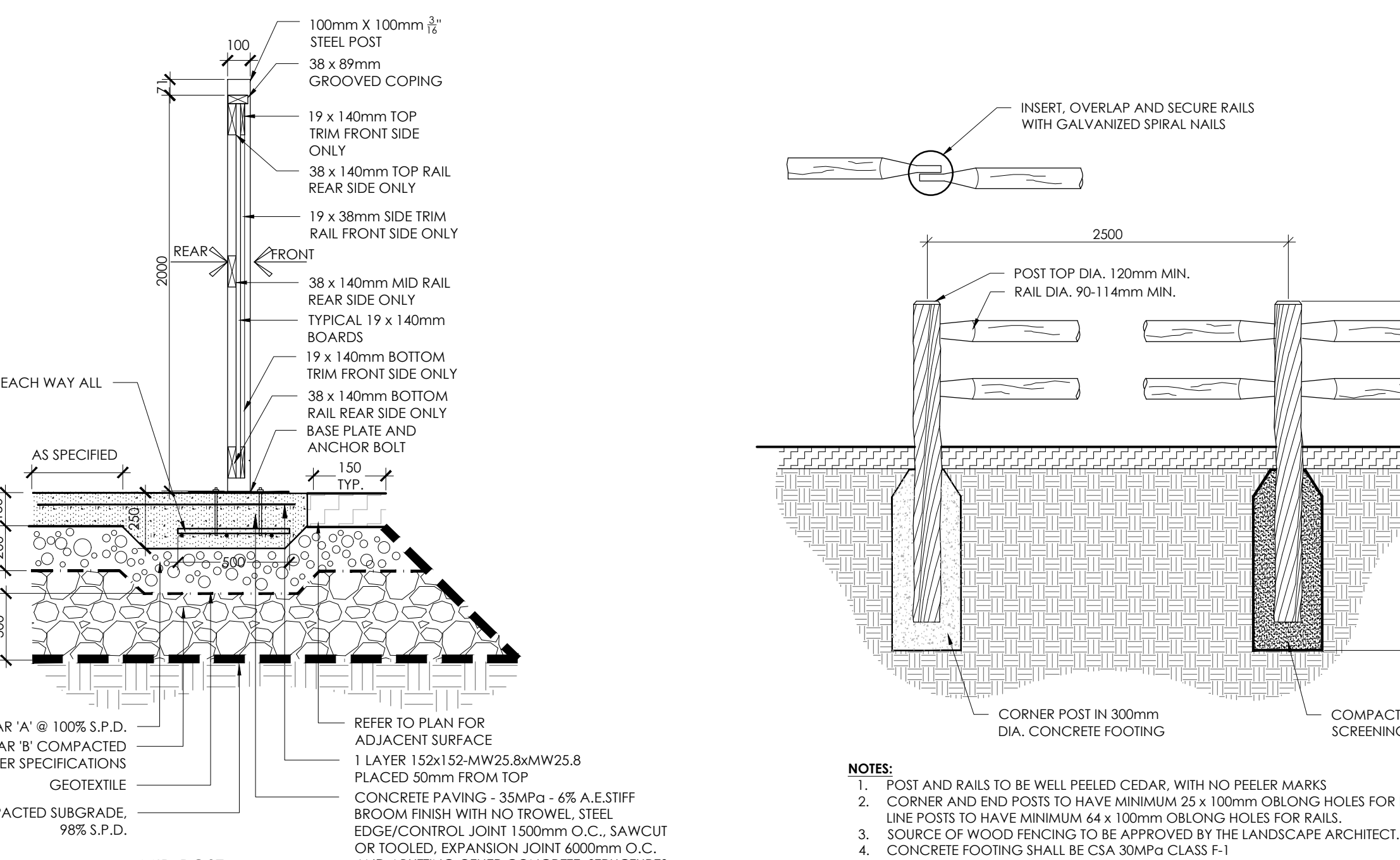
7 HEAVY DUTY CONCRETE PAVING  
N.T.S.



8 STONEDUST PATH  
N.T.S.



9 2.0m GARBAGE ENCLOSURE FENCE  
N.T.S.



10 TWO-RAIL POST AND RAIL FENCE  
N.T.S.

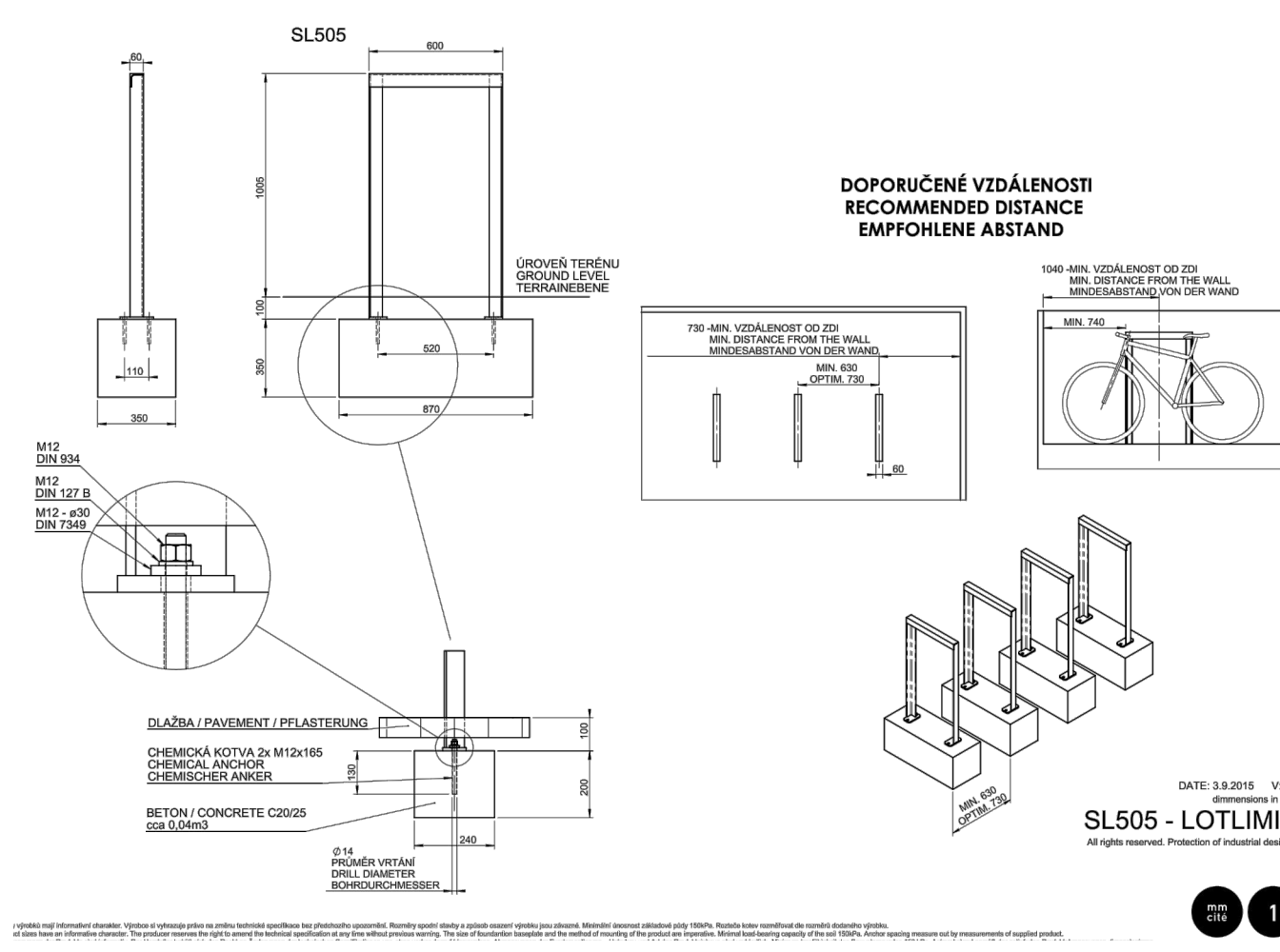
No.	Description	Date
6	Issued for second submission	Dec. 09/22
5	Issued for coordination	Dec. 07/22
4	Issued Amenity Space for Client Review	Oct.25/22
3	Issued for client review	Aug. 24/22
2	Re-issued for First Submission	Dec. 21/21
1	Issued for First Submission	Dec. 10/21
Revision	Date	
City Approval Stamp		

ONTARIO ASSOCIATION OF LANDSCAPE ARCHITECTS  
SILVERADO TRADE MARK  
MEMBER  
**NAK**  
design strategies  
1285 WELLINGTON STREET, OTTAWA, ON K1Y 3A8 CANADA  
T 613.237.2345 F 613.237.6423 NAKDESIGNSTRATEGIES.COM  
Project

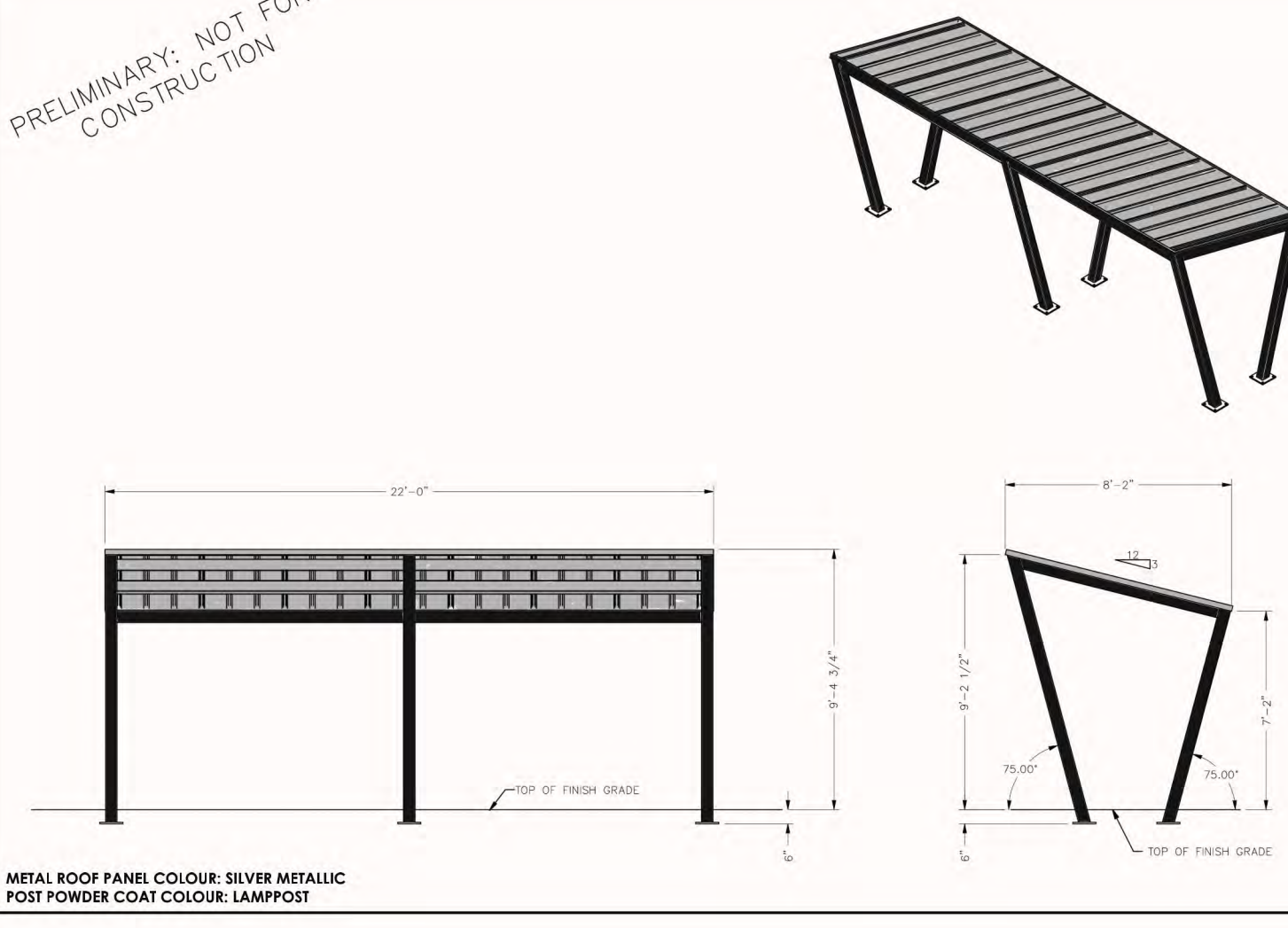
**MATTAMY HOMES**  
**DECOEUR DRIVE**  
2370 TENTH LINE ROAD

Date: DEC 2022  
Scale: 1:250  
Drawn: SH  
Checked: DC  
Job No: 21-145

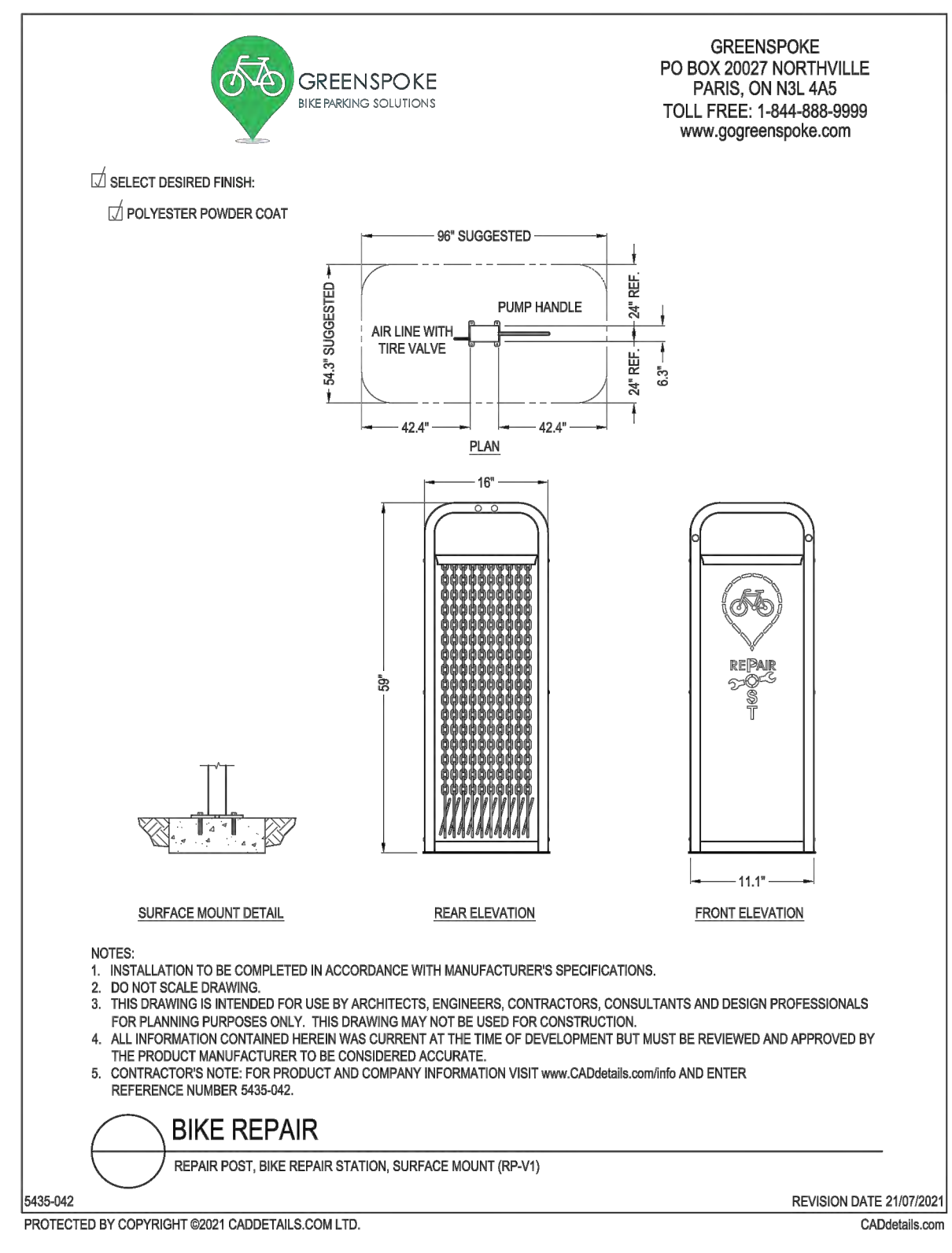
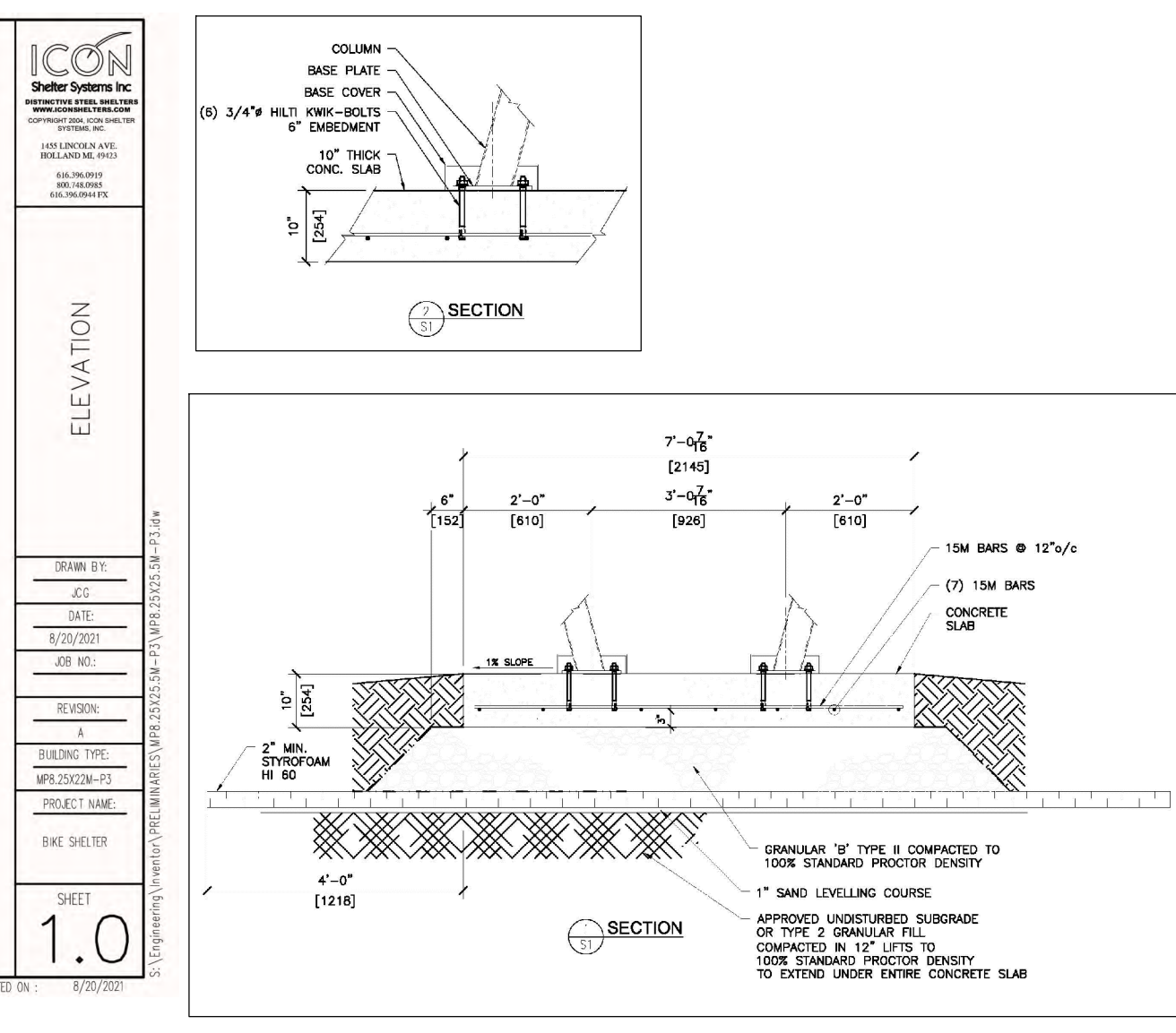
Sheet  
**D1**



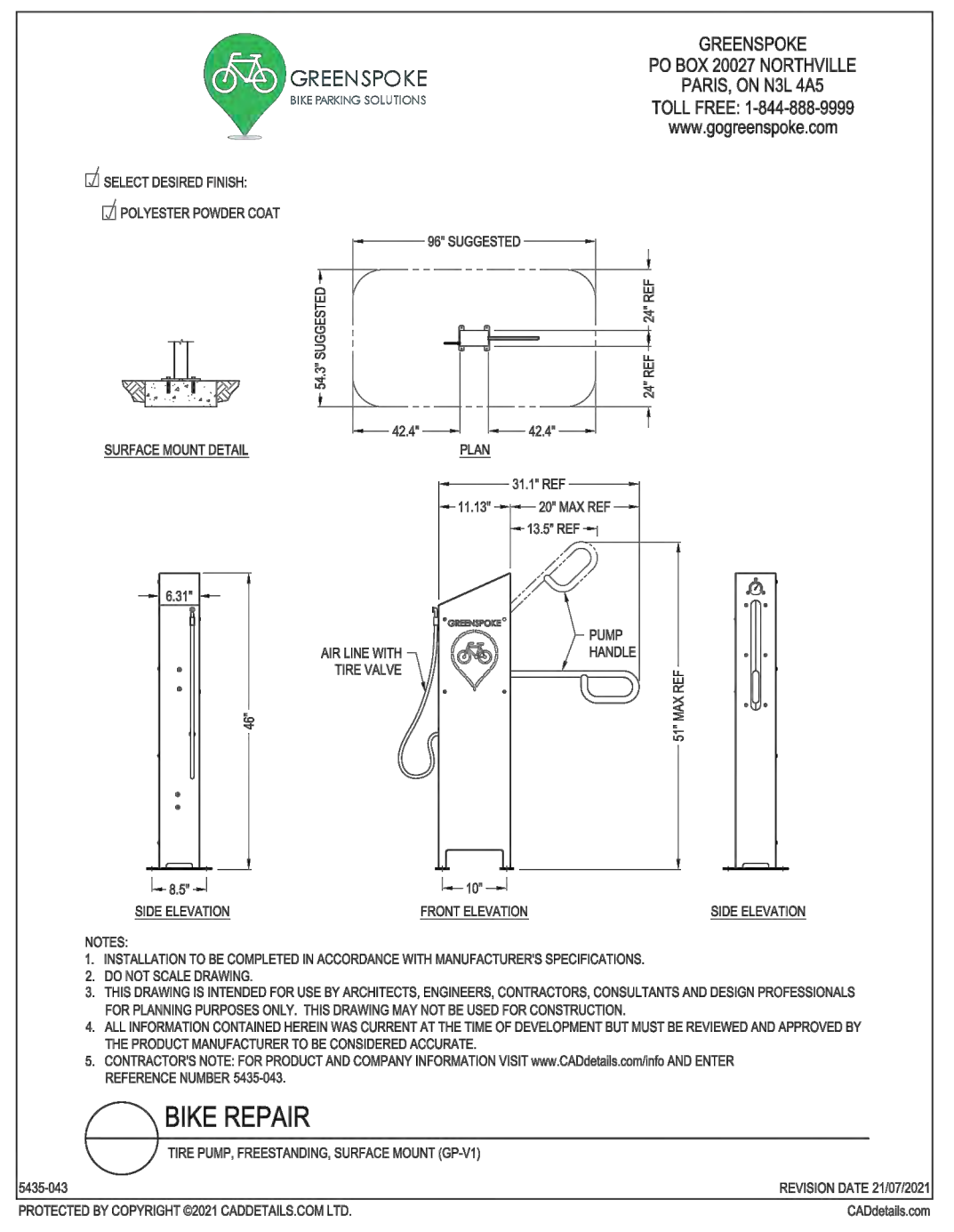
1 BIKE RACK  
N.T.S.



2 BIKE SHELTER  
N.T.S.



3 BIKE REPAIR STATION  
N.T.S.



4 PRECAST CONCRETE SEATING WALL  
N.T.S.

### Lafitt® Tandem® 90 and 180 Wall

**Lafitt® Tandem® Wall - 90mm Veneer**

DIMENSIONS (MM)	DIMENSIONS (IN)	COLORS	TYPICAL ROW
A 90 x 67 x 205	3 9/16 x 2 5/8 x 7 7/8	16250905 Range Amboule Beige	A G G F G D
B 90 x 67 x 268	3 9/16 x 2 5/8 x 10 1/2	16250907 Range Newport Grey	A G G F G D
C 90 x 67 x 335	3 9/16 x 2 5/8 x 13 3/8	16251151 Rockwood Black	A G G F G D
D 90 x 67 x 402	3 9/16 x 2 5/8 x 15 13/16	16250906 Range Margaux Beige	A G G F G D
Area/Tube 3.92 m <sup>2</sup> 4 Rows 42.32 m <sup>2</sup>		16251849 Range Scandinave Grey	A G G F G D
Weight/Unit (long) 4 kg 8 lb		A set of 4 units = 1.57 m <sup>2</sup>	A G G F G D
Area/Tube 0.28 m <sup>2</sup> 2 Rows 0.56 m <sup>2</sup>		Sold by meter	A G G F G D
Qty/Tube A=36 B=36 C=36 D=36		Can be double stacked	A G G F G D
Length/Tube 12.89 m 42.28 ft		Production location Metacafe	A G G F G D
Length/Tube 43.56 m 142.86 ft			A G G F G D
Weight/Tube 550 kg 1220 lb			A G G F G D

**Lafitt® Tandem® Wall - 180mm Veneer**

DIMENSIONS (MM)	DIMENSIONS (IN)	COLORS	TYPICAL ROW
E 180 x 67 x 380	7 1/8 x 2 5/8 x 15 1/8	16250908 Range Amboule Beige	F G G E
F 180 x 67 x 452	7 1/8 x 2 5/8 x 17 3/8	16250910 Range Margaux Beige	F G G E
G 180 x 67 x 469	7 1/8 x 2 5/8 x 18 1/2	16250909 Range Newport Grey	F G G E
Area/Tube 4.32 m <sup>2</sup> 4 Rows 46.82 m <sup>2</sup>		16251152 Rockwood Black	F G G E
Weight/Unit (long) 10 kg 22 lb		16251852 Range Scandinave Grey	F G G E
Area/Tube 1.08 m <sup>2</sup> 11.63 m <sup>2</sup>		A set of 4 units = 2.32 m <sup>2</sup>	F G G E
Qty/Tube E=30 F=30 G=30		Sold by meter	F G G E
Length/Tube 6.22 m 20.41 ft		Can be double stacked	F G G E
Length/Tube 24.08 m 79.00 ft		Production location Metacafe	F G G E
Weight/Tube 624 kg 1395 lb			F G G E

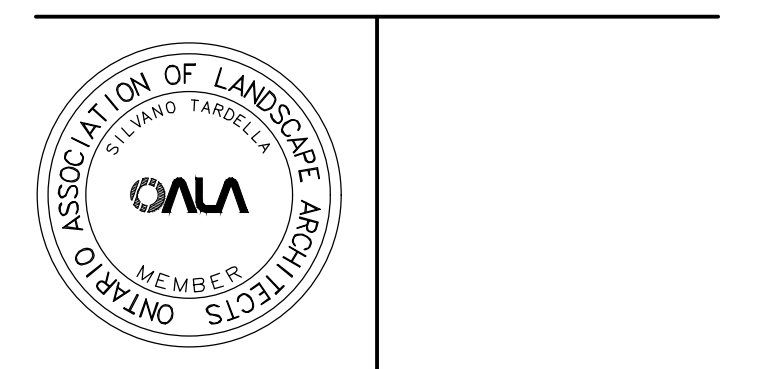
**TECHNICAL INFORMATION**

Product	Standard	Flexural Strength	Compressive Strength	Deicing salt freeze-thaw durability	Density	Absorption	Dimension Tolerance*
Lafitt Tandem 90 and 180 wall	ASTM C 1372	N/A	30 MPa	N/A	2300 kg/m <sup>3</sup>	5%	Length: ±2.0 mm Width: ±0.5 mm Height: ±1.0 mm

**Applications:** Retaining wall (by using 90 mm and 180 mm Next structural units) - Double-sided wall (by using double-sided concrete or plastic connectors) - Pillars (by using the Tandem Wall Grid Pillar kit) - Steps (by using Lafitt Plus Step unit)  
**Recommended Coping:** Lafitt Plus Coping unit and Lafitt Plus Coping unit  
 Additional details: See our landscaping installation guide on our website.

Contractor shall check all dimensions on the work and report any discrepancy to the Landscape Architect before proceeding. All drawings and specifications are the property of the Landscape Architect and must be returned at the completion of the work. This drawing is not to be used for construction until signed by the Landscape Architect.

No.	Description	Date
6	Issued for second submission	Dec. 09/22
5	Issued for coordination	Dec. 07/22
4	Issued Amenity Space for Client Review	Oct.25/22
3	Issued for client review	Aug. 24/22
2	Re-issued for First Submission	Dec. 21/21
1	Issued for First Submission	Dec.10/21



**NAK** design strategies  
 1285 WELLINGTON STREET, OTTAWA, ON K1Y 3A8 CANADA  
 T 613.237.2345 F 613.237.4423 NAKDESIGNSTRATEGIES.COM

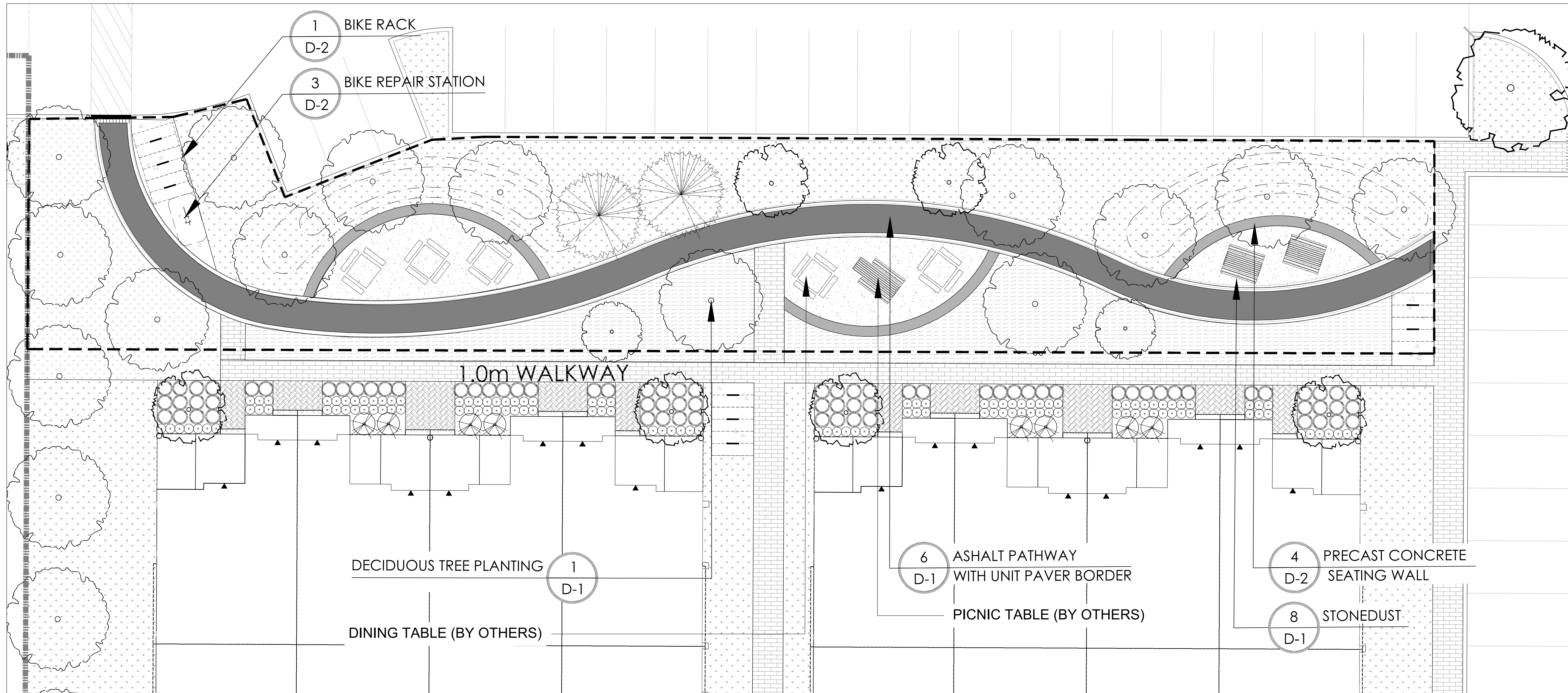
MATTAMY HOMES  
 DECOEUR DRIVE  
 2370 TENTH LINE ROAD

Date	Scale	Drawn	Checked	Job No.
DEC 2022	1:250	SH	DC	21-145

DETAILS

D2

Contractor shall check all dimensions on the work and report any discrepancy to the Landscape Architect before proceeding. All drawings and specifications are the property of the Landscape Architect and must be returned at the completion of the work. This drawing is not to be used for construction until signed by the Landscape Architect.



1.0m WALKWAY

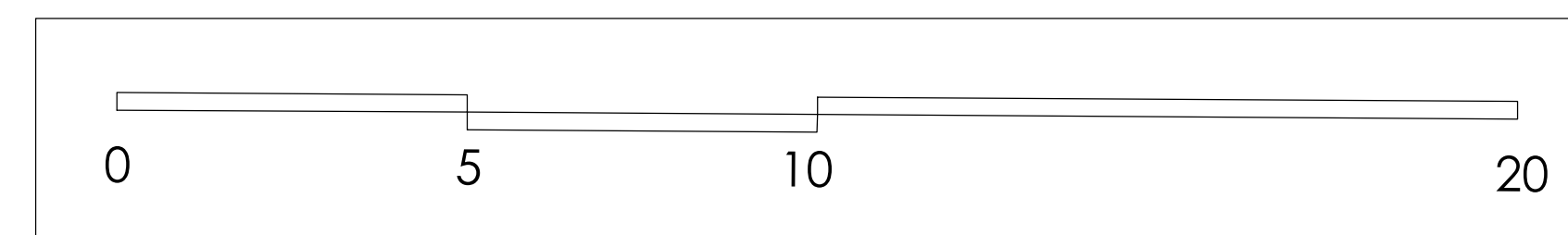
DECIDUOUS TREE PLANTING 1 D-1

DINING TABLE (BY OTHERS)

6 ASHALT PATHWAY WITH UNIT PAVER BORDER D-1  
PICNIC TABLE (BY OTHERS)

4 PRECAST CONCRETE SEATING WALL D-2  
8 STONEDUST D-1

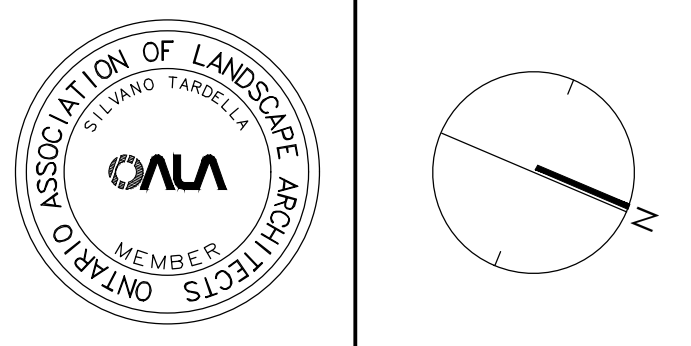
1 AMENITY SPACE LAYOUT



No.	Description	Date
6	Issued for second submission	Dec. 09/22
5	Issued for coordination	Dec. 07/22
4	Issued Amenity Space for Client Review	Oct.25/22
3	Issued for client review	Aug. 24/22
2	Re-issued for First Submission	Dec.21/21
1	Issued for First Submission	Dec.10/21

Revision

City Approval Stamp



**NAK** design strategies  
 1285 WELLINGTON STREET, OTTAWA, ON K1Y 3A8 CANADA  
 T 613.237.2345 F 613.237.6423 NAKDESIGNSTRATEGIES.COM

Project  
**MATTAMY HOMES**  
**DECOEUR DRIVE**  
 2370 TENTH LINE ROAD

Title  
 DETAIL AMENITY AREA

Date DEC 2022  
 Scale 1:100  
 Drawn SH  
 CheckedDC  
 Job No. 21-165

Sheet  
**D3**