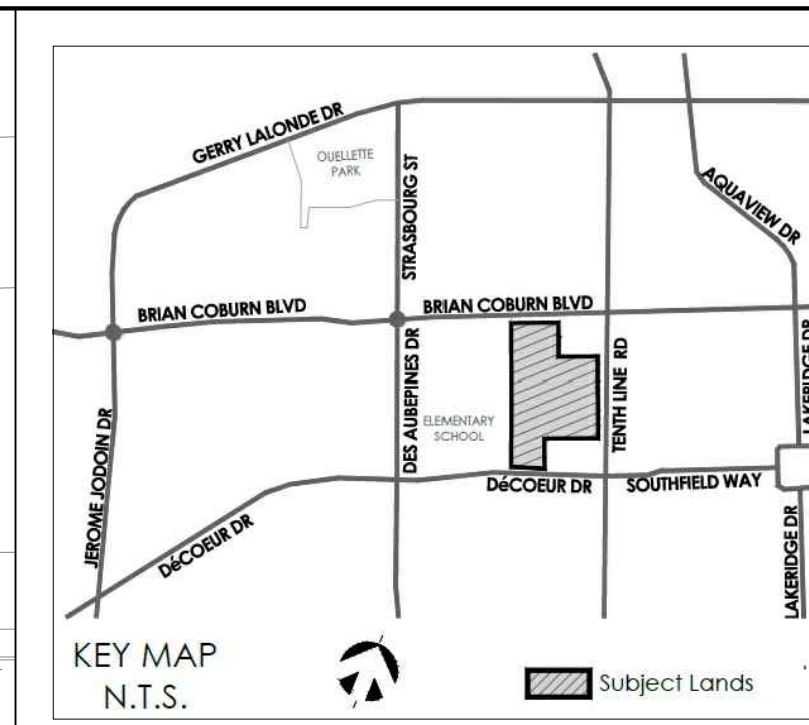




Copyright Reserved

The Contractor shall verify and be responsible for all dimensions. DO NOT scale the drawing - any errors or omissions shall be reported to Stantec without delay.  
The Copyrights to all designs and drawings are the property of Stantec. Reproduction or use for any purpose other than that authorized by Stantec is forbidden.



Legend

- R100A** — SANITARY DRAINAGE AREA ID#
- 0.31 | 50** — POPULATION COUNT
- SANITARY DRAINAGE AREA ha.
- G100A** — SANITARY DRAINAGE AREA ID#
- 0.11 | INFL** — INFILTRATION RATE OF 0.33 L/s/Hg APPLIED
- SANITARY DRAINAGE AREA ha.
- SANITARY DRAINAGE AREA
- — PROPOSED SANITARY MH AND SEWER
- — EXISTING SANITARY MH AND SEWER

Notes

Revision	By	Appd.	YY.MM.DD
0			

File Name:	MJS	DT	MJS	21.12.13
160401710DB				

Permit-Seal

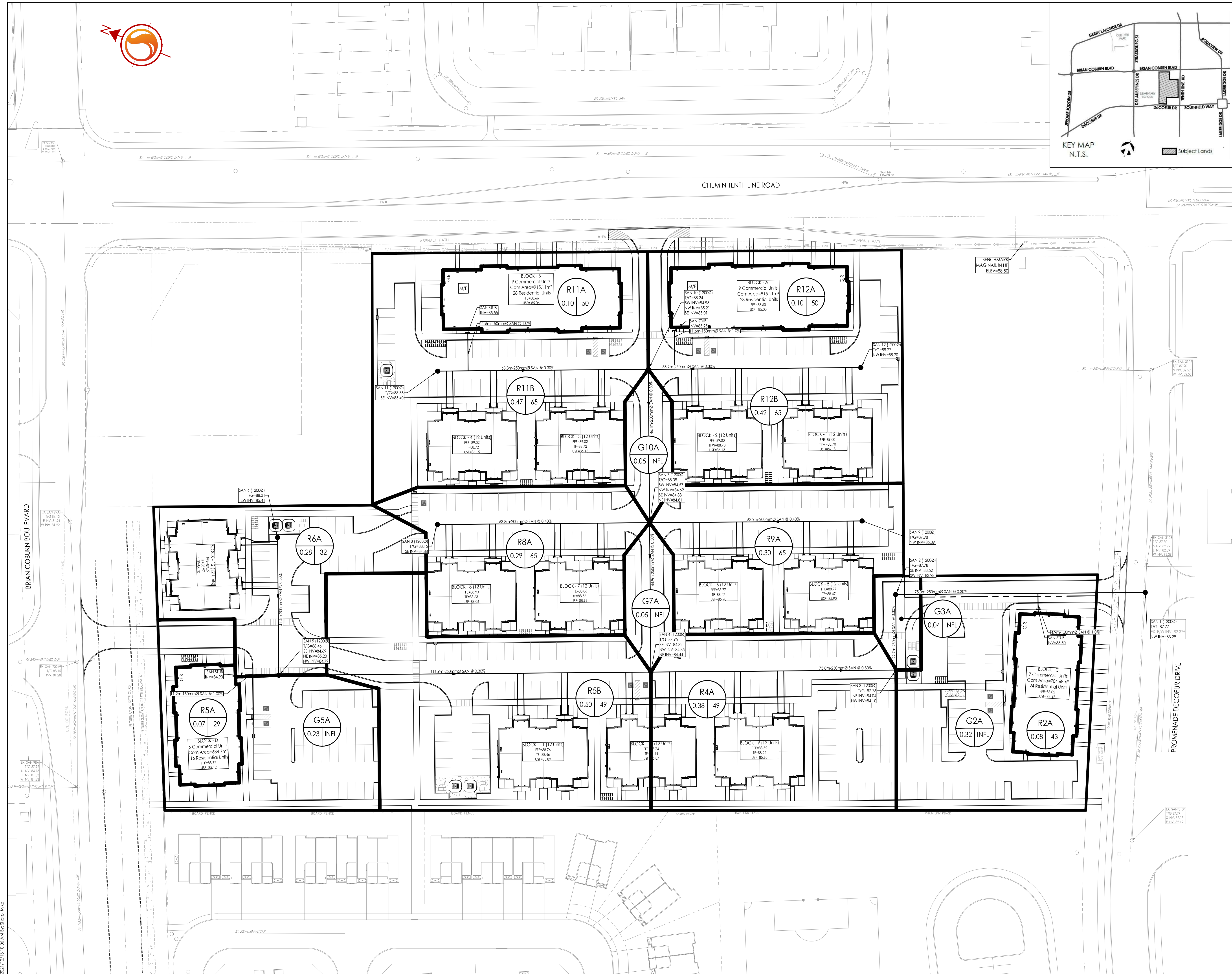
Client/Project  
**MATTAMY HOMES LTD.**

**ORLEANS DECOEUR RESIDENTIAL DEVELOPMENT**  
2370 TENTH LINE ROAD  
OTTAWA, ON, CANADA

Title  
**SANITARY DRAINAGE AREA PLAN**

Project No. 160401710	Scale 1:500	Sheet 7 of 7	Revision 0
--------------------------	----------------	-----------------	---------------

SA-1 7 of 7 0



I:\01\160401710\160401710.dwg  
 2021/12/13 10:56 AM  
 ORIGINAL SHEET - ARCH D