

ALL DIMENSIONS ARE GIVEN IN MILLIMETRES UNLESS OTHERWISE INDICATED.  
DO NOT SCALE DRAWINGS.

CONTRACTOR SHALL VERIFY AND CHECK ALL DIMENSIONS AND CONDITIONS ON SITE PRIOR TO STARTING ANY OF THE WORK AND REPORT ANY DISCREPANCY TO THE ARCHITECT AND CONSULTANTS BEFORE PROCEEDING. CONSTRUCTION MUST CONFORM TO ALL APPLICABLE CODES AND REQUIREMENTS OF AUTHORITIES HAVING JURISDICTION PERTAINING TO THIS APPLICATION.

THE ARCHITECT BEARS NO RESPONSIBILITY FOR THE INTERPRETATION OF THESE DOCUMENTS BY THE CONTRACTOR. UPON WRITTEN APPLICATION THE ARCHITECT WILL PROVIDE WRITTEN OR GRAPHIC CLARIFICATION AS SUPPLEMENTARY INFORMATION REGARDING THE INTENT OF THE CONTRACT DOCUMENTS.

LOCATIONS OF EXPOSED MECHANICAL OR ELECTRICAL DEVICES, FITTINGS AND FIXTURES ARE INDICATED ON ARCHITECTURAL DRAWINGS, WHICH SHALL GOVERN OVER THE MECHANICAL AND ELECTRICAL DRAWINGS. THOSE ITEMS NOT CLEARLY LOCATED, TO BE LOCATED AS DIRECTED BY THE ARCHITECT.

NO INVESTIGATION HAS BEEN UNDERTAKEN OR REPORTED ON THIS OFFICE IN REGARDS TO THE ENVIRONMENTAL CONDITIONS OR POLLUTIONS OF THIS SITE.

COPYRIGHT 2005 KOHN ARCHITECTS INC.

COPYRIGHT OF THIS DRAWING AND THE DESIGN INTENT IS RESERVED BY THE ARCHITECT. THE DRAWINGS AND ALL ASSOCIATED DOCUMENTS ARE AN INSTRUMENT OF SERVICE BY KOHN ARCHITECTS INC. THE DRAWINGS AND THE INFORMATION CONTAINED THEREIN MAY NOT BE REPRODUCED IN WHOLE OR IN PART WITHOUT PRIOR WRITTEN PERMISSION OF THE KOHN ARCHITECTS INC.

ALL DRAWINGS ARE THE PROPERTY OF THE ARCHITECT AND MUST BE RETURNED ON REQUEST.

### ISSUE DATES AND DISTRIBUTION LOG

No.	Date	Note
1	12/10/21	ISSUED FOR SPA
2	12/09/22	REISSUED FOR SPA
3	03/24/23	REISSUED FOR SPA
4	06/06/23	REISSUED FOR SPA

### MATERIAL LEGEND

- 1 ARCHITECTURAL BLOCK (WHITE)
- 2 FIBER CEMENT PANEL (MIDNIGHT BLACK)
- 3 SHIP LAP FIBER CEMENT PANEL (WOOD FINISH)
- 4 FIBER CEMENT PANEL (COBBLE STONE)
- 5 WINDOW WALL ALUMINUM (BLACK)
- 6 GLASS SPANDREL (GREY)
- 7 GLASS SPANDREL (DARK GREY)
- 8 CLEAR GLASS
- 9 STEEL CANOPY (BLACK)
- 10 LOUVER (GREY)
- 11 RAILING (BLACK)
- 12 PAINTED STEEL (GREY)

CITY PLAN NUMBER 18688

CITY FILE NO. D07-12-21-0224



Project: **DECOEUR DRIVE**

MATTAMY HOMES

2370 TENTH LINE

OTTAWA ONTARIO

Drawing Title: **EAST AND WEST ELEVATIONS**

Project Manager Team: KB Project No. 21-107

Date Plotted: 2023-06-06 1:34:44 PM Scale As indicated

Building No.: Drawing No.:

**A+B A4 00**

*G. Wildman*  
**GERALDINE WILDMAN**  
ACTING MANAGER, DEVELOPMENT REVIEW, EAST  
PLANNING, REAL ESTATE & ECONOMIC DEVELOPMENT  
DEPARTMENT, CITY OF OTTAWA

**APPROVED**  
By Geraldine Wildman at 6:08 pm, Jul 24, 2023



**BLOCK A WEST ELEVATION/ BLOCK B EAST ELEVATION** 2  
SCALE: 1 : 100 A4 00



**BLOCK A EAST ELEVATION/ BLOCK B WEST ELEVATION** 1  
SCALE: 1 : 100 A4 00

ALL DIMENSIONS ARE GIVEN IN MILLIMETRES UNLESS OTHERWISE INDICATED.  
DO NOT SCALE DRAWINGS.  
CONTRACTOR SHALL VERIFY AND CHECK ALL DIMENSIONS AND CONDITIONS ON SITE PRIOR TO STARTING ANY OF THE WORK AND REPORT ANY DISCREPANCY TO THE ARCHITECT AND CONSULTANTS BEFORE PROCEEDING. CONSTRUCTION MUST CONFORM TO ALL APPLICABLE CODES AND REQUIREMENTS OF AUTHORITIES HAVING JURISDICTION PERTAINING TO THIS APPLICATION.  
THE ARCHITECT BEARS NO RESPONSIBILITY FOR THE INTERPRETATION OF THESE DOCUMENTS BY THE CONTRACTOR. UPON WRITTEN APPLICATION THE ARCHITECT WILL PROVIDE WRITTEN OR GRAPHIC CLARIFICATION AS SUPPLEMENTARY INFORMATION REGARDING THE INTENT OF THE CONTRACT DOCUMENTS.  
LOCATIONS OF EXPOSED MECHANICAL OR ELECTRICAL DEVICES, FITTINGS AND FIXTURES ARE INDICATED ON ARCHITECTURAL DRAWINGS, WHICH SHALL GOVERN OVER THE MECHANICAL AND ELECTRICAL DRAWINGS. THOSE ITEMS NOT CLEARLY LOCATED, TO BE LOCATED AS DIRECTED BY THE ARCHITECT.  
NO INVESTIGATION HAS BEEN UNDERTAKEN OR REPORTED ON THIS OFFICE IN REGARDS TO THE ENVIRONMENTAL CONDITIONS OR POLLUTIONS OF THIS SITE.  
COPYRIGHT 2005 KOHN ARCHITECTS INC.  
COPYRIGHT OF THIS DRAWING AND THE DESIGN INTENT IS RESERVED BY THE ARCHITECT. THE DRAWINGS AND ALL ASSOCIATED DOCUMENTS ARE AN INSTRUMENT OF SERVICE BY KOHN ARCHITECTS INC. THE DRAWINGS AND THE INFORMATION CONTAINED THEREIN MAY NOT BE REPRODUCED IN WHOLE OR IN PART WITHOUT PRIOR WRITTEN PERMISSION OF THE KOHN ARCHITECTS INC.  
ALL DRAWINGS ARE THE PROPERTY OF THE ARCHITECT AND MUST BE RETURNED ON REQUEST.

### ISSUE DATES AND DISTRIBUTION LOG

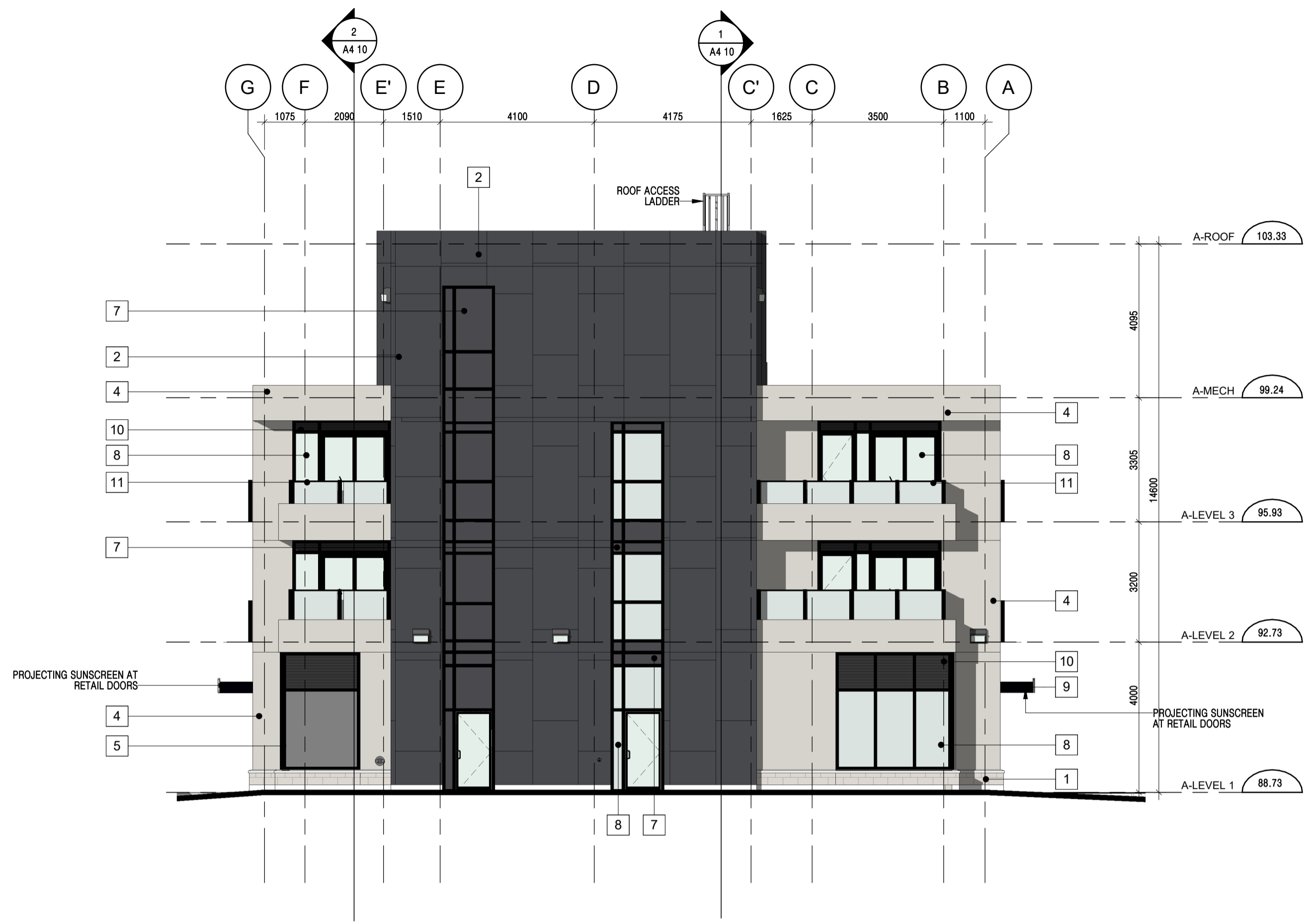
No.	Date	Note
1	12/10/21	ISSUED FOR SPA
2	12/09/22	REISSUED FOR SPA
3	03/24/23	REISSUED FOR SPA
4	06/06/23	REISSUED FOR SPA

### MATERIAL LEGEND

- 1 ARCHITECTURAL BLOCK (WHITE)
- 2 FIBER CEMENT PANEL (MIDNIGHT BLACK)
- 3 SHIP LAP FIBER CEMENT PANEL (WOOD FINISH)
- 4 FIBER CEMENT PANEL (COBBLE STONE)
- 5 WINDOW WALL ALUMINUM (BLACK)
- 6 GLASS SPANDREL (GREY)
- 7 GLASS SPANDREL (DARK GREY)
- 8 CLEAR GLASS
- 9 STEEL CANOPY (BLACK)
- 10 LOUVER (GREY)
- 11 RAILING (BLACK)
- 12 PAINTED STEEL (GREY)

*G. Wildman*  
**GERALDINE WILDMAN**  
ACTING MANAGER, DEVELOPMENT REVIEW, EAST PLANNING, REAL ESTATE & ECONOMIC DEVELOPMENT DEPARTMENT, CITY OF OTTAWA

**APPROVED**  
By Geraldine Wildman at 6:09 pm, Jul 24, 2023



**BLOCK A NORTH ELEVATION/ BLOCK B SOUTH ELEVATION** 1  
SCALE: 1 : 100 A4 01



**BLOCK A SOUTH ELEVATION/ BLOCK B NORTH ELEVATION** 2  
SCALE: 1 : 100 A4 01

CITY PLAN NUMBER 18688

CITY FILE NO. D07-12-21-0224



Project:  
**DECOEUR DRIVE**

MATTAMY HOMES  
2370 TENTH LINE

OTTAWA ONTARIO

Drawing Title:  
**NORTH AND SOUTH ELEVATIONS**

Project Manager Team: KB Project No. 21-107

Date Plotted: 2023-06-06 1:34:50 PM Scale As indicated

Building No.: Drawing No.:

**A+B A4 01**



ALL DIMENSIONS ARE GIVEN IN MILLIMETRES UNLESS OTHERWISE INDICATED.  
DO NOT SCALE DRAWINGS.  
CONTRACTOR SHALL VERIFY AND CHECK ALL DIMENSIONS AND CONDITIONS ON SITE PRIOR TO STARTING ANY OF THE WORK AND REPORT ANY DISCREPANCY TO THE ARCHITECT AND CONSULTANTS BEFORE PROCEEDING. CONSTRUCTION MUST CONFORM TO ALL APPLICABLE CODES AND REQUIREMENTS OF AUTHORITIES HAVING JURISDICTION PERTAINING TO THIS APPLICATION.

THE ARCHITECT BEARS NO RESPONSIBILITY FOR THE INTERPRETATION OF THESE DOCUMENTS BY THE CONTRACTOR. UPON WRITTEN APPLICATION THE ARCHITECT WILL PROVIDE WRITTEN OR GRAPHIC CLARIFICATION AS SUPPLEMENTARY INFORMATION REGARDING THE INTENT OF THE CONTRACT DOCUMENTS.

LOCATIONS OF EXPOSED MECHANICAL OR ELECTRICAL DEVICES, FITTINGS AND FIXTURES ARE INDICATED ON ARCHITECTURAL DRAWINGS, WHICH SHALL GOVERN OVER THE MECHANICAL AND ELECTRICAL DRAWINGS. THOSE ITEMS NOT CLEARLY LOCATED, TO BE LOCATED AS DIRECTED BY THE ARCHITECT.

NO INVESTIGATION HAS BEEN UNDERTAKEN OR REPORTED ON THIS OFFICE IN REGARDS TO THE ENVIRONMENTAL CONDITIONS OR POLLUTIONS OF THIS SITE.  
COPYRIGHT 2006 KOHN ARCHITECTS INC.  
COPYRIGHT OF THIS DRAWING AND THE DESIGN INTENT IS RESERVED BY THE ARCHITECT. THE DRAWINGS AND ALL ASSOCIATED DOCUMENTS ARE AN INSTRUMENT OF SERVICE BY KOHN ARCHITECTS INC. THE DRAWINGS AND THE INFORMATION CONTAINED THEREIN MAY NOT BE REPRODUCED IN WHOLE OR IN PART WITHOUT PRIOR WRITTEN PERMISSION OF THE KOHN ARCHITECTS INC.

ALL DRAWINGS ARE THE PROPERTY OF THE ARCHITECT AND MUST BE RETURNED ON REQUEST.

### ISSUE DATES AND DISTRIBUTION LOG

No.	Date	Note
1	12/10/21	ISSUED FOR SPA
2	12/09/22	REISSUED FOR SPA
3	03/24/23	REISSUED FOR SPA
4	06/06/23	REISSUED FOR SPA

### MATERIAL LEGEND

- 1 ARCHITECTURAL BLOCK (WHITE)
- 2 FIBER CEMENT PANEL (MIDNIGHT BLACK)
- 3 SHIP LAP FIBER CEMENT PANEL (WOOD FINISH)
- 4 FIBER CEMENT PANEL (COBBLE STONE)
- 5 WINDOW WALL ALUMINUM (BLACK)
- 6 GLASS SPANDREL (GREY)
- 7 GLASS SPANDREL (DARK GREY)
- 8 CLEAR GLASS
- 9 STEEL CANOPY (BLACK)
- 10 LOUVER (GREY)
- 11 RAILING (BLACK)
- 12 PAINTED STEEL (GREY)

CITY PLAN NUMBER 18688

CITY FILE NO. D07-12-21-0224



Project: **DECOEUR DRIVE**

MATTAMY HOMES  
2370 TENTH LINE

OTTAWA ONTARIO

Drawing Title:  
**BLOCK C NORTH AND SOUTH ELEVATIONS**

Project Manager Team: KB Project No. 21-107

Date Plotted: 2023-06-06 1:34:56 PM Scale As indicated

Building No.: Drawing No.:

**C A4 02**

*G Wildman*  
**GERALDINE WILDMAN**  
**ACTING MANAGER, DEVELOPMENT REVIEW, EAST PLANNING, REAL ESTATE & ECONOMIC DEVELOPMENT DEPARTMENT, CITY OF OTTAWA**

**APPROVED**  
By Geraldine Wildman at 6:09 pm, Jul 24, 2023



**BLOCK C NORTH ELEVATION FACING BRIAN COBURN BLVD** 1  
SCALE: 1 : 100 A4 02



**BLOCK C SOUTH ELEVATION FACING PROMENADE DECOEUR DR** 2  
SCALE: 1 : 100 A4 02

ALL DIMENSIONS ARE GIVEN IN MILLIMETRES UNLESS OTHERWISE INDICATED.  
DO NOT SCALE DRAWINGS.

CONTRACTOR SHALL VERIFY AND CHECK ALL DIMENSIONS AND CONDITIONS ON SITE PRIOR TO STARTING ANY OF THE WORK AND REPORT ANY DISCREPANCY TO THE ARCHITECT AND CONSULTANTS BEFORE PROCEEDING. CONSTRUCTION MUST CONFORM TO ALL APPLICABLE CODES AND REQUIREMENTS OF AUTHORITIES HAVING JURISDICTION PERTAINING TO THIS APPLICATION.

THE ARCHITECT BEARS NO RESPONSIBILITY FOR THE INTERPRETATION OF THESE DOCUMENTS BY THE CONTRACTOR. UPON WRITTEN APPLICATION THE ARCHITECT WILL PROVIDE WRITTEN OR GRAPHIC CLARIFICATION AS SUPPLEMENTARY INFORMATION REGARDING THE INTENT OF THE CONTRACT DOCUMENTS.

LOCATIONS OF EXPOSED MECHANICAL OR ELECTRICAL DEVICES, FITTINGS AND FIXTURES ARE INDICATED ON ARCHITECTURAL DRAWINGS, WHICH SHALL GOVERN OVER THE MECHANICAL AND ELECTRICAL DRAWINGS. THOSE ITEMS NOT CLEARLY LOCATED, TO BE LOCATED AS DIRECTED BY THE ARCHITECT.

NO INVESTIGATION HAS BEEN UNDERTAKEN OR REPORTED ON THIS OFFICE IN REGARDS TO THE ENVIRONMENTAL CONDITIONS OR POLLUTIONS OF THIS SITE.

COPYRIGHT 2006 KOHN ARCHITECTS INC.

COPYRIGHT OF THIS DRAWING AND THE DESIGN INTENT IS RESERVED BY THE ARCHITECT. THE DRAWINGS AND ALL ASSOCIATED DOCUMENTS ARE AN INSTRUMENT OF SERVICE BY KOHN ARCHITECTS INC. THE DRAWINGS AND THE INFORMATION CONTAINED THEREIN MAY NOT BE REPRODUCED IN WHOLE OR IN PART WITHOUT PRIOR WRITTEN PERMISSION OF THE KOHN ARCHITECTS INC.

ALL DRAWINGS ARE THE PROPERTY OF THE ARCHITECT AND MUST BE RETURNED ON REQUEST.

#### ISSUE DATES AND DISTRIBUTION LOG

No.	Date	Note
1	12/10/21	ISSUED FOR SPA
2	12/09/22	REISSUED FOR SPA
3	03/24/23	REISSUED FOR SPA
4	06/06/23	REISSUED FOR SPA

#### MATERIAL LEGEND

- 1 ARCHITECTURAL BLOCK (WHITE)
- 2 FIBER CEMENT PANEL (MIDNIGHT BLACK)
- 3 SHIP LAP FIBER CEMENT PANEL (WOOD FINISH)
- 4 FIBER CEMENT PANEL (COBBLE STONE)
- 5 WINDOW WALL ALUMINUM (BLACK)
- 6 GLASS SPANDREL (GREY)
- 7 GLASS SPANDREL (DARK GREY)
- 8 CLEAR GLASS
- 9 STEEL CANOPY (BLACK)
- 10 LOUVER (GREY)
- 11 RAILING (BLACK)
- 12 PAINTED STEEL (GREY)



*G. Wildman*

**GERALDINE WILDMAN**  
ACTING MANAGER, DEVELOPMENT REVIEW, EAST  
PLANNING, REAL ESTATE & ECONOMIC DEVELOPMENT  
DEPARTMENT, CITY OF OTTAWA

**APPROVED**  
By Geraldine Wildman at 6:09 pm, Jul 24, 2023

BLOCK C EAST ELEVATION FACING TENTH LINE RD 1  
SCALE: 1 : 100 A4 03



BLOCK C WEST ELEVATION FACING TH 27 2  
SCALE: 1 : 100 A4 03

CITY PLAN NUMBER 18688

CITY FILE NO. D07-12-21-0224



Project:  
**DECOEUR DRIVE**

MATTAMY HOMES  
2370 TENTH LINE

OTTAWA ONTARIO

Drawing Title:  
**BLOCK C WEST AND EAST ELEVATIONS**

Project Manager Team: KB Project No: 21-107

Date Plotted: 2023-06-06 1:35:01 PM Scale: As indicated

Building No.: Drawing No.:

C A4 03