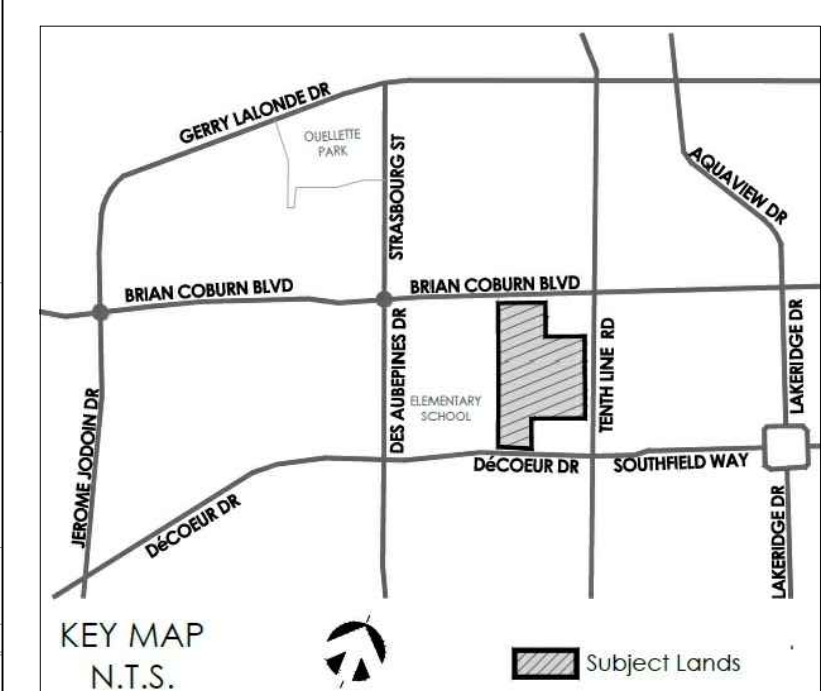
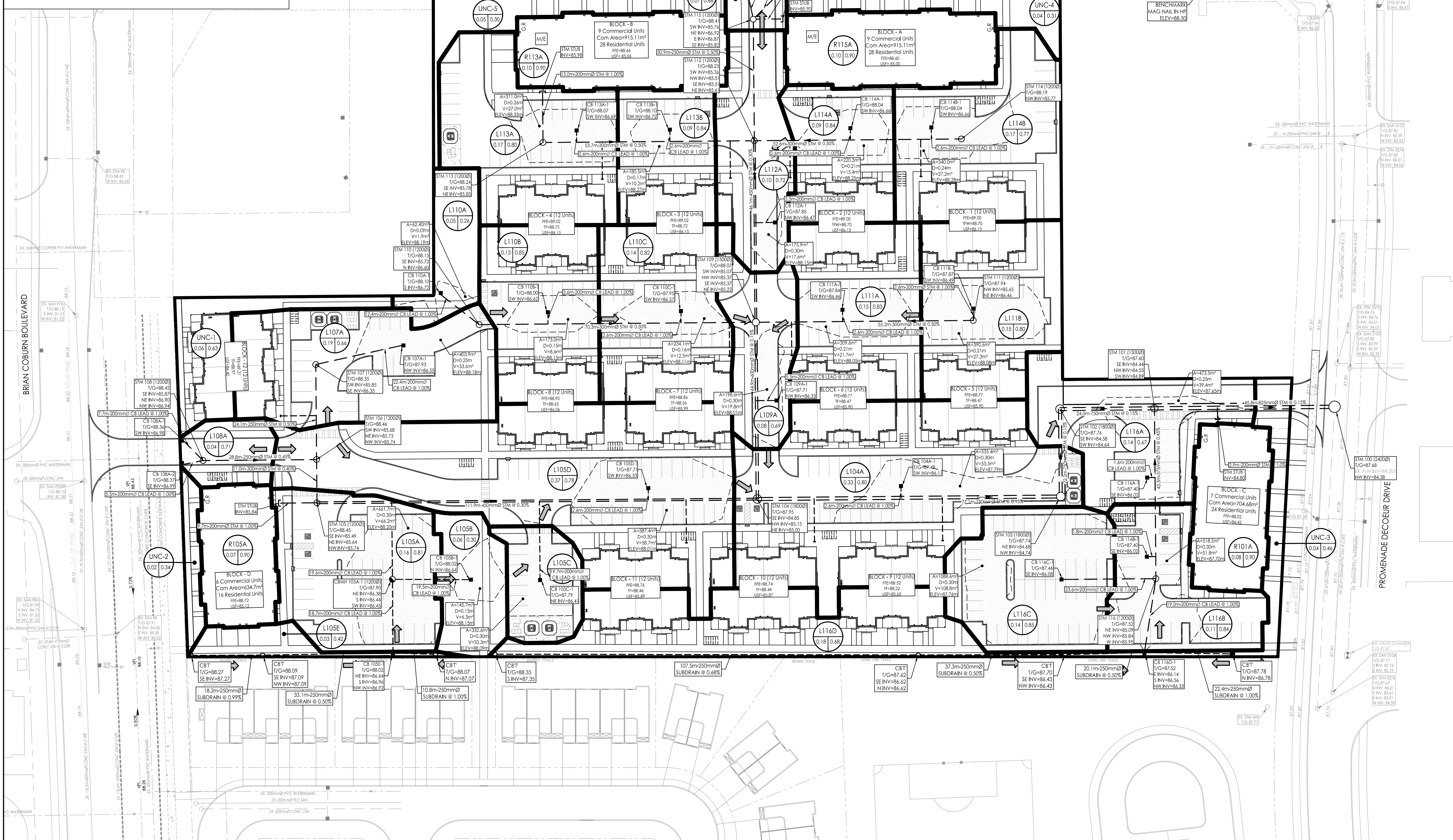


SCHEDULE OF ROOF RELEASE RATES						
DRAIN TYPE	TRIBUTARY AREA ID	# OF DRAINS	100YR HEAD (m)	100YR RELEASE RATE (L/s)	100YR PONDING VOLUME (REQ'D) (m³)	100YR PONDING VOLUME (PROV'D) (m³)
WATS ACCUFLOW (25% OPEN)	ROOF 101A	4	0.15	3.77	31.4	32.0
WATS ACCUFLOW (25% OPEN)	ROOF 105A	4	0.15	3.74	26.1	28.0
WATS ACCUFLOW (25% OPEN)	ROOF 113A	5	0.15	4.71	39.2	40.0
WATS ACCUFLOW (25% OPEN)	ROOF 115A	5	0.15	4.71	39.2	40.0

ICD TABLE						
CATCH-BASIN ID	TRIBUTARY AREA ID	ICD TYPE	SYR HEAD (m)	100YR HEAD (m)	SYR FLOW (L/s)	100YR FLOW (L/s)
CB L105A	L105A	108mm HF ORIFICE	1.52	1.82	28.62	31.31
CB L105B	L105B	83mm HF ORIFICE	1.38	1.51	6.71	7.02
CB L105C	L105C	LMF 90	1.38	1.68	8.44	9.31
CB L105D	L105D	178 HF ORIFICE	1.38	1.68	74.07	81.72
CB L105E	L105E	N/A	1.38	1.38	3.65	7.82
CB L104A	L104A	178mm HF ORIFICE	1.38	1.68	74.07	81.72
CB L107A	L107A	108mm HF ORIFICE	1.38	1.63	27.27	29.63
CB L108A	L108A	N/A	1.38	1.38	8.23	17.62
CB L109A	L109A	83mm HF ORIFICE	1.38	1.68	16.10	17.77
CB L110A	L110A	LMF 70	1.38	1.47	5.06	5.22
CB L110B	L110B	152mm HF ORIFICE	1.36	1.51	53.62	56.50
CB L110C	L110C	152mm HF ORIFICE	1.38	1.54	54.01	57.05
CB L111A	L111A	127mm HF ORIFICE	1.37	1.58	37.57	40.34
CB L111B	L111B	108mm HF ORIFICE	1.37	1.58	27.17	29.18
CB L112A	L112A	83mm HF ORIFICE	1.38	1.68	16.10	17.77
CB L113A	L113A	127mm HF ORIFICE	1.38	1.64	37.70	41.10
CB L113B	L113B	108mm HF ORIFICE	1.36	1.53	27.07	28.71
CB L114A	L114A	102mm HF ORIFICE	1.38	1.59	24.32	26.11
CB L114B	L114B	127mm HF ORIFICE	1.38	1.59	37.70	40.47
CB L115A	L115A	N/A	1.38	1.38	1.97	4.22
CB L116A	L116A	95mm HF ORIFICE	1.38	1.63	21.10	22.93
CB L116B	L116B	95mm HF ORIFICE	1.38	1.68	21.10	23.28
CB L116C	L116C	152mm HF ORIFICE	1.38	1.68	54.01	59.59
CB L116D	L116D	152mm HF ORIFICE	1.38	1.38	54.01	59.59



Stantec Consulting Ltd.  
 400 - 1331 Clyde Avenue  
 Ottawa ON  
 Tel. 613.722.4420  
 www.stantec.com

Copyright Reserved  
 The Contractor shall verify and be responsible for all dimensions. DO NOT scale the drawing - any errors or omissions shall be reported to Stantec without delay.  
 The Copyrights to all designs and drawings are the property of Stantec. Reproduction or use for any purpose other than that authorized by Stantec is forbidden.

- Legend**
- AREA ID
  - RUNOFF COEFFICIENT
  - STORM DRAINAGE AREA ID.
  - STORM DRAINAGE BOUNDARY.
  - DIRECTION OF OVERLAND FLOW
  - DIRECTION OF EMERGENCY OVERLAND FLOW
  - PROPOSED STORM MH AND SEWER
  - PROPOSED CATCH-BASIN
  - PROPOSED WATS FD-530 (OR EQUIVALENT) TO BE CONNECTED TO INTERNAL STORM SEWER PLUMBING.
  - EXISTING STORM MH AND SEWER
  - EXISTING CATCH-BASIN
  - THERMAL INSULATION ON STORM SEWER WHERE COVER IS LESS THAN 1.5m. THERMAL INSULATION ON WATERMAIN WHERE COVER IS LESS THAN 2.4m AS PER W22.
  - MAXIMUM STATIC PONDING LIMITS

**Notes**

Revision	By	Date
0	ISSUED FOR SPA	MJS DT 21.12.13

Permit-Seal	File Name:	MJS	DT	MJS	DT	21.12.22
	160401710D	Dwn.	Chkd.	Dgn.	YY.MM.DD	

Client/Project  
**MATTAMY HOMES LTD.**  
 ORLEANS DECOEUR RESIDENTIAL DEVELOPMENT  
 2370 TENTH LINE ROAD  
 OTTAWA, ON, CANADA

Title  
**STORM DRAINAGE AREA PLAN**

Project No. 160401710	Scale 1:500	Sheet 6 of 7	Revision 0
--------------------------	----------------	-----------------	---------------

SD-1