



The contractor / builder must verify all dimensions on the job and report any discrepancy to the designer before proceeding with the work.
Drawings are NOT to be scaled. All drawings and specifications are instruments of service and the copyright property of the designer and must be returned upon request.

Q4 Architects Inc. retains the copyright in all drawings, plans, sketches, and all digital information. They may not be copied or used for any other projects or purposes or distributed without the written consent of Q4 Architects Inc.

THESE DRAWINGS MUST BE READ IN CONJUNCTION WITH - CONSTRUCTION DETAILS: D0 TO D16 - CONSTRUCTION NOTES: CN-1 & CN-2

THESE DRAWINGS MUST BE READ IN CONJUNCTION WITH STRUCTURAL DRAWINGS BY ATA ENGINEERING INC. - S-01 TO S-07

4	ISSUED FOR PERMIT	2021.08.13	SDW
3	REVISED AS PER COMMENTS	2021.05.21	SDW
2	REVISED AS PER COMMENTS	2021.05.21	SDW
1	PH. 3 DESIGN CHANGES ISSUED FOR REVIEW	2021.04.19	SDW

Issued / Revision Chart

SOUTH NEPEAN TOWN CENTRE PROMENADE PH. 3

AST MASTER BLOCK ELEV. 'TN'

OTTAWA, ONTARIO

MATTAMY HOMES

Project No.
Scale **3/16" = 1'-0"**
Drawn By **SDW**
Checked By **PM**

FRONT ELEVATION

MATERIAL LEGEND	
C100	POURED CONC. FOUNDATION WALLS AND FOOTINGS (TYP)
C101	POURED CONC. PORCH SLAB W/ INSET STEPS IF REQUIRED.
C102	MARBLE DOOR SILL
C103	PRECAST CONC. STEP
E100	FIBER-CEMENT LAP SIDING
E101	FIBER-CEMENT BOARD & BATTEN - SMOOTH PANEL W/ 1"X2" BATTERS @ 8" O.C.
E102	FIBER-CEMENT SHAKES W/ STRAIGHT EDGE
E103	SMOOTH FIBER-CEMENT PANEL (REFER TO SCOPE OF WORK)
E104	STUCCO TEXTURED FIBER-CEMENT PANEL (REFER TO SCOPE OF WORK)
E200	HORIZONTAL VINYL SIDING (TYP.)
E201	BOARD & BATTEN VINYL SIDING
E202	VINYL SHAKES
E203	SCALLOPED FISH SCALE) VINYL SIDING
E300	FACE BRICK (TYP.)
E301	STONE VENEER (TYP.)
E302	BRICK HERRINGBONE PATTERN (TYP.)
E303	SMOOTH CHAMFERED STONE VENEER (TYP.)
E400	STUCCO E.I.F.S. (EXTERIOR INSULATED FINISH SYSTEM)
E401	HIGH IMPACT STUCCO E.I.F.S. (LOCATE AS PER SCOPE OF WORK)
E402	NON-COMBUSTIBLE STUCCO E.I.F.S. (TYP.)
E500	PVC PANEL (TYP.)
E600	APPROVED PANEL SYSTEM - AL13 OR EQUAL (TYP.)
E700	LAMINATE PANEL SYSTEM - TRESPA OR EQUAL (TYP.)
R100	ASPHALT SHINGLES (TYP.)
R101	METAL VALLEY FLASHING (TO MATCH)
R102	METAL FLASHING W/ CAULKING (TO MATCH)
R103	PREFIN. ALUM. FASCIA, VENTED SOFFIT, GUTTER & DOWNSPOUTS
R104	SCUPPER
R105	LOW SLOPE ROOF SHINGLE APPLICATION
R106	ICE & WATER SHIELD
R107	METAL CAP FLASHING
R108	METAL BEAM ROOF
R109	13 GAUGE ALUM. CLAD CANOPY (AL13)
R110	PREFINISHED METAL CANOPY ROOF W/ DECORATIVE STEEL COLUMN SUPPORTS
R111	METAL FLASHING (EXTEND 6" BENEATH CLADDING) (TO MATCH)
R112	ARTS & CRAFTS SOFFIT (SEE DETAIL)
R113	CURVED SOFFIT (SEE DETAIL)
A100	DECORATIVE BRACKET (SEE DETAIL)
A101	DECORATIVE FEATURE (SEE DETAIL)
A102	DECORATIVE PTD. PVC OR VINYL LOUVER OR EQUAL (SEE DETAIL)
A103	DECORATIVE PTD. PVC OR VINYL RAISED PANEL SHUTTERS OR EQUAL (SEE DETAIL)
A104	DECORATIVE PTD. PVC OR VINYL LOUVERED SHUTTERS OR EQUAL (SEE DETAIL)
A105	DECORATIVE PTD. PVC OR VINYL BOARD & BATTEN SHUTTERS W/ OPEN WEAVE (SEE DETAIL)
A106	DECORATIVE PTD. PVC OR VINYL BOARD & BATTEN SHUTTERS W/ CLOSED WEAVE (SEE DETAIL)
A107	DECORATIVE GABLE DETAIL (SEE DETAIL)
A108	DECORATIVE BLACK GLASS WINDOW
M100	VINYL RAILING INSTALLED TO COMPLY W/ O.B.C. 8.7 & 8.8 & SB-7 (REFER TO SCOPE OF WORK)
M101	ALUMINUM RAILINGS INSTALLED TO COMPLY W/ O.B.C. 8.7 & 8.8 & SB-7 (REFER TO SCOPE OF WORK)
M102	GLASS RAILING INSTALLED TO COMPLY W/ O.B.C. 2.1.1 & SB-13 (REFER TO SCOPE OF WORK)
M103	DECORATIVE WROUGHT IRON RAILING (REFER TO SCOPE OF WORK)
M104	EXTERIOR VENT
M105	PRIVACY SCREEN (REFER TO SCOPE OF WORK)
M106	PRESSURE TREATED WOOD DECK
M107	FIBERGLASS INSECT SCREENING - OR EQUIV.
M108	STAINED WOOD
M109	PVC OR FIBERGLASS TRELLIS (SEE DETAIL)
M110	CONTROL JOINT
M111	PROJECTED BOX-OUT (SEE DETAIL)
P100	SQUARE TAPERED COLUMN (SEE DETAIL) OR EQUIV.
P101	SQUARE RECESSED PANEL COLUMN (SEE DETAIL)
P102	MASONRY PORCH PIER (SEE DETAIL)
P103	PORCH PIER W/ TRIMMED PANELS (SEE DETAIL)
P104	SQUARE VINYL OR FIBERGLASS COLUMN
P105	ROUND VINYL OR FIBERGLASS COLUMN
T320	SELF SUPPORTING PRECAST ARCH W/ 1/2" PROJECTION
T321	BUILT-UP PRECAST HEADER TRIM (SEE DETAIL)
T322	PRECAST CONCRETE KEYSTONE
T323	DOUBLE PRECAST CONCRETE KEYSTONE
T324	STONE / PRECAST CONCRETE IMPOST
T400	DECOR. STUCCO TRIM (SEE DETAIL)
T401	DECOR. STUCCO FRIEZE BOARD (SEE DETAIL)
T402	DECOR. STUCCO KEYSTONE (SEE DETAIL)
T403	DECOR. STUCCO TRANSITION BAND (SEE DETAIL)
T404	DECOR. STUCCO HEADER TRIM (SEE DETAIL)
T405	DECOR. STUCCO SILL TRIM (SEE DETAIL)
T406	DECOR. STUCCO TRIM SURROUND (SEE DETAIL)
T407	BUILT-UP DECOR. STUCCO HEADER TRIM (SEE DETAIL)
T408	DECOR. STUCCO PORCH BEAM
T409	STUCCO FRIEZE BOARD
T410	STUCCO TRIM
T411	STUCCO HEADER TRIM
T412	STUCCO SILL TRIM
T500	CONCRETE (C)
T501	TRIM & SURROUND CONTINUED (C)
T502	CONCRETE (C)
T503	CONCRETE (C)
T504	CONCRETE (C)
T505	CONCRETE (C)
T506	CONCRETE (C)
T507	CONCRETE (C)
T508	CONCRETE (C)
T509	CONCRETE (C)
T510	CONCRETE (C)
T511	CONCRETE (C)
T512	CONCRETE (C)
T513	CONCRETE (C)
T514	CONCRETE (C)
T515	CONCRETE (C)
T516	CONCRETE (C)
T517	CONCRETE (C)
T518	CONCRETE (C)
T519	CONCRETE (C)
T520	CONCRETE (C)
T521	CONCRETE (C)
T522	CONCRETE (C)
T523	CONCRETE (C)
T524	CONCRETE (C)
T525	CONCRETE (C)
T526	CONCRETE (C)
T527	CONCRETE (C)
T528	CONCRETE (C)
T529	CONCRETE (C)
T530	CONCRETE (C)
T531	CONCRETE (C)
T532	CONCRETE (C)
T533	CONCRETE (C)
T534	CONCRETE (C)
T535	CONCRETE (C)
T536	CONCRETE (C)
T537	CONCRETE (C)
T538	CONCRETE (C)
T539	CONCRETE (C)
T540	CONCRETE (C)
T541	CONCRETE (C)
T542	CONCRETE (C)
T543	CONCRETE (C)
T544	CONCRETE (C)
T545	CONCRETE (C)
T546	CONCRETE (C)
T547	CONCRETE (C)
T548	CONCRETE (C)
T549	CONCRETE (C)
T550	CONCRETE (C)
T551	CONCRETE (C)
T552	CONCRETE (C)
T553	CONCRETE (C)
T554	CONCRETE (C)
T555	CONCRETE (C)
T556	CONCRETE (C)
T557	CONCRETE (C)
T558	CONCRETE (C)
T559	CONCRETE (C)
T560	CONCRETE (C)
T561	CONCRETE (C)
T562	CONCRETE (C)
T563	CONCRETE (C)
T564	CONCRETE (C)
T565	CONCRETE (C)
T566	CONCRETE (C)
T567	CONCRETE (C)
T568	CONCRETE (C)
T569	CONCRETE (C)
T570	CONCRETE (C)
T571	CONCRETE (C)
T572	CONCRETE (C)
T573	CONCRETE (C)
T574	CONCRETE (C)
T575	CONCRETE (C)
T576	CONCRETE (C)
T577	CONCRETE (C)
T578	CONCRETE (C)
T579	CONCRETE (C)
T580	CONCRETE (C)
T581	CONCRETE (C)
T582	CONCRETE (C)
T583	CONCRETE (C)
T584	CONCRETE (C)
T585	CONCRETE (C)
T586	CONCRETE (C)
T587	CONCRETE (C)
T588	CONCRETE (C)
T589	CONCRETE (C)
T590	CONCRETE (C)
T591	CONCRETE (C)
T592	CONCRETE (C)
T593	CONCRETE (C)
T594	CONCRETE (C)
T595	CONCRETE (C)
T596	CONCRETE (C)
T597	CONCRETE (C)
T598	CONCRETE (C)
T599	CONCRETE (C)
T600	CONCRETE (C)
T601	CONCRETE (C)
T602	CONCRETE (C)
T603	CONCRETE (C)
T604	CONCRETE (C)
T605	CONCRETE (C)
T606	CONCRETE (C)
T607	CONCRETE (C)
T608	CONCRETE (C)
T609	CONCRETE (C)
T610	CONCRETE (C)
T611	CONCRETE (C)
T612	CONCRETE (C)
T613	CONCRETE (C)
T614	CONCRETE (C)
T615	CONCRETE (C)
T616	CONCRETE (C)
T617	CONCRETE (C)
T618	CONCRETE (C)
T619	CONCRETE (C)
T620	CONCRETE (C)
T621	CONCRETE (C)
T622	CONCRETE (C)
T623	CONCRETE (C)
T624	CONCRETE (C)
T625	CONCRETE (C)
T626	CONCRETE (C)
T627	CONCRETE (C)
T628	CONCRETE (C)
T629	CONCRETE (C)
T630	CONCRETE (C)
T631	CONCRETE (C)
T632	CONCRETE (C)
T633	CONCRETE (C)
T634	CONCRETE (C)
T635	CONCRETE (C)
T636	CONCRETE (C)
T637	CONCRETE (C)
T638	CONCRETE (C)
T639	CONCRETE (C)
T640	CONCRETE (C)
T641	CONCRETE (C)
T642	CONCRETE (C)
T643	CONCRETE (C)
T644	CONCRETE (C)
T645	CONCRETE (C)
T646	CONCRETE (C)
T647	CONCRETE (C)
T648	CONCRETE (C)
T649	CONCRETE (C)
T650	CONCRETE (C)
T651	CONCRETE (C)
T652	CONCRETE (C)
T653	CONCRETE (C)
T654	CONCRETE (C)
T655	CONCRETE (C)
T656	CONCRETE (C)
T657	CONCRETE (C)
T658	CONCRETE (C)
T659	CONCRETE (C)
T660	CONCRETE (C)
T661	CONCRETE (C)
T662	CONCRETE (C)
T663	CONCRETE (C)
T664	CONCRETE (C)
T665	CONCRETE (C)
T666	CONCRETE (C)
T667	CONCRETE (C)
T668	CONCRETE (C)
T669	CONCRETE (C)
T670	CONCRETE (C)
T671	CONCRETE (C)
T672	CONCRETE (C)
T673	CONCRETE (C)
T674	CONCRETE (C)
T675	CONCRETE (C)
T676	CONCRETE (C)
T677	CONCRETE (C)
T678	CONCRETE (C)
T679	CONCRETE (C)
T680	CONCRETE (C)
T681	CONCRETE (C)
T682	CONCRETE (C)
T683	CONCRETE (C)
T684	CONCRETE (C)
T685	CONCRETE (C)
T686	CONCRETE (C)
T687	CONCRETE (C)
T688	CONCRETE (C)
T689	CONCRETE (C)
T690	CONCRETE (C)
T691	CONCRETE (C)
T692	CONCRETE (C)
T693	CONCRETE (C)
T694	CONCRETE (C)
T695	CONCRETE (C)
T696	CONCRETE (C)
T697	CONCRETE (C)
T698	CONCRETE (C)
T699	CONCRETE (C)
T700	CONCRETE (C)
T701	CONCRETE (C)
T702	CONCRETE (C)
T703	CONCRETE (C)
T704	CONCRETE (C)
T705	CONCRETE (C)
T706	CONCRETE (C)
T707	CONCRETE (C)
T708	CONCRETE (C)
T709	CONCRETE (C)
T710	CONCRETE (C)
T711	CONCRETE (C)
T712	CONCRETE (C)
T713	CONCRETE (C)
T714	CONCRETE (C)
T715	CONCRETE (C)
T716	CONCRETE (C)
T717	CONCRETE (C)
T718	CONCRETE (C)
T719	CONCRETE (C)
T720	CONCRETE (C)
T721	CONCRETE (C)
T722	CONCRETE (C)
T723	CONCRETE (C)
T724	CONCRETE (C)
T725	CONCRETE (C)
T726	CONCRETE (C)
T727	CONCRETE (C)
T728	CONCRETE (C)
T729	CONCRETE (C)
T730	CONCRETE (C)
T731	CONCRETE (C)
T732	CONCRETE (C)
T733	CONCRETE (C)
T734	CONCRETE (C)
T735	CONCRETE (C)
T736	CONCRETE (C)
T737	CONCRETE (C)
T738	CONCRETE (C)
T739	CONCRETE (C)
T740	CONCRETE (C)
T741	CONCRETE (C)
T742	CONCRETE (C)
T743	CONCRETE (C)
T744	CONCRETE (C)
T745	CONCRETE (C)
T746	CONCRETE (C)
T747	CONCRETE (C)
T748	CONCRETE (C)
T749	CONCRETE (C)
T750	CONCRETE (C)
T751	CONCRETE (C)
T752	CONCRETE (C)
T753	CONCRETE (C)
T754	CONCRETE (C)
T755	CONCRETE (C)
T756	CONCRETE (C)
T757	CONCRETE (C)
T758	CONCRETE (C)
T759	CONCRETE (C)
T760	CONCRETE (C)
T761	CONCRETE (C)
T762	CONCRETE (C)
T763	CONCRETE (C)
T764	CONCRETE (C)
T765	CONCRETE (C)
T766	CONCRETE (C)
T767	CONCRETE (C)
T768	CONCRETE (C)
T769	CONCRETE (C)
T770	CONCRETE (C)
T771	CONCRETE (C)
T772	CONCRETE (C)
T773	CONCRETE (C)
T774	CONCRETE (C)
T775	CONCRETE (C)
T776	CONCRETE (C)
T777	CONCRETE (C)
T778	CONCRETE (C)
T779	CONCRETE (C)
T780	CONCRETE (C)
T781	CONCRETE (C)
T782	CONCRETE (C)
T783	CONCRETE (C)
T784	CONCRETE (C)
T785	CONCRETE (C)
T786	CONCRETE (C)
T787	CONCRETE (C)
T788	CONCRETE (C)
T789	CONCRETE (C)
T790	CONCRETE (C)
T791	CONCRETE (C)
T792	CONCRETE (C)
T793	CONCRETE (C)
T794	CONCRETE (C)
T795	CONCRETE (C)
T796	CONCRETE (C)
T797	CONCRETE (C)
T798	CONCRETE (C)
T799	CONCRETE (C)
T8	



The contractor / builder must verify all dimensions on the job and report any discrepancy to the designer before proceeding with the work.

Drawings are NOT to be scaled. All drawings and specifications are instruments of service and the copyright property of the designer and must be returned upon request.

Q4 Architects Inc. retains the copyright in all drawings, plans, sketches, and all digital information. They may not be copied or used for any other projects or purposes or distributed without the written consent of Q4 Architects Inc.

THESE DRAWINGS MUST BE READ IN CONJUNCTION WITH - CONSTRUCTION DETAILS: D0 TO D16 - CONSTRUCTION NOTES: CN-1 & CN-2

THESE DRAWINGS MUST BE READ IN CONJUNCTION WITH STRUCTURAL DRAWINGS BY ATA ENGINEERING INC. - S-01 TO S-07

4	ISSUED FOR PERMIT	2021.08.13	SDW
3	REVISED AS PER COMMENTS	2021.05.21	SDW
2	REVISED AS PER COMMENTS	2021.05.20	SDW
1	PH. 3 DESIGN CHANGES ISSUED FOR REVIEW	2021.04.19	SDW

Issued / Revision Chart

SOUTH NEPEAN TOWN CENTRE PROMENADE PH. 3

AST MASTER BLOCK ELEV. 'TN'

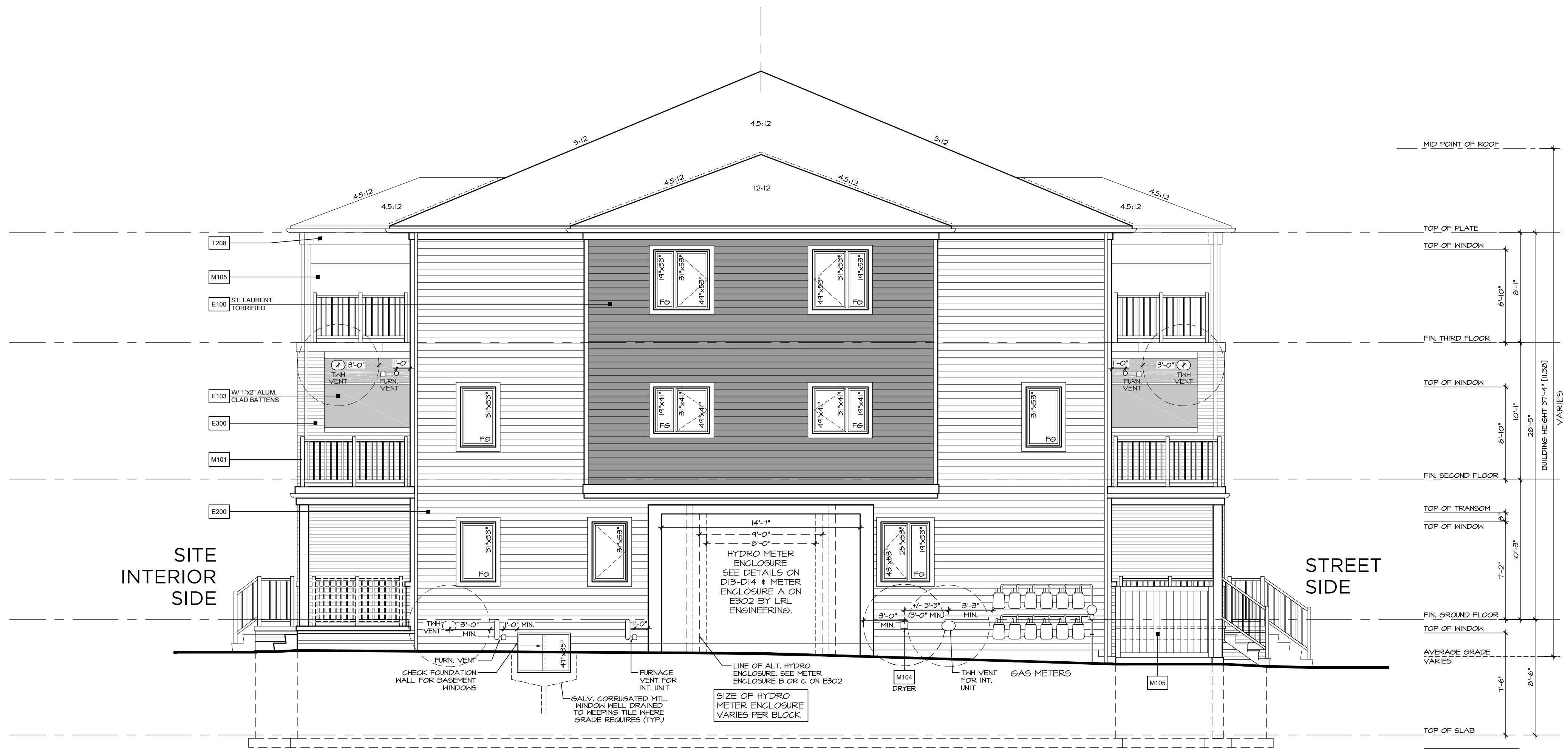
OTTAWA, ONTARIO

MATTAMY HOMES

Project No.
Scale **3/16" = 1'-0"**
Drawn By **SDW**
Checked By **PM**

STD. RIGHT SIDE ELEVATION

MATERIAL LEGEND	
X000	DENOTES NOTE LOCATION ON PLAN
CONCRETE (C)	
C100	POURED CONC. FOUNDATION WALLS AND FOOTINGS (TYP.)
C101	POURED CONC. PORCH SLAB W/ INSET STEPS IF REQUIRED.
C102	MARBLE DOOR SILL
C103	PRECAST CONC. STEP
TRIM & SURROUND CONTINUED (T) ...	
E100	FIBER-CEMENT LAP SIDING
E101	FIBER-CEMENT BOARD & BATTEN - SMOOTH PANEL W/ 1"X2" BATTERS @ 8" O.C.
E102	FIBER-CEMENT SHAKES W/ STRAIGHT EDGE
E103	SMOOTH FIBER-CEMENT PANEL (REFER TO SCOPE OF WORK)
E104	STUCCO TEXTURED FIBER-CEMENT PANEL (REFER TO SCOPE OF WORK)
E200	HORIZONTAL VINYL SIDING (TYP.)
E201	BOARD & BATTEN VINYL SIDING
E202	VINYL SHAKES
E203	SCALLOPED (FISH SCALE) VINYL SIDING
E300	FACE BRICK (TYP.)
E301	STONE VENEER (TYP.)
E302	BRICK HERRINGBONE PATTERN (TYP.)
E303	SMOOTH CHAMFERED STONE VENEER (TYP.)
E400	STUCCO E.F.S. (EXTERIOR INSULATED FINISH SYSTEM)
E401	HIGH IMPACT STUCCO E.F.S. (LOCATE AS PER SCOPE OF WORK)
E402	NON-COMBUSTIBLE STUCCO E.F.S. (TYP.)
E500	PVC PANEL (TYP.)
E600	APPROVED PANEL SYSTEM - AL13 OR EQUAL (TYP.)
E700	AMMATE PANEL SYSTEM - TRESPA OR EQUAL (TYP.)
EXTERIOR CLADDING (E)	
R100	ASPHALT SHINGLES (TYP.)
R101	METAL VALLEY FLASHING (TO MATCH)
R102	METAL FLASHING W/ CAULKING (TO MATCH)
R103	PREFIN. ALUM. FASCIA, VENTED SOFFIT, GUTTER & DOWNSPOUTS
R104	SCUPPER
ROOFING (R)	
T100	FIBER-CEMENT TRIM BOARD
T101	FIBER-CEMENT FRIEZE BOARD
T102	FIBER-CEMENT CORNER TRIM BOARD
T103	FIBER-CEMENT TRANSITION BOARD
T104	FIBER-CEMENT HEADER TRIM BOARD
T105	FIBER-CEMENT SILL TRIM BOARD
T106	FIBER-CEMENT TRIM SURROUND
T107	BUILT-UP FIBER-CEMENT HEADER TRIM (SEE DETAIL)
T108	FIBER-CEMENT PORCH BEAM
T109	METAL TRIM SYSTEM FOR FIBER-CEMENT PANELS - EASYTRIM OR EQUAL (TYP.)
T200	ALUM. CLAD TRIM BOARD
T201	ALUM. CLAD FRIEZE BOARD
T202	ALUM. CLAD CORNER TRIM BOARD
T203	ALUM. CLAD TRANSITION BOARD
T204	ALUM. CLAD HEADER TRIM BOARD
T205	ALUM. CLAD SILL TRIM BOARD
T206	ALUM. CLAD TRIM SURROUND
T207	BUILT-UP ALUM. CLAD HEADER TRIM (SEE DETAIL)
T208	ALUM. CLAD PORCH BEAM
T210	ALUM. CLAD DOOR SILL
T220	PVC TRIM BOARD
T221	PVC FRIEZE BOARD
T222	PVC CORNER TRIM BOARD
T223	PVC TRANSITION BOARD
T224	PVC HEADER TRIM BOARD
T225	PVC SILL TRIM BOARD
T226	PVC TRIM SURROUND
T227	BUILT-UP PVC HEADER TRIM (SEE DETAIL)
T228	PVC PORCH BEAM
T229	PVC ARCHED TRIM BOARD
T230	PVC KEYSTONE
T300	BRICK STACK BOND W/ 1/2" PROJECTION (SEE DETAIL) - OR EQUIV.
T301	BRICK ROWLOCK W/ 1/2" PROJECTION (SEE DETAIL)
T302	BRICK SOLDIER W/ 1/2" PROJECTION (SEE DETAIL)
T303	SELF SUPPORTING BRICK SOLDIER W/ 1/2" PROJECTION (SEE DETAIL)
T304	BRICK PILASTER (SEE DETAIL)
T320	PRECAST CONCRETE CAP
T321	PRECAST CONCRETE SILL W/ 1/2" PROJECTION
T322	CAST STONE WATERABLE SILL
T323	SMOOTH PRECAST OR STONE W/ 1/2" PROJECTION
T324	PRECAST SOLDIER BLOCKS W/ 1/2" PROJECTION
TRIM & SURROUND (T)	
T325	SELF SUPPORTING PRECAST ARCH W/ 1/2" PROJECTION
T326	BUILT-UP PRECAST HEADER TRIM (SEE DETAIL)
T327	PRECAST CONCRETE KEYSTONE
T328	DOUBLE PRECAST CONCRETE KEYSTONE
T329	STONE / PRECAST CONCRETE IMPOST
T400	DECOR. STUCCO TRIM (SEE DETAIL)
T401	DECOR. STUCCO FRIEZE BOARD (SEE DETAIL)
T402	DECOR. STUCCO KEYSTONE (SEE DETAIL)
T403	DECOR. STUCCO TRANSITION BAND (SEE DETAIL)
T404	DECOR. STUCCO HEADER TRIM (SEE DETAIL)
T405	DECOR. STUCCO SILL TRIM (SEE DETAIL)
T406	DECOR. STUCCO TRIM SURROUND (SEE DETAIL)
T407	BUILT-UP DECOR. STUCCO HEADER TRIM (SEE DETAIL)
T408	DECOR. STUCCO PORCH BEAM
T409	STUCCO FRIEZE BOARD
T410	STUCCO TRIM
T411	STUCCO HEADER TRIM
T412	STUCCO SILL TRIM
ARCHITECTURAL ORNAMENTS (A)	
A100	DECORATIVE BRACKET (SEE DETAIL)
A101	DECORATIVE FEATURE (SEE DETAIL)
A102	DECORATIVE PTD. PVC OR VINYL LOUVER OR EQUAL (SEE DETAIL)
A103	DECORATIVE PTD. PVC OR VINYL RAISED PANEL SHUTTERS OR EQUAL (SEE DETAIL)
A104	DECORATIVE PTD. PVC OR VINYL LOUVERED SHUTTERS OR EQUAL (SEE DETAIL)
A105	DECORATIVE PTD. PVC OR VINYL BOARD & BATTEN SHUTTERS W/ OPEN WEAVE (SEE DETAIL)
A106	DECORATIVE PTD. PVC OR VINYL BOARD & BATTEN SHUTTERS W/ CLOSED WEAVE (SEE DETAIL)
A107	DECORATIVE GABLE DETAIL (SEE DETAIL)
A108	DECORATIVE BLACK GLASS WINDOW
MISC. ARCHIT. (M)	
M100	VINYL RAILING INSTALLED TO COMPLY W/ O.B.C. 9.8.7 & 9.8.8 & SB-7 (REFER TO SCOPE OF WORK)
M101	ALUMINUM RAILING INSTALLED TO COMPLY W/ O.B.C. 9.8.7 & 9.8.8 & SB-7 (REFER TO SCOPE OF WORK)
M102	GLASS RAILING INSTALLED TO COMPLY W/ O.B.C. 2.1.1 & SB-13 (REFER TO SCOPE OF WORK)
M103	DECORATIVE WROUGHT IRON RAILING (REFER TO SCOPE OF WORK)
M104	EXTERIOR VENT
M105	PRIVACY SCREEN (REFER TO SCOPE OF WORK)
M106	PRESSURE TREATED WOOD DECK
M107	FIBERGLASS INSECT SCREENING - OR EQUIV.
M108	STAINED WOOD
M109	PVC OR FIBERGLASS TRELLIS (SEE DETAIL)
M110	CONTROL JOINT
M111	PROJECTED BOX-OUT (SEE DETAIL)
POSTS & COLUMNS (P)	
P100	SQUARE TAPERED COLUMN (SEE DETAIL) - OR EQUIV.
P101	SQUARE RECESSED PANEL COLUMN (SEE DETAIL)
P102	MASONRY PORCH PIER (SEE DETAIL)
P103	PORCH PIER W/ TRIMMED PANELS (SEE DETAIL)
P104	SQUARE VINYL OR FIBERGLASS COLUMN
P105	ROUND VINYL OR FIBERGLASS COLUMN
NOTES:	
1. REFER TO "EXTERIOR COLOUR SCHEDULE" FOR COLOUR SELECTIONS - ALL MATERIALS	



4A AST3 'TN'
NIGHTSHADE II REV.

5A AST3 'TN'
NIGHTSHADE II

12B AST4 'TN'
POPPY II REV.

STANDARD RIGHT SIDE ELEVATION 'TN' W/ HYDRO & GAS METERS

2021.03.15 11:11 AM C:\Users\mattamy\OneDrive\Documents\Projects\2021\03\15\11:11 AM C:\Users\mattamy\OneDrive\Documents\Projects\2021\03\15\11:11 AM C:\Users\mattamy\OneDrive\Documents\Projects\2021\03\15\11:11 AM



The contractor / builder must verify all dimensions on the job and report any discrepancy to the designer before proceeding with the work.
Drawings are NOT to be scaled. All drawings and specifications are instruments of service and the copyright property of the designer and must be returned upon request.

Q4 Architects Inc. retains the copyright in all drawings, plans, sketches, and all digital information. They may not be copied or used for any other projects or purposes or distributed without the written consent of Q4 Architects Inc.

THESE DRAWINGS MUST BE READ IN CONJUNCTION WITH - CONSTRUCTION DETAILS: D0 TO D16 - CONSTRUCTION NOTES: CN-1 & CN-2

THESE DRAWINGS MUST BE READ IN CONJUNCTION WITH STRUCTURAL DRAWINGS BY ATA ENGINEERING INC. - S-01 TO S-07

4	ISSUED FOR PERMIT	2021.08.13	SDW
3	REVISED AS PER COMMENTS	2021.05.21	SDW
2	REVISED AS PER COMMENTS	2021.05.20	SDW
1	PH. 3 DESIGN CHANGES ISSUED FOR REVIEW	2021.04.19	SDW

Issued / Revision Chart

SOUTH NEPEAN TOWN CENTRE PROMENADE PH. 3

AST MASTER BLOCK ELEV. 'TN'

OTTAWA, ONTARIO

MATTAMY HOMES

Project No.
Scale **3/16" = 1'-0"**
Drawn By **SDW**
Checked By **PM**

UPG. LEFT SIDE ELEVATION

MAR. 2021

B2-9

MATERIAL LEGEND	
X000	DENOTES NOTE LOCATION ON PLAN
CONCRETE (C)	<p>C100 POURED CONC. FOUNDATION WALLS AND FOOTINGS (TYP.)</p> <p>C101 POURED CONC. PORCH SLAB W/ INSET STEPS (IF REQUIRED)</p> <p>C102 MARBLE DOOR SILL</p> <p>C103 PRECAST CONC. STEP</p>
TRIM & SURROUND CONTINUED (T)	<p>T325 SELF SUPPORTING PRECAST ARCH W/ 1/2" PROJECTION</p> <p>T326 BUILT-UP PRECAST HEADER TRIM (SEE DETAIL)</p> <p>T327 PRECAST CONCRETE KEYSTONE</p> <p>T328 DOUBLE PRECAST CONCRETE KEYSTONE</p> <p>T329 STONE / PRECAST CONCRETE IMPOST</p> <p>T400 DECOR. STUCCO TRIM (SEE DETAIL)</p> <p>T401 DECOR. STUCCO FRIEZE BOARD (SEE DETAIL)</p> <p>T402 DECOR. STUCCO KEYSTONE (SEE DETAIL)</p> <p>T403 DECOR. STUCCO TRANSITION BAND (SEE DETAIL)</p> <p>T404 DECOR. STUCCO HEADER TRIM (SEE DETAIL)</p> <p>T405 DECOR. STUCCO SILL TRIM (SEE DETAIL)</p> <p>T406 DECOR. STUCCO TRIM SURROUND (SEE DETAIL)</p> <p>T407 BUILT-UP DECOR. STUCCO HEADER TRIM (SEE DETAIL)</p> <p>T408 DECOR. STUCCO PORCH BEAM</p> <p>T409 STUCCO FRIEZE BOARD</p> <p>T410 STUCCO TRIM</p> <p>T411 STUCCO HEADER TRIM</p> <p>T412 STUCCO SILL TRIM</p>
EXTERIOR CLADDING (E)	<p>E100 FIBER-CEMENT LAP SIDING</p> <p>E101 FIBER-CEMENT BOARD & BATTEN - SMOOTH PANEL W/ 1/2" BATTERS @ 8" O.C.</p> <p>E102 FIBER-CEMENT SHAKES W/ STRAIGHT EDGE</p> <p>E103 SMOOTH FIBER-CEMENT PANEL (REFER TO SCOPE OF WORK)</p> <p>E104 STUCCO TEXTURED FIBER-CEMENT PANEL (REFER TO SCOPE OF WORK)</p> <p>E200 HORIZONTAL VINYL SIDING (TYP.)</p> <p>E201 BOARD & BATTEN VINYL SIDING</p> <p>E202 VINYL SHAKES</p> <p>E203 SCALLOPED (FISH SCALE) VINYL SIDING</p> <p>E300 FACE BRICK (TYP.)</p> <p>E301 STONE VENEER (TYP.)</p> <p>E302 BRICK HERRINGBONE PATTERN (TYP.)</p> <p>E303 SMOOTH CHAMFERED STONE VENEER (TYP.)</p> <p>E400 STUCCO E.F.S. (EXTERIOR INSULATED FINISH SYSTEM)</p> <p>E401 HIGH IMPACT STUCCO E.F.S. (LOCATE AS PER SCOPE OF WORK)</p> <p>E402 NON-COMBUSTIBLE STUCCO E.F.S. (TYP.)</p> <p>E500 PVC PANEL (TYP.)</p> <p>E600 APPROVED PANEL SYSTEM - AL13 OR EQUAL (TYP.)</p> <p>E700 LAMINATE PANEL SYSTEM - TRESPA OR EQUAL (TYP.)</p>
ROOFING (R)	<p>R100 ASPHALT SHINGLES (TYP.)</p> <p>R101 METAL VALLEY FLASHING (TO MATCH)</p> <p>R102 METAL FLASHING W/ CAULKING (TO MATCH)</p> <p>R103 PREFIN. ALUM. FASCIA, VENTED SOFFIT, GUTTER & DOWNSPOUTS</p> <p>R104 SCUPPER</p> <p>R105 LOW SLOPE ROOF SHINGLE APPLICATION</p> <p>R106 ICE & WATER SHIELD</p> <p>R107 METAL CAP FLASHING</p> <p>R108 METAL BEAM ROOF</p> <p>R109 13 GAUGE ALUM. CLAD CANOPY (AL13)</p> <p>R110 PREFINISHED METAL CANOPY ROOF W/ DECORATIVE STEEL CABLE SUPPORTS</p> <p>R111 METAL FLASHING (EXTEND 6" BENEATH CLADDING) (TO MATCH)</p> <p>R112 ARTS & CRAFTS SOFFIT (SEE DETAIL)</p> <p>R113 CURVED SOFFIT (SEE DETAIL)</p>
ARCHITECTURAL ORNAMENTS (A)	<p>A100 DECORATIVE BRACKET (SEE DETAIL)</p> <p>A101 DECORATIVE FEATURE (SEE DETAIL)</p> <p>A102 DECORATIVE PTD. PVC OR VINYL LOUVER OR EQUAL (SEE DETAIL)</p> <p>A103 DECORATIVE PTD. PVC OR VINYL RAISED PANEL SHUTTERS OR EQUAL (SEE DETAIL)</p> <p>A104 DECORATIVE PTD. PVC OR VINYL LOUVERED SHUTTERS OR EQUAL (SEE DETAIL)</p> <p>A105 DECORATIVE PTD. PVC OR VINYL BOARD & BATTEN SHUTTERS W/ OPEN WEAVE (SEE DETAIL)</p> <p>A106 DECORATIVE PTD. PVC OR VINYL BOARD & BATTEN SHUTTERS W/ CLOSED WEAVE (SEE DETAIL)</p> <p>A107 DECORATIVE GABLE DETAIL (SEE DETAIL)</p> <p>A108 DECORATIVE BLACK GLASS WINDOW</p>
MISC. ARCHIT. (M)	<p>M100 VINYL RAILING INSTALLED TO COMPLY W/ O.B.C. 9.8.7 & 9.8.8 & 9.8.7 (REFER TO SCOPE OF WORK)</p> <p>M101 ALUMINUM RAILING INSTALLED TO COMPLY W/ O.B.C. 9.8.7 & 9.8.8 & 9.8.7 (REFER TO SCOPE OF WORK)</p> <p>M102 GLASS RAILING INSTALLED TO COMPLY W/ O.B.C. 2.1.1 & 9.8.13 (REFER TO SCOPE OF WORK)</p> <p>M103 DECORATIVE WROUGHT IRON RAILING (REFER TO SCOPE OF WORK)</p> <p>M104 EXTERIOR VENT</p> <p>M105 PRIVACY SCREEN (REFER TO SCOPE OF WORK)</p> <p>M106 PRESSURE TREATED WOOD DECK</p> <p>M107 FIBERGLASS INSECT SCREENING - OR EQUIV.</p> <p>M108 STAINED WOOD</p> <p>M109 PVC OR FIBERGLASS TRELLIS (SEE DETAIL)</p> <p>M110 CONTROL JOINT</p> <p>M111 PROJECTED BOX-OUT (SEE DETAIL)</p>
POSTS & COLUMNS (P)	<p>P100 SQUARE TAPERED COLUMN (SEE DETAIL) - OR EQUIV.</p> <p>P101 SQUARE RECESSED PANEL COLUMN (SEE DETAIL)</p> <p>P102 MASONRY PORCH PIER (SEE DETAIL)</p> <p>P103 PORCH PIER W/ TRIMMED PANELS (SEE DETAIL)</p> <p>P104 SQUARE VINYL OR FIBERGLASS COLUMN</p> <p>P105 ROUND VINYL OR FIBERGLASS COLUMN</p>
TRIM & SURROUND (T)	<p>T100 FIBER-CEMENT TRIM BOARD</p> <p>T101 FIBER-CEMENT FRIEZE BOARD</p> <p>T102 FIBER-CEMENT CORNER TRIM BOARD</p> <p>T103 FIBER-CEMENT TRANSITION BOARD</p> <p>T104 FIBER-CEMENT HEADER TRIM BOARD</p> <p>T105 FIBER-CEMENT SILL TRIM BOARD</p> <p>T106 FIBER-CEMENT TRIM SURROUND</p> <p>T107 BUILT-UP FIBER-CEMENT HEADER TRIM (SEE DETAIL)</p> <p>T108 FIBER-CEMENT PORCH BEAM</p> <p>T109 METAL TRIM SYSTEM FOR FIBER-CEMENT PANELS - EASYTRIM OR EQUAL (TYP.)</p> <p>T200 ALUM. CLAD TRIM BOARD</p> <p>T201 ALUM. CLAD FRIEZE BOARD</p> <p>T202 ALUM. CLAD CORNER TRIM BOARD</p> <p>T203 ALUM. CLAD TRANSITION BOARD</p> <p>T204 ALUM. CLAD HEADER TRIM BOARD</p> <p>T205 ALUM. CLAD SILL TRIM BOARD</p> <p>T206 ALUM. CLAD TRIM SURROUND</p> <p>T207 BUILT-UP ALUM. CLAD HEADER TRIM (SEE DETAIL)</p> <p>T208 ALUM. CLAD PORCH BEAM</p> <p>T210 ALUM. CLAD DOOR SILL</p> <p>T220 PVC TRIM BOARD</p> <p>T221 PVC FRIEZE BOARD</p> <p>T222 PVC CORNER TRIM BOARD</p> <p>T223 PVC TRANSITION BOARD</p> <p>T224 PVC HEADER TRIM BOARD</p> <p>T225 PVC SILL TRIM BOARD</p> <p>T226 PVC TRIM SURROUND</p> <p>T227 BUILT-UP PVC HEADER TRIM (SEE DETAIL)</p> <p>T228 PVC PORCH BEAM</p> <p>T229 PVC ARCHED TRIM BOARD</p> <p>T300 BRICK STACK BOND W/ 1/2" PROJECTION</p> <p>T301 BRICK ROWLOCK W/ 1/2" PROJECTION</p> <p>T302 BRICK SOLDIER W/ 1/2" PROJECTION</p> <p>T303 SELF SUPPORTING BRICK SOLDIER W/ 1/2" PROJECTION</p> <p>T304 BRICK PILASTER (SEE DETAIL)</p> <p>T320 PRECAST CONCRETE CAP</p> <p>T321 PRECAST CONCRETE SILL W/ 1/2" PROJECTION</p> <p>T322 CAST STONE WATERTABLE SILL</p> <p>T323 SMOOTH PRECAST OR STONE W/ 1/2" PROJECTION</p> <p>T324 PRECAST SOLDIER BLOCKS W/ 1/2" PROJECTION</p>



8A AST3 'TN' UPG.
NIGHTSHADE II REV.

NOTE: HYDRO METER ENCLOSURE A DOES NOT FIT ON AN UPGRADED SIDE ELEVATION

1A AST3 'TN' UPG.
NIGHTSHADE II

9B AST4 'TN' UPG.
POPPY II

UPGRADED LEFT SIDE ELEVATION 'TN'

2021.03.11 11:15 AM C:\Users\mattamy\OneDrive\Documents\Projects\2021\03\11\11-15-21\11-15-21.dwg - AutoCAD 2021.03.11 11:15 AM

Q4 ARCHITECTS INC.

2771 Avenue Road
Suite 302, Toronto ON
M5M 4B4

T: 416.322.6334
F: 416.322.7294
E: info@q4architects.com



The contractor / builder must verify all dimensions on the job and report any discrepancy to the designer before proceeding with the work.
Drawings are NOT to be scaled. All drawings and specifications are instruments of service and the copyright property of the designer and must be returned upon request.

Q4 Architects Inc. retains the copyright in all drawings, plans, sketches, and all digital information. They may not be copied or used for any other projects or purposes or distributed without the written consent of Q4 Architects Inc.

THESE DRAWINGS MUST BE READ IN CONJUNCTION WITH
- CONSTRUCTION DETAILS: D0 TO D16
- CONSTRUCTION NOTES: CN-1 & CN-2

THESE DRAWINGS MUST BE READ IN CONJUNCTION WITH
STRUCTURAL DRAWINGS
BY ATA ENGINEERING INC.
- S-01 TO S-07

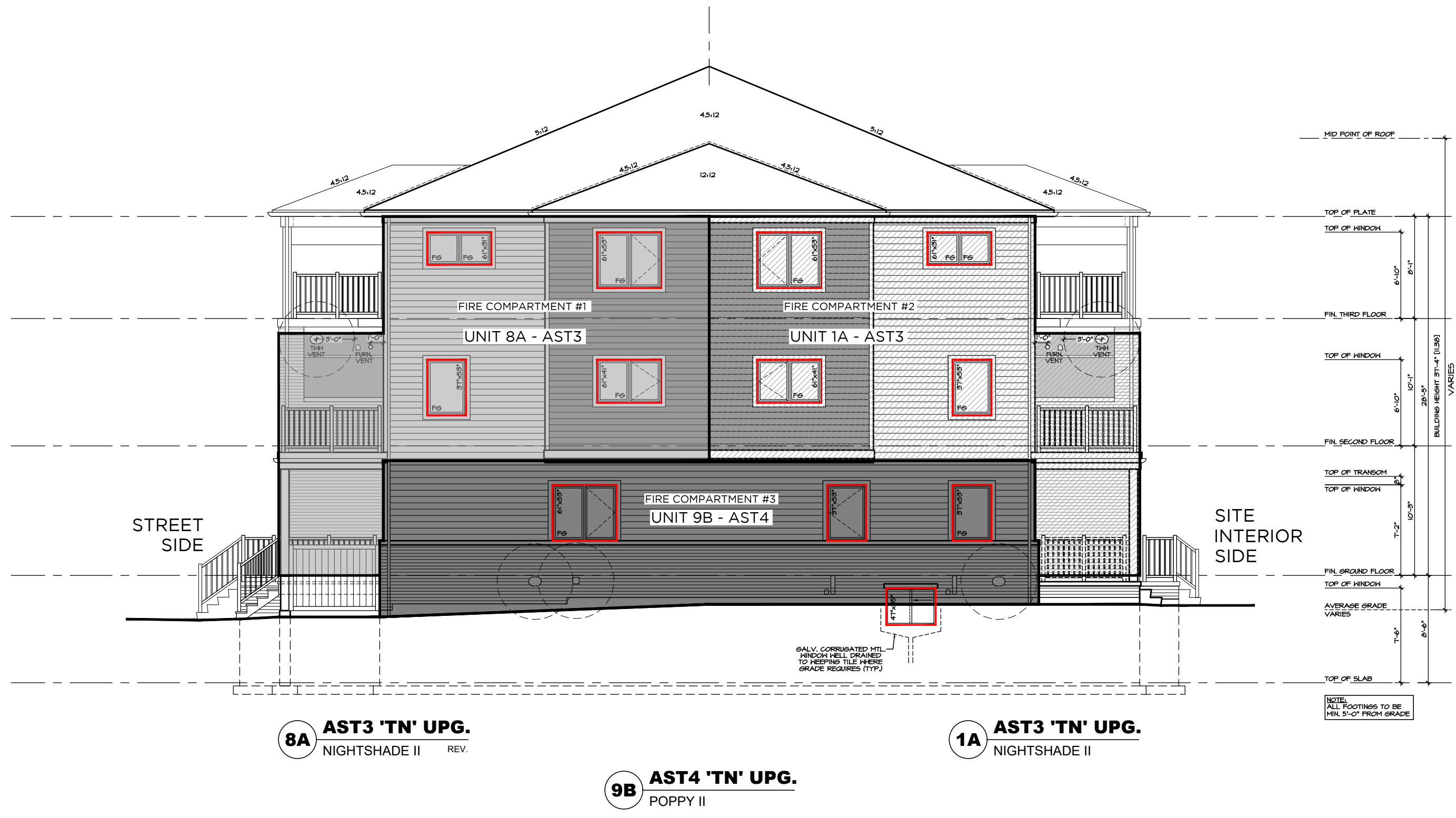


REAR ELEVATION 'CR' - STREET SIDE

AS PER O.B.C. 9.10.14.4 THE MINIMUM LIMITING DISTANCE = 3.8 m TO ACHIEVE COMBUSTIBLE CONSTRUCTION AND COMBUSTIBLE CLADDING

Fire Compartment	Unit	Hall Area (sq ft)	Openings Provided (sq ft)	% of UPO
Fire Compartment #1	UNIT 5A - AST3 CR UPG.	528.1	68.13	13.1%
Fire Compartment #2	UNIT 6A - AST1 CR	422.8	68.13	16.1%
Fire Compartment #3	UNIT 7A - AST1 CR	422.8	68.13	16.1%
Fire Compartment #4	UNIT 8A - AST3 CR UPG.	528.1	68.13	13.1%
Fire Compartment #5	UNIT 12B - AST4 CR	528.1	68.13	13.1%
Fire Compartment #6	UNIT 11B - AST2 CR	422.8	68.13	16.1%
Fire Compartment #7	UNIT 10B - AST2 CR	422.8	68.13	16.1%
Fire Compartment #8	UNIT 9B - AST4 CR UPG.	528.1	68.13	13.1%

Area of EBF	Limiting Distance
3 m	3.8 m
50 m ²	10 %
100 m ²	25 %



UPGRADED LEFT SIDE ELEVATION 'CR'

AS PER O.B.C. 9.10.14.4 THE MINIMUM LIMITING DISTANCE = 4.1 m TO ACHIEVE COMBUSTIBLE CONSTRUCTION AND COMBUSTIBLE CLADDING

Fire Compartment	Unit	Hall Area (sq ft)	Openings Provided (sq ft)	% of UPO
Fire Compartment #1	UNIT 8A - AST3 CR UPG.	528.1	68.13	13.1%
Fire Compartment #2	UNIT 1A - AST3 CR UPG.	422.8	68.13	16.1%
Fire Compartment #3	UNIT 9B - AST4 CR UPG.	528.1	68.13	13.1%

Area of EBF	Limiting Distance
3 m	4.1 m
50 m ²	25 %
100 m ²	50 %

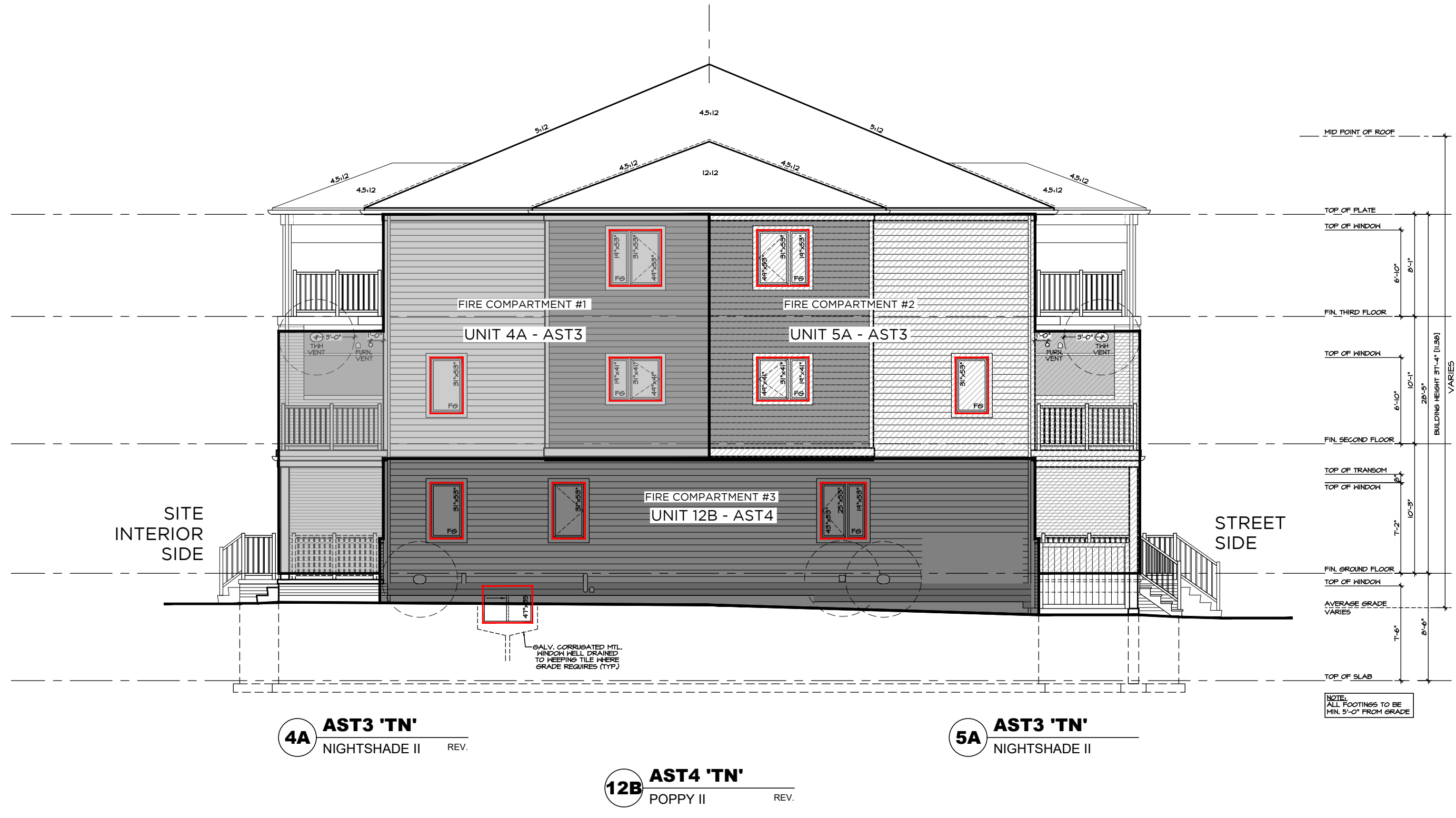


FRONT ELEVATION 'CR' - SITE INTERIOR SIDE

AS PER O.B.C. 9.10.14.4 THE MINIMUM LIMITING DISTANCE = 3.8 m TO ACHIEVE COMBUSTIBLE CONSTRUCTION AND COMBUSTIBLE CLADDING

Fire Compartment	Unit	Hall Area (sq ft)	Openings Provided (sq ft)	% of UPO
Fire Compartment #1	UNIT 1A - AST3 CR UPG.	528.1	68.13	13.1%
Fire Compartment #2	UNIT 2A - AST1 CR	422.8	68.13	16.1%
Fire Compartment #3	UNIT 3A - AST1 CR	422.8	68.13	16.1%
Fire Compartment #4	UNIT 4A - AST3 CR	528.1	68.13	13.1%
Fire Compartment #5	UNIT 9B - AST4 CR	528.1	68.13	13.1%
Fire Compartment #6	UNIT 10B - AST2 CR	422.8	68.13	16.1%
Fire Compartment #7	UNIT 11B - AST2 CR	422.8	68.13	16.1%
Fire Compartment #8	UNIT 12B - AST4 CR	528.1	68.13	13.1%

Area of EBF	Limiting Distance
3 m	3.8 m
50 m ²	10 %
100 m ²	25 %



STANDARD RIGHT SIDE ELEVATION 'CR'

AS PER O.B.C. 9.10.14.4 THE MINIMUM LIMITING DISTANCE = 4.1 m TO ACHIEVE COMBUSTIBLE CONSTRUCTION AND COMBUSTIBLE CLADDING

Fire Compartment	Unit	Hall Area (sq ft)	Openings Provided (sq ft)	% of UPO
Fire Compartment #1	UNIT 4A - AST3 CR	528.1	68.13	13.1%
Fire Compartment #2	UNIT 5A - AST3 CR	422.8	68.13	16.1%
Fire Compartment #3	UNIT 12B - AST4 CR	528.1	68.13	13.1%

Area of EBF	Limiting Distance
3 m	4.1 m
50 m ²	25 %
100 m ²	50 %

Revision	Description	Date
4	ISSUED FOR PERMIT	2021/08/13
3	REVISED AS PER COMMENTS	2021/05/21
2	REVISED AS PER COMMENTS	2021/05/10
1	PH. 3 DESIGN CHANGES ISSUED FOR REVIEW	2021/04/19

SOUTH NEPEAN TOWN CENTRE PROMENADE PH. 3

AST MASTER BLOCK ELEV. 'TN'

OTTAWA, ONTARIO

MATTAMY HOMES

Project No. Scale 3/16" = 1'-0"

Drawn By SDW

Checked By PM

UNPROTECTED OPENINGS & LIMITING DISTANCE

MAR. 2021