

# PROJET | PAYSAGE

24 Mont-Royal O. Bureau 801 Montréal Québec H2T 2S2  
T: 514.849.7700 F: 514.849.2027 info@projetpaysage.com



IMAGE CONCEPTUELLE. LES SPÉCIFICATIONS DES PLANS ET DEVIS PEUVENT VARIER

CLIENT:



PROJECT: **979, WELLINGTON**

ML Wellington Realty Investments Inc.  
C/O ML DEVCO INC  
651, Churchill Avenue N  
Ottawa (Ontario) K1Z 5G2  
Tel: 613-686-6319

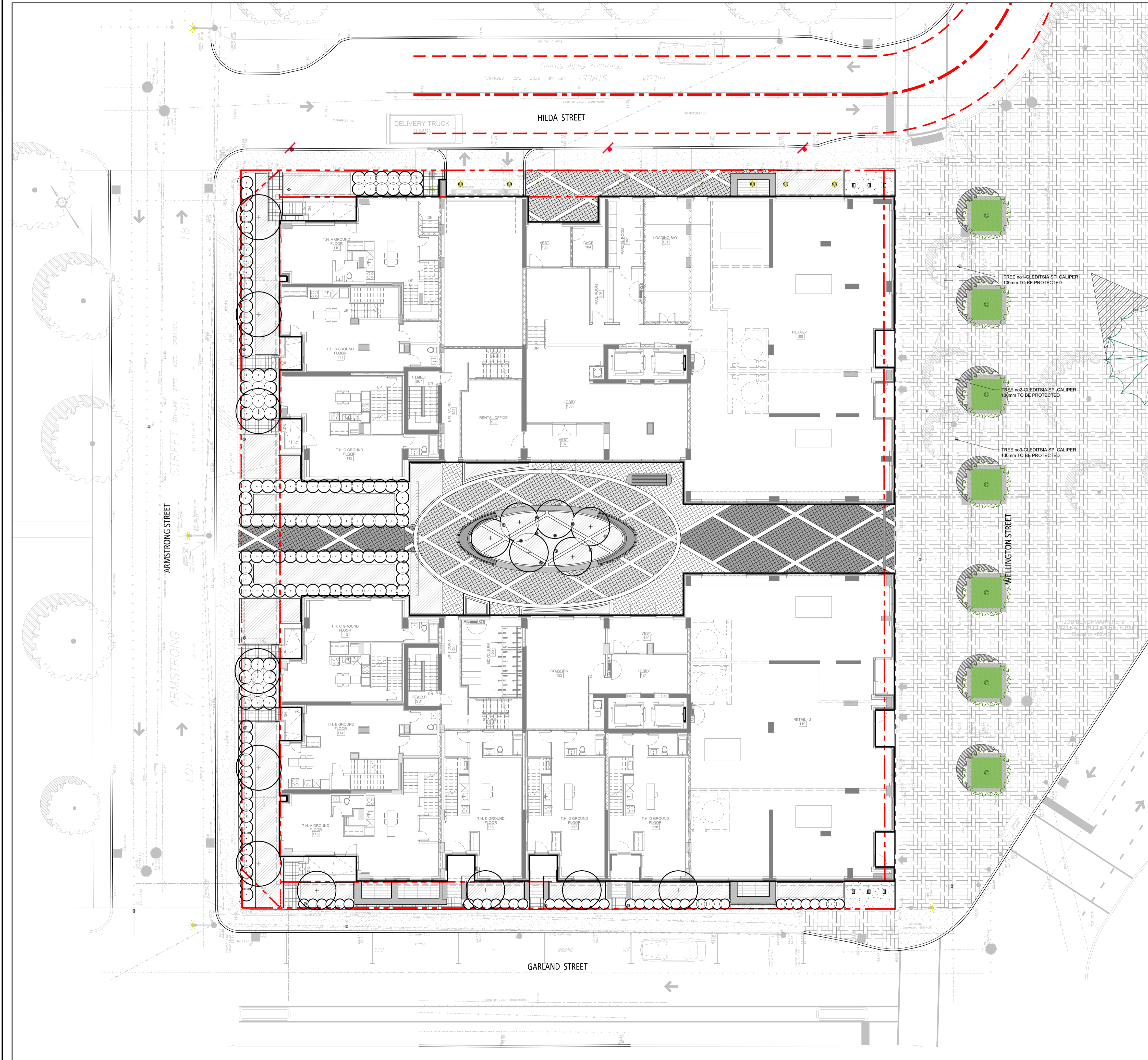
## Architecture de paysage / Landscape Architecture

FEUILLET / SHEET	TITRE / TITLE	ÉCHELLE / SCALE
AP-10	PLAN D'ENSEMBLE / LANDSCAPE PLAN	1:150
AP-20	PLAN DE DESCRIPTION / DESCRIPTION PLAN	1:150
AP-30	PLAN DE PLANTATION / PLANTING PLAN	1:150
AP-40	PLAN D'ÉCLAIRAGE ET IRRIGATION / LIGHTING AND IRRIGATION PLAN	1:150
AP-50	DÉTAILS DE CONSTRUCTION / CONSTRUCTION DETAILS	VARIÉES / VARIES
AP-51	DÉTAILS DE CONSTRUCTION / CONSTRUCTION DETAILS	VARIÉES / VARIES
AP-52	DÉTAILS DE PLANTATION / PLANTING DETAILS	VARIÉES / VARIES

In collaboration with:

Architecture	Transportation Engineer	Geotechnical Engineer	Surveyor	Civil Engineer	Urban Planner
<b>RODERICK LAHEY</b> ARCHITECTS  56 Beech Street Ottawa, Ontario, K1S 3J6 T. 613.724.9932 E. admin@rlaarchitecture.ca	<b>CGH TRANSPORTATION INC.</b>  13 Markham Avenue Ottawa, Ontario, K2G 3Z1 T. 343.999.9117 E. christopher.gordon@cgtransportation.com	<b>PATERSON GROUP</b>  154 Colonnade Road South Ottawa, Ontario, K2E 7J5 T. 613.226.7381 E. md'arcy@patersongroup.ca	<b>ANNIS O'SULLIVAN VOLLEBEKK LTD.</b> Ontario Land Surveyors  14 Concourse Gate, Suite 500, Nepean, Ontario, K2E 7S6 T. 613.727.0850 F. 613.727.1079 E. edh@aovltd.com	<b>IBI GROUP</b>  333 Preston Street, Suite 400 Ottawa, Ontario, K1S 5N4 T. 613.225.1311 F. 613.225.9868 E. jmoffatt@ibigroup.com	<b>FOTENN CONSULTANTS INC.</b>  396 Cooper Street, Suite 300 Ottawa, Ontario, K2P 2H7 T. 613.730.5709 F. 613.730.1136 E. nitsche@fotenn.com

No.: #18841  
 Project: 979, Wellington // D07-12-21-0228  
 Revision: Issued for Site Plan Control // 2023-08-13



**LEGEND**

- Lot limit
- Intervention limit
- Top level soil slope
- Bottom level soil slope
- Proposed deciduous trees and shrubs
- Proposed coniferous trees and shrubs
- Perennials and grasses
- Turf
- Lighting, see lighting plan

**MAGIL LAURENTIENNE**  
ML Wellington Realty Investments Inc.  
G/O ML DEVCO INC  
651, Churchill Avenue N  
Ottawa (Ontario) K1Z 5G2  
Tel: 613-686-6319

**Revisions**

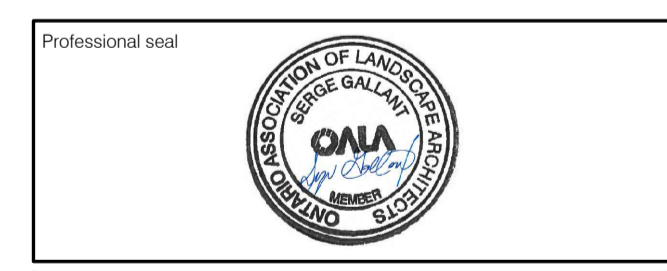
No	Description	Appr.	Date
1	Preliminary issue	S.G.	11/15/21
2	Site Plan Control	S.G.	12/10/21
3	Site Plan Control	S.G.	12/13/21
4	Site Plan Control	S.G.	12/15/21
5	Site Plan Control	S.G.	03/18/22
6	Site Plan Control	S.G.	06/23/22
7	Coordination plans - 99%	S.G.	08/26/22
8	Site Plan Control	S.G.	12/13/22
9	Site Plan Control	S.G.	02/24/23
10	Site Plan Control	S.G.	03/13/23

**DO NOT USE FOR CONSTRUCTION**

- Notes :**
- The Contractor must verify all site existing conditions before beginning the work and inform the Project Director of any errors, omissions or contradictions.
  - Existing grades indicated on the plan come from the survey provided by the owner.
  - The Contractor must not cut down any existing vegetation without the approval of the Project Director.
  - Implantation of the works on site must be approved by the Project Director.
  - The Contractor must use the CAD file for implantation of all work.
  - The contractor must verify the amounts specified in the schedule and notify the landscape architect of any errors, omissions or contradictions before the close of the bid.

**PROJET | PAYSAGE**

24 Mont-Royal O. Bureau 901 Montréal Québec H2T 2S2  
T: 514.849.7700 F: 514.849.2027 info@projetpaysage.com

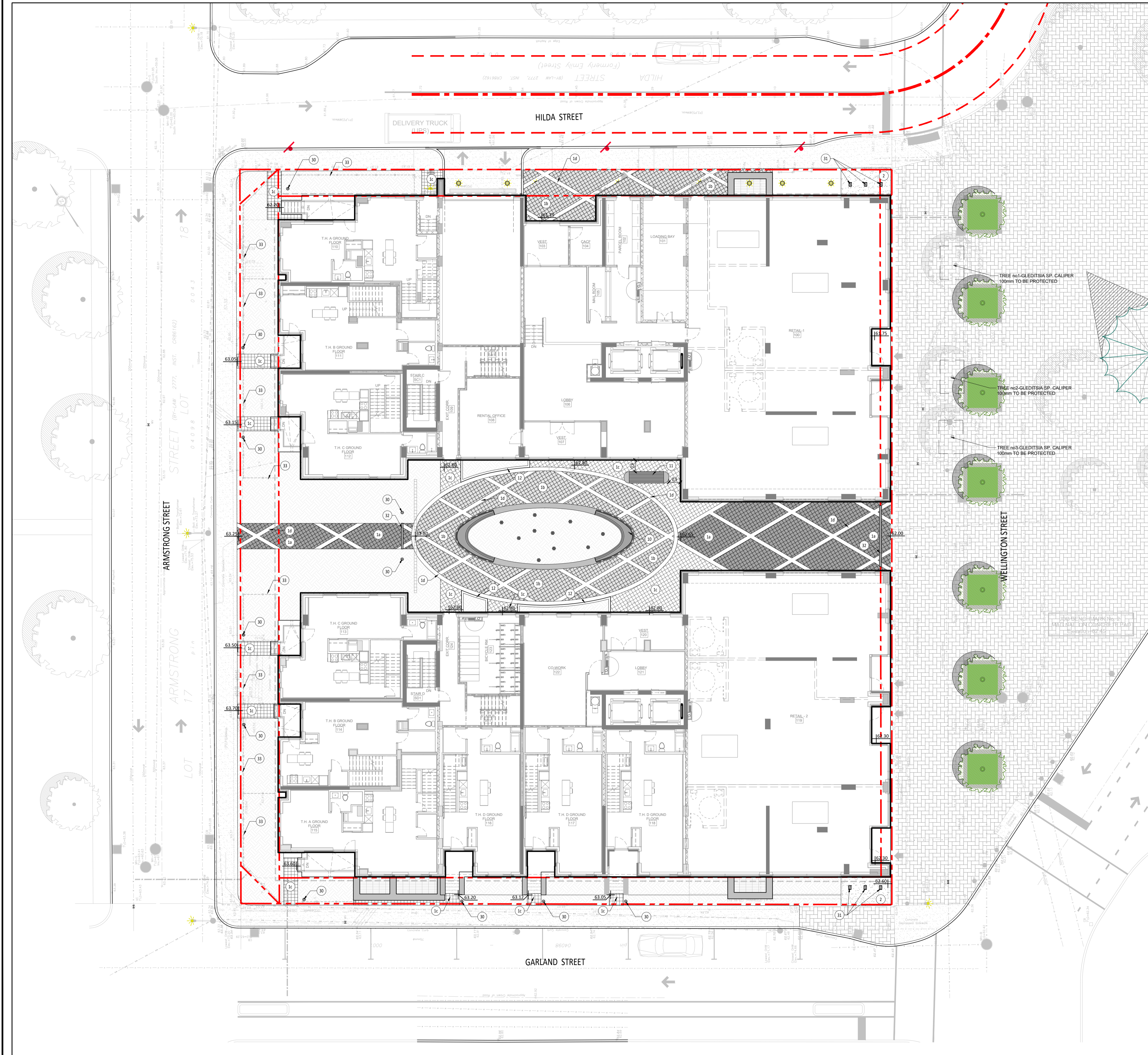


Project name  
**979, WELLINGTON  
D017-12-21-0228**

Drawing title  
**LANDSCAPE PLAN**

1:150

Designed by: S. Gallant	Sheet No.:
Drawn by: X. Benjamin	<b>AP-10</b>
Approved by: S. Gallant	
Date: November 2020	
Plan No: 18841	



**LEGEND**

- Lot limit
- Intervention limit
- Proposed levels
- 00.00
- TW Top low wall
- TB Top border
- TS Top staircase
- TD Top soil slope
- TT Top drain
- BW Bottom low wall
- BB Bottom border
- BS Bottom staircase
- BT Bottom soil slope
- HP High point
- High level soil slope
- Bottom level soil slope
- Lighting, see lighting plan
- Tree pit, see details
- Planting bed, see planting plan
- Grass or seeding, see planting plan

**List of details on plans**

Key Description

Surfaces

01 Pavers

- a: Type A
- b: Type B
- c: Type C
- d: Type D

02 Poured concrete surface

Precast concrete

- 10 Modular precast concrete bench
- 11 Precast concrete bench
- 12 Precast concrete curb

Equipment and furniture

- 30 Bollard lighting (See civil)
- 31 Bike rack
- 32 Trench drain
- 33 Low decorative rough iron fence

**MAGIL LAURENTIENNE**  
 ML Wellington Realty Investments Inc.  
 610 ML DEVCO INC  
 651, Churchill Avenue N  
 Ottawa (Ontario) K1Z 5G2  
 Tel: 613-686-6319

**Revisions**

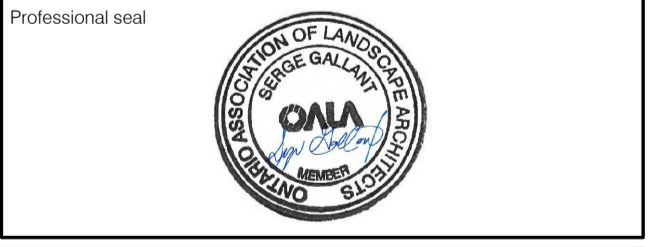
No	Description	Appr.	Date
1	Preliminary issue	S.G.	11/15/21
2	Site Plan Control	S.G.	12/10/21
3	Site Plan Control	S.G.	12/13/21
4	Site Plan Control	S.G.	12/15/21
5	Site Plan Control	S.G.	03/18/22
6	Site Plan Control	S.G.	06/23/22
7	Coordination plans - 99%	S.G.	08/26/22
8	Site Plan Control	S.G.	12/13/22
9	Site Plan Control	S.G.	02/24/23
10	Site Plan Control	S.G.	03/13/23

**DO NOT USE FOR CONSTRUCTION**

- Notes :**
- The Contractor must verify all site existing conditions before beginning the work and inform the Project Director of any errors, omissions or contradictions.
  - Existing grades indicated on the plan come from the survey provided by the owner.
  - The Contractor must not cut down any existing vegetation without the approval of the Project Director.
  - Implantation of the works on site must be approved by the Project Director.
  - The Contractor must use the CAD file for implantation of all work.
  - The contractor must verify the amounts specified in the schedule and notify the landscape architect of any errors, omissions or contradictions before the close of the bid.

**PROJET | PAYSAGE**

24 Mont-Royal O. Bureau 801 Montréal Québec H2T 2S2  
 T: 514.849.7700 F: 514.849.2027 info@projetpaysage.com



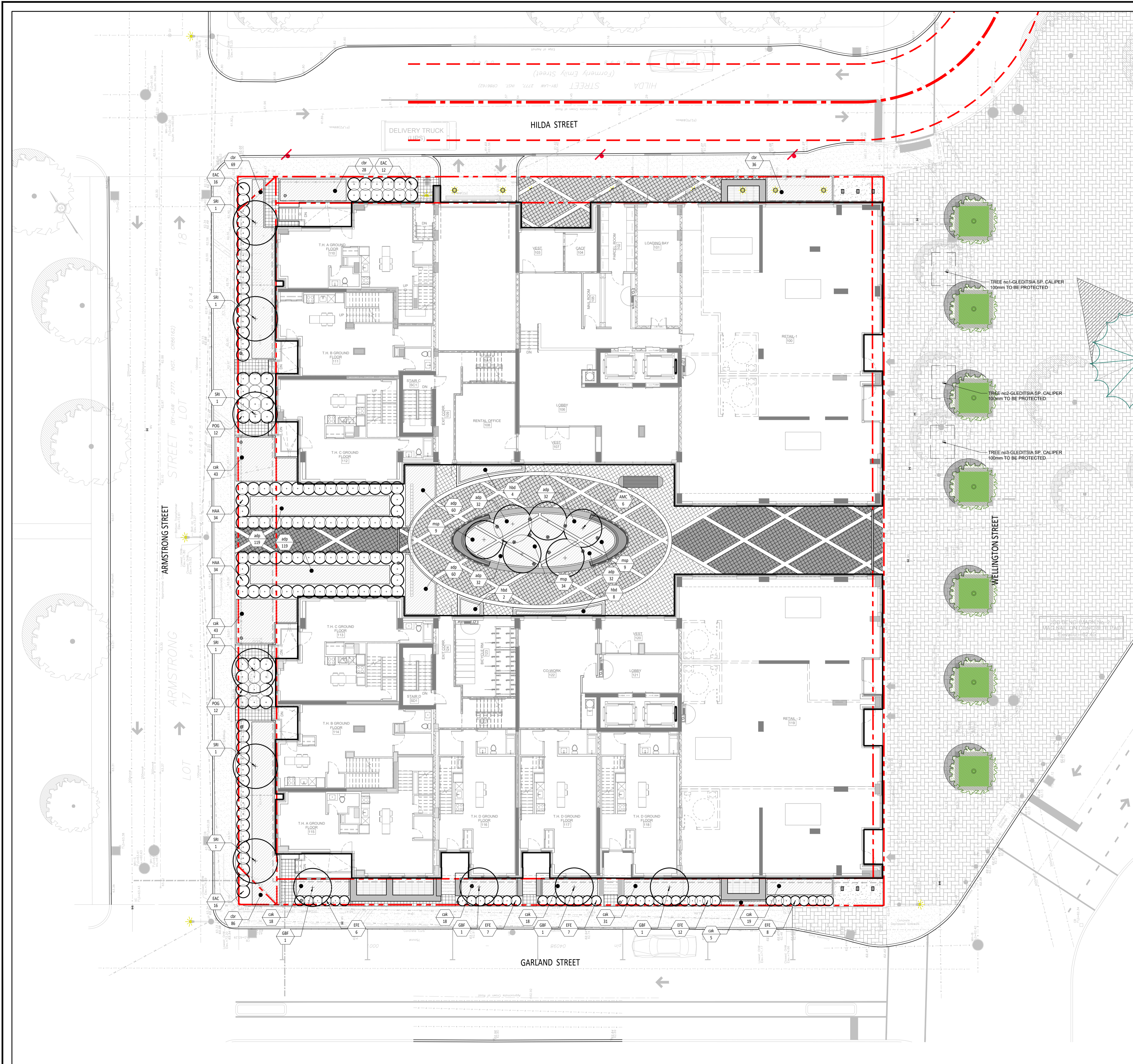
Project name  
**979, WELLINGTON  
 D017-12-21-0228**

Drawing title  
**DESCRIPTION PLAN**

Scale: 1:150

Designed by: S. Gallant  
 Drawn by: X. Benjamin  
 Approved by: S. Gallant  
 Date: November 2020

Sheet No.: **AP-20**  
 Plan No: 18841



**LEGEND**

- Lot limit
- - - Intervention limit
- Proposed deciduous trees and shrubs
- Proposed coniferous trees and shrubs
- ▨ Perennials and grasses
- Turf
- AA 000 Planting key

**PLANTING LIST**

Key	Qty	Latin name	Caliber
<b>DECIDUOUS TREES</b>			
GRF	4	Ginkgo biloba 'Fastigiat'	70mm see plan
AMC	6	Amelanchier canadensis en balle	50mm see plan
SRI	6	Syringa reticulata 'Ivory Silk'	70mm see plan
<b>DECIDUOUS SHRUBS</b>			
HAA	68	Hydrangea arb. 'Annabelle'	50cm see plan
EAC	44	Euconymus alatus 'Compactus'	50cm see plan
EFF	40	Euconymus tortu. 'Emerald Gandy'	50cm see plan
POG	24	Physocarpus opul. 'Diet's Gold'	40cm see plan
<b>FERNS</b>			
adp	486	Adiantum pedatum	pot 1 litre 40cm
mfp	52	Malthusia struthiopteris	pot 1 litre 60cm
<b>ORNAMENTAL GRASSES</b>			
ckk	190	Calamagrostis canadensis 'Karl Foerster'	pot 1 litre 60cm
cbr	224	Calamagrostis brachytricha	pot 1 litre 60cm
hbd	14	Hosta 'Big Daddy'	pot 1 litre 90cm

**MAGIL LAURENTIENNE**  
 ML Wellington Realty Investments Inc.  
 C/O ML DEVCO INC  
 651, Churchill Avenue N  
 Ottawa (Ontario) K1Z 5G2  
 Tel: 613-686-6319

**Revisions**

No	Description	Appr.	Date
1	Preliminary issue	S.G.	11/15/21
2	Site Plan Control	S.G.	12/10/21
3	Site Plan Control	S.G.	12/13/21
4	Site Plan Control	S.G.	12/15/21
5	Site Plan Control	S.G.	03/18/22
6	Site Plan Control	S.G.	06/23/22
7	Coordination plans - 99%	S.G.	08/26/22
8	Site Plan Control	S.G.	12/13/22
9	Site Plan Control	S.G.	02/24/23
10	Site Plan Control	S.G.	03/13/23

**DO NOT USE FOR CONSTRUCTION**

- Notes :**
- The Contractor must verify all site existing conditions before beginning the work and inform the Project Director of any errors, omissions or contradictions.
  - Existing grades indicated on the plan come from the survey provided by the owner.
  - The Contractor must not cut down any existing vegetation without the approval of the Project Director.
  - Implantation of the works on site must be approved by the Project Director.
  - The Contractor must use the CAD file for implantation of all work.
  - The contractor must verify the amounts specified in the schedule and notify the landscape architect of any errors, omissions or contradictions before the close of the bid.

**PROJET | PAYSAGE**

24 Mont-Royal O. Bureau 901 Montréal Québec H2T 2S2  
 T: 514.849.7700 F: 514.849.2027 info@projetpaysage.com



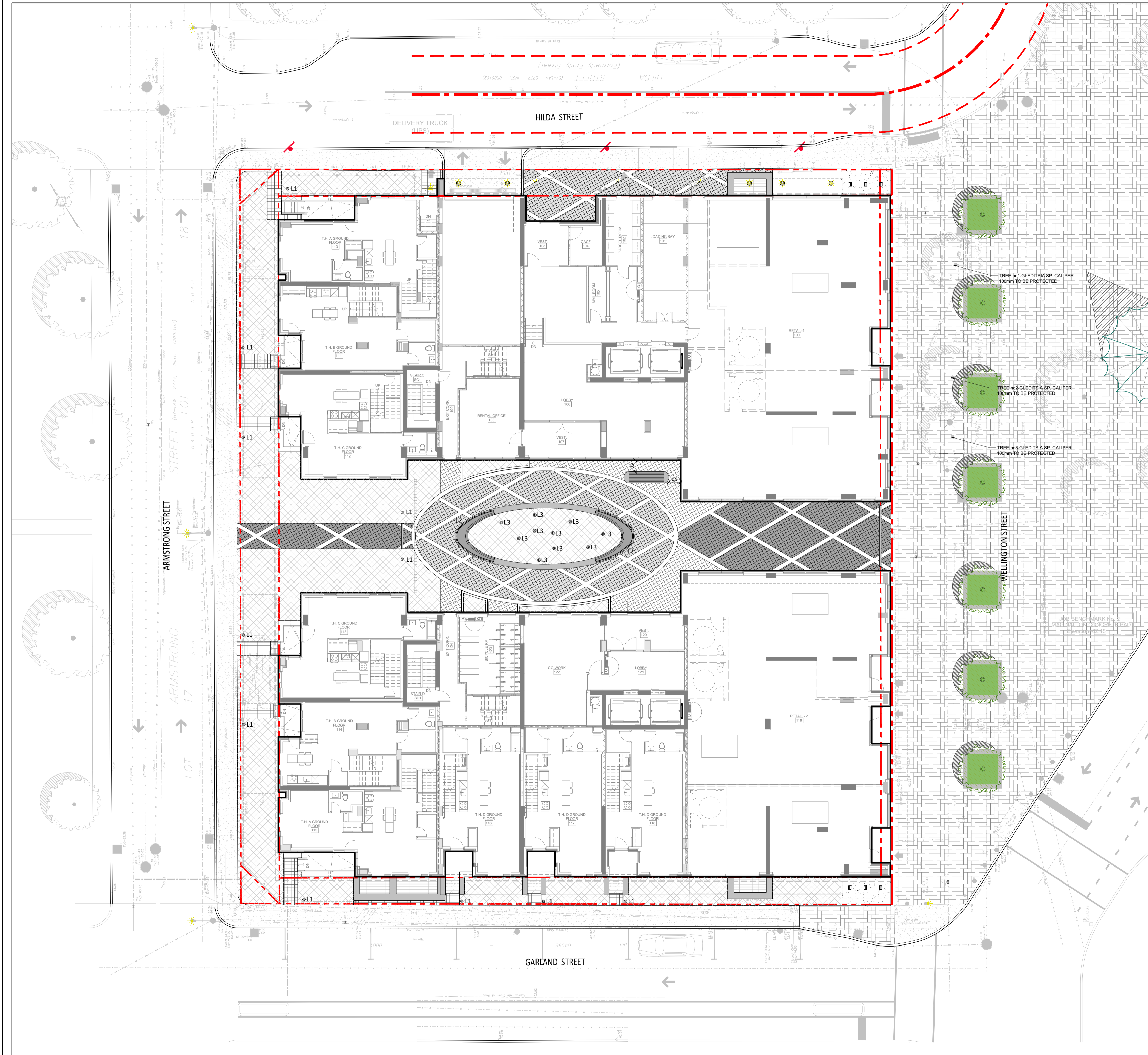
Project name  
**979, WELLINGTON  
 D017-12-21-0228**

Drawing title  
**PLANTING PLAN**

1:150

Designed by: S. Gallant  
 Drawn by: X. Benjamin  
 Approved by: S. Gallant  
 Date: November 2020

Sheet No.: **AP-30**  
 Plan No: 18841



**LEGENDE**

--- Lot limit  
 --- Intervention limit

**LIGHTING**

Code	Qty	Model
L1	11	BOLLARD Model: 77743 Bollard from BEGA Lighting Colour: BEGA Black Fixing: As specified by supplier
L2	15m	LED STRIP LIGHTING Model: To be determined Colour: To be determined Fixing: To be determined
L3	10	GARDEN FLOODLIGHT Model: 84 067 Floodlight with earth spike from BEGA Lighting Colour: BEGA Black Fixing: As specified by supplier

**IRRIGATION**

Planting areas to be irrigated. Drip irrigation system.

**MAGIL LAURENTIENNE**  
 ML Wellington Realty Investments Inc.  
 610 ML DEVCO INC  
 651, Churchill Avenue N  
 Ottawa (Ontario) K1Z 5G2  
 Tel: 613-686-6319

**Revisions**

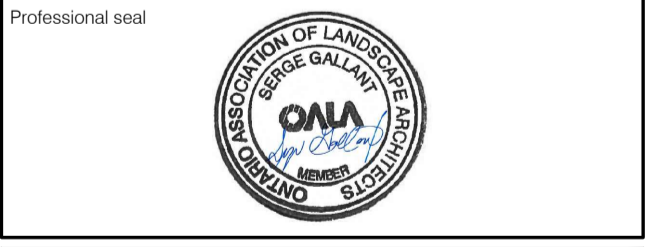
No	Description	Appr.	Date
1	Preliminary issue	S.G.	11/15/21
2	Site Plan Control	S.G.	12/10/21
3	Site Plan Control	S.G.	12/13/21
4	Site Plan Control	S.G.	12/15/21
5	Site Plan Control	S.G.	03/18/22
6	Site Plan Control	S.G.	06/23/22
7	Coordination plans - 99%	S.G.	08/26/22
8	Site Plan Control	S.G.	12/13/22
9	Site Plan Control	S.G.	02/24/23
10	Site Plan Control	S.G.	03/13/23

**DO NOT USE FOR CONSTRUCTION**

- Notes :**
- The Contractor must verify all site existing conditions before beginning the work and inform the Project Director of any errors, omissions or contradictions.
  - Existing grades indicated on the plan come from the survey provided by the owner.
  - The Contractor must not cut down any existing vegetation without the approval of the Project Director.
  - Implantation of the works on site must be approved by the Project Director.
  - The Contractor must use the CAD file for implantation of all work.
  - The contractor must verify the amounts specified in the schedule and notify the landscape architect of any errors, omissions or contradictions before the close of the bid.

**PROJET | PAYSAGE**

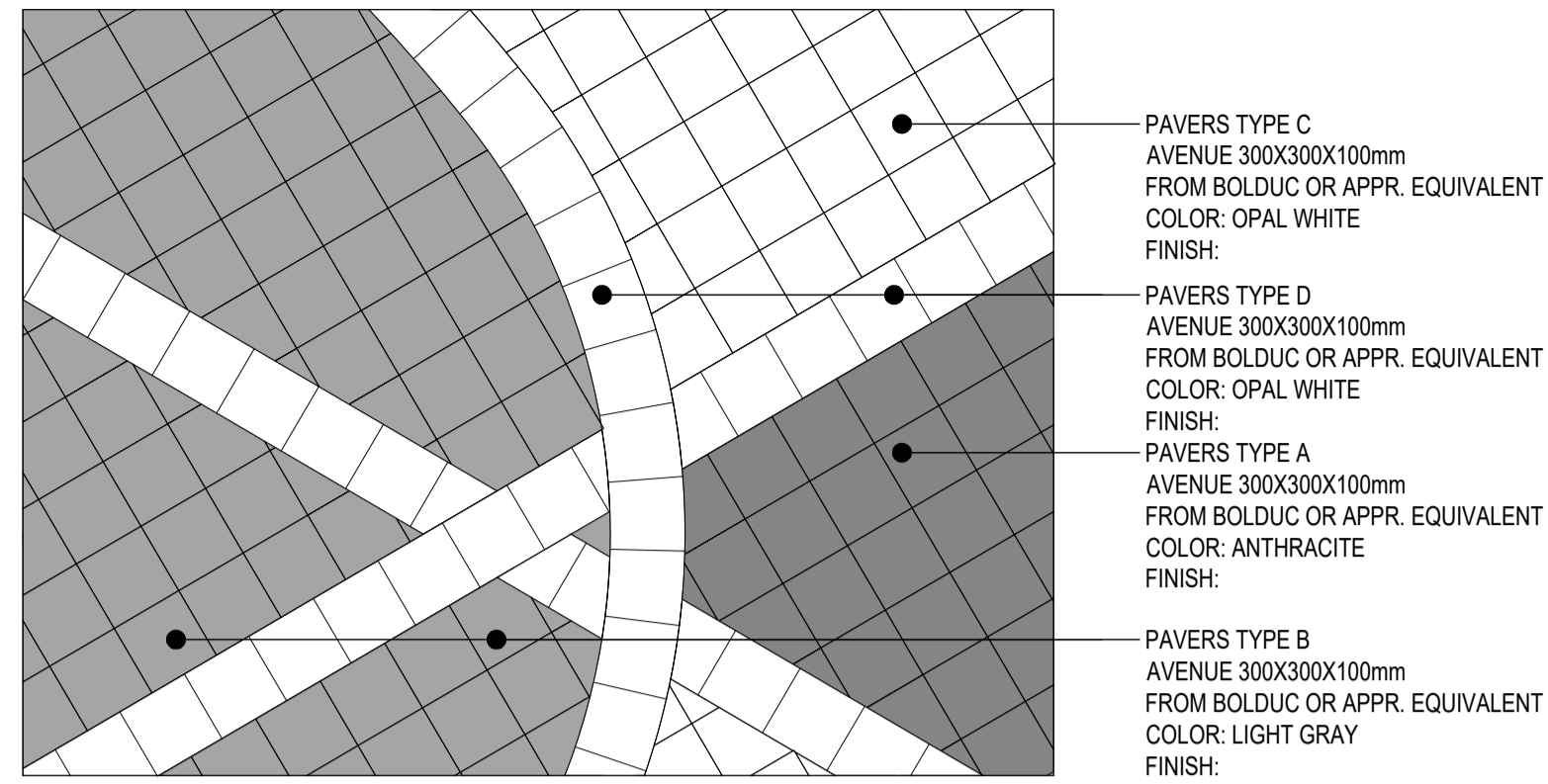
24 Mont-Royal O. Bureau 901 Montréal Québec H2T 2S2  
 T: 514.849.7700 F: 514.849.2027 info@projetpaysage.com



Project name  
**979, WELLINGTON  
 D017-12-21-0228**

Drawing title  
**LIGHTING AND IRRIGATION PLAN**

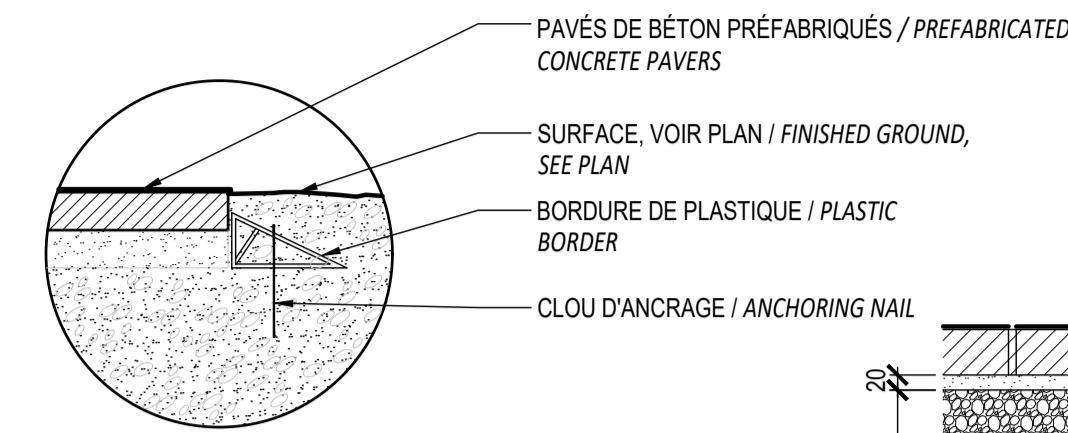
Designed by: S. Gallant	Sheet No.:
Drawn by: X. Benjamin	<b>AP-40</b>
Approved by: S. Gallant	
Date: November 2020	
Plan No: 18841	



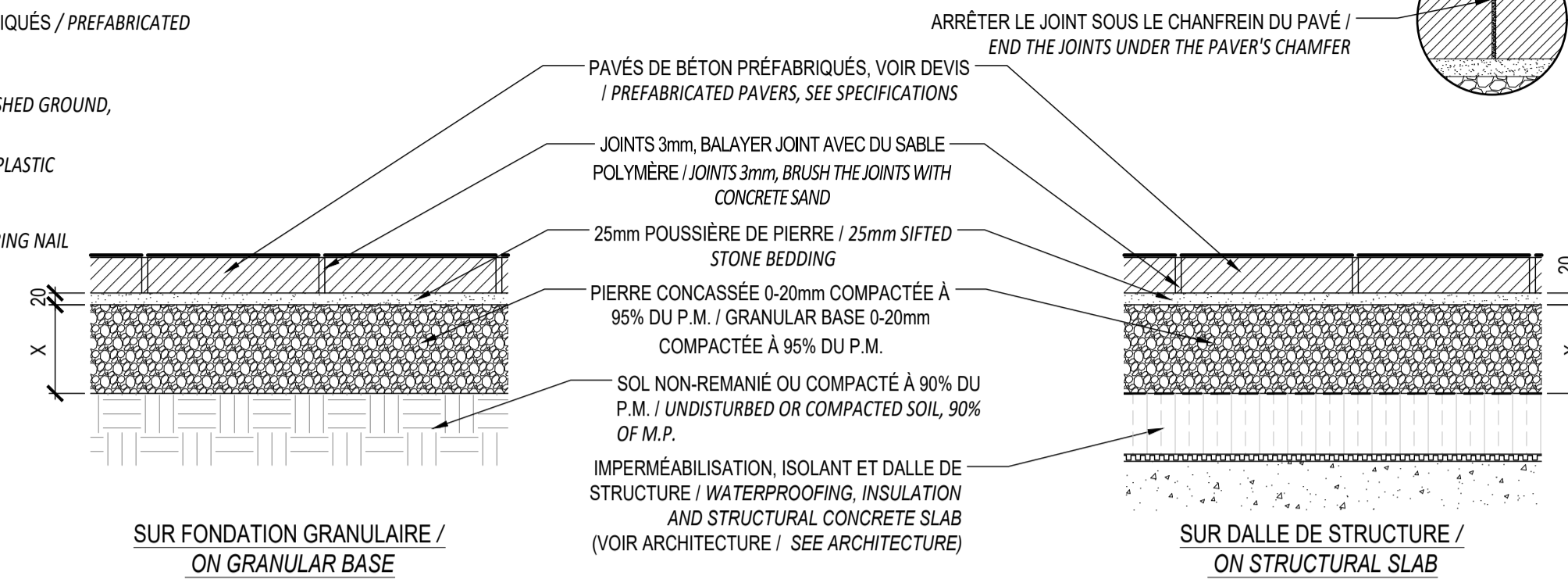
VUE EN PLAN / PLAN VIEW  
ÉCHELLE 1:30 / SCALE 1:30

**1 PAVÉS DE BÉTON PRÉFABRIQUÉS TYPE / TYPICAL PREFABRICATED PAVERS**  
Échelle / Scale 1:10

NOTE:  
- SE RÉFÉRER AUX SPÉCIFICATIONS POUR LES DIRECTIVES D'INSTALLATION / REFER TO SPECIFICATIONS FOR INSTALLATION GUIDELINES  
- LA LARGEUR DE PAVÉS NE PEUT PAS ÊTRE INFÉRIEURE À 1/3 DE LA LONGUEUR INITIALE UNE FOIS COUPÉE / THE WIDTH OF THE PAVERS MAY NOT BE LESS THAN 1/3 OF THE LENGTH ONCE CUT

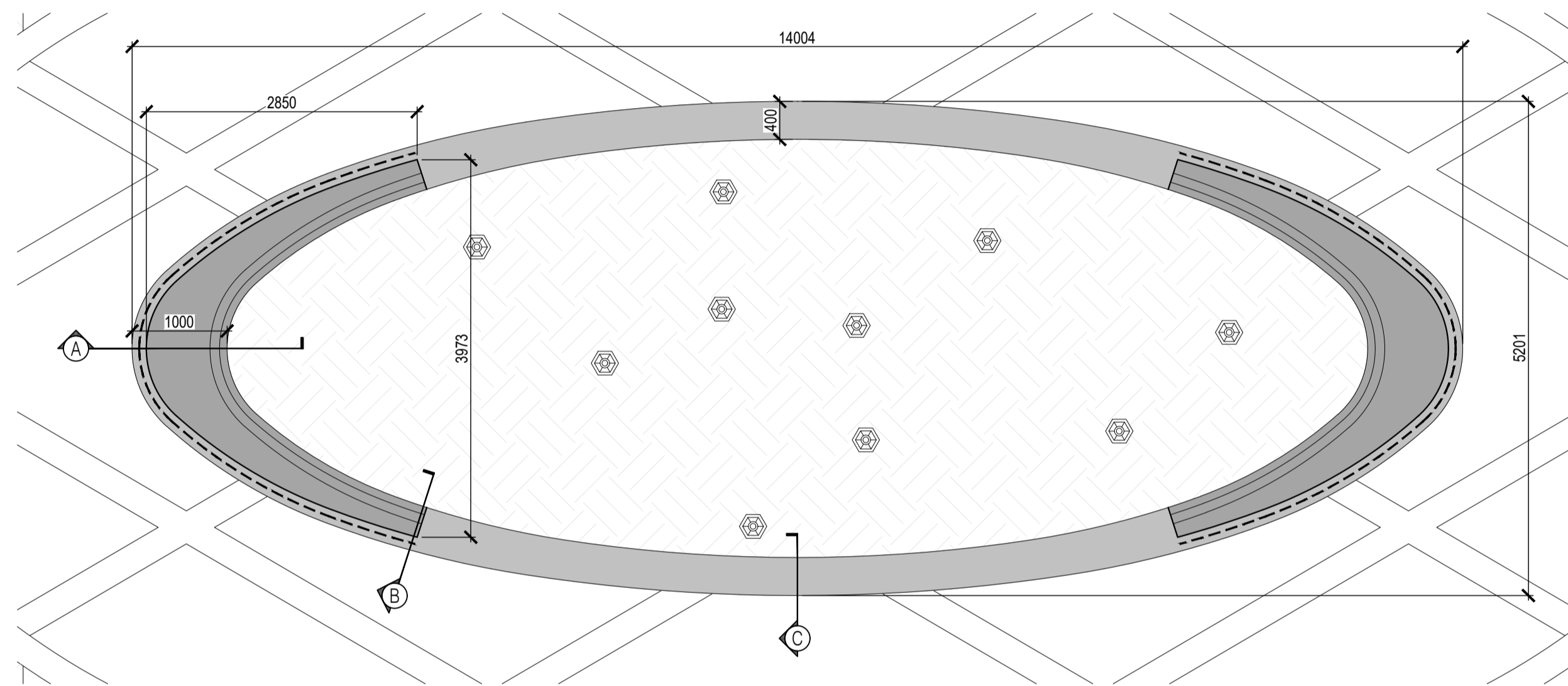


X:  
- 150mm, TOUTES LES SURFACES SAUF VOIE POUVANT ÊTRE UTILISÉE PAR DES VÉHICULES DE LIVRAISON OU D'INCENDIE / 150mm FOR ALL SURFACES THAT ARE NOT USED BY AUTOMOBILES, DELIVERY VEHICLES OR EMERGENCY VEHICLES  
- 300mm POUR VOIE UTILISÉE PAR DES VÉHICULES DE LIVRAISON OU D'INCENDIE / 300mm FOR ALL ROADS ACCESSIBLE BY DELIVERY VEHICLES OR EMERGENCY VEHICLES. SEE CIVIL



SUR FONDATION GRANULAIRE / ON GRANULAR BASE

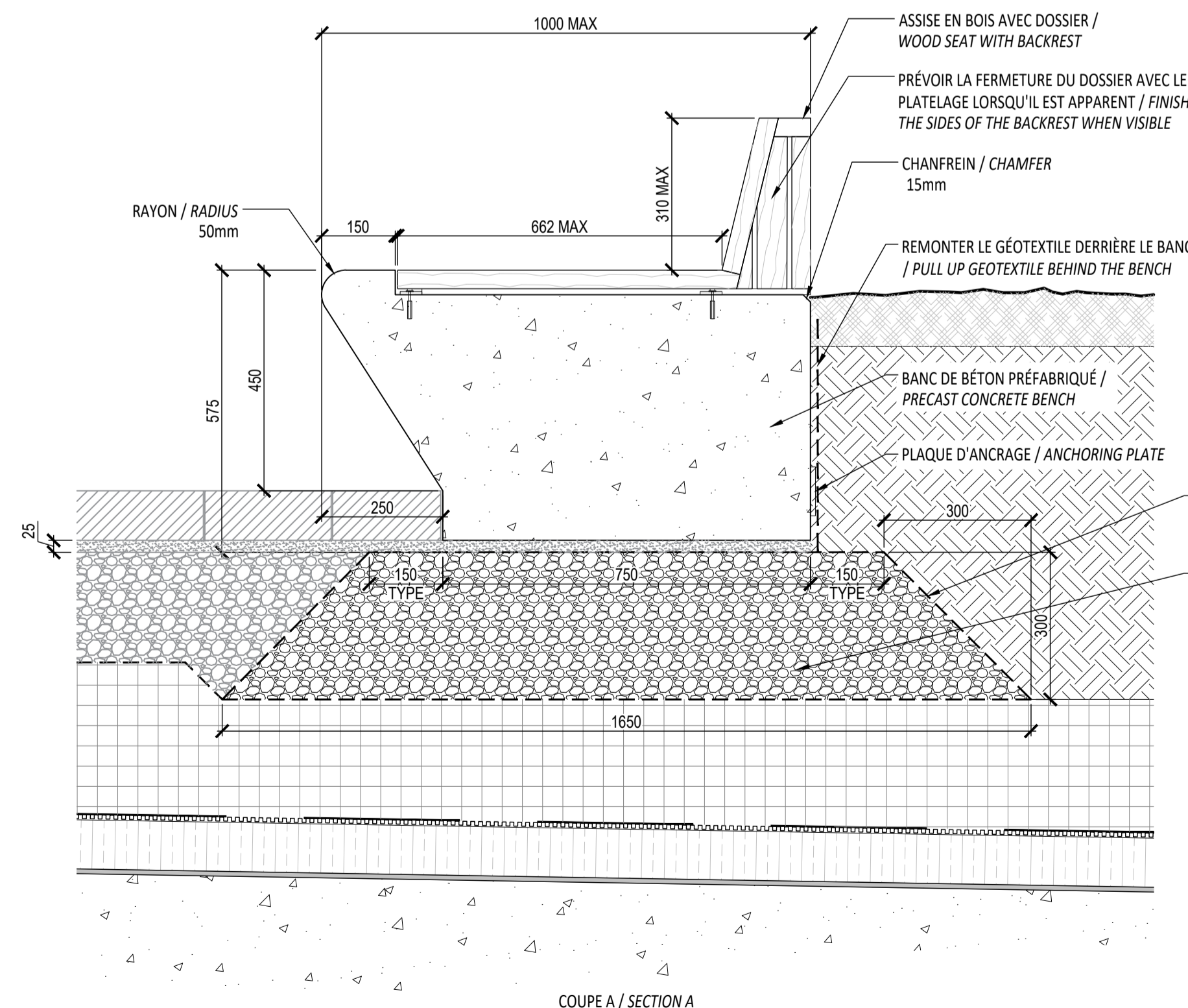
SUR DALLE DE STRUCTURE / ON STRUCTURAL SLAB



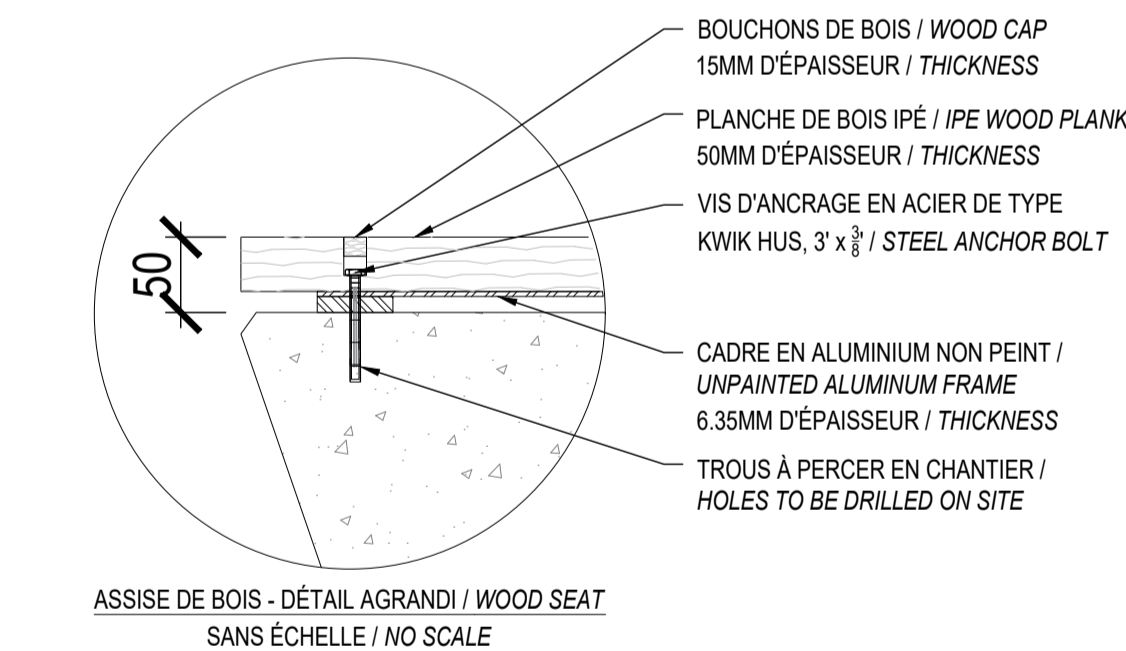
VUE EN PLAN / PLAN VIEW  
ÉCHELLE 1:50 / SCALE 1:50

NOTES:

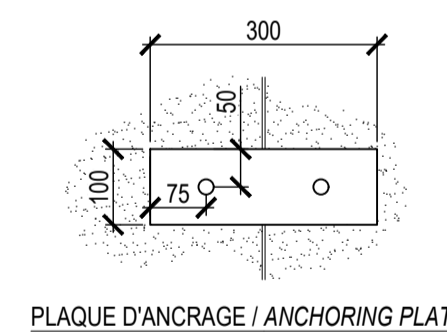
- BÉTON COULÉ EN USINE / CONCRETE CAST AT FACTORY;
- LE BANC DE BÉTON PRÉFABRIQUÉ SERA DE COULEUR \_\_\_\_\_ (FOURNIR UN ÉCHANTILLON POUR APPROBATION) / CONCRETE BENCH COLOR WILL BE \_\_\_\_\_ (PROVIDE SAMPLE FOR APPROBATION);
- LES SURFACES APPARENTES DOIVENT ÊTRE FINIES AU JET DE SABLE LÉGER / CONCRETE SURFACES MUST BE FINISHED WITH A LIGHT SANDBLAST;
- INSTALLATION SELON LES RECOMMANDATIONS DU FABRICANT / INSTALLATION ACCORDING TO MANUFACTURER'S RECOMMENDATIONS;
- L'ENTREPRENEUR DOIT FOURNIR POUR APPROBATION DES DESSINS D'ATELIER DÉTAILLÉS, CÔTÉS, SCÉLLÉS ET SIGNÉS PAR INGÉNIEUR CERTIFIÉ / CONTRACTOR MUST PROVIDE DRAWINGS SEALED AND SIGNED BY A CERTIFIED ENGINEER;
- PRÉVOIR EN USINE LES ÉLÉMENTS D'ANCRAGE AUX MODULES AFIN DE LES CONNECTER LES UNS AUX AUTRES. LA FIXATION NE DOIT PAS ÊTRE APPARENTE. FAIRE APPROUVER LE MODE DE FIXATION PAR LE DIRECTEUR DE PROJET. PRÉVOIR UNE ENCAVURE DANS LES MODULES DE BÉTON / PROVIDE, AT THE FACTORY, THE ANCHORING ELEMENTS IN ORDER TO CONNECT THE CONCRETE MODULES TO ONE ANOTHER. THE ATTACHMENT MUST NOT BE APPARENT. HAVE THE FIXING MODE APPROVED BY THE PROJECT MANAGER. PROVIDE A CAVURE IN THE CONCRETE MODULES;
- PRÉVOIR UNE PENTE DE 1% SUR TOUTES LES SURFACES HORIZONTALES POUR PERMETTRE L'ÉCOULEMENT DE L'EAU / LEVEL ALL HORIZONTAL SURFACES AS TO KEEP A 1% SLOPE TO ALLOW WATER DRAINAGE



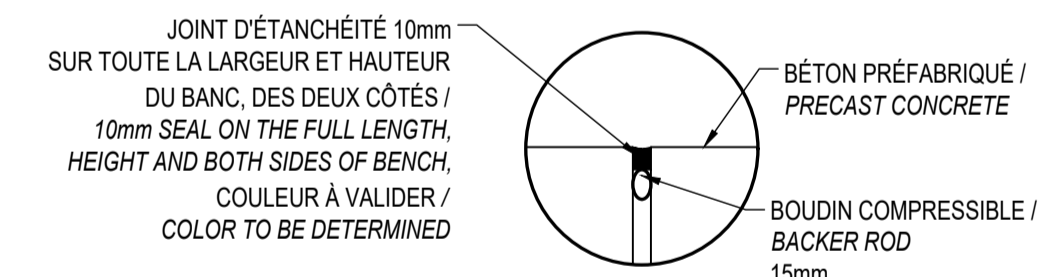
COUPE A / SECTION A



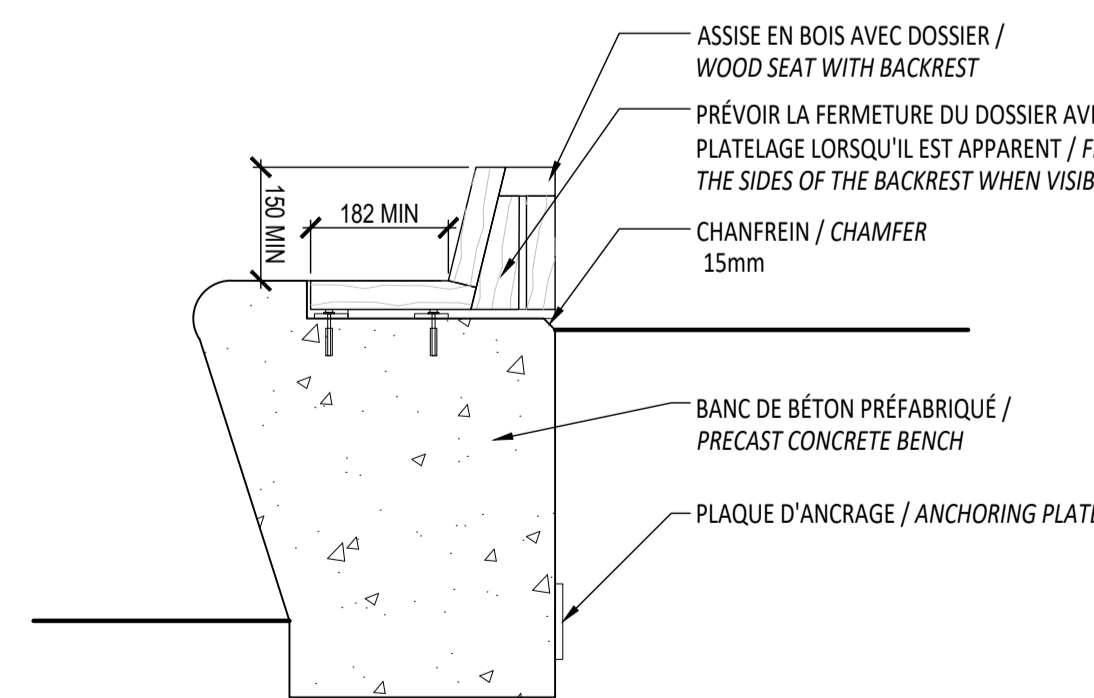
ASSISE DE BOIS - DÉTAIL AGRANDI / WOOD SEAT SANS ÉCHELLE / NO SCALE



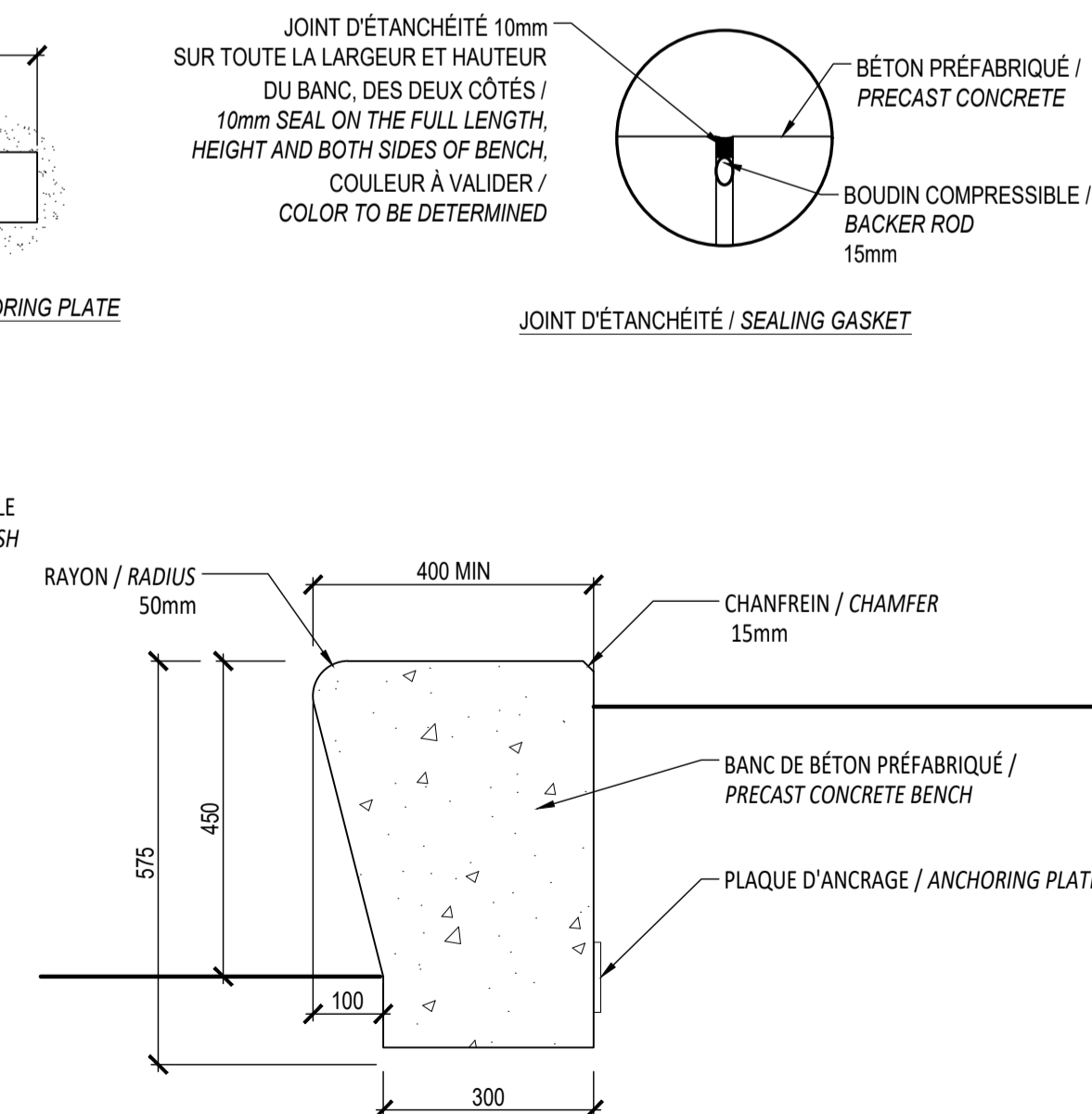
PLAQUE D'ANCRAGE / ANCHORING PLATE



JOINT D'ÉTANCHÉITÉ / SEALING GASKET



COUPE B / SECTION B



COUPE C / SECTION C

**10 BANC MODULAIRE DE BÉTON PRÉFABRIQUÉ / MODULAR PRECAST CONCRETE BENCH**  
Échelle / Scale 1:10

Revisions			
No	Description	Appr.	Date
1	Preliminary issue	S.G.	11/15/21
2	Site Plan Control	S.G.	12/10/21
3	Site Plan Control	S.G.	12/13/21
4	Site Plan Control	S.G.	12/15/21
5	Site Plan Control	S.G.	03/18/22
6	Site Plan Control	S.G.	06/23/22
7	Coordination plans - 99%	S.G.	08/26/22
8	Site Plan Control	S.G.	12/13/22
9	Site Plan Control	S.G.	02/24/23
10	Site Plan Control	S.G.	03/13/23

**DO NOT USE FOR CONSTRUCTION**

Notes :

- 1- The Contractor must verify all site existing conditions before beginning the work and inform the Project Director of any errors, omissions or contradictions.
- 2- Existing grades indicated on the plan come from the survey provided by the owner.
- 3- The Contractor must not cut down any existing vegetation without the approval of the Project Director.
- 4- Implantation of the works on site must be approved by the Project Director.
- 5- The Contractor must use the CAD file for implantation of all work.
- 6- The contractor must verify the amounts specified in the schedule and notify the landscape architect of any errors, omissions or contradictions before the close of the bid.

**PROJET | PAYSAGE**

24 Mont-Royal O. Bureau 901 Montréal Québec H2T 2S2  
T: 514.849.7700 F: 514.849.2027 info@projetpaysage.com

Professional seal

Project name  
**979, WELLINGTON  
D017-12-21-0228**

Drawing title  
**CONSTRUCTION DETAILS**

Indicated scales

Designed by:  
S. Gallant

Drawn by:  
X. Benjamin

Approved by:  
S. Gallant

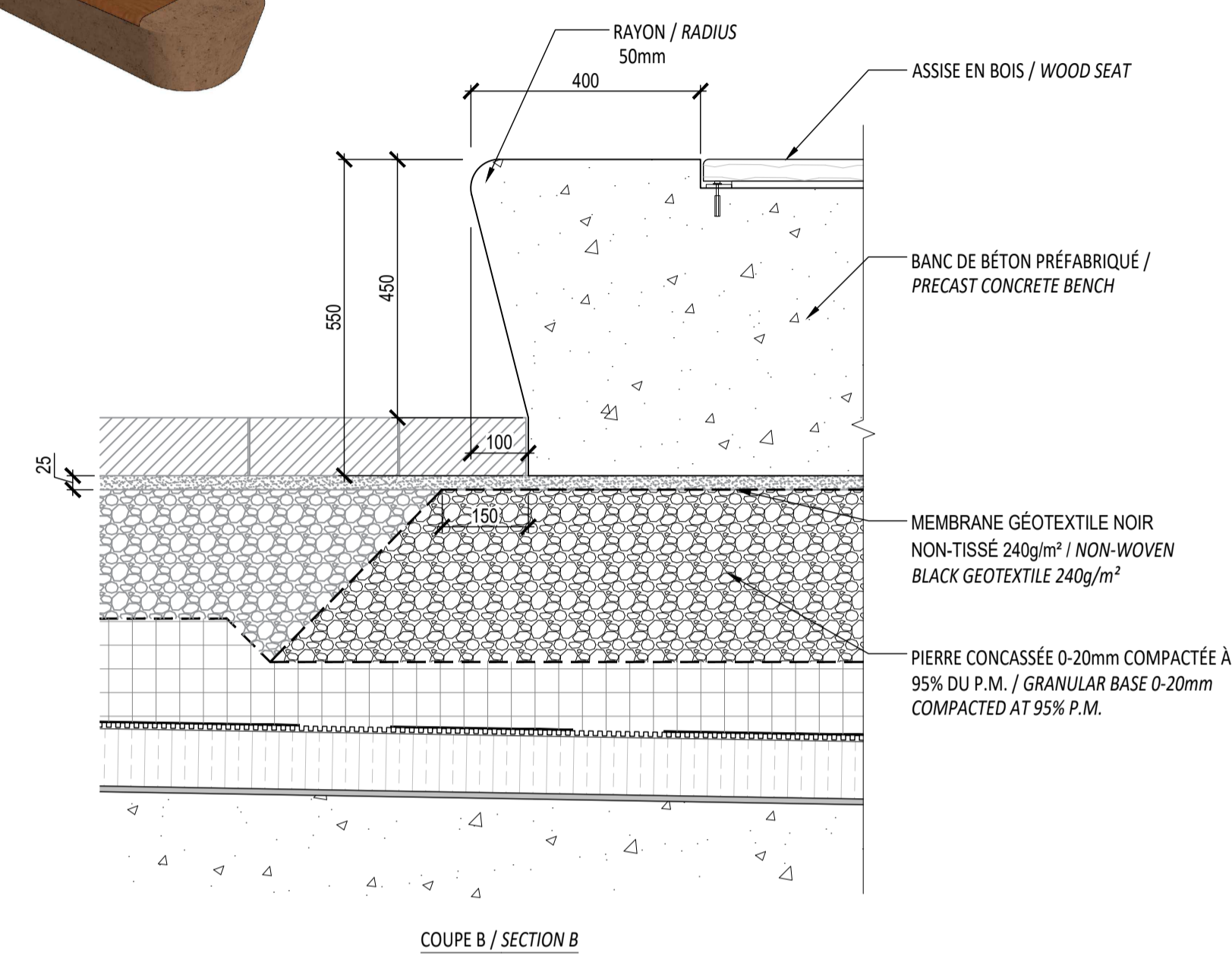
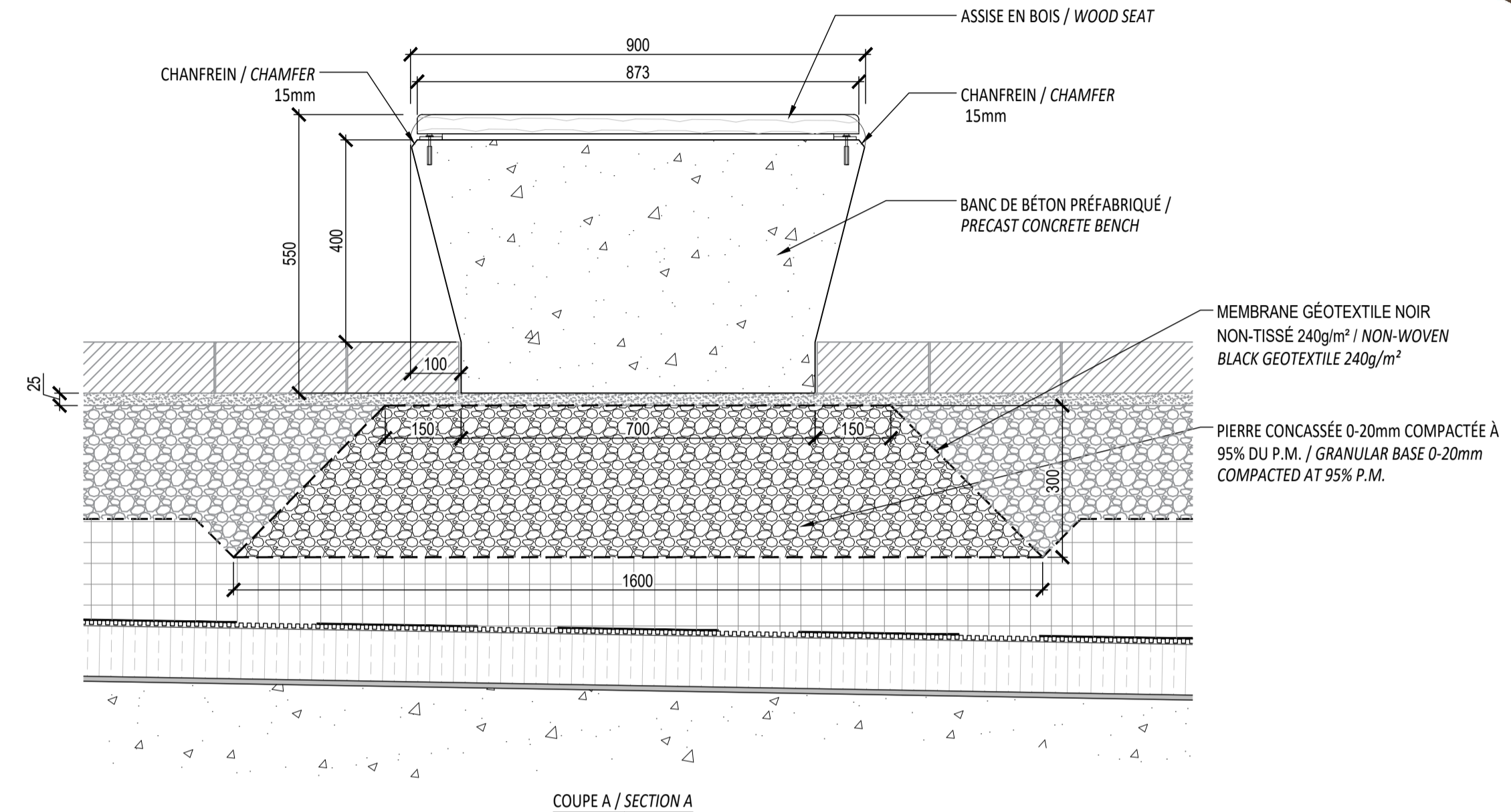
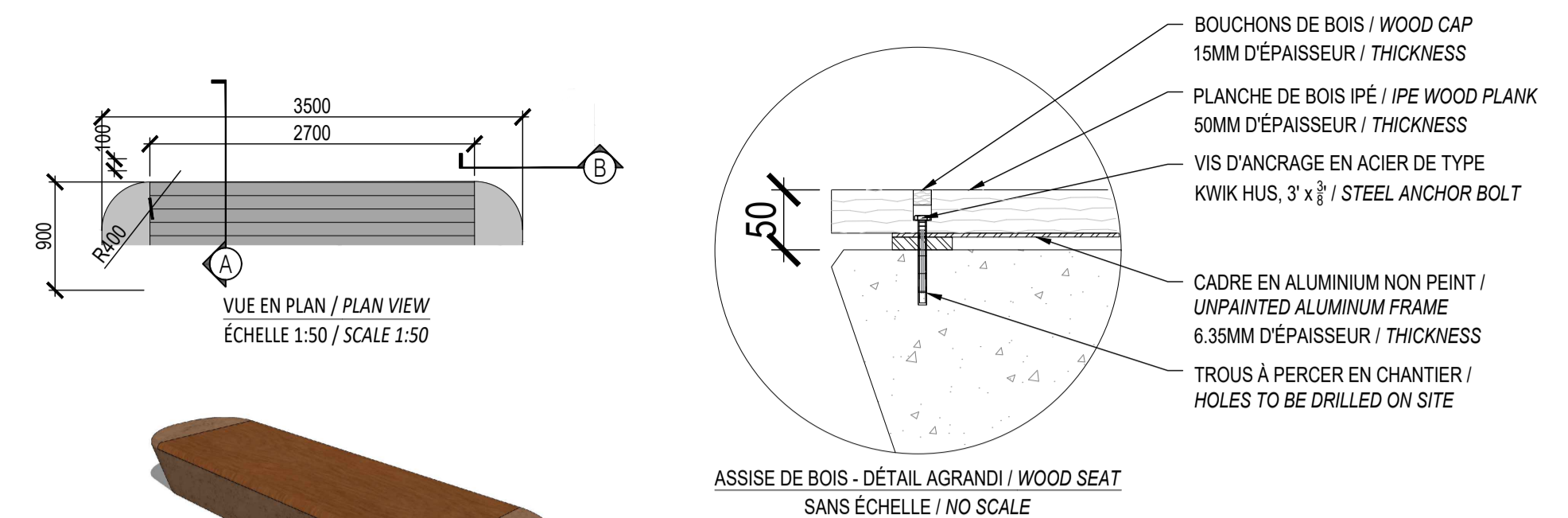
Date:  
November 2020

Plan No: 18841

Sheet No:  
**AP-50**

**NOTES:**

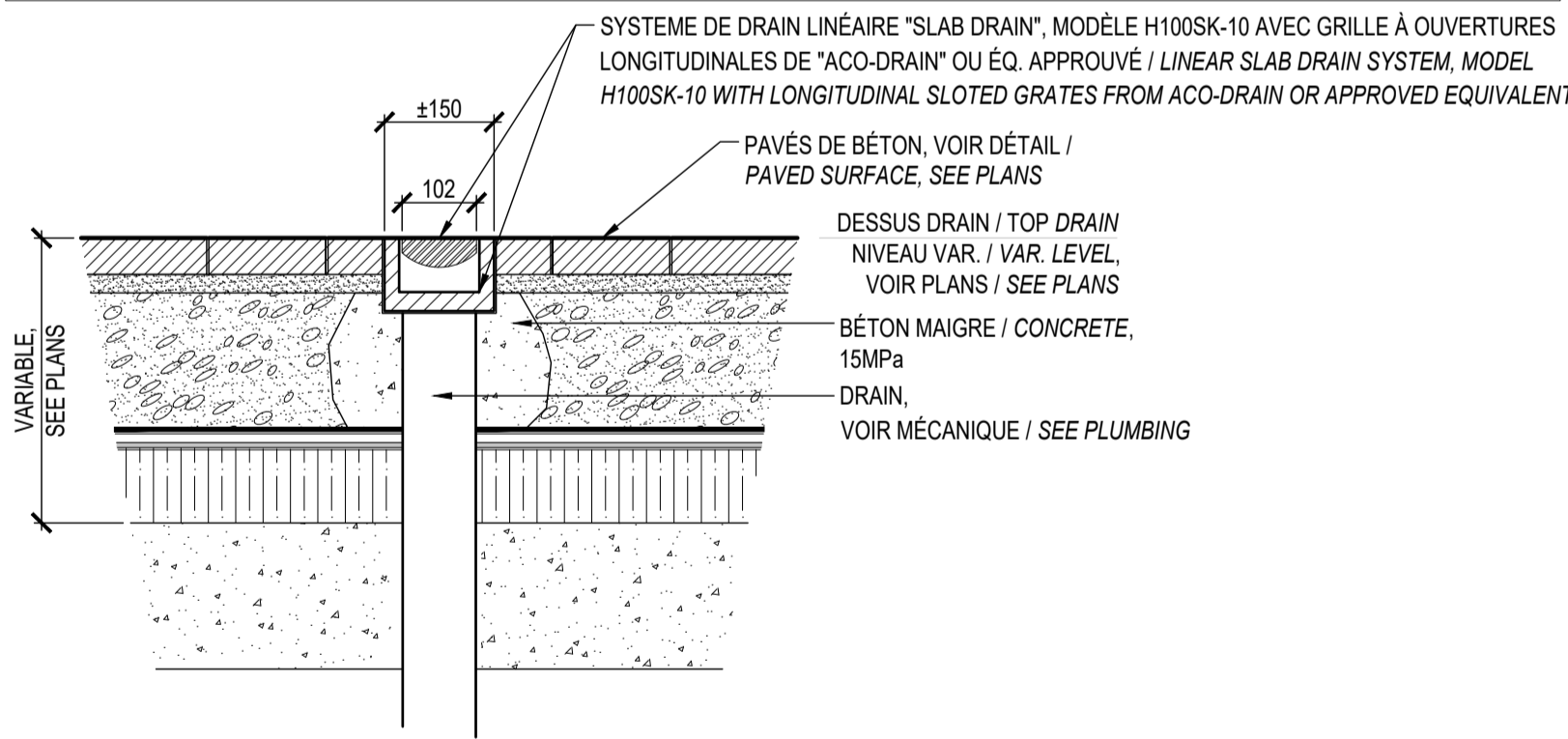
- BÉTON COULÉ EN USINE / CONCRETE CAST AT FACTORY;
- LE BANC DE BÉTON PRÉFABRIQUÉ SERA DE COULEUR \_\_\_\_\_ (FOURNIR UN ÉCHANTILLON POUR APPROBATION) / CONCRETE BENCH COLOR WILL BE \_\_\_\_\_ (PROVIDE SAMPLE FOR APPROBATION);
- LES SURFACES APPARENTES DOIVENT ÊTRE FINIES AU JET DE SABLE LÉGER / CONCRETE SURFACES MUST BE FINISHED WITH A LIGHT SANDBLAST;
- INSTALLATION SELON LES RECOMMANDATIONS DU FABRICANT / INSTALLATION ACCORDING TO MANUFACTURER'S RECOMMENDATIONS;
- L'ENTREPRENEUR DOIT FOURNIR POUR APPROBATION DES DESSINS D'ATELIER DÉTAILLÉS, CÔTÉS, SCÉLLÉS ET SIGNÉS PAR INGÉNIEUR CERTIFIÉ / CONTRACTOR MUST PROVIDE DRAWINGS SEALED AND SIGNED BY A CERTIFIED ENGINEER;
- PRÉVOIR EN USINE LES ÉLÉMENTS D'ANCRAGE AUX MODULES AFIN DE LES CONNECTER LES UNS AUX AUTRES. LA FIXATION NE DOIT PAS ÊTRE APPARENTE. FAIRE APPROUVER LE MODE DE FIXATION PAR LE DIRECTEUR DE PROJET. PRÉVOIR UNE ENCAVURE DANS LES MODULES DE BÉTON / PROVIDE, AT THE FACTORY, THE ANCHORING ELEMENTS IN ORDER TO CONNECT THE CONCRETE MODULES TO ONE ANOTHER. THE ATTACHMENT MUST NOT BE APPARENT. HAVE THE FIXING MODE APPROVED BY THE PROJECT MANAGER. PROVIDE A CAVURE IN THE CONCRETE MODULES;
- PRÉVOIR UNE PENTE DE 1% SUR TOUTES LES SURFACES HORIZONTALES POUR PERMETTRE L'ÉCOULEMENT DE L'EAU / LEVEL ALL HORIZONTAL SURFACES AS TO KEEP A 1% SLOPE TO ALLOW WATER DRAINAGE



11 BANC DE BÉTON PRÉFABRIQUÉ / PRECAST CONCRETE BENCH  
Échelle / Scale 1:10

**NOTES:**

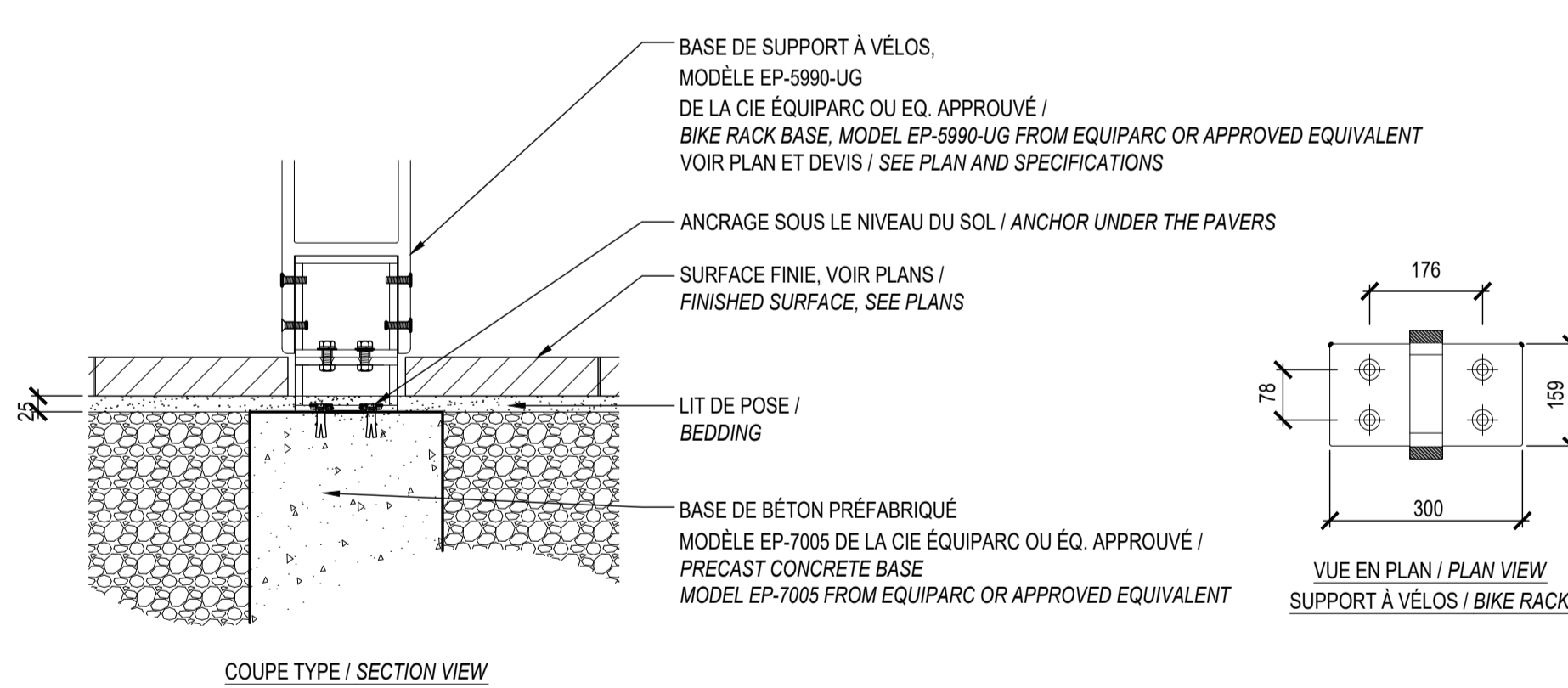
- METTRE EN PLACE LES CONDUITES VERTICALES ET LES TÊTES DE PUISARDS SUR LE PANNEAU DRAINANT DE MANIÈRE À ASSURER L'ÉCOULEMENT DES EAUX SUR LA DALLE VERS LE DRAIN DE TOIT. / INSTALL VERTICAL PIPES AND DRAIN HEADS ON DRAINAGE MEMBRANE AS TO ASSURE WATER DRAINAGE TO THE ROOF DRAINS.



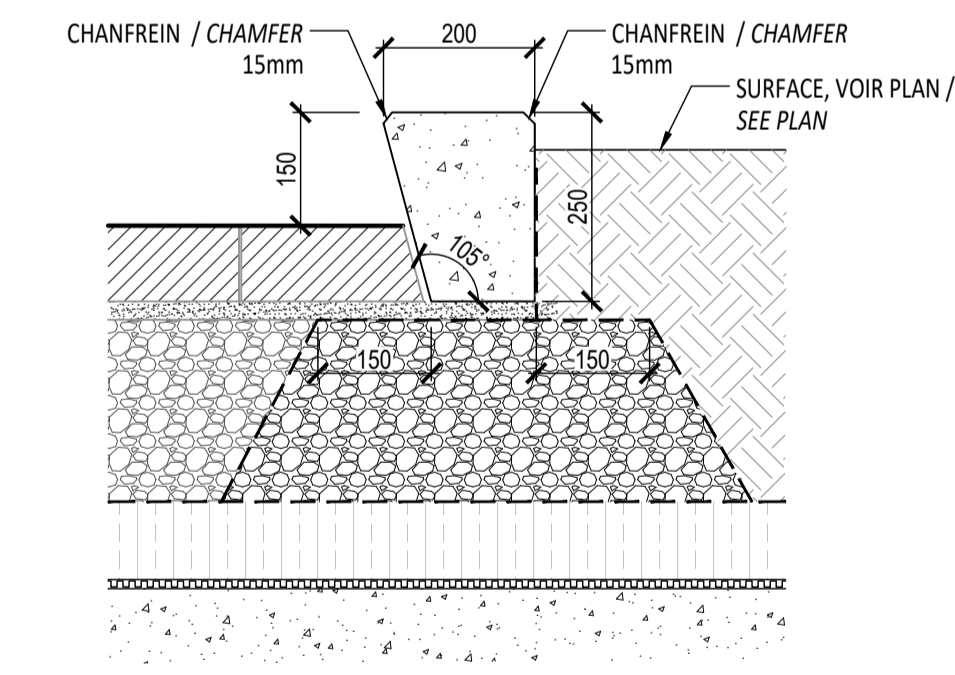
32 CANIVEAU / TRENCH DRAIN  
Échelle 1:10 / Scale 1:10

**NOTES:**

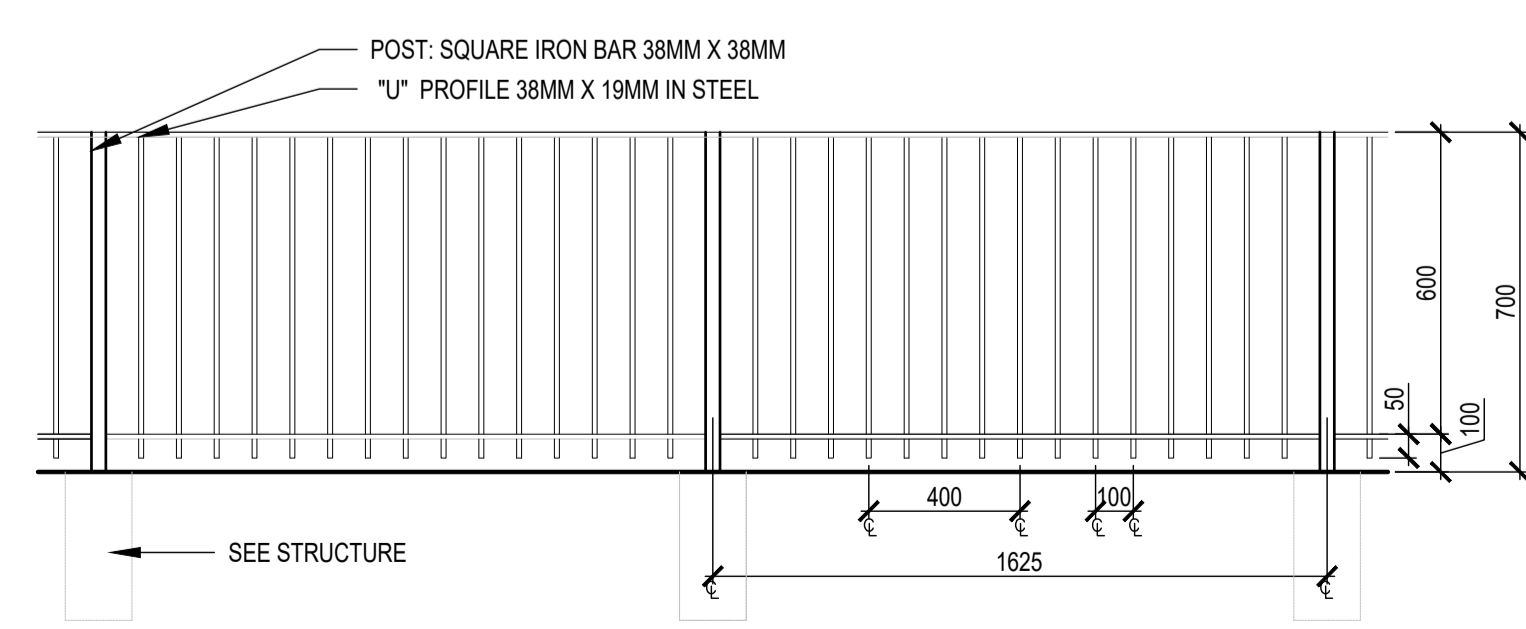
- PRÉVOIR ANCRAGE ET QUINCAILLERIE ANTI-VOL / PROVIDE ANTI-THEFT ANCHORING AND HARDWARE
- INSTALLATION SELON LES RECOMMANDATIONS DU FOURNISSEUR / INSTALL ACCORDING TO MANUFACTURER'S RECOMMENDATIONS



31 SUPPORT À VÉLOS / BIKE RACKS  
Échelle 1:10 / Scale 1:10



12 BORDURE DE BÉTON PRÉFABRIQUÉ / PRECAST CONCRETE CURB  
Échelle / Scale 1:10



33 ROUGH IRON DECORATIVE FENCE  
Échelle / Scale 1:10

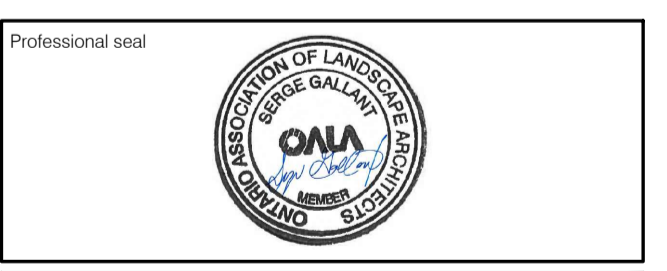
Revisions			
No	Description	Appr.	Date
1	Preliminary issue	S.G.	11/15/21
2	Site Plan Control	S.G.	12/10/21
3	Site Plan Control	S.G.	12/13/21
4	Site Plan Control	S.G.	12/15/21
5	Site Plan Control	S.G.	03/18/22
6	Site Plan Control	S.G.	06/23/22
7	Coordination plans - 99%	S.G.	08/26/22
8	Site Plan Control	S.G.	12/13/22
9	Site Plan Control	S.G.	02/24/23
10	Site Plan Control	S.G.	03/13/23

**DO NOT USE FOR CONSTRUCTION**

- Notes:**
- The Contractor must verify all site existing conditions before beginning the work and inform the Project Director of any errors, omissions or contradictions.
  - Existing grades indicated on the plan come from the survey provided by the owner.
  - The Contractor must not cut down any existing vegetation without the approval of the Project Director.
  - Implementation of the works on site must be approved by the Project Director.
  - The Contractor must use the CAD file for implantation of all work.
  - The contractor must verify the amounts specified in the schedule and notify the landscape architect of any errors, omissions or contradictions before the close of the bid.

**PROJET | PAYSAGE**

24 Mont-Royal O. Bureau 901 Montréal Québec H2T 2S2  
T: 514.849.7700 F: 514.849.2027 info@projetpaysage.com



Project name  
**979, WELLINGTON  
D017-12-21-0228**

Drawing title  
**CONSTRUCTION DETAILS**

Indicated scales

Designed by:  
S. Gallant

Drawn by:  
X. Benjamin

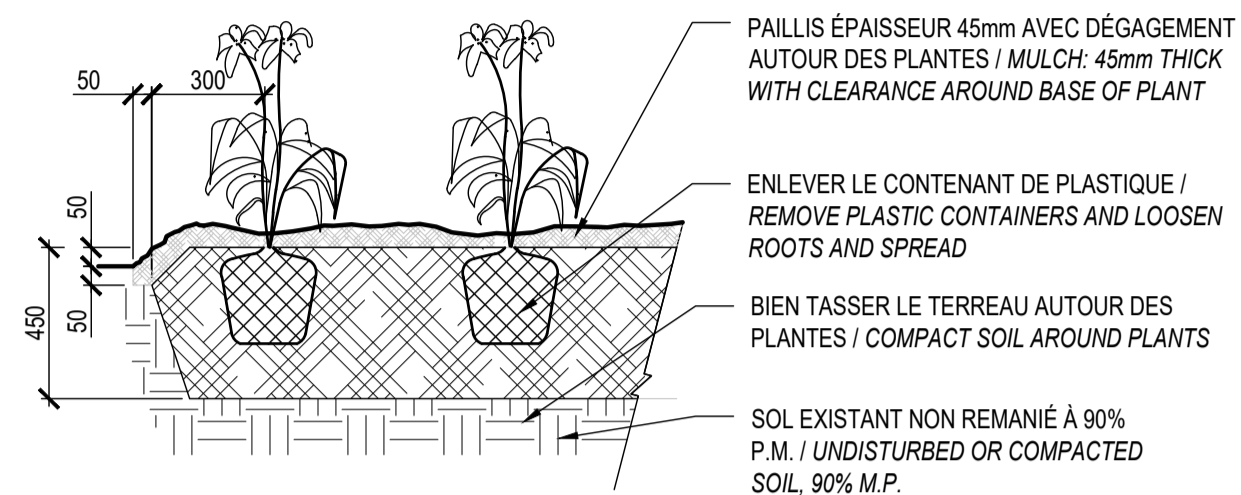
Approved by:  
S. Gallant

Date:  
November 2020

Sheet No.:  
**AP-51**

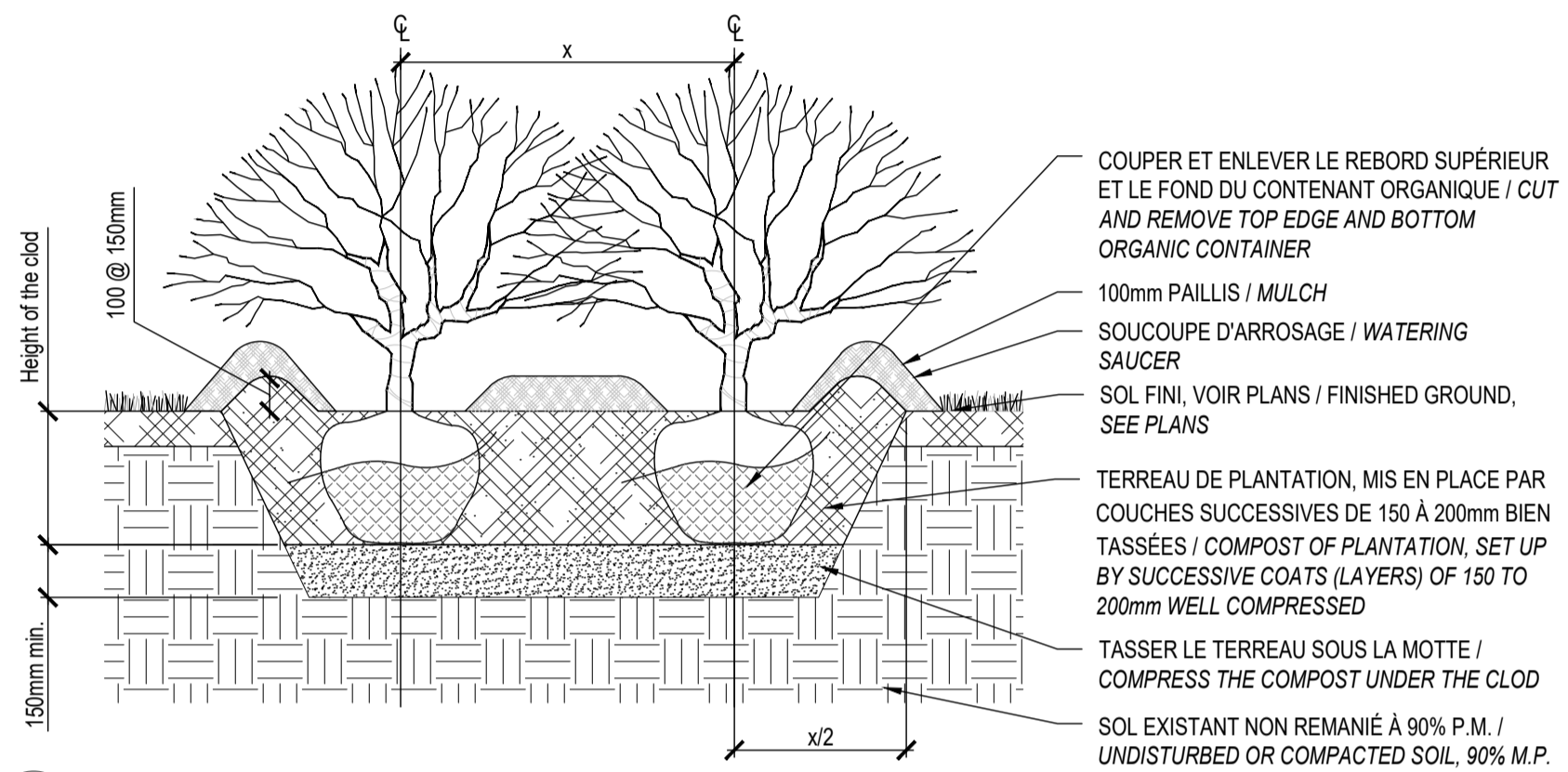
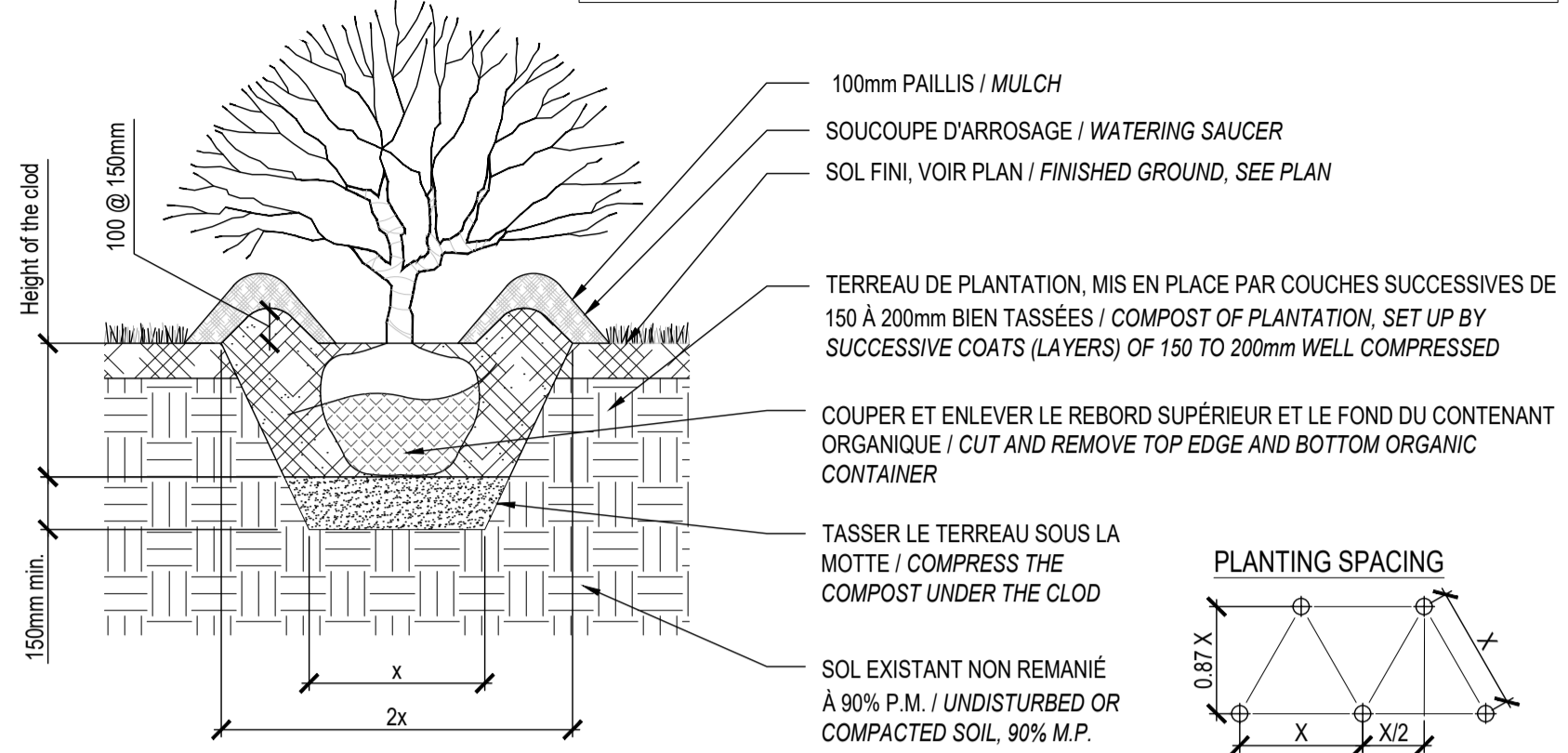
Plan No: 18841

**NOTE:**  
 - LES VIVACES SONT TOUJOURS PLANTÉES EN QUINCONCE (X VOIR LISTE DE PLANTATION ET PLANS) / PERENNIALS ARE ALWAYS PLANTED IN STAGGERED ROWS (X SEE LISTS OF PLANTING AND PLANS)  
 - ARROSER ABONDAMMENT LE SOL AUSSITÔT APRÈS LA PLANTATION / SPRAY THE GROUND WITH WATER IMMEDIATELY AFTER PLANTING



**PLANTATION DE VIVACES OU GRAMINÉES / PERENNIAL PLANTING**  
 Echelle / Scale 1:20

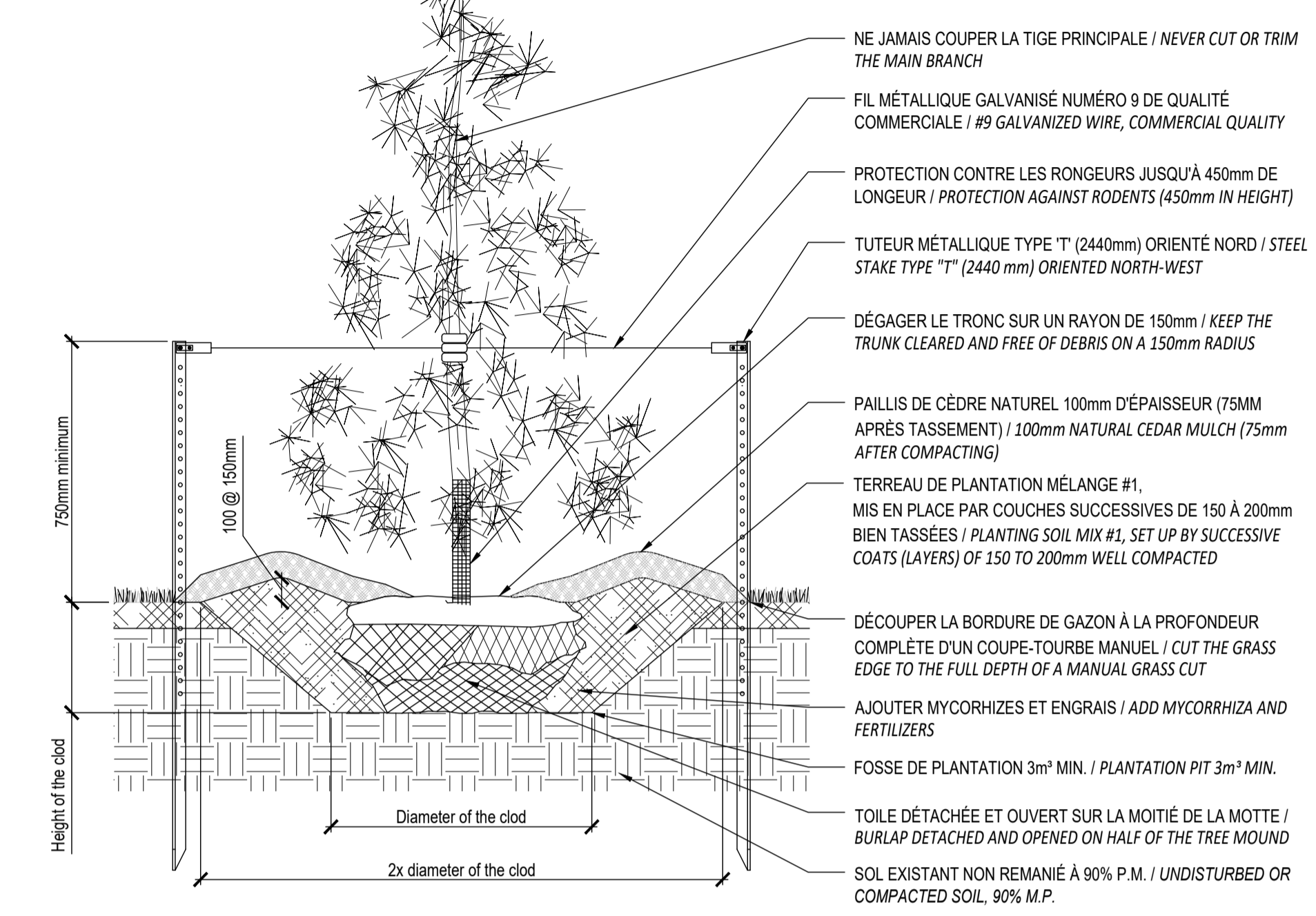
**NOTE:**  
 - LA FOSSE DE PLANTATION DOIT AVOIR UN DIAMÈTRE DE 500mm MINIMUM / THE PLANTING PIT MUST HAVE A DIAMETER OF 500mm MINIMUM.



**PLANTATION D'ARBUSTES / SHRUB PLANTING**  
 Echelle / Scale 1:20

**DISPOSITION DES TUTEURS / DISPOSITION OF TUTORS**

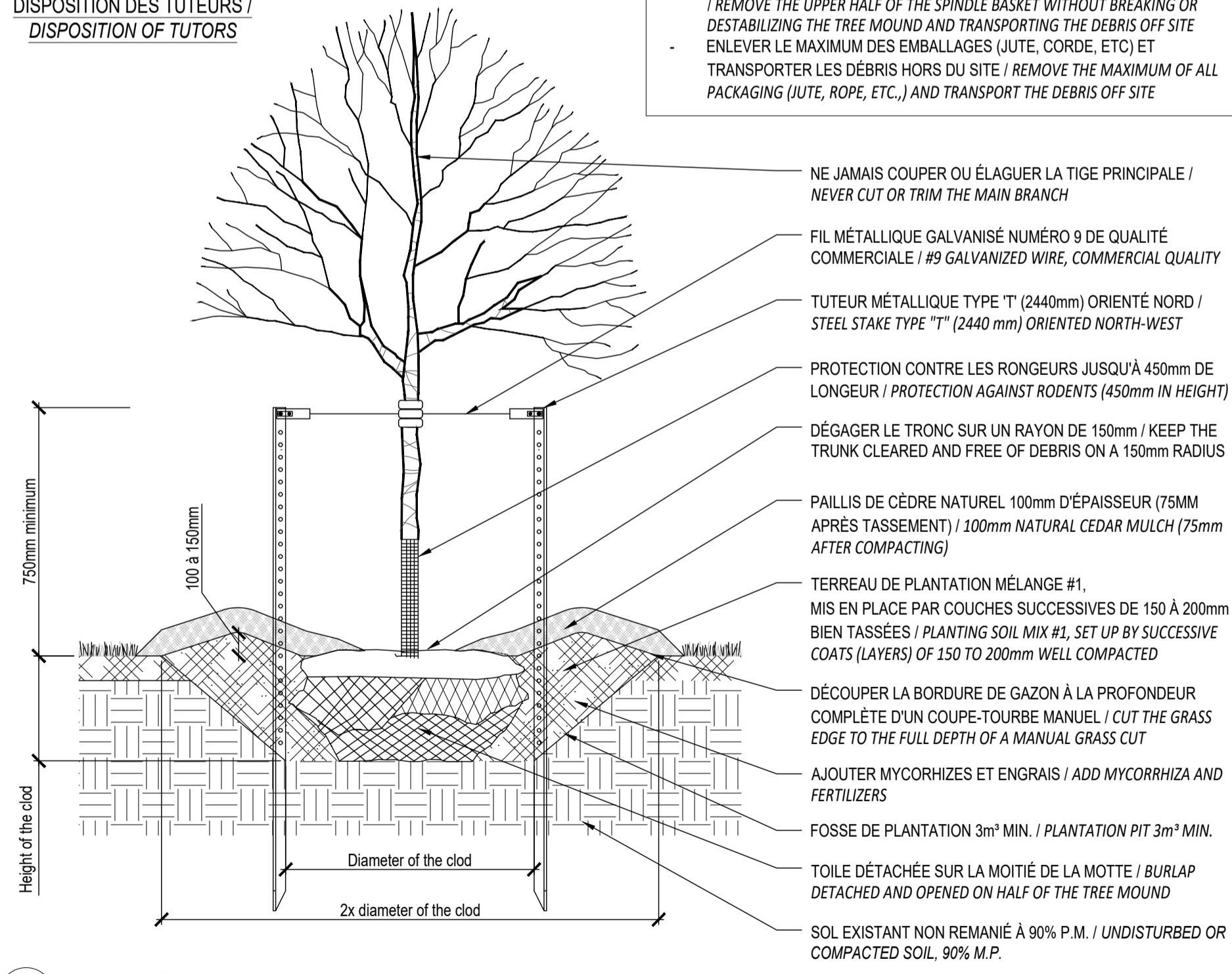
**NOTE:**  
 - LA FOSSE DE PLANTATION DOIT AVOIR UN DIAMÈTRE DE 500mm MINIMUM / THE PLANTING PIT MUST HAVE A DIAMETER OF MIN 500mm  
 - LES TUTEURS NE SONT REQUIS QUE LORSQU'UNE CONIFÈRE A UNE HAUTEUR DE PLUS DE 150cm / STAKES ARE REQUIRED ONLY WHEN THE EVERGREEN HAS A HEIGHT OF 150cm AND MORE



**PLANTATION D'ARBRES CONIFÈRE / CONIFEROUS TREE PLANTING**  
 Echelle / Scale 1:20

**DISPOSITION DES TUTEURS / DISPOSITION OF TUTORS**

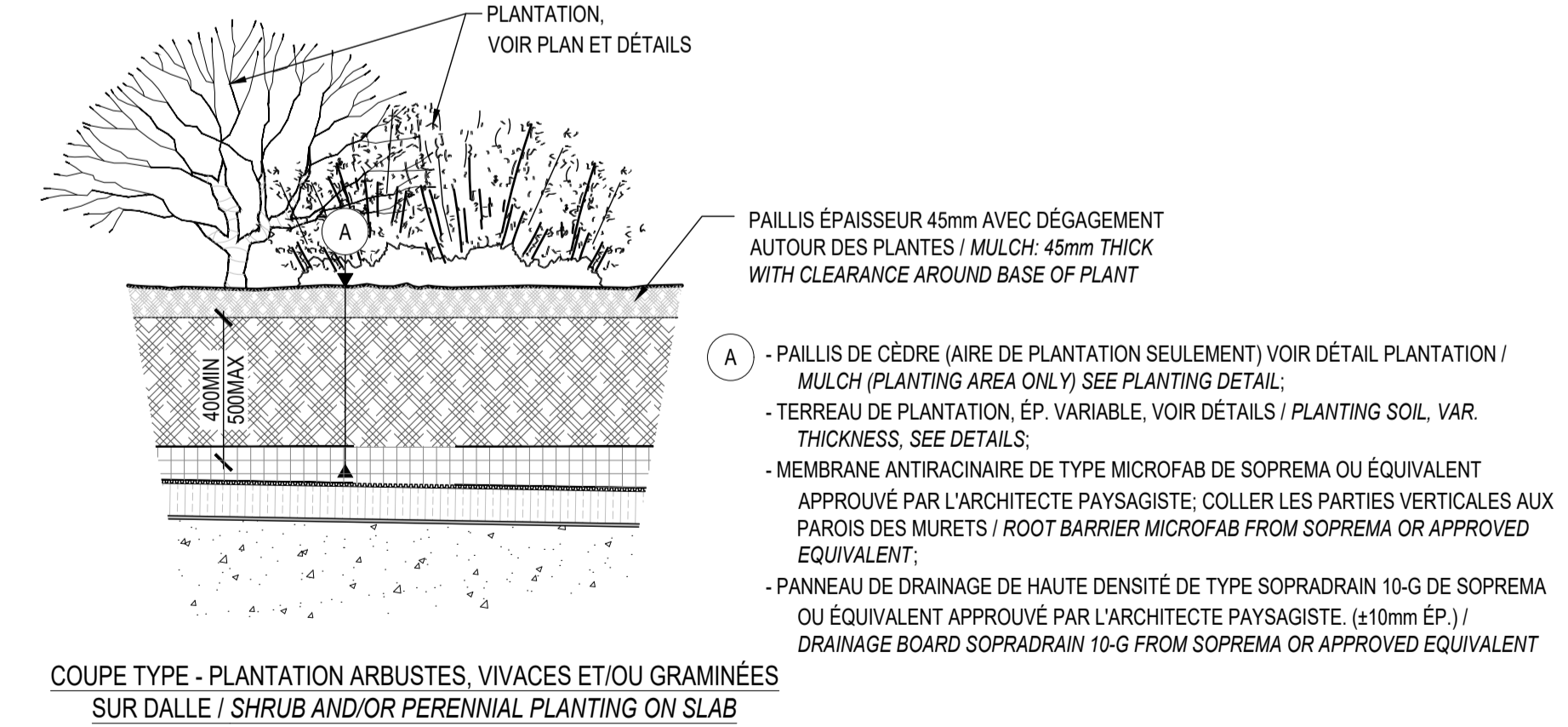
**NOTE:**  
 - ENLEVER LA MOITIÉ SUPÉRIEURE DU PANIER DE BROCHE SANS BRISER ET DÉSTABILISER LA MOTTE ET TRANSPORTER HORS DU SITE LES DÉBRIS / REMOVE THE UPPER HALF OF THE SPINDLE BASKET WITHOUT BREAKING OR DESTABILIZING THE TREE MOUND AND TRANSPORTING THE DEBRIS OFF SITE  
 - ENLEVER LE MAXIMUM DES EMBALLAGES (JUTE, CORDE, ETC) ET TRANSPORTER LES DÉBRIS HORS DU SITE / REMOVE THE MAXIMUM OF ALL PACKAGING (JUTE, ROPE, ETC.,) AND TRANSPORT THE DEBRIS OFF SITE



**PLANTATION D'ARBRE FEUILLU**  
 Scale 1:20

**NOTES:**

- IT IS THE RESPONSIBILITY OF THE CONTRACTOR TO VALIDATE THE THICKNESS OF THE SOIL WITH THE BUILDING STRUCTURE
- WITH THE EXCEPTION OF TREES, THERE MUST BE A MAXIMUM OF 500MM OF SOIL AND/OR GRANULAR FOUNDATION ON THE CONCRETE SLAB. FILL ALL SPACE ABOVE THE REQUIRED SOIL AND/OR GRANULAR FOUNDATION THICKNESS WITH RIGID INSULATION TO REACH THE FINISH GRADE INDICATED ON THE PLANS.
- MAKE SURE TO HAVE A MINIMUM AND MAXIMUM OF 1000MM OF SOIL. FILL ALL SPACE ADJACENT TREE WITH RIGID INSULATION, AS TO RESPECT THE MAXIMUM OF 500MM OF SOIL.
- WHEN PLANTING SHRUBS, MAKE SURE TO HAVE A MINIMUM OF 500MM OF SOIL.
- WHEN PLANTING PERENNIALS AND/OR ORNAMENTAL GRASSES, MAKE SURE TO HAVE A MINIMUM OF 500MM OF SOIL.
- FOR SOD, ENSURE YOU HAVE A MINIMUM OF 150MM OF SOIL.
- REGARDLESS OF THE TYPE OF SURFACE (PLANTING, PAVERS, EDGES OR WALLS), INSTALL ALL THE DRAINAGE PANEL ON THE ENTIRE SURFACE OF THE SLAB AND IN A CONTINUOUS MANNER.



**PLANTATION SUR DALLE / PLANTING ON CONCRETE SLAB**  
 Echelle / Scale 1:20

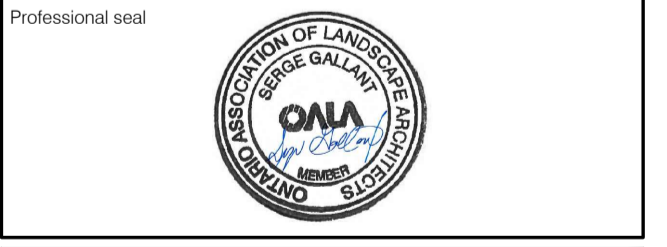
Revisions			
No	Description	Appr.	Date
1	Preliminary issue	S.G.	11/15/21
2	Site Plan Control	S.G.	12/10/21
3	Site Plan Control	S.G.	12/13/21
4	Site Plan Control	S.G.	12/15/21
5	Site Plan Control	S.G.	03/18/22
6	Site Plan Control	S.G.	06/23/22
7	Coordination plans - 99%	S.G.	08/26/22
8	Site Plan Control	S.G.	12/13/22
9	Site Plan Control	S.G.	02/24/23
10	Site Plan Control	S.G.	03/13/23

**DO NOT USE FOR CONSTRUCTION**

- Notes:**
- The Contractor must verify all site existing conditions before beginning the work and inform the Project Director of any errors, omissions or contradictions.
  - Existing grades indicated on the plan come from the survey provided by the owner.
  - The Contractor must not cut down any existing vegetation without the approval of the Project Director.
  - Implantation of the works on site must be approved by the Project Director.
  - The Contractor must use the CAD file for implantation of all work.
  - The contractor must verify the amounts specified in the schedule and notify the landscape architect of any errors, omissions or contradictions before the close of the bid.

**PROJET | PAYSAGE**

24 Mont-Royal O. Bureau 801 Montréal Québec H2T 2S2  
 T: 514.849.7700 F: 514.849.2027 info@projetpaysage.com



Project name  
**979, WELLINGTON**  
**D017-12-21-0228**

Drawing title  
**PLANTING DETAILS**

Indicated scales

Designed by:  
 S. Gallant

Drawn by:  
 X. Benjamin

Approved by:  
 S. Gallant

Date:  
 November 2020

Sheet No.:  
**AP-52**

Plan No: 18841