

- CONNECT TO EXISTING WATERMAIN (CITY FORCES)
- ROAD CUT TO BE REINSTATED AS PER DETAIL R-10
- REMOVE AND REPLACE EXISTING CONCRETE SIDEWALK AND CURB
- REMOVE AND REPLACE EXISTING CONCRETE ISLAND AND CURB
- ROAD CUT TO BE REINSTATED AS PER DETAIL R-10
- WM CROSSING (TYP) TO BE PER WS25.2 C/W 45° VERT. BENDS PROVIDE 75mm HI-40 INSULATION TOP OF STORM 61.35 TOP OF WATERMAIN 61.75
- CONNECT TO EXISTING WATERMAIN (CITY FORCES)
- REMOVE AND REPLACE EXISTING CONCRETE SIDEWALK AND CURB

JOB BENCHMARK No. 1
Fire Hydrant-Top of Sphere
Elevation=62.24

DEPRESSED CURB, SIDEWALK AS PER CITY OF OTTAWA STANDARD DETAIL SCT 1

REMOVE AND REPLACE EXISTING CONCRETE SIDEWALK AND CURB
FIRE DEPT. CONNECTION

CLIENT

MAGIL LAURENTIENNE
ML Wellington Realty Investments Inc.
C/O ML DEVCO INC
651, Church Avenue N
Ottawa (Ontario) K1Z 5G2
Tel: 613-686-6319

COPYRIGHT
This drawing has been prepared solely for the intended use, thus any reproduction or distribution for any purpose other than that authorized by IBI Group is forbidden. Written dimensions shall have precedence over scaled dimensions. Contractors shall verify and be responsible for all dimensions and conditions on the job, and IBI Group shall be relieved of any liability from the dimensions and conditions shown on the drawing. Shop drawings shall be submitted to IBI Group for general conference before proceeding with fabrication.

IBI Group Professional Services (Canada) Inc.
is a member of the IBI Group of companies

ISSUES

No.	DESCRIPTION	DATE
1	ISSUED FOR COORDINATION	2022-01-28
2	ISSUED FOR PERMITS	2022-09-16
3	REVISED AS PER CITY COMMENTS	2022-11-28
4		
5		

SEE 010, 011, 012 FOR NOTES, LEGEND, CB TABLE, STREET SECTIONS AND DETAILS

KEY PLAN
N.T.S.

CONSULTANTS

<p>Site Planner FOTENI CONSULTANTS INC. 396 Cooper Street, Suite 300 Ottawa, Ontario, K2P 2H7 T: 613 730 5709 F: 613 730 1195 E: nbsche@fotenim.com</p>	<p>Geotechnical Engineer PATERSON GROUP 154 Colborne Road South Ottawa, Ontario, K2E 7J5 T: 613 226 7381 E: info@patersongroup.ca</p>
<p>Structural Engineer CGH GROUP 333 Preston Street, Suite 400 Ottawa, Ontario, K1S 9N4 T: 613 225 1311 F: 613 225 9868 E: profstat@cgigroup.com</p>	<p>Transportation Engineer CGH TRANSPORTATION INC. 13 Marlborough Avenue Ottawa, Ontario, K2G 3Z1 T: 343 999 8177 E: cna@cgtransportation.com</p>
<p>Architect ANNE O'SULLIVAN VOLLEBECK LTD. Ontario Land Surveyors 14 Concourse Gate, Suite 500, Nepean, Ontario, K2E 7G0 T: 613 727 0850 F: 613 727 0779 E: edp@ovktd.com</p>	<p>Architect RODERICK LAHEY ARCHITECTS 58 Beech Street Ottawa, Ontario, K1S 3J6 T: 613 724 9932 E: edp@rlaheyarchitecture.ca</p>

SEAL

IBI GROUP
400 - 333 Preston Street
Ottawa ON K1S 9M4 Canada
tel 613 225 1311 fax 613 225 9868
ibigroup.com

PROJECT
979, WELLINGTON

PROJECT NO:
126031

DRAWN BY:
J.B./D.P.S.

CHECKED BY:
J.I.M.

PROJECT MGR:
J.I.M.

APPROVED BY:
J.B.

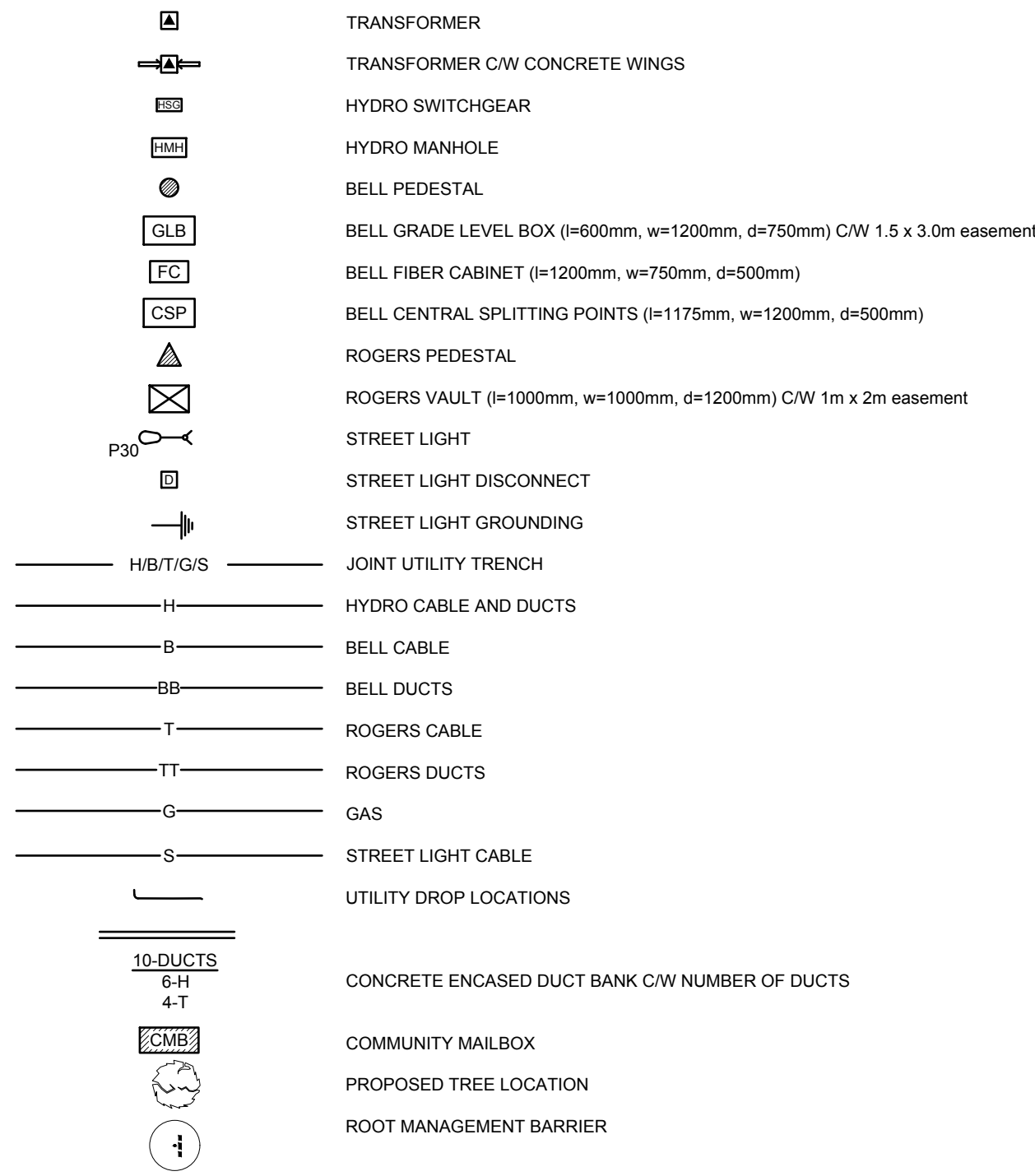
SHEET TITLE
SITE SERVICING PLAN

SHEET NUMBER
C-001

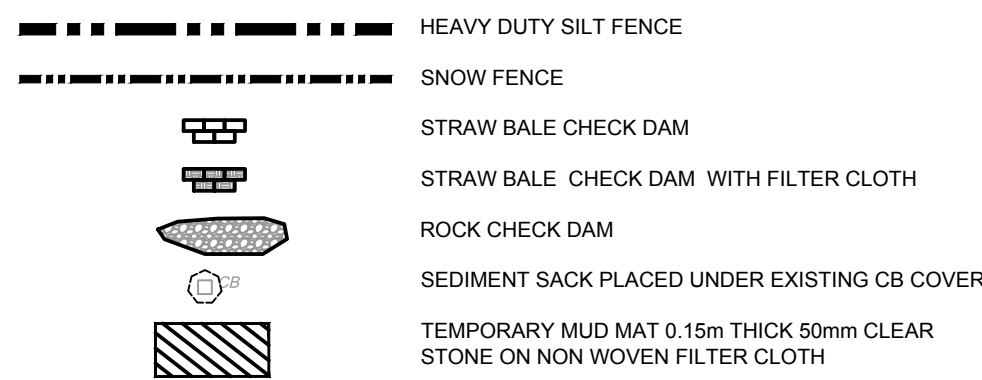
ISSUE
3

CITY FILE No. D07-12-21-0228
Scale Check
File Location: \\1128031_979Wellington7_0_Production\03_Design\04_Civil\Sheets\C-001-SITE PLAN.dwg Last Saved: November 28, 2022, by dsUma Printed: Monday, November 28, 2022 2:25:03 PM by Don Stuma

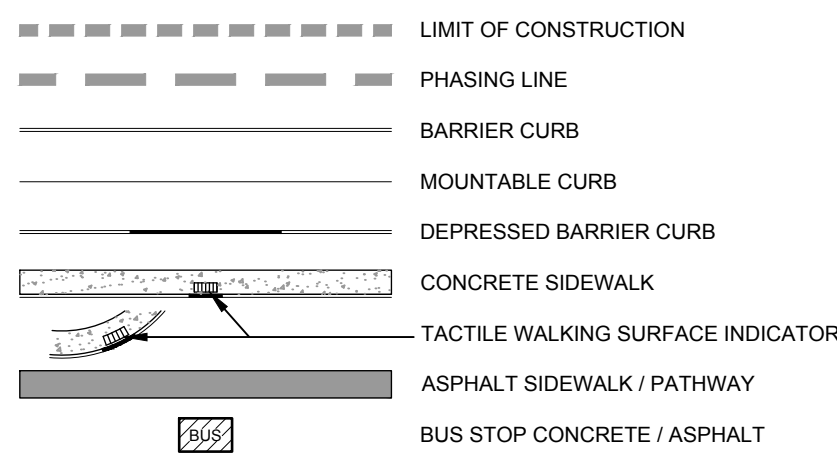
UTILITY LEGEND



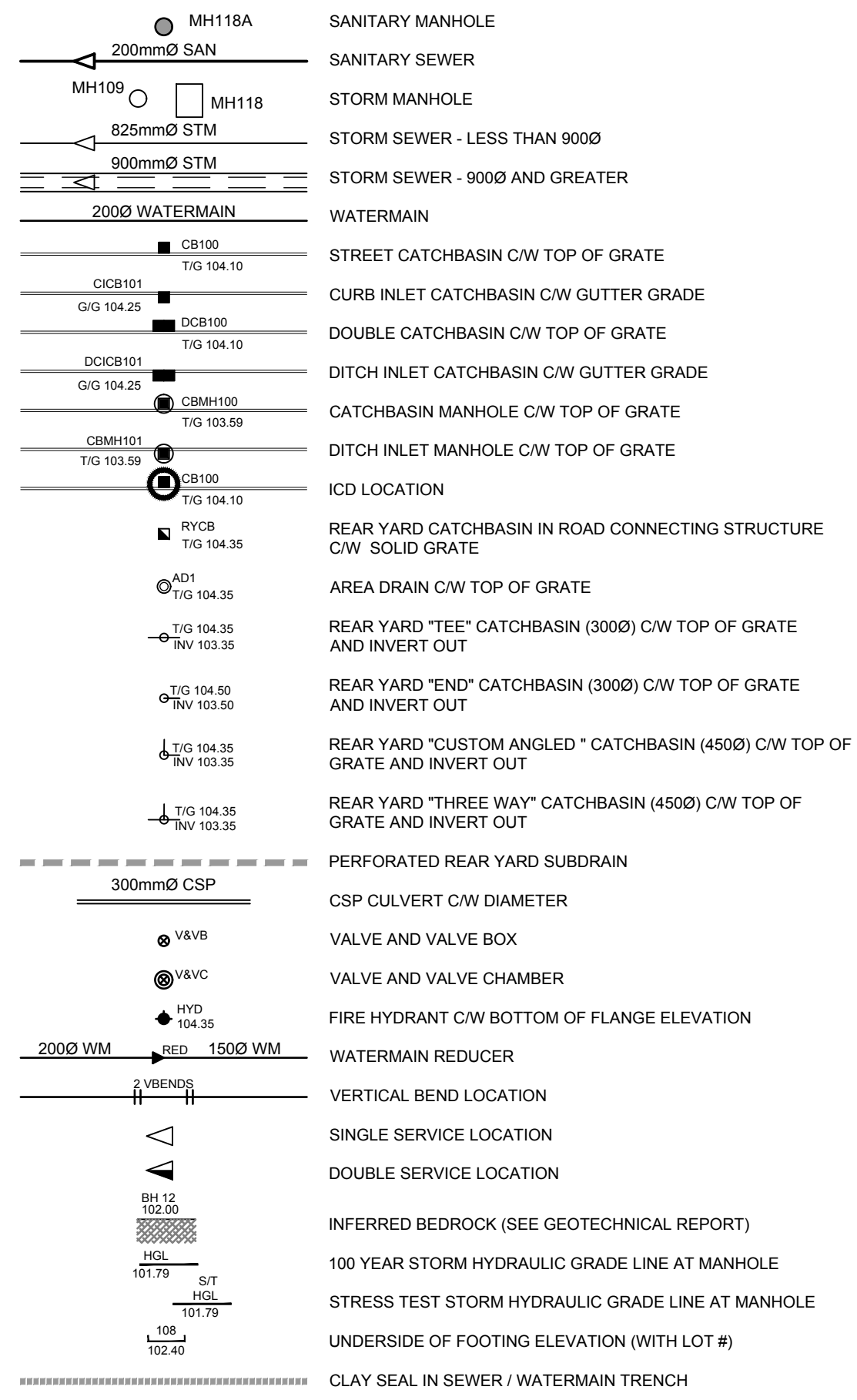
SEDIMENT EROSION LEGEND



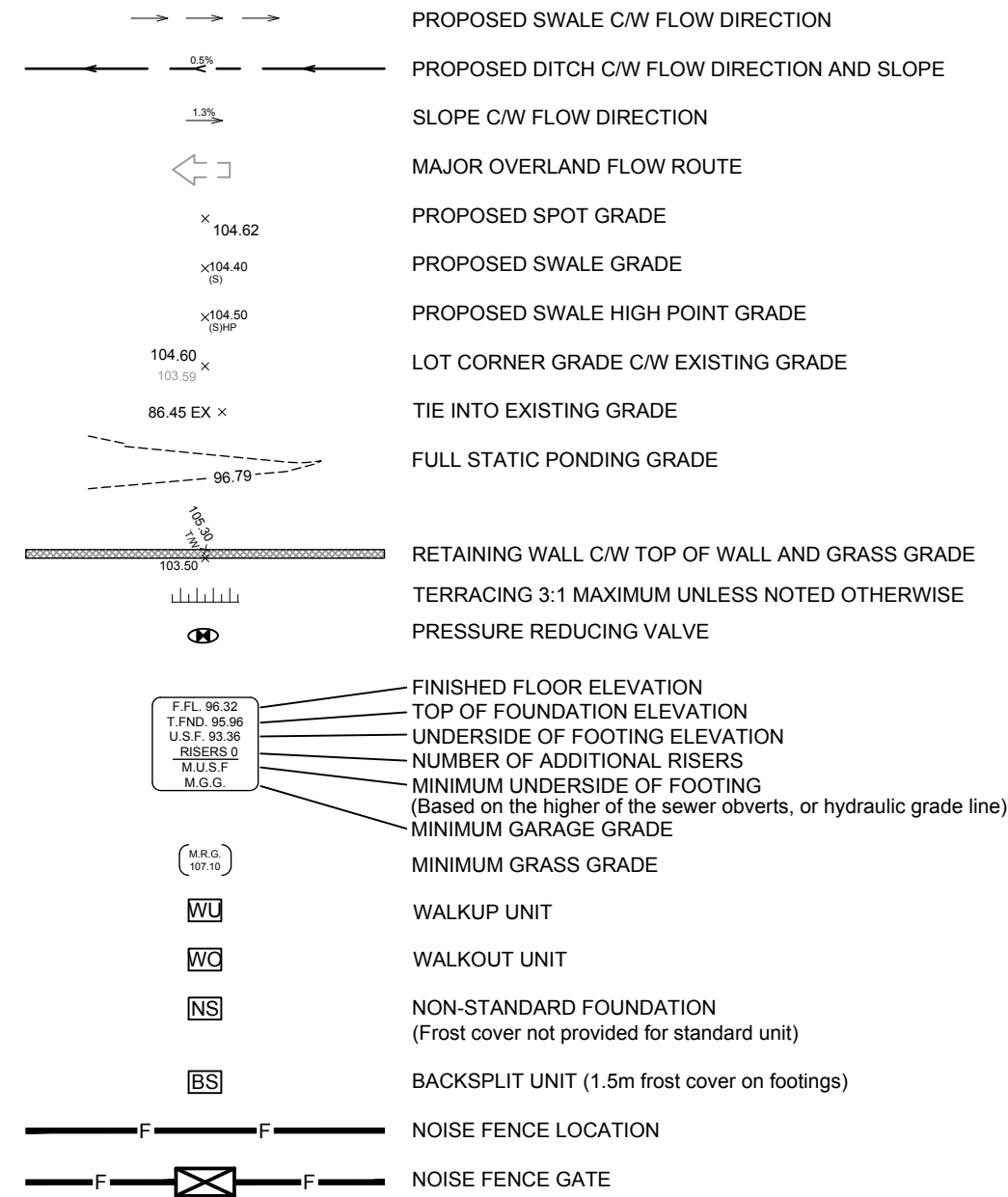
GENERAL LEGEND



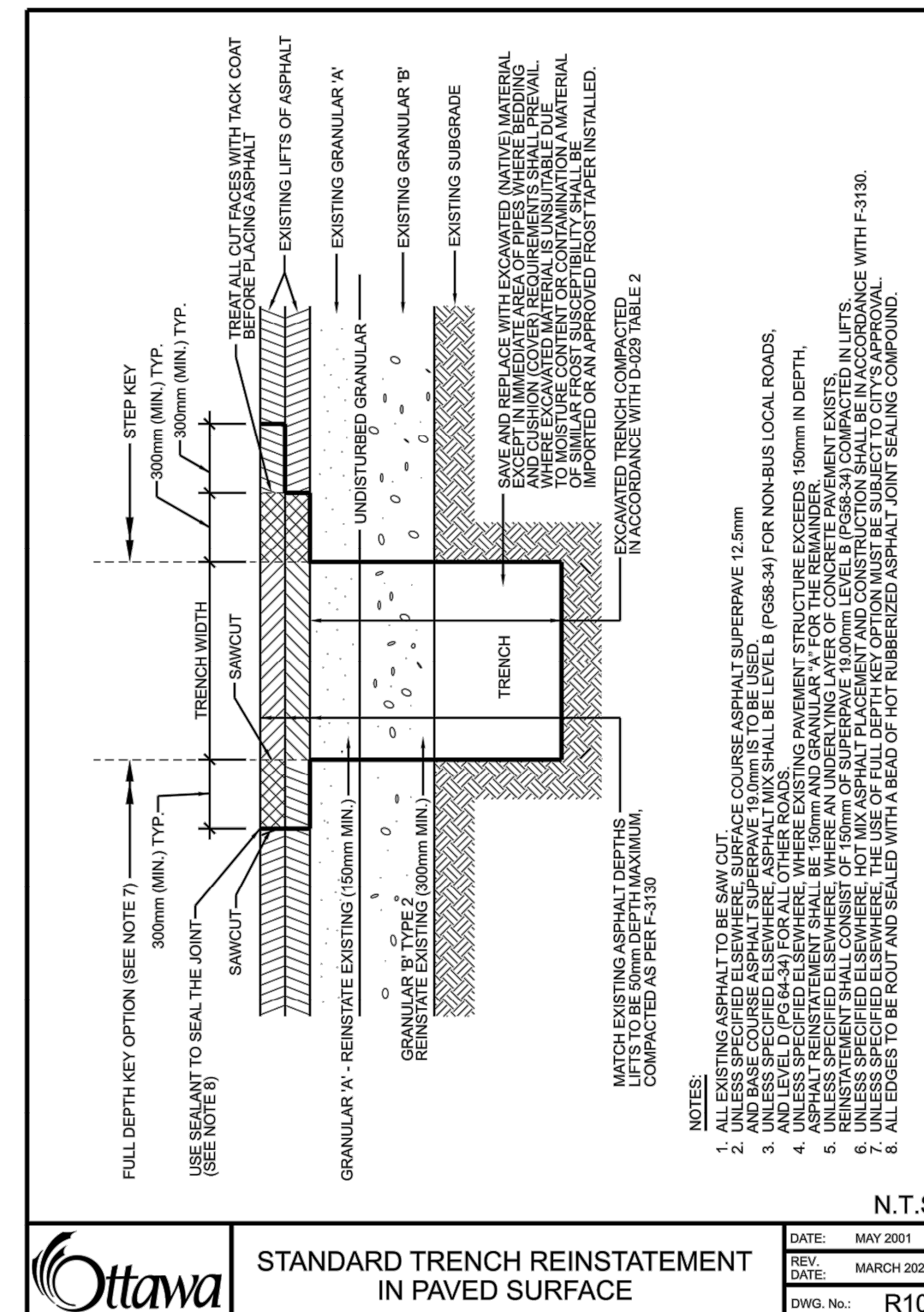
SERVICING LEGEND



GRADING LEGEND



CROSSING SCHEDULE	
1	200mmØ WATERMAIN OVER 1200mmØ SANITARY SEWER - CLEARANCE 0.25m (INSULATION REQUIRED)
2	200mmØ WATERMAIN OVER 675mmØ S/STORM SEWER - CLEARANCE 0.40m
3	200mmØ SANITARY SEWER UNDER 675mmØ STORM SEWER - CLEARANCE 0.25m
4	200mmØ SANITARY SEWER UNDER 300mmØ STORM SEWER - CLEARANCE 0.40m



NOTES:

- ALL MATERIALS AND CONSTRUCTION IS TO BE IN ACCORDANCE WITH THE CURRENT CITY OF OTTAWA STANDARD DRAWINGS & SPECIFICATIONS OR OPSD/OPSS IF CITY DRAWINGS AND SPECIFICATIONS DO NOT APPLY.
- THE CONTRACTOR IS RESPONSIBLE FOR DETERMINING THE EXACT LOCATION, SIZE, MATERIAL AND ELEVATION OF ALL EXISTING SERVICES AND UTILITIES PRIOR TO CONSTRUCTION AND SHALL PROTECT AND ASSUME RESPONSIBILITY FOR ALL UTILITIES WHETHER OR NOT SHOWN ON THESE DRAWINGS.
- ROADWAY SECTIONS REQUIRING GRADE RAISE TO PROPOSED SUB GRADE LEVEL TO BE FILLED WITH ACCEPTABLE NATIVE EARTH BORROW OR IMPORTED OPSS SELECTED SUBGRADE MATERIAL IF NATIVE MATERIAL IS DEFICIENT AS PER RECOMMENDATION OF GEOTECHNICAL ENGINEER.
- IN AREAS WHERE EXISTING GROUND IS BELOW THE PROPOSED ELEVATION OF SEWER AND WATERMANS, GRADE RAISING AND FILLING IS TO BE IN ACCORDANCE WITH THE RECOMMENDATIONS OF THE GEOTECHNICAL REPORT. AS PER CITY GUIDELINES ALL WATERMANS IN FILL AREAS ARE TO BE TIED WITH RESTRAINING JOINTS AND THRUST BLOCKS.
- CONTRACTORS SHALL BE RESPONSIBLE FOR KEEPING CLEAN ALL ROADS WHICH BECOME COVERED IN DUST, DEBRIS AND/OR MUD AS A RESULT OF ITS CONSTRUCTION OPERATIONS.
- SILT FENCE TO BE ERRECTED PRIOR TO EARTH WORKS BEING COMMENCED. SILT FENCE TO BE MAINTAINED UNTIL VEGETATION IS ESTABLISHED OR UNTIL START OF SUBSEQUENT PHASE.
- STRAW BALE SEDIMENT TRAPS TO BE PLACED AND MAINTAINED IN EXISTING AND CONSTRUCTED ROADSIDE DITCHES, TRAPS TO REMAIN AND BE MAINTAINED UNTIL VEGETATION IS ESTABLISHED (IF APPLICABLE).
- SILT SACK TO BE PLACED AND MAINTAINED UNDER COVER OF ALL CATCHBASINS. GEOTEXTILE FABRIC IN RY/CBs TO REMAIN UNTIL ALL CURBS ARE CONSTRUCTED. ALL CATCHBASINS TO BE REGULARLY INSPECTED AND CLEANED, AS NECESSARY, UNTIL SOD AND CURBS ARE CONSTRUCTED.
- ALL CONNECTIONS TO EXISTING WATERMANS ARE TO BE COMPLETED BY CITY FORCES. CONTRACTOR IS TO EXCAVATE, BACKFILL, COMPACT AND REINSTATE.
- ANY WATERMAIN WITH LESS THAN 2.4M DEPTH OF COVER REQUIRES THERMAL INSULATION AS PER CITY OF OTTAWA STANDARD W22, OR AS APPROVED BY THE ENGINEER.
- ALL LEADS FOR STREET CB'S TO AND IC/B'S CONNECTED TO MAIN SHALL BE 200mmØ PVC DR35 @ MIN 2% SLOPE UNLESS NOTED OTHERWISE. ALL LEADS FOR RY/CBs CONNECTED TO MAIN SHALL BE 200mmØ PVC DR35 @ MIN 1% SLOPE UNLESS NOTED OTHERWISE.
- EACH BUILDING SHALL BE EQUIPPED WITH A SANITARY AND STORM SEWER BACKWATER VALVE AS PER CITY STDS S14, S14.1 OR S14.2.
- THESE DRAWINGS ARE NOT TO BE SCALED OR USED FOR LAYOUT PURPOSES.
- THE COMPOSITE UTILITY PLAN HAS BEEN REVIEWED BY IBI GROUP FOR CONFORMITY TO THE DESIGN CONCEPT FOR THE DEVELOPMENT AND FOR GENERAL ARRANGEMENT ONLY AND AS SUCH SHALL NOT RELIEVE THE CONTRACTOR OF RESPONSIBILITY FOR ERRORS OR OMISSIONS IN EITHER LAYOUT OR WORKMANSHIP.
- ALL UTILITY BOXES (I.E. PEDESTALS, TRANSFORMERS, ETC) ARE TO BE INSTALLED IN ACCORDANCE WITH THE LATEST EDITION OF THE CITY OF OTTAWA'S "GUIDELINES FOR UTILITY PEDESTALS WITHIN THE ROAD RIGHT OF WAY".
- THIS DRAWING IS A COMPILED OF OTHER UTILITY DESIGNS AND DOES NOT INDICATE IN ANY WAY THAT THE PARTY SIGNING THIS DRAWING HAS DESIGNED OR APPROVED THE RESPECTIVE UTILITY PLANTS INDICATED ON THIS DRAWING. THE DRAWING WAS PREPARED TO BE USED AS REFERENCE ONLY AS PER REQUIREMENTS OF THE CITY OF OTTAWA. IT IS THE CONTRACTORS RESPONSIBILITY TO ENSURE IT HAS REVIEWED THE CURRENT AND EXISTING DESIGNS BY HYDRO, STREET LIGHTING, BELL, CANADA POST, O.C. TRANSP. CABLE TV AND ANY OTHER PARTIES INCLUDED BUT NOT MENTIONED AND COMPLETE THE INSTALLATION IN ACCORDANCE WITH THE REQUIREMENTS OF THE STAKEHOLDER UTILITY DESIGNS.
- CONTRACTOR TO REVIEW AND FOLLOW ALL RELEVANT CITY STANDARD DRAWINGS DURING CONSTRUCTION.
- OBTAIN ALL NECESSARY PERMITS AND APPROVAL FROM CITY OF OTTAWA BEFORE COMMENCING WORK.
- THERMAL INSULATION TO BE PROVIDED FOR WATER SERVICES LESS THAN 2.4m FROM OPEN STRUCTURES PER CITY OF OTTAWA STD W23.
- WATER SERVICE TO HAVE MORE THAN 2.4M OF COVER OR BE INSULATED PER CITY OF OTTAWA STD W22.
- ALL SANITARY SEWER MAINS TO BE CSA CERTIFIED, BELL AND SPIGOT TYPE. ONLY FACTORY FITTINGS TO BE USED. SEWER TO BE INSTALLED AS PER OPSD 1005.01. SANITARY SEWER MATERIALS TO BE: 200mmØ - PVC DR 35.
- ALL STORM SEWER MAINS TO BE CSA CERTIFIED, BELL AND SPIGOT TYPE. ONLY FACTORY FITTINGS TO BE USED. SEWER TO BE INSTALLED AS PER OPSD 1005.01. STORM SEWER MATERIALS TO BE: 450mmØ AND SMALLER - PVC DR 35.
- ALL WATERMANS TO BE PVC DR 18, WITH MINIMUM COVER OF 2.4m AND INSTALLED PER CITY OF OTTAWA STANDARDS. ALL DOMESTIC WATER SERVICES ARE TO BE 200mmØ.

CLIENT

MAGIL LAURENTIENNE
ML Wellington Realty Investments Inc.
C/O ML DEVCO INC.
651, Churchill Avenue N.
Ottawa (Ontario) K1Z 5G2
Tel: 613-686-6319

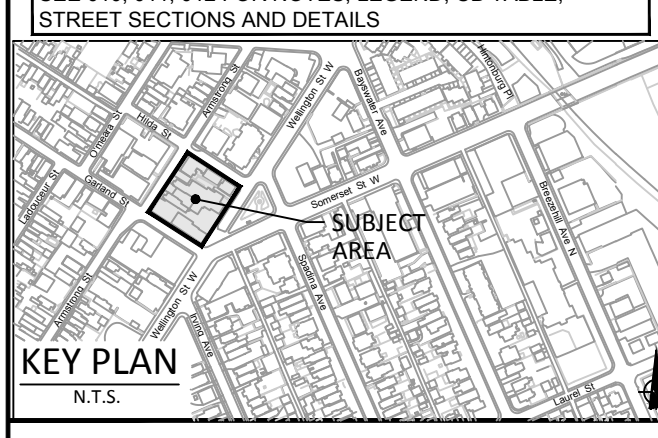
COPYRIGHT

This drawing has been prepared solely for the intended use. Any reproduction or distribution for any purpose other than that authorized by IBI Group is forbidden. Written dimensions shall have precedence over scaled dimensions. Contractors shall verify and be responsible for all dimensions and conditions on the job, and IBI Group shall be informed of any variations from the dimensions and conditions shown on the drawing. Shop drawings shall be submitted to IBI Group for general confirmation before proceeding with fabrication.

IBI Group Professional Services (Canada) Inc.
is a member of the IBI Group of companies.

ISSUES

No.	DESCRIPTION	DATE
1	ISSUED FOR COORDINATION	2022-01-28
2	ISSUED FOR PERMITS	2022-09-16
3	REVISED AS PER CITY COMMENTS	2022-11-28
4		
5		



CONSULTANTS

FORTEEN CONSULTANTS INC.
286 Cooper Street, Suite 300
Ottawa, Ontario, K2P 0V7
T: 613 730 5709
F: 613 730 1136
E: info@forteen.com

Geotechnical Engineer
PATERSON GROUP
154 Colbourne Road South
Ottawa, Ontario, K2E 7J5
T: 613 226 7281
E: info@patersongroup.com

Transportation Engineer
CGH TRANSPORTATION INC.
13 Marlborough Avenue
Ottawa, Ontario, K2G 3Z1
T: 343 999 6177
E: chris@cgtransportation.com

Structural
ARCHITECTS
RODERICK LAHEY ARCHITECTS
56 Beech Street
Ottawa, Ontario, K1S 3J6
T: 613 724 9932
E: aaron@rodericklahey.com

Structural
ANNE'S O'SULLIVAN VOLLEBEK LTD.
Ontario Land Surveyors
14 Concourse Gate, Suite 500,
Nepean, Ontario, K2E 7S6
T: 613 727 0850
F: 613 727 0779
E: edh@avk.com

SEAL

IBI GROUP
400 - 333 Preston Street
Ottawa ON K1S 5M4 Canada
tel 613 225 1311 fax 613 225 9368
ibigroup.com

PROJECT
979, WELLINGTON

PROJECT NO:
126031

DRAWN BY:
D.P.S.

CHECKED BY:
S.E.L.

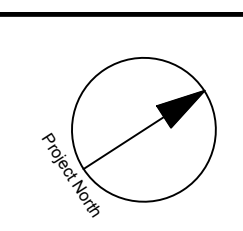
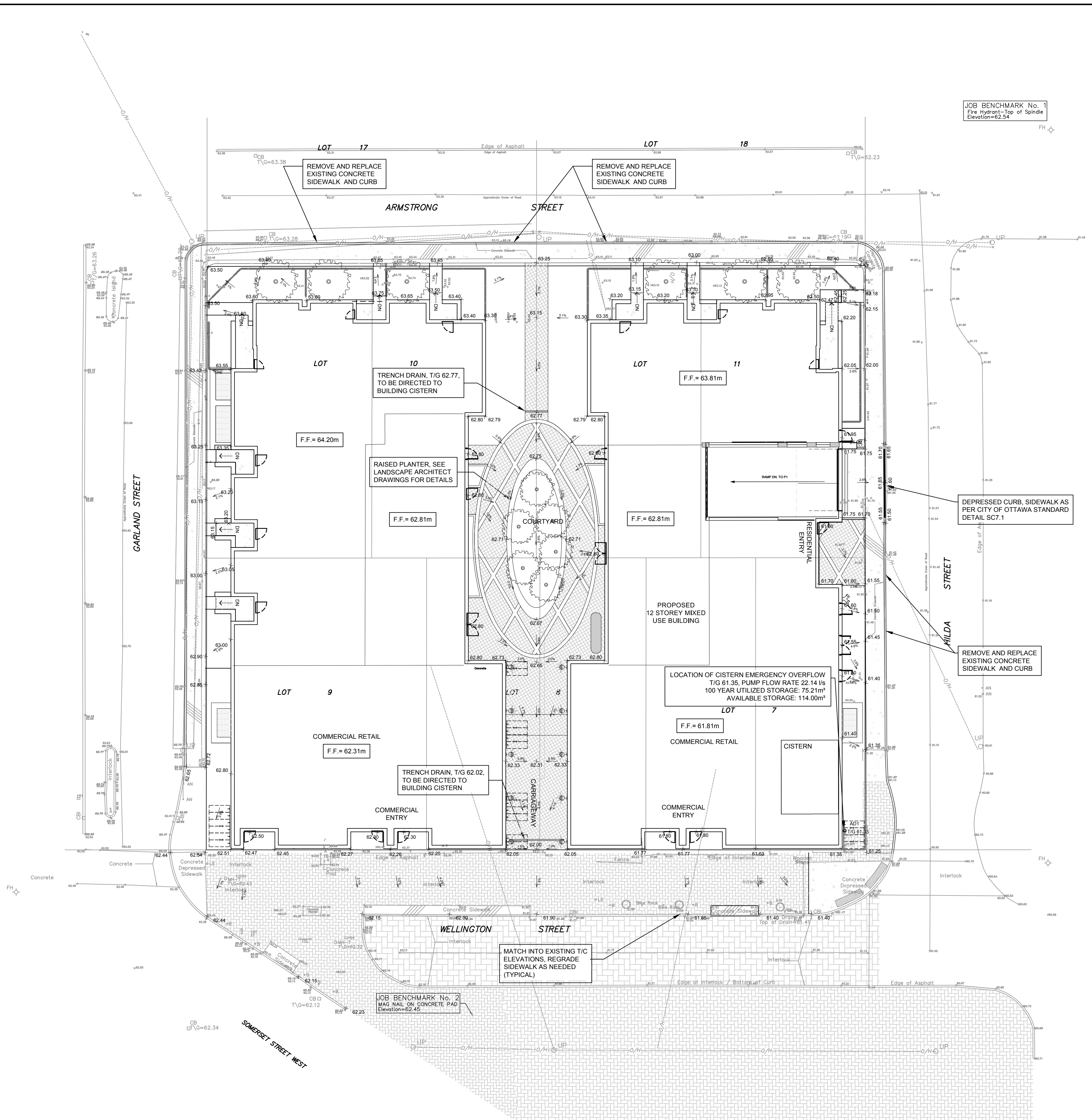
PROJECT MGR:
J.I.M.

APPROVED BY:
J.I.M.

SHEET TITLE
GENERAL NOTES, AND LEGEND

SHEET NUMBER
C-010

ISSUE
3



JOB BENCHMARK No. 1
 Face Hydrant - Top of Spindle
 Elevation=62.54

JOB BENCHMARK No. 2
 MAG NAIL ON CONCRETE PAD
 Elevation=62.45

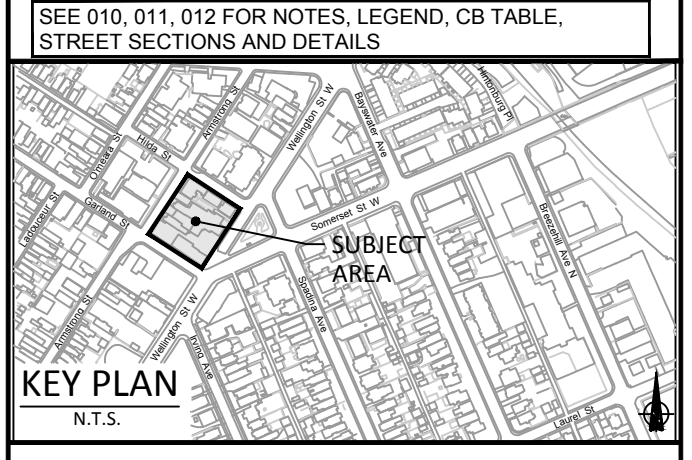
CLIENT

MAGIL LAURENTIENNE
 M.L. Wellington Realty Investments Inc.
 C/O ML DEVCO INC.
 651, Churchill Avenue N
 Ottawa (Ontario) K1Z 5G2
 Tel: 613-686-6319

COPYRIGHT
 This drawing has been prepared solely for the intended use. Any reproduction or distribution for any purpose other than authorized by IBI Group is forbidden. Written dimensions shall have precedence over scaled dimensions. Contractors shall verify and be responsible for all dimensions and conditions on the job, and IBI Group shall be informed of any variations from the dimensions and conditions shown on the drawing. Shop drawings shall be submitted to IBI Group for general conformance before proceeding with fabrication.
IBI Group Professional Services (Canada) Inc.
 is a member of the IBI Group of companies

ISSUES

No.	DESCRIPTION	DATE
1	ISSUED FOR COORDINATION	2022-01-28
2	ISSUED FOR PERMITS	2022-09-16
3	REVISED AS PER CITY COMMENTS	2022-11-28
4		
5		



CONSULTANTS

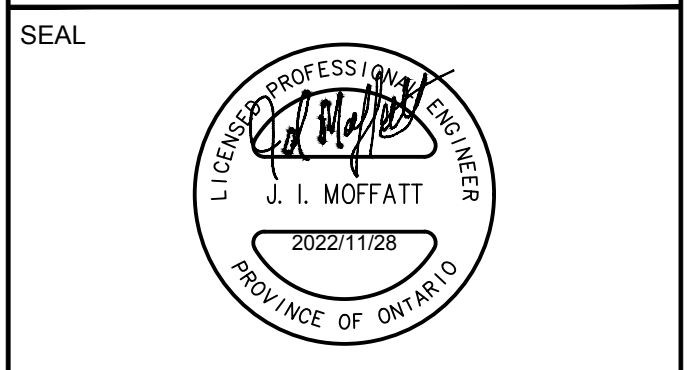
Geotechnical Engineer
FOTENY CONSULTANTS INC.
 286 Cooper Street, Suite 300
 Ottawa, Ontario, K2P 2V7
 T: 613 730 5709
 F: 613 730 1136
 E: nbsche@foteny.com

Geotechnical Engineer
PATERSON GROUP
 154 Colborne Road South
 Ottawa, Ontario, K2E 7J5
 T: 613 226 7281
 E: mrcro@patersongroup.ca

Transportation Engineer
CGH TRANSPORTATION INC.
 13 Marlborough Avenue
 Ottawa, Ontario, K2G 3Z1
 T: 343 999 6117
 E: chris@cgtransportation.com

Architecture
RODERICK LAHEY ARCHITECTS
 56 Beech Street
 Ottawa, Ontario, K1S 3J6
 T: 613 724 9932
 E: adam@rodericklahey.com

Structural
ANNE'S COLLAMANN VOLLEBEK LTD.
 Ontario Land Surveyors
 14 Concourse Gate, Suite 500
 Nepean, Ontario, K2E 7S6
 T: 613 727 0850
 F: 613 727 0719
 E: edh@avkl.com



SEAL

IBI GROUP
 400 - 333 Preston Street
 Ottawa ON K1S 5M4 Canada
 tel 613 225 1311 fax 613 225 5866
 ibigroup.com

PROJECT
979, WELLINGTON

PROJECT NO:
 126031

DRAWN BY:
 J.B./D.P.S.

CHECKED BY:
 J.B.

PROJECT MGR:
 J.I.M.

APPROVED BY:
 J.I.M.

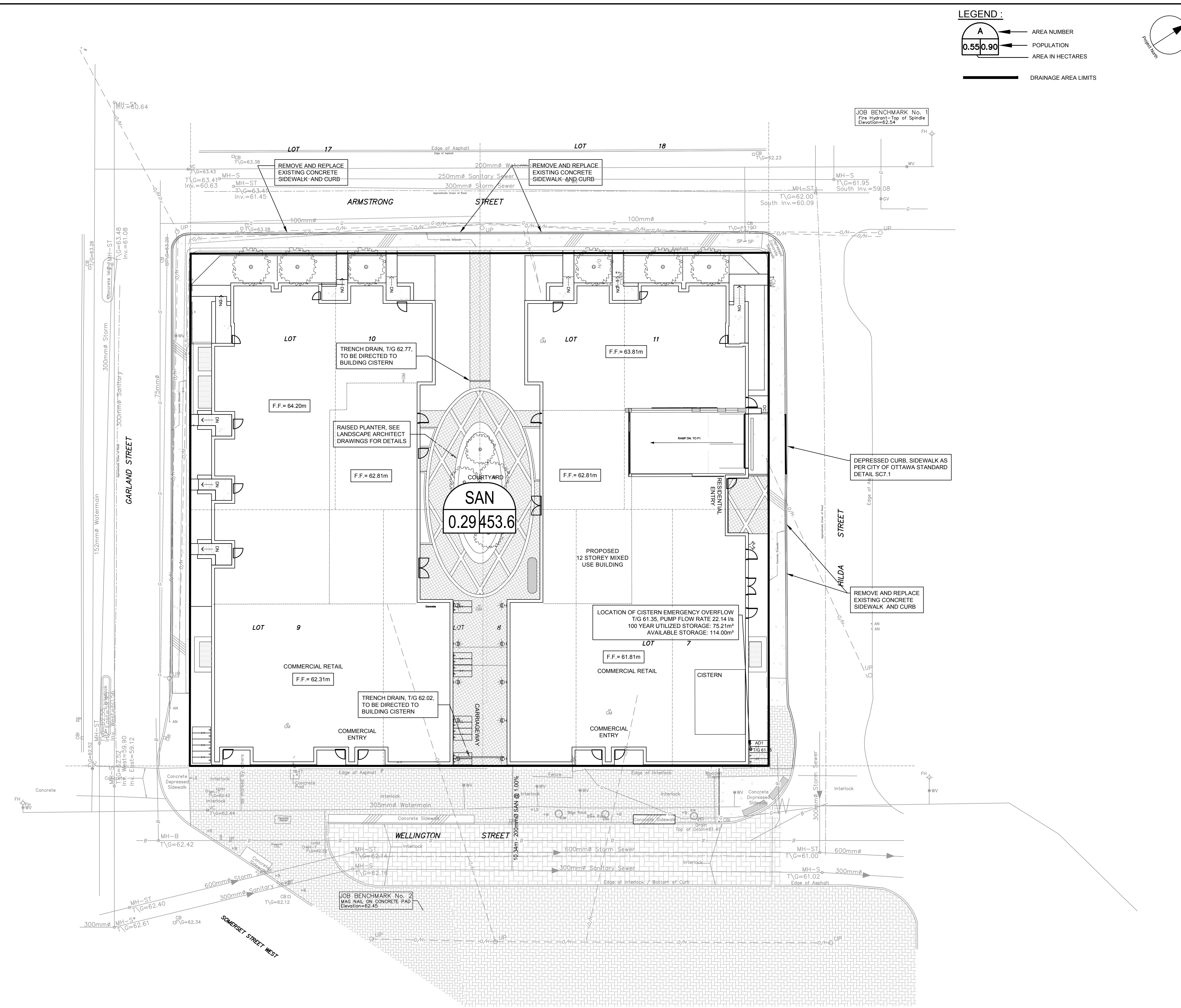
SHEET TITLE
SITE GRADING PLAN

SHEET NUMBER
C-200

ISSUE
3

CITY PLAN No. xxxxx

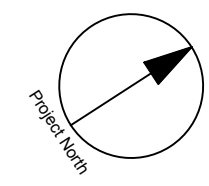
File Location: \\128031_979Wellington7_0_Production\7_03_Design\04_Civil\Sheets\C-200_Site Grading Plan.dwg Last Saved: September 16, 2022, by dsuama
 Printed: Monday, November 28, 2022 2:12:08 PM by Don Shuma
 CITY FILE No. D07-12-21-0228



LEGEND :

A AREA NUMBER
0.55 0.90 POPULATION
 AREA IN HECTARES

— DRAINAGE AREA LIMITS



JOB BENCHMARK No. 1
 Fire Hydrant - Top of Spindle
 Elevation = 62.54

JOB BENCHMARK No. 2
 MAG NAIL ON CONCRETE PAD
 Elevation = 62.45

CLIENT

MAGIL LAURENTIENNE
 ML Wellington Realty Investments Inc.
 C/O ML DEVCO INC
 651, Churchill Avenue N
 Ottawa (Ontario) K1Z 5G2
 Tel: 613-686-6319

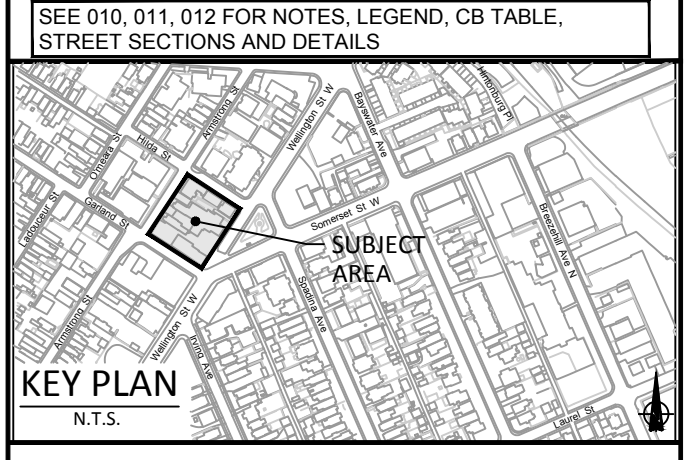
COPYRIGHT

This drawing has been prepared solely for the intended use, thus any reproduction or distribution for any purpose other than that authorized by IBI Group is forbidden. Written dimensions shall have precedence over scaled dimensions. Contractors shall verify and be responsible for all dimensions and conditions on the job, and IBI Group shall be informed of any variations from the dimensions and conditions shown on the drawing. Shop drawings shall be submitted to IBI Group for general conformance before proceeding with fabrication.

IBI Group Professional Services (Canada) Inc.
 is a member of the IBI Group of companies

ISSUES

No.	DESCRIPTION	DATE
1	ISSUED FOR COORDINATION	2022-01-28
2	ISSUED FOR PERMITS	2022-09-16
3	REVISED AS PER CITY COMMENTS	2022-11-28
4		
5		



CONSULTANTS

FORTECN CONSULTANTS INC.
 286 Cooper Street, Suite 300
 Ottawa, Ontario, K2P 2V7
 T: 613 730 5709
 F: 613 730 1136
 E: info@fortecn.com

Geotechnical Engineer
PATERSON GROUP
 154 Colborne Road South
 Ottawa, Ontario, K2E 7J5
 T: 613 226 7281
 E: info@patersongroup.ca

Transportation Engineer
COH TRANSPORTATION INC.
 113 Marlborough Avenue
 Ottawa, Ontario, K2G 3Z1
 T: 343 999 9117
 E: chris@cohinc.com

Structural Engineer
AMNS CONSULTING ENGINEERS LTD.
 146 Concourse Gate, Suite 500
 Nepean, Ontario, K2E 7S6
 T: 613 727 0850
 F: 613 727 0719
 E: edh@amns.com

Architecture
RODERICK LAHEY ARCHITECTS
 56 Beech Street
 Ottawa, Ontario, K1S 3J6
 T: 613 724 9932
 E: adam@rodericklahey.com

Scale: 1:200

SEAL

IBI GROUP
 400 - 333 Preston Street
 Ottawa ON K1S 5M4 Canada
 tel 613 225 1311 fax 613 225 5866
 ibigroup.com

PROJECT
 979, WELLINGTON

PROJECT NO:
 126031

DRAWN BY:
 J.B./D.P.S.

CHECKED BY:
 J.B.

PROJECT MGR:
 J.I.M.

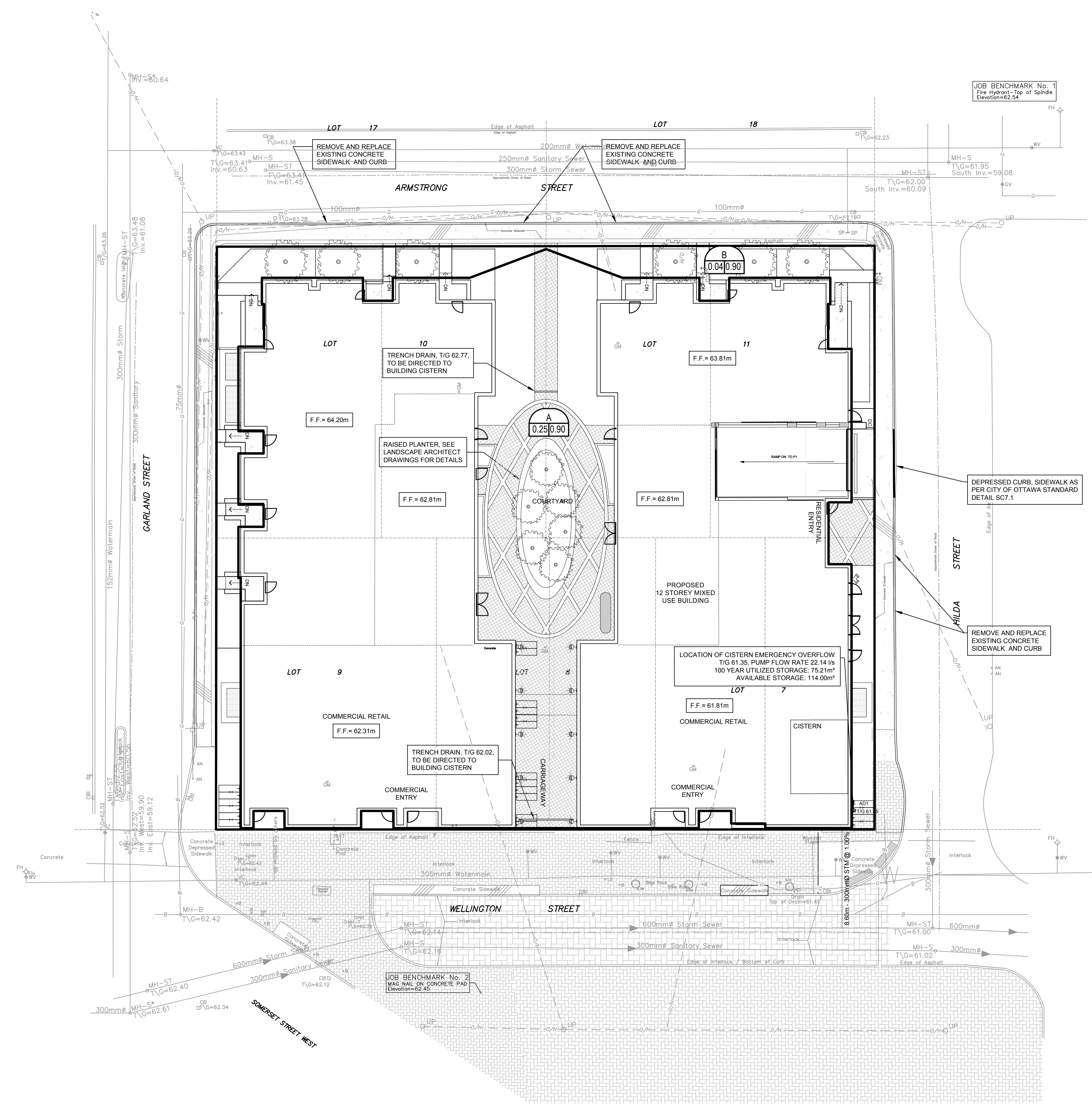
APPROVED BY:
 J.I.M.

SHEET TITLE
 SANITARY DRAINAGE AREA PLAN

SHEET NUMBER
 C-400

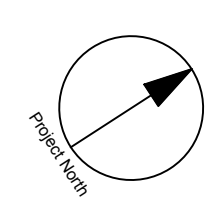
ISSUE
 3

File Location: J:\126031_979Wellington\A_Production\03_Design\04_Civil\Sheet\C-400 SANITARY DRAINAGE AREA PLAN.dwg Last Saved: November 28, 2022, by dsiuma Plotted: Monday, November 28, 2022, 2:28:17 PM by Don Stuma
 CITY FILE No. D07-12-21-0228



LEGEND :

- AREA NUMBER
- RUNOFF COEFFICIENT
- AREA IN HECTARES
- DRAINAGE AREA LIMITS



CLIENT

MAGIL LAURENTIENNE
 ML Wellington Realty Investments Inc.
 C/O ML DEVCO INC
 651, Churchill Avenue N
 Ottawa (Ontario) K1Z 5G2
 Tel: 613-686-6319

COPYRIGHT

This drawing has been prepared solely for the intended use, thus any reproduction or distribution for any purpose other than authorized by IBI Group is forbidden. Written dimensions shall have precedence over scaled dimensions. Contractors shall verify and be responsible for all dimensions and conditions on the job, and IBI Group shall be informed of any variations from the dimensions and conditions shown on the drawing. Shop drawings shall be submitted to IBI Group for general conformance before proceeding with fabrication.

IBI Group Professional Services (Canada) Inc.
 is a member of the IBI Group of companies

ISSUES

No.	DESCRIPTION	DATE
1	ISSUED FOR COORDINATION	2022-01-28
2	ISSUED FOR PERMITS	2022-09-16
3	REVISED AS PER CITY COMMENTS	2022-11-28
4		
5		

SEE 010, 011, 012 FOR NOTES, LEGEND, CB TABLE, STREET SECTIONS AND DETAILS

KEY PLAN
 N.T.S.

CONSULTANTS

FOITEN CONSULTANTS INC.
 286 Cooper Street, Suite 300
 Ottawa, Ontario, K2P 2V7
 T: 613 730 5709
 F: 613 730 1136
 E: info@foiten.com

Geotechnical Engineer
PATERSON GROUP
 154 Colborne Road South
 Ottawa, Ontario, K2E 7J5
 T: 613 226 7281
 E: info@patersongroup.ca

Transportation Engineer
COH TRANSPORTATION INC.
 113 Marlborough Avenue
 Ottawa, Ontario, K2G 3Z1
 T: 343 999 9117
 E: chris@cohinc.com

Architecture
RODERICK LAHEY ARCHITECTS
 56 Beech Street
 Ottawa, Ontario, K1S 3J6
 T: 613 724 9932
 E: adam@rodericklahey.ca

Structural
ANNE'S O'SULLIVAN VOLLEBEK LTD.
 Ontario Land Surveyors
 14 Concourse Gate, Suite 500
 Nepean, Ontario, K2E 7S6
 T: 613 727 0850
 F: 613 727 0719
 E: edh@sovll.com

SEAL

SCALE

PROJECT

979, WELLINGTON

PROJECT NO:
126031

DRAWN BY:
J.B./D.P.S.

CHECKED BY:
J.B.

PROJECT MGR:
J.I.M.

APPROVED BY:
J.I.M.

SHEET TITLE

STORM DRAINAGE AREA PLAN

SHEET NUMBER
C-500

ISSUE
3

CITY FILE No. D07-12-21-0228

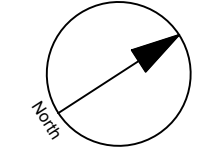
NOTES:

THE CONTRACTOR SHALL IMPLEMENT BEST MANAGEMENT PRACTICES, TO PROVIDE FOR PROTECTION OF THE AREA DRAINAGE SYSTEM AND THE RECEIVING WATERCOURSE, DURING CONSTRUCTION ACTIVITIES. THE CONTRACTOR ACKNOWLEDGES THAT FAILURE TO IMPLEMENT APPROPRIATE EROSION AND SEDIMENT CONTROL MEASURES MAY BE SUBJECT TO PENALTIES IMPOSED BY ANY APPLICABLE REGULATORY AGENCY.

- SILT FENCE TO BE ERECTED PRIOR TO EARTH WORKS BEING COMMENCED. SILT FENCE TO BE MAINTAINED UNTIL VEGETATION IS ESTABLISHED OR UNTIL START OF SUBSEQUENT PHASE.
- STRAW BALE SEDIMENT TRAPS TO BE CONSTRUCTED IN EXISTING ROAD SIDE DITCHES. TRAPS TO REMAIN AND BE MAINTAINED UNTIL VEGETATION IS ESTABLISHED.
- SILT SACK TO BE PLACED AND MAINTAINED UNDER COVER OF ALL CATCHBASINS. GEOTEXTILE SILT SACK IN STREET C/Bs TO REMAIN UNTIL ALL CURBS ARE CONSTRUCTED. GEOTEXTILE FABRIC IN RYCBs TO REMAIN UNTIL VEGETATION IS ESTABLISHED. ALL CATCHBASINS TO BE REGULARLY INSPECTED AND CLEANED, AS NECESSARY, UNTIL SOD AND CURBS ARE CONSTRUCTED.
- CONTRACTOR TO PROVIDE DETAILS ON LOCATION(S) AND DESIGN OF DEWATERING TRAP(S) PRIOR TO COMMENCING WORK. CONTRACTOR ALSO RESPONSIBLE FOR MAINTAINING TRAP(S) AND ADJUSTING SIZE(S) IF DEEMED REQUIRED BY THE ENGINEER DURING CONSTRUCTION.
- CONTRACTOR TO PROTECT EXISTING CATCHBASINS WITH FILTER CLOTH UNDER THE COVERS TO TRAP SEDIMENTATION. REFER TO IDENTIFIED STRUCTURES.
- WORKS NOTED ABOVE ARE TO BE INSTALLED, INSPECTED, MAINTAINED AND ULTIMATELY REMOVED BY SERVICING CONTRACTOR.
- THIS IS A "LIVING DOCUMENT" AND MAY BE MODIFIED IN THE EVENT THE PROPOSED CONTROL MEASURES ARE INSUFFICIENT.

LEGEND:

- LIGHT DUTY SILT FENCE AS PER OPSD-219.110
- SNOW FENCE
- STRAW BALE CHECK DAM AS PER OPSD-219.180
- ROCK CHECK DAM AS PER OPSD-219.210
- SILT SACK PLACED UNDER EXISTING CB COVER
- TEMPORARY MUD MAT 0.15m THICK 50mm CLEAR STONE ON NON WOVEN FILTER CLOTH



CLIENT



MAGIL LAURENTIENNE
ML Wellington Realty Investments Inc.
C/O ML DEVCO INC
651 Church Avenue N.
Ottawa (Ontario) K1Z 5G2
Tel: 613-686-6319

COPYRIGHT

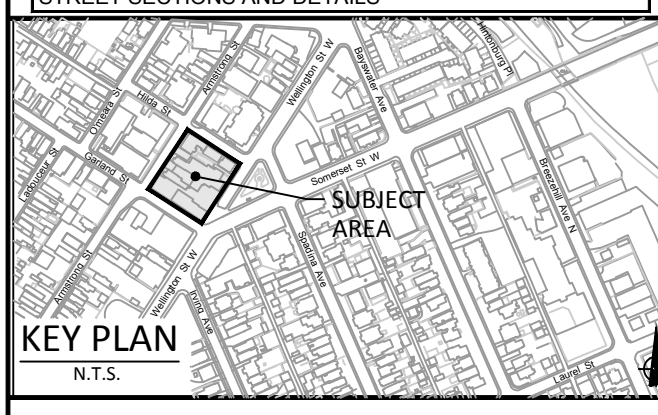
This drawing has been prepared solely for the intended use. Any reproduction or distribution for any purpose other than authorized by IBI Group is forbidden. Written dimensions shall have precedence over scaled dimensions. Contractors shall verify and be responsible for all dimensions and conditions on the job, and IBI Group shall be informed of any variations from the dimensions and conditions shown on the drawing. Shop drawings shall be submitted to IBI Group for general confirmation before proceeding with fabrication.

IBI Group Professional Services (Canada) Inc.
is a member of the IBI Group of companies.

ISSUES

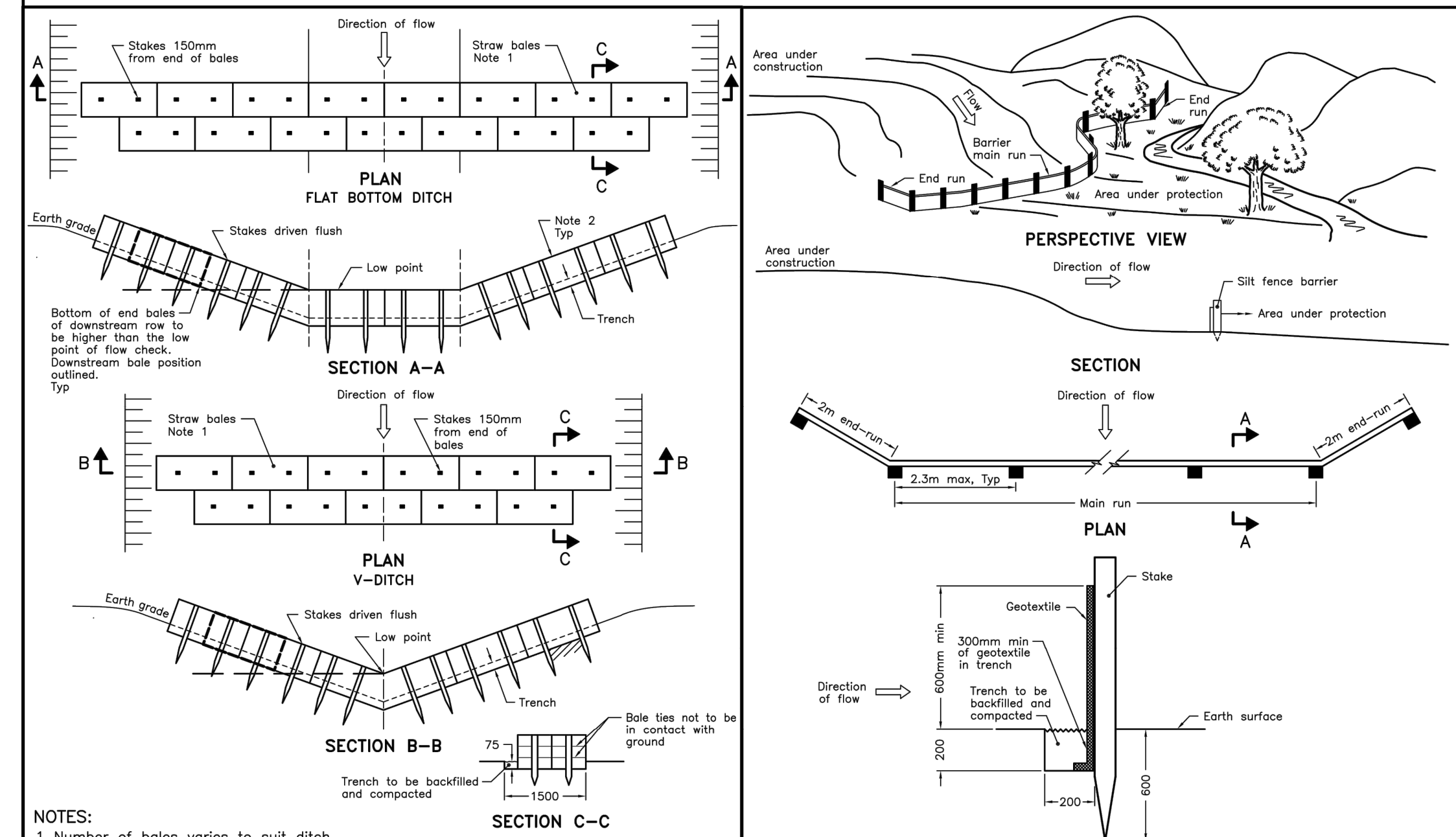
No.	DESCRIPTION	DATE
1	ISSUED FOR COORDINATION	2022-01-28
2	ISSUED FOR PERMITS	2022-09-16
3	REVISED AS PER CITY COMMENTS	2022-11-28
4		
5		

SEE 010, 011, 012 FOR NOTES, LEGEND, CB TABLE, STREET SECTIONS AND DETAILS.



LEGEND

- | | |
|--|---|
| FORTEEN CONSULTANTS INC.
286 Cooper Street, Suite 300
Ottawa, Ontario, K2P 2V7
T: 613.730.5709
F: 613.730.1136
E: info@forteen.com | Geotechnical Engineer
PATERSON GROUP
154 Colborne Road South
Ottawa, Ontario, K2E 7J5
T: 613.229.7281
E: info@patersongroup.ca |
| Geotechnical Engineer
TRANSPORTATION ENGINEER
CGH TRANSPORTATION INC.
113 Marlborough Avenue
Ottawa, Ontario, K2G 3Z1
T: 343.999.9117
E: cgh@cgtransportation.com | ARCHITECTS
RODERICK LAHEY ARCHITECTS
56 Beech Street
Ottawa, Ontario, K1S 3J6
T: 613.724.9932
E: adam@rodericklahey.ca |

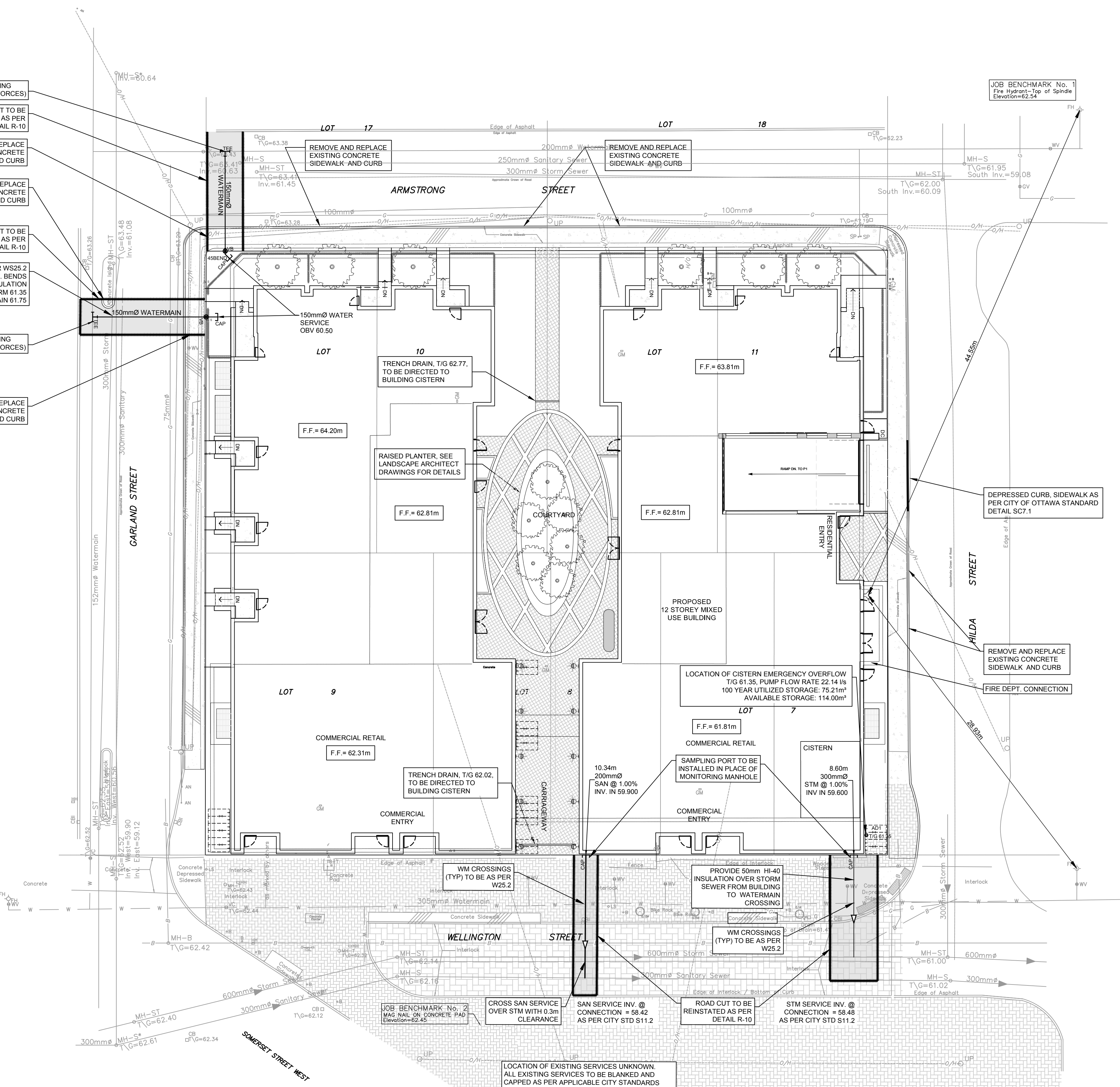


- NOTES:**
- Number of bales varies to suit ditch.
 - Straw bales to be butted tightly against adjoining bales and shaped to conform to the sides of the ditch to prevent water flow through barrier.
 - All dimensions are in millimetres unless otherwise shown.

ONTARIO PROVINCIAL STANDARD DRAWING
Nov 2006 Rev 1
STRAW BALE FLOW CHECK DAM
OPSD 219.180

- NOTE:**
- All dimensions are in millimetres unless otherwise shown.

ONTARIO PROVINCIAL STANDARD DRAWING
Nov 2006 Rev 1
LIGHT-DUTY SILT FENCE BARRIER
OPSD 219.110



SEAL



IBI GROUP
Suite 400 - 333 Preston Street
Ottawa, ON K1S 5N4 Canada
Tel: 613.225.1311 / 613.241.3300 Fax: 613.225.9868
ibigroup.com

PROJECT
979, WELLINGTON

PROJECT NO: 126031
DRAWN BY: J.B./D.P.S.
PROJECT MGR: J.I.M.

CHECKED BY: J.B.
APPROVED BY: J.I.M.

SHEET TITLE
EROSION AND SEDIMENTATION CONTROL PLAN

SHEET NUMBER C-900 **ISSUE** 3

CITY FILE No. D07-12-21-0228
Scale Check
Last Saved: September 16, 2022, by dsurna
Project: Monday, November 28, 2022 2:33:39 PM by Don Surma