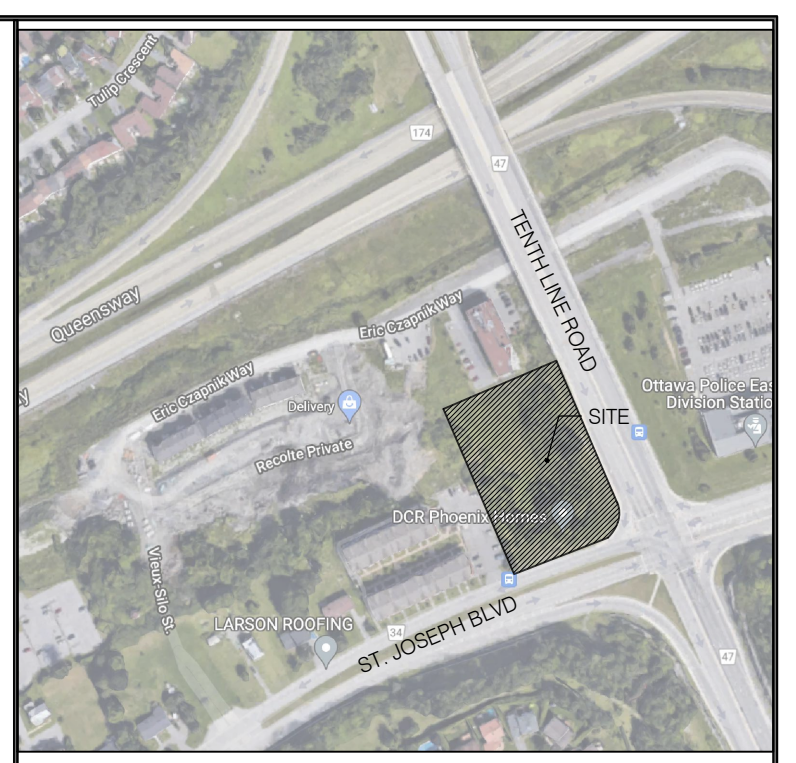




LEGEND:

- PROPERTY LINE
- TREE PRESERVATION FENCING
- EXISTING CONIFEROUS TREE TO BE REMOVED
- EXISTING DECIDUOUS TREE TO BE REMOVED
- EXISTING DECIDUOUS TREE TO REMAIN
- EXISTING CONIFEROUS TREE TO REMAIN



KEY MAP, NTS

L-TP1 GENERAL NOTES

- All general site information and conditions compiled from architects and engineers' plans and surveys.
- Do not scale this drawing.
- Report any discrepancies prior to commencing work. No responsibility is born by the Landscape Architect for unknown subsurface conditions.
- Reinstate all areas and items damaged as a result of construction activities to the satisfaction of the Landscape Architect.
- Drawing may not be used for construction until signed by Landscape Architect as issued for construction.
- The accuracy of the position of utilities is not guaranteed.
- Individual utility co. must be contacted for confirmation of utility existence and location prior to digging.
- This drawing is an instrument of service and requires the permission of the Landscape Architect for use. Copyright is reserved by the Landscape Architect, David M. Lashley.

NO.	DATE	DESCRIPTION
2	2021-11-25	ISSUED FOR SITE PLAN
1	2021-09-28	ISSUED FOR COORDINATION

NO. DATE DESCRIPTION

SEAL:

NORTH:

LASHLEY + ASSOCIATES
 LANDSCAPE ARCHITECTURE AND SITE ENGINEERING

805 805 CLADSTONE AVENUE
 OTTAWA, ON K1Y 4S6
 T 613 233 9879
 F 613 238 469
 W lashley.com
 E Mail@lashley.com

ROSSMANN ARCHITECTURE
 Rossmann Architecture
 88 boul. St. Joseph
 Gatineau, QC, J8Y 3W5
 P. 819-600-1555

NOVATECH
 Engineers, Planners & Landscape Architects
 Suite 200, 240 Michael Cowpland Drive
 Ottawa, Ontario, Canada K2M 1Y6
 Telephone: (613) 254-9643
 Facsimile: (613) 254-5967
 Website: www.novatech-erig.com

PROJECT:

**Hillside Commons
 Apartments Residential Development**
 3277 St. Joseph Blvd.
 Orléans, Ottawa, ON K1C 1T1

DRAWING TITLE:

**PRE-DEVELOPMENT
 VEGETATION**

DATE: 2021-09-23 **DRAWING NO.:**

SCALE: AS SHOWN

DRAWN BY: NG-RP

LA PROJECT NO. 21823-1 **L-TP1**

1 PRE-DEVELOPMENT VEGETATION

TREES ON PRIVATE PROPERTY

NO.	SPECIES	DBH (CM)	HEALTH	COMMENTS
3	Crack Willow / <i>Salix fragilis</i>	12-13-15-19-21-24	Good	
4	Black Walnut / <i>Juglans nigra</i>	12	Fair	Some bark damage
5	Austrian Pine / <i>Pinus nigra</i>	36	Good	
6	Austrian Pine / <i>Pinus nigra</i>	22	Fair	Poor pruning
7	Austrian Pine / <i>Pinus nigra</i>	25	Good	
8	Trembling Aspen / <i>Populus tremuloides</i>	38	Good	
9	Trembling Aspen / <i>Populus tremuloides</i>	51	Good	
10	Manitoba Maple / <i>Acer negundo</i>	40	Poor	Broken stem and dead branches

11	Manitoba Maple / <i>Acer negundo</i>	18-20	Good	
12	American Elm / <i>Ulmus americana</i>	18	Good	
13	American Elm / <i>Ulmus americana</i>	14	Good	
14	American Elm / <i>Ulmus americana</i>	10.5	Good	
16	Basswood / <i>Tilia americana</i>	20-24-33	Good	
18	White Spruce / <i>Picea glauca</i>	24	Good	
19	Trembling Aspen / <i>Populus tremuloides</i>	17-19-23	Good	
20	Manitoba Maple / <i>Acer negundo</i>	13	Good	

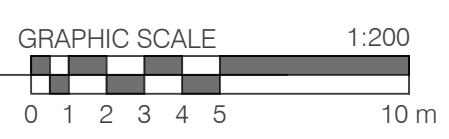
21	Trembling Aspen / <i>Populus tremuloides</i>	29	Good	
----	--	----	------	--

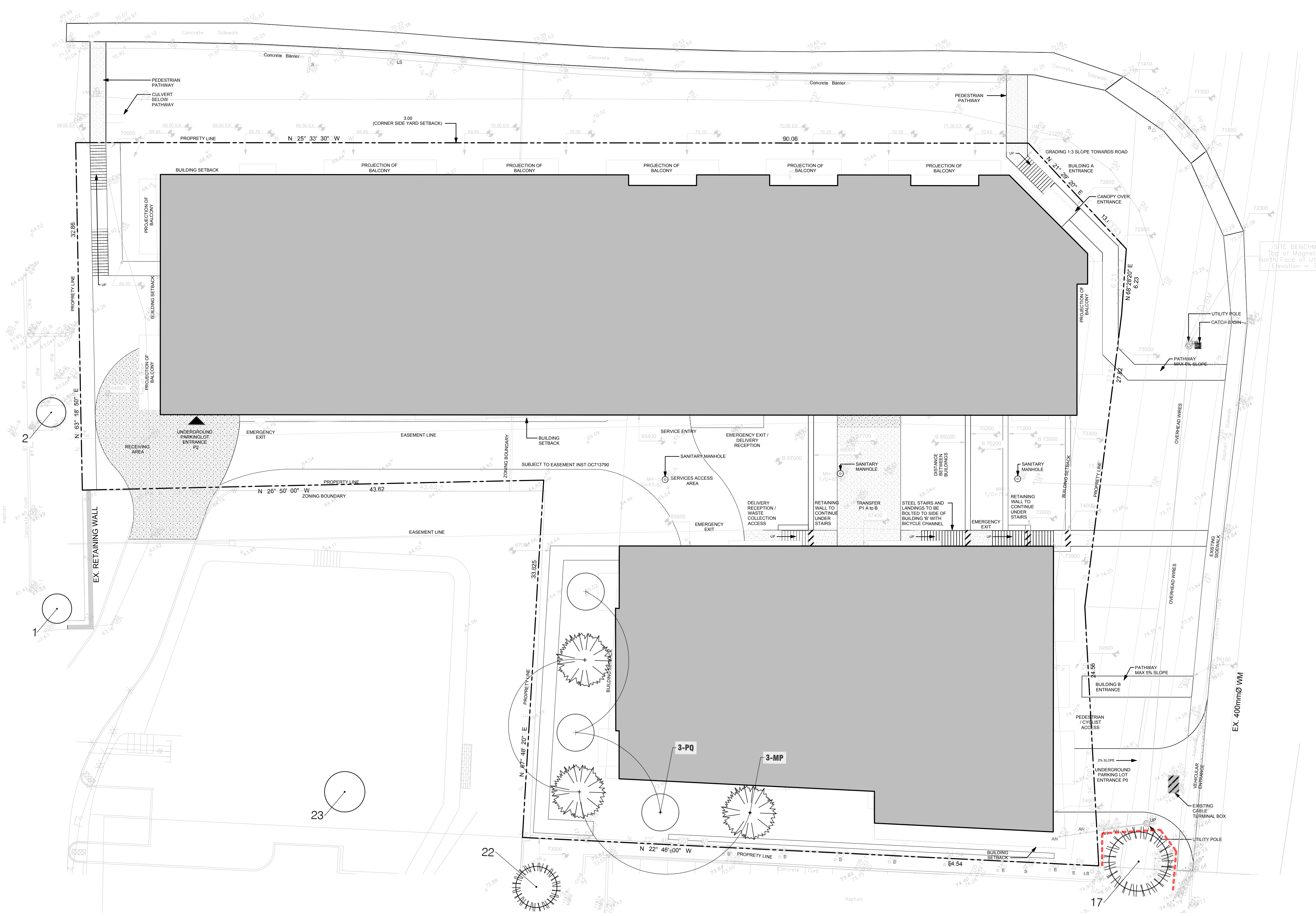
TREES ON ADJACENT PRIVATE PROPERTY

NO.	SPECIES	DBH (CM)	HEALTH	COMMENTS
1	Red Maple / <i>Acer rubrum</i>	13	Good	Adjacent property
2	Red Maple / <i>Acer rubrum</i>	13	Good	Adjacent property
22	White Spruce / <i>Picea glauca</i>	21	Poor	Adjacent property
23	Trembling Aspen / <i>Populus tremuloides</i>	19	Good	Adjacent property

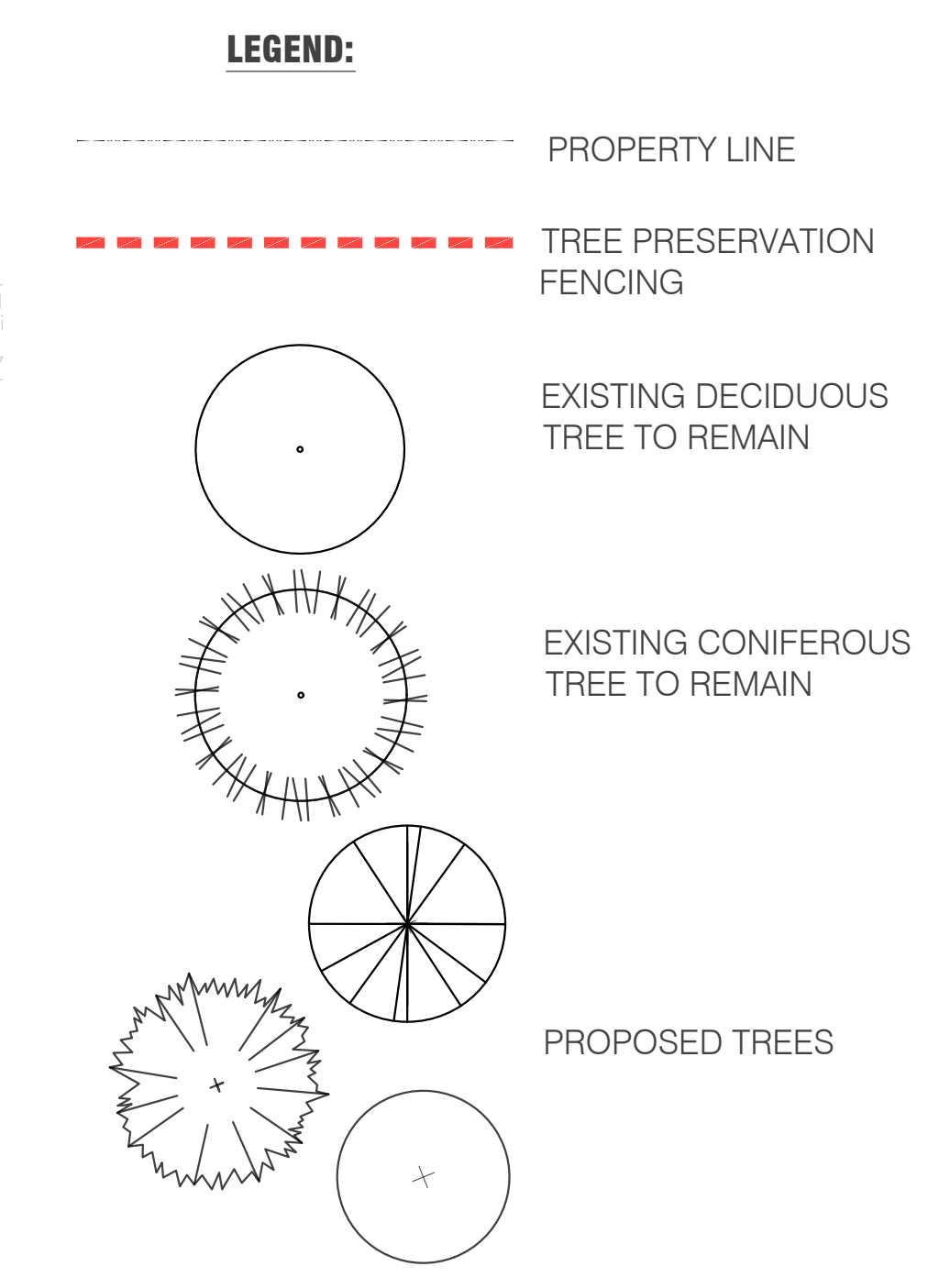
TREES ON CITY PROPERTY

NO.	SPECIES	DBH (CM)	HEALTH	COMMENTS
6	Austrian Pine / <i>Pinus nigra</i>	22	Fair	Poor pruning
15	Manitoba Maple / <i>Acer negundo</i>	19-21	Good	
17	Scots Pine / <i>Pinus sylvestris</i>	29	Fair	Tangled with power lines





TREES TO REMAIN				
NO.	SPECIES	DBH (CM)	HEALTH	COMMENTS
1	Red Maple / <i>Acer rubrum</i>	13	Good	Adjacent property
2	Red Maple / <i>Acer rubrum</i>	13	Good	Adjacent property
17	Scots Pine / <i>Pinus sylvestris</i>	29	Fair	Tangled with power lines
22	White Spruce / <i>Picea glauca</i>	21	Poor	Adjacent property
23	Trembling Aspen / <i>Populus tremuloides</i>	19	Good	Adjacent property

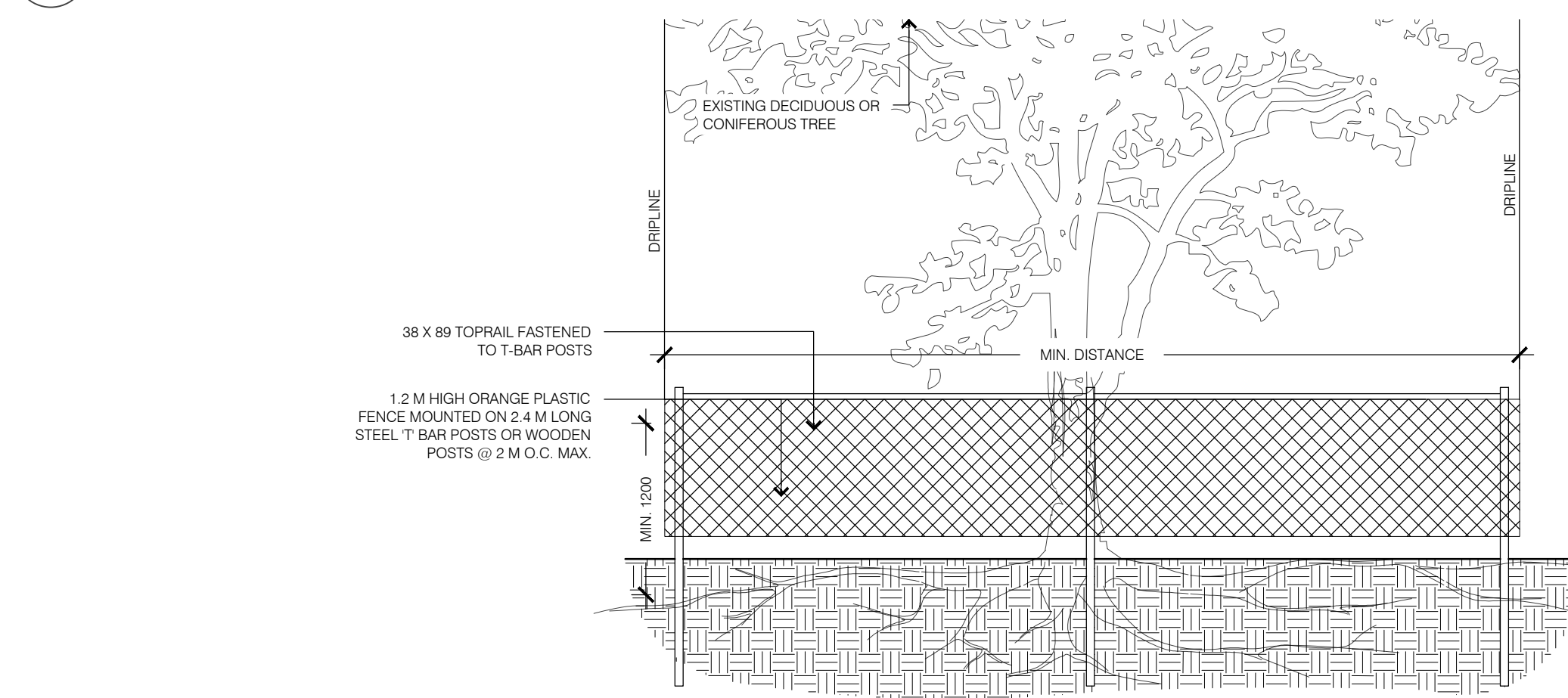


KEY	QTY	BOTANICAL NAME	COMMON NAME	SIZE	COMMENTS
DECIDUOUS TREES					
MP	3	<i>Malus purple germ</i>	Purple Gem Crabapple	50mm	W.B.
AC	3	<i>Amelanchier canadensis</i>	Serviceberry	150cm	W.B.



- KEY MAP, NTS**
- L-TP2 GENERAL NOTES**
- All general site information and conditions compiled from architects and engineer's plans and surveys.
 - Do not scale this drawing.
 - Report any discrepancies prior to commencing work. No responsibility is born by the Landscape Architect for unknown subsurface conditions.
 - Reinstatement all areas and items damaged as a result of construction activities to the satisfaction of the Landscape Architect.
 - Drawing may not be used for construction until signed by Landscape Architect as issued for construction.
 - The accuracy of the position of utilities is not guaranteed.
 - Individual utility co. must be contacted for confirmation of utility existence and location prior to digging.
 - This drawing is an instrument of service and requires the permission of the Landscape Architect for use. Copyright is reserved by the Landscape Architect, David M. Lashley.

1 POST DEVELOPMENT VEGETATION



- NOTES**
- UNDER THE GUIDANCE OF AN ARBORIST, ERECT A MODULAR FENCE AT THE CRITICAL ROOT ZONE (CRZ) OF TREES WHERE THE CRZ IS ESTABLISHED AS BEING 10 CENTIMETERS FROM THE TRUNK FOR EVERY CENTIMETER OF TRUNK DIAMETER AT BREAST HEIGHT.
 - TREE PROTECTION SHALL BE ERECTED TO PROVIDE A CONTINUOUS BARRICADE BETWEEN DESIGNATED TREES AND THE WORK AREA PRIOR TO CONSTRUCTION.
 - TUNNEL OR BORE WHEN DIGGING WITHIN THE CRZ OF A TREE.
 - ENSURE ALL EQUIPMENT AND CONSTRUCTION RELATED MATERIAL ARE NOT PLACED OR TEMPORARILY STORED WITHIN THE CRZ.
 - ENSURE EXHAUST FUMES FROM ALL EQUIPMENT ARE NOT DIRECTED TOWARDS ANY TREES CANOPY.
 - FLOODING OR DEPOSITION OF SEDIMENT SHALL BE PREVENTED WHERE TREES ARE LOCATED.
 - ALL DISTURBED ROOT SYSTEMS SHALL BE EXPOSED AND BACKFILLED IN ONE CONTINUOUS OPERATION TO MINIMIZE DESICCATION.
 - EXPOSED ROOTS SHALL BE KEPT CONTINUOUSLY MOIST DURING EXCAVATION.
 - REMOVE BROKEN AND DAMAGED ROOTS WITH SHARP PRUNING SHEARS.
 - THE TREE PROTECTION MODULAR FENCE IS TEMPORARY, SHALL BE MAINTAINED AT ALL TIMES DURING CONSTRUCTION OPERATIONS, AND SHALL BE REMOVED UPON COMPLETION OF CONSTRUCTION.

2 TREE PROTECTION FENCING

2	2021-11-25	ISSUED FOR SITE PLAN
1	2021-10-28	ISSUED FOR COORDINATION

NO. DATE DESCRIPTION

SEAL: [Professional Seal]

NORTH: [North Arrow]

LASHLEY + ASSOCIATES
 LANDSCAPE ARCHITECTURE AND SITE ENGINEERING

888 GLADSTONE AVENUE
 OTTAWA, ON K1T 4B6
 T 613 233 8679
 F 613 233 4901
 W LashleyA.com
 E Mail@lashleyA.com

ROSSMANN ARCHITECTURE
 Rossmann Architecture
 88 boul. St. Joseph
 Gatineau, QC, J6Y 3W5
 P 613-600-1555

NOVATECH
 Engineers, Planners & Landscape Architects
 Suite 200, 240 Michael Cowpland Drive
 Ottawa, Ontario, Canada K0M 1P6
 Telephone (613) 254-9643
 Facsimile (613) 254-5667
 Website www.novatech-eng.com

PROJECT:

**Hillside Commons
 Apartments Residential Development**
 3277 St. Joseph Blvd.
 Orléans, Ottawa, ON K1C 1T1

DRAWING TITLE:

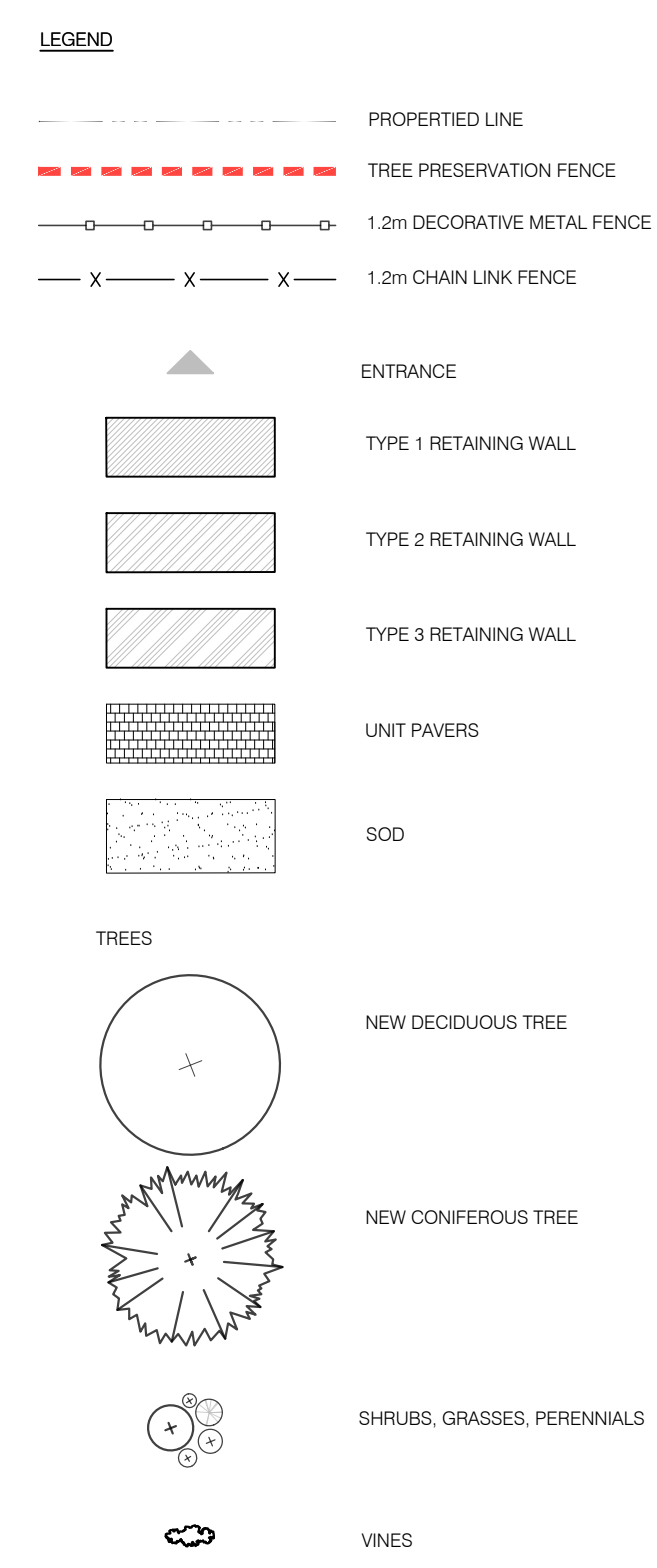
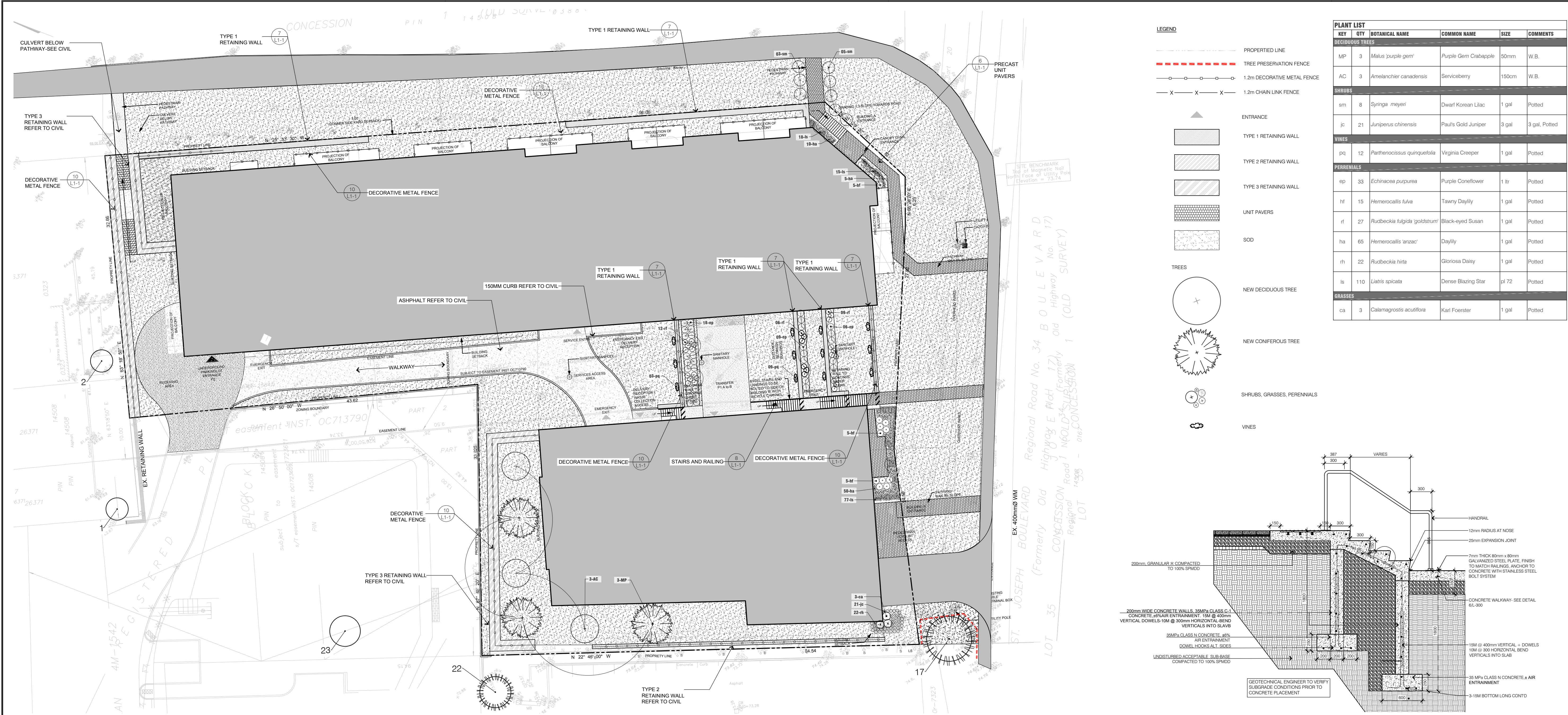
**POST-DEVELOPMENT
 VEGETATION**

DATE: 2021-09-17 **DRAWING NO.:**

SCALE: AS SHOWN

DRAWN BY: NG-RP

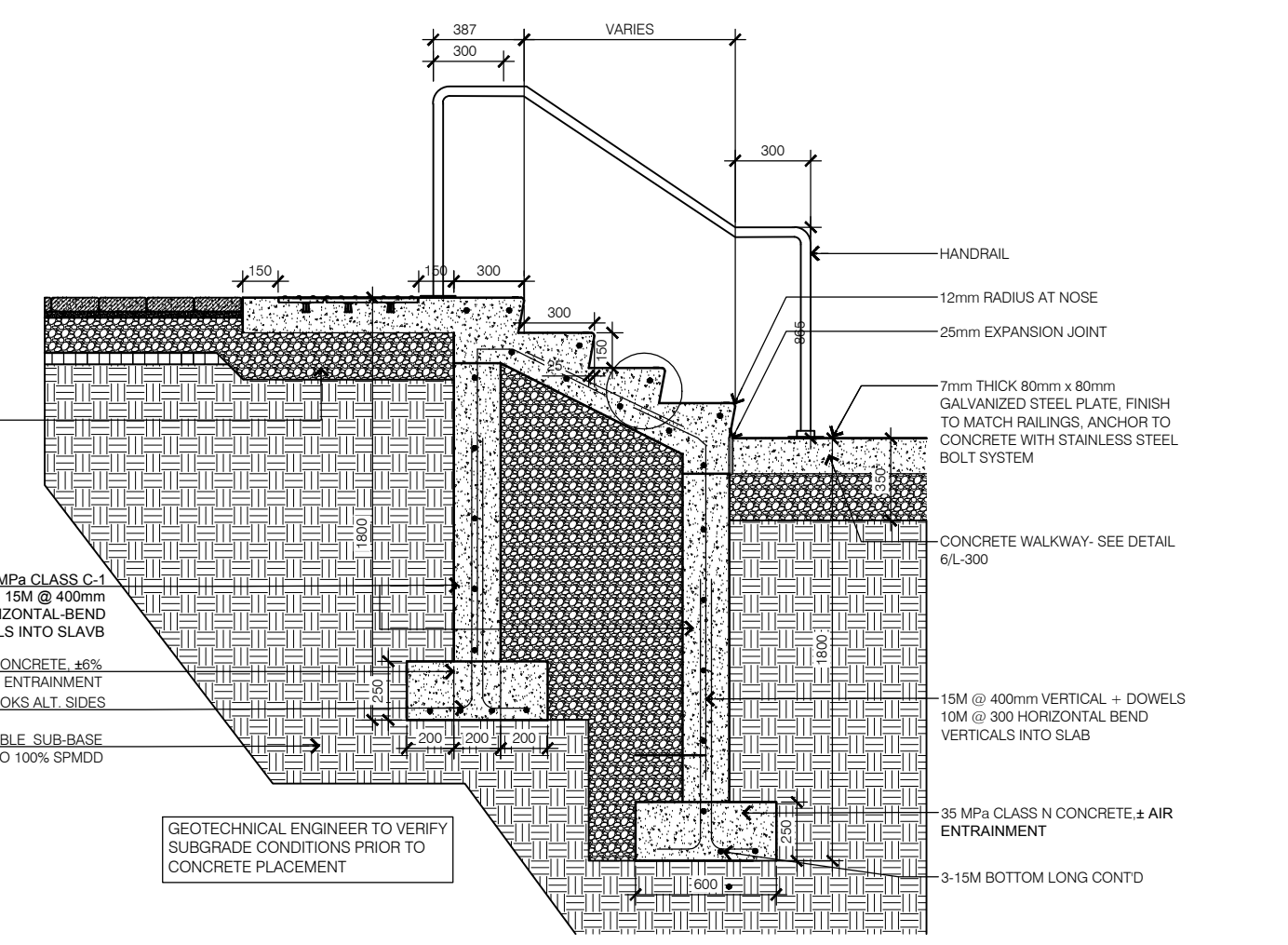
LA PROJECT NO. 21823-1 **L-TP2**



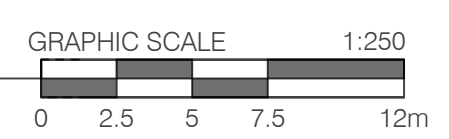
KEY	QTY	BOTANICAL NAME	COMMON NAME	SIZE	COMMENTS
DECIDUOUS TREES					
MP	3	<i>Malus 'purple gem'</i>	Purple Gem Crabapple	50mm	W.B.
AC	3	<i>Amelanchier canadensis</i>	Serviceberry	150cm	W.B.
SHRUBS					
sm	8	<i>Syringa 'meyer'</i>	Dwarf Korean Lilac	1 gal	Potted
jc	21	<i>Juniperus chinensis</i>	Paul's Gold Juniper	3 gal	3 gal Potted
VINES					
pq	12	<i>Parthenocissus quinquefolia</i>	Virginia Creeper	1 gal	Potted
PERENNIALS					
ep	33	<i>Echinacea purpurea</i>	Purple Coneflower	1 tr	Potted
hf	15	<i>Hemerocallis 'lutea'</i>	Tawny Daylily	1 gal	Potted
ri	27	<i>Rudbeckia fulgida 'goldsturm'</i>	Black-eyed Susan	1 gal	Potted
ha	65	<i>Hemerocallis 'arzac'</i>	Daylily	1 gal	Potted
rh	22	<i>Rudbeckia hirta</i>	Gloriosa Daisy	1 gal	Potted
ls	110	<i>Liatris spicata</i>	Dense Blazing Star	pl 72	Potted
GRASSES					
ca	3	<i>Calamagrostis acutiflora</i>	Karl Foerster	1 gal	Potted



- KEY MAP, NTS**
- L1-1 GENERAL NOTES**
- All general site information and conditions compiled from architects and engineer's plans and surveys.
 - Do not scale this drawing.
 - Report any discrepancies prior to commencing work. No responsibility is born by the Landscape Architect for unknown subsurface conditions.
 - Remediate all areas and items damaged as a result of construction activities to the satisfaction of the Landscape Architect.
 - Drawing may not be used for construction until signed by Landscape Architect as issued for construction.
 - The accuracy of the position of utilities is not guaranteed.
 - Individual utility co. must be contacted for confirmation of utility existence and location prior to digging.
 - This drawing is an instrument of service and requires the permission of the Landscape Architect for use. Copyright is reserved by the Landscape Architect, David M. Lashley.

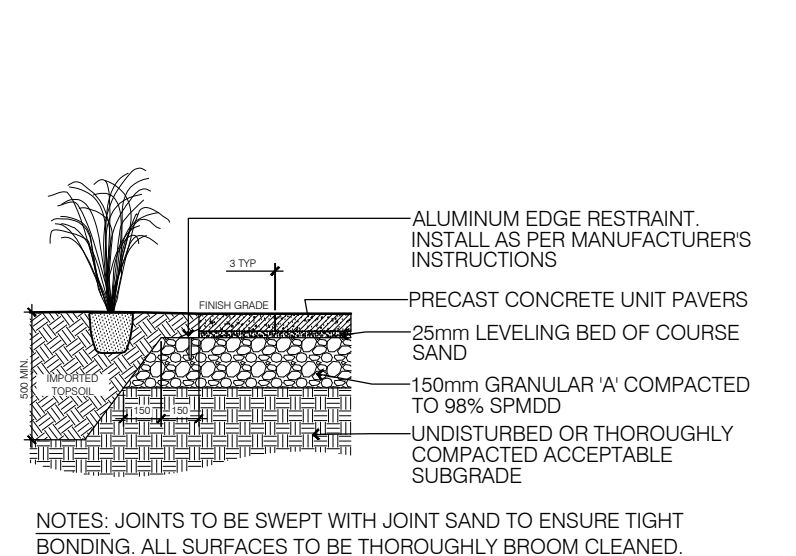
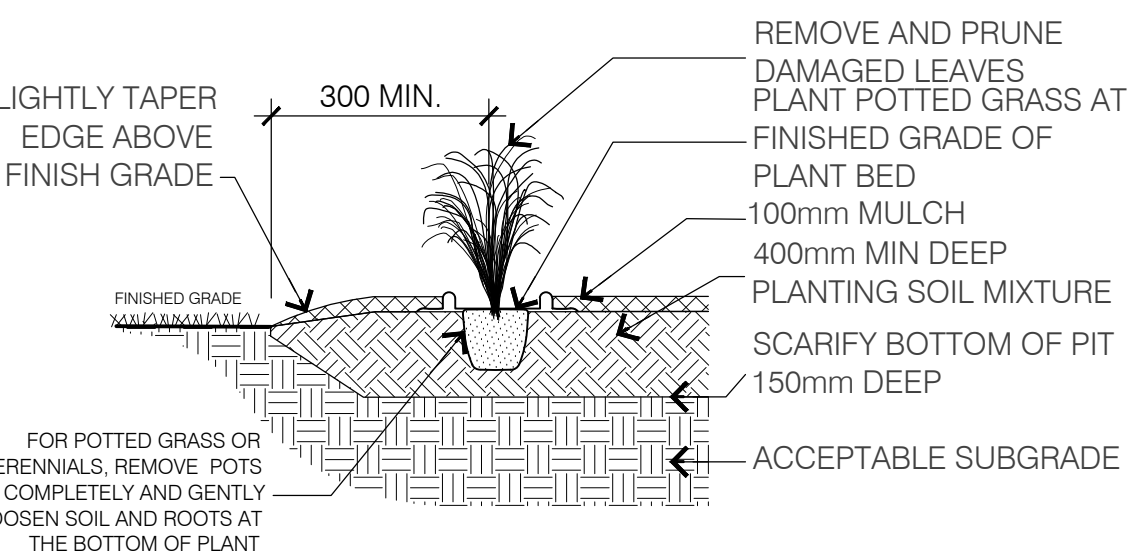
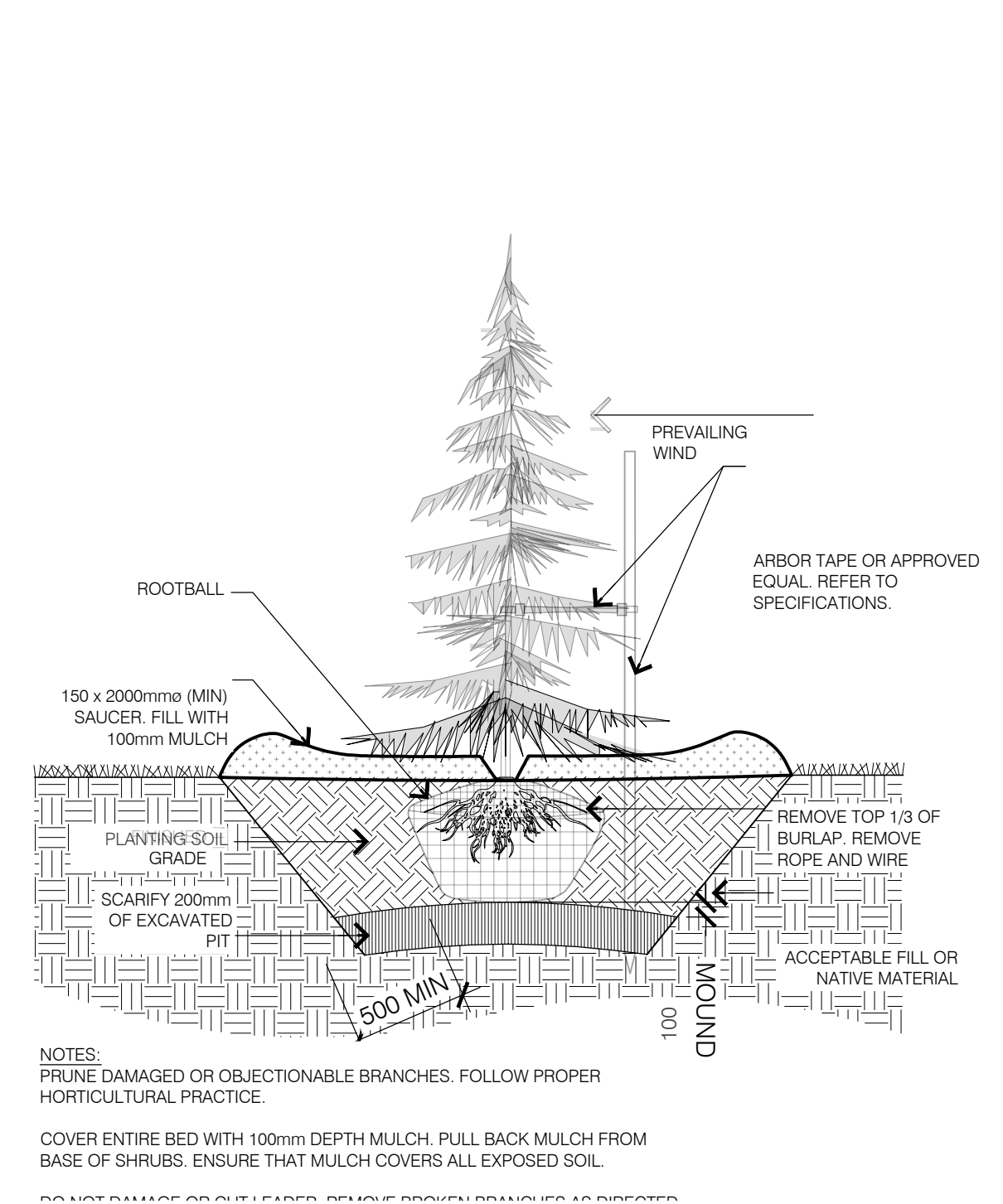
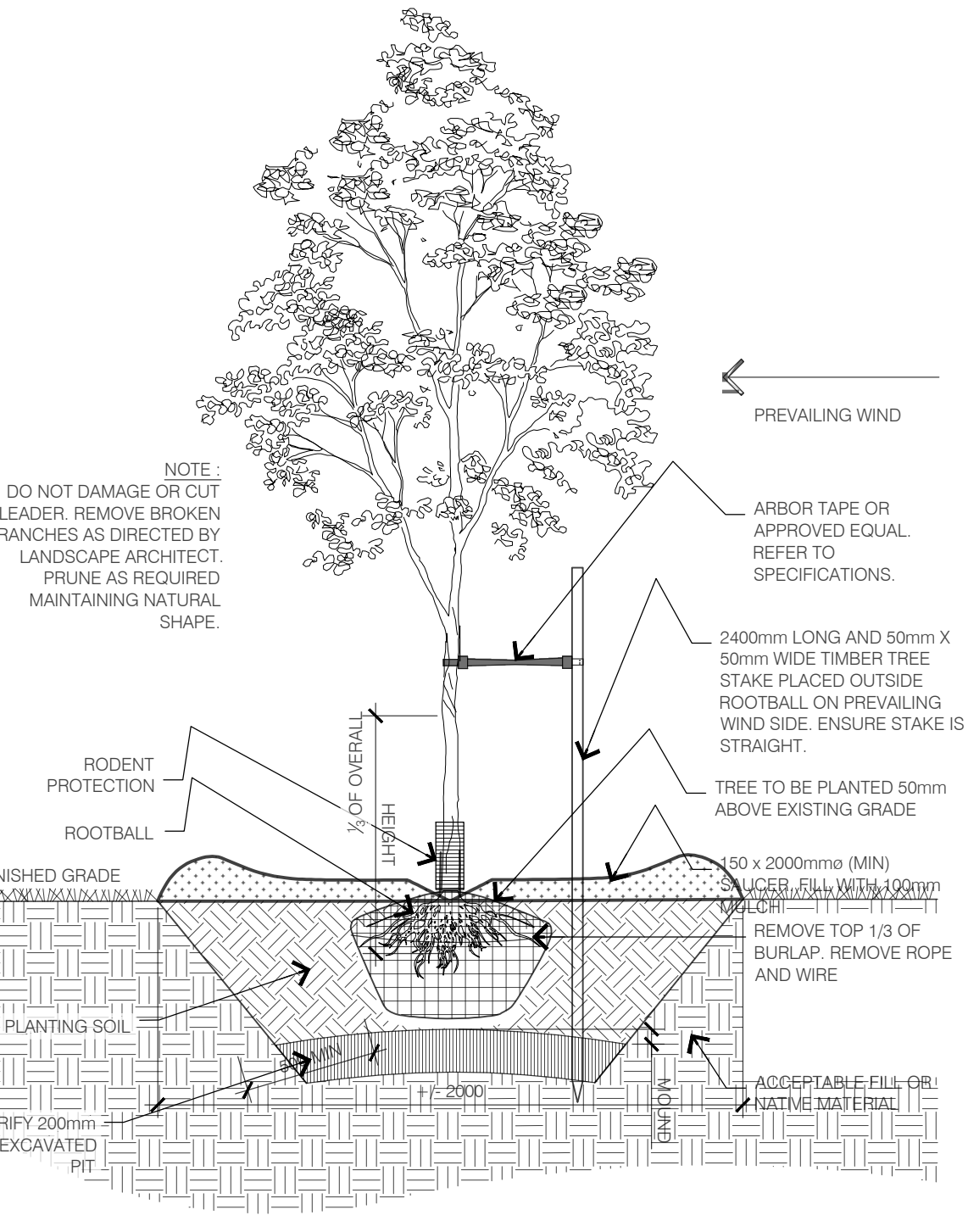


1 LANDSCAPE PLAN
L1-1



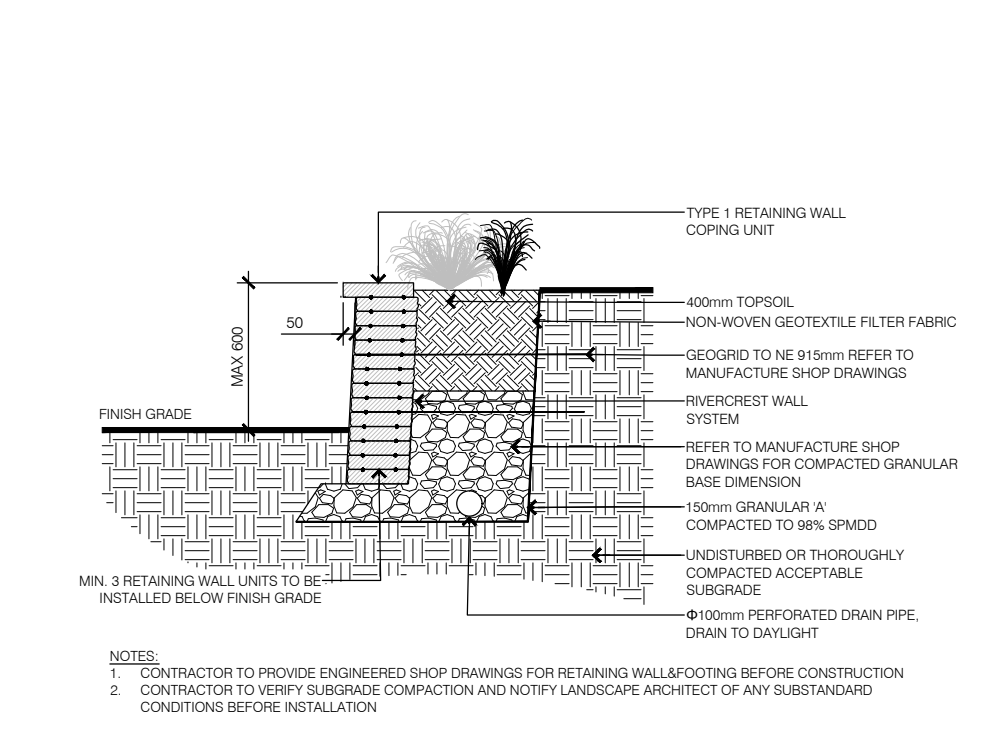
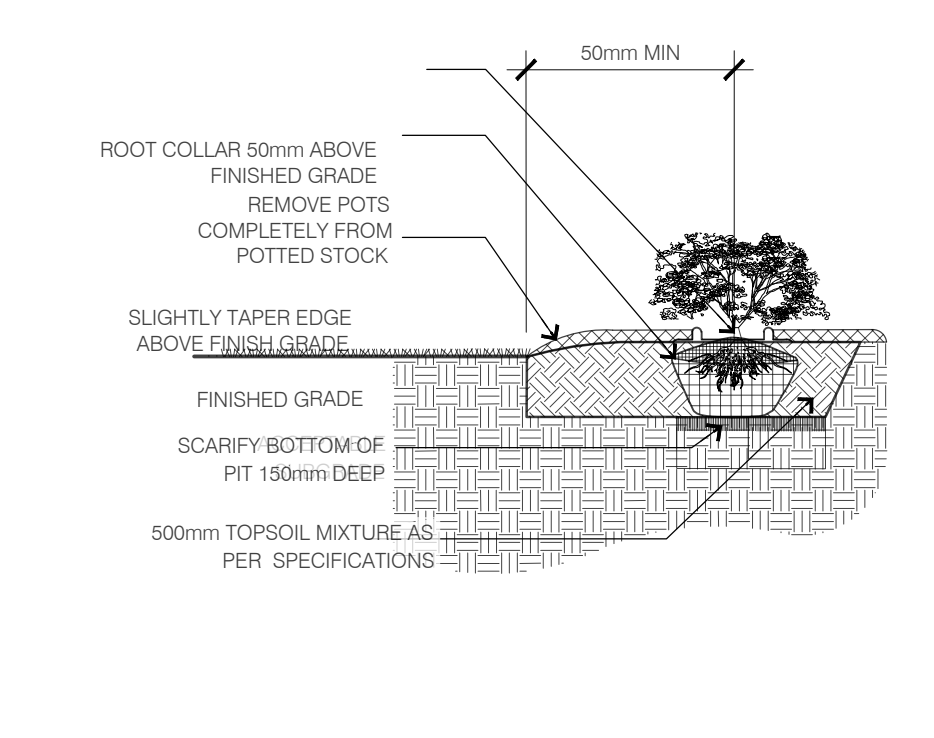
8 STAIRS AND RAILING
L1-1

2	2021-12-10	ISSUED FOR SPA
1	2021-11-24	ISSUED FOR REVIEW



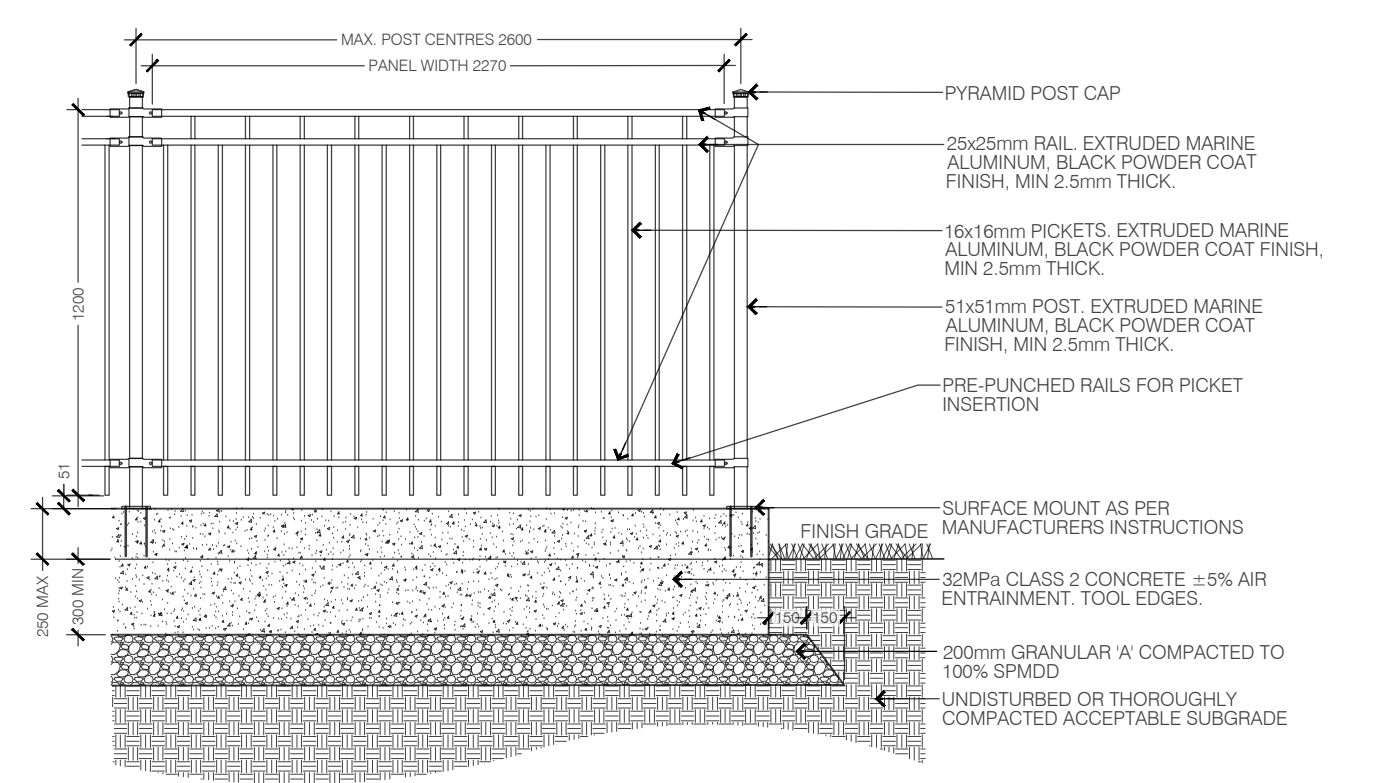
4 GRASS/PERENNIALS PLANTING
L1-1

6 PRECAST UNIT PAVERS
L1-1



5 SHRUB PLANTING
L1-1

7 TYPE 1 RETAINING WALL
L1-1



10 DECORATIVE METAL FENCE
L1-1

NO. DATE DESCRIPTION

SEAL: [Professional Seal]

NORTH: [North Arrow]

LASHLEY + ASSOCIATES
LANDSCAPE ARCHITECTURE AND SITE ENGINEERING

NOVATECH
Engineers, Planners & Landscape Architects

ROSSMANN ARCHITECTURE
Rossmann Architecture
88 Boul. St. Joseph
Gatineau, QC J8Y 3W5
P. 819-600-1555

PROJECT:
Hillside Commons
Apartments Residential Development
3277 St. Joseph Blvd.
Orléans, Ottawa, ON K1C 1T1

DRAWING TITLE:
LANDSCAPE PLAN

DATE: 2021-09-17
SCALE: AS SHOWN
DRAWN BY: NG-RP
LA PROJECT NO.: 21823-1

DRAWING NO.: L1-1