

LEGEND:

- PROPERTY LINE
- TREE PRESERVATION FENCING
- EXISTING CONIFEROUS TREE TO BE REMOVED
- EXISTING DECIDUOUS TREE TO BE REMOVED
- EXISTING DECIDUOUS TREE TO REMAIN
- EXISTING CONIFEROUS TREE TO REMAIN



KEY MAP, NTS

L-TP1 GENERAL NOTES

- All general site information and conditions compiled from architects and engineers' plans and surveys.
- Do not scale this drawing.
- Report any discrepancies prior to commencing work. No responsibility is born by the Landscape Architect for unknown subsurface conditions.
- Reinstlate all areas and items damaged as a result of construction activities to the satisfaction of the Landscape Architect.
- Drawing may not be used for construction until signed by Landscape Architect as issued for construction.
- The accuracy of the position of utilities is not guaranteed.
- Individual utility co. must be contacted for confirmation of utility existence and location prior to digging.
- This drawing is an instrument of service and requires the permission of the Landscape Architect for use. Copyright is reserved by the Landscape Architect, David M. Lashley.

NO.	DATE	DESCRIPTION
4	2022-05-17	ISSUED FOR SPA
3	2022-03-22	ISSUED FOR SITE PLAN
2	2021-11-25	ISSUED FOR SITE PLAN
1	2021-09-28	ISSUED FOR COORDINATION

NO. DATE DESCRIPTION

SEAL:

NORTH:

LASHLEY ASSOCIATES
LANDSCAPE ARCHITECTURE AND SITE ENGINEERING

805 800 GLACIETTE AVENUE
OTTAWA, ON K1V 4B6
T 613 233 9879
F 613 233 4857
W LashleyA.com
E Mail@LashleyA.com

ROSSMANN ARCHITECTURE
Rossmann Architecture
88 boul. St. Joseph
Gatineau, QC, J8Y 3W5
P 819-600-1555

NOVATECH
Engineers, Planners & Landscape Architects
Suite 200, 240 Michael Compend Drive
Ottawa, Ontario, Canada K2M 1Y6
Telephone (613) 254-9643
Facsimile (613) 254-5867
Website www.novatech-eng.com

PROJECT:

**Hillside Commons
Apartments Residential Development**
3277 St. Joseph Blvd.
Orléans, Ottawa, ON K1C 1T1

DRAWING TITLE:

**PRE-DEVELOPMENT
VEGETATION**

DATE: 2021-09-23 **DRAWING NO.:**

SCALE: AS SHOWN

DRAWN BY: NG-RP

LA PROJECT NO. 21823-1 **L-TP1**

1 PRE-DEVELOPMENT VEGETATION

TREES ON PRIVATE PROPERTY

NO.	SPECIES	DBH (CM)	HEALTH	COMMENTS
3	Crack Willow / <i>Salix fragilis</i>	12-13-15-19-21-24	Good	
4	Black Walnut / <i>Juglans nigra</i>	12	Fair	Some bark damage
5	Austrian Pine / <i>Pinus nigra</i>	36	Good	
6	Austrian Pine / <i>Pinus nigra</i>	22	Fair	Poor pruning
7	Austrian Pine / <i>Pinus nigra</i>	25	Good	
8	Trembling Aspen / <i>Populus tremuloides</i>	38	Good	
9	Trembling Aspen / <i>Populus tremuloides</i>	51	Good	
10	Manitoba Maple / <i>Acer negundo</i>	40	Poor	Broken stem and dead branches

11	Manitoba Maple / <i>Acer negundo</i>	18-20	Good	
12	American Elm / <i>Ulmus americana</i>	18	Good	
13	American Elm / <i>Ulmus americana</i>	14	Good	
14	American Elm / <i>Ulmus americana</i>	10.5	Good	
16	Basswood / <i>Tilia americana</i>	20-24-33	Good	
18	White Spruce / <i>Picea glauca</i>	24	Good	
19	Trembling Aspen / <i>Populus tremuloides</i>	17-19-23	Good	
20	Manitoba Maple / <i>Acer negundo</i>	13	Good	

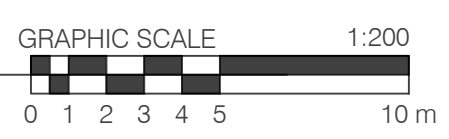
21	Trembling Aspen / <i>Populus tremuloides</i>	29	Good	
----	--	----	------	--

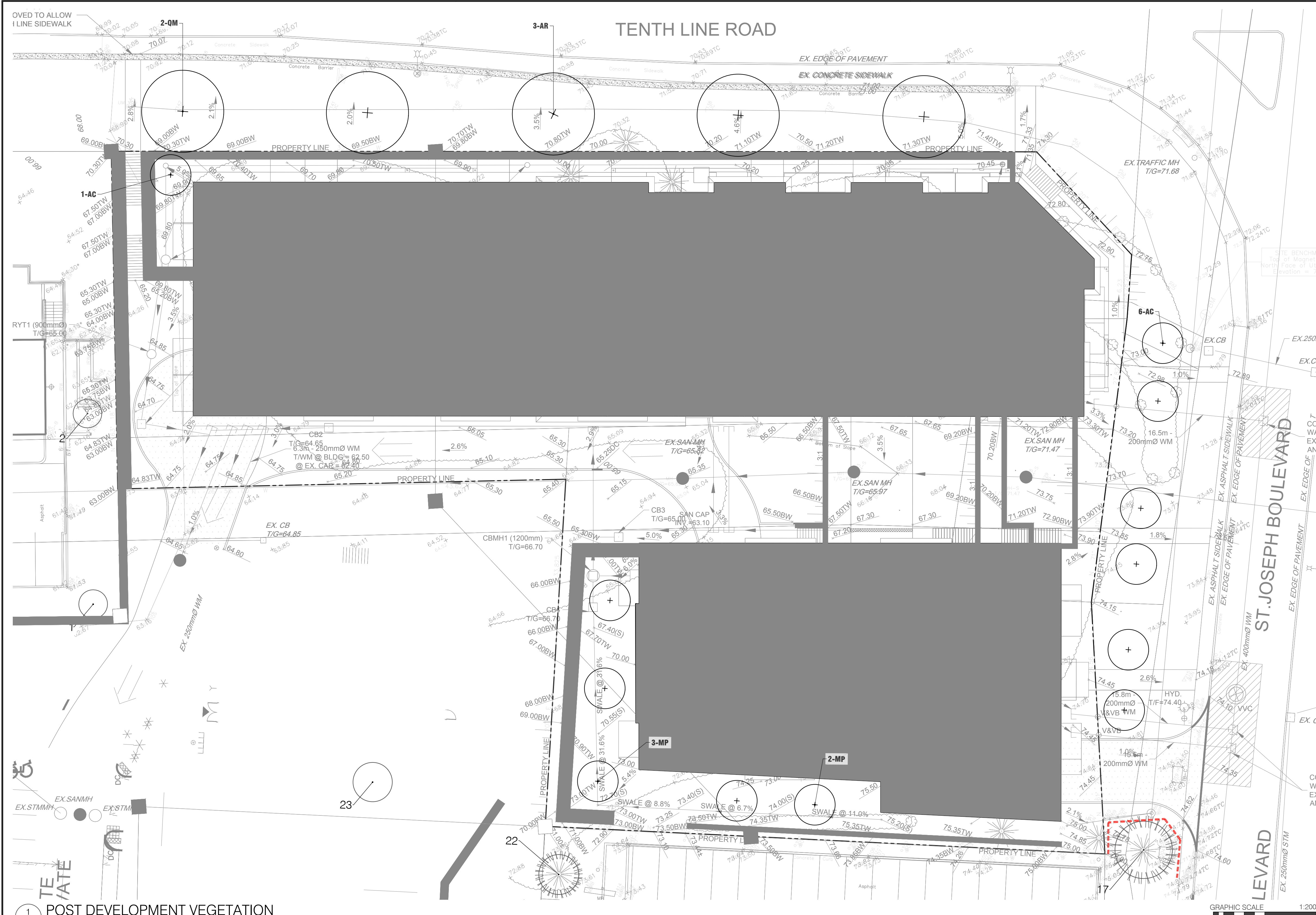
TREES ON ADJACENT PRIVATE PROPERTY

NO.	SPECIES	DBH (CM)	HEALTH	COMMENTS
1	Red Maple / <i>Acer rubrum</i>	13	Good	Adjacent property
2	Red Maple / <i>Acer rubrum</i>	13	Good	Adjacent property
22	White Spruce / <i>Picea glauca</i>	21	Poor	Adjacent property
23	Trembling Aspen / <i>Populus tremuloides</i>	19	Good	Adjacent property

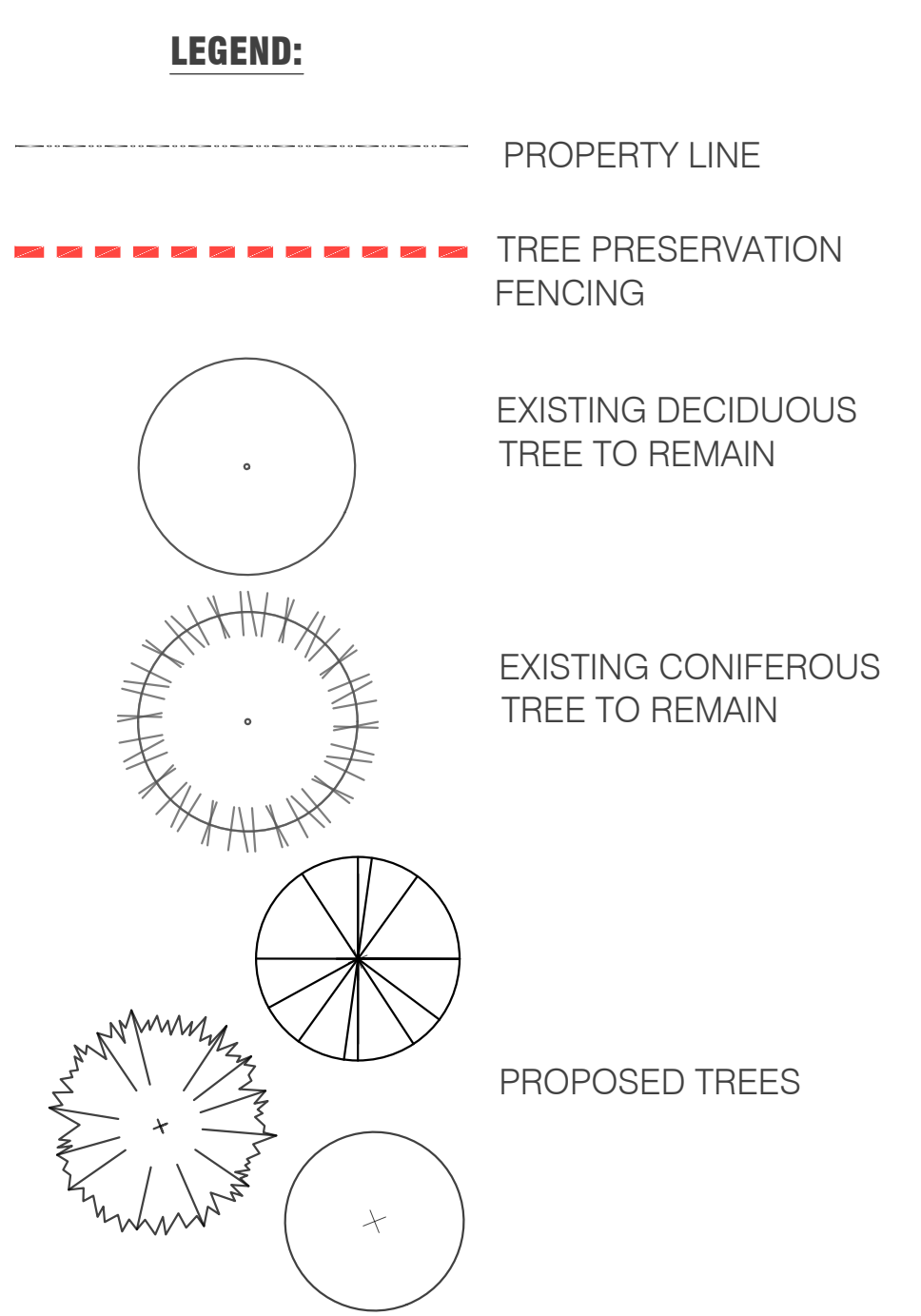
TREES ON CITY PROPERTY

NO.	SPECIES	DBH (CM)	HEALTH	COMMENTS
6	Austrian Pine / <i>Pinus nigra</i>	22	Fair	Poor pruning
15	Manitoba Maple / <i>Acer negundo</i>	19-21	Good	
17	Scots Pine / <i>Pinus sylvestris</i>	29	Fair	Tangled with power lines

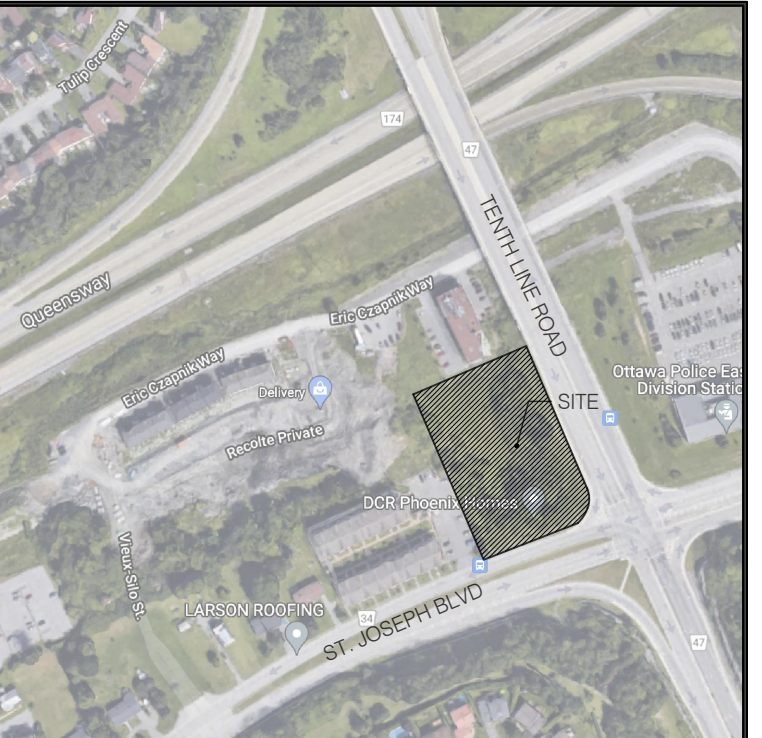




TREES TO REMAIN				
NO.	SPECIES	DBH (CM)	HEALTH	COMMENTS
1	Red Maple / <i>Acer rubrum</i>	13	Good	Adjacent property
2	Red Maple / <i>Acer rubrum</i>	13	Good	Adjacent property
17	Scots Pine / <i>Pinus sylvestris</i>	29	Fair	Tangled with power lines
22	White Spruce / <i>Picea glauca</i>	21	Poor	Adjacent property
23	Trembling Aspen / <i>Populus tremuloides</i>	19	Good	Adjacent property

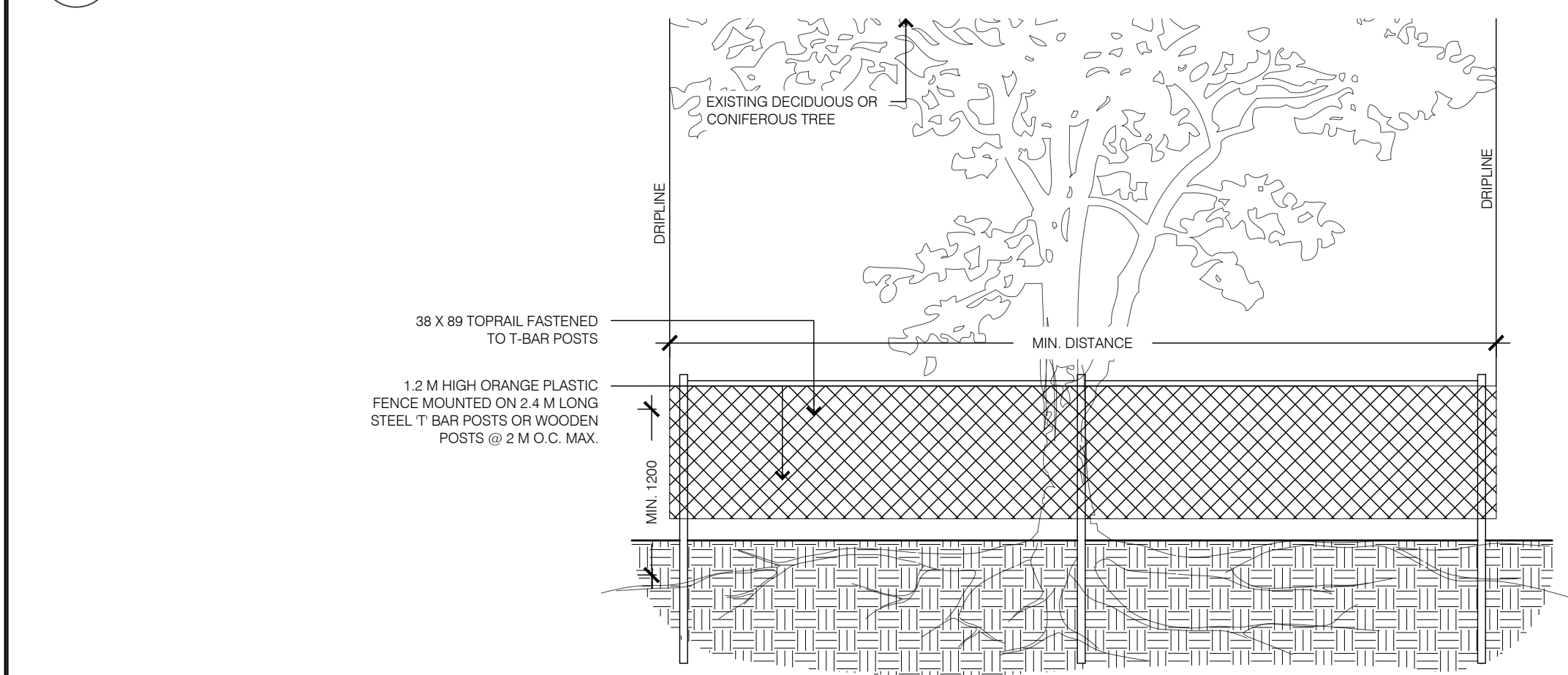


PLANT LIST					
KEY	QTY	BOTANICAL NAME	COMMON NAME	SIZE	COMMENTS
DECIDUOUS TREES					
AC	7	<i>Amenlaecher canadensis</i>	Serviceberry	50mm	W.B.
AR	3	<i>Acer rubrum</i>	Red Maple	60mm	W.B.
MP	5	<i>Malus purple gem</i>	Purple Gem Crabapple	50mm	W.B.
OR	2	<i>Quercus macrocarpa</i>	Burr Oak	60mm	W.B.



- KEY MAP, NTS**
- L-TP2 GENERAL NOTES**
- All general site information and conditions compiled from architects and engineer's plans and surveys.
 - Do not scale this drawing.
 - Report any discrepancies prior to commencing work. No responsibility is born by the Landscape Architect for unknown subsurface conditions.
 - Reinstatement all areas and items damaged as a result of construction activities to the satisfaction of the Landscape Architect.
 - Drawing may not be used for construction until signed by Landscape Architect as issued for construction.
 - The accuracy of the position of utilities is not guaranteed.
 - Individual utility co. must be contacted for confirmation of utility existence and location prior to digging.
 - This drawing is an instrument of service and requires the permission of the Landscape Architect for use. Copyright is reserved by the Landscape Architect, David M. Lashley.

1 POST DEVELOPMENT VEGETATION



- NOTES**
- THE FOLLOWING PROTECTION MEASURES MUST BE IMPLEMENTED FOR RETAINED TREES, BOTH WITHIN THE WORK AREA AND ON ADJACENT PARCELS.
- UNDER THE GUIDANCE OF AN ARBORIST, ERECT A MODULAR FENCE AT THE CRITICAL ROOT ZONE (CRZ) OF TREES WHERE THE CRZ IS ESTABLISHED AS BEING 10 CENTIMETERS FROM THE TRUNK FOR EVERY CENTIMETER OF TRUNK DIAMETER AT BREAST HEIGHT.
 - TREE PROTECTION SHALL BE ERECTED TO PROVIDE A CONTINUOUS BARRICADE BETWEEN DESIGNATED TREES AND THE WORK AREA PRIOR TO CONSTRUCTION.
 - TUNNEL OR BORE WHEN DIGGING WITHIN THE CRZ OF A TREE.
 - ENSURE ALL EQUIPMENT AND CONSTRUCTION RELATED MATERIAL ARE NOT PLACED OR TEMPORARILY STORED WITHIN THE CRZ.
 - ENSURE EXHAUST FUMES FROM ALL EQUIPMENT ARE NOT DIRECTED TOWARDS ANY TREE'S CANOPY.
 - FLOODING OR DEPOSITION OF SEDIMENT SHALL BE PREVENTED WHERE TREES ARE LOCATED.
 - ALL DISTURBED ROOT SYSTEMS SHALL BE EXPOSED AND BACKFILLED IN ONE CONTINUOUS OPERATION TO MINIMIZE DESICCATION.
 - EXPOSED ROOTS SHALL BE KEPT CONTINUOUSLY MOIST DURING EXCAVATION.
 - REMOVE BROKEN AND DAMAGED ROOTS WITH SHARP PRUNING SHEARS.
 - THE TREE PROTECTION MODULAR FENCE IS TEMPORARY, SHALL BE MAINTAINED AT ALL TIMES DURING CONSTRUCTION OPERATIONS, AND SHALL BE REMOVED UPON COMPLETION OF WORK UNLESS ADVISED TO DO THE CONTRARY BY AN ARBORIST.

2 TREE PROTECTION FENCING

NO.	DATE	DESCRIPTION
4	2022-05-17	ISSUED FOR SPA
3	2022-03-22	ISSUED FOR SITE PLAN
2	2021-11-25	ISSUED FOR SITE PLAN
1	2021-10-28	ISSUED FOR COORDINATION

SEAL: **NORTH:**

LASHLEY + ASSOCIATES
LANDSCAPE ARCHITECTURE AND SITE ENGINEERING

205 885 CLADSTONE AVENUE
OTTAWA, ON K1Y 4B6
T 613 233 4879
F 613 233 4887
W LashleyA.com
E M.Lashley@LashleyA.com

ROSSMANN ARCHITECTURE
Rossmann Architecture
88 boul. St. Joseph
Gatineau, QC, J6Y 3W5
P 613-600-1555

NOVATECH
Engineers, Planners & Landscape Architects
Suite 200, 240 Michael Cowpland Drive
Ottawa, Ontario, Canada K0M 1P6
Telephone (613) 254-9643
Facsimile (613) 254-5967
Website www.novatech-eng.com

PROJECT:

Hillside Commons Apartments Residential Development
3277 St. Joseph Blvd.
Orléans, Ottawa, ON K1C 1T1

DRAWING TITLE:

POST-DEVELOPMENT VEGETATION

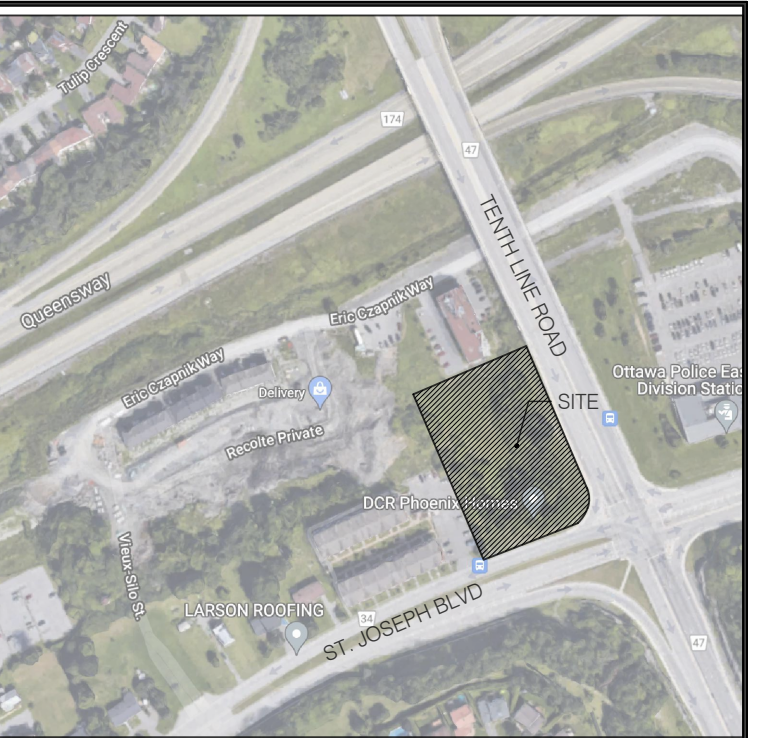
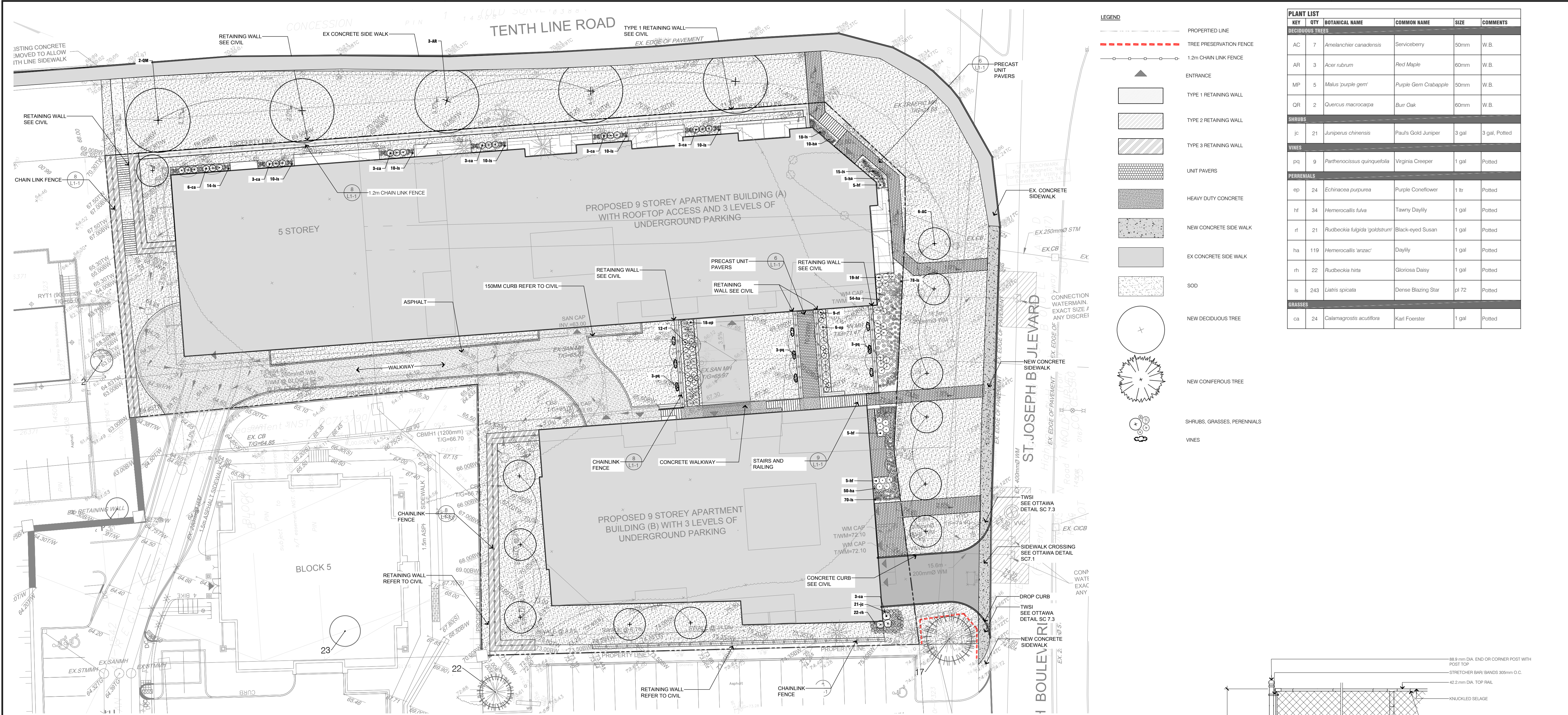
DATE: 2021-09-17 **DRAWING NO.:**

SCALE: AS SHOWN

DRAWN BY: NG-RP

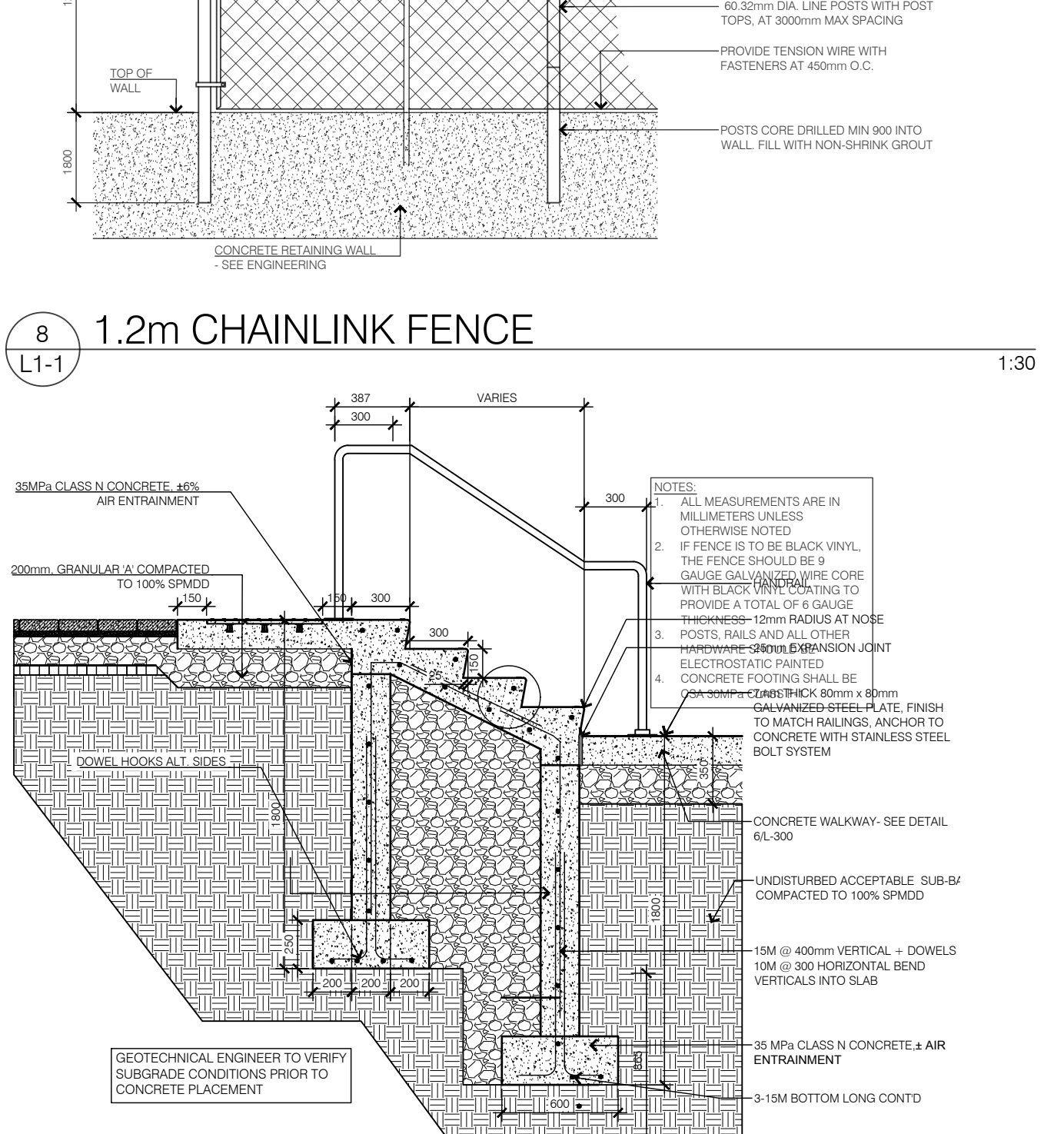
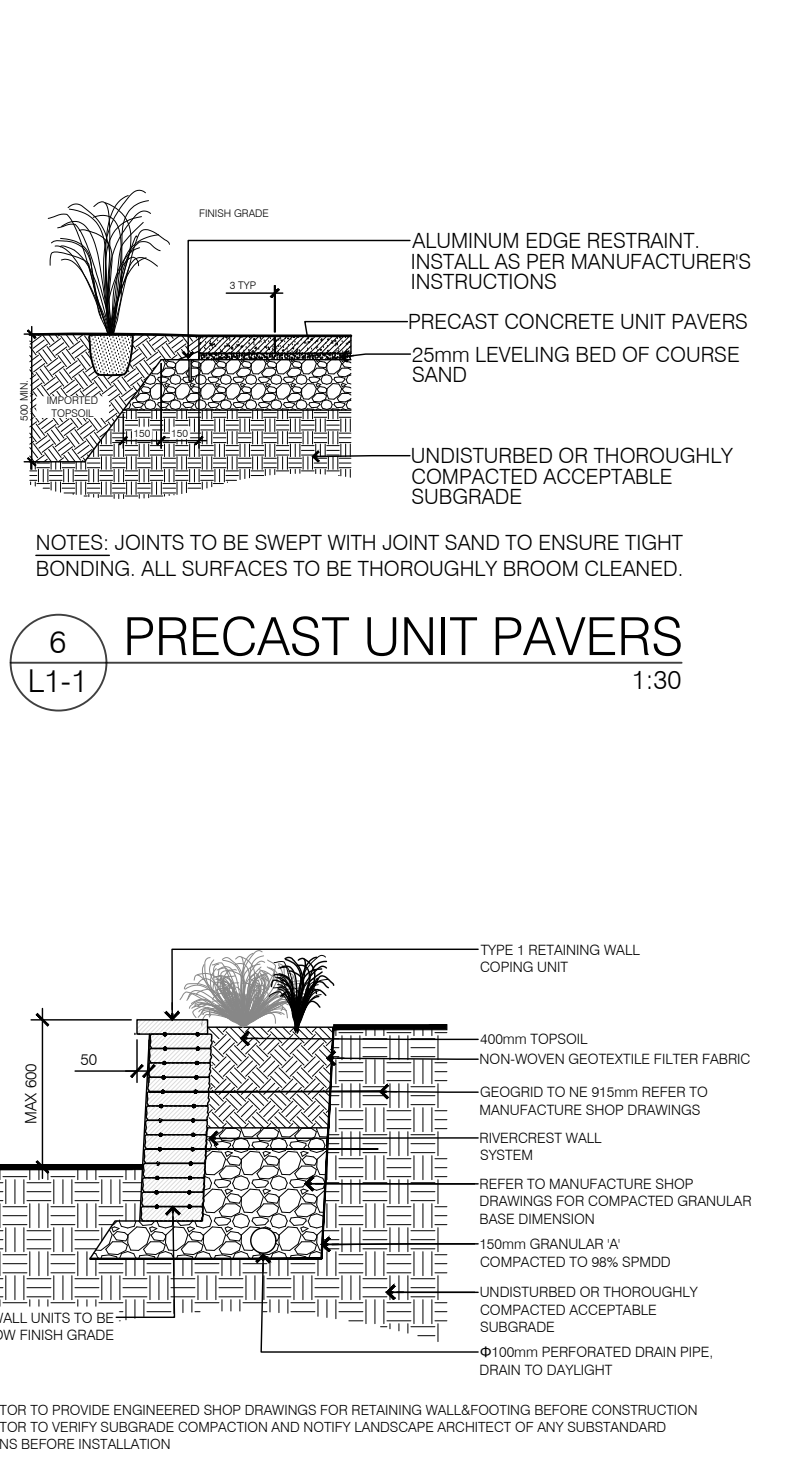
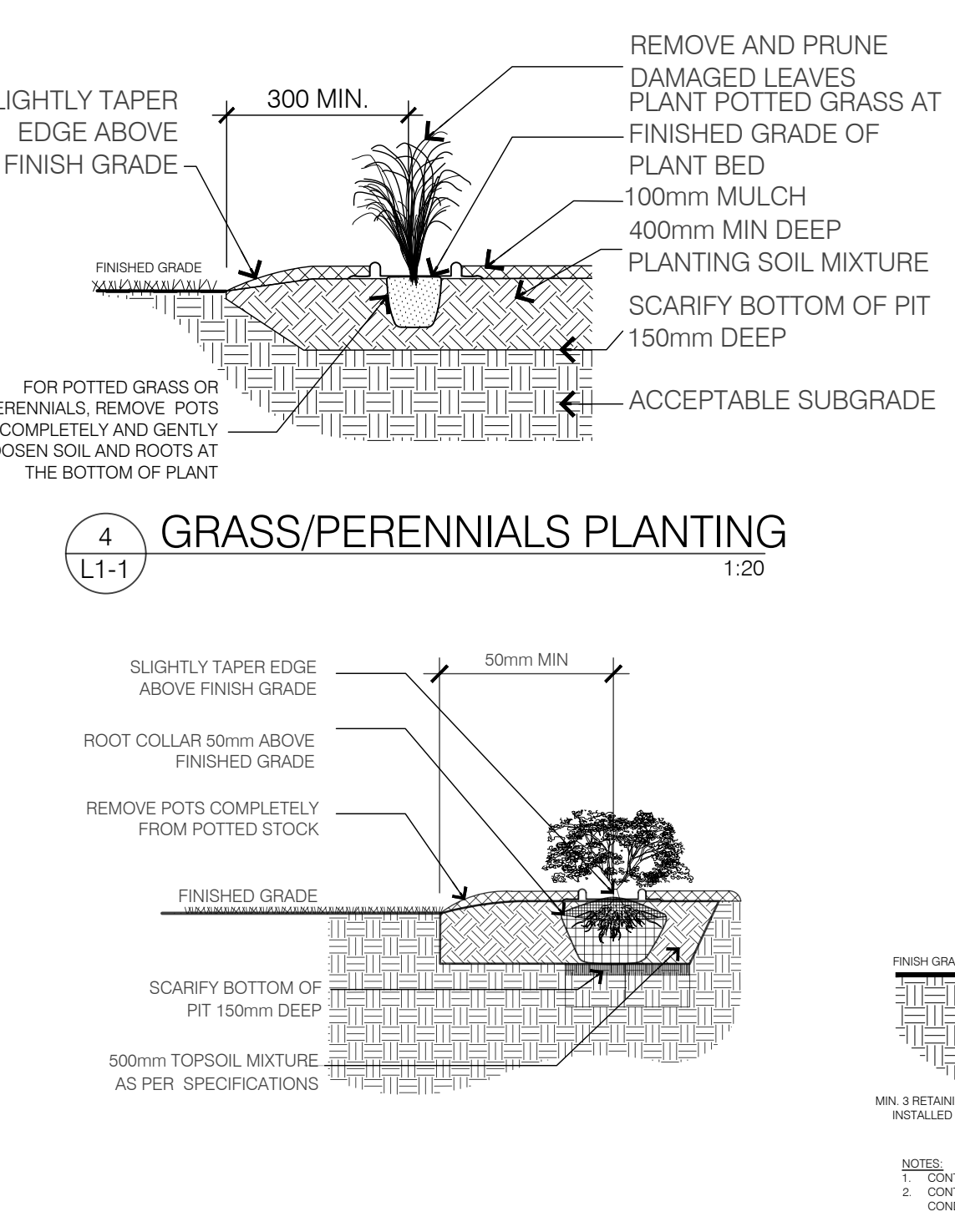
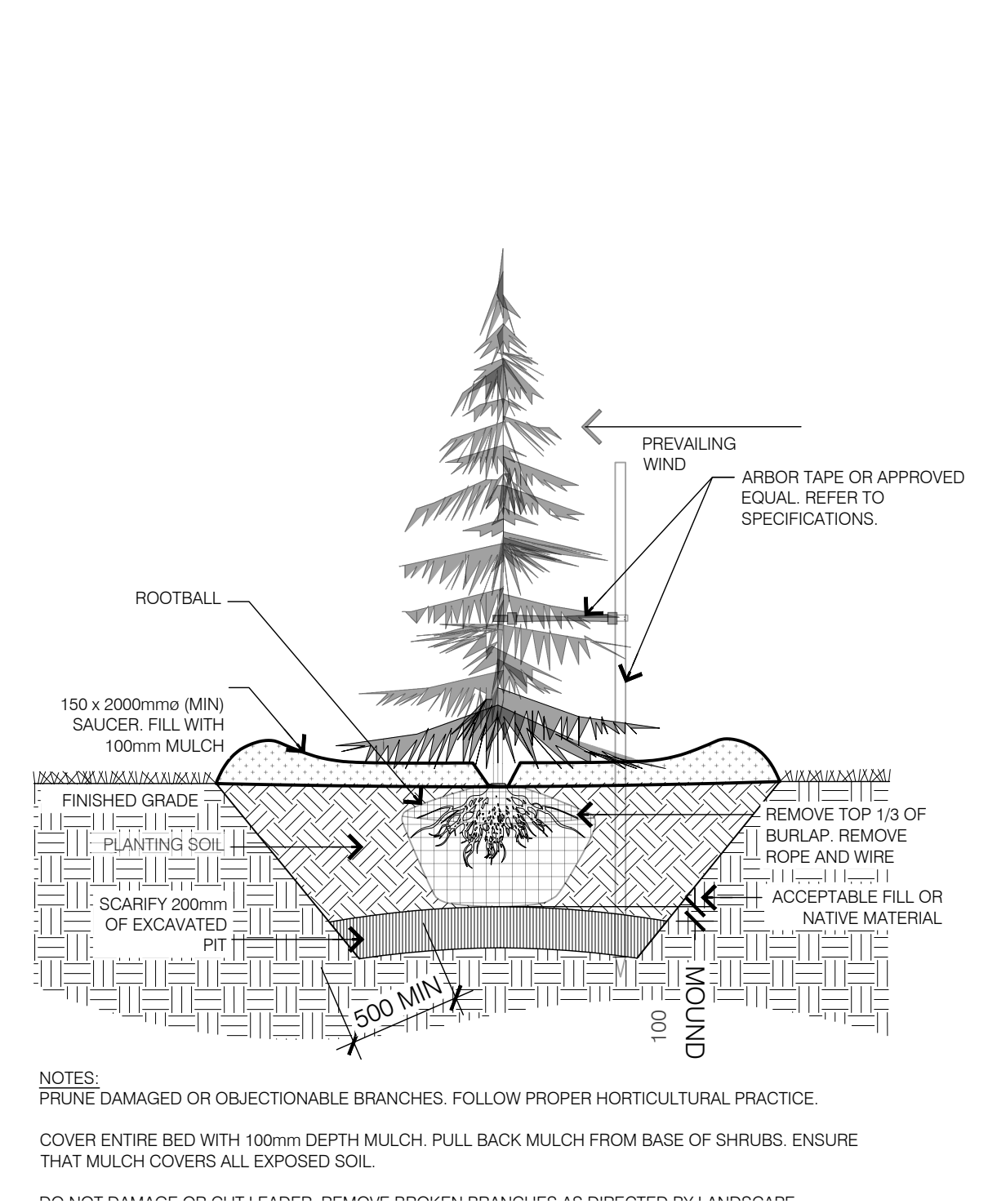
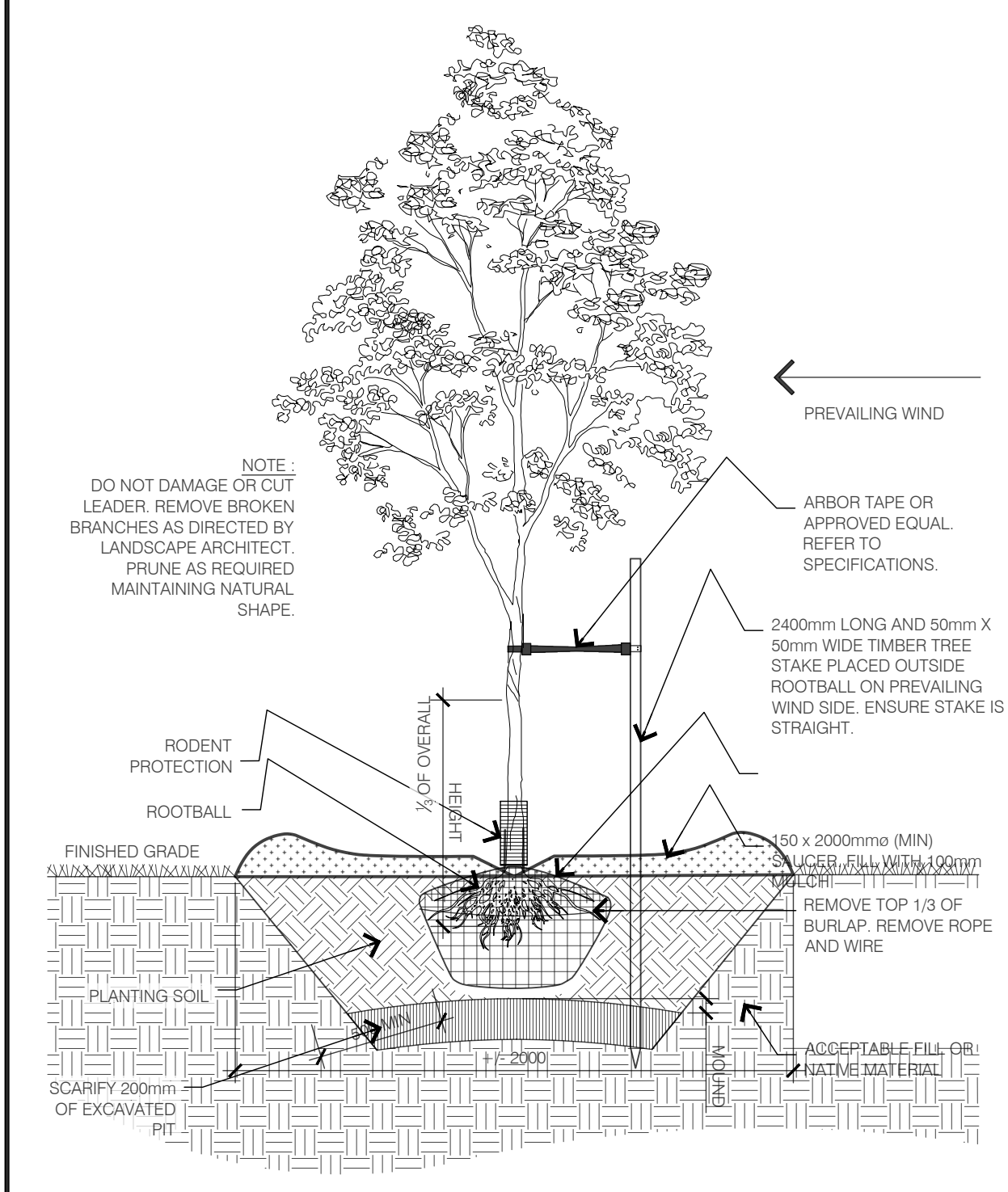
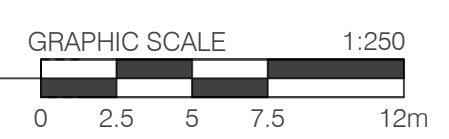
LA PROJECT NO.: 21823-1

L-TP2



- KEY MAP, NTS**
- L1-1 GENERAL NOTES**
- All general site information and conditions compiled from architects and engineer's plans and surveys.
 - Do not scale this drawing.
 - Report any discrepancies prior to commencing work. No responsibility is born by the Landscape Architect for unknown subsurface conditions.
 - Reinstatement all areas and items damaged as a result of construction activities to the satisfaction of the Landscape Architect.
 - Drawing may not be used for construction until signed by Landscape Architect as issued for construction.
 - The accuracy of the position of utilities is not guaranteed.
 - Individual utility co. must be contacted for confirmation of utility existence and location prior to digging.
 - This drawing is an instrument of service and requires the permission of the Landscape Architect for use. Copyright is reserved by the Landscape Architect, David M. Lashley.

1 LANDSCAPE PLAN
L1-1



NO.	DATE	DESCRIPTION
4	2022-05-17	REVISED FOR SPA
3	2022-03-22	ISSUED FOR SPA
2	2021-12-10	ISSUED FOR SPA
1	2021-11-24	ISSUED FOR REVIEW

SEAL: NORTH:

LASHLEY + ASSOCIATES
LANDSCAPE ARCHITECTURE AND SITE ENGINEERING

ROSSMANN ARCHITECTURE
Rossmann Architecture
88 boul. St. Joseph
Gatineau, QC J8Y 3W5
P: 819-600-1555

NOVATECH
Engineers, Planners & Landscape Architects
Suite 200, 240 Michael Colepland Drive
Ottawa, Ontario, Canada K2M 1P6
Telephone: (613) 254-9643
Facsimile: (613) 254-5667
Website: www.novatech-eng.com

PROJECT:
Hillside Commons
Apartments Residential Development
3277 St. Joseph Blvd.
Orléans, Ottawa, ON K1C 1T1

DRAWING TITLE:
LANDSCAPE PLAN

DATE: 2021-09-17 **DRAWING NO.:**
SCALE: AS SHOWN
DRAWN BY: NG-RP
LA PROJECT NO.: 21823-1

L1-1