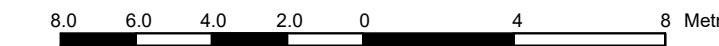


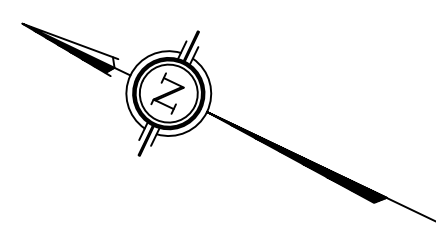
PART OF LOT 35  
CONCESSION 1 (OLD SURVEY)  
GEOGRAPHIC TOWNSHIP OF  
CUMBERLAND  
AND  
PART OF BLOCK 2  
REGISTERED PLAN 4M-1542  
CITY OF OTTAWA

Prepared by Annis, O'Sullivan, Vollebek Ltd.

Scale 1 : 200

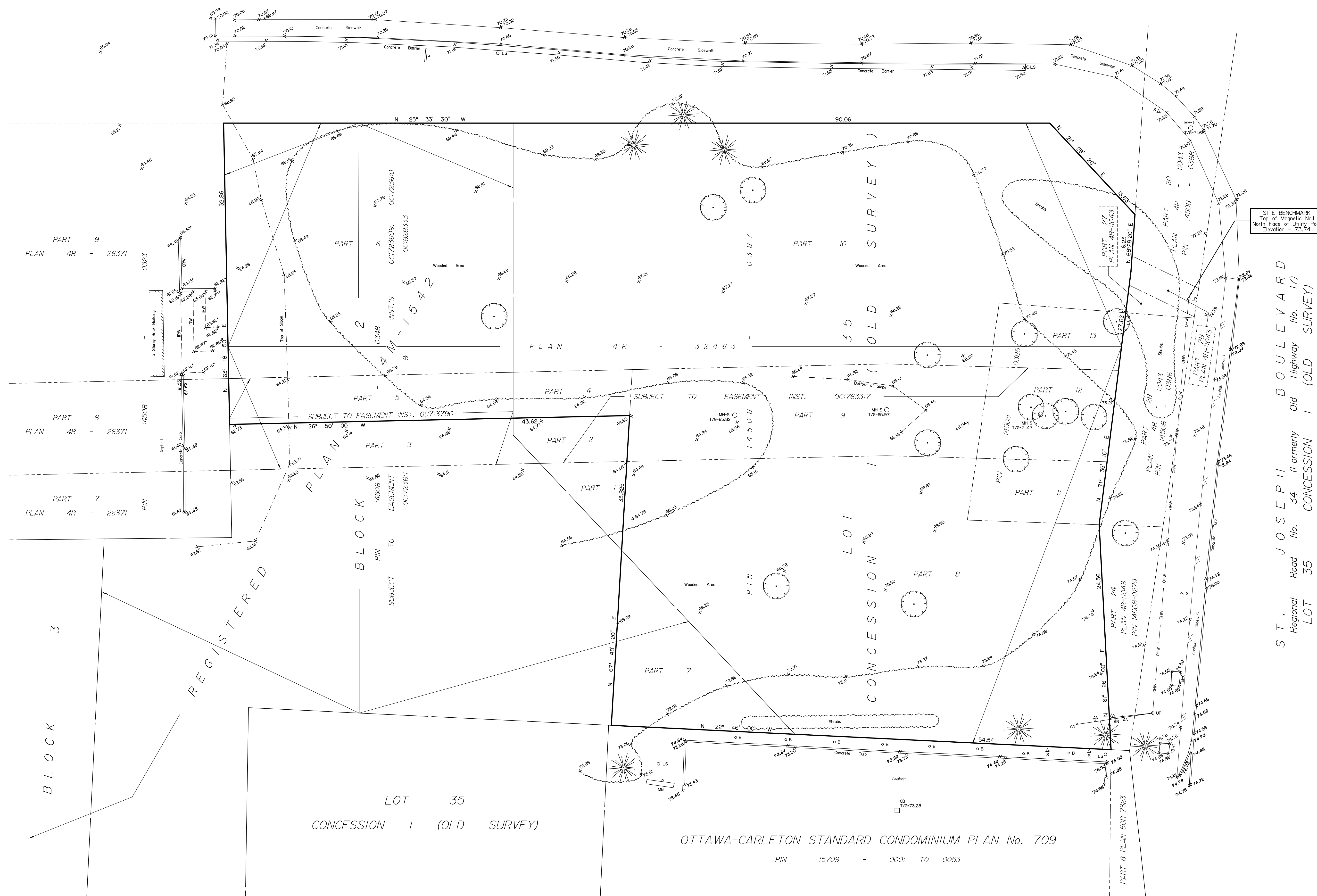


Metric  
DISTANCES SHOWN ON THIS PLAN ARE IN METRES AND  
CAN BE CONVERTED TO FEET BY DIVIDING BY 0.3048



TRAVELLED ROAD KNOWN AS TENTH LINE ROAD

PART 16 PLAN 4R - 11043  
P I N 1 4 5 0 8 - 0 3 8 8



SITE BENCHMARK  
Top of Magnetic Nail  
North Face of Utility Pole  
Elevation = 73.74

S T . J O S E P H B O U L E V A R D  
Regional Road No. 34 (Formerly Old Highway No. 17)  
LOT 35 CONCESSION 1 (OLD SURVEY)

Notes & Legend

Denotes	
	Deciduous Tree
	Coniferous Tree
	Underground Sanitary Sewer
	Underground Cable
	Overhead Wires
	Anchor
	Utility Pole
	Light Standard
	Catch Basin
	Maintenance Hole (Sanitary)
	Maintenance Hole (Traffic)
	Ballard
	Sign
	Mail Box
	Location of Elevations
	Top of Concrete Curb Elevation
	Top of Wall Elevation
	Interlock Retaining Wall
	Concrete Retaining Wall
	Cable Terminal Box

BOUNDARY INFORMATION COMPILED FROM PLAN 4R-32463.

ELEVATION NOTES

- Elevations shown are geodetic and are referred to the CGVD28 geodetic datum.
- It is the responsibility of the user of this information to verify that the job benchmark has not been altered or disturbed and that its relative elevation and description agrees with the information shown on this drawing.

UTILITY NOTES

- This drawing cannot be accepted as acknowledging all of the utilities and it will be the responsibility of the user to contact the respective utility authorities for confirmation.
- Only visible surface utilities were located.
- A field location of underground plant by the pertinent utility authority is mandatory before any work involving breaking ground, probing, excavating etc.