

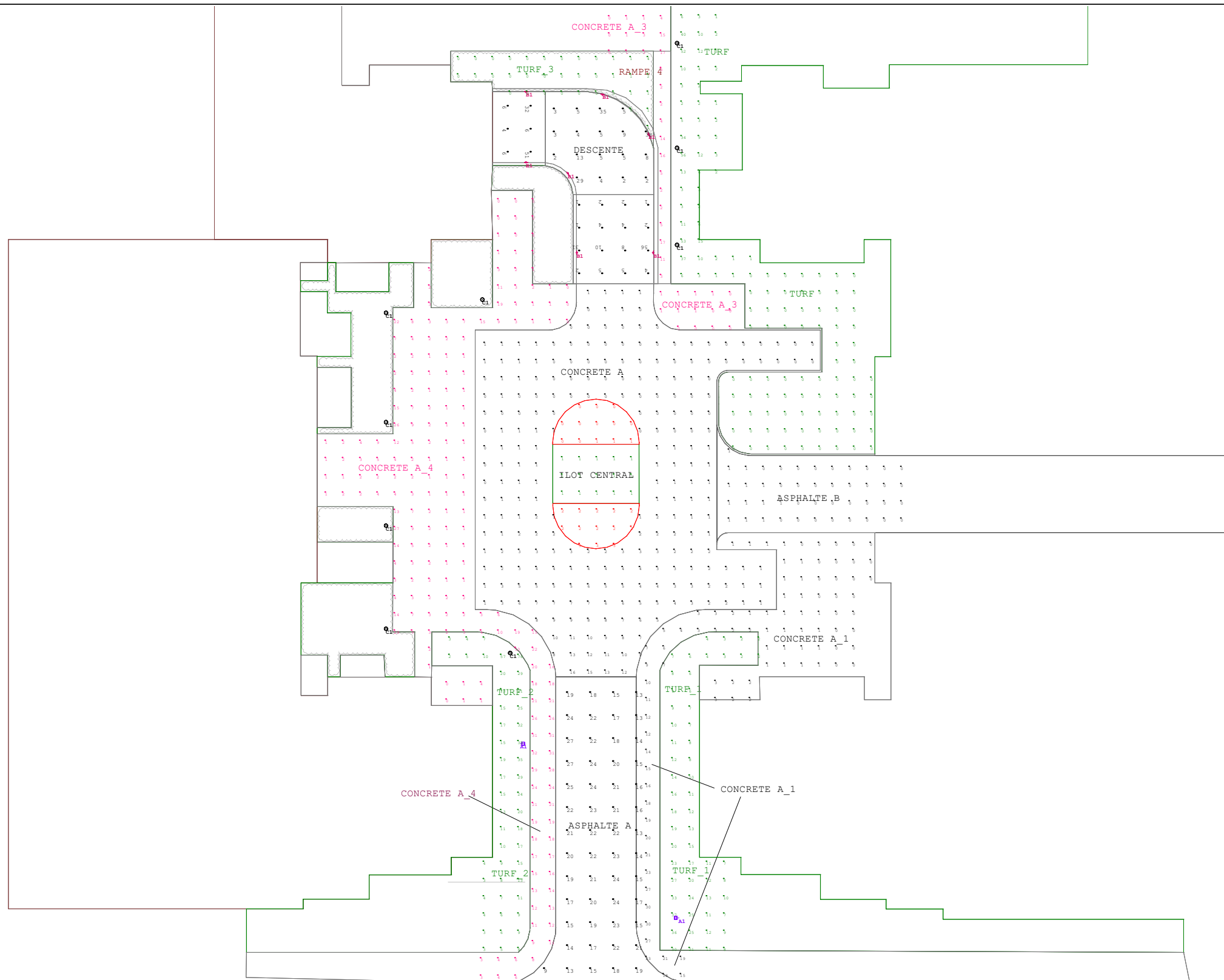


# Photometric study (Lighting levels)

**Projet : 1509 MERIVALE ROAD, OTTAWA, ON.**

Par: JEAN-PHILIPPE PERRON (514) 231-3685 - [jpperron@edpinc.ca](mailto:jpperron@edpinc.ca)

Date:2022-01-17



Note: The results presented above are only valid only for the information provided. Any change of dimensions, colors, textures or other could affect the results.

# Projet : 1509 MERIVALE ROAD, OTTAWA, ON.

Par: JEAN-PHILIPPE PERRON (514) 231-3685 - jpperron@edpinc.ca

Date: 2022-01-17

Luminaire Schedule						
Symbol	Qty	Label	Arrangement	Description	Lumens	Mounting Height
☐	2	A1	SINGLE	DSX1 LED P2 30K T4M MVOLT SPA DBLXD	8082	
↑	7	B1	SINGLE	BEGA - 33154-K3-BLK + BB24060	514	
⊙	9	C1	SINGLE	CL813-L4L10	1027	

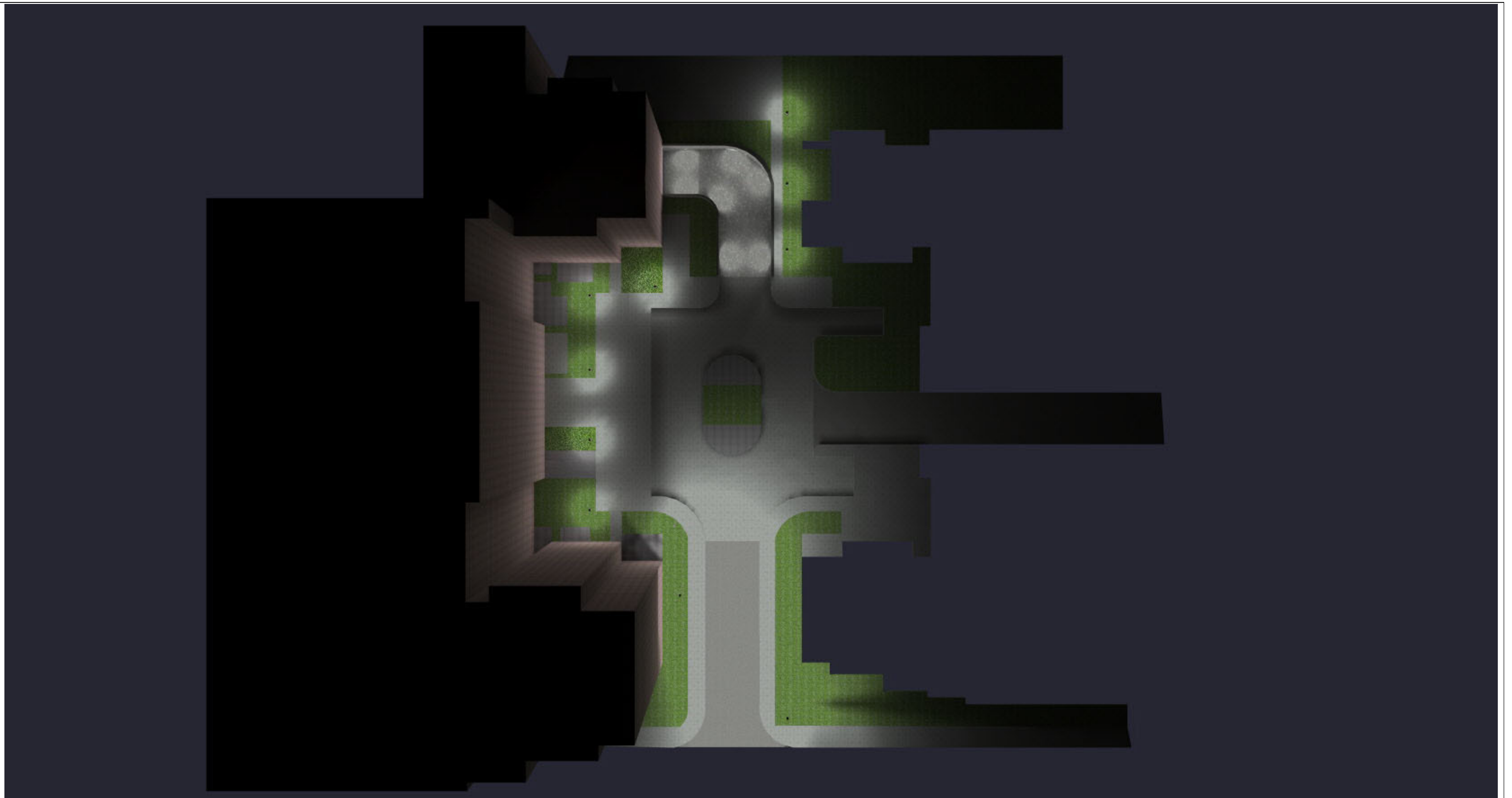
Calculation Summary							
Label	CalcType	Units	Avg	Max	Min	Max/Min	Grid Z
ASPHALTE A ASPHALTE A	Illuminance	Lux	19.06	27	9	3.00	0
ASPHALTE B ASPHALTE B	Illuminance	Lux	0.29	1	0	N.A.	0
CONCRETE A_1_Top	Illuminance	Lux	5.47	30	0	N.A.	0.2
CONCRETE A_3_Top	Illuminance	Lux	3.62	17	0	N.A.	0.2
CONCRETE A_4_Top	Illuminance	Lux	6.67	33	0	N.A.	0.2
CONCRETE A CONCRETE A	Illuminance	Lux	2.16	16	0	N.A.	0
ILOT CENTRAL_1_Top	Illuminance	Lux	0.23	1	0	N.A.	0.2
ILOT CENTRAL_2_Top	Illuminance	Lux	1.00	1	1	1.00	0.2
ILOT CENTRAL_Top	Illuminance	Lux	2.23	3	2	1.50	0.2
RAMPE 1	Illuminance	Lux	8.63	56	1	56.00	-0.824
RAMPE 2	Illuminance	Lux	9.83	38	2	19.00	-0.933
RAMPE 3	Illuminance	Lux	17.50	51	4	12.75	-1.337
TURF_1_Top	Illuminance	Lux	12.88	37	2	18.50	0.2
TURF_2_Top	Illuminance	Lux	15.44	76	2	38.00	0.2
TURF_3_Top	Illuminance	Lux	0.39	4	0	N.A.	0.2
TURF_Top	Illuminance	Lux	3.74	56	0	N.A.	0.2

Note: The results presented above are only valid as per the provided information. Any change of dimensions, colors, textures or other could affect the results.

**Projet : 1509 MERIVALE ROAD, OTTAWA, ON.**

Par: JEAN-PHILIPPE PERRON (514) 231-3685 - jpperron@edpinc.ca

Date:2022-01-17

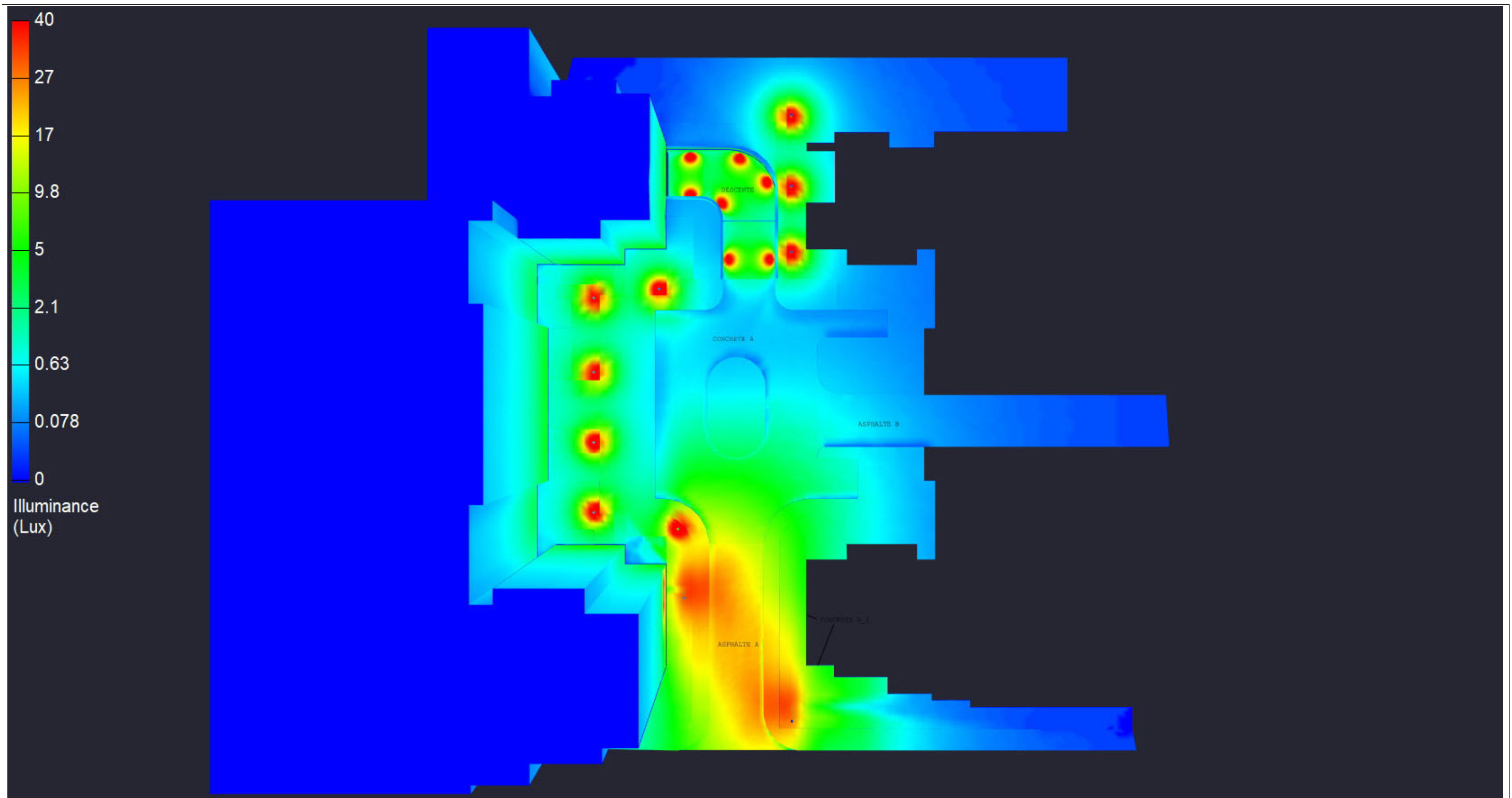


Note: The results presented above are only valid as per the provided information. Any change of dimensions, colors, textures or other could affect the results.

**Projet : 1509 MERIVALE ROAD, OTTAWA, ON.**

Par: JEAN-PHILIPPE PERRON (514) 231-3685 - [jpperron@edpinc.ca](mailto:jpperron@edpinc.ca)

Date:2022-01-17

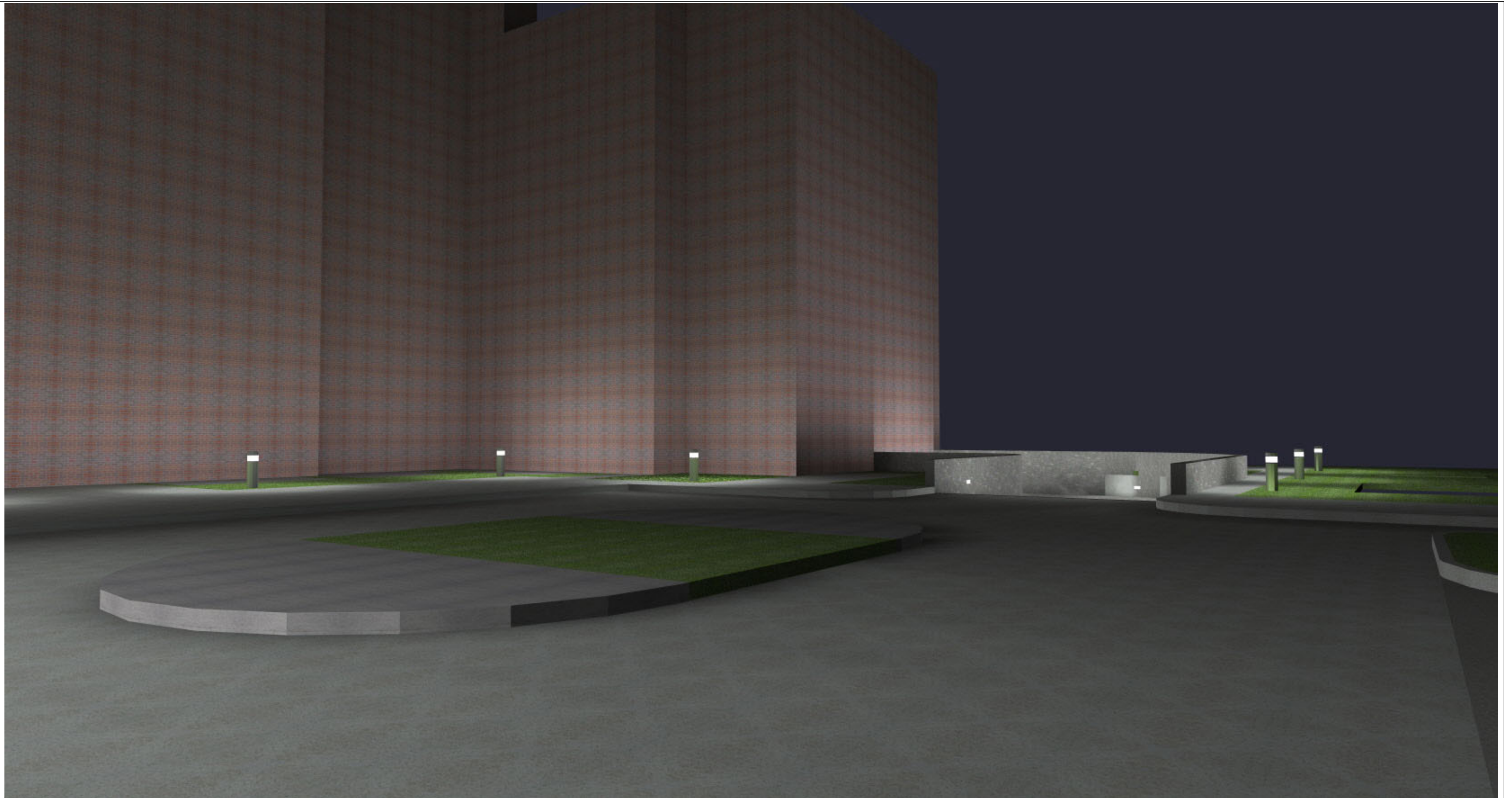


Note: The results presented above are only valid as per the provided information. Any change of dimensions, colors, textures or other could affect the results.

## Projet : 1509 MERIVALE ROAD, OTTAWA, ON.

Par: JEAN-PHILIPPE PERRON (514) 231-3685 - jpperron@edpinc.ca

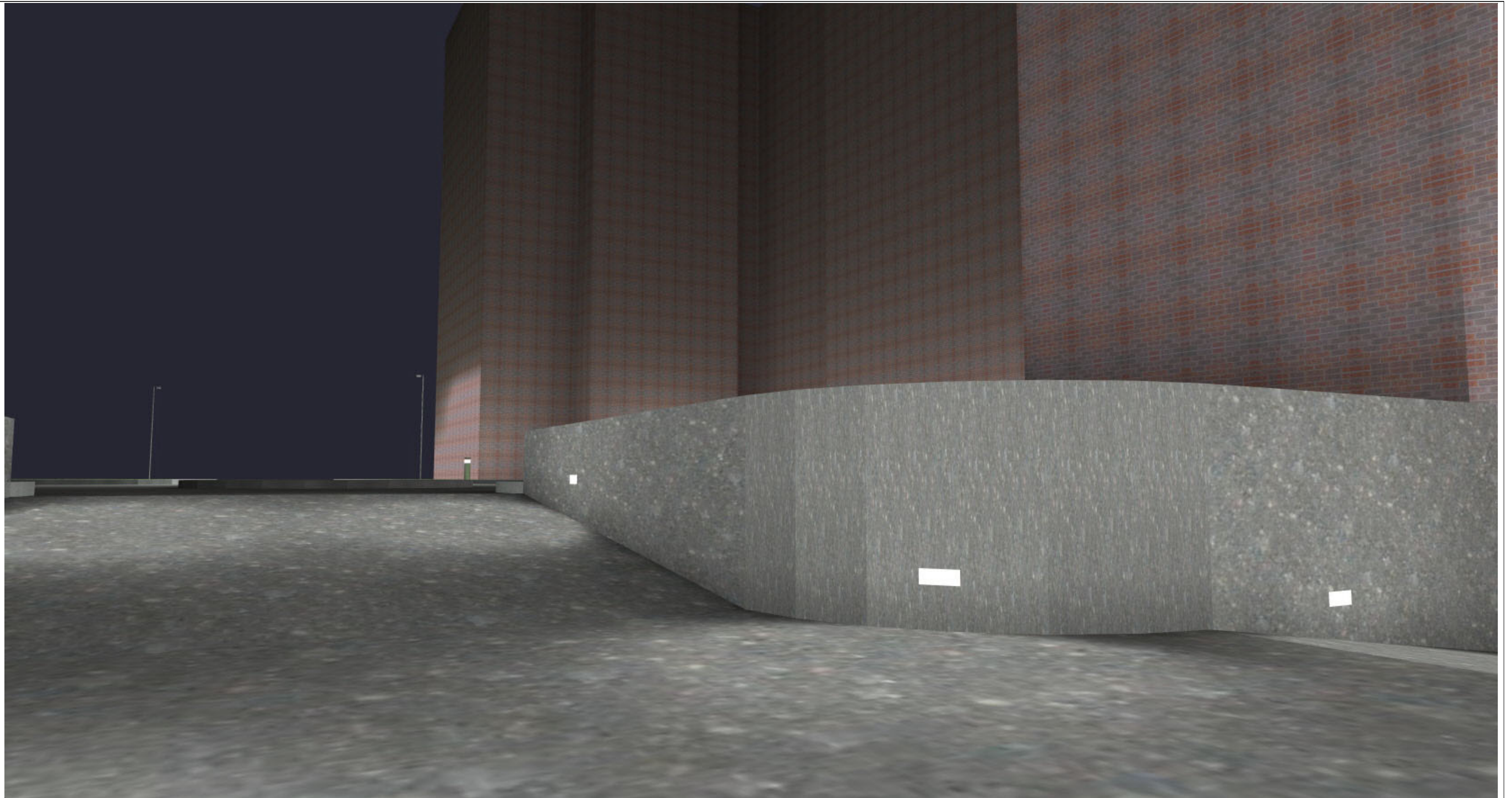
Date:2022-01-17



Note: The results presented above are only valid as per the provided information. Any change of dimensions, colors, textures or other could affect the results.

## Projet : 1509 MERIVALE ROAD, OTTAWA, ON.

Par: JEAN-PHILIPPE PERRON (514) 231-3685 - [jpperron@edpinc.ca](mailto:jpperron@edpinc.ca)  
Date:2022-01-17



Note: The results presented above are only valid as per the provided information. Any change of dimensions, colors, textures or other could affect the results.

## Projet : 1509 MERIVALE ROAD, OTTAWA, ON.

Par: JEAN-PHILIPPE PERRON (514) 231-3685 - [jpperron@edpinc.ca](mailto:jpperron@edpinc.ca)  
Date:2022-01-17