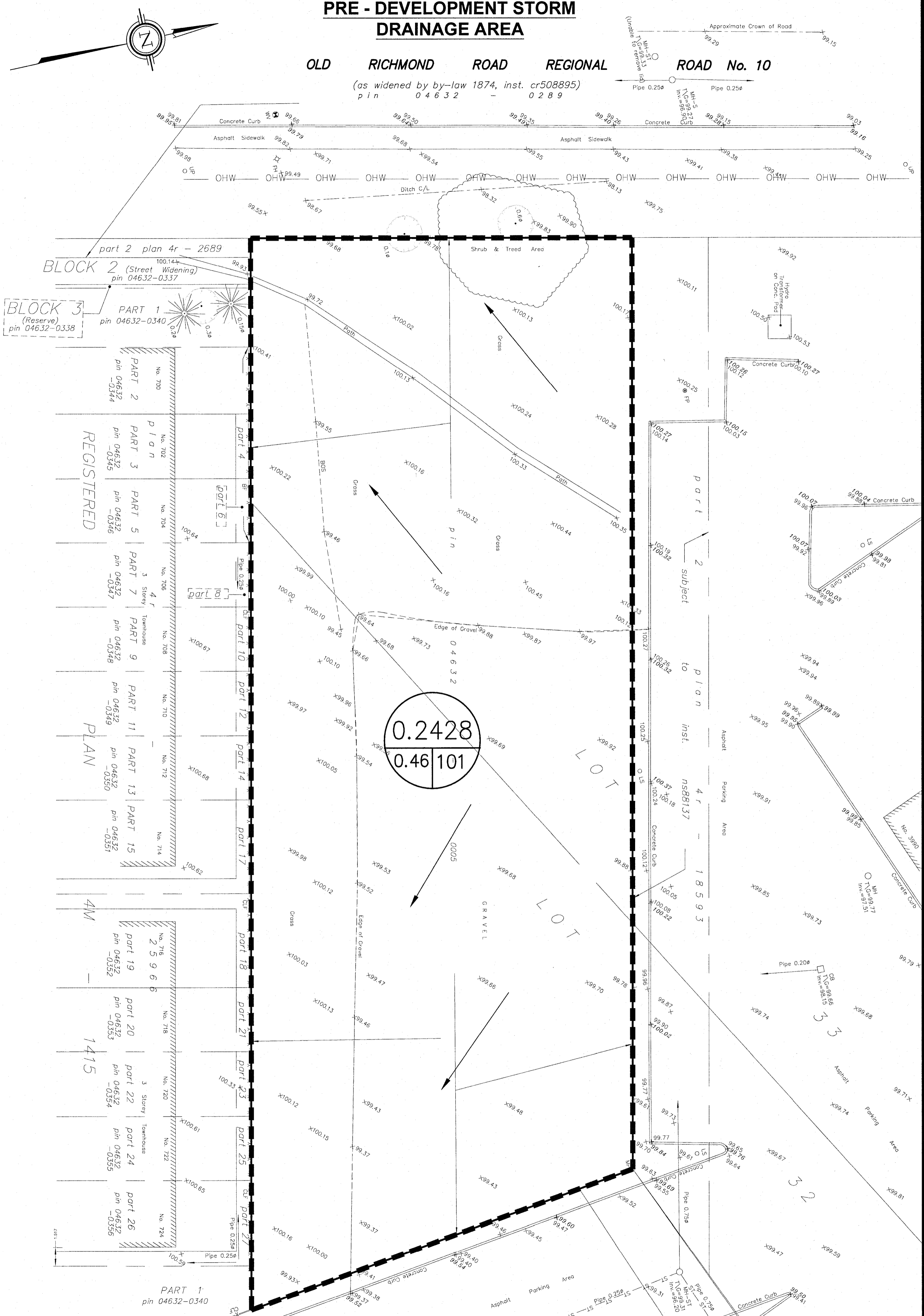


PRE - DEVELOPMENT STORM DRAINAGE AREA

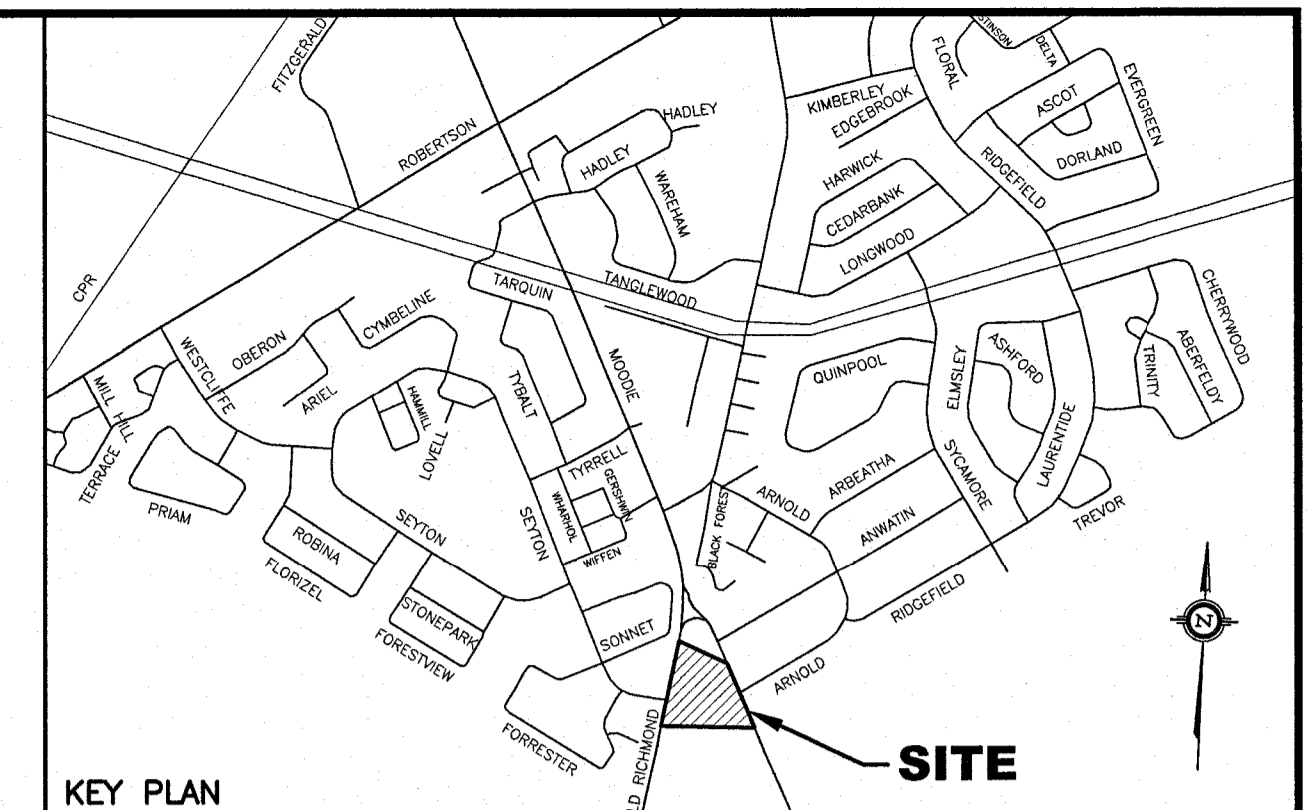
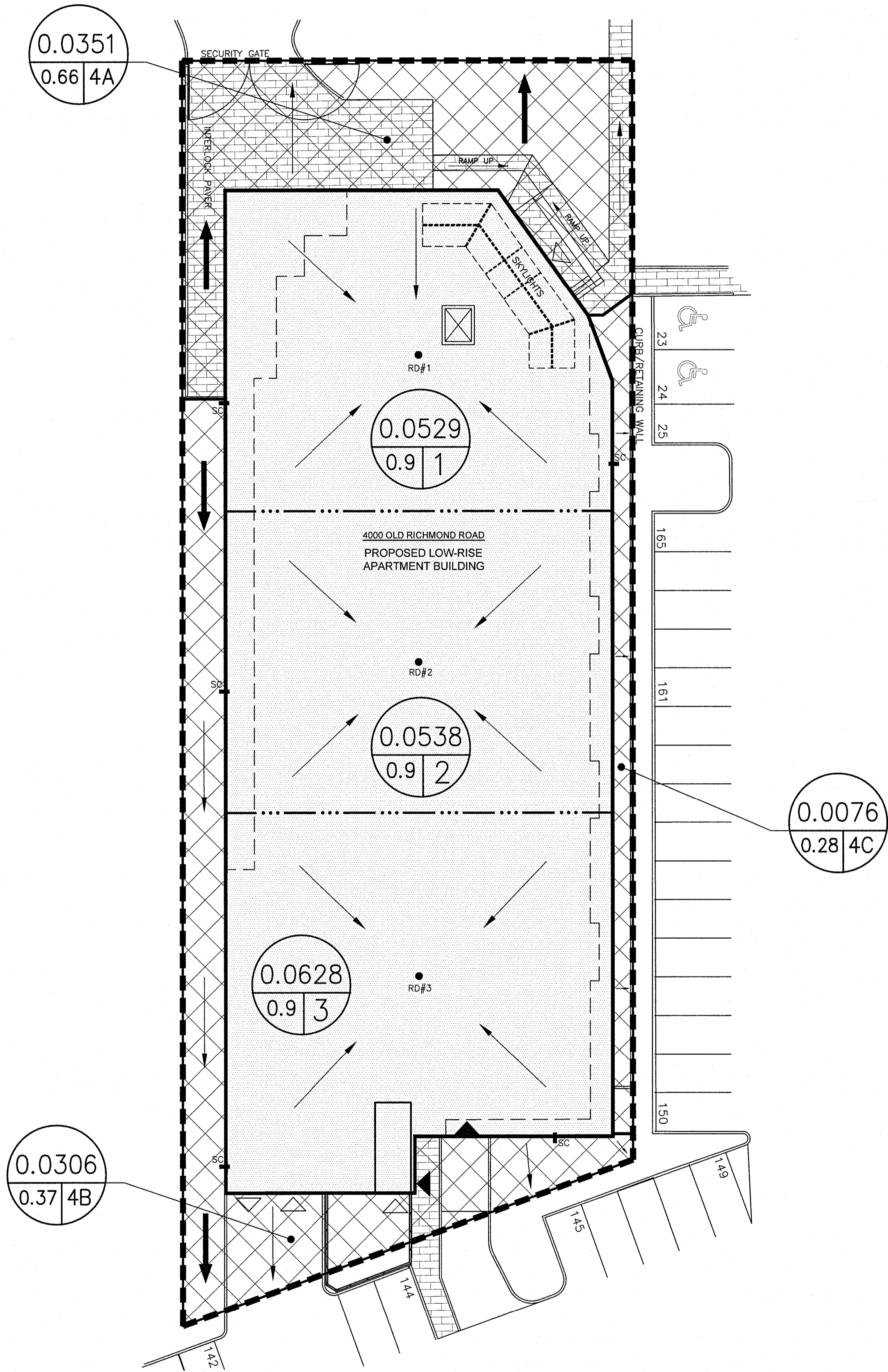
OLD RICHMOND ROAD REGIONAL ROAD No. 10

(as widened by by-law 1874, inst. cr508895)
p i n 0 4 6 3 2 - 0 2 8 9



POST DEVELOPMENT STORM DRAINAGE AREA

OLD RICHMOND ROAD



- LEGEND**
- RD#1 PROPOSED ROOF DRAIN NUMBER AND LOCATION
 - PROPOSED HIGH RIDGE LINE
 - PROPOSED OVERLAND FLOW ROUTE
 - LIMIT OF STORM DRAINAGE AREA
 - 0.002 0.9 2 DRAINAGE AREA IN HECTARES
 - 0.9 2 DRAINAGE NODE NUMBER
 - COEFFICIENT OF RUNOFF
 - CONTROLLED DRAINAGE AREA
 - UN-CONTROLLED DRAINAGE AREA
 - DENOTES GENERAL FLOW DIRECTION

- NOTE:**
- NODE #1, #2 AND #3 REPRESENTS BUILDING ROOF AREA
 - NODE #4 REPRESENTS UNCONTROLLED DRAINAGE AREA
 - NODE #101 REPRESENTS PRE-DEVELOPMENT DATA.

No.	REVISION	DATE	BY
2	REVISIONS AS PER ARCHITECT'S REVISED SITE PLAN OF NOV. 12, 2024 AND CITY'S REVIEW COMMENTS OF MAY 20, 2022	12/31/24	TLM
1	ISSUED FOR SITE PLAN APPLICATION	12/14/21	TLM

Professional Engineer's Stamp: TONY L. MAK, P. ENG., PROVINCE OF ONTARIO.

SCALE: 1:200 HORIZONTAL

DESIGN: T.L.M.
CHECKED: T.L.M.
DRAWN BY: P.M.
CHECKED: T.L.M.
APPROVED: T.L.M.

PROJECT: 4000 OLD RICHMOND ROAD PART OF LOTS 32 AND 33 CONCESSION 5 (RIDEAU FRONT) GEOGRAPHIC TOWNSHIP OF NEPEAN CITY OF OTTAWA

DRAWING TITLE: STORM DRAINAGE AREA PLAN

T.L. MAK ENGINEERING CONSULTANTS LTD. CONSULTING ENGINEERS

PROJECT No. 819-106 DATE JULY 2021 DRAWING No. D-1

D07-12-21-0234