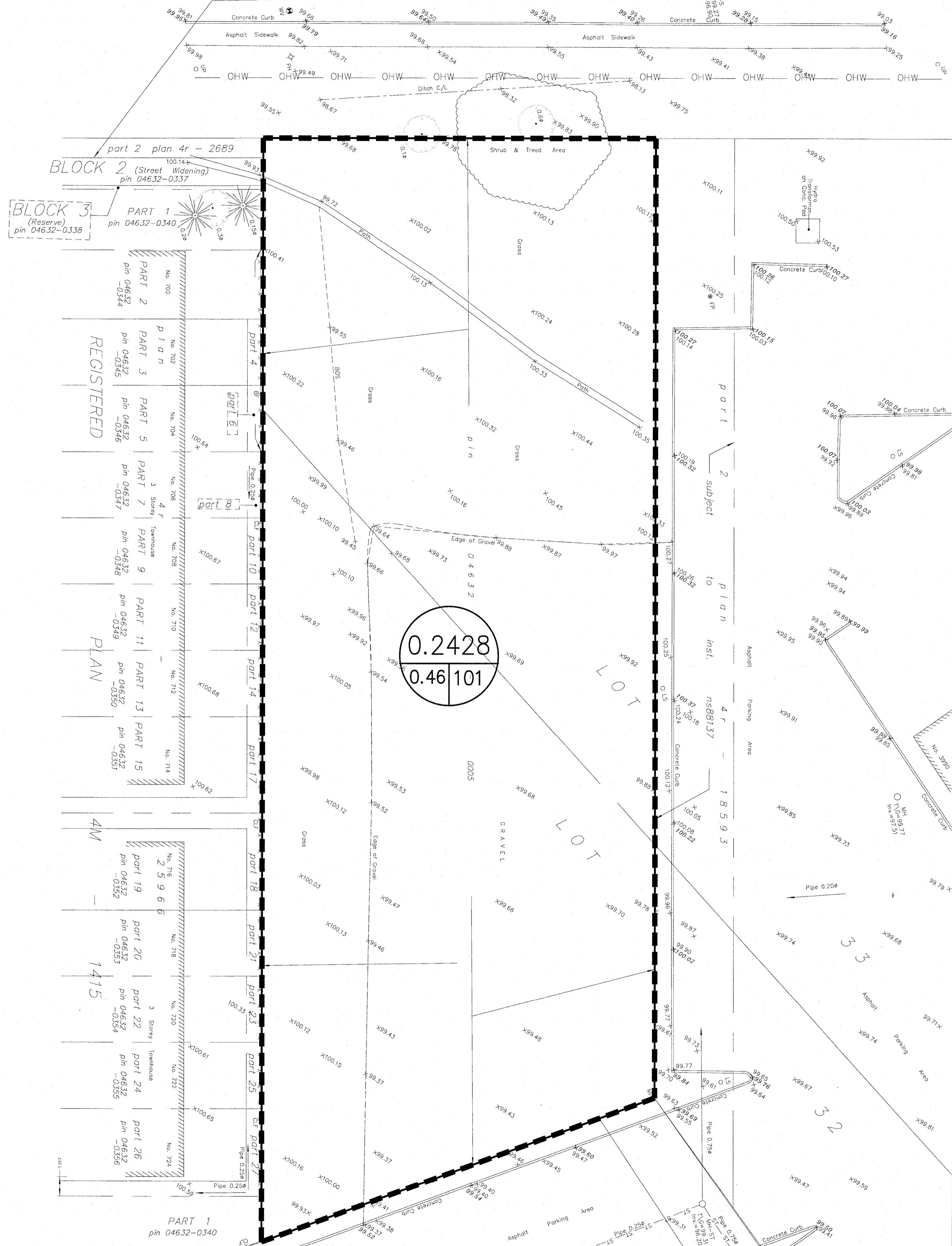


**PRE - DEVELOPMENT STORM DRAINAGE AREA**

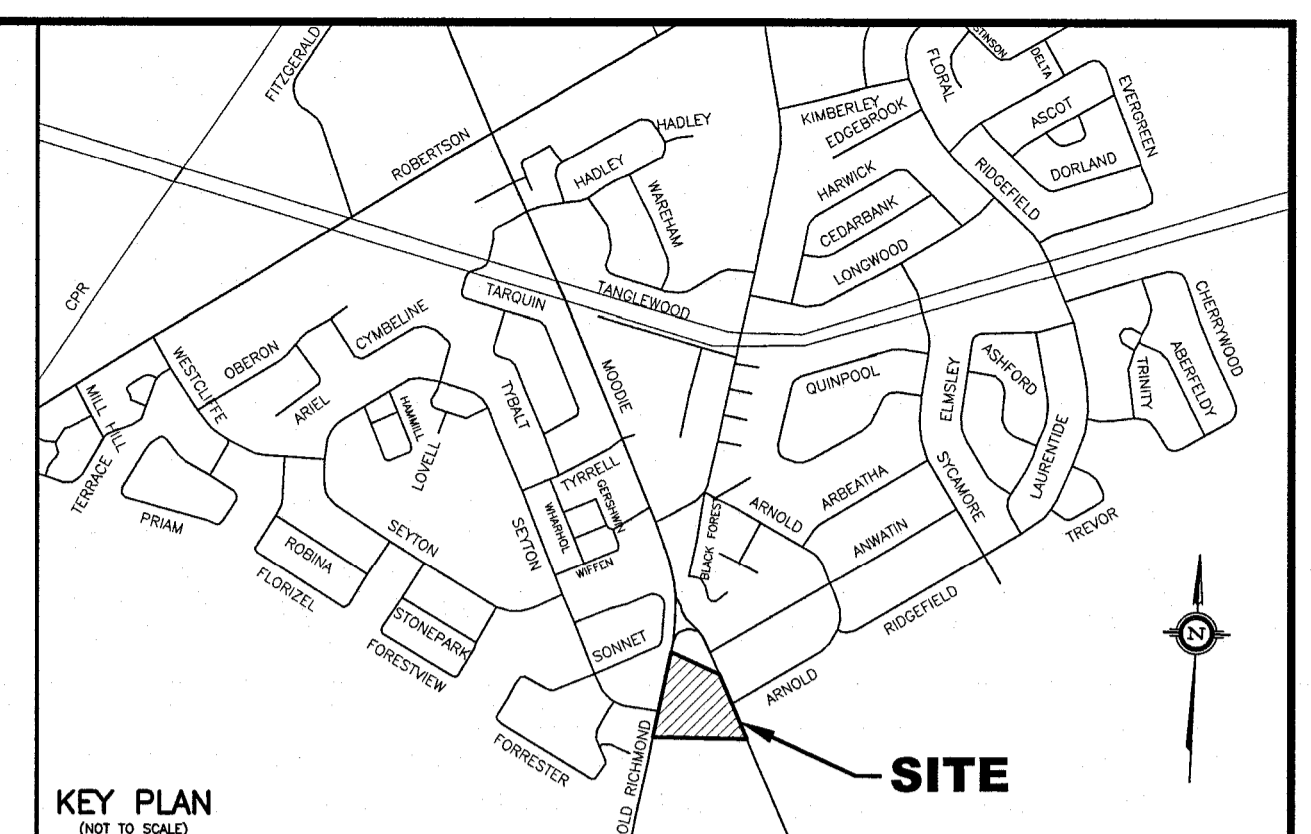
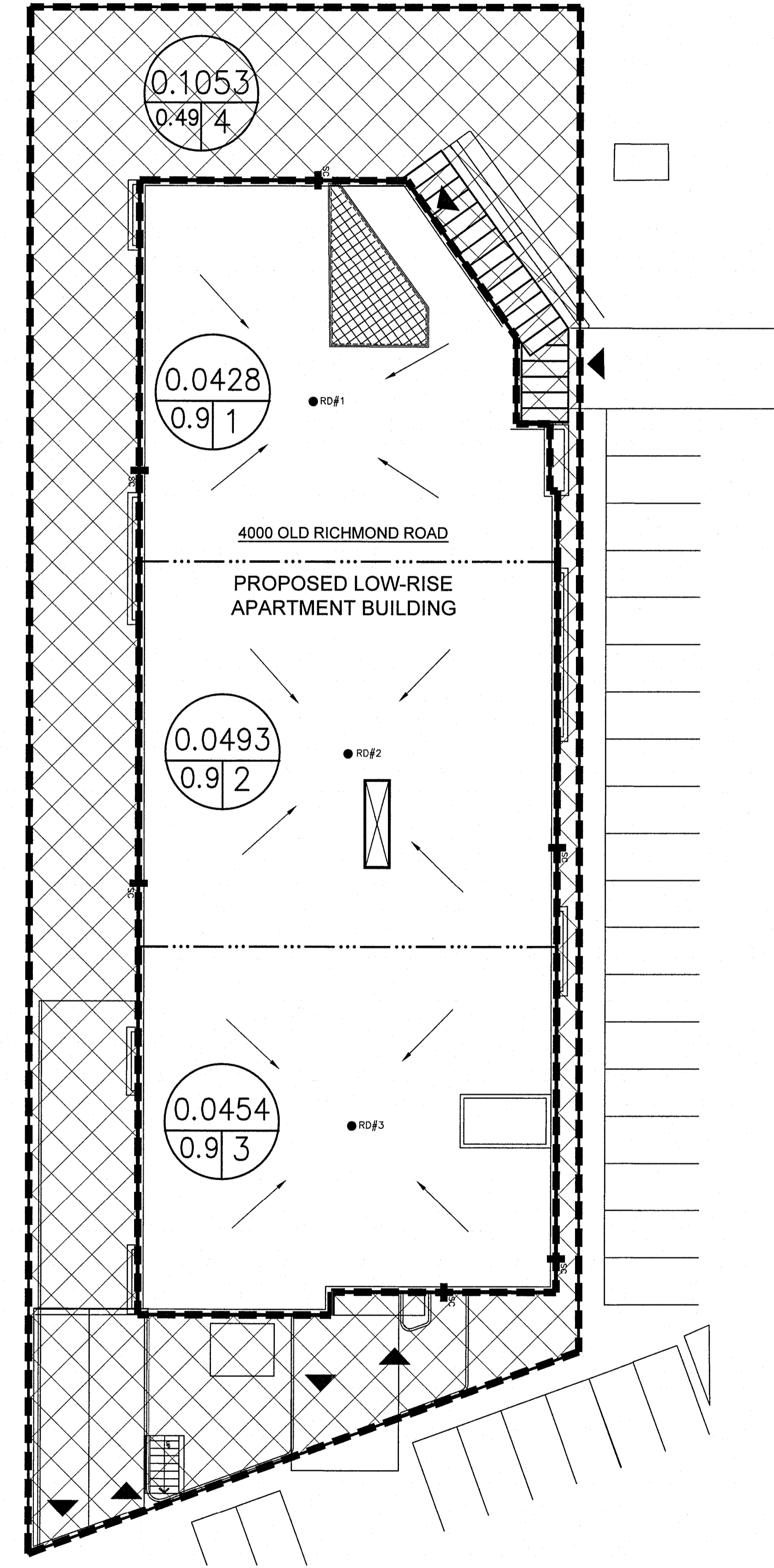
**OLD RICHMOND ROAD REGIONAL ROAD No. 10**

(as widened by by-law 1874, inst. cr508895)  
p i n 0 4 6 3 2 - 0 2 8 9



**POST DEVELOPMENT STORM DRAINAGE AREA**

**OLD RICHMOND ROAD**

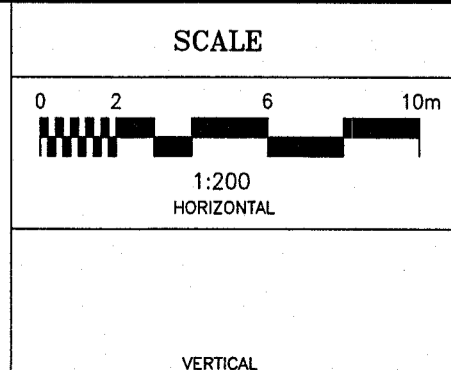
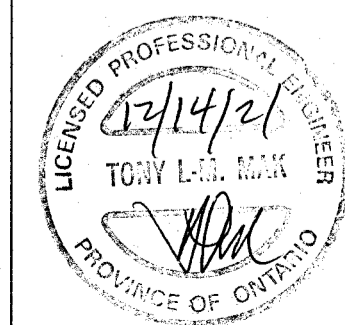


- LEGEND**
- RD#1 PROPOSED ROOF DRAIN NUMBER AND LOCATION
  - PROPOSED HIGH RIDGE LINE
  - - - - DEVELOPMENT LOT LIMITS
  - LIMIT OF STORM DRAINAGE AREA
  - 0.002 / 0.9 2 DRAINAGE AREA IN HECTARES / DRAINAGE NODE NUMBER
  - COEFFICIENT OF RUNOFF
  - ▨ CONTROLLED DRAINAGE AREA
  - ▩ UN-CONTROLLED DRAINAGE AREA

**NOTE:**

- NODE #1, #2 AND #3 REPRESENTS BUILDING ROOF AREA
- NODE #4 REPRESENTS UNCONTROLLED DRAINAGE AREA
- NODE #101 REPRESENTS PRE-DEVELOPMENT DATA.

1	ISSUED FOR SITE PLAN APPLICATION	12/14/21	TLM
NO.	REVISION	DATE	BY



DESIGN	T.L.M.
CHECKED	T.L.M.
DRAWN BY	P.M.
CHECKED	T.L.M.
APPROVED	T.L.M.

**PROJECT**

4000 OLD RICHMOND ROAD  
PART OF LOTS 32 AND 33  
CONCESSION 5 (RIDEAU FRONT)  
GEOGRAPHIC TOWNSHIP OF NEPEAN  
CITY OF OTTAWA

**DRAWING TITLE**

STORM DRAINAGE AREA PLAN

<b>T.L. MAK ENGINEERING CONSULTANTS LTD.</b> CONSULTING ENGINEERS		
<b>PROJECT No.</b>	<b>DATE</b>	<b>DRAWING No.</b>
819-106	JULY 2021	D-1