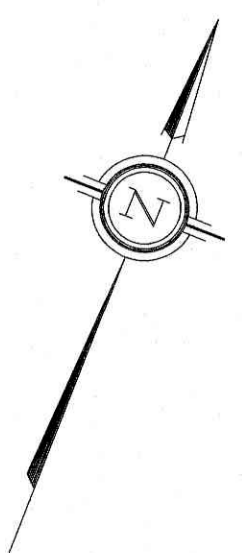


PART OF LOT 14
CONCESSION 1 (OTTAWA FRONT)
GEOGRAPHIC TOWNSHIP OF GLOUCESTER
CITY OF OTTAWA



PART 5 PLAN 5R-7571

PART 1 PLAN 5R-12726

PART 1

PLAN 5R-4378

PART 3

PLAN 4R-15255

PART 2 PLAN 4R-14919

PART 2

PLAN 0989 4R-15255

PART 4 PLAN 4R-14919

Scale 1:200
0 10 20 30 40 50 60 70 80 90 100 Metres

Metric
DISTANCES SHOWN ON THIS PLAN ARE IN METRES AND
CAN BE CONVERTED TO FEET BY DIVIDING BY 0.3048

Surveyor's Certificate

I CERTIFY THAT:
1. This survey and plan are correct and in accordance with the Surveys Act and the Surveyors Act and the regulations made under them.
2. The survey was completed on the 15th day of January, 2021.

February 10, 2021
Date

Richard R. Gauthier
Ontario Land Surveyor

Notes & Legend

- Denotes
- - - Survey Monument Planted
 - - - Survey Monument Found
 - SIB Standard Iron Bar
 - SSIB Short Standard Iron Bar
 - IB Iron Bar
 - SSIB* Short Standard Iron Bar
 - (WIT) Witness
 - Mess. Measured
 - (AOG) Annis, O'Sullivan, Vollebek Ltd.
 - (PI) Plan 4R-22204
 - Deciduous Tree
 - Coniferous Tree
 - Fire Hydrant
 - Water Valve
 - Water Stand Post
 - Maintenance Hole (Unidentified)
 - Maintenance Hole (Unidentified)
 - VC Valve Chamber (Watermain)
 - Overhead Wires
 - Catch Basin
 - CP Corrugated Plastic Pipe
 - T/P Top of Pipe
 - T/G Top of Grate
 - INV. Invert
 - GM Gas Meter
 - HT Hydro Transformer
 - UB Unidentified Terminal Box
 - B Bollard
 - S Sign
 - CLF Chain Link Fence
 - EOG Edge of Gravel
 - BOS Bottom of Slope
 - TOS Top of Slope
 - P Concrete base for Pillar
 - G Gate
 - LP Utility Pole
 - AN Anchor
 - LS Light Stand
 - STR Stake
 - D Diameter
 - +65.00 Location of Elevations
 - +65.00 Top of Concrete Curb Elevation
 - C/L Centreline
 - Property Line

SITE AREA = 1.04 ha

Bearings are grid, derived from the northerly limit of Part 1 Plan 4R-22204, shown to be N68°36'20"E thereon.

ELEVATION NOTES

1. Elevations shown are geodetic and are referred to the CGVD28 geodetic datum.
2. It is the responsibility of the user of this information to verify that the job benchmark has not been altered or disturbed and that its relative elevation and description agrees with the information shown on this drawing.

UTILITY NOTES

1. This drawing cannot be accepted as acknowledging all of the utilities and it will be the responsibility of the user to contact the respective utility authorities for confirmation.
2. Only visible surface utilities were located.
3. A field location of underground plant by the pertinent utility authority is mandatory before any work involving breaking ground, probing, excavating etc.

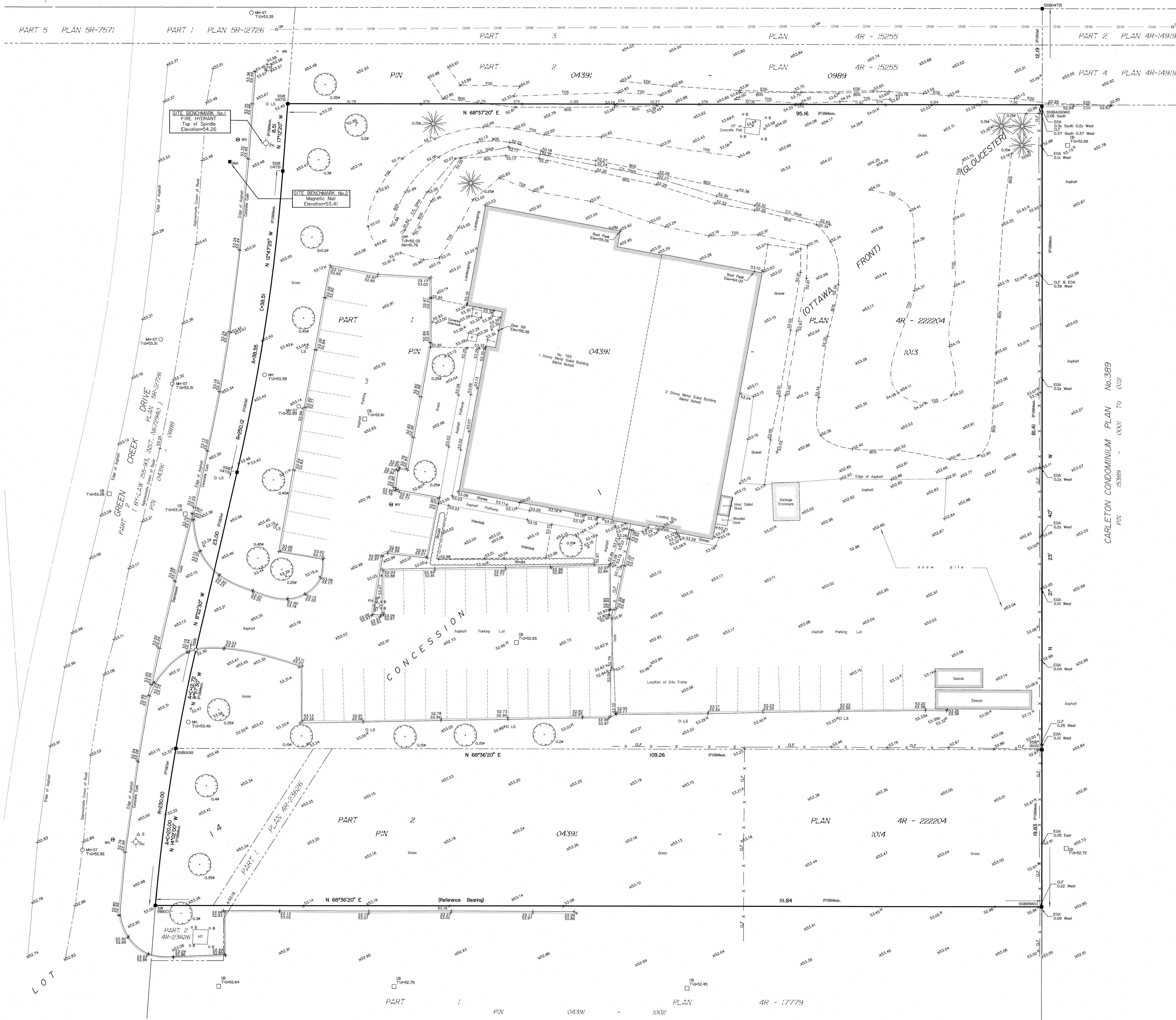
Topographic data was collected under Winter Conditions.
Snow cover and ice preclude determining location and elevation of some topographical data that is otherwise visible.

ASSOCIATION OF ONTARIO LAND SURVEYORS
PLAN SUBMISSION FORM
2165188

THIS PLAN IS NOT VALID UNLESS IT IS AN EMBOSSED ORIGINAL COPY ISSUED BY THE SURVEYOR
In accordance with Regulation 1028, Section 29 (3)

ANNIS, O'SULLIVAN, VOLLEBEK LTD.
14 Concourse Gate, Suite 500
Nepean, Ont. K2E 7S8
Phone: (613) 727-6860 / Fax: (613) 727-1079
Email: info@annisov.com

Ontario Land Surveyors
Reg. No. 21366-21 765000000000 PIV144000 POS F



LOT

PART 1 PIN 04391 PLAN 1002 4R-17779

CARLETON CONDOMINIUM PLAN No. 389
PIN 15389 - 0000 TO 0122