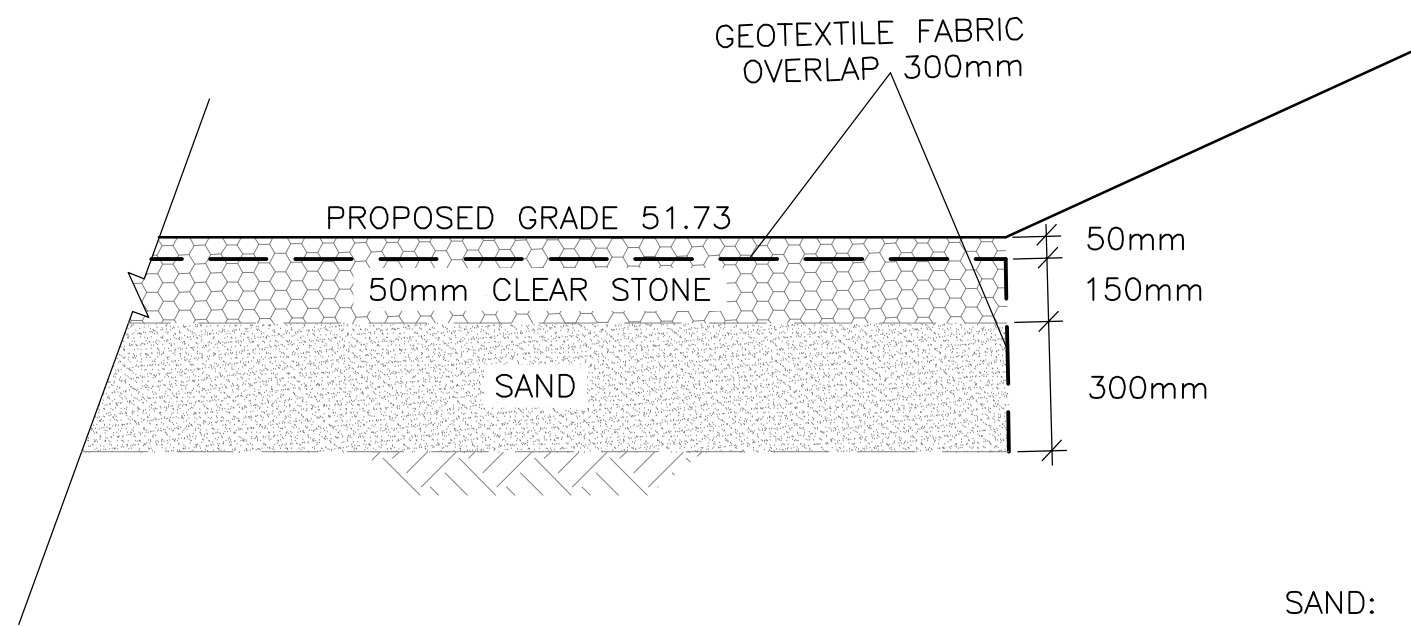


John Seigny

JOHN SEIGNY C.E.T.  
MANAGER (A), DEVELOPMENT REVIEW EAST  
PLANNING, DEVELOPMENT & BUILDING SERVICES  
DEPARTMENT, CITY OF OTTAWA

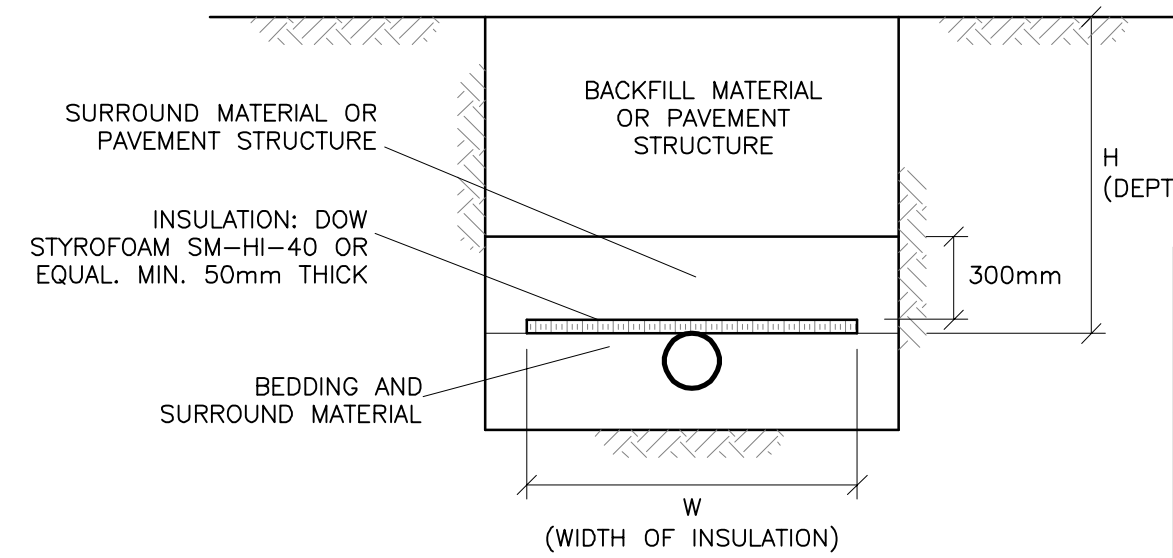
APPROVED

By seignyjo at 3:32 pm, Feb 13, 2025



INFILTRATION TRENCH  
(INSTALL AT THE END OF CONSTRUCTION)  
N.T.S.

SAND:  
EFFECTIVE SIZE  $D_{10}$  0.25  
UNIFORMITY COEFFICIENT  $C_u \leq 3.5$   
OR  
EFFECTIVE SIZE  $D_{10}=2.5$   
UNIFORMITY COEFFICIENT  $C_u \leq 1.5$

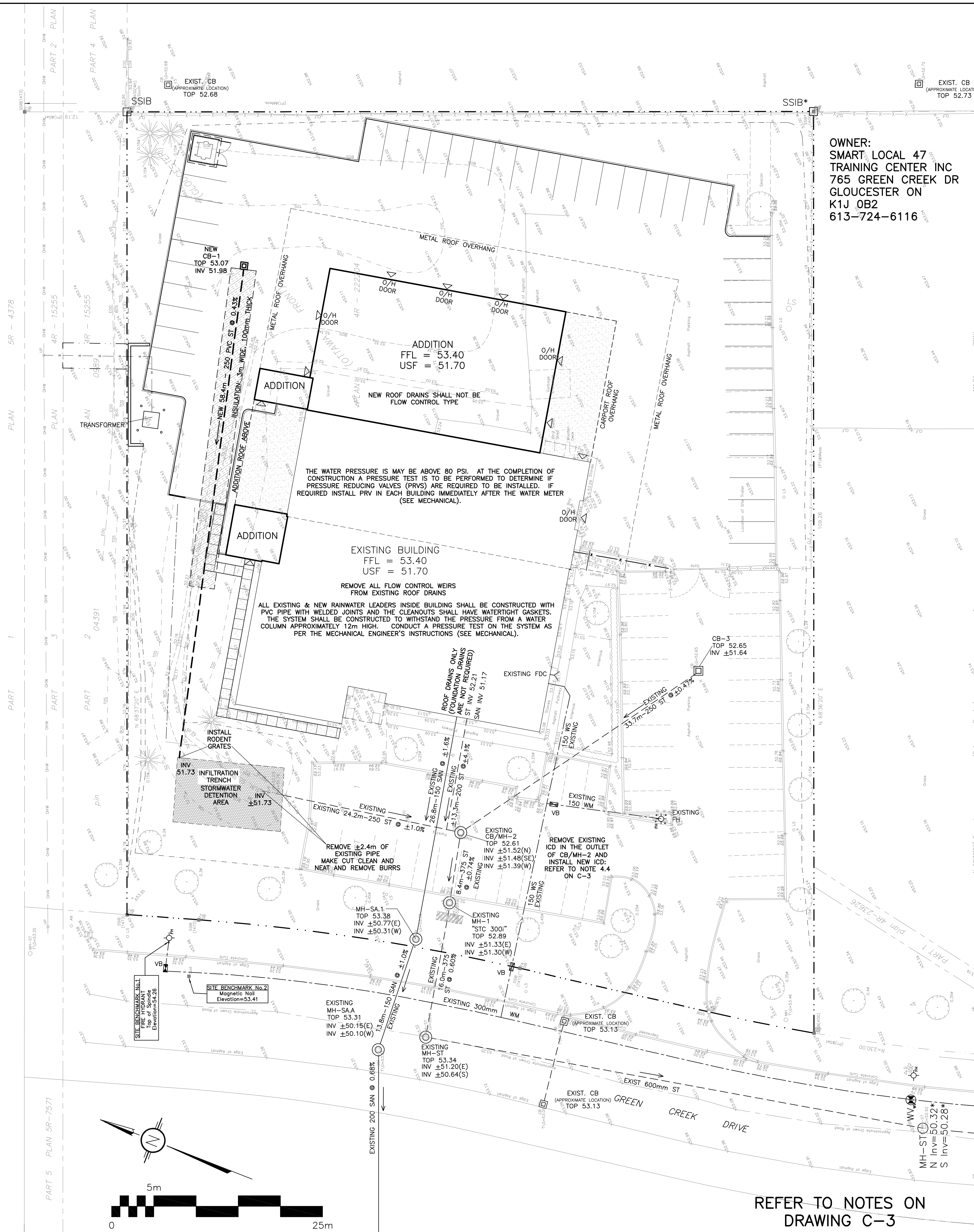


INSULATE SEWER AS INDICATED AND WHERE DEPTH  
OF COVER IS LESS THAN 2000mm.  
CENTER INSULATION OVER PIPE.  
JOINTS BETWEEN SHEETS OF INSULATION SHALL BE STAGGERED.

INSULATION OF SEWERS  
IN SHALLOW TRENCHES  
N.T.S.

## CATCH-BASIN & MANHOLE SCHEDULE

REF	TOP	SIZE	TYPE	INVERT AT INLET	INVERT AT OUTLET	NOTES
STORM SEWER						
CB-1	53.07	600 x 600mm	PRE-CAST CONCRETE CATCH-BASIN	-	51.98	TO OPSD 705.010 & CITY OF OTTAWA STANDARDS - FRAME & COVER TO CITY OF OTTAWA DRAWING No. S19.1

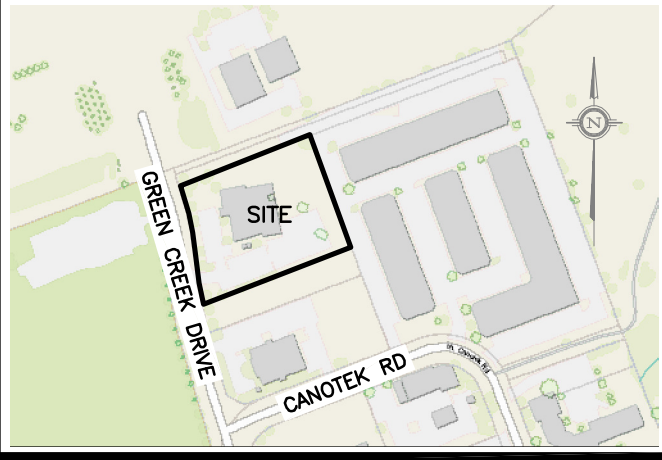


OWNER:  
SMART LOCAL 47  
TRAINING CENTRE INC  
765 GREEN CREEK DR  
GLOUCESTER ON  
K1J 0B2  
613-724-6116

## DRAWING LEGEND

CB	CATCH BASIN
MH	MANHOLE
CB/MH	CATCH BASIN/MANHOLE
SPL	SPRINGLINE OF PIPE
INV	INVERT OF PIPE
SAN	SANITARY SEWER
ST	STORM SEWER
WS/WM	WATER SERVICE/WATERMAIN
CS	CURB STOP & STANDPOST
VB	VALVE & VALVE BOX
FH	FIRE HYDRANT
FDC	FIRE DEPARTMENT CONNECTION
WM	WATER METER
+	EXISTING GRADE ELEVATION
+67.89	PROPOSED GRADE ELEVATION
2%	EXISTING SLOPE OF GRADE
2%	PROPOSED SLOPE OF GRADE
→	EMERGENCY OVERLAND FLOW
T.O.S.	TOP OF SLOPE
B.O.S.	BOTTOM OF SLOPE
---	CENTERLINE OF SWALE
---	PROPERTY LINE
---	SILT FENCE BARRIER
D.C.	150mm CURB/DEPRESSED CURB
---	LIGHT-DUTY PAVEMENT
---	HEAVY-DUTY PAVEMENT
---	CONCRETE
---	LANDSCAPE
FFL	FIRST FLOOR ELEVATION
TOF	TOP OF FOUNDATION
USF	UNDERSIDE OF FOOTING

## KEY PLAN



No.	DATE	REVISION
6	MAY 10-24	RE-ISSUED FOR APPROVAL
5	APR 21-23	RE-ISSUED FOR APPROVAL
4	JUN 30-22	RE-ISSUED FOR APPROVAL
3	MAR 26-21	ISSUED FOR APPROVAL
2	DEC 4-20	ISSUED FOR BUILDING PERMIT
1	SEP 10-20	ISSUED FOR COORDINATION

D.B. GRAY ENGINEERING INC.  
Stormwater Management - Grading & Drainage - Storm & Sanitary Sewers - Watermain  
700 Long Point Circle  
Ottawa, Ontario  
613-425-8044  
d.gray@dbgrayengineering.com

Project  
SMART LOCAL 47  
TRAINING CENTRE  
765 GREEN CREEK DRIVE  
OTTAWA, ONTARIO

## SITE SERVICING PLAN

Engineer's Seal D.B. GRAY 17016502 MAY 10-24 PROVINCE OF ONTARIO NOT VALID UNLESS SIGNED & DATED	Drawn D.B.G. Hor. Scale 1:250 Vert. Scale Date SEP 10-20 Job 20014 Drawing No. C-1 of 3 #18689
--	--