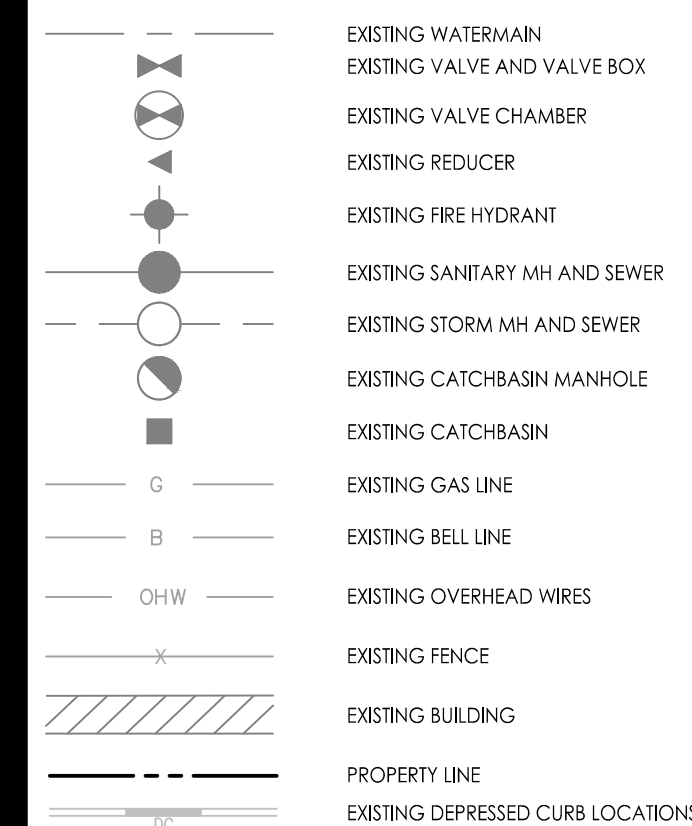


Copyright Reserved
The Contractor shall verify and be responsible for all dimensions. DO NOT scale the drawing - any errors or omissions shall be reported to Stantec without delay.
The Copyrights to all designs and drawings are the property of Stantec. Reproduction or use for any purpose other than that authorized by Stantec is forbidden.

Legend



Notes

1. THE LOCATION OF UTILITIES IS APPROXIMATE ONLY AND THE EXACT LOCATION SHOULD BE DETERMINED BY CONSULTING THE MUNICIPAL AUTHORITIES AND UTILITY COMPANIES CONCERNED. THE CONTRACTOR SHALL PROVE THE LOCATION OF UTILITIES AND SHALL BE RESPONSIBLE FOR THEIR PROTECTION AND THE IMPLEMENTATION OF ANY NECESSARY PROCEDURES CALLED FOR IN THE APPROPRIATE STANDARD AND REGULATIONS
2. TOPOGRAPHIC SURVEY SUPPLIED BY ANNIS, O'SULLIVAN, VOLLEBEKK LTD. No. 20477-20, PART 1 OF LOT 4 (EAST PARKDALE AVENUE LOTS) AND LOTS 3 AND 4 (WEST FORWARD AVENUE LOTS) REGISTERED PLAN 35, CITY OF OTTAWA, DATED MARCH 20, 2020.

| | | | | |
|----------|------------------------------|-----|-------|----------|
| 2 | REVISED AS PER CITY COMMENTS | WAJ | KJK | 22.04.12 |
| 1 | ISSUED FOR REVIEW | DW | KJK | 21.12.22 |
| Revision | | By | Appd. | YY.MM.DD |

| | | | | | |
|------------|--------------|------|-------|------|----------|
| File Name: | 160401680-D8 | DW | KJK | DW | 21.12.09 |
| | | Dwn. | Chkd. | Dgn. | YY.MM.DD |

Permit-Seal

Client/Project

VIKA LAND DEVELOPMENT GROUP INC.
2727 GRAND VISTA CR.
OTTAWA, ON, K2J 0W5

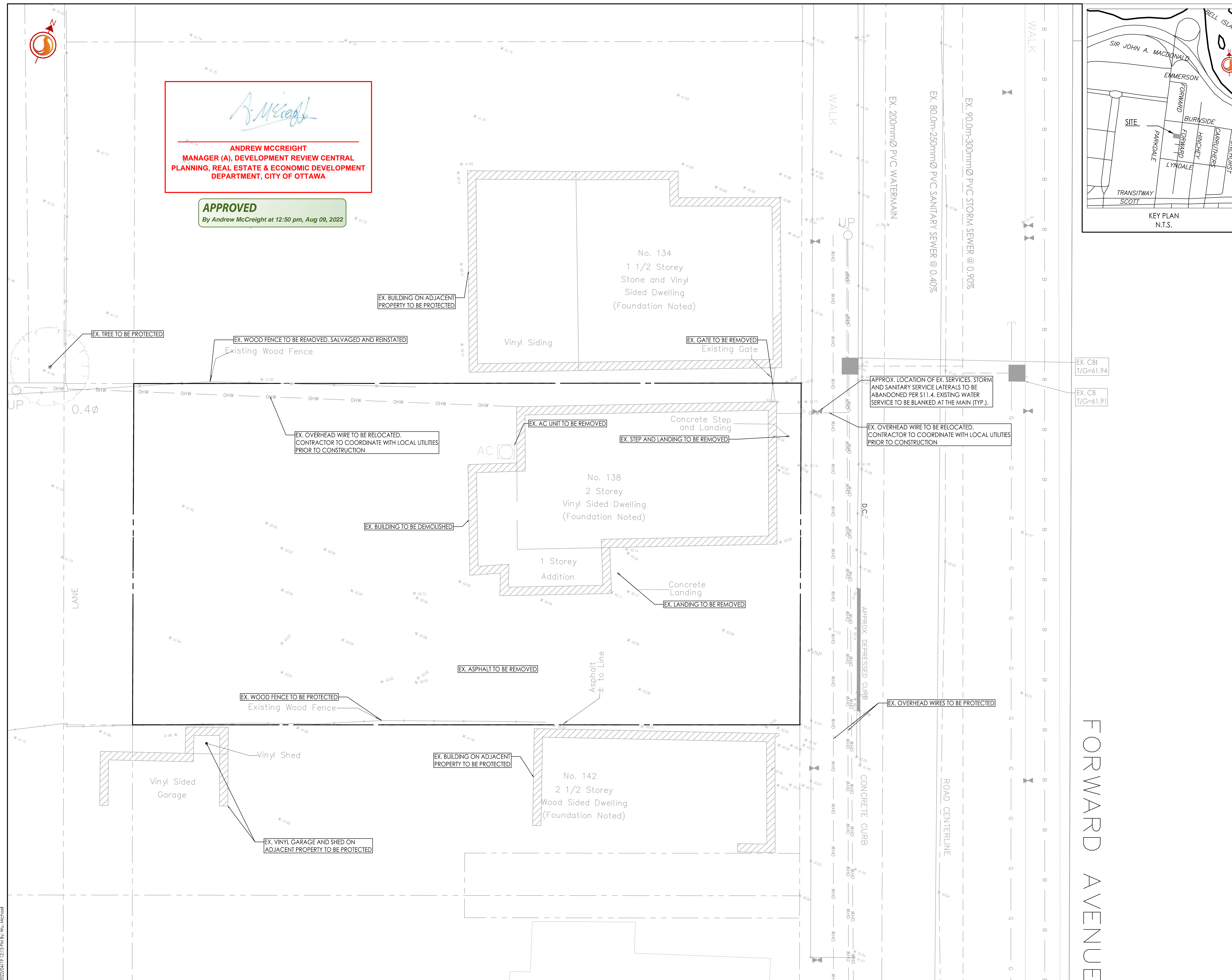
NEW APARTMENT BUILDING
138 FORWARD AVENUE
OTTAWA, ONTARIO

Title

EXISTING CONDITIONS
AND REMOVALS PLAN

| | | | | | |
|-------------|-------|---|------|------|-------|
| Project No. | Scale | 0 | 0.75 | 2.25 | 3.75m |
| 160401680 | 1:75 | | | | |

| | | |
|-------------|--------|----------|
| Drawing No. | Sheet | Revision |
| EX-1 | 1 of 5 | 2 |



Andrew McCreight
ANDREW MCCREIGHT
MANAGER (A), DEVELOPMENT REVIEW CENTRAL
PLANNING, REAL ESTATE & ECONOMIC DEVELOPMENT
DEPARTMENT, CITY OF OTTAWA

APPROVED
By Andrew McCreight at 12:50 pm, Aug 09, 2022

X:\Projects\160401680\160401680-ARCH-01.dwg
2022/08/09 12:53:00
160401680-ARCH-01.dwg