

SKETCH SHOWING TOPOGRAPHICAL INFORMATION ON:
 6001-6005 RENAUD ROAD,
 (Geographic Township of Gloucester)
 CITY OF OTTAWA
 Prepared by Annis, O'Sullivan, Vollebakk Ltd.
 Field Work Completed on October 20, 2023.



Metric
 DISTANCES SHOWN ON THIS PLAN ARE IN METRES AND CAN BE CONVERTED TO FEET BY DIVIDING BY 0.3048

GEOGRAPHIC INDEX
 Part of Lot 7
 Concession 3 (Ottawa Front)
 (Geographic Township of Gloucester)
 City of Ottawa

CAUTION
 THIS IS NOT A PLAN OF SURVEY AND SHALL NOT BE USED EXCEPT FOR THE PURPOSE INDICATED IN THE TITLE BLOCK.

Notes & Legend

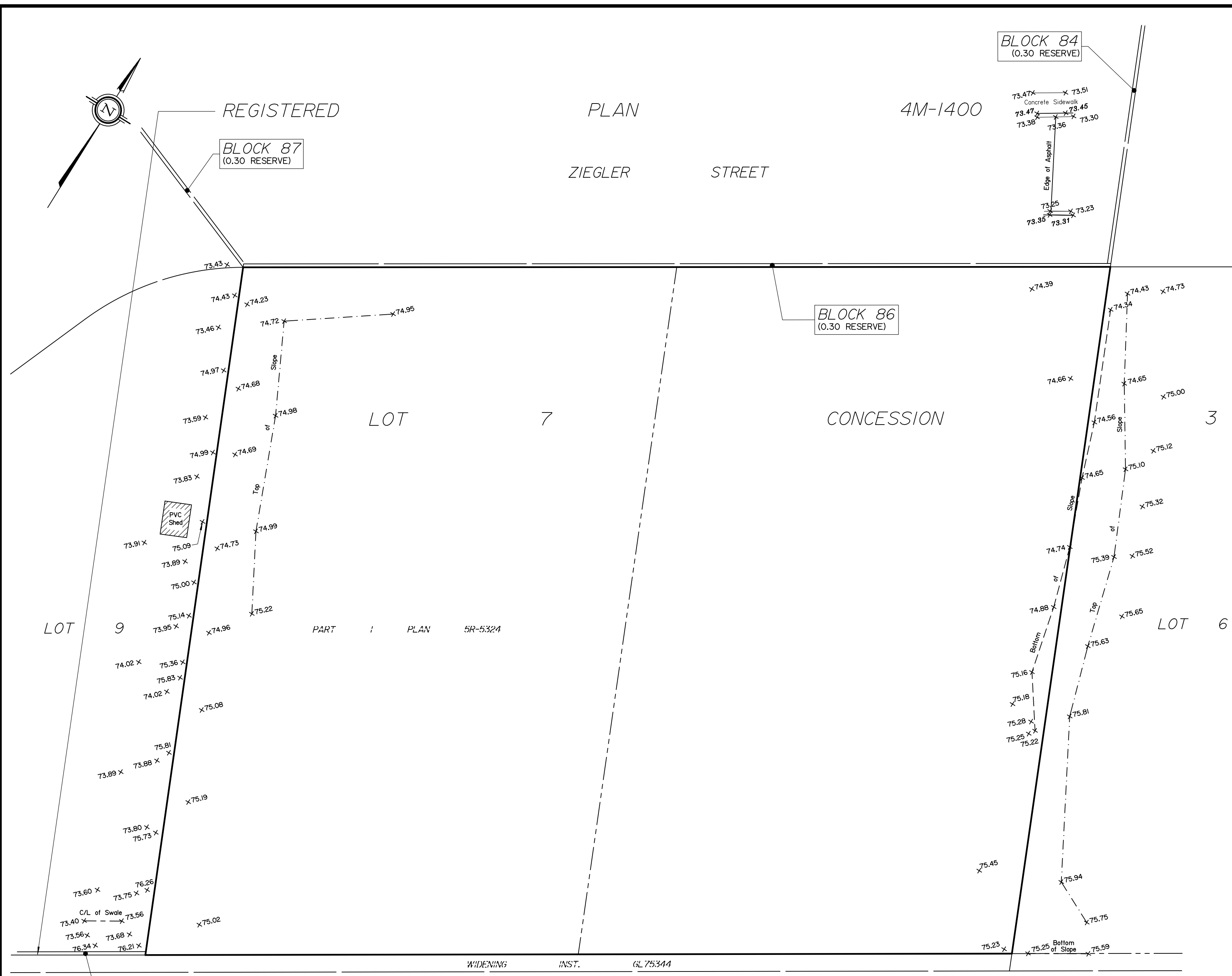
+ 65.00	Denotes	Location of Elevations
+ 65.00	"	Top of Concrete Curb Elevation
C/L	"	Centreline
—	"	Property Line

ELEVATION NOTES

- Elevations shown are geodetic and are referred to the CGVD28 geodetic datum.
- It is the responsibility of the user of this information to verify that the job benchmark has not been altered or disturbed and that its relative elevation and description agrees with the information shown on this drawing.

UTILITY NOTES

- This drawing cannot be accepted as acknowledging all of the utilities and it will be the responsibility of the user to contact the respective utility authorities for confirmation.
- Only visible surface utilities were located.
- A field location of underground plant by the pertinent utility authority is mandatory before any work involving breaking ground, probing, excavating etc.



REGISTERED

PLAN

4M-1400

BLOCK 87
(0.30 RESERVE)

ZIEGLER STREET

BLOCK 84
(0.30 RESERVE)

BLOCK 86
(0.30 RESERVE)

LOT 7

CONCESSION 3

LOT 6

PART I PLAN 5R-5324

WIDENING INST. GL 75344

ROAD ALLOWANCE BETWEEN CONCESSIONS 3 AND 4 (OTTAWA FRONT)
 KNOWN AS RENAUD ROAD (FOURTH LINE ROAD)

BLOCK 84
(0.30 RESERVE)

© Annis, O'Sullivan, Vollebakk Ltd, 2023. "THIS PLAN IS PROTECTED BY COPYRIGHT"

ANNIS, O'SULLIVAN, VOLLEBEKK LTD.
 165 Bay Street
 Embrun, Ont. K0A 1W1
 Phone: (613) 443-3364
 Email: Embrun@aovltd.com

Ontario Land Surveyors Job No. 3430-23 A.M.