

PART OF LOT 7
CONCESSION 3 (OTTAWA FRONT)
(Geographic Township of Gloucester)
CITY OF OTTAWA

Surveyed by Annis, O'Sullivan, Vollebakk Ltd.

Scale 1 : 250
10 7.5 5.0 2.5 0 5 10 Metres

Metric
DISTANCES SHOWN ON THIS PLAN ARE IN METRES AND
CAN BE CONVERTED TO FEET BY DIVIDING BY 0.3048

Surveyor's Certificate

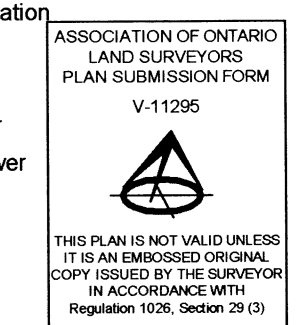
I CERTIFY THAT:
1. This survey and plan are correct and in accordance with the Surveys Act, the Surveyors Act and the regulations made under them.
2. The survey was completed on May 7, 2021.

May 14/21 Date
J. Allison
Ontario Land Surveyor

ANNIS, O'SULLIVAN, VOLLEBEKK LTD grants to
Landlord Homeowner (The Client), their solicitors,
mortgagees, and other related parties, permission to use original, signed, sealed
copies of the Topographical Plan of Survey in transactions involving The Client.

Notes & Legend

Table with 2 columns: Symbol and Description. Includes symbols for Survey Monument Planted, Survey Monument Found, Standard Iron Bar, Short Standard Iron Bar, Iron Bar, Origin Unknown, Nail & Washer, Witness, Measured, Annis, O'Sullivan, Vollebakk Ltd., Registered Plan 4M-1400, Registered Plan 4M-1373, Plan 5R-5324, Plan and Profile of Ziegler Street (T.L. Mak Engineer Consultants, Project 805-47) Drawing P-2 Rev. 5 "As Recorded" 07/22/14, City of Ottawa U.C.C. Central Registry Data, Sheet J-29-24 Dated August 2015, Plan and Profile of Renaud Road (Stantec Project 160400704) Drawing PP-2 Rev. 7 "As Recorded" 11/12/12, City of Ottawa U.C.C. Central Registry Data, Sheet J-29-30 Dated August 2015, Inst. CT257733, Deciduous Tree, Coniferous Tree, Fire Hydrant, Maintenance Hole (Storm Sewer), Maintenance Hole (Sanitary), Maintenance Hole (Unidentified), Catch Basin, Gas Meter, Sign, Chain Link Fence, Board Fence, Utility Pole, Light Standard, Air Conditioner, Diameter, Location of Elevations, Top of Concrete Curb Elevation, Top of Retaining Wall Elevation, Property Line, Underground Storm Sewer, Underground Sanitary Sewer, Underground Water, Underground Power, Underground Gas, Overhead Wires.



Bearings are grid, derived from Can-Net 2016 Real Time Network GPS observations and are referenced to Specified Control Points 01919680184 and 019198434761, MTM Zone 9 (76°30' West Longitude) NAD-83 (original).

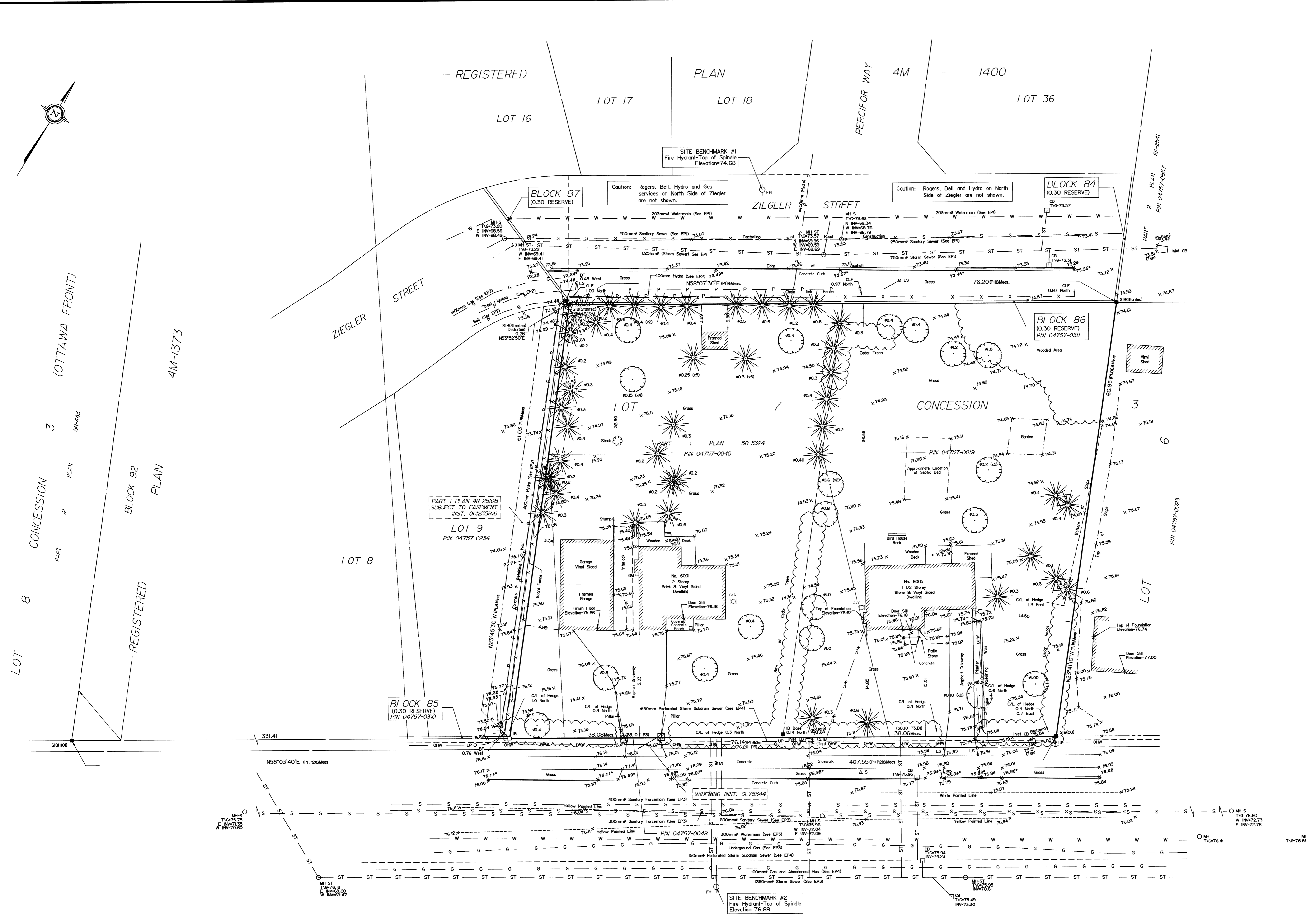
Coordinate values are to urban accuracy in accordance with O. Reg. 216/10.
.01919680184 Northing 5040610.16 Easting 384736.56
.019198434761 Northing 5036178.12 Easting 372436.11

ELEVATION NOTES

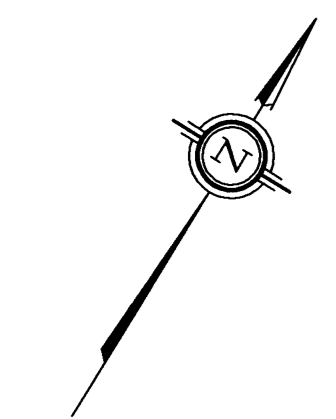
1. Elevations shown are geodetic and are referred to the CGVD28 geodetic datum.
2. It is the responsibility of the user of this information to verify that the job benchmark has not been altered or disturbed and that its relative elevation and description agrees with the information shown on this drawing.

UTILITY NOTES

1. This drawing cannot be accepted as acknowledging all of the utilities and it will be the responsibility of the user to contact the respective utility authorities for confirmation.
2. Only visible surface utilities were located.
3. A field location of underground plant by the pertinent utility authority is mandatory before any work involving breaking ground, probing, excavating etc.
4. Underground services (including invert elevations) shown are compiled from EP1, EP2, EP3 and EP4 and are subject to field confirmation.



ROAD ALLOWANCE BETWEEN CONCESSIONS 3 AND 4 (OTTAWA FRONT) KNOWN AS RENAUD ROAD (FOURTH LINE ROAD)



LOT 8
CONCESSION 3
PART 12
BLOCK 92
PLAN 4M-1373
REGISTERED

