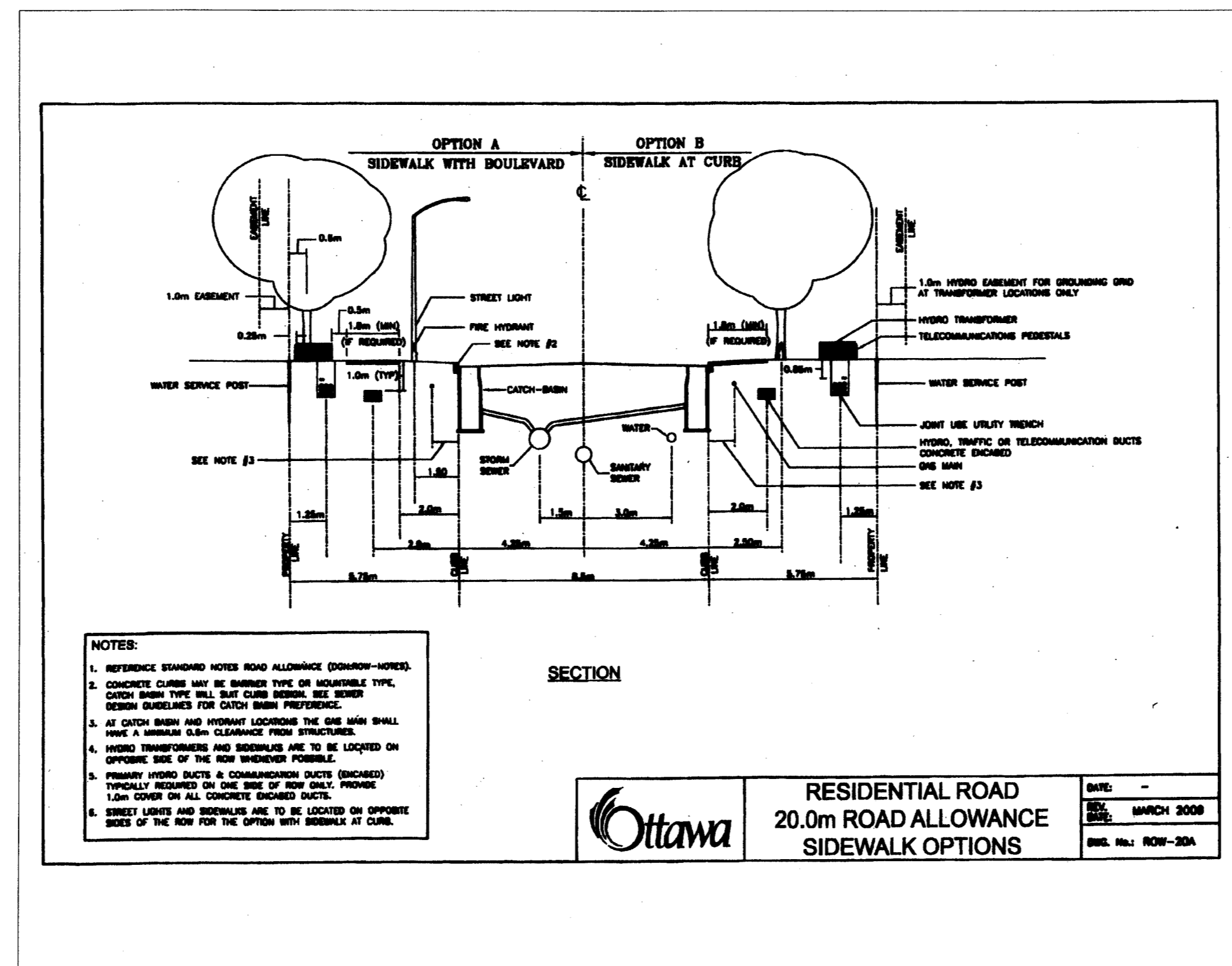
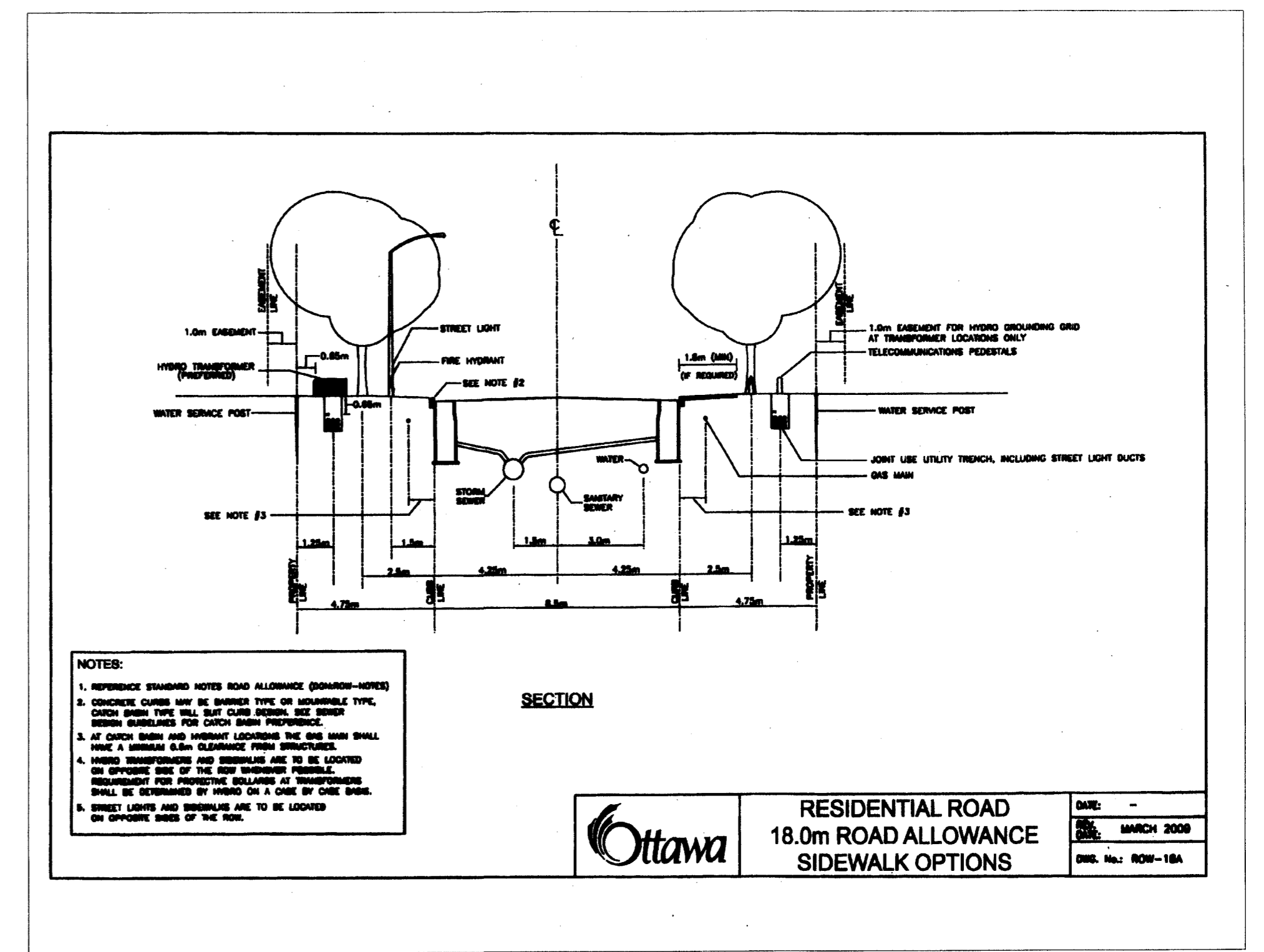
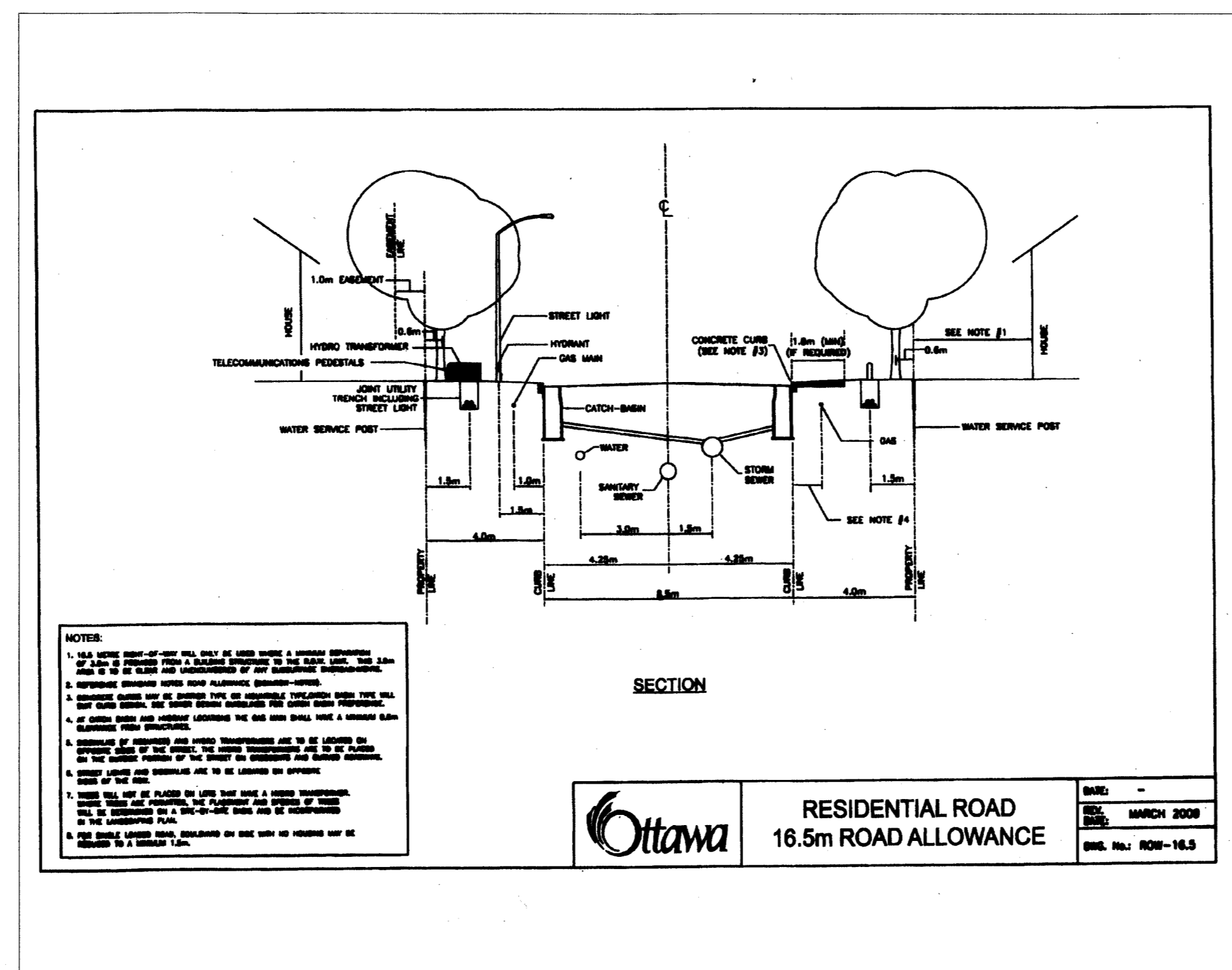


TYPICAL CLAY DYKE DETAIL
(NOT TO SCALE)



NOTE:
1.) FOR DETAILS OF EXISTING 20.0m (R.O.W.) ROAD RIGHT OF WAY CROSS SECTIONAL DETAIL CONSTRUCTED BY OTHERS, REFER TO TROW ASSOCIATES DETAILS #1 DT1 REV. #4 DATED NOVEMBER 11, 2007.

Reviewed By
Development/Regulatory Branch
Signed: *[Signature]*
Date: Nov. 26/2009

NO.	REVISION	DATE	BY
4	PAVEMENT STRUCTURE REVISION AS PER GOLDER ASSOCIATES' RECOMMENDATION OF JUNE 29/09	06/29/09	T.L.M.
3	REVISIONS AS PER CITY'S COMMENTS OF OCT. 9/08	09/22/08	T.L.M.
2	REVISIONS AS PER CITY'S COMMENTS OF AUG. 14/08	08/08/08	T.L.M.
1	REVISIONS AS PER CITY'S COMMENTS OF FEB./08	04/10/08	T.L.M.

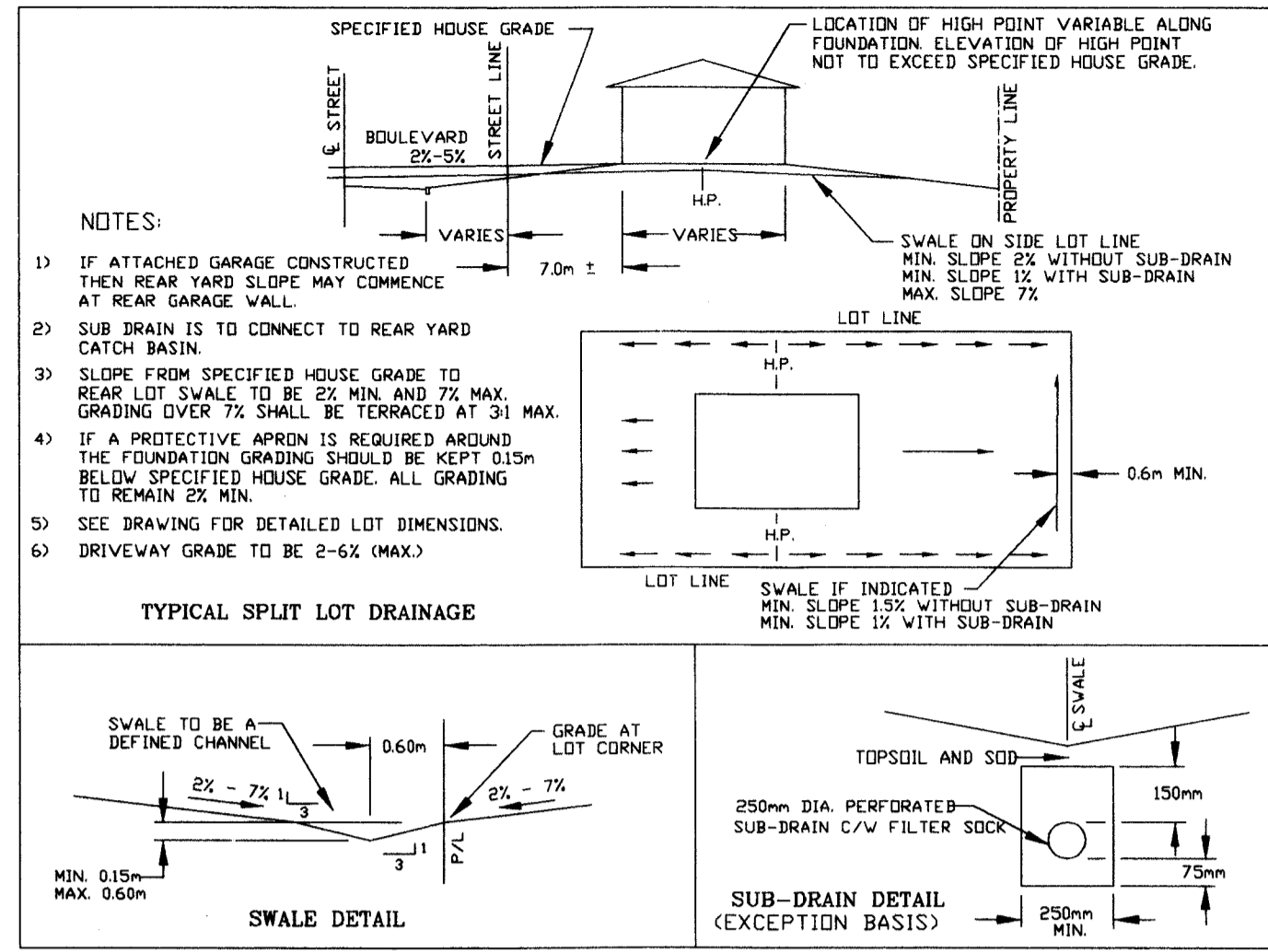
SCALE	DESIGN	T.L.M.
AS SHOWN	CHECKED	T.L.M.
	DRAWN BY	BV
HORIZONTAL	CHECKED	T.L.M.
	APPROVED	T.L.M.
VERTICAL		

PROJECT LOCATION
PART OF LOT 7 CONCESSION 3 (O.F.)
TOWNSHIP OF GLOUCESTER
CITY OF OTTAWA
FORMERLY IN THE CITY OF GLOUCESTER
DRAWING TITLE
JEAN GUY RIVARD SUBDIVISION
BRADLEY ESTATES NORTH
CONSTRUCTION DETAILS

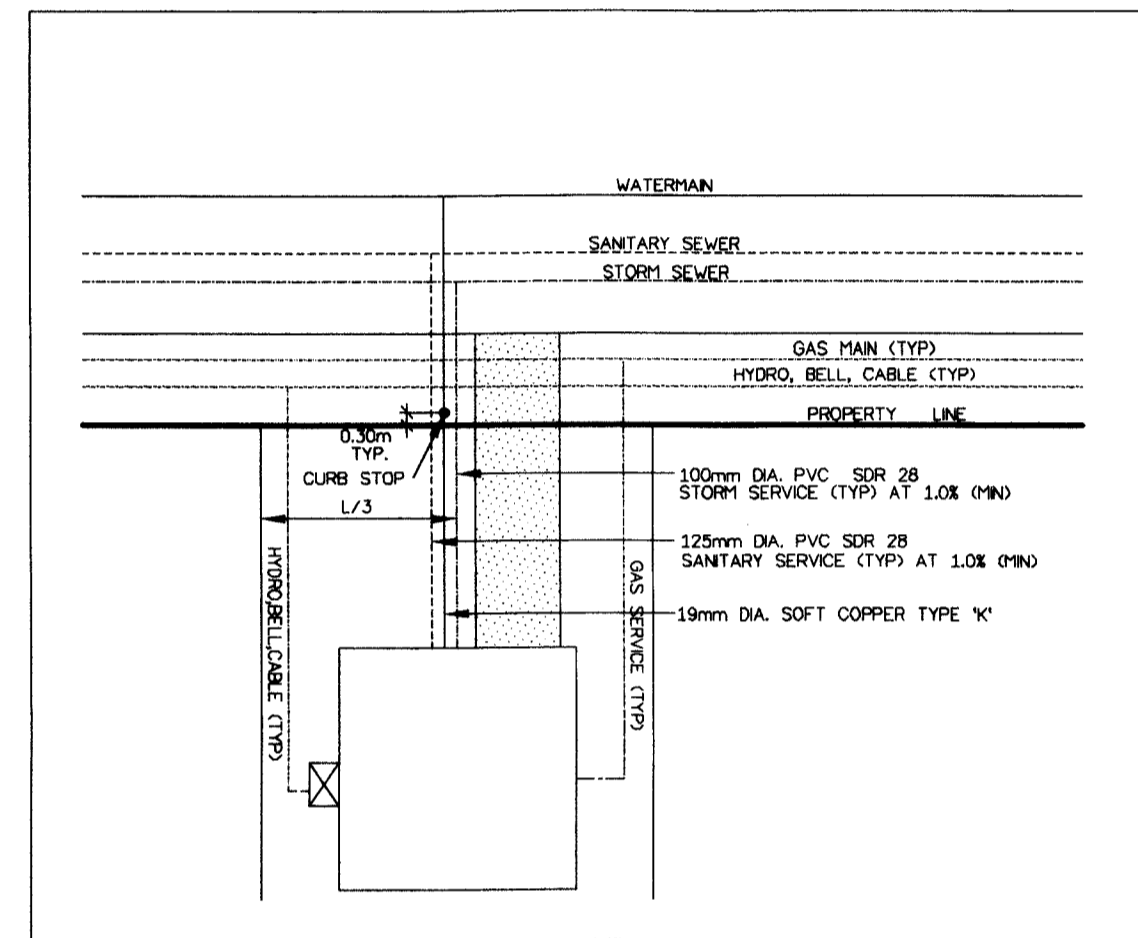
T.L. MAK ENGINEERING CONSULTANTS LTD. CONSULTING ENGINEERS		
PROJECT No. 805-47	DATE DECEMBER 2007	DRAWING No. CD-1

D07-16-08-0009

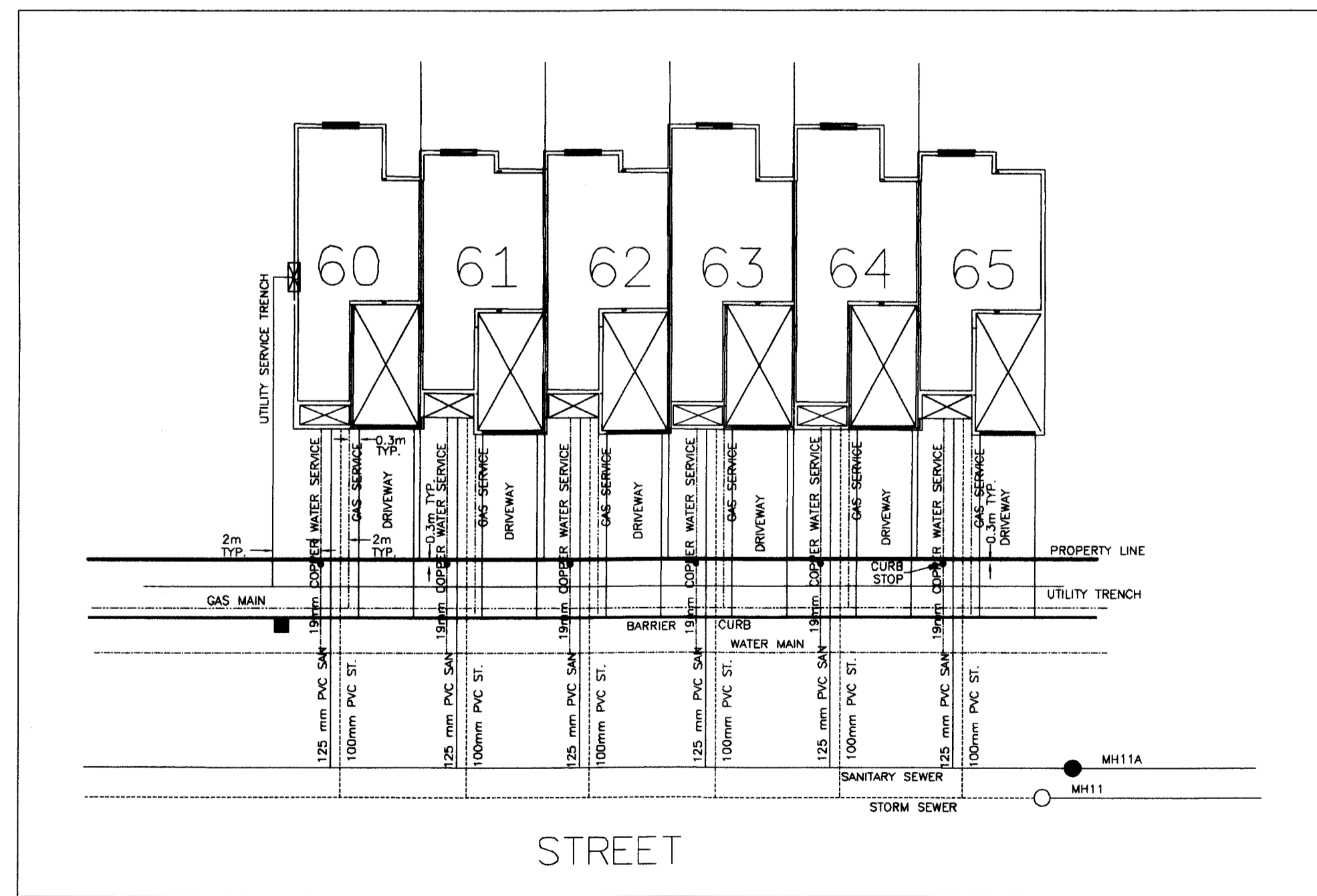
Plan no. 14762



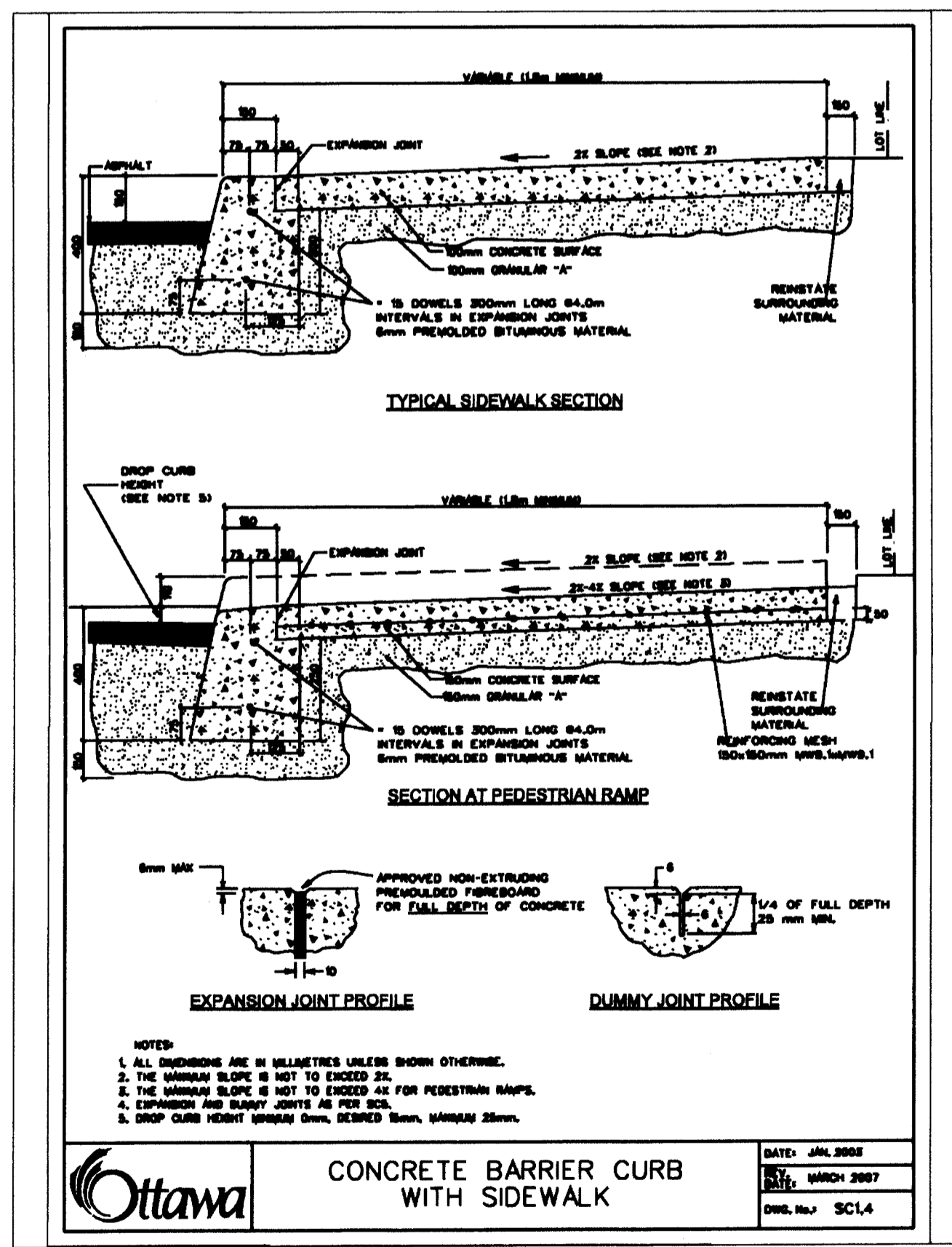
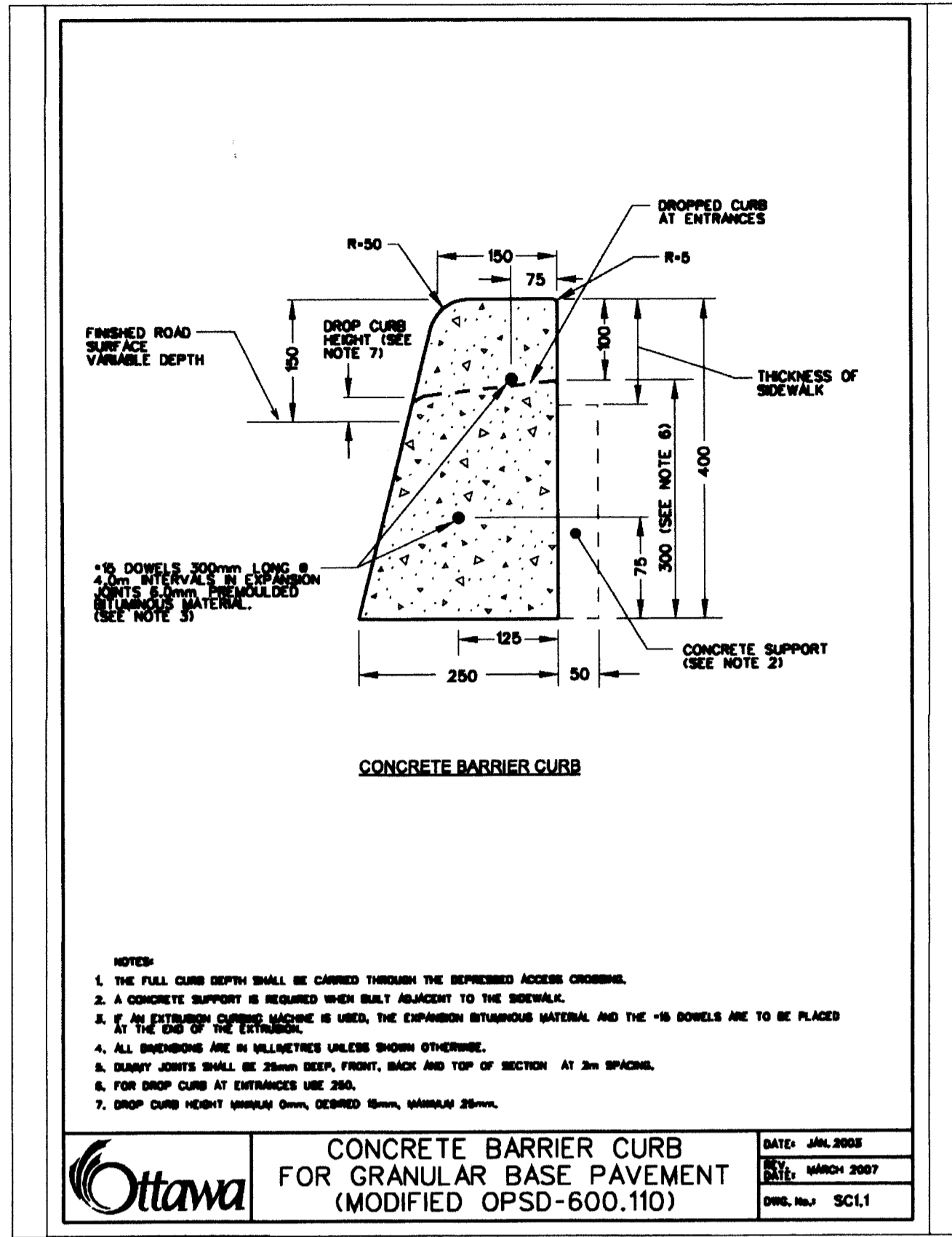
TYPICAL GRADE CONTROL REQUIREMENTS
N.T.S.



TYPICAL SERVICE CONNECTION (SINGLE FAMILY)
N.T.S.



TYPICAL SERVICE LOCATIONS FOR ON-STREET TOWNHOUSES
(NOT TO SCALE)



Reviewed By
Development Review Branch
Signed: *[Signature]*
Date: Nov. 10, 2009

NO.	REVISION	DATE	BY
3	REVISIONS AS PER CITY'S COMMENTS OF DEC. 8/08	12/08/08	T.L.M.
2	REVISIONS AS PER CITY'S COMMENTS OF AUG. 14/08	09/09/08	T.L.M.
1	REVISIONS AS PER CITY'S COMMENTS OF FEB./08	06/10/08	T.L.M.

10/1/09
[Signature]

SCALE	DESIGN	T.L.M.
AS SHOWN	CHECKED	T.L.M.
HORIZONTAL	DRAWN BY	BV
	CHECKED	T.L.M.
VERTICAL	APPROVED	T.L.M.

PROJECT LOCATION
PART OF LOT 7 CONCESSION 3 (O.F.)
TOWNSHIP OF GLOUCESTER
CITY OF OTTAWA
FORMERLY IN THE CITY OF GLOUCESTER

DRAWING TITLE
JEAN GUY RIVARD SUBDIVISION
BRADLEY ESTATES NORTH
CONSTRUCTION DETAILS

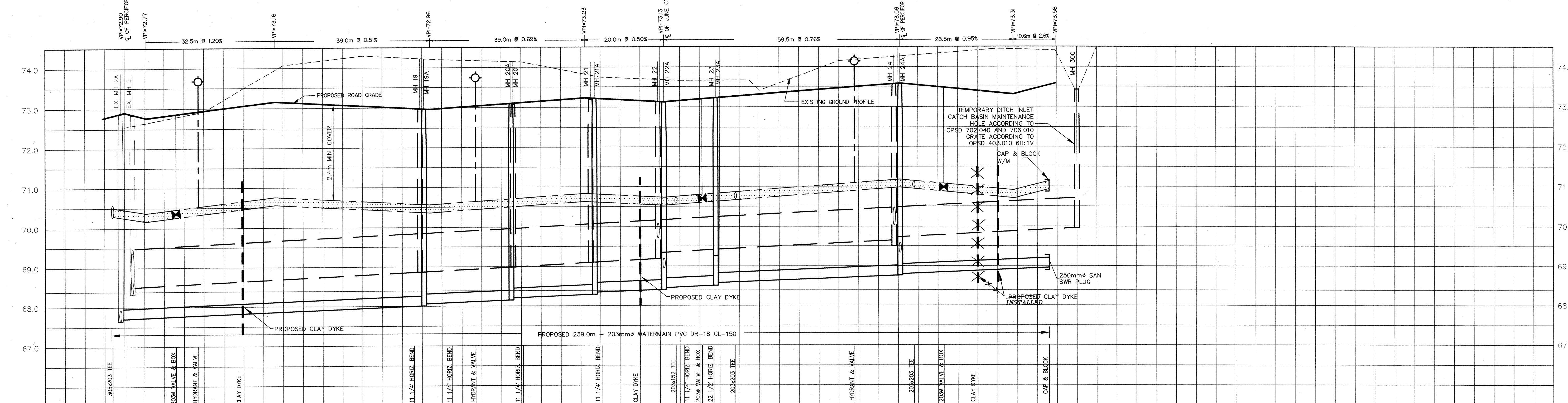
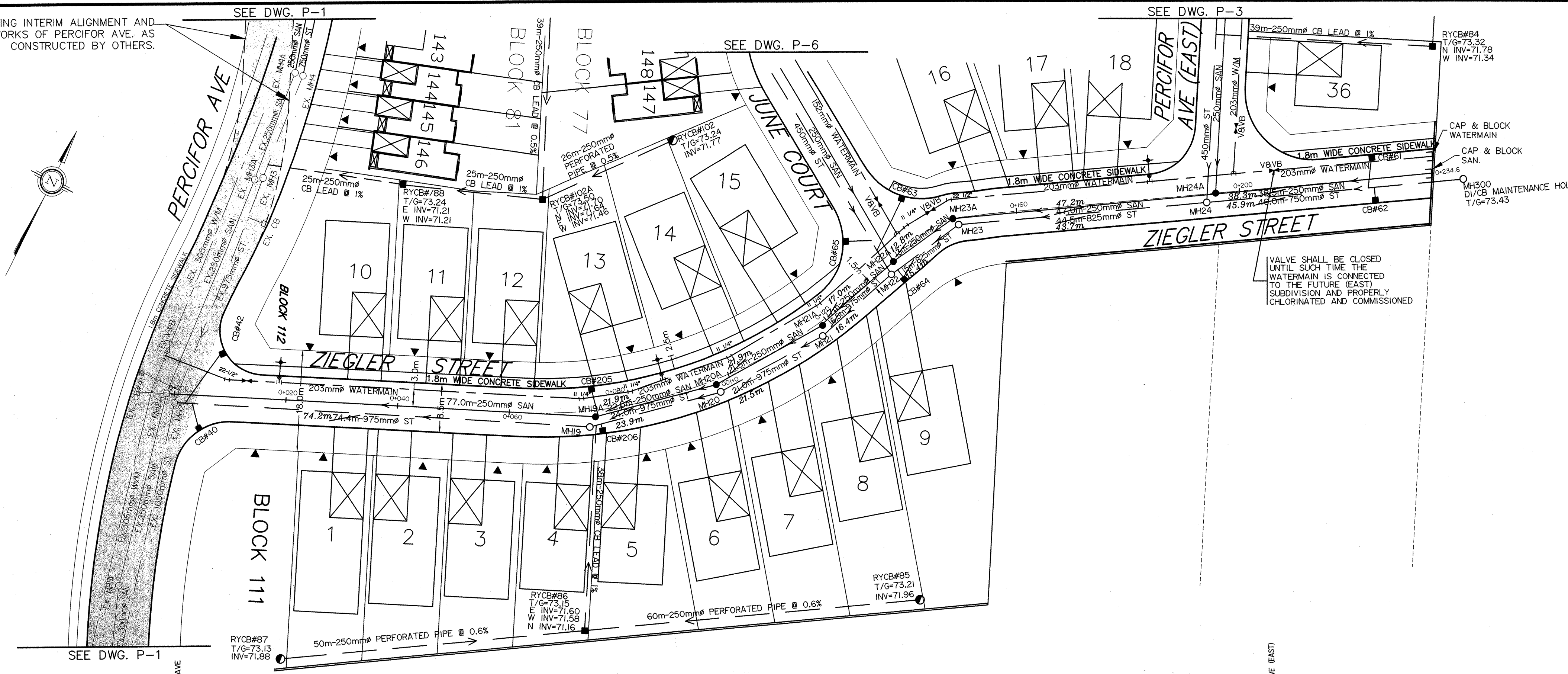
T.L. MAK ENGINEERING CONSULTANTS LTD. CONSULTING ENGINEERS		
PROJECT No.	DATE	DRAWING No.
805-47	DECEMBER 2007	CD-2

007-16-08-009

Plan no. 14962

EXISTING INTERIM ALIGNMENT AND SURFACE WORKS OF PERCIVOR AVE. AS CONSTRUCTED BY OTHERS.

"T.L. MAK ENGINEERING CONSULTANTS LTD. AGREED TO PERFORM A GENERAL REVIEW OF CONSTRUCTION ACTIVITIES DURING THE INSTALLATION OF SANITARY AND STORM SEWERS AND A WATERMAIN FOR THIS PROJECT. IT IS T.L. MAK ENGINEERING CONSULTANTS LTD.'S OPINION, TO THE BEST OF KNOWLEDGE AVAILABLE, THAT THIS WORK HAS BEEN DONE IN GENERAL CONFORMANCE WITH CITY OF OTTAWA STANDARDS ACCORDING TO THE DESIGN AND DRAWINGS THAT HAVE BEEN APPROVED BY THE CITY OF OTTAWA."



PROPOSED CENTER LINE OF ROAD ELEVATIONS	72.90	72.77	72.84	73.16	73.15	73.05	72.96	72.88	73.12	73.13	73.16	73.13	73.46	73.54	73.35	73.31	73.46	73.58
TOP OF WATERMAIN ELEVATIONS	70.95	70.87	70.86	70.85	70.76	70.75	70.67	70.56	70.72	70.83	70.70	70.72	71.08	71.18	70.95	70.91	71.14	71.58
STORM SEWER INVERTS	67.64	67.52	67.49	68.09	68.09	68.09	68.09	68.09	68.09	68.09	68.09	68.09	68.09	68.09	68.09	68.09	68.09	68.09
SANITARY SEWER INVERTS	67.64	67.52	67.49	68.09	68.09	68.09	68.09	68.09	68.09	68.09	68.09	68.09	68.09	68.09	68.09	68.09	68.09	68.09
EXISTING ELEVATION	74.51	74.51	74.51	74.51	74.51	74.51	74.51	74.51	74.51	74.51	74.51	74.51	74.51	74.51	74.51	74.51	74.51	74.51
CHAINAGE	0+003	0+004	0+005	0+006	0+007	0+008	0+009	0+010	0+011	0+012	0+013	0+014	0+015	0+016	0+017	0+018	0+019	0+020

NOTES:

- EXISTING SERVICES AND UTILITIES SHOWN ON THIS DRAWING WERE TAKEN FROM THE BEST AVAILABLE RECORDS BUT ARE NOT COMPLETE. CONTRACTOR IS REQUIRED TO CHECK IN THE FIELD FOR LOCATION AND ELEVATION OF PIPES AND CHECK WITH UTILITY COMPANIES BEFORE DIGGING.
- ANY SURFACE OR SUBSURFACE INFORMATION AND DATA FURNISHED TO THE CONTRACTOR IN RELATION TO THE CONTRACT AS INDICATED ON THE DRAWINGS OR BY REPORT, IS NOT INTENDED AS A REPRESENTATION OF WARRANTY, BUT IS FURNISHED IN ORDER THAT THE CONTRACTOR MAY HAVE ACCESS TO THE SAME INFORMATION WHICH IS AVAILABLE TO THE OWNER AND ENGINEERS WILL NOT BE RESPONSIBLE FOR THE ACCURACY THEREOF OR ANY DEDUCTION, INTERPRETATION OR CONCLUSION DRAWN THEREFROM BY THE CONTRACTOR.
- CONTRACTOR IS ADVISED TO COLLECT INFORMATION ON SOIL CONDITIONS AS DEEMED NECESSARY.
- CONSTRUCT CLAY DYKE AS SHOWN ON THE LOCATION OF THIS DRAWING AND REFER TO DWG. NO. CD-1 FOR DETAILS.
- ROADWAY CATCH BASIN LEAD SHALL BE 200mm PVC AT SLOPE OF 1% (MIN) UNLESS OTHERWISE NOTED.
- REFER TO STATNEC CONSULTING'S SIRM REPORT INLET CONTROL DATA TABLE FOR DETAILS OF CB LEAD INVERT ELEVATION AND INLET CONTROL DEVICE (ICD) INSERTS.
- SEWER BEDDING SHALL BE CLASS "B" UNLESS OTHERWISE NOTED.
- CONSTRUCT ALL STORM AND SANITARY SEWER SYSTEMS IN ACCORDANCE WITH CITY OF OTTAWA'S LATEST REVISED STANDARDS OTHERWISE AS PER OPSS REQUIREMENTS AND DONE TO THE SATISFACTION OF THE ENGINEERS AND THE CITY.
- ALL WATERWORKS TO BE CONSTRUCTED TO THE CITY OF OTTAWA'S LATEST REVISED STANDARDS AND REQUIREMENTS.
- CATHODIC PROTECTION FOR PVC PRESSURE PIPE WATERMAIN SYSTEM AS PER CITY'S WS-40 DETAILS.
- MAXIMUM ALLOWABLE DEFLECTION IS 1% PER PIPE FOR 150mm AND 200mm DIAMETER WATERMAIN.

REVISIONS:

NO.	REVISION	DATE	BY
5	AS RECORDED	07/22/14	TLM
4	ADDED 1.8m SIDEWALK ON ZIEGLER ST. AND ADJUSTED HYDRANT LOCATION	04/01/09	TLM
3	REVISED REF. NO. OF LOTS & TOWNS PER SUBDIVISION 4M-PLAN AND PER CITY'S COMMENTS OF 10/09/08	02/23/09	TLM
2	REVISIONS AS PER CITY'S COMMENTS OF AUG.14/08	09/12/08	TLM
1	REVISIONS AS PER CITY'S COMMENTS OF FEB./08	06/10/08	TLM

SCALE:
 DESIGN: T.L.M.
 CHECKED: T.L.M.
 DRAWN BY: B.V.
 CHECKED: T.L.M.
 APPROVED: T.L.M.

PROJECT LOCATION:
 PART OF LOT 7, CONCESSION 3 (OF)
 GEOGRAPHIC TOWNSHIP OF GLOUCESTER
 CITY OF OTTAWA
 FORMERLY IN THE CITY OF GLOUCESTER

PROJECT:
 JEAN GUY RIVARD SUBDIVISION
 BRADLEY ESTATES NORTH
 PLAN AND PROFILE
 ZIEGLER STREET (STA. 0+003 TO 0+240)

PROJECT No.: 805-47
DATE: FEBRUARY 2007
DRAWING No.: P-2

T.L. MAK ENGINEERING CONSULTANTS LTD.
 CONSULTING ENGINEERS
 14962

D07-16-07-009