



**LRL File No.** 210216-03  
**Project:** Residential Development (20 Stacked TH)  
**Location:** 6001/6005 Renaud Rd  
**Date:** December 19th, 2023

**Sanitary Design Parameters**

Average Daily Flow = 280 L/p/day  
 Commercial & Institutional Flow = 50000 L/ha/day  
 Light Industrial Flow = 35000 L/ha/day  
 Heavy Industrial Flow = 55000 L/ha/day  
 Maximum Residential Peak Factor = 4.0  
 Commercial & Institutional Peak Factor = 1.5

Industrial Peak Factor = as per Appendix 4-B = 7  
 Extraneous Flow = 0.33L/s/gross ha

**Pipe Design Parameters**

Minimum Velocity = 0.60 m/s  
 Manning's n = 0.013

LOCATION			RESIDENTIAL AREA AND POPULATION						COMMERCIAL		INDUSTRIAL			INSTITUTIONAL		C+I+I	INFILTRATION			TOTAL FLOW (l/s)	PIPE					
STREET	FROM MH	TO MH	AREA (Ha)	POP.	CUMMULATIVE		PEAK FACT.	PEAK FLOW (l/s)	AREA (Ha)	ACCU. AREA (Ha)	AREA (Ha)	ACCU. AREA (Ha)	PEAK FACT.	AREA (Ha)	ACCU. AREA (Ha)	PEAK FLOW (l/s)	TOTAL AREA (Ha)	ACCU. AREA (Ha)	INFILT. FLOW (l/s)	TOTAL FLOW (l/s)	LENGTH (m)	DIA. (mm)	SLOPE (%)	MATERIAL	CAP. (FULL) (l/s)	VEL. (FULL) (m/s)
					AREA (Ha)	POP.																				
SITE	MH3	MH2	0.291	54.0	0.29	54.0	4.0	0.70	0.000	0.000	0.00	0.00	7.0	0.0	0.0	0.00	0.291	0.291	0.10	0.80	69.6	150	1.50%	PVC	18.65	1.06
SITE	MH2	MH1						0.70									0.291	0.291	0.10	0.80	24.6	150	1.50%	PVC	18.65	1.06
SITE	MH1	SAN SWR						0.70									0.291	0.291	0.10	0.80	23.7	150	1.50%	PVC	18.65	1.06

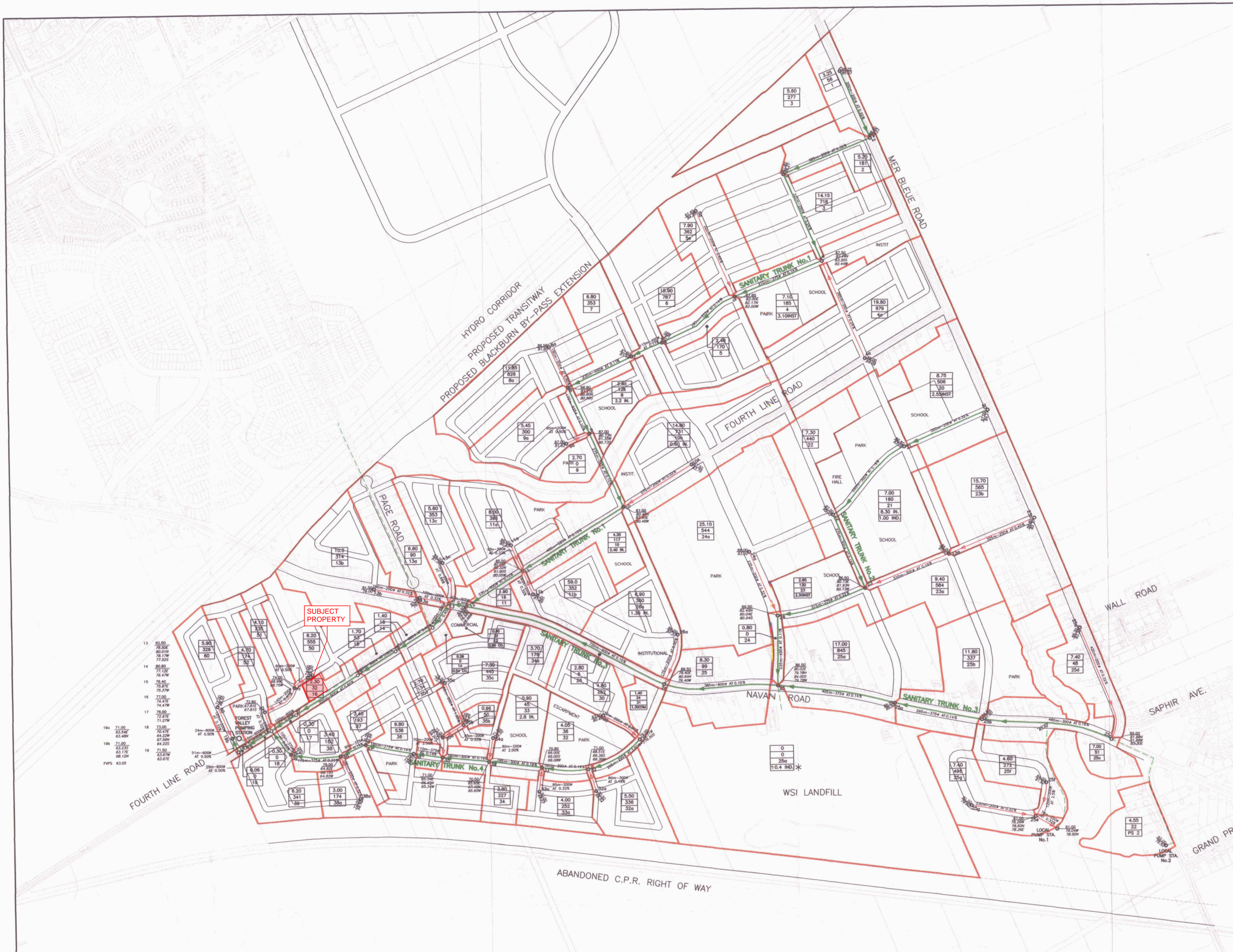
NOTES Existing inverts and slopes are estimated. They are to be confirmed on-site.

Designed:	K.H.	PROJECT:	Navan Stacked Townhomes
Checked:	V.J.	LOCATION:	6001/6005 Renaud Rd
Dwg. Reference:	C401	File Ref.:	210216-03
		Date:	
			Sheet No. 1 of 1





- 12a SANITARY SEWER AND MANHOLE
- 12 SANITARY TRUNK SEWER AND MANHOLE
- SANITARY FORCEMAIN
- SANITARY CATCHMENT AREA
- ORIGINAL GROUND OBVERT
- |      |             |
|------|-------------|
| 3.25 | AREA (ha)   |
| 56   | POPULATION  |
| 2    | MANHOLE No. |
- |          |                      |
|----------|----------------------|
| 3.25     | AREA (ha)            |
| 56       | POPULATION           |
| 2        | MANHOLE No.          |
| 3.2 INST | INST (INDUSTRIAL) ha |
| 3.2 INST | COM (COMMERCIAL) ha  |
- \* EQUIVALENT AREA (17.7 l/s ALLOWABLE PEAK FLOW UNDER C of O SEWER USE AGREEMENT)



SUBJECT PROPERTY

REVISION No.2 MARCH, 2005

**CITY OF OTTAWA**  
GLOUCESTER EUC INFRASTRUCTURE  
SERVICING STUDY UPDATE

**SANITARY SEWER SYSTEM**

Scale: 0 40 80 120 200m

Drawn By: E.C. Date: 04.10.20 Revision: 2

SAN