

LOT 27 AND PART OF LOT 26 REGISTERED PLAN 290559 CITY OF OTTAWA FARLEY, SMITH & DENIS SURVEYING LTD. 2021

Scale 1: 150 0 1.5 3 6 9 12 15 metres

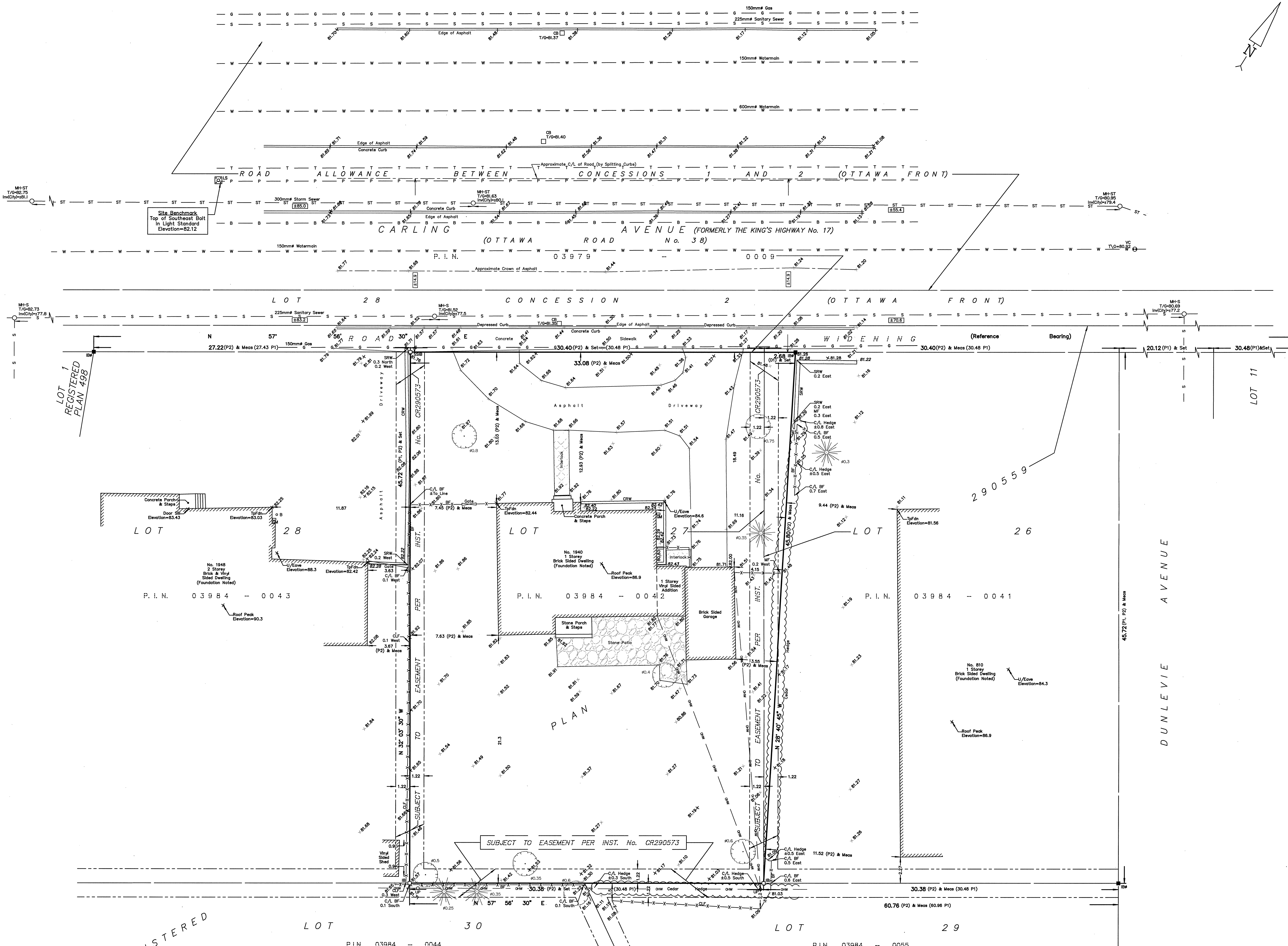
Metric Note Distances and coordinates on this plan are in metres and can be converted to feet by dividing by 0.3048.

Bearing Note Bearings are astronomic and are referred to the southerly limit of Carling Avenue having a bearing of N 57° 56' 30" E as shown on a plan by (1692) dated January 4, 2007 (File No. 461-06).

Elevation Notes 1. Elevations shown are geodetic and are referred to Geodetic Datum CGVD-1928-1978. 2. It is the responsibility of the user of this information to verify that the job benchmark has not been altered or disturbed and that its relative elevation and description agrees with the information shown on this drawing.

Utility Notes 1. This drawing cannot be accepted as acknowledging all of the utilities and it will be the responsibility of the user to contact the respective utility authorities for confirmation. 2. Only visible surface utilities were located. 3. Underground utility data derived from City of Ottawa utility sheet reference: F-02-35, 6030p8p03 & A19g-4. 4. Sanitary and storm sewer grades and inverts were compiled from: City of Ottawa Utility Sheets. 5. A field location of underground plant by the pertinent utility authority is mandatory before any work involving breaking ground, probing, excavating etc.

Notes & Legend Denotes Survey Monument Planted, Survey Monument Found, Standard Iron Bar, Short Standard Iron Bar, Iron Bar, Round Iron Bar, Witness, Measured, Registered Plan 290559, Plan by (1692) dated January 4, 2007 (File No. 461-06), Inst N574871, Maintenance Hole (Storm), Maintenance Hole (Sanitary), Valve Chamber (Watermain), Underground Storm Sewer, Underground Sanitary Sewer, Underground Water, Underground Power, Underground Bell, Underground Traffic, Overhead Wires, Utility Pole, Catch Basin, Light Standard, Gas Meter, Bollard, Diameter, Chain Link Fence, Board Fence, Metal Fence, Concrete Retaining Wall, Stone Retaining Wall, Invert from City of Ottawa Utility Sheets, Top of Grate, Underside of Eave, Top of Foundation, Centreline, Location of Elevations, Top of Concrete Curb Elevation, Property Line, Deciduous Tree, Coniferous Tree.



REGISTERED

Surveyor's Certificate I certify that: 1. This survey and plan are correct and in accordance with the Survey Act, the Surveyors Act and the Regulations made under them. 2. The survey was completed on the 22nd day of April, 2021. Date April 29/21 Emad Alrefaai Ontario Land Surveyor

FARLEY, SMITH & DENIS SURVEYING LTD. ONTARIO LAND SURVEYORS CANADA LAND SURVEYORS 190 COLONNADE ROAD, OTTAWA, ONTARIO K2E 7J5 TEL: (613) 727-8226 FAX: (613) 727-1826

WARNING NO PERSON MAY COPY, REPRODUCE, DISTRIBUTE OR ALTER THIS PLAN IN WHOLE OR IN PART WITHOUT THE WRITTEN PERMISSION OF FARLEY, SMITH & DENIS SURVEYING LTD. © FARLEY, SMITH & DENIS SURVEYING LTD., 2021.