

**JOHN SEVIGNY C.E.T.**  
**MANAGER (A), DEVELOPMENT REVIEW EAST**  
**PLANNING, DEVELOPMENT & BUILDING SERVICES**  
**DEPARTMENT, CITY OF OTTAWA**

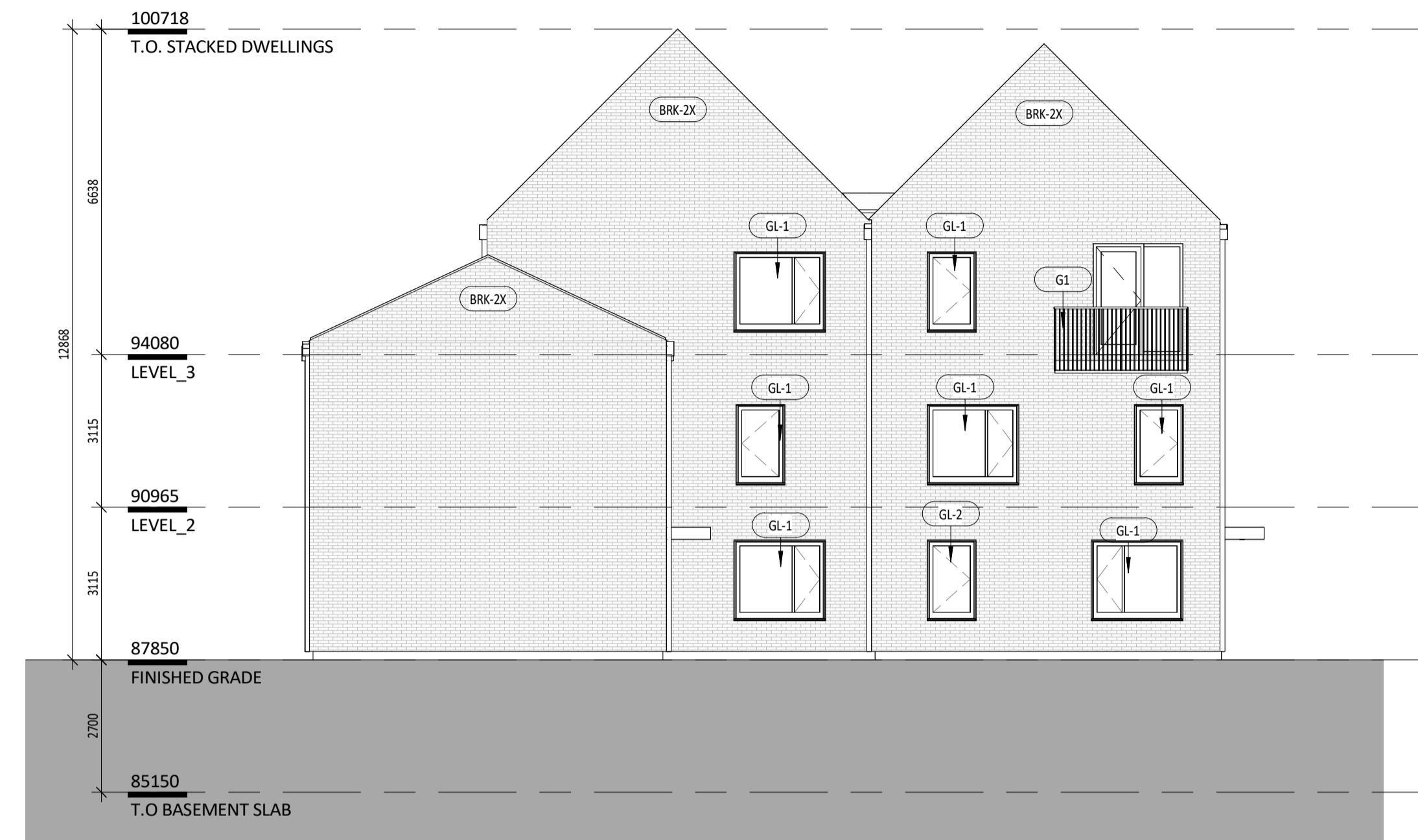
**APPROVED**  
 By sevignyjo at 9:27 am, May 27, 2025

Copyright is that of the Architect.  
 Any version of this drawing reproduced by any means from any media without prior written approval of the Architect is to be read for information only.  
 The Architect is not liable for any loss or distortion of information resulting from subsequent reproduction of the original drawing.

- GENERAL NOTES:**
- Drawings are not to be scaled. Contractor will verify all existing conditions and dimensions required to perform the Work and will report any discrepancies with the Contract Documents to the Architect before commencing work.
  - The Architectural Drawings are to be read in conjunction with all other Contract Documents including the Project Manuals and the Structural, Mechanical and Electrical Drawings. In cases of difference between the Consultant's documents with respect to the quantity, sizes or scope of work, the greater shall apply.
  - Positions of exposed or finished Mechanical or Electrical devices, fittings and fixtures are indicated on the Architectural Drawings. Locations shown on the Architectural Drawings shall govern over Mechanical and Electrical Drawings. Mechanical and Electrical items not clearly located will be located as directed by the Architect.
  - Dimensions indicated are taken between the faces of finished surfaces unless otherwise noted.
  - The architect has not been retained for supervision of construction and assumes no responsibility for means, methods and techniques of construction.
  - These documents are not to be used for construction unless specifically noted for such purpose.



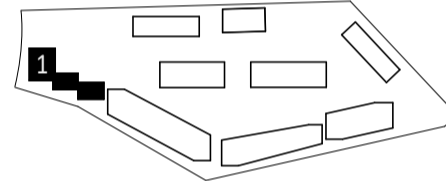
**1** BLOCK 1 - NORTH ELEVATION - SPA  
 1 : 100



**2** BLOCK 1 - EAST ELEVATION - SPA  
 1 : 100

**LEGEND**

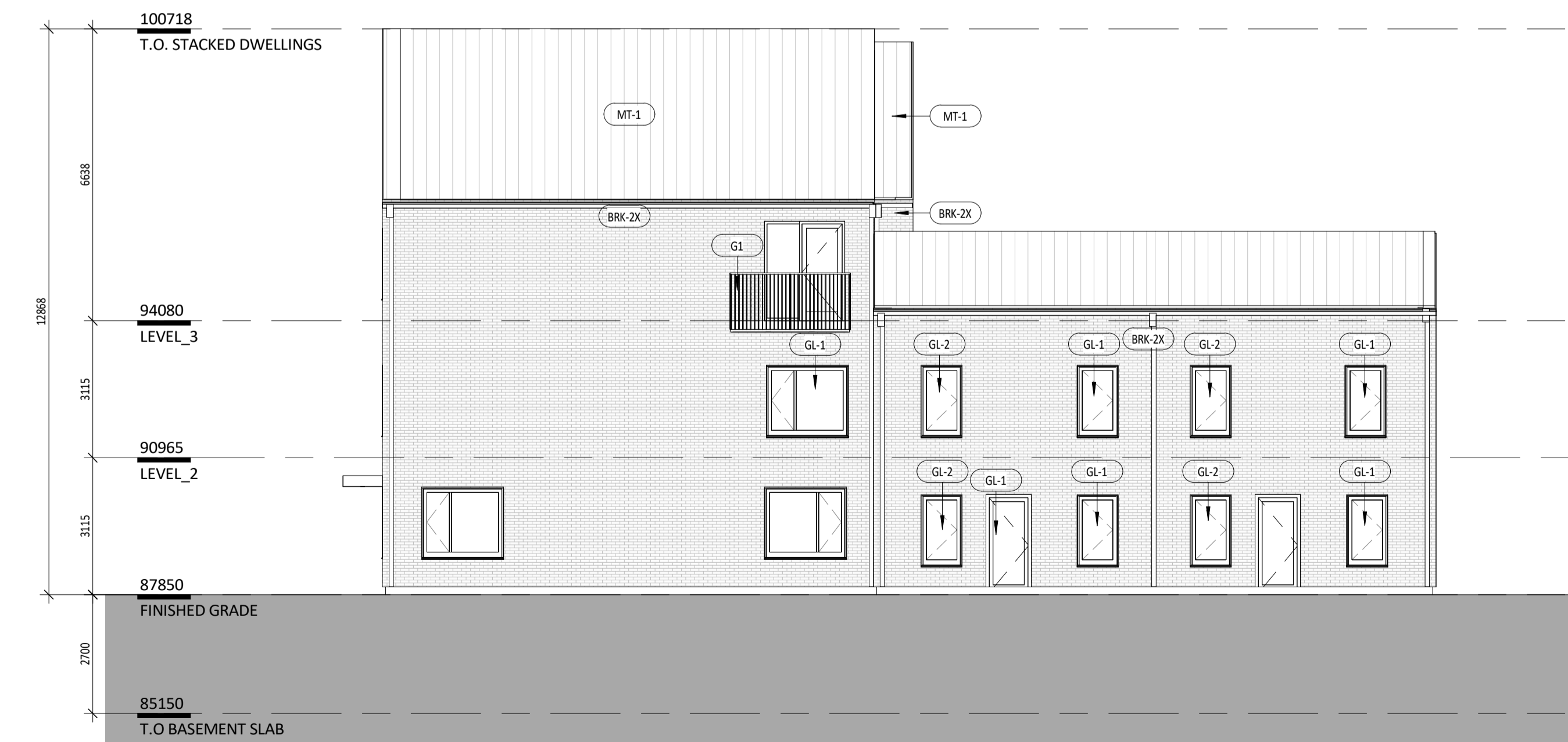
BRK-2X	MASONRY VENEER (SEE SPEC.)
WD-2A	EXTERIOR GRADE WOOD CLADDING (SEE SPEC.)
MT-1	STANDING SEAM METAL ROOF (SEE SPEC.)
GL-1	CLEAR GLAZING (SEE SPEC.)
GL-1a	TEMPERED CLEAR GLAZING (SEE SPEC.)
GL-2	FROSTED PRIVACY GLAZING (SEE SPEC.)
G-1	PAINTED METAL BALCONY PICKET GUARD RAIL
PT-4	PAINT (BLACK)
- - - -	BRICK LEDGE ANCHORED TO STRUCTURE (SEE DETAILS)
- - - -	SCHEDULED LOOSE LINTEL (SEE STRUCT.)
- - - -	TYP. VERTICAL MASONRY MOVEMENT JOINT



**KEY PLAN**

7	05/16/25	RE-ISSUED FOR SPA 6
6	02/28/25	RE-ISSUED FOR SPA 5
5	11/06/24	RE-ISSUED FOR 28A/SPA
4	06/02/23	RE-ISSUED FOR 28A/SPA
3	02/24/23	RE-ISSUED FOR 28A/SPA
2	09/21/22	RE-ISSUED FOR 28A/SPA
1	12/15/21	ISSUED FOR 28A/SPA

Rev. Date Issued



**3** BLOCK 1 - SOUTH ELEVATION - SPA  
 1 : 100



**4** BLOCK 1 - WEST ELEVATION - SPA  
 1 : 100

**KPMB Architects**  
 351 King St E, Suite 1200  
 Toronto, ON, Canada M5A 0L6  
 416.977.5104

**Kindred Works**  
**QUEENSWOOD COMMONS**

360 Kennedy Lane East, Ottawa Ontario

Project No. 2103  
 Scale 1 : 100  
 Plot Date 05/16/25

**BLOCK 1 - ELEVATIONS**

**JOHN SEVIGNY C.E.T.**  
**MANAGER (A), DEVELOPMENT REVIEW EAST**  
**PLANNING, DEVELOPMENT & BUILDING SERVICES**  
**DEPARTMENT, CITY OF OTTAWA**

**APPROVED**  
 By sevignyjo at 9:27 am, May 27, 2025



**1** BLOCK 2 - NORTH ELEVATION - SPA  
 1:100



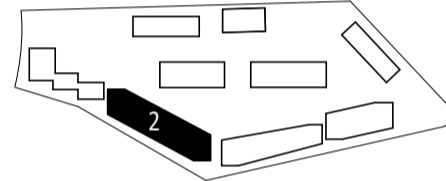
**2** BLOCK 2 - SOUTH ELEVATION - SPA  
 1:100

Copyright is that of the Architect. Any version of this drawing reproduced by any means from any media without prior written approval of the Architect is to be read for information only. The Architect is not liable for any loss or distortion of information resulting from subsequent reproduction of the original drawing.

- GENERAL NOTES:**
- Drawings are not to be scaled. Contractor will verify all existing conditions and dimensions required to perform the Work and will report any discrepancies with the Contract Documents to the Architect before commencing work.
  - The Architectural Drawings are to be read in conjunction with all other Contract Documents including the Project Manuals and the Structural, Mechanical and Electrical Drawings. In cases of difference between the Consultant's documents with respect to the quantity, sizes or scope of work, the greater shall apply.
  - Positions of exposed or finished Mechanical or Electrical devices, fittings and fixtures are indicated on the Architectural Drawings. Locations shown on the Architectural Drawings shall govern over Mechanical and Electrical Drawings. Mechanical and Electrical items not clearly located will be located as directed by the Architect.
  - Dimensions indicated are taken between the faces of finished surfaces unless otherwise noted.
  - The architect has not been retained for supervision of construction and assumes no responsibility for means, methods and techniques of construction.
  - These documents are not to be used for construction unless specifically noted for such purpose.

**LEGEND**

BRK-2X	MASONRY VENEER (SEE SPEC.)
WD-2A	EXTERIOR GRADE WOOD CLADDING (SEE SPEC.)
MT-1	STANDING SEAM METAL ROOF (SEE SPEC.)
GL-1	CLEAR GLAZING (SEE SPEC.)
GL-1a	TEMPERED CLEAR GLAZING (SEE SPEC.)
GL-2	FROSTED PRIVACY GLAZING (SEE SPEC.)
G-1	PAINTED METAL BALCONY PICKET GUARD RAIL
PT-4	PAINT (BLACK)
- - - - -	BRICK LEDGE ANCHORED TO STRUCTURE (SEE DETAILS)
- - - - -	SCHEDULED LOOSE LINTEL (SEE STRUCT.)
- - - - -	TYP. VERTICAL MASONRY MOVEMENT JOINT



**KEY PLAN**

Rev.	Date	Issued
7	05/16/25	RE-ISSUED FOR SPA 6
6	05/28/25	RE-ISSUED FOR SPA 5
5	11/06/24	RE-ISSUED FOR 28A/SPA
4	06/02/23	RE-ISSUED FOR 28A/SPA
3	03/24/23	RE-ISSUED FOR 28A/SPA
2	09/21/22	RE-ISSUED FOR 28A/SPA
1	12/15/21	ISSUED FOR 28A/SPA

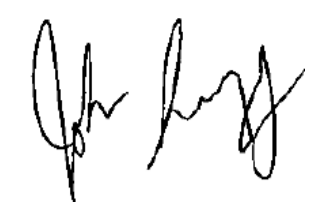
**KPMB Architects**  
 351 King St E, Suite 1200  
 Toronto, ON, Canada M5A 0L6  
 416.977.5104

**Kindred Works**  
**QUEENSWOOD COMMONS**

360 Kennedy Lane East, Ottawa Ontario

Project No. 2103  
 Scale 1:100  
 Plot Date 05/16/25

**BLOCK 2 - NORTH & SOUTH ELEVATIONS**

  
**JOHN SEVIGNY C.E.T.**  
**MANAGER (A), DEVELOPMENT REVIEW EAST**  
**PLANNING, DEVELOPMENT & BUILDING SERVICES**  
**DEPARTMENT, CITY OF OTTAWA**

**APPROVED**  
 By sevignyjo at 9:27 am, May 27, 2025

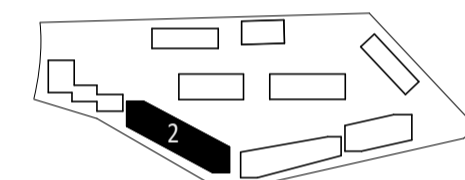
Copyright is that of the Architect. Any version of this drawing reproduced by any means from any media without prior written approval of the Architect is to be read for information only. The Architect is not liable for any loss or distortion of information resulting from subsequent reproduction of the original drawing.

- GENERAL NOTES:**
- Drawings are not to be scaled. Contractor will verify all existing conditions and dimensions required to perform the Work and will report any discrepancies with the Contract Documents to the Architect before commencing work.
  - The Architectural Drawings are to be read in conjunction with all other Contract Documents including the Project Manuals and the Structural, Mechanical and Electrical Drawings. In cases of difference between the Consultant's documents with respect to the quantity, size or scope of work, the greater shall apply.
  - Positions of exposed or finished Mechanical or Electrical devices, fittings and fixtures are indicated on the Architectural Drawings. Locations shown on the Architectural Drawings shall govern over Mechanical and Electrical Drawings. Mechanical and Electrical items not clearly located will be located as directed by the Architect.
  - Dimensions indicated are taken between the faces of finished surfaces unless otherwise noted.
  - The architect has not been retained for supervision of construction and assumes no responsibility for means, methods and techniques of construction.
  - These documents are not to be used for construction unless specifically noted for such purpose.



**LEGEND**

BRK-2X	MASONRY VENEER (SEE SPEC.)
WD-2A	EXTERIOR GRADE WOOD CLADDING (SEE SPEC.)
MT-1	STANDING SEAM METAL ROOF (SEE SPEC.)
GL-1	CLEAR GLAZING (SEE SPEC.)
GL-1a	TEMPERED CLEAR GLAZING (SEE SPEC.)
GL-2	FROSTED PRIVACY GLAZING (SEE SPEC.)
G-1	PAINTED METAL BALCONY PICKET GUARD RAIL
PT-4	PAINT (BLACK)
- - - -	BRICK LEDGE ANCHORED TO STRUCTURE (SEE DETAILS)
- - - -	SCHEDULED LOOSE LINTEL (SEE STRUCT.)
- - - -	TYP. VERTICAL MASONRY MOVEMENT JOINT



**1** BLOCK 2 - EAST ELEVATION - SPA  
1:100

**KEY PLAN**

7	05/16/25	RE ISSUED FOR SPA 6
6	02/28/25	RE ISSUED FOR SPA 5
5	11/06/24	RE ISSUED FOR 28A/SPA
4	06/02/23	RE ISSUED FOR 28A/SPA
3	03/24/23	RE ISSUED FOR 28A/SPA
2	09/21/22	RE ISSUED FOR 28A/SPA
1	12/15/21	ISSUED FOR 28A/SPA

Rev. Date Issued



**2** BLOCK 2 - WEST ELEVATION - SPA  
1:100

**KPMB Architects**  
 351 King St E, Suite 1200  
 Toronto, ON, Canada M5A 0L6  
 416.977.5104

Kindred Works  
**QUEENSWOOD COMMONS**

360 Kennedy Lane East, Ottawa Ontario

Project No. 2103  
 Scale 1:100  
 Plot Date 05/16/25

**BLOCK 2 - EAST & WEST ELEVATIONS**

**JOHN SEVIGNY C.E.T.**  
**MANAGER (A), DEVELOPMENT REVIEW EAST**  
**PLANNING, DEVELOPMENT & BUILDING SERVICES**  
**DEPARTMENT, CITY OF OTTAWA**

**APPROVED**  
 By sevignyjo at 9:27 am, May 27, 2025

Copyright is that of the Architect.  
 Any version of this drawing reproduced by any means from any media without prior written approval of the Architect is to be read for information only.  
 The Architect is not liable for any loss or distortion of information resulting from subsequent reproduction of the original drawing.

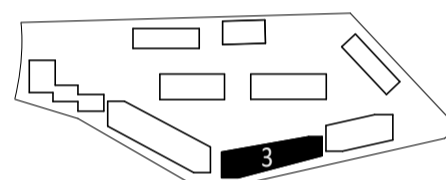
- GENERAL NOTES:**
- Drawings are not to be scaled. Contractor will verify all existing conditions and dimensions required to perform the Work and will report any discrepancies with the Contract Documents to the Architect before commencing work.
  - The Architectural Drawings are to be read in conjunction with all other Contract Documents including the Project Manuals and the Structural, Mechanical and Electrical Drawings. In cases of difference between the Consultant's documents with respect to the quantity, sizes or scope of work, the greater shall apply.
  - Positions of exposed or finished Mechanical or Electrical devices, fittings and fixtures are indicated on the Architectural Drawings. Locations shown on the Architectural Drawings shall govern over Mechanical and Electrical Drawings. Mechanical and Electrical items not clearly located will be located as directed by the Architect.
  - Dimensions indicated are taken between the faces of finished surfaces unless otherwise noted.
  - The architect has not been retained for supervision of construction and assumes no responsibility for means, methods and techniques of construction.
  - These documents are not to be used for construction unless specifically noted for such purpose.



**1** BLOCK 3 - NORTH ELEVATION - SPA  
 1 : 100

**LEGEND**

BRK-2X	MASONRY VENEER (SEE SPEC.)
WD-2A	EXTERIOR GRADE WOOD CLADDING (SEE SPEC.)
MT-1	STANDING SEAM METAL ROOF (SEE SPEC.)
GL-1	CLEAR GLAZING (SEE SPEC.)
GL-1a	TEMPERED CLEAR GLAZING (SEE SPEC.)
GL-2	FROSTED PRIVACY GLAZING (SEE SPEC.)
G-1	PAINTED METAL BALCONY PICKET GUARD RAIL
PT-4	PAINT (BLACK)
- - - - -	BRICK LEDGE ANCHORED TO STRUCTURE (SEE DETAILS)
- - - - -	SCHEDULED LOOSE LINTEL (SEE STRUCT.)
- - - - -	TYP. VERTICAL MASONRY MOVEMENT JOINT



**KEY PLAN**

7	05/16/25	RE-ISSUED FOR SPA 6
6	02/28/25	RE-ISSUED FOR SPA 5
5	11/06/24	RE-ISSUED FOR 28A/SPA
4	06/02/23	RE-ISSUED FOR 28A/SPA
3	02/24/23	RE-ISSUED FOR 28A/SPA
2	09/21/22	RE-ISSUED FOR 28A/SPA
1	12/15/21	ISSUED FOR 28A/SPA

Rev. Date Issued



**2** BLOCK 3 - SOUTH ELEVATION - SPA  
 1 : 100

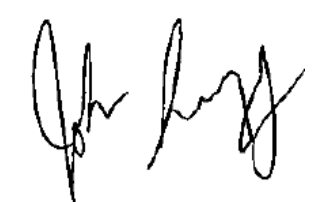
**KPMB Architects**  
 351 King St E, Suite 1200  
 Toronto, ON, Canada M5A 0L6  
 416.977.5104

**Kindred Works**  
**QUEENSWOOD COMMONS**

360 Kennedy Lane East, Ottawa Ontario

Project No. 2103  
 Scale 1 : 100  
 Plot Date 05/16/25

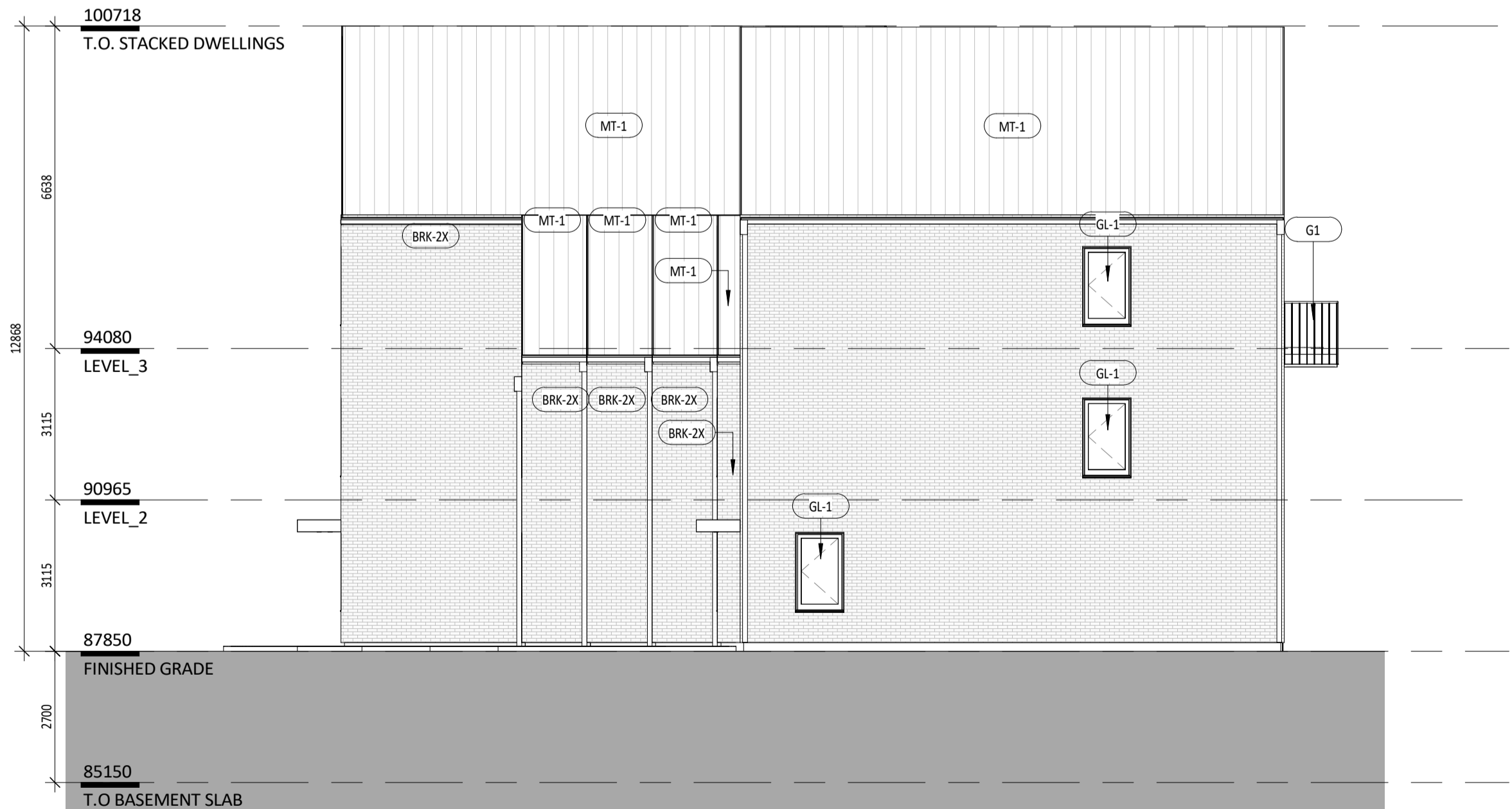
**BLOCK 3 - NORTH & SOUTH ELEVATIONS**

  
**JOHN SEVIGNY C.E.T.**  
**MANAGER (A), DEVELOPMENT REVIEW EAST**  
**PLANNING, DEVELOPMENT & BUILDING SERVICES**  
**DEPARTMENT, CITY OF OTTAWA**

**APPROVED**  
 By sevignyo at 9:27 am, May 27, 2025



**1** BLOCK 3 - EAST ELEVATION - SPA  
1:100

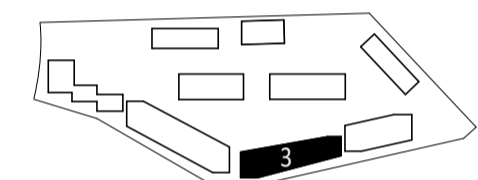


**2** BLOCK 3 - WEST ELEVATIONS - SPA  
1:100

Copyright is that of the Architect. Any version of this drawing reproduced by any means from any media without prior written approval of the Architect is to be read for information only. The Architect is not liable for any loss or distortion of information resulting from subsequent reproduction of the original drawing.

- GENERAL NOTES:**
- Drawings are not to be scaled. Contractor will verify all existing conditions and dimensions required to perform the Work and will report any discrepancies with the Contract Documents to the Architect before commencing work.
  - The Architectural Drawings are to be read in conjunction with all other Contract Documents including the Project Manuals and the Structural, Mechanical and Electrical Drawings. In cases of difference between the Consultant's documents with respect to the quantity, sizes or scope of work, the greater shall apply.
  - Positions of exposed or finished Mechanical or Electrical devices, fittings and fixtures are indicated on the Architectural Drawings. Locations shown on the Architectural Drawings shall govern over Mechanical and Electrical Drawings. Mechanical and Electrical items not clearly located will be located as directed by the Architect.
  - Dimensions indicated are taken between the faces of finished surfaces unless otherwise noted.
  - The architect has not been retained for supervision of construction and assumes no responsibility for means, methods and techniques of construction.
  - These documents are not to be used for construction unless specifically noted for such purpose.

LEGEND	
	MASONRY VENEER (SEE SPEC.)
	EXTERIOR GRADE WOOD CLADDING (SEE SPEC.)
	STANDING SEAM METAL ROOF (SEE SPEC.)
	CLEAR GLAZING (SEE SPEC.)
	TEMPERED CLEAR GLAZING (SEE SPEC.)
	FROSTED PRIVACY GLAZING (SEE SPEC.)
	PAINTED METAL BALCONY PICKET GUARD RAIL
	PAINT (BLACK)
	BRICK LEDGE ANCHORED TO STRUCTURE (SEE DETAILS)
	SCHEDULED LOOSE LINTEL (SEE STRUCT.)
	TYP. VERTICAL MASONRY MOVEMENT JOINT



**KEY PLAN**

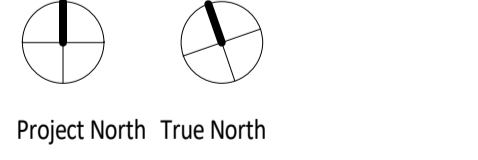
7	05/16/25	RE-ISSUED FOR SPA 6
6	02/28/25	RE-ISSUED FOR SPA 5
5	11/06/24	RE-ISSUED FOR 28A/SPA
4	06/02/23	RE-ISSUED FOR 28A/SPA
3	03/24/23	RE-ISSUED FOR 28A/SPA
2	09/21/22	RE-ISSUED FOR 28A/SPA
1	12/15/21	ISSUED FOR 28A/SPA

Rev. Date Issued

**KPMB Architects**  
351 King St E, Suite 1200  
Toronto, ON, Canada M5A 0L6  
416.977.5104

Kindred Works  
**QUEENSWOOD COMMONS**

360 Kennedy Lane East, Ottawa Ontario



Project No. 2103  
Scale 1:100  
Plot Date 05/16/25

**BLOCK 3 - EAST & WEST ELEVATIONS**

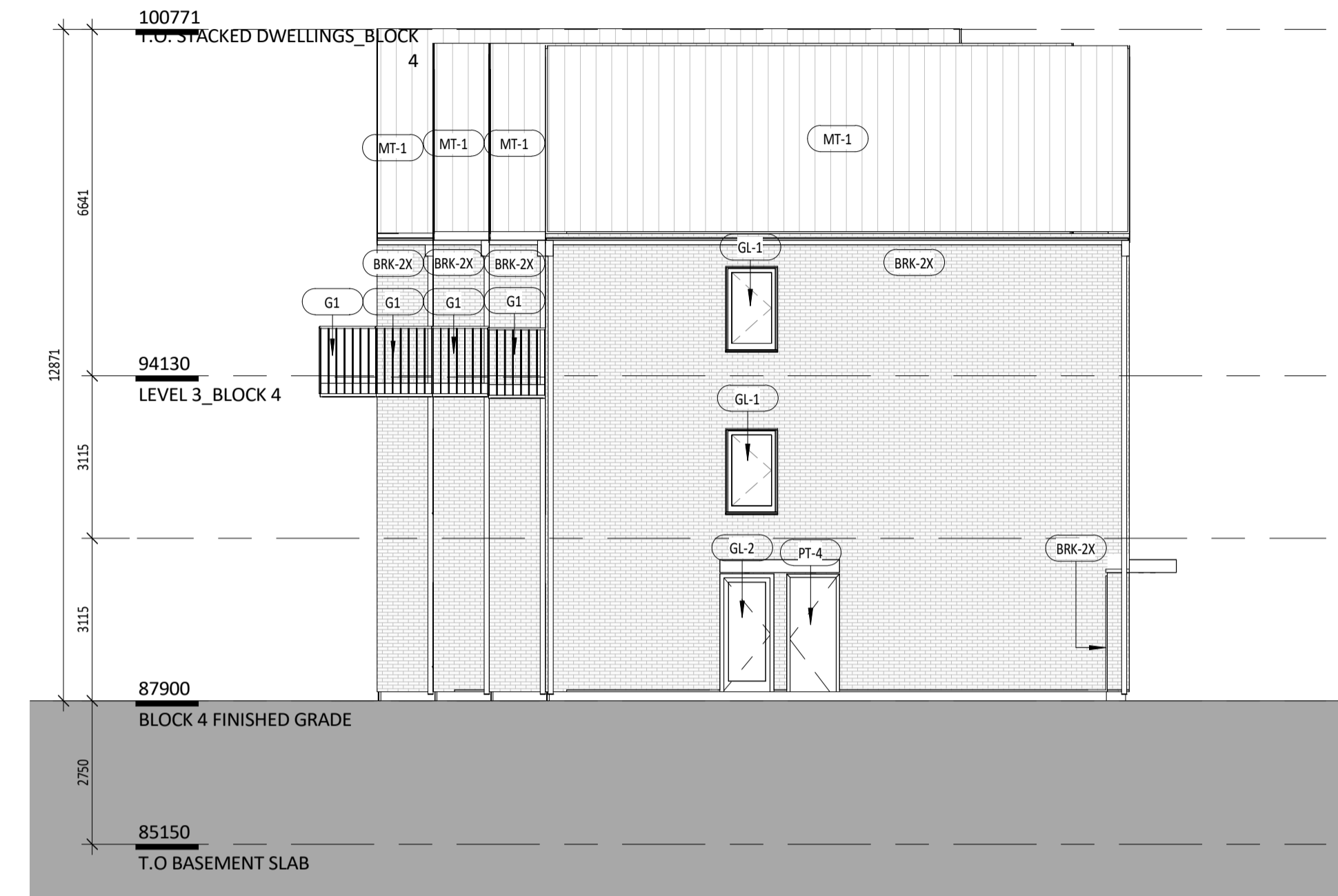
**A5.05Z**

**JOHN SEVIGNY C.E.T.**  
**MANAGER (A), DEVELOPMENT REVIEW EAST**  
**PLANNING, DEVELOPMENT & BUILDING SERVICES**  
**DEPARTMENT, CITY OF OTTAWA**

**APPROVED**  
 By sevignyjo at 9:27 am, May 27, 2025



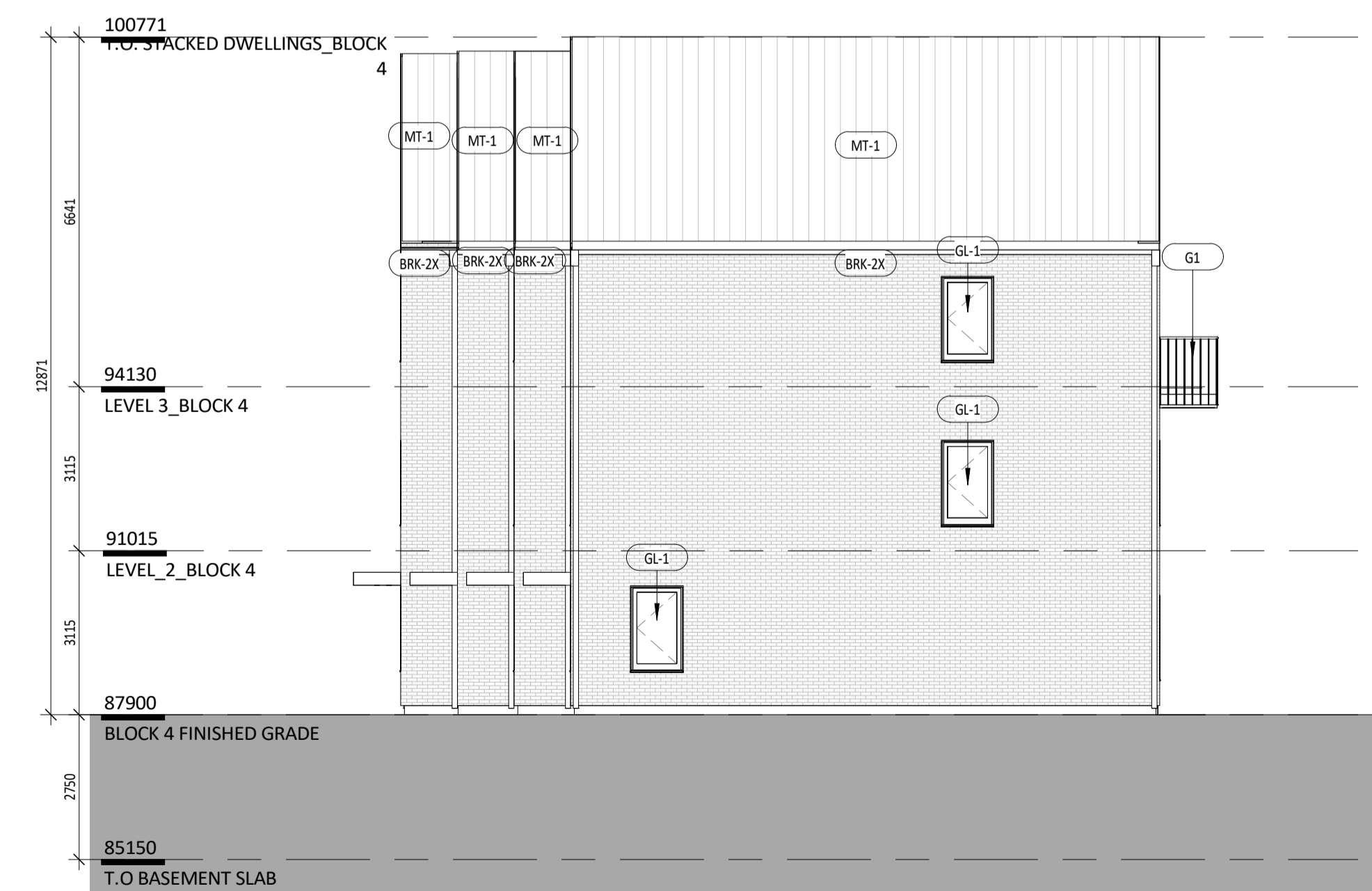
**1** BLOCK 4 - NORTH ELEVATION - SPA  
 1:100



**2** BLOCK 4 - EAST ELEVATION - SPA  
 1:100



**3** BLOCK 4 - SOUTH ELEVATION - SPA  
 1:100



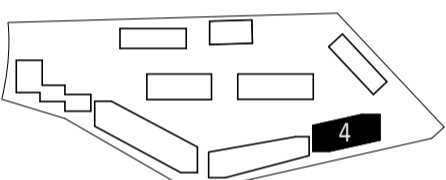
**4** BLOCK 4 - WEST ELEVATION - SPA  
 1:100

Copyright is that of the Architect. Any version of this drawing reproduced by any means from any media without prior written approval of the Architect is to be read for information only. The Architect is not liable for any loss or distortion of information resulting from subsequent reproduction of the original drawing.

- GENERAL NOTES:**
- Drawings are not to be scaled. Contractor will verify all existing conditions and dimensions required to perform the Work and will report any discrepancies with the Contract Documents to the Architect before commencing work.
  - The Architectural Drawings are to be read in conjunction with all other Contract Documents including the Project Manuals and the Structural, Mechanical and Electrical Drawings. In cases of difference between the Consultant's documents with respect to the quantity, sizes or scope of work, the greater shall apply.
  - Positions of exposed or finished Mechanical or Electrical devices, fittings and fixtures are indicated on the Architectural Drawings. Locations shown on the Architectural Drawings shall govern over Mechanical and Electrical Drawings. Mechanical and Electrical items not clearly located will be located as directed by the Architect.
  - Dimensions indicated are taken between the faces of finished surfaces unless otherwise noted.
  - The architect has not been retained for supervision of construction and assumes no responsibility for means, methods and techniques of construction.
  - These documents are not to be used for construction unless specifically noted for such purpose.

**LEGEND**

BRK-2X	MASONRY VENEER (SEE SPEC.)
WD-2A	EXTERIOR GRADE WOOD CLADDING (SEE SPEC.)
MT-1	STANDING SEAM METAL ROOF (SEE SPEC.)
GL-1	CLEAR GLAZING (SEE SPEC.)
GL-1a	TEMPERED CLEAR GLAZING (SEE SPEC.)
GL-2	FROSTED PRIVACY GLAZING (SEE SPEC.)
G-1	PAINTED METAL BALCONY PICKET GUARD RAIL
PT-4	PAINT (BLACK)
- - - - -	BRICK LEDGE ANCHORED TO STRUCTURE (SEE DETAILS)
- - - - -	SCHEDULED LOOSE LINTEL (SEE STRUCT.)
- - - - -	TYP. VERTICAL MASONRY MOVEMENT JOINT



**KEY PLAN**

Rev.	Date	Issued
7	05/16/25	RE-ISSUED FOR SPA 6
6	02/28/25	RE-ISSUED FOR SPA 5
5	11/06/24	RE-ISSUED FOR 28A/SPA
4	06/02/23	RE-ISSUED FOR 28A/SPA
3	03/24/23	RE-ISSUED FOR 28A/SPA
2	09/21/22	RE-ISSUED FOR 28A/SPA
1	12/15/21	ISSUED FOR 28A/SPA

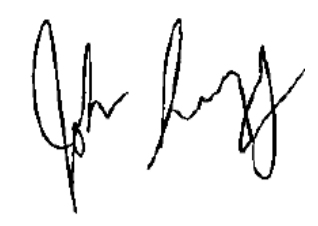
**KPMB Architects**  
 351 King St E, Suite 1200  
 Toronto, ON, Canada M5A 0L6  
 416.977.5104

Kindred Works  
**QUEENSWOOD COMMONS**

360 Kennedy Lane East, Ottawa Ontario

Project No. 2103  
 Scale 1:100  
 Plot Date 05/16/25

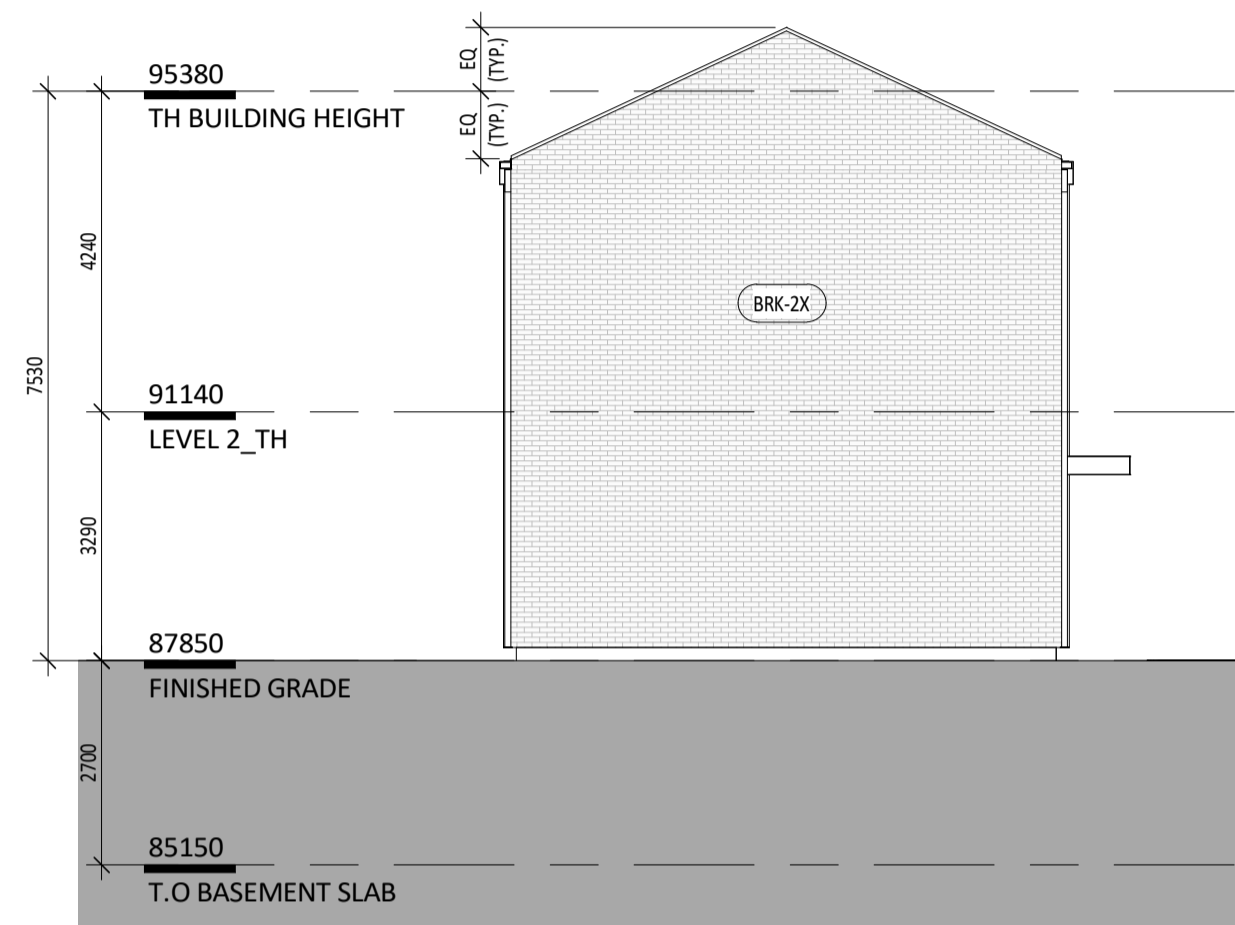
**BLOCK 4 - ELEVATIONS**

  
**JOHN SEVIGNY C.E.T.**  
**MANAGER (A), DEVELOPMENT REVIEW EAST**  
**PLANNING, DEVELOPMENT & BUILDING SERVICES**  
**DEPARTMENT, CITY OF OTTAWA**

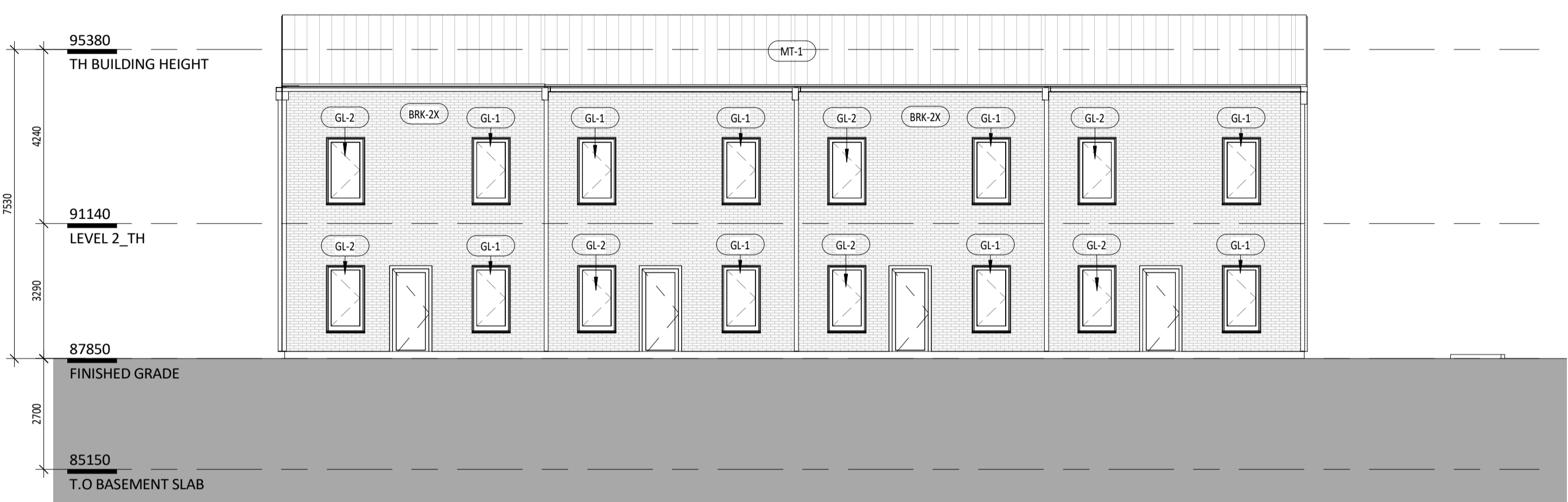
**APPROVED**  
 By sevignyjo at 9:27 am, May 27, 2025

Copyright is that of the Architect. Any version of this drawing reproduced by any means from any media without prior written approval of the Architect is to be read for information only. The Architect is not liable for any loss or distortion of information resulting from subsequent reproduction of the original drawing.

- GENERAL NOTES:**
- Drawings are not to be scaled. Contractor will verify all existing conditions and dimensions required to perform the Work and will report any discrepancies with the Contract Documents to the Architect before commencing work.
  - The Architectural Drawings are to be read in conjunction with all other Contract Documents including the Project Manuals and the Structural, Mechanical and Electrical Drawings. In cases of difference between the Consultant's documents with respect to the quantity, sizes or scope of work, the greater shall apply.
  - Positions of exposed or finished Mechanical or Electrical devices, fittings and fixtures are indicated on the Architectural Drawings. Locations shown on the Architectural Drawings shall govern over Mechanical and Electrical Drawings. Mechanical and Electrical items not clearly located will be located as directed by the Architect.
  - Dimensions indicated are taken between the faces of finished surfaces unless otherwise noted.
  - The architect has not been retained for supervision of construction and assumes no responsibility for means, methods and techniques of construction.
  - These documents are not to be used for construction unless specifically noted for such purpose.



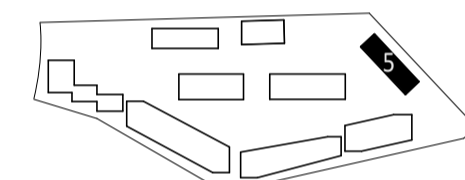
**1** BLOCK 5 - NORTH ELEVATION - SPA  
1:100



**2** BLOCK 5 - EAST ELEVATION - SPA  
1:100

**LEGEND**

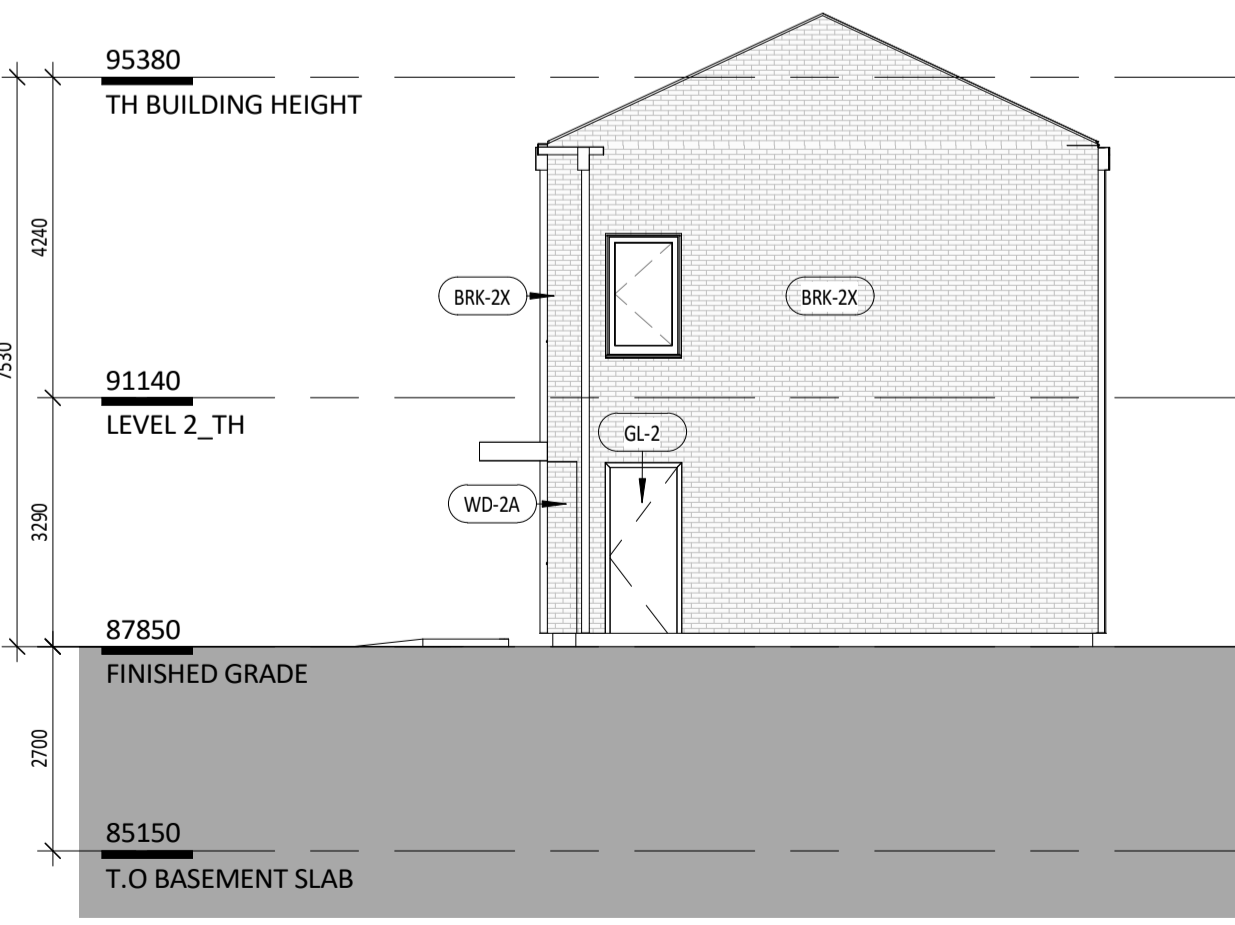
BRK-2X	MASONRY VENEER (SEE SPEC.)
WD-2A	EXTERIOR GRADE WOOD CLADDING (SEE SPEC.)
MT-1	STANDING SEAM METAL ROOF (SEE SPEC.)
GL-1	CLEAR GLAZING (SEE SPEC.)
GL-1a	TEMPERED CLEAR GLAZING (SEE SPEC.)
GL-2	FROSTED PRIVACY GLAZING (SEE SPEC.)
G-1	PAINTED METAL BALCONY PICKET GUARD RAIL
PT-4	PAINT (BLACK)
- - - -	BRICK LEDGE ANCHORED TO STRUCTURE (SEE DETAILS)
- - - -	SCHEDULED LOOSE LINTEL (SEE STRUCT.)
- - - -	TYP. VERTICAL MASONRY MOVEMENT JOINT



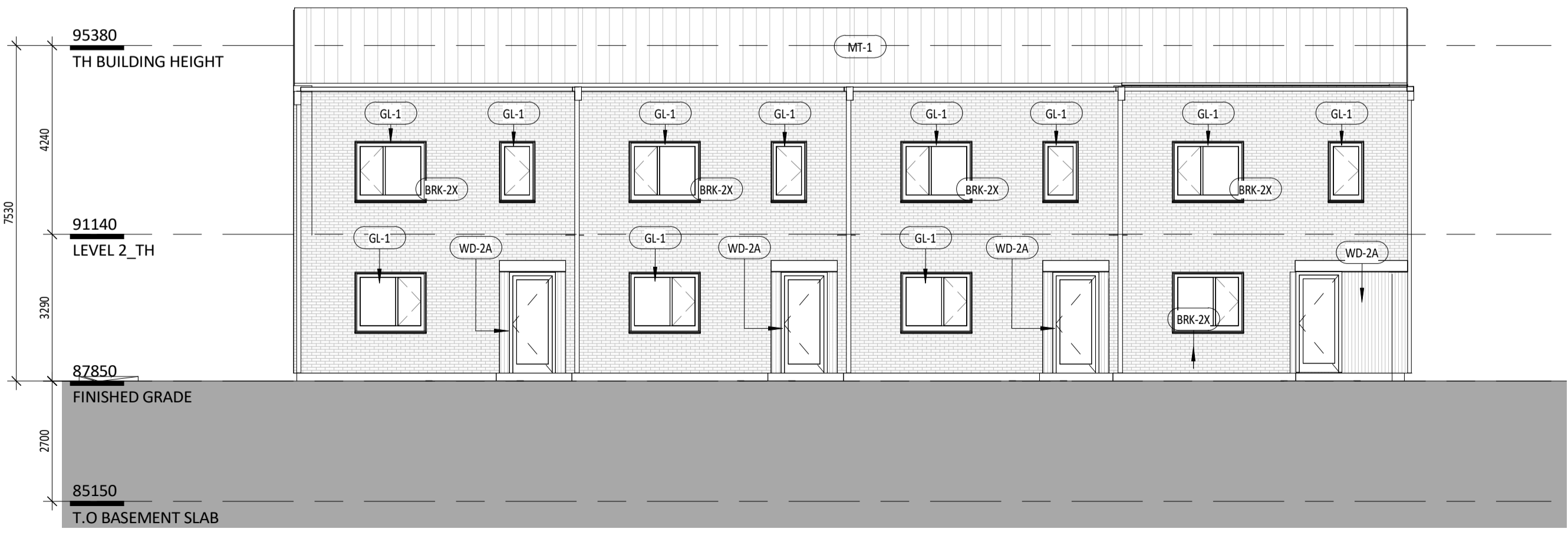
**KEY PLAN**

7	05/16/25	RE-ISSUED FOR SPA 6
6	02/26/25	RE-ISSUED FOR SPA 5
5	11/06/24	RE-ISSUED FOR 28A SPA
4	06/02/23	RE-ISSUED FOR 28A SPA
3	02/24/23	RE-ISSUED FOR 28A SPA
2	09/21/22	RE-ISSUED FOR 28A SPA
1	12/15/21	ISSUED FOR 28A SPA

Rev. Date Issued



**3** BLOCK 5 - SOUTH ELEVATION - SPA  
1:100



**4** BLOCK 5 - WEST ELEVATION - SPA  
1:100

**KPMB Architects**  
 351 King St E, Suite 1200  
 Toronto, ON, Canada M5A 0L6  
 416.977.5104

**Kindred Works**  
**QUEENSWOOD COMMONS**

360 Kennedy Lane East, Ottawa Ontario

Project No. 2103  
 Scale 1:100  
 Plot Date 05/16/25

**BLOCK 5 - ELEVATIONS**

**JOHN SEVIGNY C.E.T.**  
**MANAGER (A), DEVELOPMENT REVIEW EAST**  
**PLANNING, DEVELOPMENT & BUILDING SERVICES**  
**DEPARTMENT, CITY OF OTTAWA**

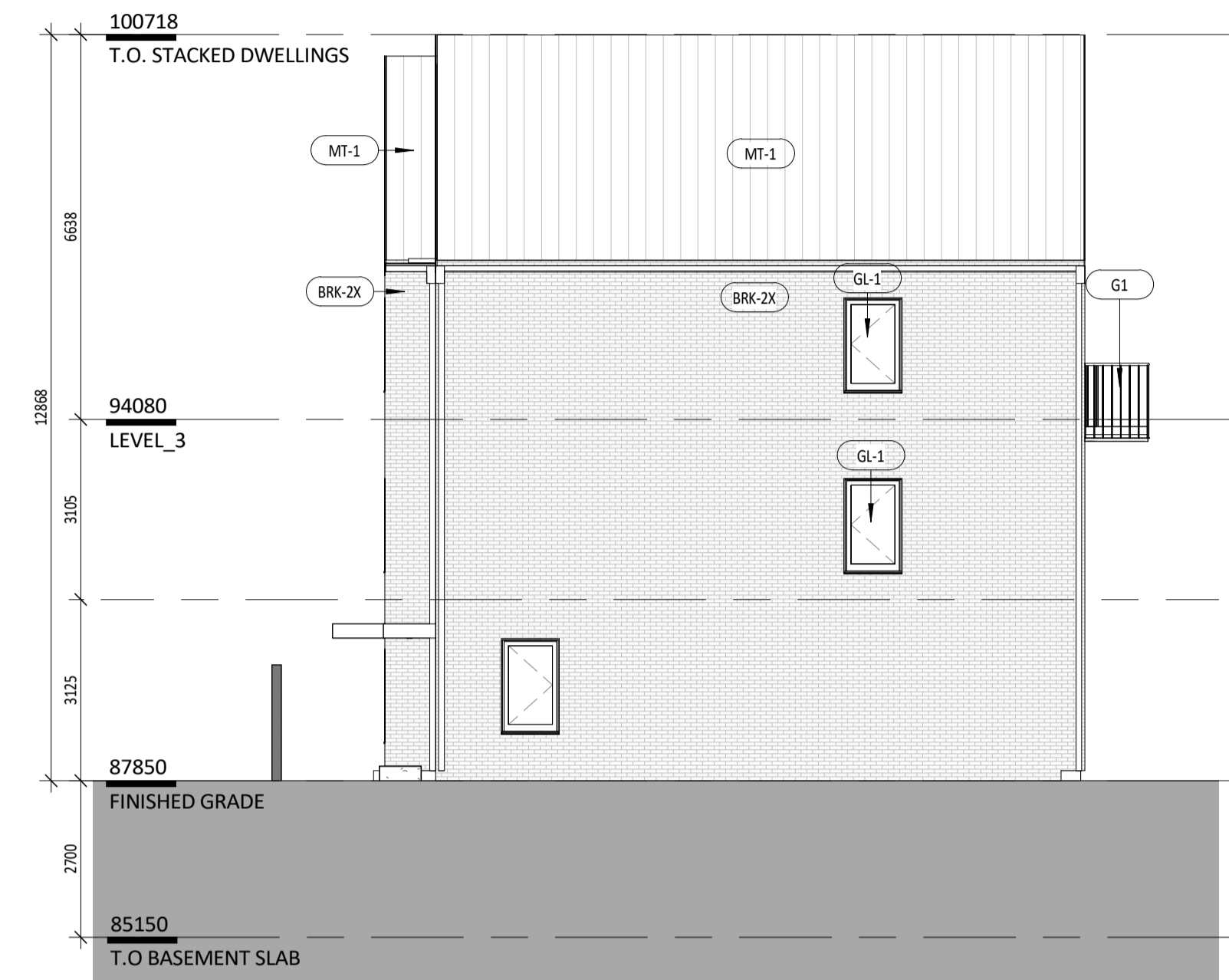
**APPROVED**  
 By sevignyo at 9:27 am, May 27, 2025

Copyright is that of the Architect.  
 Any version of this drawing reproduced by any means from any media without prior written approval of the Architect is to be read for information only.  
 The Architect is not liable for any loss or distortion of information resulting from subsequent reproduction of the original drawing.

- GENERAL NOTES:**
- Drawings are not to be scaled. Contractor will verify all existing conditions and dimensions required to perform the Work and will report any discrepancies with the Contract Documents to the Architect before commencing work.
  - The Architectural Drawings are to be read in conjunction with all other Contract Documents including the Project Manuals and the Structural, Mechanical and Electrical Drawings. In cases of difference between the Consultant's documents with respect to the quantity, sizes or scope of work, the greater shall apply.
  - Positions of exposed or finished Mechanical or Electrical devices, fittings and fixtures are indicated on the Architectural Drawings. Locations shown on the Architectural Drawings shall govern over Mechanical and Electrical Drawings. Mechanical and Electrical items not clearly located will be located as directed by the Architect.
  - Dimensions indicated are taken between the faces of finished surfaces unless otherwise noted.
  - The architect has not been retained for supervision of construction and assumes no responsibility for means, methods and techniques of construction.
  - These documents are not to be used for construction unless specifically noted for such purpose.



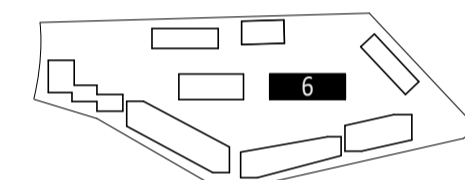
**1** BLOCK 6 - NORTH ELEVATION - SPA  
 1:100



**2** BLOCK 6 - EAST ELEVATION - SPA  
 1:100

**LEGEND**

BRK-2X	MASONRY VENEER (SEE SPEC.)
WD-2A	EXTERIOR GRADE WOOD CLADDING (SEE SPEC.)
MT-1	STANDING SEAM METAL ROOF (SEE SPEC.)
GL-1	CLEAR GLAZING (SEE SPEC.)
GL-1a	TEMPERED CLEAR GLAZING (SEE SPEC.)
GL-2	FROSTED PRIVACY GLAZING (SEE SPEC.)
G-1	PAINTED METAL BALCONY PICKET GUARD RAIL
PT-4	PAINT (BLACK)
- - - -	BRICK LEDGE ANCHORED TO STRUCTURE (SEE DETAILS)
- - - -	SCHEDULED LOOSE LINTEL (SEE STRUCT.)
- - - -	TYP. VERTICAL MASONRY MOVEMENT JOINT

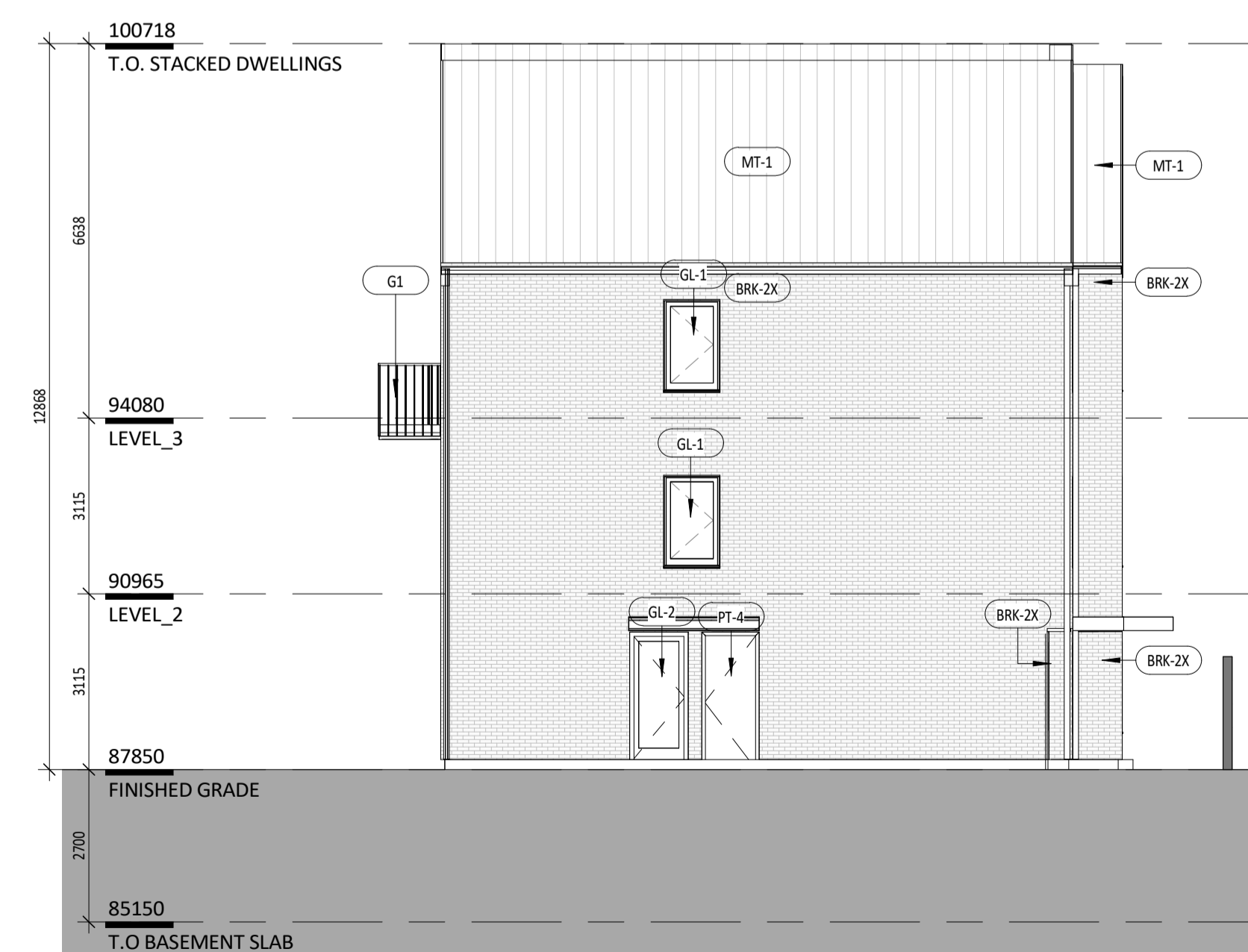


**KEY PLAN**

Rev.	Date	Issued
7	05/16/25	RE-ISSUED FOR SPA 6
6	02/28/25	RE-ISSUED FOR SPA 5
5	11/06/24	RE-ISSUED FOR 28A/SPA
4	06/02/23	RE-ISSUED FOR 28A/SPA
3	03/24/23	RE-ISSUED FOR 28A/SPA
2	09/21/22	RE-ISSUED FOR 28A/SPA
1	12/15/21	ISSUED FOR 28A/SPA



**3** BLOCK 6 - SOUTH ELEVATION - SPA  
 1:100



**4** BLOCK 6 - WEST ELEVATION - SPA  
 1:100

**KPMB Architects**  
 351 King St E, Suite 1200  
 Toronto, ON, Canada M5A 0L6  
 416.977.5104

**Kindred Works**  
**QUEENSWOOD COMMONS**

360 Kennedy Lane East, Ottawa Ontario

Project No. 2103  
 Scale 1:100  
 Plot Date 05/16/25

**BLOCK 6 - ELEVATIONS**



**JOHN SEVIGNY C.E.T.**  
**MANAGER (A), DEVELOPMENT REVIEW EAST**  
**PLANNING, DEVELOPMENT & BUILDING SERVICES**  
**DEPARTMENT, CITY OF OTTAWA**

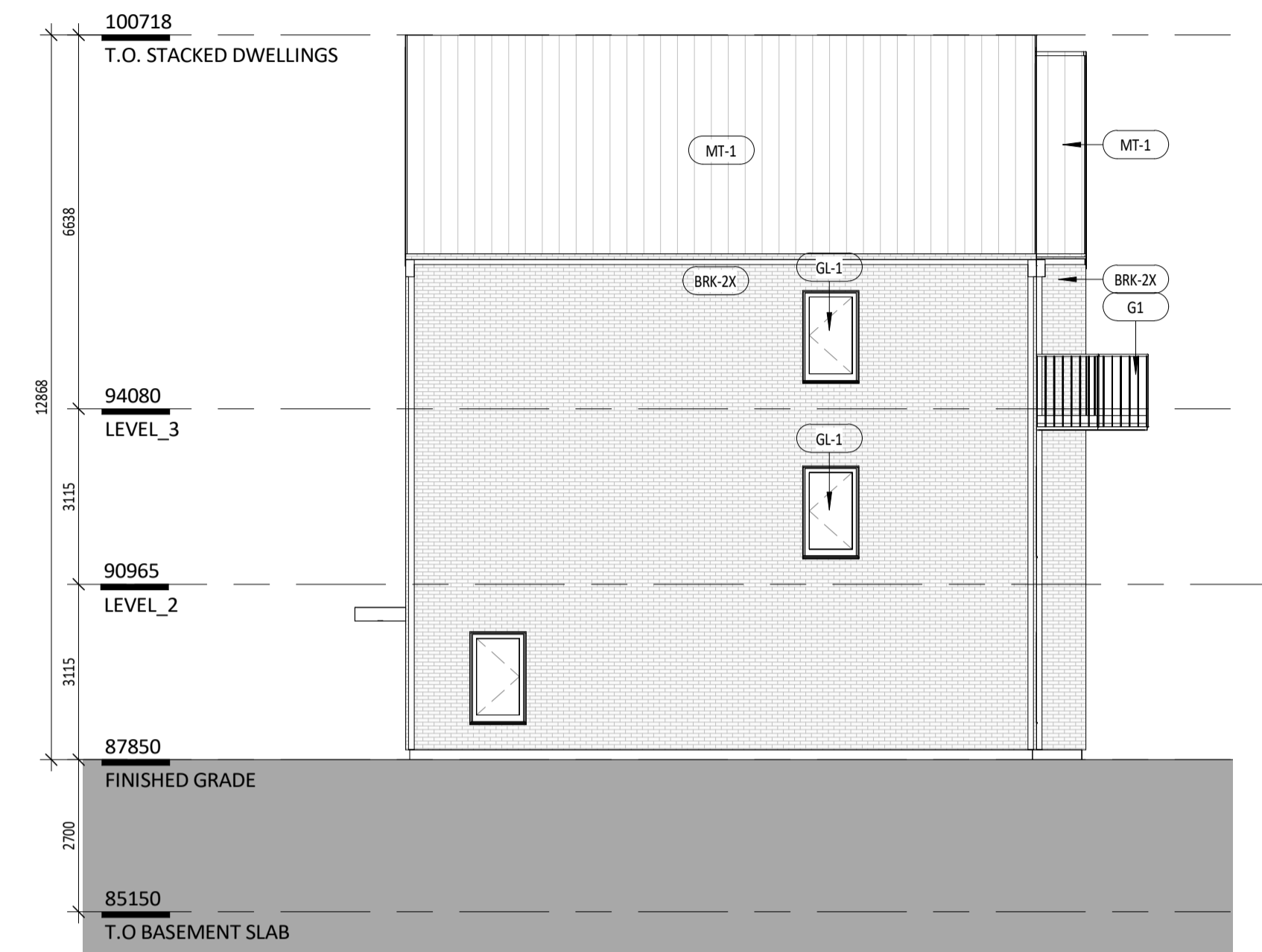
**APPROVED**  
 By sevignyjo at 9:27 am, May 27, 2025

Copyright is that of the Architect.  
 Any version of this drawing reproduced by any means from any media without prior written approval of the Architect is to be read for information only.  
 The Architect is not liable for any loss or distortion of information resulting from subsequent reproduction of the original drawing.

- GENERAL NOTES:**
- Drawings are not to be scaled. Contractor will verify all existing conditions and dimensions required to perform the Work and will report any discrepancies with the Contract Documents to the Architect before commencing work.
  - The Architectural Drawings are to be read in conjunction with all other Contract Documents including the Project Manuals and the Structural, Mechanical and Electrical Drawings. In case of difference between the Consultant's documents with respect to the quantity, size or scope of work, the greater shall apply.
  - Positions of exposed or finished Mechanical or Electrical devices, fittings and fixtures are indicated on the Architectural Drawings. Locations shown on the Architectural Drawings shall govern over Mechanical and Electrical Drawings. Mechanical and Electrical items not clearly located will be located as directed by the Architect.
  - Dimensions indicated are taken between the faces of finished surfaces unless otherwise noted.
  - The architect has not been retained for supervision of construction and assumes no responsibility for means, methods and techniques of construction.
  - These documents are not to be used for construction unless specifically noted for such purpose.



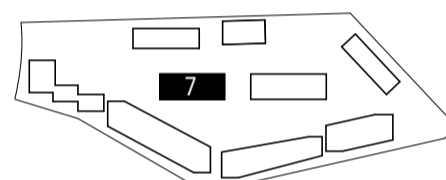
**1** BLOCK 7 - NORTH ELEVATION - SPA  
 1:100



**2** BLOCK 7 - EAST ELEVATION - SPA  
 1:100

**LEGEND**

- BRK-2X MASONRY VENEER (SEE SPEC.)
- WD-2A EXTERIOR GRADE WOOD CLADDING (SEE SPEC.)
- MT-1 STANDING SEAM METAL ROOF (SEE SPEC.)
- GL-1 CLEAR GLAZING (SEE SPEC.)
- GL-1a TEMPERED CLEAR GLAZING (SEE SPEC.)
- GL-2 FROSTED PRIVACY GLAZING (SEE SPEC.)
- G-1 PAINTED METAL BALCONY PICKET GUARD RAIL
- PT-4 PAINT (BLACK)
- BRICK LEDGE ANCHORED TO STRUCTURE (SEE DETAILS)
- SCHEDULED LOOSE LINTEL (SEE STRUCT.)
- TYP. VERTICAL MASONRY MOVEMENT JOINT

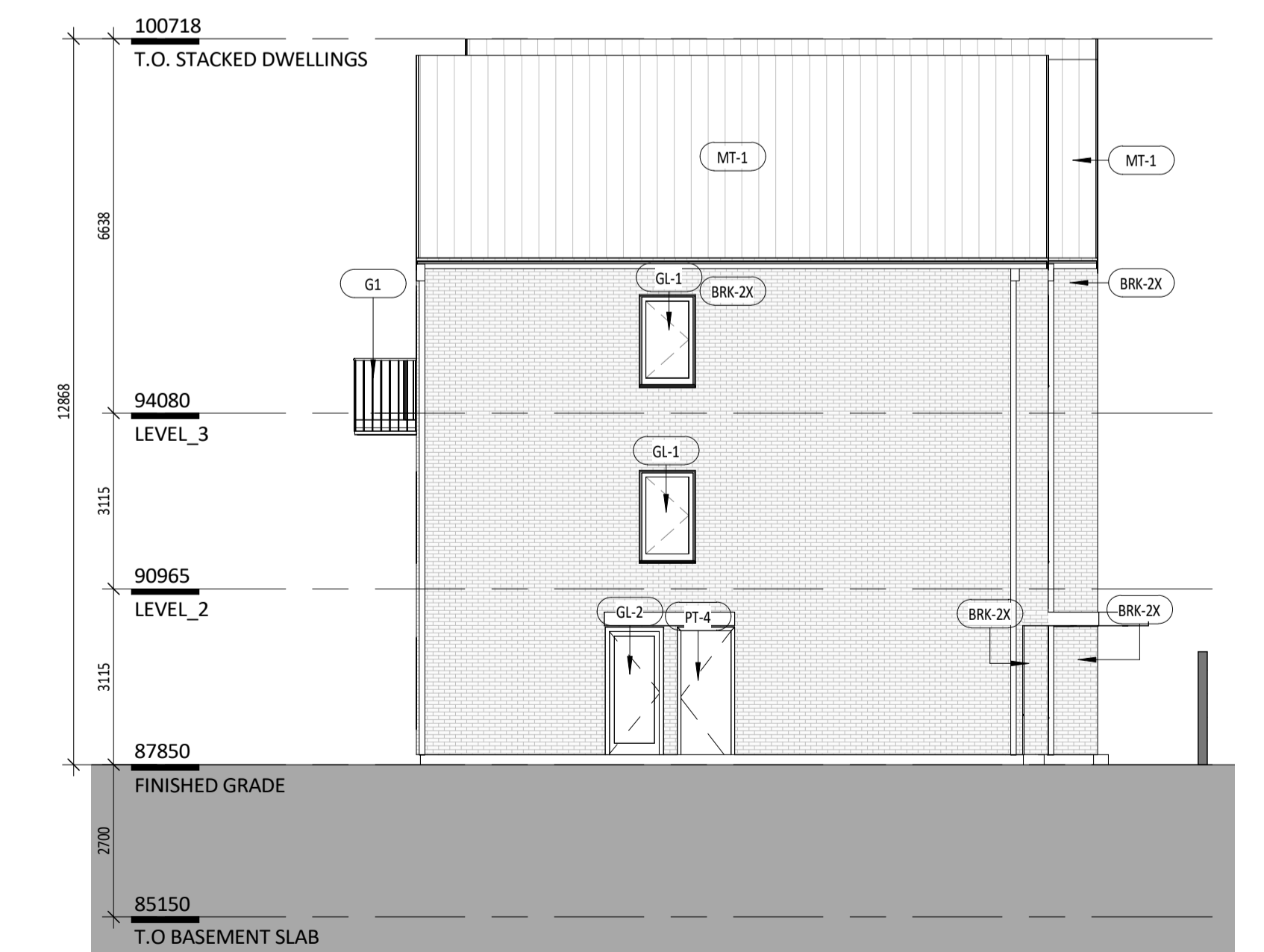


**KEY PLAN**

Rev.	Date	Issued
7	05/16/25	RE-ISSUED FOR SPA 6
6	02/28/25	RE-ISSUED FOR SPA 5
5	11/06/24	RE-ISSUED FOR 28A/SPA
4	06/02/23	RE-ISSUED FOR 28A/SPA
3	03/24/23	RE-ISSUED FOR 28A/SPA
2	09/21/22	RE-ISSUED FOR 28A/SPA
1	12/15/21	ISSUED FOR 28A/SPA



**3** BLOCK 7 - SOUTH ELEVATION - SPA  
 1:100



**4** BLOCK 7 - WEST ELEVATION - SPA  
 1:100

**KPMB Architects**  
 351 King St E, Suite 1200  
 Toronto, ON, Canada M5A 0L6  
 416.977.5104

**Kindred Works**  
**QUEENSWOOD COMMONS**

360 Kennedy Lane East, Ottawa Ontario

Project No. 2103  
 Scale 1:100  
 Plot Date 05/16/25

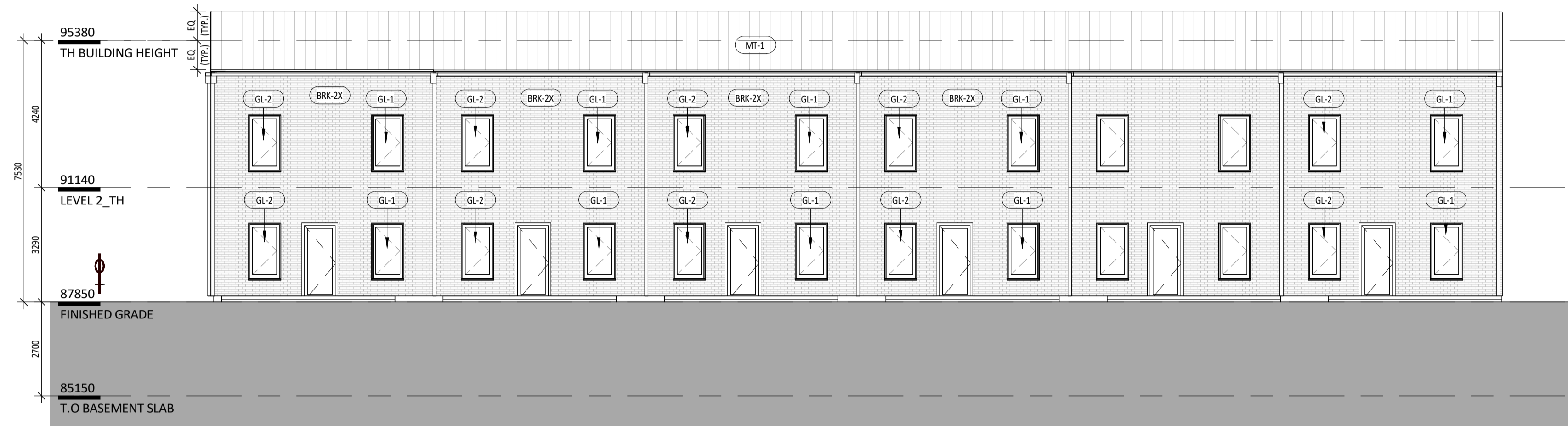
**BLOCK 7 - ELEVATIONS**

**JOHN SEVIGNY C.E.T.**  
**MANAGER (A), DEVELOPMENT REVIEW EAST**  
**PLANNING, DEVELOPMENT & BUILDING SERVICES**  
**DEPARTMENT, CITY OF OTTAWA**

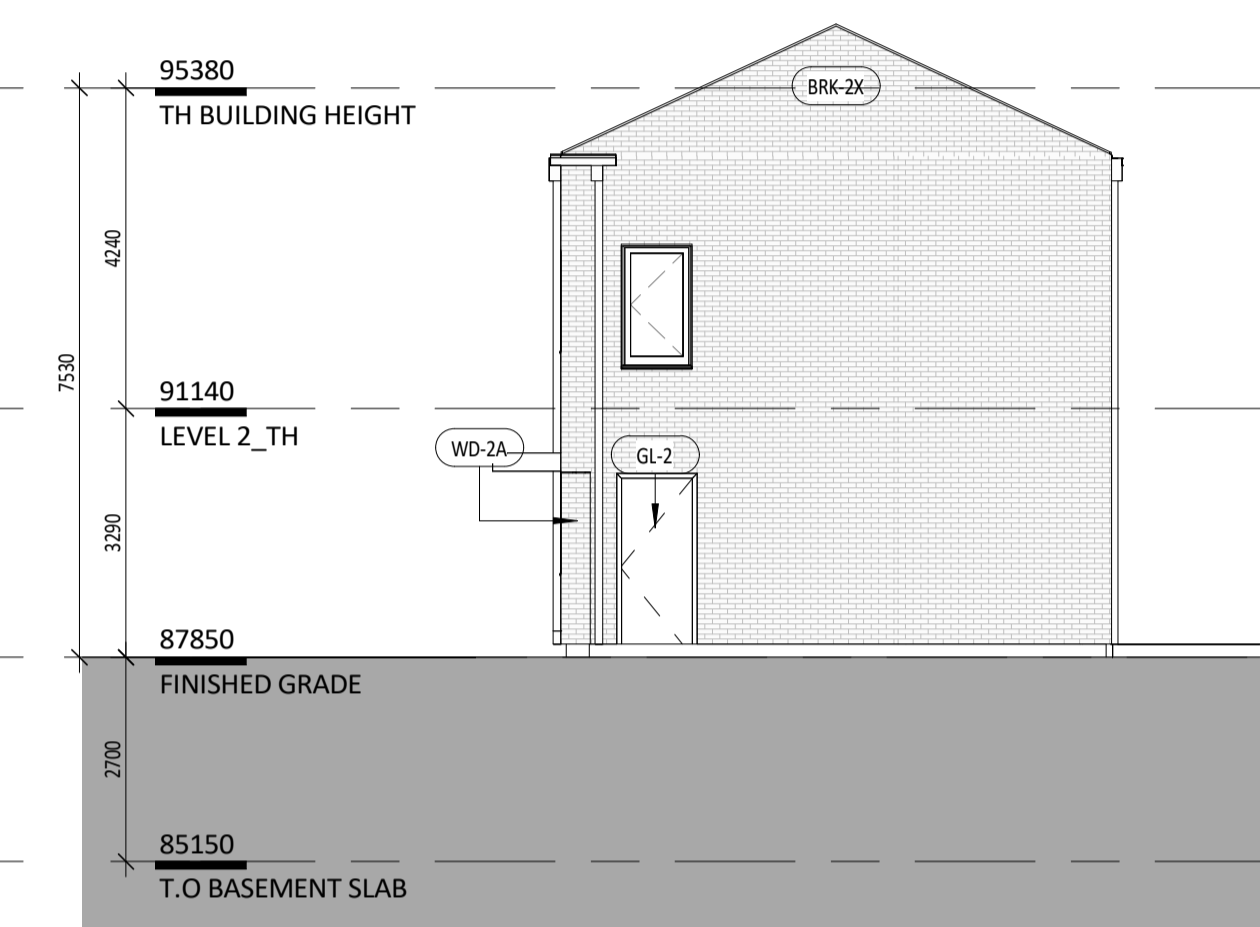
**APPROVED**  
 By sevignyjo at 9:27 am, May 27, 2025

Copyright is that of the Architect.  
 Any version of this drawing reproduced by any means from any media without prior written approval of the Architect is to be read for information only.  
 The Architect is not liable for any loss or distortion of information resulting from subsequent reproduction of the original drawing.

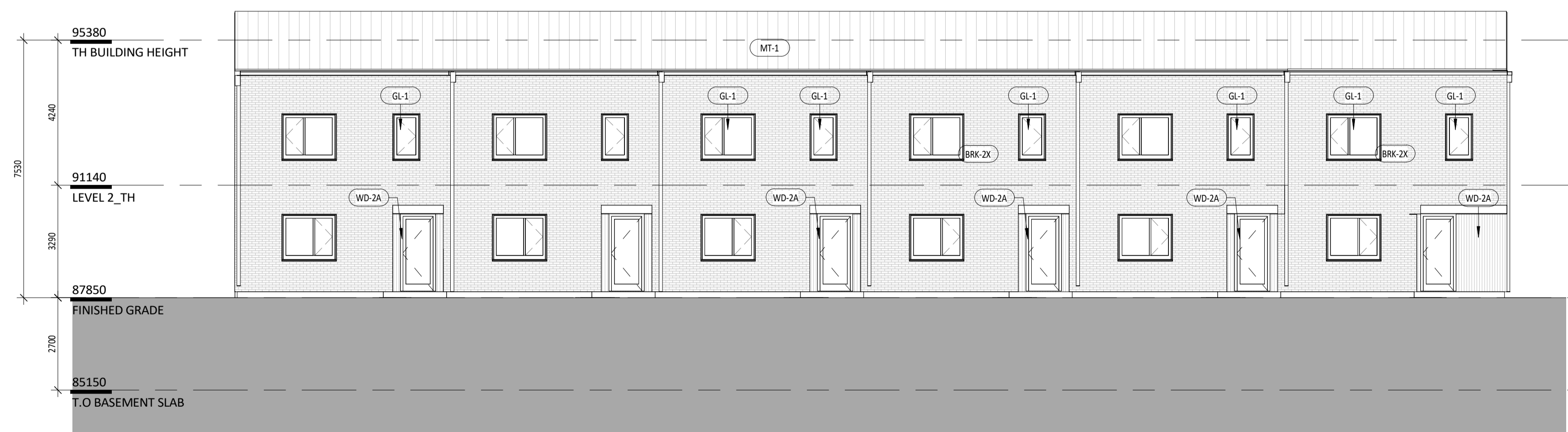
- GENERAL NOTES:**
- Drawings are not to be scaled. Contractor will verify all existing conditions and dimensions required to perform the Work and will report any discrepancies with the Contract Documents to the Architect before commencing work.
  - The Architectural Drawings are to be read in conjunction with all other Contract Documents including the Project Manuals and the Structural, Mechanical and Electrical Drawings. In cases of difference between the Consultant's documents with respect to the quantity, sizes or scope of work, the greater shall apply.
  - Positions of exposed or finished Mechanical or Electrical devices, fittings and fixtures are indicated on the Architectural Drawings. Locations shown on the Architectural Drawings shall govern over Mechanical and Electrical Drawings. Mechanical and Electrical items not clearly located will be located as directed by the Architect.
  - Dimensions indicated are taken between the faces of finished surfaces unless otherwise noted.
  - The architect has not been retained for supervision of construction and assumes no responsibility for means, methods and techniques of construction.
  - These documents are not to be used for construction unless specifically noted for such purpose.



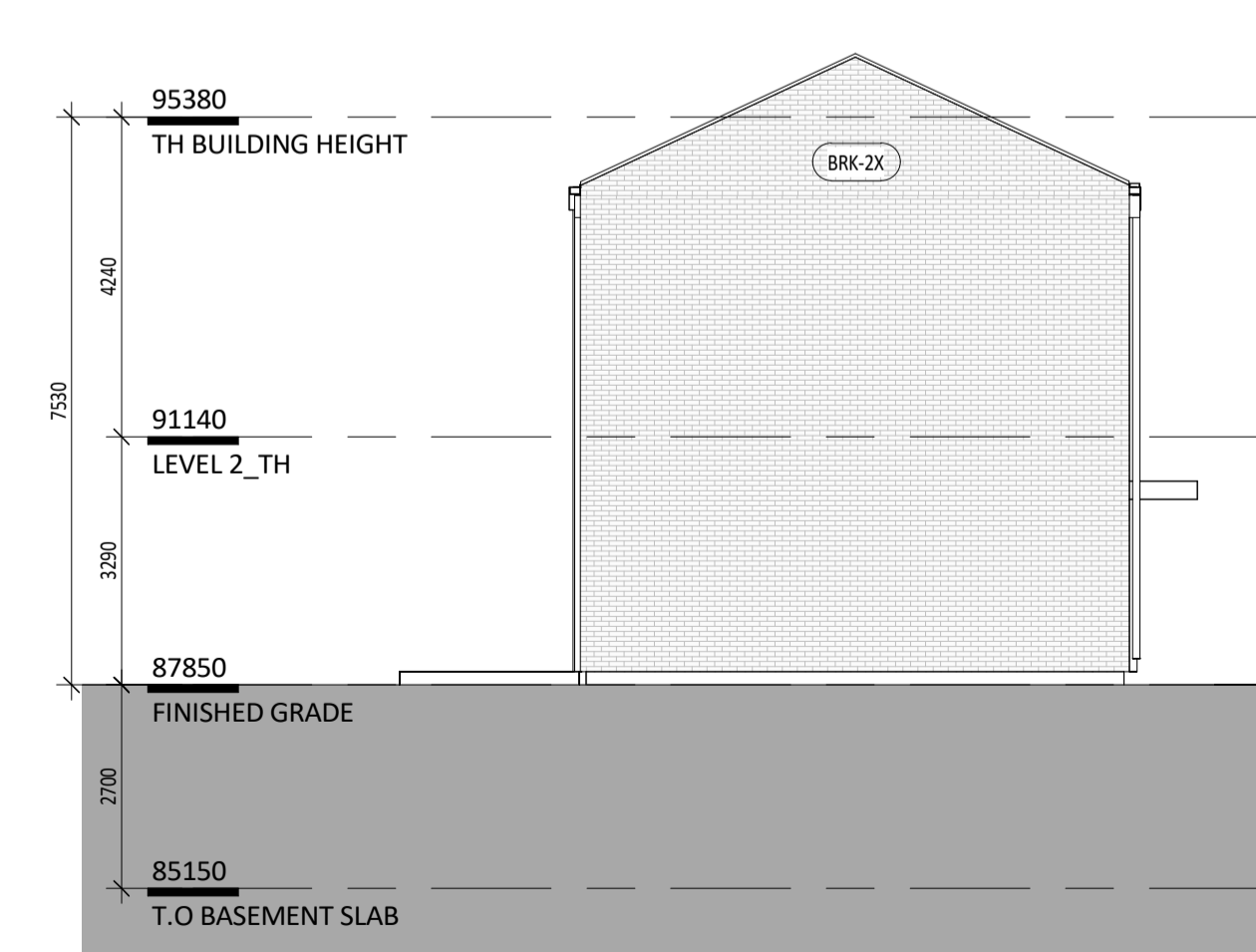
**1** BLOCK 8 - NORTH ELEVATION - SPA  
 1 : 100



**2** BLOCK 8 - EAST ELEVATION - SPA  
 1 : 100



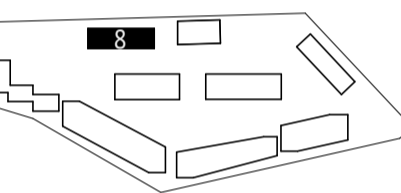
**3** BLOCK 8 - SOUTH ELEVATION - SPA  
 1 : 100



**4** BLOCK 8 - WEST ELEVATION - SPA  
 1 : 100

**LEGEND**

BRK-2X	MASONRY VENEER (SEE SPEC.)
WD-2A	EXTERIOR GRADE WOOD CLADDING (SEE SPEC.)
MT-1	STANDING SEAM METAL ROOF (SEE SPEC.)
GL-1	CLEAR GLAZING (SEE SPEC.)
GL-1a	TEMPERED CLEAR GLAZING (SEE SPEC.)
GL-2	FROSTED PRIVACY GLAZING (SEE SPEC.)
G-1	PAINTED METAL BALCONY PICKET GUARD RAIL
PT-4	PAINT (BLACK)
- - - - -	BRICK LEDGE ANCHORED TO STRUCTURE (SEE DETAILS)
- - - - -	SCHEDULED LOOSE INTEL (SEE STRUCT.)
- - - - -	TYP. VERTICAL MASONRY MOVEMENT JOINT



**KEY PLAN**

Rev.	Date	Issued
7	05/16/25	RE-ISSUED FOR SPA 6
6	05/28/25	RE-ISSUED FOR SPA 5
5	11/06/24	RE-ISSUED FOR 28A/SPA
4	06/02/23	RE-ISSUED FOR 28A/SPA
3	03/24/23	RE-ISSUED FOR 28A/SPA
2	09/21/22	RE-ISSUED FOR 28A/SPA
1	12/15/21	ISSUED FOR 28A/SPA

**KPMB Architects**  
 351 King St E, Suite 1200  
 Toronto, ON, Canada M5A 0L6  
 416.977.5104

**Kindred Works**  
**QUEENSWOOD COMMONS**

360 Kennedy Lane East, Ottawa Ontario

Project No. 2103  
 Scale 1 : 100  
 Plot Date 05/16/25

**BLOCK 8 - ELEVATIONS**