

- Legend
- TREE IDENTIFICATION NUMBER
 - EXISTING DECIDUOUS TREE
 - EXISTING CONIFEROUS TREE
 - EXISTING TREE TO BE REMOVED
 - PROPERTY LINE

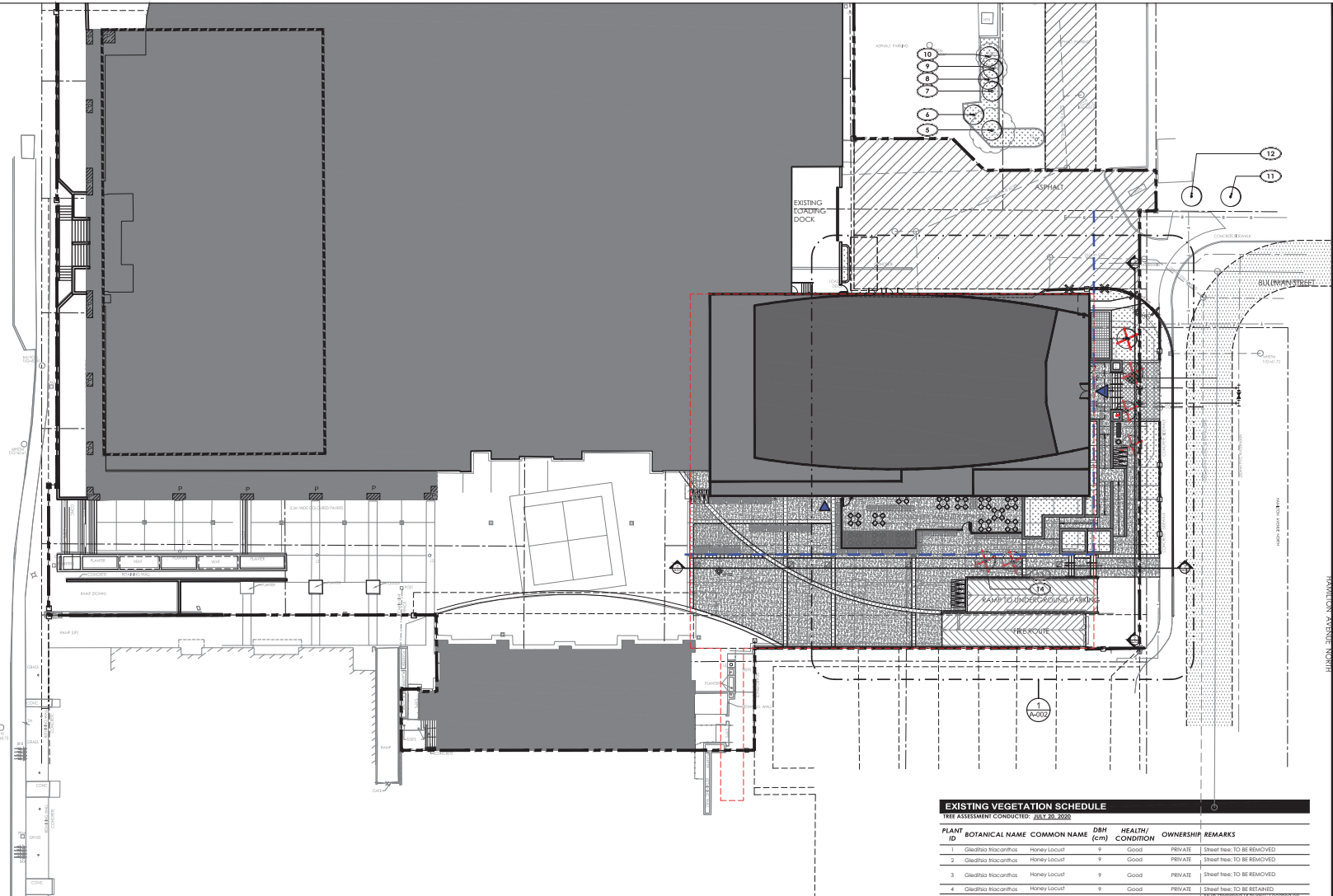
- Notes
- SITE PLAN PREPARED BY N4S ARCHITECTURE INC. DATED DECEMBER, 2021.
 - TOPOGRAPHIC SURVEY PREPARED BY STANTEC GEOMATICS LTD. DATED JUNE 15, 2020.
 - GEOTECHNICAL REPORT 20141578 PREPARED BY GOLDBERGER ASSOCIATED LTD. DATED MAY 2020.
 - PHASE ONE ENVIRONMENTAL SITE ASSESSMENT 122170372 PREPARED BY STANTEC CONSULTING LTD. DATED JULY 16, 2020.
 - CIVIL PREPARED BY STANTEC CONSULTING LTD. DATED DECEMBER 2021

5	REVIEW FOR CITY REVIEW	CA	KP	23.10.17
4	REVIEW FOR CITY REVIEW	CA	KP	20.06.17
3	REVIEW FOR CITY REVIEW	CA	KP	20.05.20
2	REVIEW FOR COORDINATION	CL	BL	01.10.16
1	REVIEW FOR COORDINATION	CL	BL	28.08.17
	Revision	By	App'd	TT/M/L/D/O
14	Name: 160410274	CL	BL	01.07.22
	Drawn	Checked	Design	TT/M/L/D/O

Permit-Seal

Client/Project
LASALLE INVESTMENT MANAGEMENT
22 ADELAIDE STREET WEST, 26TH FLOOR
HOLLAND CROSS
1560 SCOTT STREET
OTTAWA, ON

Title
PROPOSED DEVELOPMENT AND TREE PRESERVATION PLAN



EXISTING VEGETATION SCHEDULE
TREE ASSESSMENT CONDUCTED: JULY 20, 2020

PLANT ID	BOTANICAL NAME	COMMON NAME	DBH (cm)	HEALTH/CONDITION	OWNERSHIP	REMARKS
1	<i>Quercus floccosus</i>	Honey Locust	9	Good	PRIVATE	Sheaf tree. TO BE REMOVED
2	<i>Quercus floccosus</i>	Honey Locust	9	Good	PRIVATE	Sheaf tree. TO BE REMOVED
3	<i>Quercus floccosus</i>	Honey Locust	9	Good	PRIVATE	Sheaf tree. TO BE REMOVED
4	<i>Quercus floccosus</i>	Honey Locust	9	Good	PRIVATE	Sheaf tree. TO BE RETAINED
5	<i>Ulmus americana</i>	Sablon Elm	N/A	Good	MUNICIPAL	Multi-stemmed (2 trunks); Non-native; Involves species. Located on adjacent property. TO BE RETAINED
6	<i>Acer glabrum</i>	Affair Maple	6.9	Good	MUNICIPAL	Multi-stemmed (2 trunks); Non-native; Involves species. Located on adjacent property. TO BE RETAINED
7	<i>Acer glabrum</i>	Affair Maple	6.9	Good	MUNICIPAL	Multi-stemmed (2 trunks); Non-native; Involves species. Located on adjacent property. TO BE RETAINED
8	<i>Acer glabrum</i>	Affair Maple	6.9	Good	MUNICIPAL	Multi-stemmed (2 trunks); Non-native; Involves species. Located on adjacent property. TO BE RETAINED
9	<i>Acer glabrum</i>	Affair Maple	6.9	Good	MUNICIPAL	Multi-stemmed (2 trunks); Non-native; Involves species. Located on adjacent property. TO BE RETAINED
10	<i>Acer dasycarpum</i>	Soft-leaved Maple	23	Good	MUNICIPAL	Sheaf tree. Located on adjacent property. TO BE RETAINED
11	<i>Acer dasycarpum</i>	Soft-leaved Maple	25	Good	MUNICIPAL	Tree form. Specimen tree. TO REMAIN
12	<i>Acer dasycarpum</i>	Soft-leaved Maple	25	Good	MUNICIPAL	Tree form. Specimen tree. TO REMAIN
13	<i>Ambrosia artemisiifolia</i>	Common Ragweed	8	Good	PRIVATE	Tree form. TO BE REMOVED
14	<i>Ambrosia artemisiifolia</i>	Common Ragweed	8	Good	PRIVATE	Tree form. TO BE REMOVED

C:\Users\11878\Documents\11878\Projects\160410274\160410274.dwg (160410274.dwg) - 2022-07-22 10:00:00 AM