

DRAWING NOTES

- ① BLUE TINTED THERMAL UNITS
- ② SOLERA CURTAINWALL SYSTEM C/W SEMI OPAQUE THERMAL UNITS
- ③ ACM PANELS, SILVER METALLIC FINISH, TYPICAL
- ④ PREFINISHED RIBBED METAL SIDING, DARK GREY
- ⑤ SHOWROOM ENTRANCE AND VESTIBULE, PROCEMA WOOD GRAIN PANELS
- ⑥ CONTINUOUS LED STRIP LIGHTING AROUND PERIMETER
- ⑦ SHOP WINDOWS, CLEAR THERMAL UNITS C/W BUTT SILICONE JOINTS
- ⑧ ALL ALUMINUM ENTRANCES AND O/H DOORS TO BE CLEAR ANODIZED FINISH, TYPICAL
- ⑨ PAINTED STEEL DOORS TO BE DARK GREY TO MATCH SIDING
- ⑩ VOLVO WOODMARK AS PER VOLVO SIGN PROGRAM
- ⑪ DEALERSHIP NAME SIGN AS PER VOLVO SIGN PROGRAM
- ⑫ SERVICE SIGN AS PER SIGN PROGRAM

NOTES

It is the responsibility of the appropriate contractor to check and verify all dimensions on site and report all errors and or omissions to the Architect.
 All contractors must comply with all pertinent codes and by-laws.
 Do not scale drawings.
 This drawing may not be used for construction until signed by the Architect.
 Copyright reserved.

LOCATION MAP



LEGAL DESCRIPTION

PART OF LOTS 17 AND 18
 REGISTERED PLAN 23
 CITY OF OTTAWA

no.	date	revision
3	28 JUL. 2022	ISSUED FOR REVIEW
2	26 MAY 2022	ISSUED FOR REVIEW
1	12 OCT. 2021	ISSUED FOR REVIEW

no.	date	revision

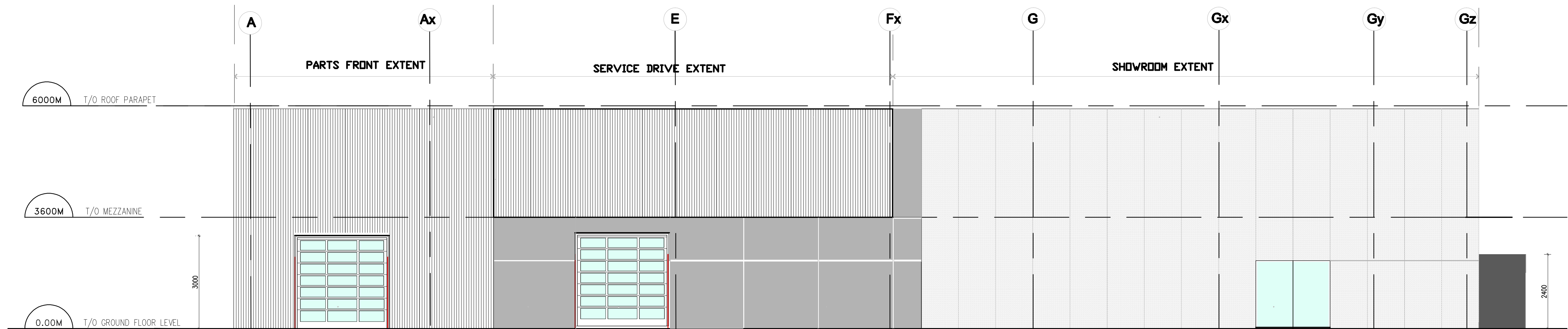
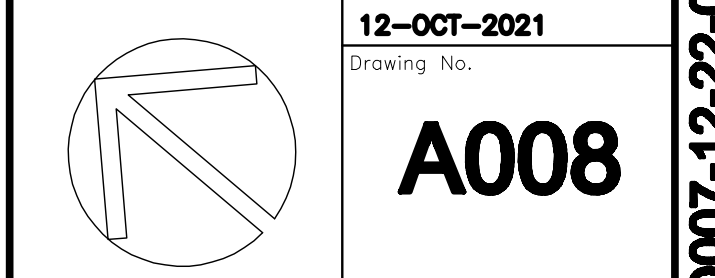
brian k. clark
A·R·C·H·I·T·E·C·T
 141 Catherine Street, Suite 102
 Ottawa, Ontario K2P 1C3
 TEL: (613) 238-7412 · FAX: 238-1799
 Email: bkclarkarchitect@on.albn.com

Project:
VOLVO ST. LAURENT
1300 MICHAEL STREET
OTTAWA, ONTARIO

OTTAWA, ONTARIO
 Drawing:

NORTH ELEVATION

Project No. 1811	Drawn By: DC	Scale: 1 : 100
North Arrow:	Date: 12-OCT-2021	Drawing No.:



NORTH ELEVATION (QUEENSWAY)

Lucy Ramirez
LUCY RAMIREZ
PLANNER
 PLANNING, INFRASTRUCTURE & ECONOMIC
 DEVELOPMENT DEPARTMENT, CITY OF OTTAWA

APPROVED
 By Lucy Ramirez at 12:54 pm, Feb 22, 2024

1 NORTH ELEVATION UNFOLDED
 A008 SCALE: 1:100

D007-12-22-0012
 18651